
APPENDIX A: CORRESPONDENCE AND PUBLIC INVOLVEMENT

APPENDIX A: CORRESPONDENCE AND PUBLIC INVOLVEMENT

1.0 INTRODUCTION

National Environmental Policy Act (NEPA) and the Council on Environmental Quality (CEQ) Regulations for Implementing the Procedural Provisions of NEPA, which are codified in Title 40 of the Code of Federal Regulations, Part 1500 (40 CFR 1500) require public involvement during all stages of an environmental impact statement (EIS) preparation. The scoping process, which is part of the public involvement, allows the federal agency undertaking the action to determine the scope of issues to be addressed in an EIS and identify the significant issues. Through a public scoping meeting a federal agency preparing an environmental documentation can inform the public of a proposed action and the alternatives and receive comments.

2.0 PUBLIC SCOPING NOTIFICATION

The Navy has actively sought to engage the public at all stages of the EIS for the implementation of the Base Realignment and Closure (BRAC), which involves the relocation of Walter Reed Army Medical Center activities to National Navy Medical Center (NNMC) in Bethesda, Maryland. To ensure that the full range of issues related to the proposed action is addressed, the Navy published in the Federal Register a Notice of Intent (NOI) to prepare an EIS and to announce public scoping meetings. The NOI was published on 21 November 2006. The Navy also published a public meeting notice in three local papers: The Bethesda Gazette on 22 November 2006, The Washington Post on 26 November 2006, and The Washington Times on 26 November 2006.

The notice provided general information on the Navy's proposed action, an announcement of four planned public scoping meetings concerning the action, a point of contact for providing comments, and the duration of the scoping period from 21 November 2006 to 4 January 2007. In addition, scoping notification letters were mailed to 293 local community associations and 21 local government entities. The scoping notification was also posted on the NNMC website.

Additionally, Montgomery County distributed the Notice of Public Scoping Meetings to approximately 2,000 members on its distribution list by email and information was also posted on Montgomery County's Website. It is assumed that Montgomery County will follow similar measures to inform those members of the availability of the Draft EIS.

3.0 PUBLIC SCOPING MEETINGS

To ensure that the public was provided adequate opportunities to attend the public scoping meeting, the Navy conducted four public scoping open houses on 12, 19, and 21 December 2006. Two different

sessions were conducted on 21 December 2006. All four open houses were held at the Pooks Hill-Bethesda Marriott in Bethesda, Maryland.

The first open house meeting was held on 12 December 2006, between 7:00 p.m. and 9:30 p.m. Project related information, including the NEPA process and the timeline, were presented at the open house in the format of poster board displays. A summary of the proposed action and contact information were also provided in brochures. Pre-addressed comment sheets were available for the attendees to fill in at the meeting or to mail back at their convenience. Navy representatives were on hand to answer questions as well as to receive comments from the attendees. All attendees were invited to sign the Open House Comment Sign-In roster and were given an Open House Sign-in and Address Card with the option to check if the interested party would like to be notified of the availability of the Draft EIS by mail or email.

A total of 39 people attended the first open house that included representatives of federal, state, and local agencies, community organizations, neighborhood associations, schools and the general public. All 39 of the attendees signed up to be notified of the availability of the Draft EIS, with thirty-four opting to receive the document via email and five through regular mail.

The second open house meeting was held on 19 December 2006, between 6:30 p.m. and 10:00 p.m. Project related information, including the NEPA process and the timeline, was presented at the open house in the format of poster board displays. A summary of the proposed project and contact information were also provided in brochures. Pre-addressed comment sheets were available for the attendees to fill in at the meeting or to mail back at their convenience. At 7:30 pm, the Navy conducted a formal presentation of the proposed action followed by an open Question/Answer forum. During the Question/Answer forum, six attendees made public comments. Navy representatives responded to the comments. A court reporter transcribed the presentation and oral public comment period that followed.

A total of 34 people attended the second open house and included representatives of federal, state, and local agencies, community organizations, neighborhood associations, and the general public. All 34 attendees signed up to receive the Draft EIS, with 28 opting to receive the document via email and six through regular mail.

A copy of the power point presentation given by the Navy during the second public scoping meeting and a transcript of the speech was made available in the following website:

http://www.bethesda.med.navy.mil/Professional/Public_Affairs/BRAC/index.aspx. The public was informed of the website during the public meetings. Montgomery County also informed the public of the website.

The third and fourth open house meetings were held on 21 December 2006, the first one between 1:00 p.m. and 4:00 p.m. and the second one

between 7:00 p.m. and 9 p.m. Both open house sessions were conducted in the same format as the previous open house on 12 December 2006.

A total of 20 people attended the first open house and 14 people attended the second open house on 21 December 2006. The participants included representatives of federal, state, and local agencies, community organizations, neighborhood associations, schools and the general public. All 20 attendees opted to be notified of the availability of the Draft EIS by email at the first open house. Likewise, at the second open house, 11 attendees asked to be notified of the availability of the Draft EIS by email and three opted for regular mail.

The Scoping Period for the EIS ended on 4 January 2007. However, in response to a request from elected state and local officials, the Navy issued a press release on 5 January 2007 to inform the public that it would extend the scoping comment period to 3 February 2007. The Navy also agreed to hold well-publicized public information meetings to provide interested individuals and neighborhood associations another overview of the Proposed Action and the EIS and to present a summary of the results of the scoping period. NNMC notified all its employees of the expanded comment period and the public information meetings.

Two additional public meetings were also held at the Pooks Hill - Bethesda Marriott in Bethesda, Maryland on 30 January and 1 February 2007.

At the Public Information Meetings, project related information, including the NEPA process and the timeline and the results of the scoping period, was presented as poster board display. During both meetings, the Navy also presented the information in a formal overview.

Similar to the open houses during the scoping period, a summary of the proposed action and contact information were also provided in brochures. Pre-addressed comment sheets were available for the attendees to fill in at the meeting or to mail-in at their convenience. Navy representatives were on hand to answer questions as well as receive comments from the attendees. All attendees were invited to sign the Open House Comment Sign-In roster and were given an Open House Sign-in and Address Card with the option to check if the interested party would like to be notified of the availability of the Draft EIS by mail or email.

A total of 54 persons attended the two public information meetings. Thirty-five people attended the public meeting on 30 January 2007 and 19 people attended the public meeting held on 2 February 2007. The participants included representatives of federal, state, and local agencies, community organizations, neighborhood associations, schools and the general public. At the first public meeting on 30 January 2007, 24 and 10 attendees requested to be notified of the availability of the Draft EIS via email and mail, respectively. One attendee opted

not to provide contact information. At the second public meeting on 2 February 2007, 14 and five attendees signed to be notified of the availability of the Draft EIS via email and regular mail, respectively.

4.0 COMMENTS RECEIVED DURING THE SCOPING PERIOD

The following presents an overview of the comments received during the scoping period. The written and verbal comments were received during the public open houses, via email, and postal service mail. Verbal comments received during the open houses were transcribed. The official correspondence from the local, state, and federal agencies is included in the comments.

Fifteen comment cards were submitted during the four public scoping meetings and a total of 10 attendees provided verbal comments during the open house on 19 December 2007. In addition, 69 and 12 comments were submitted via email and mail, respectively. Additionally, NNMC received a total of 45 phone calls, including voice messages and calls.

The Navy received a total of 56 comments between 4 January and 3 February 2007. Eleven comment cards were submitted during the two public information meetings. In addition, the Navy received 38 comments via emails, two by mail, and 15 phone calls, including voice messages and calls. Many attendees provided comments during an impromptu Question and Answer session during the Navy presentations.

4.1 SUMMARY OF THE COMMENTS AND RESPONSES

The following presents a summary of the comments received during the scoping period and expanded comment period as well as a summary of responses to the comments.

The majority of the comments from the state and local agencies and the local residents reflected concerns for the potential traffic increase in an area with high volumes of traffic. The comments can be grouped into the following four major categories:

- Transportation
- External Coordination
- Compatibility with Other Community Planning Efforts
- Other Environmental Issues

The comments on coordination/collaboration focused on the need for the Navy to communicate with community organizations, neighborhood associations and schools, other state and federal agencies, and local government.

Comments regarding compatibility with other planning efforts listed a number of planning initiatives underway such as the White Flint and Woodmont Master Plans, existing plans for Bethesda Central Business

District, and NIH. The comments also emphasized the need to incorporate modern urban concepts in the implementation of the Proposed Action, such as pedestrian and transit oriented development. The comments also highlighted the need to keep residents informed and involved in decisions on any improvements being considered that would affect their neighborhoods.

Comments on other environmental issues included: noise from construction and helicopter operations, air pollution from traffic, Rock Creek and stormwater management, open space, cultural resources and National Historical Preservation Act (NHPA) Section 106, and utilities capacity.

The correspondence from local, state, and federal agencies and elected officials and a list of the people making comments are included in this appendix.

Table A-1 presents a summary of the comments received during the scoping and expanded comment periods and the responses. As discussed previously, the comments are categorized into four main categories and are further divided into subcategories as applicable.

5.0 ONGOING PUBLIC OUTREACH

As a part of the Master Planning process, the Navy has met with a Transportation Advisory Committee (TAC), composed of affected state and local agencies and organizations. These agencies and organizations include the Maryland Department of Transportation (MDOT), Maryland State Highway Administration (MSHA), Montgomery County Government, Montgomery County Department of Public Works, Washington Metropolitan Area Transit Authority (WMATA), and Maryland National Capital Park and Planning Commission (M-NNCPPC). The TAC has collaborated on traffic analysis methods.

Similarly, the Navy has been participating in the BRAC Implementation Committee, appointed by the Montgomery County Executive. The Committee comprises agency and community representatives, state and local elected officials, and military representatives.

In addition, to inform the interested parties of the availability of the DEIS and public hearings, a Notice of Availability (NOA)/Notice of Public Hearing (NOPH) will be published in the Federal Register and public notices will be published in the newspapers. The Navy will also transmit notification letters, via email or mail, and inform the local community associations and interested individuals of the availability of the DEIS and the public hearings.

6.0 ATTACHMENTS

The following attachments provide supporting documentation for the Scoping Period and Expanded Comment Period:

Attachment 1: Formal correspondence - local, state, and federal agencies, and elected officials.

Attachment 2: List of commenters that provided comments during the scoping period and expanded comment period.

Attachment 3: List of Scoping Meeting and Public Information Meeting attendees.

Attachment 4: Federal Register Notice of Intent, public notice, and U.S. Congress notice.

Attachment 5: List of community associations and government entities that were mailed the notification of the public scoping meetings.

Table A-1: Summary of Comments Received During the Scoping Period and Expanded Comment Period

| COMMENT CATEGORIES | RESPONSES |
|--|---|
| TRANSPORTATION ISSUES | |
| Roadway/Traffic | |
| Potential road improvements for main thoroughfares (Rockville Pike, Jones Bridge Road, or I-495) | DEIS indicates high traffic volumes on several intersections. Potential improvements identified in the DEIS include additional turn lanes (left and right) and potentially traffic signals at intersections along Rockville Pike and Jones Bridge Road. (Ref: DEIS Sec. 4.7). |
| Rockville Pike (Wisconsin Avenue) corridor is severely congested | DEIS indicates high traffic volumes per comment. Potential improvements identified in the DEIS include additional turn lanes (left and right) and potentially traffic signals at intersections along Rockville Pike and Jones Bridge Road. (Ref: DEIS Sec. 4.7). |
| Cedar Lane rush hour backups prevent neighborhood access | DEIS results show high traffic volumes at West Cedar Lane and Rockville Pike. Potential improvements such as new east-west turning lanes and additional turn lanes on Rockville Pike have been identified in the DEIS. (Ref: DEIS Sec. 4.7). |
| Neighborhood streets illegally used as cut-through (Glenbrook Parkway, Chelsea, Maryland) to avoid Rockville Pike/Jones Bridge Road intersection | Cut-through movements are a result of high traffic volumes on arterials and identified improvements would help alleviate the reasons for avoiding Rockville Pike/Jones Bridge Road intersection. (Ref: DEIS Sec. 4.7). |
| Neighborhood streets used by traffic are narrow/substandard | Solutions to these problems are not within the authority of the Navy. (Ref: DEIS Sec. 4.7). |
| Traffic congestion can affect emergency vehicles | DEIS analysis confirms high traffic volumes on arterials. (Ref: DEIS Sec. 4.7). |
| Rush hour congestion on Rockville Pike keeps east-west traffic from crossing on green signal | DEIS indicates high volumes at key intersections. DEIS potential improvements include additional left or right turn lanes (Ref: DEIS Sec. 4.7). |
| Cedar Lane intersection with Rockville Pike is already one of the worst traffic-congested intersections in Montgomery County | DEIS indicates high volumes per comment. DEIS identified potential improvements that include additional left turn lanes on Cedar Lane (Ref: DEIS Sec. 4.7). |
| NIH will open a new vehicle inspection facility on Rockville Pike across from NNMCC, which will increase traffic. | This station would not change results of the traffic analysis presented in DEIS Appendix C. |

| COMMENT CATEGORIES | RESPONSES |
|--|---|
| NIH will be putting a parking garage in the buffer zone by the Metro Station, entering from Rockville Pike, which will increase traffic | This garage would not change results of the traffic analysis presented in DEIS Appendix C. |
| Funding source for roadway improvements (changes in transportation infrastructure) | The EIS has provided potential traffic improvement measures for the 2011 implementation of the alternatives. However, off Base projects are under the jurisdiction of either Montgomery County or the State of Maryland. The Navy has coordinated the traffic analysis and recommendations with these agencies. |
| Do not use Glenbrook Parkway or other neighborhood streets to access NNMC (it will split the neighborhood in two and severely damage neighborhood streets) | DEIS does not identify neighborhood roads as ways to access NNMC. Improvements are identified for arterials (Ref: DEIS Sec. 4.7) |
| Reopen 2 of the 3 gates closed after 9/11 entrances on Jones Bridge Road. Expansion of existing entrances along Rockville Pike and Jones Bridge Road | DEIS identified improvements or studies for all gates. (Ref: DEIS Sec. 4.7). |
| Widen Jones Bridge Road between Rockville Pike and Connecticut Avenue and Connecticut Avenue between Jones Bridge Road and I-495 | DEIS is not considering widening Jones Bridge Road or Connecticut Avenue. |
| Do not widen Jones Bridge Road unless it is by using land owned by the Navy | DEIS is not considering widening Jones Bridge Road or Connecticut Avenue. DEIS potential improvements include additional left or right turn lanes at selected intersections. (Ref: DEIS Sec. 4.7). |
| Add turning lanes to Rockville Pike | DEIS potential improvements include additional left or right turn lanes at Rockville Pike intersections (Ref: DEIS Sec. 4.7). |
| More lanes/improve entrances to NNMC | DEIS identified improvements or studies for all gates. (Ref: DEIS Sec. 4.7). |
| Dedicated I-495 ramp to NNMC with adequate queuing space on NNMC; reorient NNMC to front along northeast | DEIS potential improvements investigated the impact of slip ramps off/on EB I-495. Capacity analysis results for total future conditions show that slip ramps do not improve traffic conditions caused by the BRAC alternatives in a significant way; the intersections above capacity would continue to operate near or above the County capacity standards. (Ref: DEIS Sec. 4.7). |
| Access from I-495 would only create worse problems on I-495. | See the answer above. |

| COMMENT CATEGORIES | RESPONSES |
|---|--|
| Traffic signal phasing / use Synchronization model | This model would be appropriately used in the design phase of any projects that are approved. (Ref: DEIS Sec. 4.7). |
| Traffic Studies: add intersections, insure up to date maps, take cut-through/inspection station/new vehicle center into consideration | The number of intersections studied included 27 intersections. These locations were selected for traffic analysis based upon their proximity to the proposed development parcels, roadway traffic volumes, potential effect of the development scenarios on each location, and requirements from the M-NCPPC. In addition, the Transportation Study considered potential future roadway improvements based on information received from different government agencies. (Ref: DEIS Sec. 4.7). |
| Grade separate Cedar Lane/Rockville Pike | DEIS has not considered grade-separation. Potential improvements identified in the DEIS include additional left or right turn lanes at selected intersections. (Ref: DEIS Sec. 4.7). |
| Other roadway and intersection recommendations, such as Dupont Circle-style underpasses at Rockville Pike intersections | DEIS has not considered underpasses. Potential improvements identified in the DEIS include additional left or right turn lanes at selected intersections. (Ref: DEIS Sec. 4.7). |
| Pedestrian/Bicycle | |
| Crossing Jones Bridge Road or Rockville Pike to Metro is dangerous | DEIS identifies a measure to link NNMC (and east side of Rockville Pike) with the Metro Station. (Ref: DEIS Sec. 4.7). |
| Many residents expressed safety concerns due to the lack of sidewalks in their neighborhoods, especially with cut-through traffic | The Navy evaluated the pedestrian infrastructure in the vicinity of NNMC as part of the Transportation Study (See Section 3.7). However, the Navy is not the action proponent for any improvements that would occur off base, including any pedestrian infrastructure improvements. |
| To the north of NNMC, sidewalk is too close to Rockville Pike -a safety issue, badly cracked and broken in places, obstructed by telephone poles. To the south of NNMC, sidewalk is a rough, narrow asphalt path. These sidewalks are impassable in places for the handicapped and are a danger to pedestrians and cyclists | See the answer above. |
| Build a pedestrian bridge or tunnel across Rockville Pike/Jones Bridge Road for pedestrians crossing to use Metro | DEIS identifies a measure to link NNMC (and east side of Rockville Pike) with the Metro Station. (Ref: DEIS Sec. 4.7). |

| COMMENT CATEGORIES | RESPONSES |
|--|---|
| Traffic studies include effects on pedestrians | DEIS Appendix C, Transportation Study discusses current pedestrian features and potential improvements. |
| Provide for bicycle trail around NNMC and linking to other trails | NNMC survey identified current bicycle facilities. Even though the network is observed to provide good coverage, recommendations are made to provide missing links to improve bicycle access (Ref: Appendix C, Transportation Study,). |
| New urbanist concepts for facility designs; develop southwest corner | The siting of the BRAC facilities has largely been dictated by the need for compatibility and integration with the existing medical care as well as consideration for the Historic District at NNMC. Current NNMC campus is pedestrian-oriented and maintains a shuttle service throughout the campus. It is also in close proximity to sources of public transportation. |
| Expected more specific information on proposed roadway improvements | Section 4.7 of the DEIS provides information on potential roadway improvements (Appendix C, Transportation Study). |
| Parking | |
| Adjoining/surrounding communities Patients and staff; Parking availability (long term and short term); has additional parking for USUHS been considered? | USUHS parking, which is not a BRAC project, is not addressed in the DEIS. DEIS addresses BRAC parking needs as part of the projects considered in the EIS. (Ref: DEIS Sec. 4.7.2.5). |
| Residents are concerned about parking in their neighborhood by military personnel workers, as well as construction workers during the construction phase. Residents south of NNMC - neighborhood has become a "wait" area to pick up employees from work; NNMC expansion will make worse. | Parking on NNMC will be limited for construction workers; however, the contractor storage area on the west side of the campus will be available to and managed by the contractors to avoid off Base disruptions. (Ref DEIS Section 4.7.2.4). |
| Parking/Traffic Demand Management Underground parking to conserve green space. | BRAC parking relies on multi-story garages that minimize the footprint. |
| Parking for patients; constrain staff parking to encourage non-single occupant vehicle solutions; examples of NRC, NIH, EPA, NCPC | As DEIS notes, approximately 1,800 spaces net are provided for the new employees and patients/visitors. |

| COMMENT CATEGORIES | RESPONSES |
|---|--|
| Satellite parking with shuttle buses | All transportation measures are being considered and will be addressed by the Transportation Management Plan. (Ref: Appendix C, Transportation Study, Sec. 4.6). |
| Public Transportation | |
| Complete Purple Line - WRAMC employees coming from that direction | DEIS includes transportation projects expected to be completed by relevant agencies within the study area. The funded projects do not include plans for the Purple Line. |
| Improved signage to Metro at NNMC | NNMC Master Plan surveyed pedestrian and bicycle facilities. Potential measure to link NNMC (and east side of Rockville Pike) with the Metro Station are being considered. (Ref: Appendix C, Transportation Study). |
| Direct tunnel access to Metro station from NNMC | Potential measures to link NNMC (and east side of Rockville Pike) with the Metro Station are identified (Ref: Appendix C, Transportation Study). |
| Affordable housing near public transit | The Proposed Action under this EIS includes bachelors enlisted quarters but does not propose housing off Base; employees transferring from WRAMC who live off Base are assumed to remain in their current residences. |
| Shuttle buses along Rockville Pike | Current shuttle buses are provided between NNMC and the Metro and other military installations. |
| EXTERNAL COORDINATION COMPATIBILITY WITH OTHER PLANS | |
| Coordination / Collaboration Requested Community organizations, neighborhood associations and schools, NIH, agencies and local government | The Navy has participated in the BRAC Implementation Committee, appointed by the Montgomery County Executive. The Navy has met with a Transportation Advisory Committee (TAC), composed of affected state and local agencies and organizations. The TAC has collaborated on traffic analysis methods. The community organizations, neighborhood associations, and other stakeholders will be notified of the availability of the DEIS and public meetings. |
| Planning Initiatives - master plans underway at White Flint and Woodmont areas; existing for Bethesda Central Business District, NIH; modern urban concepts | The DEIS discusses other planning initiatives in the vicinity of NNMC; however, proposed actions only add facilities on Base. Use of NNMC for medical care is consistent. Improvements address increase in traffic. (DEIS Sections 3.9 and 4.9). |
| Keep residents informed / involved in decisions on any improvements being considered, such as for roadways, affecting their neighborhoods | The DEIS identifies roadway improvements; none off Base are under the purview of the Navy to implement. |

| COMMENT CATEGORIES | RESPONSES |
|---|---|
| Establish a specific liaison with Montgomery County DPWT to ensure that any changes made on NNMC are complemented by changes to the surrounding transportation network. | Montgomery County DPWT is part of the Transportation Advisory Committee, which has collaborated on traffic analysis methods for the Transportation Study. |
| OTHER ENVIRONMENTAL ISSUES | |
| Noise - EIS needs to study any additional helicopter flights and associated noise | Both current and future helicopter operations at NNMC are for emergencies only. Future emergency flights are expected to increase by only 1-2 flights per month from the current operations of approximately 12.6 flights per month. Resultant noise would be temporary and does not represent a significant change from existing conditions. (Ref: DEIS Sec. 4.5). |
| Noise - vehicles, construction, NNMC trash pick up and lawnmowers | Traffic volumes must double to produce a three dBA increase - the level discernible to human ear. The traffic levels projected for the proposed action are not anticipated to double and would not significantly increase noise. Construction and demolition contractors would adhere to Montgomery County and Maryland requirements and noise impacts during the construction phase would be reduced by using noise reduction measures if necessary. (Ref: DEIS Sec. 4.5). |
| Air Pollution - traffic volume will further compromise air quality, health-related issues | Air quality analysis for the DEIS determined that pollutant emissions from the proposed action do not exceed the <i>de minimis</i> levels or standards established by USEPA and therefore would not cause significant air quality impacts. (Ref: DEIS Sec. 4.4). |
| Storm Water Management - work with new facility at Woodmont/Wisconsin; concerns regarding increase in runoff to Rock Creek | Only a small overall increase in impervious surfaces occurs and runoff from this would be managed by stormwater management plan and BMPs approved by the State. (Ref: DEIS Sec. 4.2). |
| Stormwater generated on NNMC will increase runoff flows through Stone Ridge, possibly exceeding the capacity of their current stormwater conveyance systems. | See previous response. |
| Preserve open space | The Proposed Action only develops over existing development such as parking lots or on landscaped areas; open space impacts are minimized. (Ref: DEIS Sec. 4.3). |
| Historic Preservation - follow NHPA Section 106 procedures. | The Navy will conduct formal consultation under Section 106 of NHPA with appropriate agencies. |

| COMMENT CATEGORIES | RESPONSES |
|--|--|
| Utilities - evaluate peak demand | Movement of functions from WRAMC does not increase regional demand. Providers indicate new demand at NNMC can be met. (Ref: DEIS Sec. 4.6). |
| Impacts to the delivery of public services to nearby communities | Because no employees currently living off Base are expected to change their current residences, they will have minimal impact on local community services. (Ref: DEIS Sec. 4.10). |
| SCOPE OF ENVIRONMENTAL IMPACT STATEMENT | |
| Change BRAC Law to not move Walter Reed Army Medical Center medical services to National Naval Medical Center Bethesda | Comment noted. |
| Ensure cumulative effects of other plans and actions in Bethesda are considered | Cumulative Impacts are discussed in DEIS Section 4.12. The DEIS discusses other planning initiatives in the vicinity of NNMC; however, proposed actions only add facilities on Base. Use of NNMC for medical care is consistent. Improvements address increase in traffic. (DEIS Sections 3.9, 4.9, and 4.12). |
| Master Plan should be ahead of the EIS | Master Plan will follow DEIS, but DEIS has been coordinated with ongoing planning for the master plan. (Ref: DEIS Sec. 1). |
| Follow new urbanist principles in siting and design | The siting of the BRAC facilities has largely been dictated by the need for compatibility and integration with the existing functions as well as consideration for the Historic District at NNMC. Current NNMC campus is pedestrian-oriented and maintains a shuttle service throughout the campus. It is also in close proximity to sources of public transportation. |

(This page is intentionally not used.)

**Attachment 1: Formal Correspondence - Local, State
and Federal Agencies and Elected Officials**

Formal Correspondence from Local, State and Federal
Agencies and Elected Officials



Maryland Department of Planning

Robert L. Ehrlich, Jr.
Governor
Michael S. Steele
Lt. Governor

Audrey E. Scott
Secretary
Florence E. Burian
Deputy Secretary

December 12, 2006

Mr. J. A. Zulick
Commander, CEC, U.S. Navy Head
U.S. Department of the Navy
Facilities Management Department
National Naval Medical Center
Bethesda, MD 20889-5600

STATE CLEARINGHOUSE REVIEW PROCESS

State Application Identifier: MD20061212-1240

Reviewer Comments Due By: December 30, 2006

Project Description: Notification of Intent to Prepare an Environmental Impact Statement at the National Naval Medical Center

Project Location: Montgomery County

Clearinghouse Contact: Bob Rosenbush

Dear Mr. Zulick:

Thank you for submitting your project for intergovernmental review. Participation in the Maryland Intergovernmental Review and Coordination (MIRC) process helps ensure project consistency with plans, programs, and objectives of State agencies and local governments. MIRC enhances opportunities for approval and/or funding and minimizes delays by resolving issues before project implementation.

The following agencies and/or jurisdictions have been forwarded a copy of your project for their review: the Maryland Departments of Transportation, the Environment, Natural Resources; the County of Montgomery; the Maryland-National Capital Park and Planning Commission in Montgomery County; and the Maryland Department of Planning, including the Maryland Historical Trust. They have been requested to contact your agency directly by December 30, 2006 with any comments or concerns and to provide a copy of those comments to the State Clearinghouse for Intergovernmental Assistance. Please be assured that after December 30, 2006 all MIRC requirements will have been met in accordance with Code of Maryland Regulations (COMAR 14.24.04). The project has been assigned a unique State Application Identifier that should be used on all documents and correspondence.

If you need assistance or have questions, contact the State Clearinghouse staff noted above at 410-767-4490 or through e-mail at brosenbush@mdp.state.md.us. Thank you for your cooperation with the MIRC process.

Sincerely,

Linda C. Janey mat

Linda C. Janey, J.D., Director
Maryland State Clearinghouse for Intergovernmental Assistance

LCJ:BR

Enclosure(s)

cc: Mike Paone - MDPLS*

Jorge Valladares - MNCPPCM*

Cindy Johnson - MDOT*

Joane Mueller - MDE*

Tammy Williams - DBED*

Beth Cole - MHT*

Ray Dintaman - DNR*

Lisa Rother - MTGM*

Ron Waters - DHCD*

Mike Nortrup - MDPL*

Joe Tassone - MDPE*



CHRIS VAN HOLLEN
MEMBER OF CONGRESS
8TH DISTRICT, MARYLAND

December 28, 2006

LCDR John Eckenrode
BRAC Coordinator -- NNMC
8901 Wisconsin Avenue
Bethesda, MD 20889

Dear LCDR Eckenrode:

We are writing regarding the proposed expansion of the National Naval Medical Center (NNMC) required by the Defense Base Closure and Realignment Act of 1990, as amended.

Under the National Environmental Policy Act, the public must have sufficient opportunity to share its concerns over the proposed relocation of the Walter Reed Army Medical Center (WRAMC) services onto the NNMC campus. However, the open houses for public comment were recently held over a two week period during the busy holiday season, which made it difficult for many local residents and community association representatives to attend.

The scoping period is currently scheduled to conclude on January 4, 2007. As elected representatives for the neighborhoods surrounding NNMC, we respectfully request that the scoping period be extended for 30 days, until February 3, 2007. We ask that you use this additional time to host well-publicized public forums to give interested individuals and neighborhood associations greater opportunities to learn about the full scope of this BRAC project and to express their views during this crucial scoping period.

The challenges in combining the operations of the WRAMC and the NNMC will be significant, but with the requisite cooperation of the various governmental agencies involved, we believe that this project can provide numerous benefits to our community. Most importantly, it will create a world-class campus for delivery of the finest medical services available for treating our troops. In doing so, it will also increase the opportunities for collaboration between NNMC and the other neighboring medical institutions -- the National Institutes of Health and Suburban Hospital.

Despite the benefits that we hope will inure to our community, we share many of the concerns that our constituents have expressed regarding the potential impacts of the merger of these two institutions. For instance, people who live and work in the Bethesda area already face heavily clogged roads surrounding the NNMC campus, and there are estimates that car trips could increase by as much as 40 percent as a result of the proposed expansion. Traffic increases of this magnitude, and concerns about pedestrian-traffic safety, noise, and air quality, create

Not Printed At Government Expense.

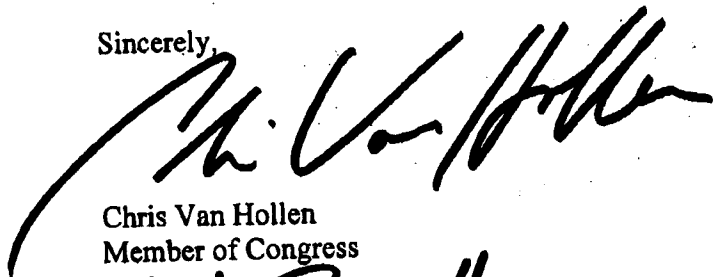


legitimate apprehension among our community members that their quality of life could be irreparably damaged as a result of the proposed expansion.

Accordingly, we request that the Environmental Impact Statement address these and the full range of potential community and environmental concerns and identify the precise manner in which these concerns will be mitigated by the federal government. For example, additional traffic of this magnitude may require significant transportation infrastructure enhancements, potentially including a new exit ramp off the Capital Beltway, expanded public transit, and enhancements for both bicycle and pedestrian safety and accessibility. It would be unfair for the federal government -- in pursuit of the economic efficiencies that drive the BRAC process -- to shift to local and state governments a significant financial burden that flows directly from this proposed consolidation.

Thank you in advance for your prompt attention to this matter of serious concern to us and to our constituents.

Sincerely,



Chris Van Hollen
Member of Congress



William A. Bronrott
Member, Maryland House of Delegates,
District 16



Roger Berliner
Member, Montgomery County Council,
District 1

65



OFFICE OF THE COUNTY EXECUTIVE
ROCKVILLE, MARYLAND 20850

Isiah Leggett
County Executive

January 3, 2007

Commander John Eckenrode
Base Realignment and Closure Coordinator
National Naval Medical Center
8901 Wisconsin Avenue
Bethesda, Maryland 20889

Dear Commander Eckenrode:

Thank you for the opportunity to comment on the preparation of the Environmental Impact Statement (EIS) and Master Plan for the National Naval Medical Center (NNMC). Representatives of County government attended each of the scoping meetings held during the month of December, and were impressed by the amount of military and consultant staff available to answer questions and discuss the EIS. Even given this level of effort, though, I am concerned that the timing of the scoping period during the holiday season did not provide the broadest opportunities for public input. I request that the EIS preparers continue to accept and consider public input during the entire EIS process. Our citizens are interested and well informed and should be considered as a resource during the preparation of the EIS and Master Plan.

In addition, it will be important to have continued and frequent communication with staff from various government agencies so that staff can work along with your staff to be sure that citizens are fully informed of progress during the process. This includes those in Congress, state and county transportation agencies, WMATA, and our economic development and workforce partners.

County staff has been closely following the recommendations of the Base Realignment and Closure (BRAC) committee, including the realignment of Walter Reed Army Medical Center in D.C. and the transfer of Walter Reed's functions to other locations. The County is proud to be home to NNMC which, combined with the National Institutes of Health and Suburban Hospital, creates an unparalleled healthcare location. The modernization and expansion of all of these facilities, however, creates major challenges to maintaining the quality of life in the surrounding neighborhoods and the broader community.

The 1990 NNMC Master Plan update states that "the level of traffic around the facility has increased significantly and resulted in congestion at many intersections, creating a level of service of F on Wisconsin Avenue at its intersections with both Jones Bridge Road and Cedar Lane." In the 16 years since this statement was written, traffic congestion has continued and the intersections mentioned in the 1990 Plan are two of the most congested intersections in the County.

Lt. Commander John Eckenrode
January 3, 2007
Page 2

Planning for the proposed increase of staff, patients, and visitors needs to carefully evaluate the impacts of the new trips on the road network. We recommend that in your evaluation, the number of intersections studied be expanded to include the Beltway exit to the north at MD355 as well as intersections at Connecticut Avenue and Jones Bridge Road and at Old Georgetown Road and Cedar Lane. Because of the constraints of the existing roadway system, roadway transportation improvements will necessarily be of a limited to moderate impact. The one major roadway improvement that should be studied is a possible direct connection with the Capital Beltway at the northeastern campus boundary.

It is extremely important that any recommended roadway improvements be coupled with a strong effort to increase use of public transit and other alternatives to the single occupancy vehicle arrival at NNMC. This should include pedestrian improvements within the campus and along its perimeter, possibly including a grade separated pedestrian crossing for Wisconsin Avenue or a direct tunnel access under Wisconsin Avenue to the Medical Center Metro stop. Use of expanded public transportation options such as satellite parking locations, shuttle buses within the campus, and additional Ride-On or Metrobus service should be investigated, as well as providing transit subsidy funds and education and promotion of public transportation use at NNMC. We will be coordinating with our federal and state elected officials to be sure that financial resources will be made available to complete recommended off-site improvements.

Coordination of off-site transportation options with the NIH should be considered, along with items such as preferential parking for carpools, telecommuting options, and providing bike racks and showers for bike commuters. Many of the trips to the facility will be from patients and visitors who regularly travel to the base. Scheduling appointments at off-peak hours and providing information on public transportation to visitors should be pursued, as well as any other potential mechanisms to decrease the congestion on the surrounding roadway network.

Any planning for the facility should seek to maintain and enhance the buffer zone around the facility. This includes creation of a plan for parking for construction workers during the building phase of the proposed expansion. Lighting and noise impacts on the community must be minimized. Location of the helipad and use of helicopters to and from the facility must be planned with a minimum of impact on the surrounding community.

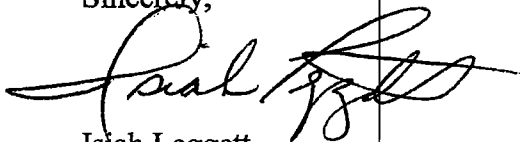
Lt. Commander John Eckenrode

January 3, 2007

Page 3

We look forward to continuing a dialogue with the military as your plans continue to evolve for the realignment of Walter Reed and NNMC. The County's main point of contact for BRAC issues is Lisa Rother, Planning Manager in the Office of the County Executive. She can be reached by phone at 240-777-2593 or by email at lisa.rother@montgomerycountymd.gov.

Sincerely,

A handwritten signature in black ink, appearing to read "Isiah Leggett", written in a cursive style.

Isiah Leggett
County Executive

IL:jgs

82

MDP
Maryland Department of Planning

Robert L. Ehrlich, Jr.
Governor
Michael S. Steele
Lt. Governor

Audrey E. Scott
Secretary
Florence E. Burian
Deputy Secretary

January 4, 2007

Mr. J. A. Zulick
Commander, CEC, U.S. Navy Head
U.S. Department of the Navy
Facilities Management Department
National Naval Medical Center
Bethesda, MD 20889-5600

STATE CLEARINGHOUSE REVIEW – ADDITIONAL REVIEWER COMMENTS RECEIVED

State Application Identifier: MD20061212-1240

Project Description: Notification of Intent to Prepare an Environmental Impact Statement at the National Naval Medical Center

Project Location: Montgomery County

Clearinghouse Contact: Bob Rosenbush

Dear Mr. Zulick:

We are forwarding the comments made by the Maryland Departments of Natural Resources, Transportation, and this Department, including the Maryland Historical Trust regarding the referenced project for your information.

The Maryland Historical Trust (the Trust) stated that the proposed undertaking has potential to affect historic properties. The Trust's finding of consistency is contingent upon the requirement that further consultation between the Applicant, and the Trust take place: pursuant to Section 106 of the National Historic Preservation Act.

The Maryland Department of Transportation found the project to be generally consistent with its plans, programs, and objectives, but included these qualifying comments. The Maryland Department of Transportation affirmed that "as far as can be determined at this time, the subject has no unacceptable impacts on the plans or programs of the Department of Transportation."

The Maryland Department of Natural Resources, and the Maryland Department of Planning found the project to be consistent with its plans, programs, and objectives.

Should you have any questions, contact the State Clearinghouse staff person noted above at 410-767-4490 or through e-mail at brosenbush@mdp.state.md.us. Your cooperation and attention to the review process is appreciated

Sincerely,



Linda C. Janey, J.D., Director
Maryland State Clearinghouse for Intergovernmental Assistance

LCJ:BR

cc: Ray Dintaman - DNR
Cindy Johnson - MDOT
Beth Cole - MHT

06-1240_OLRR.OTH.doc



67

National Institutes of Health
Bethesda, Maryland 20892

www.nih.gov

January 4, 2007

Commander John Zulick
Officer in Charge - BRAC
National Naval Medical Center
8901 Wisconsin Ave.
Bethesda, MD 20889

Commander Zulick,

As a federal neighbor, the National Institutes of Health (NIH) shares many things with the National Naval Medical Center (NNMC). The two facilities share: borders that abut Rockville Pike between Cedar Lane and Jones Bridge Road; intersections that provide access to both our facilities (i.e., South Drive/Rockville Pike); a local transit center (i.e., Medical Center Metrorail Station) that offer rapid rail and regional bus service; and a long and distinguished history of service to the nation and world. We support your need for expansion to meet the Base Realignment and Closure (BRAC) required closures yet need to voice some concerns for the record.

The BRAC proposal to relocate Walter Reed Army Medical Center (WRAMC) to the National Naval Medical Center has environmental implications for NIH, and therefore we ask that you address these in your Draft Environmental Impact Statement (EIS) implementing the 2005 BRAC decision to relocate WRAMC to the NNMC. Among the issues of concern to us are:

1. Potential increases in peak hour traffic congestion on Rockville Pike (Route 355), Jones Bridge Road, Cedar Lane, and possibly Old Georgetown Road (Route 187), the principal access roads to our Bethesda campus. Planned improvements to I-495, I-270, Route 355, or Maryland 187, including interchange upgrades, intersection improvements, or traffic signalization changes needed for BRAC that could impact our employees' and patients' ability to access the campus. Due to potential traffic congestion, NNMC is encouraged to work with the State Highway Administration and the county to expedite the three Route 355 (Rockville Pike) highway projects that are "closest" to NIH and maximize use of Jones Bridge Road entrances for patients and employees.
2. Greater transit usage at the Medical Center Metrorail Station. Because WMATA operates the station on the Bethesda campus under an easement, any changes to the station and the supporting facilities (e.g. bus lanes, kiss-and-ride area, sidewalks, escalators) have the potential to affect NIH employees or operations. The Department of Navy should consider improvements to the South Drive Metro entrance, coordinating these with the NIH in advance. Navy, WMATA,

Ride-On, and NIH share the South Drive/Route 355 intersection so it is extremely important that this area function properly. This needs to be addressed in the Draft EIS. Furthermore, we expect that with the development of our Gateway Center just south of this point, pedestrian and vehicular traffic at this intersection will grow, further increasing the potential for congestion.

3. Traffic demand management (TDM) and the measures Navy proposes to put in place to lessen the impact of the planned BRAC action are of interest to us as well. These should be in place prior to the opening of the new WRAMC. NIH has a comprehensive TDM program and we'd be happy to share it with you if you would like to discuss this further.
4. The plans for establishing a centralized information source for carpooling, vanpooling, public and other alternative transportation options will be important to lessening traffic effects. The NIH has a similar Employee Transportation Services Office (ETSO) which has been very successful in reducing Single Occupant Vehicles (SOVs) and can coordinate with the NNMC's office on this.
5. As you know, WRAMC generates significant air traffic in terms of helicopters coming and going, which means possible additional noise and safety issues that could impact NIH patients and buildings.
6. Infrastructure upgrades, enhancements, and improvements are or will need to be planned to improve pedestrian and bicyclist' pathways leading to the Metro facility and to and from the Bethesda Central Business District.
7. Several joint ventures with the NIH have been discussed or eluded to Navy's scoping presentation. Please identify those resources you would readily consider for shared implementation with the NIH and how you would implement if the NIH is not able to share said resources.
8. We expect an increase demand on local utilities in the area of NNMC due to BRAC-related expansion. This expansion could impact peak usage and available capacity within existing lines. Please indicate how Navy will minimize this potential.
9. Increases to impervious surface at NNMC could lead to further deterioration of our local streams which flow to Rock Creek. The NIH has undertaken several major actions to reduce stormwater flows and improve water quality. We would encourage the NNMC to follow our lead in development of your site.

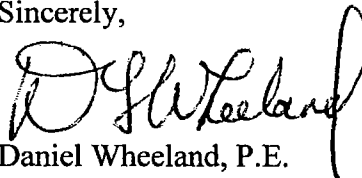
Finally, the proposed BRAC action offers opportunities for us to work closer in coordinating the development of our respective sites and lessen the impact of the planned move of WRAMC to Navy Medical. Based on our recent experience with the update to our NIH Bethesda Master Plan, we believe the National Capital Planning Commission, the State Highway Administration, Montgomery County, and MNCPPC will expect this of us.

Some of the things that we should explore include:

- coordinating the highway signing of our two facilities so that employees, patients, and visitors are directed to travel routes that can best accommodate their needs;
- emergency planning and strategies to coordinate evacuation routes and plans;
- investigating opportunities for sharing support services and facilities where they are present and can absorb additional demands (e.g. NIH's Commercial Vehicle Inspection Facility);
- coordinating any needed infrastructure changes so that the changes meet both our needs as the improvements are planned and designed; and
- looking into employee housing needs created by the BRAC action (particularly for lower salaried employees) in addition to short-term housing for patients and patient families.

As federal agencies that share resources in the Bethesda area (e.g. roadways, utility lines) and with special expertise relevant to Navy's BRAC action, we request that Navy designate NIH as a Cooperating Agency for purposes of its NEPA action. Additionally, we suggest regular meetings between our two agencies to discuss common issues as you conduct your master planning and BRAC planning processes. Please let me know if you would like to discuss this further. We look forward to working with you on a more collaborative approach to minimize impacts and increase the efficiencies of our two operations.

Sincerely,



Daniel Wheeland, P.E.
Director, Office of Research Facilities
National Institutes of Health
9000 Rockville Pike
Bldg. 13 Rm 201
Bethesda, MD 20892

66



MARYLAND DEPARTMENT OF THE ENVIRONMENT

1800 Washington Boulevard • Baltimore, Maryland 21230

410-537-3000 • 1-800-633-6101 • <http://www.mde.state.md.us>

Martin O'Malley
Governor

Shari T. Wilson
Acting Secretary

Anthony G. Brown
Lt. Governor

January 19, 2007

Office in Charge – BRAC
NNMC
8901 Wisconsin Avenue
Bethesda, MD 20889

RE: State Application Identifier: MD20061212-1240
Project: Notification of Intent to Prepare an Environmental Impact Statement at the
National Naval Medical Center

To Whom It May Concern:

Thank you for providing the Maryland Department of the Environment (MDE) with the opportunity to comment on the above-referenced project. Copies of the documents were circulated throughout MDE for review, and it has been determined that this project is consistent with MDE's plans, programs and objectives.

Again, thank you for giving MDE the opportunity to review this project. If you have any questions or need additional information, please feel free to call me at (410) 537-4120.

Sincerely,

Joane D. Mueller
MDE Clearinghouse Coordinator
Technical and Regulatory Services Administration

cc: Bob Rosenbush, State Clearinghouse

STAFF RECOMMENDATION

Ellyn Goldkind

NCPC File No. 6759



WALTER REED NATIONAL MILITARY MEDICAL CENTER MEDICAL FACILITY ADDITIONS

8901 Rockville Pike
Montgomery County, Bethesda, Maryland

Submitted by the United States Department of the Navy

September 27, 2007

Abstract

The United States Department of the Navy has submitted concept designs for new medical facility additions to the Walter Reed National Military Medical Center, located at 8901 Rockville Pike in Bethesda, Maryland. The project will include renovation of existing facilities as well as construction of two new buildings to accommodate the medical service expansion required by the 2005 BRAC recommendations. The new buildings and related utility/site upgrades will accommodate a new outpatient facility and expanded diagnostic and critical care functions of the Medical Center.

Commission Actions Requested by Applicant

Approval of concept design for the Walter Reed National Military Medical Center at Bethesda pursuant to 40 U.S.C. § 8722(a) and (b)(1).

Executive Director's Recommendation

The Commission:

Comments favorably on the concept design for the new medical facility additions to the Walter Reed National Military Medical Center, Bethesda, with the exception of the fenestration pattern, as shown on NCPC Map File No. 3101.30(38.00)42383.

Requires that the following items be included in the preliminary design submission:

- Revised elevations indicating a more compatible fenestration pattern, and including dimensions and material notations.
- Information regarding the buildings' related site features, including lighting (proposed fixtures, locations, and foot-candle levels).

- Samples of the proposed finish materials.
- Completed Environmental Impact Statement, Master Plan, and Transportation Management Plan for the Walter Reed National Military Medical Center.
- A summary of planned staffing and related parking accommodations, as will be determined by the completed Environmental Impact Statement, Master Plan, and Transportation Management Plan.
- Completed Section 106 consultation for the project and a final determination of effect from the Maryland Historical Trust.

Notes that during project development the applicant should address the following comments by other affected State and county entities:

- The proposed buildings are generally consistent with agency plans, programs, and objectives.
- The Maryland Historical Trust accepted the concept design with regard to location, footprint, and massing; and requested Section 106 consultation to move forward with fenestration design, materials selection, and other design and planning details.
- Environmental effects of the proposed project require additional review, coordination, and compliance with applicable regulations. Areas of potential effect include, but are not limited to, traffic and parking; hazardous materials and waste; construction materials and methods; energy sources; and emissions.
- The project has not yet been commented on by the Montgomery County Planning Board, and recommendations of the Maryland-National Capital Park and Planning Commission are subject to, and contingent upon, the comments of the Planning Board.

Notes that the Commission's final action will take into account the findings of the Environmental Impact Statement, and the content of the Master Plan and Transportation Management Plan for the Medical Center, currently under development.

* * *

PROJECT DESCRIPTION

Background

As a result of the 2005 Base Realignment and Closure (BRAC) recommendations, the existing Walter Reed Army Medical Center (WRAMC) located in Washington, D.C., will be closed and military medical services in the National Capital Area (NCA) will be realigned between two primary facilities serving the northern and southern portions of the NCA. The southern NCA will be served by a new hospital at Ft. Belvoir, Virginia; and the existing National Naval Medical Center (NNMC), Bethesda, Maryland will be expanded and renovated to serve the northern NCA. All existing tertiary (sub-specialty and complex care) medical services currently provided at WRAMC will be relocated to this northern facility. The expanded NNMC will be renamed the Walter Reed National Military Medical Center, Bethesda (WRNMMC) and is the location of the current project. As a funded project associated with BRAC, work is required to be completed by September 2011.

The Navy is currently in the process of updating the Master Plan, including a Transportation Management Plan (TMP) for the site, as well as preparing an Environmental Impact Statement (EIS) in response to the pending expansion related to BRAC. Due to the ambitious timeline to implement BRAC recommendations, this concept design has been submitted prior to completion of the Master Plan update and environmental analysis, and has therefore been referred to affected agencies through the Maryland State Clearinghouse. The agencies that have been included in that referral are the Maryland Departments of Transportation, the Environment, and Natural Resources; the County of Montgomery; the Maryland-National Capital Park and Planning Commission in Montgomery County; the Metropolitan Washington Council of Governments, and the Maryland Department of Planning; including the Maryland Historical Trust.

The 20-story main tower with connecting L-shaped wings (“Building One”) of the NNMC was listed on the National Register of Historic Places in 1978; part of its significance is due to its design concept that originated with a vision of President Franklin D. Roosevelt. Inspired by the Nebraska State Capitol (Lincoln, NE, 1924), President Roosevelt sketched a rough plan and elevation on White House stationery for the new Naval Hospital – the spirit of his design was brought to fruition by Architect Paul Cret and the Navy architectural staff under Fredrick W. Southworth. The integrity of the tower remains largely intact, and is a highly visible landmark and one of the key defining elements of the campus.

Site

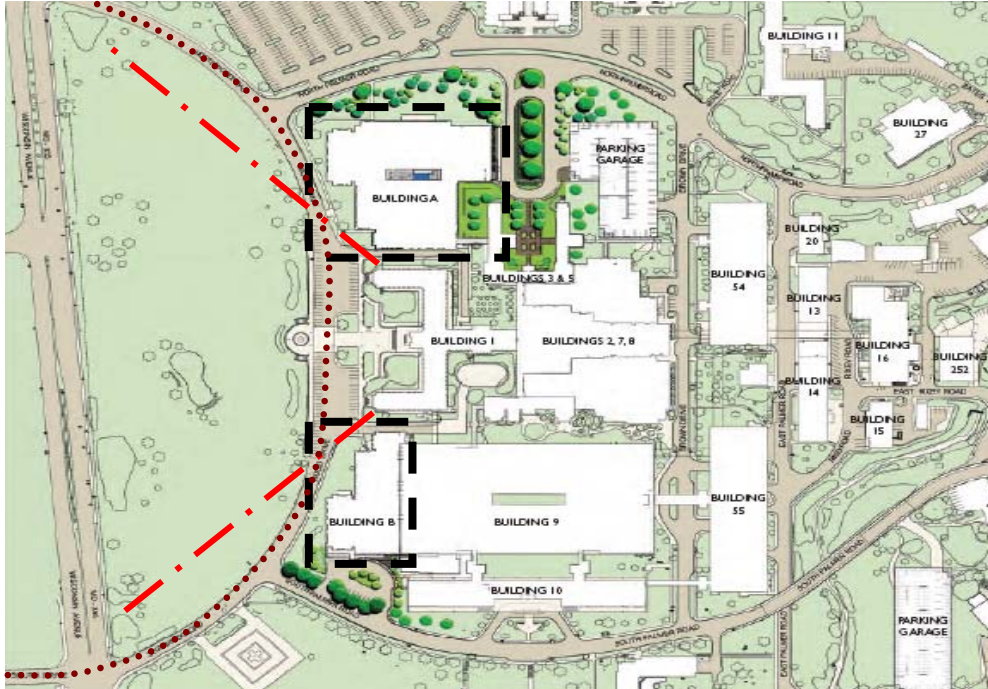
The gradually sloping landscape and terraces of the Medical Center were also designed by Paul Cret as part of the original construction. The tower and wings of Building One are centered on a circular drive (Wood Road) that spans between the north and south gates marking the Campus entry points from Wisconsin Avenue. Wood Road, along with the north and south retaining walls that extend 215 feet from the central terrace, define the edge of the semicircular central terrace that extends 130 feet from the building entrance.

In the center of the front lawn lie a granite and bronze flagpole and base, together reaching a height of 90 feet. Two large anchors rest to the north and south of the flagpole, and on the western side of the base there are three steps leading down the hillside.

Proposal

The United States Department of the Navy has submitted concept designs for additions and site/utility improvements to the medical facility at the Walter Reed National Military Medical Center (WRNMMC) at Bethesda; the proposal is the result of thorough assessment of the BRAC requirements and subsequent master planning. As such, the general size, scale, massing and architectural character is not expected to change significantly and the concept design as presented will proceed through design and construction.

The proposed concept includes renovation of 261,000 square feet of the existing medical facility, construction of a new six-story building (Building A) of 533,000 square feet, and construction of a four-story addition (Building B) of 157,000 square feet to the west of Building Nine. The new buildings will flank the existing Building One of the campus, and each will have symmetrical facades, western footprints around Wood Drive, and roof heights.



SITE/LANDSCAPING PLAN

The new buildings will be constructed of pre-cast concrete with a stone base and aluminum-frame windows; incorporation of recessed vertical window openings will be used relate to the geometry in the fenestration pattern of Building One. It is important to note that the windows shown in the proposal are schematic in nature and are likely to change with the next phase of design. Due to the difference in floor-to-floor heights between Buildings A and B, creation of symmetrical fenestration of both buildings is an acknowledged design challenge.

Site improvements related to the new buildings will include landscaping and utility/infrastructure improvements to the central equipment plant. The courtyards to the rear of Building One are contributing elements of the National Historic Landmark and will be preserved; neither construction from this project, nor from future projects anticipated as part of the pending Master Plan update, will alter the existing courtyard configurations or materials, and any landscaping that is disturbed will be replaced in-kind.



SITE PERSPECTIVE – APPROACH ON WOOD DRIVE

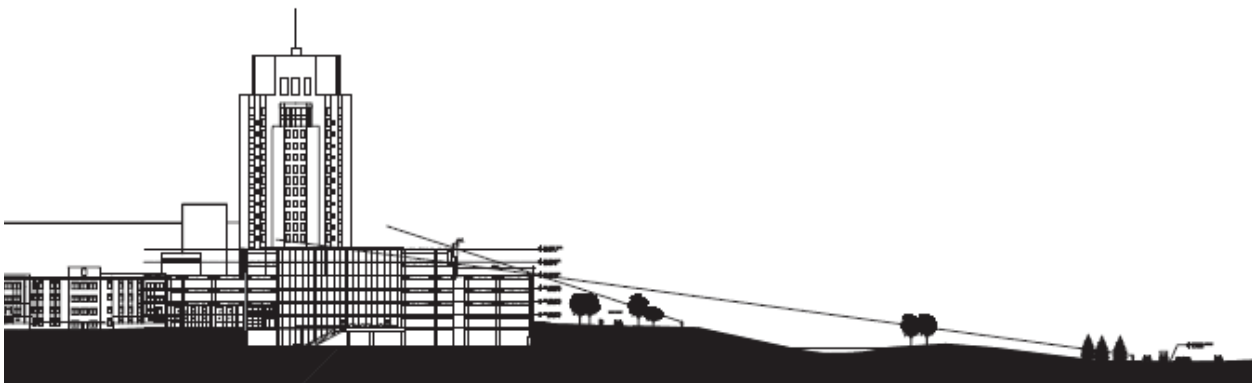
Several design parameters evolved as a result of design consultation with NCPC and MD-SHPO staffs, including the following:

- The buildings must be symmetrical about Building One.
- The adjacent front planes of Building A (Outpatient Care Pavilion) and Building B (Inpatient Addition) cannot be forward (west) of the front of the wings of Building One.
- The view shed west of Building One is to remain unobstructed. The west footprints of Buildings A and B, along Wood Drive, are to step away from the wings of Building One.
- The front walls of Buildings A and B cannot be higher than the wings of Building One.
- Building heights may be permitted to be higher than the wings of Building One provided their front walls are set back to minimize visibility from within the site.
- The overall heights of Buildings A and B are to be the same.
- New construction should respect, and enhance where possible, the historical importance of the other buildings and courtyards on the site.

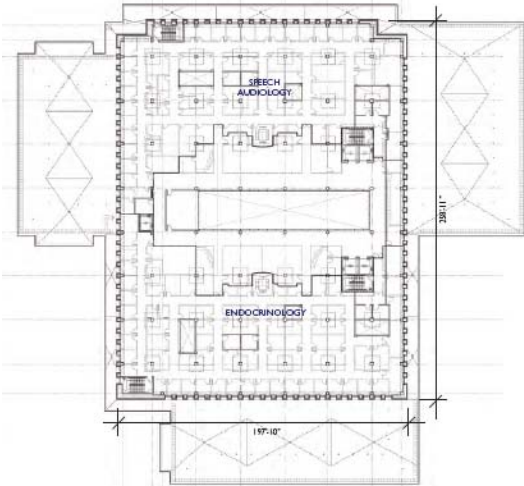
Additionally, a number of sustainable design features and energy efficient systems will be incorporated into all new construction; the buildings will be certified according to the US Green Building Council's Leadership in Energy and Environmental Design (LEED) program.



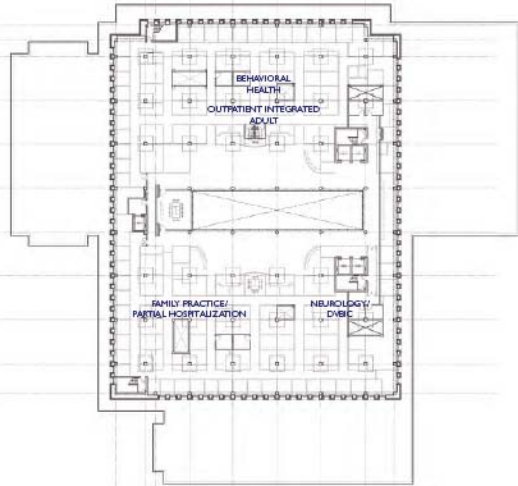
BUILDING ELEVATIONS



SITE SECTION – SIGHT LINES TO NEW BUILDINGS



FIFTH FLOOR



SIXTH FLOOR

BUILDING A

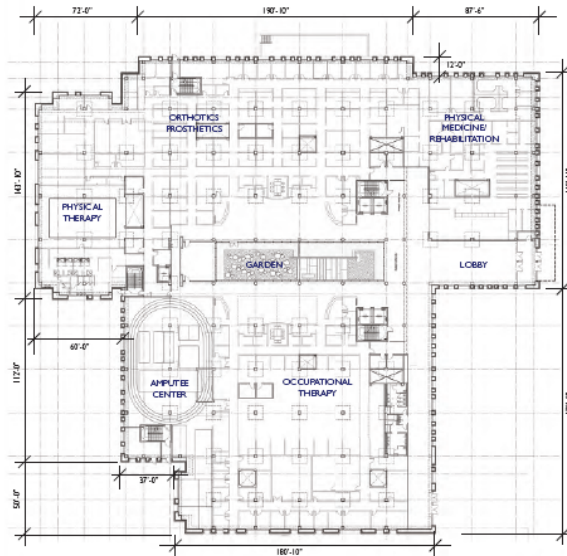


THIRD FLOOR



FOURTH FLOOR

BUILDING A



FIRST FLOOR



SECOND FLOOR

BUILDING A

FLOOR PLANS – BUILDING “A”

PROJECT ANALYSIS

Staff finds that the proposed building additions meet the design parameters that were formulated as part of consultation with NCPC and MD-SHPO staffs with regard to footprint, building frontage/setbacks, symmetry, building heights, and preservation of view sheds and historic landscapes. Additionally the scale, massing, and material selection for the new buildings are well developed and appropriate additions to the WRNMMC medical facility; the applicant and design team are to be commended for their ongoing consultation and responsiveness to NCPC and MD-SHPO staffs, including site analysis to minimize visibility of upper portions of the new buildings from within the site.

Staff requests that the applicant provide, with the preliminary site and building plans, revised elevations that include more compatible fenestration patterns; additional information with regard to the building's overall size and height; a more fully developed site and landscaping plan; and information on proposed exterior building/site lighting (including proposed fixtures, locations, and foot-candle levels). Information and samples of the proposed finish materials should also be submitted.

A summary of planned staffing should be included at the preliminary and final design stages, as will be determined by the ongoing EIS and Master Planning processes. Related parking accommodations for the proposed buildings will be reviewed under subsequent submissions, and should comply with parking ratios established in the current Comprehensive Plan for the National Capital.

Staff encourages the applicant to initiate Section 106 consultation as soon as possible, as requested by the Maryland Historical Trust, in order to define the undertaking and "area of potential effect," to identify all eligible historic properties in the area of potential effect, and to provide a determination of effect. The Section 106 review should result in a determination of the impacts to historic structures/landscapes that will result from this undertaking, as well as any actions to minimize/mitigate those impacts.

CONFORMANCE

Comprehensive Plan for the National Capital

Staff has determined that the proposed project is consistent with the *Comprehensive Plan for the National Capital: Federal Elements*, in particular policies in the Federal Workplace Element.

Federal Capital Improvements Program

This project is not included in the current list of projects included in the FCIP for the WRNMMC. The applicant should add this project to the 2009-2014 version of the FCIP, along with other projects that are identified as the current Master Plan update is completed.

National Environmental Policy Act

An Environmental Impact Statement (EIS) is currently being prepared for the WR-NMMC campus; this work is related to a Master Plan update that is being carried out concurrently. While an EIS is not required at the Concept Design review stage, a completed EIS will be required as part of the preliminary design submission. Since the EIS is used to inform decisions for the campus as a whole, findings presented in that document have the potential to change the Staff analyses and/or recommendations at later reviews.

National Historic Preservation Act (NHPA)

Review of the proposed project, per Section 106 of the NHPA, is not required at the concept design stage. However, the applicant has been in consultation with the Maryland Historic Trust (SHPO) and has made several design changes as a result of that consultation. Formal Section 106 consultation with the SHPO is required as part of the preliminary design submission; the SHPO has requested that this formal review process be initiated in the short term.

CONSULTATION

Maryland Historical Trust (MHT)

The MHT accepted the concept design with regard to location, footprint, and massing; and requested Section 106 consultation to move forward with fenestration design, materials selection, and other design and planning details.

Maryland National Capital Park and Planning Commission in Montgomery County (M-NCPPC)

The proposed project is generally consistent with M-NCPPC plans, programs, and objectives; however, there are some concerns with future parking and traffic impacts. Since the Montgomery County Planning Board has not yet commented on this project, M-NCPPC's recommendation is contingent on the Applicant considering and addressing any problems or conditions that are identified by the Planning Board.

Maryland Department of Transportation

The proposed project is generally consistent with Maryland Department of Transportation plans, programs, and objectives, and without any unacceptable impact that could be determined at this stage of the project.

Maryland Department of the Environment (MDE)

Comments from the MDE identified various potential environmental effects of the proposed project that require additional review, coordination, and compliance with applicable regulations. Areas of potential effect include, but are not limited to, traffic and parking; hazardous materials and waste; construction materials and methods; energy sources; and emissions.

Maryland Department of Planning

The proposed project is generally consistent with Maryland Department of Planning plans, programs, and objectives. Qualifying comments are anticipated, but have not yet been received, from the Maryland Department of Planning.

Maryland Department of Natural Resources

The proposed project is generally consistent with Maryland Department of Natural Resources plans, programs, and objectives.

Metropolitan Washington Council of Governments

The proposed project is generally consistent with plans, programs, and objectives of the Metropolitan Washington Council of Governments.

COMMISSION ACTION

NCPC File No. 6759



**WALTER REED NATIONAL MILITARY MEDICAL CENTER
MEDICAL FACILITY ADDITIONS
8901 Rockville Pike
Montgomery County, Bethesda, Maryland**

Submitted by the United States Department of the Navy

October 4, 2007

Commission Action Requested by Applicant

Approval of concept design pursuant to 40 U.S.C. § 8722(a) and (b)(1).

Commission Action

The Commission:

Comments favorably on the concept design for the new medical facility additions to the Walter Reed National Military Medical Center, Bethesda, with the exception of the fenestration pattern, as shown on NCPC Map File No. 3101.30(38.00)42383.

Requires that the following items be included in the preliminary design submission:

- Revised elevations indicating a more compatible fenestration pattern, and including dimensions and material notations.
- Information regarding the buildings' related site features, including lighting (proposed fixtures, locations, and foot-candle levels).
- Samples of the proposed finish materials.
- Completed Environmental Impact Statement, Master Plan, and Transportation Management Plan for the Walter Reed National Military Medical Center.
- A summary of planned staffing and related parking accommodations, as will be determined by the completed Environmental Impact Statement, Master Plan, and Transportation Management Plan.
- Completed Section 106 consultation for the project and a final determination of effect from the Maryland Historical Trust.

Notes that during project development the applicant should address the following comments by other affected State and county entities:

- The proposed buildings are generally consistent with agency plans, programs, and objectives.

- The Maryland Historical Trust accepted the concept design with regard to location, footprint, and massing; and requested Section 106 consultation to move forward with fenestration design, materials selection, and other design and planning details.
- Environmental effects of the proposed project require additional review, coordination, and compliance with applicable regulations. Areas of potential effect include, but are not limited to, traffic and parking; hazardous materials and waste; construction materials and methods; energy sources; and emissions.
- The project has not yet been commented on by the Montgomery County Planning Board, and recommendations of the Maryland-National Capital Park and Planning Commission are subject to, and contingent upon, the comments of the Planning Board.

Notes that the Commission's final action will take into account the findings of the Environmental Impact Statement, and the content of the Master Plan and Transportation Management Plan for the Medical Center, currently under development.

Deborah B. Young
Secretary to the National Capital Planning Commission

**Formal Correspondence from the Navy to Local, State
and Federal Agencies and Elected Officials**



DEPARTMENT OF THE NAVY

NATIONAL NAVAL MEDICAL CENTER
BETHESDA, MARYLAND 20889-5600

IN REPLY REFER TO

6320
Ser 00F0/74
January 9, 2006

The Honorable Chris Van Hollen
House of Representatives
1419 Longworth H.O.B.
Washington DC 20515

Dear Representative Van Hollen:

This is in response to your inquiry of December 28, 2006 regarding the proposed expansion of the National Naval Medical Center, Bethesda, MD (NNMC) by the Defense Base Closure and Realignment Act of 1990, as amended. The proposed expansion is being analyzed under the National Environmental Policy Act using an Environmental Impact Statement (EIS), supplemented by an updated Installation Master Plan.

One of our responsibilities throughout this process is to ensure that BRAC-related work is completed by the mandated deadline of September 15, 2011. Backward planning directs that an aggressive schedule will be required for completion of this significant undertaking. To maintain that schedule, yet ensure we receive comments from all who wish to contribute during this early stage of the process, the Scoping Period officially closed on January 4, 2007. However, we will continue to accept public comments through your requested date of February 3, 2007. During this period we will also publicize and hold at least one Public Availability Session to solicit additional public comments.

To ensure potential impacts are properly addressed, we will utilize all comments received and will continue meeting with Federal, State and Local officials to discuss items pertinent to their respective areas. As mentioned in your letter, traffic, bicycle and pedestrian safety and accessibility, noise, air quality, effects on public transit, and other issues will be considered during the process. Mitigation recommendations will be included in the analysis, commensurate with the changes brought on by this proposal. Additional public comments will be solicited next in this process with the publication of the Draft EIS, slated for June 2007.

If I can be of further assistance, my point of contact is Lieutenant Commander John Eckenrode, NC, USN, BRAC Officer in Charge, at DSN 295-6799 or commercial (301)295-6799.

Sincerely,

A handwritten signature in blue ink that reads "Adam Robinson".

A. M. ROBINSON, JR.
Rear Admiral, Medical Corps
U. S. Navy
Commander



DEPARTMENT OF THE NAVY

NATIONAL NAVAL MEDICAL CENTER
BETHESDA, MARYLAND 20889-5600

IN REPLY REFER TO

6320
Ser 00F0/75
January 9, 2006

The Honorable William A. Bronrott
Maryland House of Delegates, District 16
Room 411 Lowe House Office Building
84 College Avenue
Annapolis, MD 21401-1991

Dear Delegate Bronrott:

This is in response to your inquiry of December 28, 2006 regarding the proposed expansion of the National Naval Medical Center, Bethesda, MD (NNMC) by the Defense Base Closure and Realignment Act of 1990, as amended. The proposed expansion is being analyzed under the National Environmental Policy Act using an Environmental Impact Statement (EIS), supplemented by an updated Installation Master Plan.

One of our responsibilities throughout this process is to ensure that BRAC-related work is completed by the mandated deadline of September 15, 2011. Backward planning directs that an aggressive schedule will be required for completion of this significant undertaking. To maintain that schedule, yet ensure we receive comments from all who wish to contribute during this early stage of the process, the Scoping Period officially closed on January 4, 2007. However, we will continue to accept public comments through your requested date of February 3, 2007. During this period we will also publicize and hold at least one Public Availability Session to solicit additional public comments.

To ensure potential impacts are properly addressed, we will utilize all comments received and will continue meeting with Federal, State and Local officials to discuss items pertinent to their respective areas. As mentioned in your letter, traffic, bicycle and pedestrian safety and accessibility, noise, air quality, effects on public transit, and other issues will be considered during the process. Mitigation recommendations will be included in the analysis, commensurate with the changes brought on by this proposal. Additional public comments will be solicited next in this process with the publication of the Draft EIS, slated for June 2007.

If I can be of further assistance, my point of contact is Lieutenant Commander John Eckenrode, NC, USN, BRAC Officer in Charge, at DSN 295-6799 or commercial (301)295-6799.

Sincerely,

A handwritten signature in blue ink that reads "Adam Robinson".

A. M. ROBINSON, JR.
Rear Admiral, Medical Corps
U. S. Navy
Commander



DEPARTMENT OF THE NAVY

NATIONAL NAVAL MEDICAL CENTER
BETHESDA, MARYLAND 20889-5600

IN REPLY REFER TO

6320
Ser 00F0/76
January 9, 2006

The Honorable Roger Berliner
Member, Montgomery County Council, District 1
100 Maryland Avenue
Rockville, MD 20850

Dear Council Member Berliner:

This is in response to your inquiry of December 28, 2006 regarding the proposed expansion of the National Naval Medical Center, Bethesda, MD (NNMC) by the Defense Base Closure and Realignment Act of 1990, as amended. The proposed expansion is being analyzed under the National Environmental Policy Act using an Environmental Impact Statement (EIS), supplemented by an updated Installation Master Plan.

One of our responsibilities throughout this process is to ensure that BRAC-related work is completed by the mandated deadline of September 15, 2011. Backward planning directs that an aggressive schedule will be required for completion of this significant undertaking. To maintain that schedule, yet ensure we receive comments from all who wish to contribute during this early stage of the process, the Scoping Period officially closed on January 4, 2007. However, we will continue to accept public comments through your requested date of February 3, 2007. During this period we will also publicize and hold at least one Public Availability Session to solicit additional public comments.

To ensure potential impacts are properly addressed, we will utilize all comments received and will continue meeting with Federal, State and Local officials to discuss items pertinent to their respective areas. As mentioned in your letter, traffic, bicycle and pedestrian safety and accessibility, noise, air quality, effects on public transit, and other issues will be considered during the process. Mitigation recommendations will be included in the analysis, commensurate with the changes brought on by this proposal. Additional public comments will be solicited next in this process with the publication of the Draft EIS, slated for June 2007.

If I can be of further assistance, my point of contact is Lieutenant Commander John Eckenrode, NC, USN, BRAC Officer in Charge, at DSN 295-6799 or commercial (301)295-6799.

Sincerely,

A handwritten signature in blue ink that reads "Adam Robinson".

A. M. ROBINSON, JR.
Rear Admiral, Medical Corps
U. S. Navy
Commander



DEPARTMENT OF THE NAVY

NATIONAL NAVAL MEDICAL CENTER
BETHESDA, MARYLAND 20899-5600

IN REPLY REFER TO:

5900
SER 504C/3285
NOV 27 2007

Mr. John P. Wolfin
U.S. Fish & Wildlife Service
177 Admiral Cochrane Drive
Annapolis, MD 21401

Subject: ENVIRONMENTAL IMPACT STATEMENT FOR ACTIVITIES TO IMPLEMENT
THE 2005 BRAC ACTIONS AT NATIONAL NAVAL MEDICAL CENTER, BETHESDA,
MARYLAND

Dear Mr. Wolfin:

The Department of the Navy is preparing an Environmental Impact Statement (EIS) to examine the potential environmental impacts of the relocation of Walter Reed Army Medical Center (WRAMC) activities from the District of Columbia to the National Naval Medical Center (NNMC) in Bethesda, Maryland per Public Law 101-510, the Defense Base Closure and Realignment Act of 1990 (BRAC Law) as amended in 2005. The specific BRAC recommendation is to:

"Realign Walter Reed Army Medical Center, Washington, DC, as follows: relocate all tertiary (sub-specialty and complex care) medical services to National Naval Medical Center, Bethesda, MD, establishing it as the Walter Reed National Military Medical Center Bethesda, MD; relocate Legal Medicine to the new Walter Reed National Military Medical Center Bethesda, MD; relocate sufficient personnel to the new Walter Reed National Military Medical Center Bethesda, MD, to establish a Program Management Office that will coordinate pathology results, contract administration, and quality assurance and control of Department of Defense (DoD) second opinion consults worldwide; relocate all non-tertiary (primary and specialty) patient care functions to a new community hospital at Fort Belvoir, VA."

The Navy's Proposed Action is to provide necessary facilities to implement BRAC 2005 actions at NNMC. The alternatives being evaluated in the EIS are:

1. **Alternative One, Preferred Alternative:** Under Alternative One, Preferred Alternative, the Navy proposes to add to NNMC approximately 1,144,000 square feet (SF) or 106,000 square meters (m²) of building construction, provide approximately 508,000 SF (47,193 m²) of building renovation to existing space, provide approximately 824,000 SF (76,552 m²) of new parking facilities, and accommodate approximately 2,500 additional staff. The new construction or improvements to existing facilities would provide medical care and administration additions and alterations, a Traumatic Brain Injury/Post Traumatic Stress Disorder Intrepid Center of

Excellence facility, permanent and temporary lodging facilities (Bachelor Enlisted Quarters and Fisher Houses™) a new physical fitness center, additional parking, and road and utility improvements on the Installation as needed to support the new facilities.

2. **Alternative Two:** Under Alternative Two, the Navy proposes facilities for the same requirements as for Alternative One, Preferred Alternative. However, the location and choice of new construction versus renovation of some facilities would differ from Alternative One, Preferred Alternative. Alternative Two would add to NNMC approximately 1,230,000 SF (114,271 m²) of new building construction, approximately 423,000 SF (39,298 m²) of building renovation, and provide approximately 824,000 SF (76,552 m²) of new parking facilities. The number of staff and patients would be the same as under Alternative One, Preferred Alternative.

3. **No Action Alternative:** This alternative is required by statute and evaluates the impacts at NNMC in the event that additional growth from BRAC actions does not occur. Implementation of the No Action Alternative would require the Congress to change the existing BRAC law.

All the proposed projects under either Alternative One or Two would convert lands with either existing development or landscaped areas into developed facilities and associated landscape vegetation.

Note that the action alternatives have changed from the ones presented in the Notice of Intent published in the 21 November 2006 Federal Register, which included an option to evaluate non-BRAC actions in addition to the BRAC Actions. The Department of Defense has subsequently decided to concentrate entirely on implementation of the BRAC mandate through Warrior Care in this EIS. Non-BRAC related future growth, support activities, or changes to the installation are not addressed as an alternative within this EIS.

The EIS is prepared pursuant to section (102)(2)(c) of the National Environmental Policy Act (NEPA) of 1969, the regulations implemented by the Council on Environmental Quality (CEQ) (40 CFR Parts 1500 - 1508), OPNAVINST 5090.1C the Navy's Environmental and Natural Resources Program Manual, and the Supplemental Environmental Planning Policy, 23 September 2004.

The purpose of this correspondence is to request a list of federally listed species that may be impacted by this proposed project. Because of its location in a highly urbanized environment in Montgomery County, Maryland and previous studies indicating the only species of concern are transient migrating birds, it is unlikely that the proposed realignment actions at NNMC will affect any federally endangered or threatened species or locally sensitive species. NNMC

is currently doing additional site investigations. However, we would appreciate input from your office. A project area map that shows the installation location is attached as well as maps showing the two action alternatives (Enclosures 1, 2, and 3).

A letter is also being sent to the Maryland Department of Natural Resources to solicit their input.

If you have any questions or require additional information, please contact either Sam Brandt at (301) 295-2527 or Laura Broussard at (301) 295-2528. Thank you in advance for your assistance.

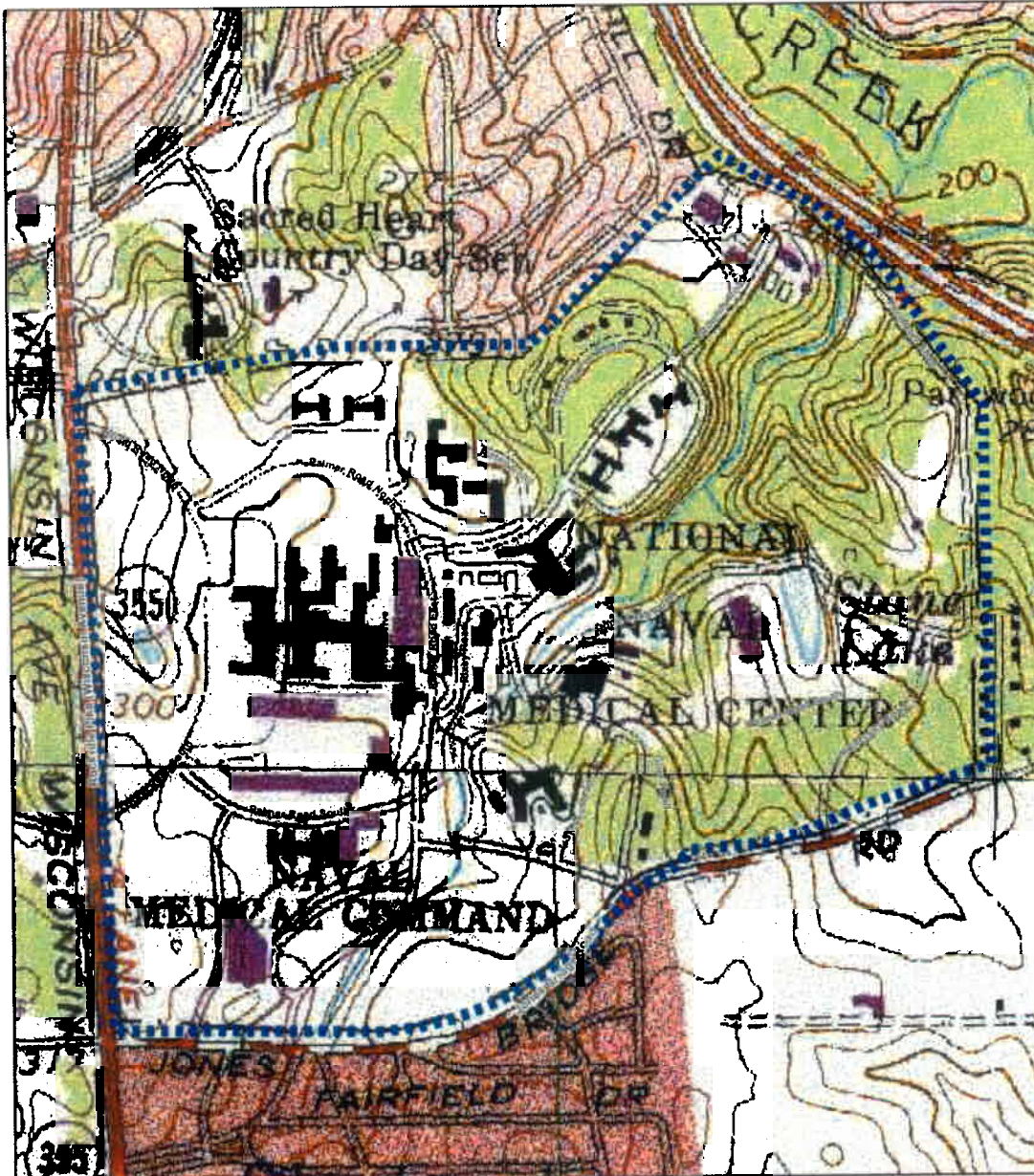
Sincerely,




J. A. ZULICK
Commander, CEC, U.S. Navy
Head, Facilities Management Department
By direction of the Commander

Enclosures: 1 - Location of NNMC
2 - Alternative One, Preferred Alternative
3 - Alternative Two


Location of NNMC




Legend

 NNMC Boundary

**National Naval Medical Center
Bethesda, Maryland**



MAP INDEX

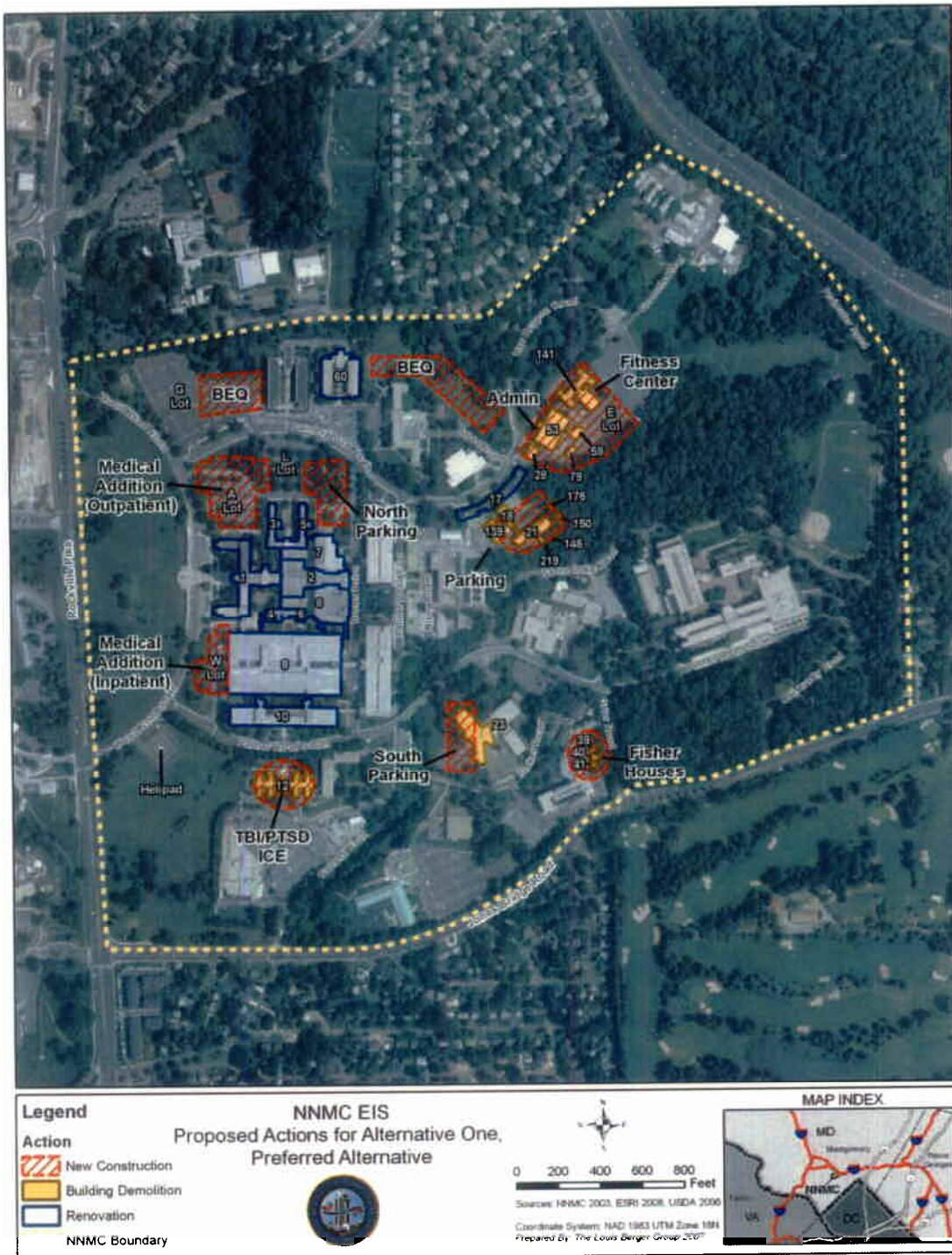


0 200 400 600 800 Feet

Sources: NNMC 2003, ESRI 2008, USGS
Kamington 1980 and Washington West 1984
Quadrangles

Coordinate System: NAD 1983 UTM Zone 18N
Prepared By: The Louis Berger Group 2007

Alternative One, Preferred Alternative



Alternative Two



| Legend | | NNMC EIS | | MAP INDEX | |
|---------------|---------------------|--------------------------------------|--|--|------|
| Action | | Proposed Actions for Alternative Two | | | |
| | New Construction | | | | |
| | Building Demolition | | | 0 200 400 600 800 | Feet |
| | Renovation | | | Sources: NNMC 2003, ESRI 2006, USDA 2006 | |
| | NNMC Boundary | | | Coordinate System: NAD 1983 UTM Zone 18N | |
| | | | | Prepared By: The Louis Berger Group 2007 | |



DEPARTMENT OF THE NAVY

NATIONAL NAVAL MEDICAL CENTER
BETHESDA, MARYLAND 20889-5600

IN REPLY REFER TO:

5900
SER 504E/ 3286

NOV 27 2007

Mr. J. Rodney Little
State Historic Preservation Officer
Attn: Ms. Beth Cole
Maryland Historical Trust
100 Community Place
Crownsville, MD 21032

Subject: **MARYLAND STATE APPLICATION IDENTIFIER 20061212-1240**, ENVIRONMENTAL
IMPACT STATEMENT FOR ACTIVITIES TO IMPLEMENT THE 2005 BRAC ACTIONS AT
NATIONAL NAVAL MEDICAL CENTER, BETHESDA, MARYLAND

Dear Mr. Little:

As you are aware, the 2005 round of decisions taken in accordance with the Base Realignment and Closure Act (BRAC) directed the realignment of many activities from the Walter Reed Army Medical Center in Washington, DC to the National Naval Medical Center in Bethesda, Montgomery County, Maryland. The resulting integrated complex is to be known as the Walter Reed National Military Medical Center at Bethesda.

The Navy has been engaged for over a year in the planning of this major BRAC directed move.

Activities have included efforts to revise the master plan for the property, an early concept design for the Medical Additions project, and an Environmental Impact Statement (EIS) in compliance with the National Environmental Policy Act.

The National Naval Medical Center has been thoroughly evaluated for National Register of Historic Places (NRHP) resources in accordance with Section 110 of NHPA. Notable architectural resources include the Central Tower Block (Building 1) listed on the NRHP, which was designed by Paul P. Cret and inspired by a sketch by President Franklin Roosevelt, and the National Naval Medical Center Bethesda Historic District, determined eligible for the NRHP. Areas of archaeological potential are limited to the northeast portion of the installation due to the extensive disturbance of the majority of the installation land. The front lawn of the Central Tower Block, long recognized as significant for the setting of the landmark building, is the framework for an important view shed.

As noted above, a concept design for the project entitled Medical Additions has already been developed. This project will construct approximately 638,000 SF of new medical care space in the form of a

new Outpatient Building to the north of Building One and an Inpatient Addition that will extend Building 9 to the west as well as renovate existing space in Building 1. A new parking structure is also planned to the east of the new Inpatient Building. Because this project evidently has the greatest potential to impact the historic core complex of the Central Tower Block and its setting, the Navy consulted informally with your staff and others prior to submitting the concept design for review by the National Capital Planning Commission (NCPC) at its October 4, 2007 meeting. NCPC commented favorably on the concept design while noting certain design parameters intended to minimize the impact of the development on historic properties that were to be adhered to during the further development of the design. We appreciate the cooperation of your staff in the formulation of these design parameters. A copy of the NCPC action is enclosed for your information (Enclosure 1).

The BRAC development at Bethesda will include a number of projects with elements of demolition, new construction, and renovation of existing facilities. Several other projects besides the Medical Additions have the potential to affect NRHP eligible cultural resources. All are currently at a master planning or pre-design stage, and some, though not the Medical Additions, have alternative sitings or configurations which will not be resolved until the conclusion of the EIS process.

At this time, the Navy would like to formally initiate consultation in accordance with 36 C.F.R. 800.3 under Section 106 of NHPA on the "Activities to Implement the 2005 BRAC Actions at National Naval Medical Center". We are not yet, however, prepared to make a formal determination of effect within the Section 106 process.

The best available information on this undertaking may be found in the enclosed Description of Proposed Action and Alternatives prepared for the *Draft Environmental Impact Statement (DEIS) for Activities to Implement the 2005 Base Realignment and Closure Actions at National Naval Medical Center, Bethesda*, which is anticipated for release in mid December 2007. The Description of Proposed Action and Alternatives, a map of NNMC and its vicinity, maps of the two action alternatives, and a map of historic resources at NNMC are enclosed as Enclosures 2 through 6.

We look forward to the opportunity to consult with your agency on the next steps in the Section 106 process on this important undertaking.

I would like to thank you in advance for your cooperation in this matter. Our points of contact are Latonya Nimmons who can be reached at (301) 295-2511 or Laura Broussard at (301) 295-2528.

Sincerely,



J. A. ZULICK
Commander, CEC, U.S. Navy
Head, Facilities Management Department
By direction of the Commander

Enclosures: 1 - NCPC Action
2 - Proposed Action and Alternatives
3 - NNMC and Vicinity
4 - Alternative One, Preferred Alternative
5 - Alternative Two
6 - NNMC Historic District

COMMISSION ACTION

NCPC File No. 6759



WALTER REED NATIONAL MILITARY MEDICAL CENTER
MEDICAL FACILITY ADDITIONS
8901 Rockville Pike
Montgomery County, Bethesda, Maryland

Submitted by the United States Department of the Navy

October 4, 2007

Commission Action Requested by Applicant

Approval of concept design pursuant to 40 U.S.C. § 8722(a) and (b)(1).

Commission Action

The Commission:

Comments favorably on the concept design for the new medical facility additions to the Walter Reed National Military Medical Center, Bethesda, with the exception of the fenestration pattern, as shown on NCPC Map File No. 3101.30(38.00)42383.

Requires that the following items be included in the preliminary design submission:

- Revised elevations indicating a more compatible fenestration pattern, and including dimensions and material notations.
- Information regarding the buildings' related site features, including lighting (proposed fixtures, locations, and foot-candle levels).
- Samples of the proposed finish materials.
- Completed Environmental Impact Statement, Master Plan, and Transportation Management Plan for the Walter Reed National Military Medical Center.
- A summary of planned staffing and related parking accommodations, as will be determined by the completed Environmental Impact Statement, Master Plan, and Transportation Management Plan.
- Completed Section 106 consultation for the project and a final determination of effect from the Maryland Historical Trust.

Notes that during project development the applicant should address the following comments by other affected State and county entities:

- The proposed buildings are generally consistent with agency plans, programs, and objectives.

- The Maryland Historical Trust accepted the concept design with regard to location, footprint, and massing; and requested Section 106 consultation to move forward with fenestration design, materials selection, and other design and planning details.
- Environmental effects of the proposed project require additional review, coordination, and compliance with applicable regulations. Areas of potential effect include, but are not limited to, traffic and parking; hazardous materials and waste; construction materials and methods; energy sources; and emissions.
- The project has not yet been commented on by the Montgomery County Planning Board, and recommendations of the Maryland-National Capital Park and Planning Commission are subject to, and contingent upon, the comments of the Planning Board.

Notes that the Commission's final action will take into account the findings of the Environmental Impact Statement, and the content of the Master Plan and Transportation Management Plan for the Medical Center, currently under development.

Deborah B. Young
Secretary to the National Capital Planning Commission

Proposed Action and Alternatives

The Navy's Proposed Action is to provide necessary facilities to implement the BRAC 2005 realignment actions.

To implement the actions directed by the 2005 BRAC 2005 law, the Navy proposes to provide:

- Additional space for inpatient and outpatient medical care as well as necessary renovation of existing medical care space to accommodate the increase in patients
- An Intrepid Center of Excellence (ICE) to meet an urgent need for Traumatic Brain Injury (TBI) and Post Traumatic Stress Disorder (PTSD) care
- Medical administration space
- Clinical and administrative space for the Warrior Transition Unit to deliver transitional aftercare and associated patient education programs
- Bachelor Enlisted Quarters to accommodate the projected increase in permanent party enlisted medical and support staff as well as provide transitional lodging required to support aftercare patients receiving treatment on an extended basis
- A fitness center for staff as well as the rehabilitation of patients
- Parking for the additional patients, staff, and visitors
- Two Fisher Houses™ that would support short-term lodging and a home-like reintegration experience for the service members and their family member/care taker while they participate in education and treatment programs in the ICE. Fisher Houses™ are "comfort homes" donated to DoD and Veterans' Administration installations to address short-term lodging needs of patients and their families in hospital or requiring extended aftercare treatment.

To implement the Proposed Action, the Navy has identified two action alternatives that differ in their siting of the required facilities within the installation and in their use of new construction versus renovation of existing buildings to obtain some of the needed administrative space.

Under both action alternatives, the proposed action would provide at NNMC approximately 1,622,000 square feet (SF) or 150,684 square meters (m²) of building construction and renovation, as

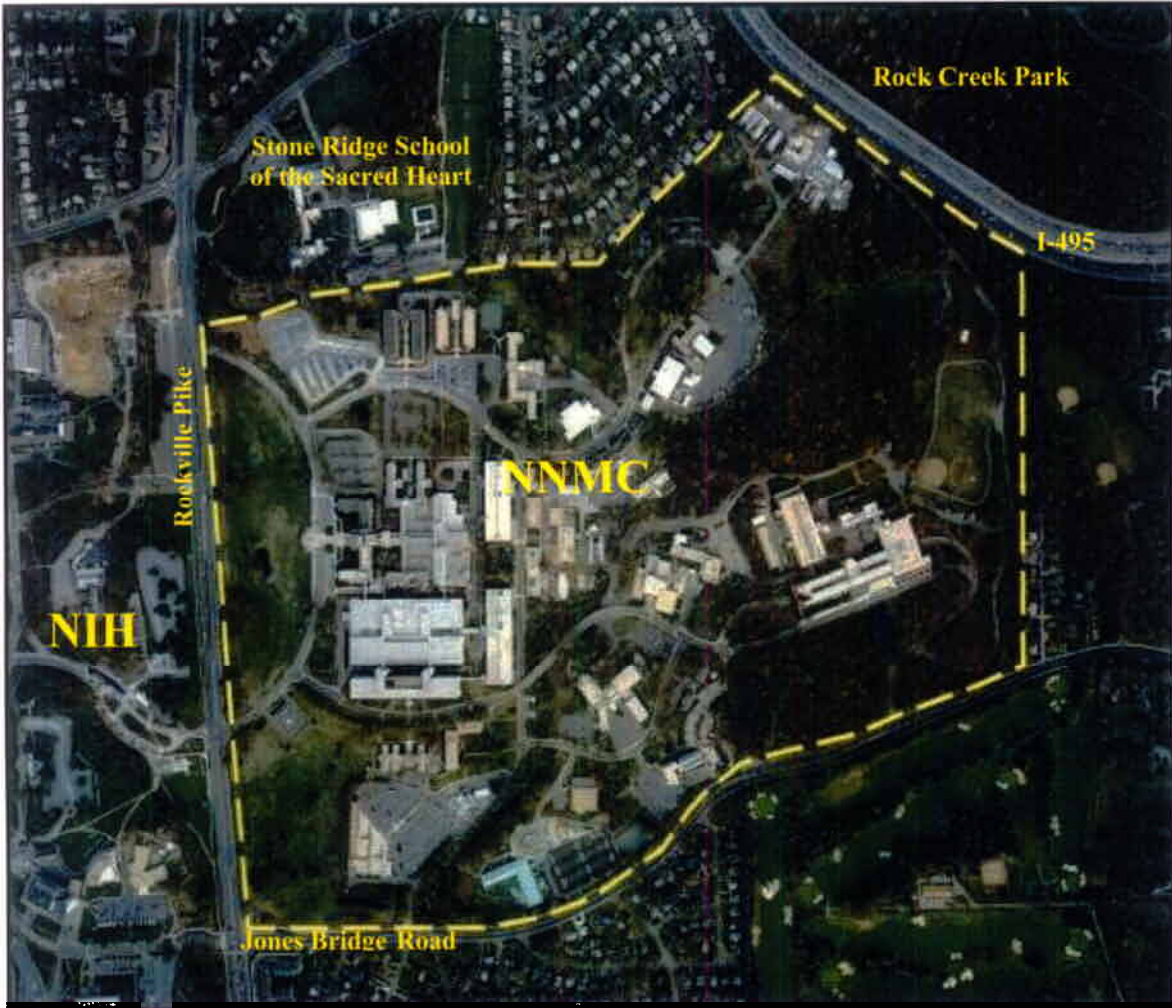
well as approximately 824,000 SF (76,552 m²) of parking facilities. An additional 484,600 patients and visitors are expected each year at NNMC and the EIS assumes approximately 2,500 additional employees.

The alternatives being evaluated in the EIS are:

- Alternative One is the Navy's Preferred Alternative. It would add to NNMC approximately 1,144,000 square feet (SF) or 106,000 square meters (m²) of building construction, provide approximately 508,000 SF (47,193 m²) of renovation to existing building space, provide approximately 824,000 SF (76,552 m²) of new parking facilities, and accommodate approximately 2,500 additional staff. The new construction or improvements to existing facilities would provide medical care and administration additions and alterations, a TBI/PTSD ICE facility, permanent and temporary lodging facilities (BEQs and Fisher Houses™), a new physical fitness center, additional parking, and road and utility improvements on the installation as needed to support the new facilities. Enclosure 3 in this document shows proposed facility sites under Alternative One, Preferred Alternative.
- Under Alternative Two, the same facilities as under Alternative One, Preferred Alternative are proposed. However, the location and the choice of new construction versus renovation of some facilities would differ from Alternative One, Preferred Alternative. Alternative Two would add to NNMC approximately 1,230,000 SF (114,271 m²) of new building construction, provide approximately 423,000 SF (39,298 m²) of renovation to existing building space, and provide approximately 824,000 SF (76,552 m²) of new parking facilities. The number of staff and patients would be the same as under Alternative One, Preferred Alternative. Enclosure 4 in this document identifies the location of the proposed facilities.

The third alternative is the No Action Alternative, which is required by statute and will evaluate the impacts at NNMC in the event that additional growth from BRAC actions does not occur. NNMC would continue to maintain and repair facilities in response to requirements from Congressional action or revisions to building codes. Implementation of the No Action Alternative would require the Congress to change the existing BRAC Law.

NNMC and Vicinity



Alternative One, Preferred Alternative

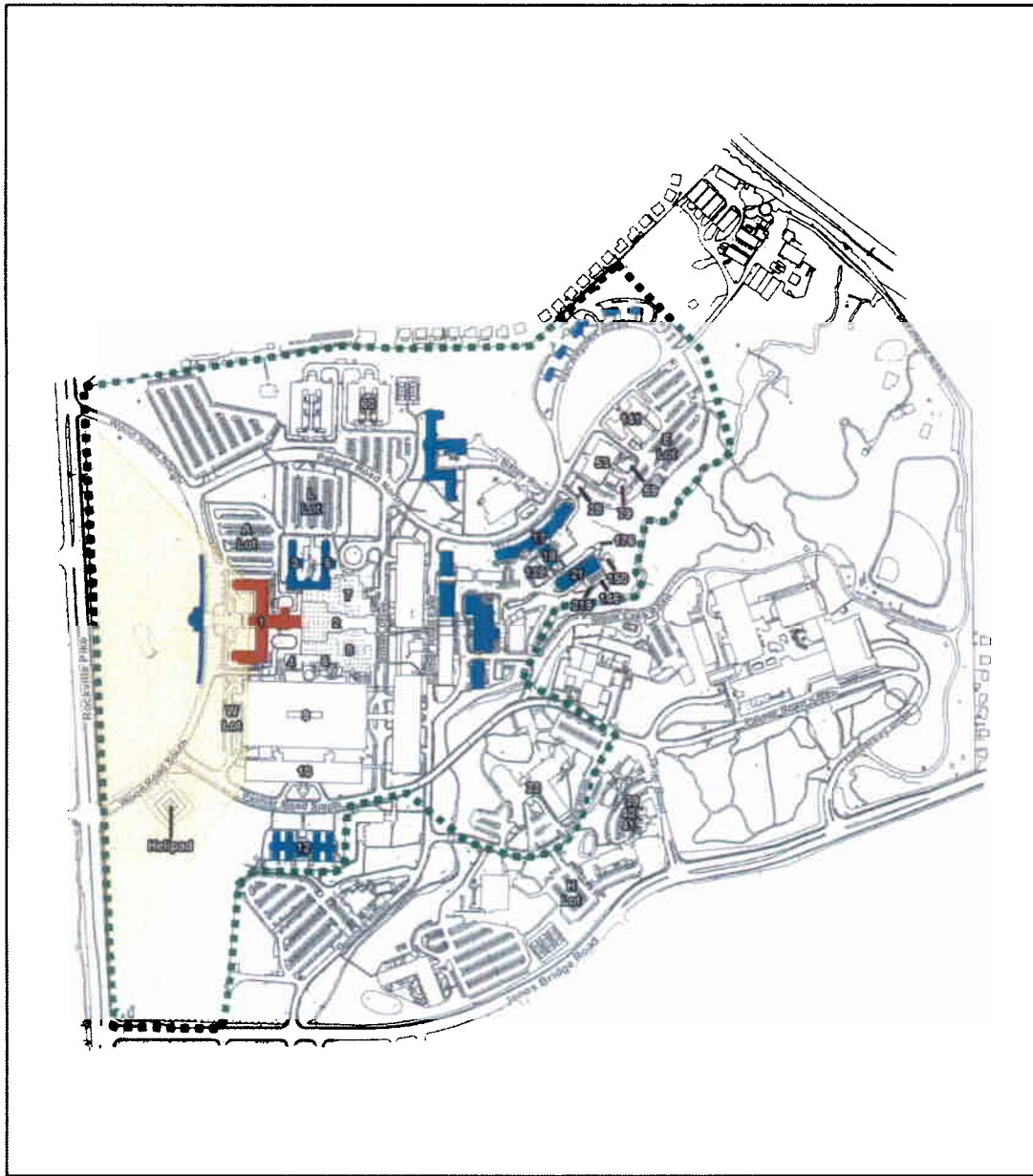


| | | | |
|--|---|---|---|
| <p>Legend</p> <p>Action</p> <ul style="list-style-type: none">  New Construction  Building Demolition  Renovation  NNMC Boundary | <p>NNMC EIS</p> <p>Proposed Actions for Alternative One, Preferred Alternative</p>  |   <p>Sources: NNMC 2005, ESRI 2008, USDA 2008 Coordinate System: NAD 1983 UTM Zone 18N Prepared By: The Low Design Group 2007</p> | <p>MAP INDEX</p>  |
|--|---|---|---|

Alternative Two





NNMC Historic District



Legend


- Eligible NRHP District Boundary
- NRHP Listed Site
- NRHP Eligible Site
- Tower Block Viewshed

**NNMC EIS
National Register Sites**

Sources: NNMC 2003, ESRI 2006
Coordinate System: NAD 1983 UTM Zone 18N
Prepared By: The Louis Berger Group 2007

MAP INDEX





DEPARTMENT OF THE NAVY
NATIONAL NAVAL MEDICAL CENTER
BETHESDA, MARYLAND 20889-5609

IN REPLY REFER TO:

5900
SER 504C/3287
NOV 27 2007

Ms. Lori Byrne
Maryland Department of Natural Resources
Tawes State Office Building
580 Taylor Avenue
Annapolis, MD 21401

Subject: **MARYLAND STATE APPLICATION IDENTIFIER 20061212-1240,**
ENVIRONMENTAL IMPACT STATEMENT FOR ACTIVITIES TO IMPLEMENT THE 2005
BRAC ACTIONS AT NATIONAL NAVAL MEDICAL CENTER, BETHESDA, MARYLAND

Dear Ms. Byrne:

The Department of the Navy is preparing an Environmental Impact Statement (EIS) to examine the potential environmental impacts of the relocation of Walter Reed Army Medical Center (WRAMC) activities from the District of Columbia to the National Naval Medical Center (NNMC) in Bethesda, Maryland per Public Law 101-510, the Defense Base Closure and Realignment Act of 1990 (BRAC Law) as amended in 2005. The specific BRAC recommendation is to:

"Realign Walter Reed Army Medical Center, Washington, DC, as follows: relocate all tertiary (sub-specialty and complex care) medical services to National Naval Medical Center, Bethesda, MD, establishing it as the Walter Reed National Military Medical Center Bethesda, MD; relocate Legal Medicine to the new Walter Reed National Military Medical Center Bethesda, MD; relocate sufficient personnel to the new Walter Reed National Military Medical Center Bethesda, MD, to establish a Program Management Office that will coordinate pathology results, contract administration, and quality assurance and control of Department of Defense (DoD) second opinion consults worldwide; relocate all non-tertiary (primary and specialty) patient care functions to a new community hospital at Fort Belvoir, VA."

The Navy's Proposed Action is to provide necessary facilities to implement BRAC 2005 actions at NNMC. The alternatives being evaluated in the EIS are:

1. **Alternative One, Preferred Alternative:** Under Alternative One, Preferred Alternative, the Navy proposes to add to NNMC approximately 1,144,000 square feet (SF) or 106,000 square meters (m²) of building construction, provide approximately 508,000 SF (47,193 m²) of building renovation to existing space, provide approximately 824,000 SF (76,552 m²) of new parking facilities, and accommodate approximately 2,500 additional staff. The new construction or improvements to existing facilities would provide medical care and

administration additions and alterations, a Traumatic Brain Injury/Post Traumatic Stress Disorder Intrepid Center of Excellence facility, permanent and temporary lodging facilities (Bachelor Enlisted Quarters and Fisher Houses™) a new physical fitness center, additional parking, and road and utility improvements on the Installation as needed to support the new facilities.

2. Alternative Two: Under Alternative Two, the Navy proposes facilities for the same requirements as for Alternative One, Preferred Alternative. However, the location and choice of new construction versus renovation of some facilities would differ from Alternative One, Preferred Alternative. Alternative Two would add to NNMC approximately 1,230,000 SF (114,271 m²) of new building construction, approximately 423,000 SF (39,298 m²) of building renovation, and provide approximately 824,000 SF (76,552 m²) of new parking facilities. The number of staff and patients would be the same as under Alternative One, Preferred Alternative.

3. No Action Alternative: This alternative is required by statute and evaluates the impacts at NNMC in the event that additional growth from BRAC actions does not occur. Implementation of the No Action Alternative would require the Congress to change the existing BRAC law.

All the proposed projects under either Alternative One or Two would convert lands with either existing development or landscaped areas into developed facilities and associated landscape vegetation.

Note that the action alternatives have changed from the ones presented in the Notice of Intent published in the 21 November 2006 Federal Register, which included an option to evaluate non-BRAC actions in addition to the BRAC Actions. The Department of Defense has subsequently decided to concentrate entirely on implementation of the BRAC mandate through Warrior Care in this EIS. Non-BRAC related future growth, support activities, or changes to the installation are not addressed as an alternative within this EIS.

The EIS is prepared pursuant to section (102)(2)(c) of the National Environmental Policy Act (NEPA) of 1969, the regulations implemented by the Council on Environmental Quality (CEQ) (40 CFR Parts 1500 - 1508), OPNAVINST 5090.1B CH-4 the Navy's Environmental and Natural Resources Program Manual, and the Supplemental Environmental Planning Policy, 23 September 2004.

The purpose of this correspondence is to determine if there are any local species of concern that may be affected by this proposed project and to solicit your input or concerns related to these species. Studies conducted have not identified any endangered or

threatened species and no state-rare species present on the installation other than transitory migrating species. We have three planted specimens of the state-rare species Mossy Cup Oak or Bur Oak (*Quercus macrocarpa*) on the installation. We would appreciate information from your office regarding that state-rare species and presence or absence of any other local species of concern in the installation. A project area map that shows the installation location is attached as well as maps showing the two action alternatives (Enclosures 1, 2, 3).

An information request is also being sent to U.S. Fish and Wildlife Service.

If you have any questions or require additional information, please contact either Sam Brandt at (301) 295-2527 or Laura Broussard (301) 295-2528. Thank you in advance for your assistance.

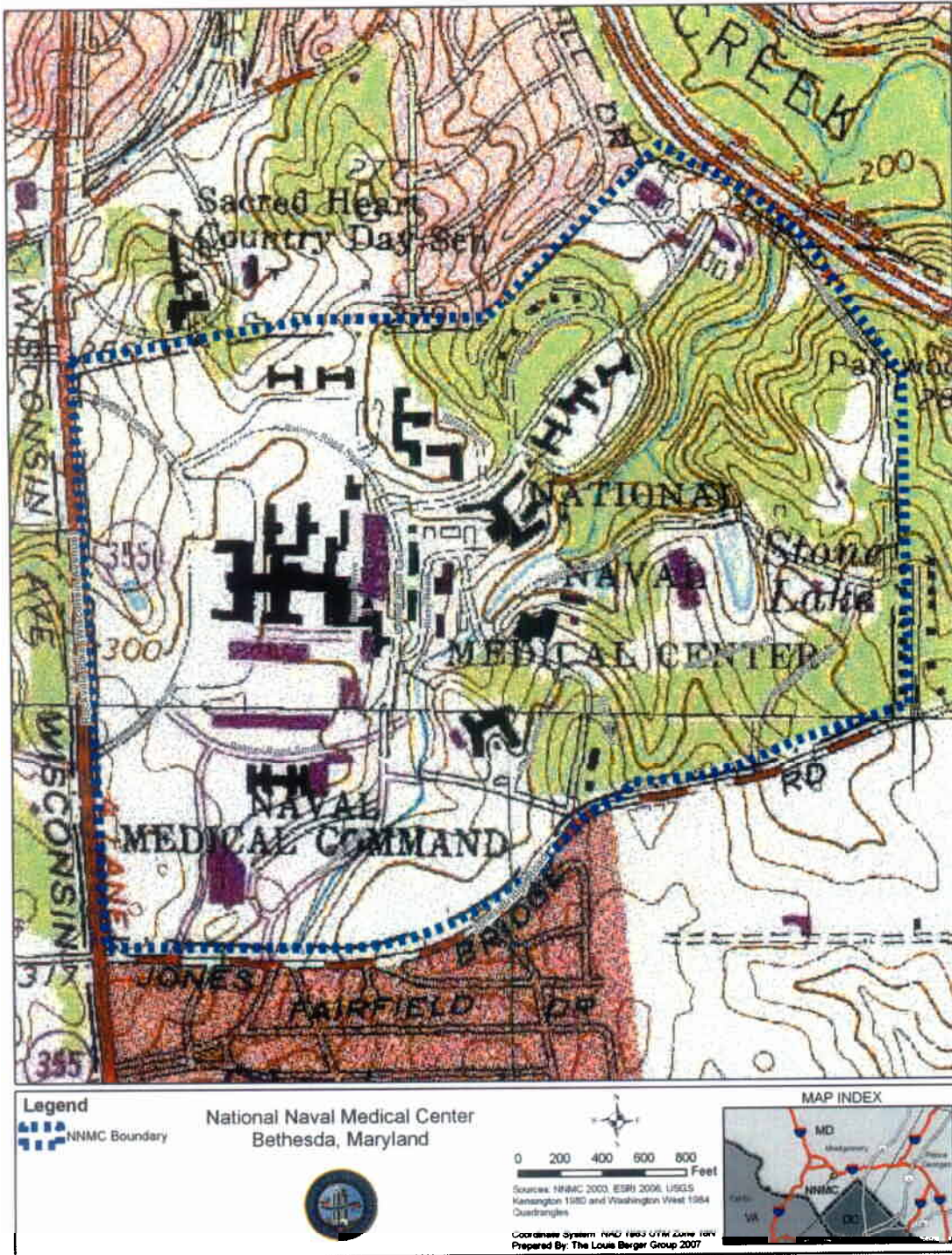
Sincerely,



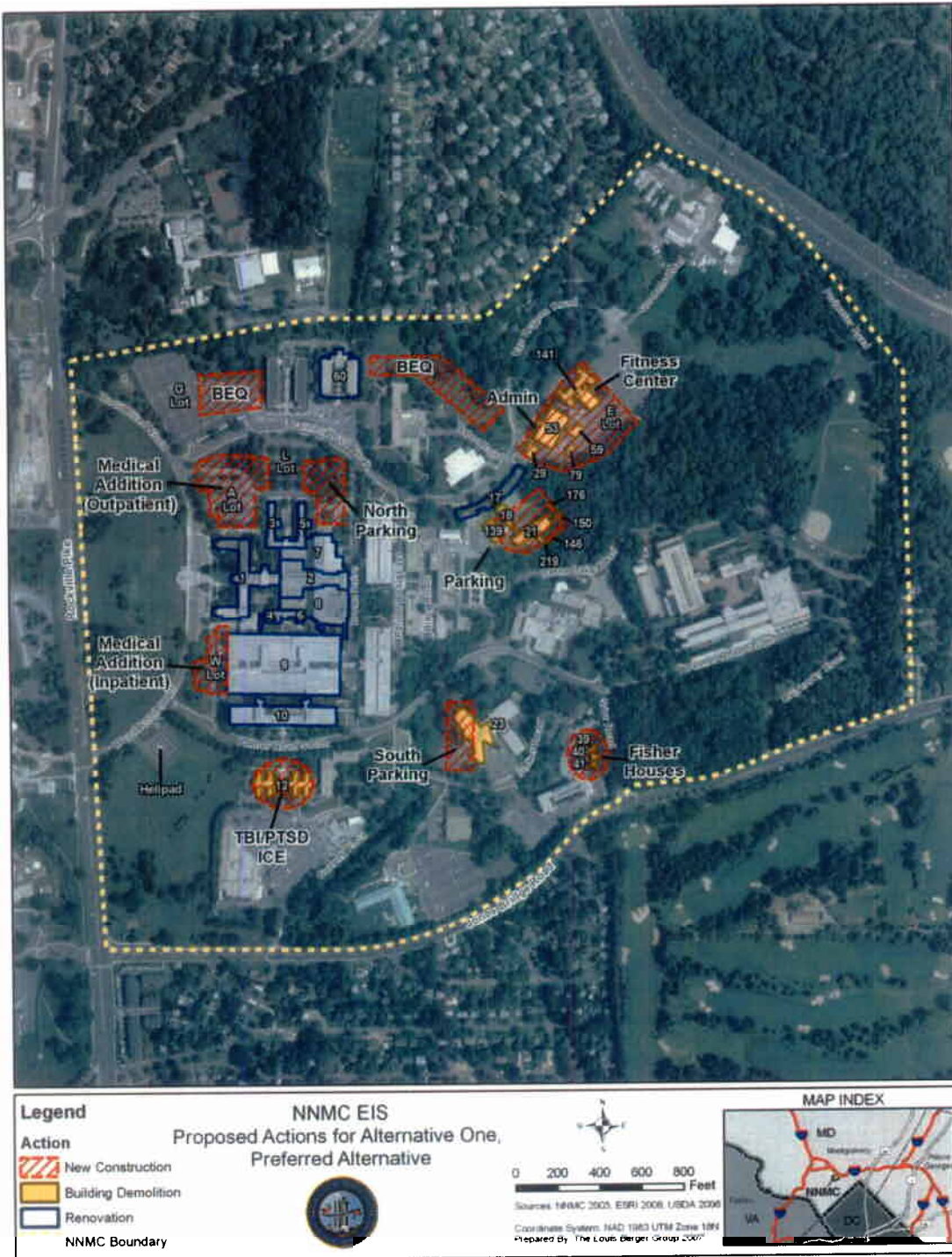
J. A. ZULICK
Commander, CEC, U.S. Navy
Head, Facilities Management Department
By direction of the Commander

Enclosures: 1. Location of NNMC
2. Alternative One, Preferred Alternative
3. Alternative Two

Location of NNMC



Alternative One, Preferred Alternative



Alternative Two





DEPARTMENT OF THE NAVY

NATIONAL NAVAL MEDICAL CENTER
BETHESDA, MARYLAND 20889-5600

IN REPLY REFER TO

5900

Ser 504C/3291

NOV 29 2007

Mr. Daniel Wheeland, P.E.
Director, Office of Research Facilities
National Institutes of Health
9000 Rockville Pike
Building 13, Room 201
Bethesda, MD 20892

Dear Mr. Wheeland:

SUBJECT: ENVIRONMENTAL IMPACT STATEMENT FOR ACTIVITIES TO
IMPLEMENT THE 2005 BASE REALIGNMENT AND CLOSURE (BRAC)
ACTIONS AT NATIONAL NAVAL MEDICAL CENTER (NNMC),
BETHESDA, MARYLAND

The Navy appreciates the National Institutes of Health (NIH) correspondence of January 4, 2007, provided during scoping, regarding the proposed expansion of the National Naval Medical Center (NNMC) by the Defense Base Closure and Realignment Act of 1990, as amended in 2005. As you highlighted, NNMC and NIH have many commonalities, including our shared location in Bethesda.

As you are aware, the Department of the Navy is preparing an Environmental Impact Statement (EIS) to examine the potential environmental impacts of the relocation of Walter Reed Army Medical Center (WRAMC) activities from the District of Columbia to NNMC.

The Navy's Proposed Action is to provide necessary facilities to implement BRAC 2005 actions at NNMC. This Proposed Action is changed from the one presented in the Notice of Intent published in the November 21, 2006 Federal Register, which included evaluation of some non-BRAC actions in addition to the BRAC actions. The Department of Defense has subsequently decided to concentrate entirely on implementation of the BRAC-directed actions and Warrior Care in this EIS.

We believe that the issues expressed in your January 4, 2007 letter are answered by the analysis presented in the Draft EIS, which will be distributed for your review as well as public review in mid-December. However, we would like to take this opportunity to address your issues here as well.

5900

Ser 504C/

NOV 29 2007 3291

The following responses correspond to the list in your letter:

1. NNMC has evaluated potential traffic impact from the Proposed Action. The evaluation includes coordinating with the Maryland State Highway Administration (MSHA) and Montgomery County to evaluate traffic according to their requirements. Potential improvements have been identified to address vehicular impacts from the Proposed Action and additional measures to improve pedestrian and bicycle traffic. Implementation of these improvements would be under the jurisdiction of either Montgomery County or the State of Maryland.
2. NNMC has committed to coordination with Washington Metropolitan Area Transit Authority (WMATA) to allow for a possible metro elevator exit as well as the potential pedestrian bridge or tunnel between NNMC and NIH, as well as to the Metro Station at the northeastern corner of Maryland Route 355 (Rockville Pike) and Jones Bridge Road. These projects would not be paid for with DoD funds; however, the projects would be mission-enhancing and are highly desired for reasons of homeland security, for the safety of base personnel, and for public safety. The projects would require easements and changes to fencing and security at NNMC and would involve close cooperation with local and state agencies as well as with NIH and the Department of Homeland Security (DHS).
3. As a part of the project, the Navy team has coordinated traffic analysis with the Transportation Advisory Commission (TAC), composed of affected state and local agencies and organizations. These include the Maryland Department of Transportation (MDOT), MSHA, Montgomery County, Montgomery County Department of Public Works, WMATA, and Maryland-National Capital Park and Planning Commission. The Navy is considering the TAC suggestion that the Navy (NNMC) bring on board a Transportation Demand Management (TDM) coordinator to implement elements of the TDM before the BRAC action is completed.
4. As stated above in Response #3, the Navy is considering TAC suggestion of contracting a TDM coordinator for NNMC.
5. Currently, the helicopter traffic at NNMC averages approximately twelve flights per month. The relocation of WRAMC

to NNMC would result in the addition of one to two flights per month and therefore, would not result in a significant increase over the current number of flights.

6. Infrastructure upgrades for sidewalks along Route 355 to increase pedestrian safety have been identified in the EIS.

7. As stated previously, NNMC is committed to coordination with WMATA to allow for a possible Metro elevator exit as well as the potential pedestrian bridge between NNMC and NIH as well as to the metro station at the northeastern corner of Maryland Route 355 (Rockville Pike) and Jones Bridge Road. The Navy has welcomed the participation of NIH contractors during TAC meetings.

8. Per results of the EIS analysis of the impacts on utilities, no serious issues are anticipated; however, as designs are finalized, utility studies will be necessary to verify the adequacy of existing infrastructure or to identify necessary improvements. Implementation of controls necessary to comply with state stormwater requirements during both construction and operation of these facilities would ensure that any impacts from the increased stormwater runoff would not be significant.

9. All the proposed projects under Alternative One, the Preferred Alternative, or Alternative Two would convert lands with either existing development or landscaped areas into developed facilities and associated landscape vegetation.

The Navy welcomes NIH's interest in the project and appreciates the NIH offer to become a cooperating agency on the EIS. NIH personnel work at NNMC, which attests to the ongoing collaboration and coordination between the two facilities. However, the Navy does not believe that NIH would best serve this EIS process as a cooperating agency and respectfully declines the offer. The Navy believes the requirements of the current Proposed Action, which relocates military medical facilities to NNMC from WRAMC to provide Warrior Care, requires expertise and coordination that is primarily found within the Navy and Army. The requirement to construct or renovate NNMC's facilities to provide Warrior Care by 2011, as directed by BRAC law, has required streamlined and expedited planning within the Department of Defense and between the Navy and Army.

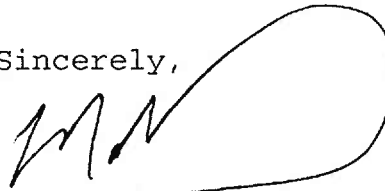
5900
Ser 504C/3291
NOV-29 2007

In this process, the Navy believes that NIH, which does not have a direct influence on the decision making nor provides medical expertise not present within the military services, should be a valued stakeholder rather than a cooperating agency. The Army also declined to be a cooperating agency, believing the responsibility for the expedited actions for this EIS should be with the Navy.

The Navy believes that continuing and expanding our existing extensive intimate working relationships is the best way to find a mutual solution to common problems. To this end, the Navy will publish the Draft EIS in December and welcomes NIH's expertise for review and comment on the EIS during the public review period.

If you have any questions or require additional information, please contact Mr. David Oliveria, BRAC Program Manager (301) 319-4344 or david.oliveria@med.navy.mil. Thank you in advance for your assistance.

Sincerely,



M. P. MALANOSKI
Captain, Medical Corps
U.S. Navy
Deputy Commander

Attachment 2: List of Commenters

List of Commenters: NNMC BRAC EIS-Scoping Meetings and Public Information Meetings

| ID Number | First Name | Last Name | Organization | Comment Category |
|------------------|-------------------|-------------------|---|--|
| 1 | Lucy | Wilson | Avenel Community Association | Whether the scope of project could impact the community |
| 2 | Amy | Royden-Bloom | Individual | Traffic/Pollution |
| 3 | Richard | Blumstein | Western Montgomery County Citizen's Advisory Board Transportation Committee | Traffic/Construction |
| 4 | Vera | White Harris | Individual | Request for inclusion on the mailing list |
| 5 | Debbie | Michaels | Glenbrook Village Home Owners Association | Community Impact/Traffic/Noise |
| 6 | Pete | Kennedy | Locust Hill Estates | Traffic/Location Qualms/Demographics of Military Personnel |
| 7 | Stephanie | Yanovitz | Maryland State Highway Administration - District 3 Traffic | Traffic and Pedestrian Issues/Pre-Build Visualization |
| 8 | Joe | Davies | Individual | Traffic |
| 9 | Rena | Godfrey | Locust Hill Estates | Traffic |
| 10 | Richard | Hoye | Office of Councilmember Duchy Trachtenberg | Access to 12/19/06 Open House powerpoint presentation |
| 11 | W. C. | Chen | Individual | Traffic/Construction/Noise |
| 12 | Tim | Stelzig | Individual | Request for inclusion on the mailing list |
| 13 | Malcolm | Rivkin | Individual | Article for "Meeting Records" |
| 14 | Phil | Alperson | Office of Congressman Chris Van Hollen | Request for inclusion on the mailing list |
| 15 | Ellen | Paul | Individual | Traffic concerns |
| 16 | Karen and Rick | Metchis and Piltz | Individual | Traffic/Pedestrian concerns |
| 17 | Howard | Youth | Individual | Traffic/Community concerns/Environmental concerns |
| 18 | Leslie and Mike | Weber | Individual | Traffic/Congestion/Pedestrian Safety |
| 19 | Susan | Stein | Individual | Congestion/Traffic |
| 20 | Sharon | Andrulot | Individual | Environment/Community/Property Value |
| 21 | Ellen | Liberman | Individual | Traffic/Metro/Community |
| 22 | Warren | Bernard | Individual | Traffic |
| 23 | Audrey | Fanjoy | Individual | Traffic/General Safety |

List of Commenters: NNMC BRAC EIS-Scoping Meetings and Public Information Meetings

| ID Number | First Name | Last Name | Organization | Comment Category |
|------------------|--------------------|------------------|--|---|
| 24 | Austin | O'Connor | Individual | Traffic/Construction/Noise |
| 25 | Richard | Barbieri | Stone Ridge School of the Sacred Heart | Traffic/Noise/Air Quality |
| 26 | Darrell | Lemke | Individual | Traffic/Changing Traffic Patterns |
| 27 | Baraba | Carey | Individual | Traffic/Environment |
| 28 | Lemuel B. | Thomas | Individual | Traffic/Metro/Community |
| 29 | Lorraine | Driscoll | Huntington Terrace Citizens' Association | Traffic/Pedestrian concerns/Metro Access |
| 30 | Tim | Stelzig | Individual | Traffic/Coordination with community/Construction impact |
| 31 | George | Oberlander | Individual | Environment |
| 32 | Lisa | Vogt | Individual | Construction/Traffic/Neighborhood |
| 33 | Maria | Green Cowles | Individual | Traffic/Pedestrian safety |
| 34 | Andrew | Forsyth | Individual | Traffic/Pedestrian issues/Overall community issues |
| 35 | Elizabeth | Jenkins | Individual | Traffic |
| 36 | William | White | Individual | Traffic/Increase in visitor flow |
| 37 | Ilaya | Hopkins | Individual | Traffic |
| 38 | John | Knab | Individual | Neighborhood/Traffic |
| 39 | Judith | McGuire | Individual | Traffic |
| 40 | Ted | Winstead | Individual | Traffic |
| 41 | Llana | Knab | Individual | Traffic |
| 42 | Patricia | Friedman | Individual | Traffic/congestion |
| 43 | Marilyn and George | Mazuzan | Individual | Traffic/Pollution |
| 44 | Eden | Segal | Individual | Traffic/Community concerns |
| 45 | Grace | Palladino | Individual | Traffic |
| 46 | Sandy | | Individual | Traffic |
| 47 | Stephen | Baldwin | Individual | Traffic/Public transportation |
| 48 | Jamie | Yepez | Individual | Pedestrian Bridge and Metro |
| 49 | Nadine | Kim | Individual | Traffic |
| 50 | Jon | Alterman | Parkview Community Association | Switching Traffic Patterns |

List of Commenters: NNMC BRAC EIS-Scoping Meetings and Public Information Meetings

| ID Number | First Name | Last Name | Organization | Comment Category |
|------------------|-------------------|---------------------|--|--|
| 51 | Amanda | Phillips Manheim | Individual | Traffic/Congestion/Pollution |
| 52 | Audrey | Georges | Individual | Accessibility to hospital |
| 53 | Kathryn | Bender | Individual | Traffic/Exhaust/Traffic tunnel or Pedestrian bridge for Wisconsin Avenue crossing |
| 54 | Kathryn | Floyd | Individual | Traffic/Lack of off-site improvement information in the NOI/Impacts to air quality, residential property, biological resources/homeland security/emergency vehicle access |
| 56 | Robert | Lipman | Individual | Traffic/Public transportation |
| 57 | Karen | Dietrich | Individual | Traffic |
| 58 | Michael | Campbell | Individual | Neighborhood and Traffic |
| 59 | Amy | Berrington | Individual | Neighborhood and Traffic |
| 60 | Anne | Fernandez | Individual | Request for inclusion on the mailing list |
| 61 | Vicki | Seed | Individual | Traffic |
| 63 | Tom | Progar | Individual | Traffic |
| 64 | Isiah | Leggett | Montgomery County Executive | Continued Communication/Traffic concerns/Public Transit/Direct Connection to I-495/Expansion of Traffic Study Scope/Tunnel or grade separation at Wisconsin Avenue/Coordination with NIH on off-site transportation options/Parking for construction workers/Lighting and noise impacts on community |
| 65 | Joane D. | Mueller | State Clearinghouse Coordinator, Maryland Department of Environment | MDE-Project consistent with its plans, programs, and objectives |
| 66 | Daniel | Wheeland | Director, Office of Research Facilities, National Institutes of Health | Traffic increase in peak hours/Transit usage/Transportation Demand Management/Increase in helicopter flights/Increase in demand on local utilities/Impervious surface increase/Coordination with NIH/Request to be a cooperating agency for the EIS |
| 67 | Tim | Stelzig | Individual | Information Flow/Communication/Traffic/Pedestrian concerns/Construction concerns |

List of Commenters: NNMC BRAC EIS-Scoping Meetings and Public Information Meetings

| ID Number | First Name | Last Name | Organization | Comment Category |
|------------------|--------------------|------------------|---|---|
| 68 | Kira | Lueders | Parkwood Residents Association | Traffic/Communication concerns |
| 69 | Allen | Myers | Maplewood Citizens Association, Inc. | Traffic concerns |
| 70 | Howard | Iams | Individual | Traffic concerns |
| 71 | Kristen | Hohman | Locust Hill Citizens Association | Traffic concerns/Pedestrian concerns |
| 72 | Marilyn and George | Mazuzan | Individual | Traffic/Pollution |
| 73 | Jodi and Josh | Barr | Individual | Traffic/Congestion/Pollution |
| 74 | Peter | Kennedy | Individual | Traffic concerns |
| 75 | Peter | Stogis | Individual | Research facility inquiry |
| 76 | Sandra | Spadoni | Individual | Traffic/Congestion/Pollution |
| 77 | Miebeth | Janssens | Individual | Traffic/Noise/Congestion/Pollution |
| 78 | Lois | Nienaber | Individual | Traffic/Noise/Congestion/Pollution |
| 79 | Austin | O'Connor | Individual | Traffic/Noise/Congestion/Pollution |
| 80 | Linda | Janey | Director, Maryland State Clearinghouse for Intergovernmental Assistance | Acknowledgement of the notice to prepare an EIS/MD Intergovernmental Review and Coordination/State Application Identifier |
| 81 | Linda | Janey | Director, Maryland State Clearinghouse for Intergovernmental Assistance | MHT-Consistency contingent upon the Section 106 consultation/MDOT-Project generally consistent with its plans, programs and objectives/MDNR and MDP-Project consistent with its plans, progams, and objectives. |
| 82 | Dave | Dabney | Individual | Traffic/Storm care management/Pedestrian concerns |
| 83 | Richard | Barbieri | Stone Ridge School of the Sacred Heart | Construction and traffic impacts on Stone Ridge School |
| 84 | Anonymous | | Individual | Traffic |
| 85 | Patrick | Spalm | Individual | Traffics/Pedestrian concerns/Metro access/Environmental concerns |
| 86 | Eleanor M. | Rice | Individual | Transportation/Traffic concerns |
| 87 | Patricia | Belling | Individual | Work with the Smithsonian to incorporate military museums under the institute umbrella |

List of Commenters: NNMC BRAC EIS-Scoping Meetings and Public Information Meetings

| ID Number | First Name | Last Name | Organization | Comment Category |
|------------------|-------------------|------------------|--|--|
| 88 | Anonymous | | Individual | Traffic |
| 89 | Delegate Bill | Bronrott | Maryland General Assembly | Traffic/Pedestrian concerns/Safety/Noise/Air quality/Water resource/Hazardous waste/Transit usage |
| 90 | Anonymous | | Individual | Pedestrian bridge |
| 91 | Susan | Spring | Individual | Traffic/Aircraft |
| 92 | Liz | Donaldson | Individual | Traffic/Air Pollution/Aircraft traffic/Noise |
| 93 | Renate | Baumer | Individual | Retiree benefits/Traffic |
| 94 | Jim | Kirkland | Individual | High real-estate prices/Increased patients |
| 95 | Kathy | Bender | Individual | Traffic/Environmental concerns/Need for innovative engineers |
| 96 | Gail | Becker | Individual | Increase bus service |
| 97 | Judy | Daniel | Maryland National Capital Park and Planning Commission | Traffic mitigation/New housing/Alternative modes of transit |
| 98 | George | Oberlander | Huntington Terrace Citizens' Association | Traffic increases/Appeal for community input/Effects of development/Museum effects |
| 99 | Debrah | Michaels | Huntington Parkway Citizens Association | Congestion/Timing of traffic study/Noise pollution/Stormwater facility concerns |
| 100 | John | Alterman | Parkview Citizens Association | Traffic/Lack of interaction/Homeowner concerns/Pedestrian traffic/Helicopter traffic |
| 101 | Mal | Rivkim | Battery Park Citizen Association | BRAC Law without impact statement |
| 102 | Delegate Bill | Bronrott | Maryland General Assembly | Traffic concerns/Pedestrian safety/Air quality/Noise/Disposal of hazardous waste/Funding concerns/Housing concerns/Transit system concerns |
| 103 | Dan | Fox | East Bethesda Citizen Association | Reorientation of Campus/Purple Metro Line/Relocation of Walter Reed Museum |
| 104 | Eleanore | Rice | Resident, Locust Hills | Purple Metro Line |
| 105 | Holly | Elwood | Resident, Glenbrook Village | Montgomery County Update |

List of Commenters: NNMC BRAC EIS-Scoping Meetings and Public Information Meetings

| ID Number | First Name | Last Name | Organization | Comment Category |
|------------------|-------------------|------------------|---|--|
| 106 | Peggy | Schwartz | Director, Transportation Action Partnership | Neighborhood Traffic and Parking concerns/Importance of the Metro/Support for Pedestrian Tunnel or Bridge |
| 107 | Mal | Rivkim | Individual | Documents including pages from Bethesda 1990 CBD Sector Plan and Mr. Rivkim's Gazette Article regarding BRAC |
| 108 | George | Oberlander | Huntington Terrace Citizens' Association | Request Concerning Scoping Comments |
| 109 | Andrew | Forsyth | Individual | Traffic Congestion and It's Impact |
| 110 | Victoria | Hall | Resident, Glenbrook Village | Traffic |
| 111 | Ralph | Schofer | Maplewood Citizens Association, Inc. | Traffic |
| 112 | Robert | Lipman | Individual | Traffic |
| 113 | Captain Paul | Seder | Individual | Infrastructure overcapacity/Timing of the project |
| 114 | Howard | Youth | Individual | Traffic/Information flow/Environmental issues |
| 115 | Bradford | Booth | Individual | Traffic/Parking/Noise |
| 116 | Nadim | Ahmed | Individual | Glenbrook Parkway/Traffic |
| 117 | John | Neave | Individual | Traffic/Housing/Environmental issues |
| 118 | Donna | Kane | Individual | Traffic/Metro riders |
| 119 | Jonas | White | Market Intelligence Associate | WRAMC initiative |
| 120 | Ellis | Turner | Individual | Traffic |
| 121 | Lila | Asher | Individual | Traffic/Size of Campus |

List of Commenters: NNMC BRAC EIS-Scoping Meetings and Public Information Meetings

| ID Number | First Name | Last Name | Organization | Comment Category |
|------------------|-------------------|------------------|--|--|
| 122 | Lisa | Cordell | Individual | Traffic |
| 123 | Peter | Galvin | Individual | Traffic/Parking/Pedestrian issues |
| 124 | Kathleen | Holmay | Individual | Traffic |
| 125 | Ethel | Klavan | Individual | Traffic |
| 126 | Chris | Bruch | Individual | Traffic |
| 127 | Mike | Hannan | Individual | Neighborhood traffic |
| 128 | Edward | Kelty | Individual | Traffic/Decision to merge facilities |
| 129 | Elizabeth | Spencer | Individual | Traffic/Safety |
| 130 | John | Kraus | Individual | Purple and Red Metro lines |
| 131 | Richard | Barbieri | Stone Ridge School of the Sacred Heart | Traffic/Noise pollution/Air pollution/Stormwater runoff/Security |
| 132 | Dianne | Bloom | Individual | Traffic/Patient Access |
| 133 | Howard | Kaplan | Individual | Aircraft Traffic/Air Pollution/Sewage/Housing/Environmental Issues/Traffic |
| 134 | Nancy | Holland | Individual | Traffic/Transportation Options/Green Space/Buildings/Property Value |
| 135 | Mindy | Garfinkel | Individual | Traffic |
| 136 | Theodore | Goldstock | Individual | Traffic |
| 137 | Mindy | Garfinkel | Individual | Traffic |
| 138 | Tami | Mark | Individual | Traffic/Neighborhood concerns |

List of Commenters: NNMC BRAC EIS-Scoping Meetings and Public Information Meetings

| ID Number | First Name | Last Name | Organization | Comment Category |
|------------------|--------------------|------------------|--|---|
| 139 | Anonymous | | Individual | Parking/Neighborhood concerns/Noise |
| 140 | Richard | Lashley | The Palisades Apartments | Environmental Issues |
| 141 | Robert and Frances | Lawrence | Individual | Environmental Issues |
| 142 | Sheldon | Lipson | Individual | Environmental Issues |
| 143 | The Smiths | | Individual | Funding/Communication |
| 144 | Patricia | Baptiste | Individual | Environmental Issues |
| 145 | Laurens | van der Tak | Oakmont Citizens Committee | Traffic/Transportation/Noise/Pollution |
| 146 | David | Cooney | Individual | Transportation/BRAC law |
| 147 | Anonymous | | Individual | Impacts of traffic on Navy's ability to hire quality personnel/On quality of life in the area |
| 148 | Gary | Repp | Individual | Improve infrastucture to handle the increase in traffic |
| 149 | Gail | Becker | Individual | Air pollution/Traffic congestion/Road maintenance/Pedestrian safety/Bus and shuttle service |
| 150 | Jill | Mckay | Individual | Traffic/Pedestrian safety |
| 151 | Del. Bill | Bronrott | Individual | Transportation infrastructure/Traffic/Pedestrians/Green space |
| 152 | Nathaniel | Milton | Individual | Pedestrian safety |
| 153 | Lee | Schroeder | Individual | Traffic congestion |
| 155 | Richard | Hoye | Office of Montgomery County Councilmember Duchy Trachtenberg | Build a transit oriented military facility |

List of Commenters: NNMC BRAC EIS-Scoping Meetings and Public Information Meetings

| ID Number | First Name | Last Name | Organization | Comment Category |
|-----------|--------------|-----------|--------------|--|
| 156 | Will | Blacklow | Individual | Traffic congestion |
| 157 | Nancy | Holland | Individual | Pedestrian safety/Environmental issues |
| 158 | Sheldon | Lipson | Individual | Environmental issues |
| 159 | LCDR Michael | Tiller | Individual | Traffic/Low impact commuter |
| 160 | Charles | Lucey | Individual | Traffic/Cost of living/Decentralize hospitals from congested areas |

Note: Comments from public officials and agencies are highlighted.

[This page intentionally left blank.]

**Attachment 3: List of Attendees at the Public
Scoping and Public Information Meetings**

[This page intentionally left blank.]

Public Scoping Meeting Attendees

| Number | First Name | Last Name | Organization |
|--|-------------------|------------------|--|
| Public Scoping Open House on 12/12/2006 7-9pm | | | |
| 1 | J Franklin | Groff | Falkswood Apartment Condominium |
| 2 | Amany | El Difrawy | Falkswood Apartment Condominium |
| 3 | Sarah | Holstine | Office of United States Congressman Chris Van Hollen |
| 4 | Dave | Boss | |
| 5 | Stephanie | Yanovitz | Maryland State Highway Administration - District 3 |
| 6 | A. | Noe | |
| 7 | Dave | Dabney | The Bethesda Urban Partnership |
| 8 | Giwanne M. | Italiano | Greater Bethesda - Chevy Chase Chamber |
| 9 | Chris | Williams | The Gazette |
| 10 | Jon | Alterman | Parkview Citizens Association |
| 11 | Dennis | Coleman | National Institutes of Health |
| 12 | David | Contois | Navy Red Cross |
| 13 | Peter | Stocs | |
| 14 | Rochelle | Follender | |
| 15 | Anita | Centofanti | |
| 16 | Mary Lou | Doneski | |
| 17 | Gretchun | Brewer | |
| 18 | Ron | Wilson | National Institutes of Health, Division of Facilities Planning |
| 19 | Eugene | Thomas | |
| 20 | Rebecca | Lord | Office of Montgomery County Councilmember Roger Berliner |
| 21 | Sue | Knapp | Western Montgomery County Citizen Advisory Board |
| 22 | Ki H. | Kim | Maryland National Capital Park and Planning Commission |
| 23 | Richard | Barbieri | Stone Ridge School of the Sacred Heart |
| 24 | Lisa | Rother | Montgomery County Government |
| 25 | Paul | Lobo | The Washington Group |
| 26 | Herbert | Stone | |
| 27 | Leslie | Hamm | Center |
| 28 | Barb | Cooper | Montgomery County Workforce Services |
| 29 | David | Wade | National Capital Area Multi Service Market Office |
| 30 | Eleonor | Rice | Locust Hill Citizens Association |
| 31 | Patrick | Spahn | |
| 32 | Peter | Kennedy | |

Public Scoping Meeting Attendees

| Number | First Name | Last Name | Organization |
|--|-------------------|------------------|--|
| 33 | Steve | Vogel | The Washington Post |
| 34 | Winnie | Feldman Lindauer | |
| 35 | Ilaya | Hopkins | East Bethesda Citizens Association |
| 36 | Barbara | Reinike | |
| 37 | Lorraine | Driscoll | Huntington Terrace Citizens' Association |
| 38 | Stephen | Adams | National Naval Medical Center |
| 39 | Malcolm | Rivkin | Rivkin Associates |
| 39 | | | |
| Public Scoping Open House on 12/19/2006 6:30-10pm | | | |
| 1 | Tim | Wittig | SAIC |
| 2 | David | Wade | National Capital Area Multi Service Market Office |
| 3 | Ellen | Lambert | Marriott Executive Stay |
| 4 | Richard | Hoye | Office of Montgomery County Coucilmember Duchy Trachtenberg |
| 5 | Marc | Elrich | Montgomery County Council |
| 6 | Mike | Hayes | State of Maryland |
| 7 | James | Burke | Bureau of Medicine and Surgery, United States Navy |
| 8 | Peggy | Schwartz | North Bethesda Transportation Center |
| 9 | Deborah | Snead | Montgomery County Government Bethesda-Chevy Chase Regional Services Center |
| 10 | Anne | Delp | Walter Reed Army Medical Center |
| 11 | Randy | Treiber | Walter Reed Army Medical Center |
| 12 | Cathy | Bokman | Marriott Executive Stay |
| 13 | Ruwan | Salgado | Gables on Tuckerman |
| 14 | Bill | Bronrott | Maryland General Assembly |
| 15 | Holly | Elwood | |
| 16 | Kristen | Hohman | Locust Hill Citizen Association |
| 17 | Tom | Peeling | United States Navy Base Realignment and Closure Project Manangement Office |
| 18 | Tom | Mahulek | |
| 19 | Patricia | Belling | |
| 20 | John | Murray | National Naval Medical Center |

Public Scoping Meeting Attendees

| Number | First Name | Last Name | Organization |
|--|-------------------|------------------|---|
| 21 | Kathleen | Pierce | Office of Integration, National Naval Medical Center |
| 22 | Judy | Daniel | |
| 23 | Michael | Pun Gan | United States Navy |
| 24 | George H.F. | Oberlander | Huntington Parkway Citizen Association |
| 25 | Barb | Cooper | Montgomery County WF Services |
| 26 | Deborah | Michaels | Glenbrook Village Home Owners Association |
| 27 | Jay | Blumenwantz | |
| 28 | Steve | Henske | Uniformed Services University of the Health Sciences |
| 29 | Rick and Wer | Schieke | |
| 30 | Dan | Fox | East Bethesda Citizens Association |
| 31 | Eleonor | Rice | Locust Hill Citizens Association |
| 32 | Sarah | Holstine | Offices of Congressman Chris Van Hollen and County Council Member Marc Elrich |
| 33 | John | Alterman | Parkview Citizens Association |
| 34 | Malcolm | Rivkin | Rivkin Associates |
| 34 | | | |
| | | | |
| Public Scoping Open House on 12/21/2006 1-4pm | | | |
| 1 | W | Wallert | Potomac Falls Home Association |
| 2 | Ellyn | Goldkind | National Capital Planning Commission |
| 3 | Ron | Spalding | Maryland Department of Transportation |
| 4 | Stephen | Baldwin | Western Montgomery County Citizens Advisory Board |
| 5 | David Scott | Smith | |
| 6 | Veronica | Robinson | WTOP |
| 7 | Gerald and F | Baumer | |
| 8 | Eric | Dickson | Waste Water Management |
| 9 | Susan | Spring | Whitehall Condominium |
| 10 | George | Milne | Stone Ridge School of the Sacred Heart |
| 11 | Wendy | Burdine | National Institute for the Severely Handicapped |
| 12 | Liz | Donaldson | |
| 13 | Jessica | Damon | National Naval Medical Center contractor |
| 14 | Allan | Glass | |

Public Scoping Meeting Attendees

| Number | First Name | Last Name | Organization |
|--|--|------------------|---|
| 15 | Tom | Fitzpatrick | United States Army |
| 16 | Jerry | Vignon | United States Army |
| 17 | Sarah | Miller | Montgomery County Department of Economic Development |
| 18 | David | Moss | Montgomery County Department of Public Works and Transportation |
| 19 | Virginia A. | Miller | Wyndate Citizens Association; Co-Chairperson National Institutes of |
| 20 | Anonymous | | |
| 20 | | | |
| Public Scoping Open House on 12/21/2006 7-9pm | | | |
| 1 | Jim | Kirkland | |
| 2 | David | Wade | National Capital Area Multi Service Market Office |
| 3 | Kathryn | Bender | East Bethesda Citizen Association |
| 4 | Joan | Kleinman | Office of United States Congressman Chris Van Hollen |
| 5 | Lorraine | Driscoll | Huntington Terrace Citizens' Association |
| 6 | John | Neave | Locust Hill Association |
| 7 | Sandra | Brecher | Montgomery County Commuter Services |
| 8 | Marles K. | Haurahan | |
| 9 | Pam | Wingfield | |
| 10 | B. | Flint | Office of Integration, National Naval Medical Center |
| 11 | William P. | Hanrahan, Jr. | |
| 12 | Ghassem S. | Mobin | IMD Inc. |
| 13 | Richard | Blumstein | Western Montgomery County Citizens Advisory Board |
| 14 | Dale | Tibbitts | Office of Montgomery County Councilmember Marc Elrich |
| 14 | | | |
| 107 | Total number of attendees for all four Public Scoping Open Houses | | |

Public Information Meeting Attendees

| Number | First Name | Last Name | Organization |
|---|----------------|------------|--|
| Public Information Meeting on 01/30/2007 7-9pm | | | |
| 1 | Richard E. | Lashley | The Palisades Apartments |
| 2 | W. | Blacklow | Office of Delegate William Bronrott, Maryland General Assembly |
| 3 | Peter | Kennedy | |
| 4 | Carmen Gastilo | Machuja | |
| 5 | Leslie | Hamm | Montgomery County Government Bethesda-Chevy Chase Regional Services Center |
| 6 | Rebecca | Lord | Office of Montgomery County Councilmember Roger Berliner |
| 7 | Patrick | O'Neil | Bethesda-Chevy Chase Chamber |
| 8 | Dianne | Seffert | |
| 9 | Joan D. | Kleinman | Office of United States Congressman Chris Van Hollen |
| 10 | David | Bates | Stone Ridge School of the Sacred Heart |
| 11 | George | Milne | Stone Ridge School of the Sacred Heart |
| 12 | Ryan | Hunter | WUSA - TV 9 |
| 13 | Nancy | Holland | |
| 14 | Jill | McKay | |
| 15 | Liz | Vitchock | |
| 16 | Sheldon R. | Lipson | |
| 17 | David | Cooney, MD | |
| 18 | Adam | Hochman | |
| 19 | Patricia Aiken | O'Neill | Stone Ridge School of the Sacred Heart |
| 20 | Nat | Milton | United States Navy |
| 21 | Frances V. | Lawrence | |
| 22 | Robert J. | Lawrence | |
| 23 | Gerald | Hodges | |
| 24 | A. J. | New | |
| 25 | William | Bronrott | Delegate, Maryland General Assembly |
| 26 | Adda | Millon | |
| 27 | Marian | Bradford | Camelot Mews Home Owners Association |
| 28 | Ken | Reichard | Office of United States Senator Ben Cardin |
| 29 | Lee | Schroeder | |
| 30 | Richard | Hoye | Office of Montgomery County Councilmember Duchy Trachtenberg |
| 31 | Gail | Becker | |

Public Information Meeting Attendees

| Number | First Name | Last Name | Organization |
|---|---|------------|--|
| 32 | Jenny | Dunner | Citizens Coordinating Committee for Friendship Heights |
| 33 | Patricia | Baptiste | Citizens Coordinating Committee for Friendship Heights |
| 34 | William | White | |
| 35 | Sue | Tabach | Office of United States Senator Barbara Mikulski |
| 35 | | | |
| Public Information Meeting on 02/01/2007 7-9pm | | | |
| 1 | Michael | Cubano | National Naval Medical Center |
| 2 | Ann-Marie | Regan | National Naval Medical Center |
| 3 | Moses | Otuyelu | |
| 4 | Jeff | Kidwell | |
| 5 | Gary | Repp | |
| 6 | David | Cooney, MD | |
| 7 | Ken | Reichard | Office of United States Senator Ben Cardin |
| 8 | Jane | Yafee | |
| 9 | Carol | Crout | Resident Northwest of National Naval Medical Center |
| 10 | Mindy Richman | Garfinkel | |
| 11 | David | Smith | |
| 12 | Corinne R. | Haslett | |
| 13 | Steve | Philpott | |
| 14 | Audrey | Dutton | The Gazette |
| 15 | Win | Blacklow | Office of Delegate William Bronrott, Maryland General Assembly |
| 16 | Jeff | McCoy | |
| 17 | Gail | Becker | |
| 18 | Ed | Krauze | |
| 19 | Deborah | Snead | Montgomery County Government Bethesda-Chevy Chase Regional Services Center |
| 19 | | | |
| 54 | Total number of attendees for both Public Information Meetings | | |

**Attachment 4: Federal Register Notice of Intent,
the Public Notice, and the U.S. Congress Notice**

in New London, CT, was not properly announced in the local newspaper, and the Navy will hold another meeting as follows: Wednesday, November 29, 2006, 5 p.m.–8 p.m., Radisson Hotel New London, 35 Governor Winthrop Boulevard, New London, CT. Written public comments submitted during the November 2, 2006, meeting are a part of the record and do not need to be resubmitted.

SUPPLEMENTARY INFORMATION: The scoping meeting will consist of an informal, open house session with information stations staffed by DON representatives. Additional information concerning the meetings will be available on the EIS/OEIS Web page located at: <http://AFASTEIS.GCSAIC.COM>.

Dated: November 14, 2006.

M. A. Harvison,

Lieutenant Commander, Judge Advocate General's Corps, U.S. Navy, Federal Register Liaison Officer.

[FR Doc. E6-19636 Filed 11-20-06; 8:45 am]

BILLING CODE 3810-FF-P

DEPARTMENT OF DEFENSE

Department of the Navy

Notice of Intent To Prepare an Environmental Impact Statement (EIS) for Implementation of the 2005 Base Realignment and Closure (BRAC) Decision To Relocate Walter Reed Army Medical Center (WRAMC) Activities from Washington, DC to the National Naval Medical Center (NNMC) in Bethesda, MD and To Announce Public Scoping Meetings

AGENCY: Department of the Navy, DoD.

ACTION: Notice.

SUMMARY: Pursuant to Section (102)(2)(C) of the National Environmental Policy Act (NEPA) of 1969, the regulations implemented by the Council on Environmental Quality (40 CFR parts 1500–1508), and the Department of the Navy NEPA regulation (32 CFR part 775), the Department of the Navy (DON) announces its intent to prepare an EIS to evaluate the potential environmental impacts associated with relocation of certain WRAMC activities from Washington, DC, to the NNMC in Bethesda, MD per Public Law 101–510, the Defense Base Closure and Realignment Act of 1990 (BRAC Law). Potential impacts associated with normal future growth expected from changes in mission, force protection, improved security, and accessibility for disabled persons will also be evaluated

and will contribute to the alternatives considered.

The DON will hold public scoping meetings for the purpose of further identifying the scope of issues to be addressed in the EIS. Written and recorded comments will be accepted during this time. To ensure that the full range of issues related to this proposed action will be addressed, representatives from NNMC Bethesda will be available to answer questions and solicit public comments from interested parties during the scheduled public scoping meetings. Following publication of the draft EIS, at a time to be determined, further public meetings will be held to address comments on the draft document.

DATES: The DON will conduct public scoping meetings in Bethesda, Montgomery County, MD, to receive oral and/or written comments. The public meetings will be conducted in English. Both comment sheets and a recorder will be made available to document individual comments received at the public scoping meetings scheduled below:

1. *Open House:* Tuesday, December 12, 2006, 7 p.m.–9 p.m., Bethesda Marriott, 5151 Pooks Hill Road, Bethesda, MD.
2. *Open House:* Tuesday, December 19, 2006, 6:30 p.m.–10 p.m., Bethesda Marriott, 5151 Pooks Hill Road, Bethesda, MD. Open house will begin at 6:30 p.m. followed by a brief Navy presentation at 7:30 p.m.
3. *Open House:* Thursday, December 21, 2006, 1 p.m.–4 p.m., Bethesda Marriott, 5151 Pooks Hill Road, Bethesda, MD.
4. *Open House:* Thursday, December 21, 2006, 7 p.m.–9 p.m., Bethesda Marriott, 5151 Pooks Hill Road, Bethesda, MD.

FOR FURTHER INFORMATION CONTACT: Officer in Charge—BRAC, NNMC, 8901 Wisconsin Avenue, Bethesda, MD 20889, telephone 301–295–2722, fax 301–474–5419, e-mail: NNMCEIS@bethesda.med.navy.mil.

SUPPLEMENTARY INFORMATION: The Defense BRAC Commission was established by Public Law 101–510, the BRAC Law, to recommend military installations for realignment and closure. Recommendations of the 2005 BRAC Commission were included in a report presented to the President on September 8, 2005. The President approved and forwarded this report to Congress on September 16, 2005, which became effective as public law on November 9, 2005, and must be implemented in accordance with the requirements of the BRAC Law.

The BRAC Law exempts the decision-making process of the Commission from the provisions of NEPA. The Law also relieves the DoD from the NEPA requirement to consider the need for closing, realigning, or transferring functions, and from looking at alternative installations to close or realign. The DON is preparing environmental impact analyses during the process of relocating functions from military installations being closed or realigned to other military installations after the receiving installations have been selected, but before functions are relocated. The analyses will consider direct and indirect environmental and socioeconomic effects of these actions and cumulative impacts of other reasonably foreseeable actions affecting receiving installations.

The BRAC recommendations for realignment of WRAMC, Washington, DC, are as follows: Relocate all tertiary (sub-specialty and complex care) medical services to NNMC, Bethesda, MD, establishing it as the Walter Reed National Military Medical Center Bethesda, MD; relocate Legal Medicine to the new Walter Reed National Military Medical Center Bethesda, MD; relocate sufficient personnel to the new Walter Reed National Military Medical Center Bethesda, MD, to establish a Program Management Office that will coordinate pathology results, contract administration and quality assurance, and control of DoD second opinion consults worldwide; relocate all non-tertiary (primary and specialty) patient care functions to a new community hospital at Ft. Belvoir, VA.

NNMC Bethesda is a Navy-owned 243-acre military health care, medical education, and research installation located in Bethesda, MD. The National Institutes of Health main campus is directly west of NNMC. Other neighbors surrounding NNMC include Stone Ridge School of the Sacred Heart, residential housing, North Chevy Chase Recreation Center, Rock Creek Park, and the Columbia Country Club. Interstate 495 is adjacent to the northeastern corner of NNMC.

The proposed action for this EIS is to accommodate the BRAC 2005 law. The BRAC-directed action includes various mission relocations from WRAMC which result in movement of medical, educational, and support services to NNMC. The BRAC-directed action must be completed on or before September 15, 2011. Upon completion of the merger, the existing WRAMC will close and the new premier medical center will be renamed the Walter Reed National Military Medical Center at Bethesda.

The EIS will consider the possible combinations of locations on base that are reasonable to accomplish the proposed action: The adaptive reuse of existing facilities through renovation, with emphasis on preservation of the historic context and integrity of existing buildings; the use of new construction; the potential long-term growth in installation missions; and identification of cost-effective and timely means of meeting mission requirements, the BRAC deadline, and other deadlines. These factors are currently under evaluation by an Installation Master Plan effort, which will cover a 10-year planning period that extends to the year 2016. The Master Plan and the EIS are subject to a formal review process under the authority of the National Capitol Planning Commission (NCPC). The Master Plan will include a separate document, referenced in the EIS, to comply with NCPC traffic management analysis requirements.

Alternatives were developed to assess the proposed action and potential additional development that may occur at NNMC. Alternatives to be considered include: (1) Implement the BRAC recommendation; (2) implement the BRAC recommendation and provide for future anticipated growth, support activities, and changes to the installation; and (3) no action, with NNMC continuing to maintain and repair existing facilities without additional growth.

Alternative 1 will meet the requirements of the BRAC Law by providing additions and alterations to NNMC such as additional parking and alterations to administrative and physical training facilities to accommodate functions and activities relocating from WRAMC. Road and utility improvements would be included. Additional facilities and infrastructure needed to re-establish the relocating mission and allow the installation to function are provided in this alternative. These include temporary and permanent lodging facilities, and improvements to access gates to accommodate added traffic volume and meet current Anti-terrorism/Force Protection standards. It is anticipated that completion of this action will result in NNMC facility additions and alterations totaling approximately 1,100,000 square feet, additional appropriate parking facilities totaling about 900,000 square feet, the addition of approximately 1,400 full-time staff members, and about 435,000 additional patients and visitors using the facilities per year.

Alternative 2 includes all items considered under Alternative 1 and

adds anticipated future growth of other missions performed at the installation. This will include expansion of DoD medical education and research facilities, improved or replacement athletic facilities, a potential pedestrian bridge across Wisconsin Avenue, security enhancements, and added retail space. It is anticipated that Alternative 2 would result in the following increases over those described in Alternative 1: Facility additions and alterations totaling approximately 650,000 square feet; additional appropriate parking facilities totaling approximately 130,000 square feet; the addition of approximately 1,100 full-time staff members; and about 100,000 additional patients and visitors using the facilities per year.

Alternative 3 is required by statute and will evaluate the impacts at NNMC in the event that additional growth from BRAC and non-BRAC action does not occur. NNMC would continue to maintain and repair facilities in response to requirements from Congressional action or revisions to building codes. Implementation of Alternative 3 would require the Congress to change the existing BRAC Law.

The EIS will address potential direct, indirect, short-term, long term, and cumulative impacts to the human and natural environment, to include potential impacts to topography, geology, and soils, water resources, biological resources, air quality, noise, infrastructure and utilities, traffic, cultural resources, land use, socioeconomic, environmental justice, and hazardous waste and materials. Known areas of concern associated with the BRAC action include providing required space and facilities at NNMC in consideration of historic characteristics, and impacts to local traffic and on-base parking associated with increases in personnel and patient visits.

The DON is initiating the scoping process to identify community concerns and issues that should be addressed in the EIS. Agencies and the public are encouraged to provide written comments in addition to, or in lieu of, oral comments at scheduled public scoping meetings. Comments should clearly describe specific issues or topics that the EIS should address. Written comments must be postmarked or e-mailed by midnight January 04, 2007, and should be sent to: Officer in Charge—BRAC, NNMC, 8901 Wisconsin Avenue, Bethesda, MD 20889, telephone 301-295-2722, fax 301-474-5419, e-mail: NNMCEIS@bethesda.med.navy.mil. Requests for

inclusion on the EIS mailing list may also be submitted to this address.

Requests for special assistance, sign language interpretation for the hearing impaired, language interpreters, or other auxiliary aids for scheduled public scoping meetings must be sent by mail or e-mail by December 06, 2006, to Ms. Amanda Goebel, The Louis Berger Group, Inc., telephone 202-912-0267, e-mail: agoebel@louisberger.com.

Dated: November 15, 2006.

M.A. Harvison,

Lieutenant Commander, Judge Advocate General's Corps, U.S. Navy, Federal Register Liaison Officer.

[FR Doc. E6-19635 Filed 11-20-06; 8:45 am]

BILLING CODE 3810-FF-P

DEPARTMENT OF EDUCATION

Notice of Proposed Information Collection Requests

AGENCY: Department of Education.

SUMMARY: The IC Clearance Official, Regulatory Information Management Services, Office of Management, invites comments on the proposed information collection requests as required by the Paperwork Reduction Act of 1995.

DATES: Interested persons are invited to submit comments on or before January 22, 2007.

SUPPLEMENTARY INFORMATION: Section 3506 of the Paperwork Reduction Act of 1995 (44 U.S.C. Chapter 35) requires that the Office of Management and Budget (OMB) provide interested Federal agencies and the public an early opportunity to comment on information collection requests. OMB may amend or waive the requirement for public consultation to the extent that public participation in the approval process would defeat the purpose of the information collection, violate State or Federal law, or substantially interfere with any agency's ability to perform its statutory obligations. The IC Clearance Official, Regulatory Information Management Services, Office of Management, publishes that notice containing proposed information collection requests prior to submission of these requests to OMB. Each proposed information collection, grouped by office, contains the following: (1) Type of review requested, e.g. new, revision, extension, existing or reinstatement; (2) Title; (3) Summary of the collection; (4) Description of the need for, and proposed use of, the information; (5) Respondents and frequency of collection; and (6) Reporting and/or Recordkeeping burden. OMB invites public comment.

**NOTICE OF PUBLIC SCOPING OPEN HOUSES
ENVIRONMENTAL IMPACT STATEMENT FOR BRAC ACTIONS AT THE
NATIONAL NAVAL MEDICAL CENTER, BETHESDA, MARYLAND**

The Navy will conduct public scoping open houses in Bethesda, Maryland to further identify the issues to be addressed in developing an Environmental Impact Statement (EIS) under the provisions of the National Environmental Policy Act. The proposed Base Realignment and Closure (BRAC) action at the National Naval Medical Center (NNMC) in Bethesda, Maryland will involve the transfer of tertiary health care services (sub-specialty and complex care) currently provided at Walter Reed Army Medical Center (WRAMC) in Washington, DC to NNMC. The EIS will assess environmental impacts from construction and operations to accommodate increases in health care facilities and personnel at NNMC.

The open houses are scheduled for 12, 19, and 21 December as follows:

1. Open House: Tuesday, December 12, 2006, 7:00 pm - 9:00 pm, Bethesda Marriott, 5151 Pooks Hill Road, Bethesda, MD.
2. Open House: Tuesday, December 19, 2006, 6:30 pm – 10:00 pm, Bethesda Marriott, 5151 Pooks Hill Road, Bethesda, MD. Open house will begin at 6:30 pm followed by a brief Navy presentation at 7:30 pm.
3. Open House: Thursday, December 21, 2006, 1:00 pm - 4:00 pm, Bethesda Marriott, 5151 Pooks Hill Road, Bethesda, MD.
4. Open House: Thursday, December 21, 2006, 7:00 pm - 9:00 pm, Bethesda Marriott, 5151 Pooks Hill Road, Bethesda, MD.

Following publication of the draft EIS in the future, at a time to be determined, the Navy will conduct a second set of public meetings to address comments on the draft document.

Navy representatives will be available to answer questions and solicit public comments orally or in writing from all interested parties during each of the open houses. Agencies and the public are also encouraged to provide written comments in addition to, or in lieu of, comments at the open houses. To be most helpful, comments should clearly describe specific issues or topics that the EIS should address. Written comments may be submitted without attending the open house and must be postmarked no later than 04 January, 2007. They should be sent to:

Officer in Charge – BRAC
NNMC
8901 Wisconsin Avenue
Bethesda, MD 20889

e-mail: NNMCEIS@bethesda.med.navy.mil
telephone 301-295-2722
fax 301-474-5419

Requests for language interpreters or an interpreter for the hearing impaired, or other special communication needs, should be made to Ms. Amanda Goebel, The Louis Berger Group, Inc., (202) 912-0267, or email agoebel@louisberger.com at least one week prior to the meeting.

FOR FURTHER INFORMATION CONTACT: Officer in Charge – BRAC, NNMC, 8901
Wisconsin Avenue, Bethesda, MD 20889, telephone 301-295-2722, fax 301-474-5419, e-mail:
NNMCEIS@bethesda.med.navy.mil.



Wednesday, January 10, 2007

Contact: Marilyn Campbell, (202) 641-6628

Navy Extends Scoping Period for Public Comments on BRAC-Related Expansion

United States Representative Chris Van Hollen (D-MD), Maryland Delegate William A. Bronrott (District 16, Bethesda) and Montgomery County Councilman Roger Berliner (District 1) today announced the Department of the Navy's decision to extend the public comment period for the proposed expansion of the National Naval Medical Center (NNMC) for 30 days, until February 3, 2007. The public comment period, which is required by the National Environmental Policy Act, will give the public an additional opportunity to share its concerns over the proposed relocation of the Walter Reed Army Medical Center (WRAMC) services onto the NNMC campus.

At the request of the elected officials who represent the neighborhoods surrounding NNMC, the Navy also agreed to use the additional time to host well-publicized public forums to give interested individuals and neighborhood associations greater opportunities to learn about the full scope of this BRAC project and to express their views during this crucial scoping period.

"I am pleased by the Navy's decision to grant additional time to hear the concerns of the community regarding this expansion," said Congressman Van Hollen. "I believe that by working together in good faith, the Navy can address our community concerns while at the same time providing a world-class campus to deliver the finest medical services available for treating our troops."

"I am grateful for this additional opportunity for everyone to learn about and respond to this very extensive Bethesda BRAC project that will surely have enormous impacts on our area," said Delegate Bill Bronrott. "But we also must be assured that an impact study will focus on the entire surrounding community, and not just the National Naval Medical Center campus itself. While BRAC may provide a tremendous opportunity for extraordinary medical and scientific collaborations between the military, NIH and Suburban Hospital, we must be assured that transportation and environmental impacts to the surrounding community do not diminish the quality of our lives."

"I am gratified that the Navy recognizes how important it is for the affected communities to have

every opportunity to share their concerns about this project," said Councilman Roger Berliner.

<http://vanhollen.house.gov/HoR/MD08/Newsroom/Press+Release+by+Date/2007/01-10-07+Navy+Extends+Scoping+Period+for+Public+Comments+on+BRAC-Related+Expansion.htm>

**Attachment 5: List of Community Associations and
Government Entities That Were Mailed the
Notification of the Public Scoping Meetings**

List of Public Agencies that were mailed the Notice of Intent and the Public Scoping Meetings

| Title | FirstName | LastName | Job Description | Organization | Address | Address2 | City | State | ZIP |
|-------|-------------|--------------|-------------------------------------|--|---|--------------------------------|---------------|-------|------------|
| Mr. | John V. | Cogbill, III | Chairman | National Capital Planning Commission | 401 Ninth Street, N.W., Suite 500 | | Washington | DC | 20576 |
| Ms. | Patricia E. | Gallagher | Executive Director | National Capital Planning Commission | 401 Ninth Street, N.W., Suite 500 | | Washington | DC | 20576 |
| Ms. | Stephanie | Sechrist | Community Planner | National Capital Planning Commission | 401 Ninth Street, N.W., Suite 301 | | Washington | DC | 20576 |
| Ms. | Pearl | Young | US EPA Office of Federal Activities | EIS Filing Section | Mail Code 2252-A Room 7241 | 1200 Pennsylvania Avenue, N.W. | Washington | DC | 20460 |
| Ms. | Karen | Del Grosso | Environmental Planning & Assessment | US EPA, Region III 3ES50 | 1650 Arch Street | | Philadelphia | PA | 19103-2029 |
| | | | Maryland State Clearinghouse | Department of State Planning | 301 West Preston Street, Room 1104 | | Baltimore | MD | 21201 |
| Mr. | Matthew | Power | Director | Maryland Office of Planning | 301 W. Preston Street | | Baltimore | MD | 21201-2305 |
| Ms. | Marilyn | Clemens | Planner, Community Planning | Maryland-National Capital Park and Planning Commission | 8787 Georgia Avenue | | Silver Spring | MD | 20910 |
| Ms. | Deborah | Snead | Director | Bethesda-Chevy Chase Regional Services Center | 4805 Edgemoor Lane | | Bethesda | MD | 20814 |
| Mr. | David | Robertson | Executive Director | Metropolitan Washington Council of Governments | 777 North Capital Street, N.E., Suite 300 | | Washington | DC | 20002-4239 |
| Mr. | Royce | Hanson | Chairman | Montgomery County Planning Board | 8787 Georgia Avenue | | Silver Spring | MD | 20910 |
| Ms. | Faroll | Hamer | Acting Director | Montgomery County Planning Department | 8787 Georgia Avenue | | Silver Spring | MD | 20910 |

[This page intentionally left blank.]

List of Elected Officials that were mailed the Notice of Intent and the Public Scoping Meetings

| Title1 | FirstName | LastName | Title2 | Group | Address | City | State | ZIP |
|------------------|------------------|-----------------|----------------|---|--|--------------|--------------|------------|
| Senator | Barbara | Mikulski | Honorable | Brown's Wharf | 1629 Thames Street | Baltimore | MD | 21231 |
| Senator | Paul | Sarbanes | Honorable | Tower 1, Suite 1710 | 100 South Charles Street | Baltimore | MD | 21201 |
| Senator-Elect | Benjamin | Cardin | Honorable | | 600 Windhurst Avenue Suite 230 | Baltimore | MD | 21201 |
| Congressman | Albert R. | Wynn | Honorable | | 18401 Woodfield Road | Gaithersburg | MD | 20879 |
| Congressman | Steny | Hoyer | Honorable | U.S. District Courthouse | 6500 Cherrywood Lane, Suite 310 | Greenbelt | MD | 20770 |
| Congressman | Elijah | Cummings | Honorable | | 1010 Park Avenue, Suite 105 | Baltimore | MD | 21201 |
| Congressman | Christopher | VanHollen | Honorable | | 51 Monroe Street, Suite 507 | Rockville | MD | 20850 |
| Governor | Robert | Ehrlich | Honorable | | 100 State Circle | Annapolis | MD | 21401-1995 |
| Governor – Elect | Martin | O'Malley | Governor-Elect | Gubernatorial Transition Office | William Donald Schaefer Tower 6 St. Paul Street, Suite 2000 | Baltimore | MD | 21202 |
| Senator | Sharon M. | Grosfeld | Honorable | Maryland State Senate | James Senate Office Building, Room 203 | Annapolis | MD | 21401-1991 |
| Senator-Elect | Richard S. | Madaleno, Jr. | Honorable | Lowe House Office Building, Room 223 | 84 College Ave. | Annapolis | MD | 21401-1991 |
| Senator | Brian E. | Frosh | Honorable | Maryland State Senate | Miller Senate Office Building, 2 East Wing | Annapolis | MD | 21401-1991 |
| Delegate | Marilyn R. | Goldwater | Honorable | Maryland House of Delegates | Lowe House Office Building, Room 221 | Annapolis | MD | 21401-1991 |
| Delegate | William A. | Bonrott | Honorable | Maryland House of Delegates | Lowe House Office Building, Room 221C | Annapolis | MD | 21401-1991 |
| Delegate | Susan C. | Lee | Honorable | Maryland House of Delegates | Lowe House Office Building, Room 221 | Annapolis | MD | 21401-1991 |
| Delegate | Jane | Lawton | Honorable | Maryland House of Delegates | Lowe House Office Building, Room 223 | Annapolis | MD | 21401-1991 |
| Delegate-Elect | Jeff | Waldstreicher | Honorable | | 4017 Lawrence Avenue | Kensington | MD | 20895 |
| Delegate | Ana Sol | Gutierrez | Honorable | Maryland House of Delegates | Lowe House Office Building, Room 219 | Annapolis | MD | 21401-1991 |
| County Executive | Isaiah | Leggett | Honorable | | 101 Monroe Street | Rockville | MD | 20850 |
| Councilmember | Howard A. | Denis | Councilmember | Stella B. Werner Office Building | 100 Maryland Avenue | Rockville | MD | 20850 |

List of Elected Officials that were mailed the Notice of Intent and the Public Scoping Meetings

| Title1 | FirstName | LastName | Title2 | Group | Address | City | State | ZIP |
|---------------|------------------|-----------------|---------------------------|-------------------------------------|---------------------|-------------|--------------|------------|
| Councilmember | Roger | Berliner | Councilmember | Stella B. Werner Office Building | 100 Maryland Avenue | Rockville | MD | 20850 |
| Councilmember | Nancy | Floreen | Councilmember | Stella B. Werner Office Building | 100 Maryland Avenue | Rockville | MD | 20850 |
| Councilmember | George | Leventhal | Council President | Stella B. Werner Office Building | 100 Maryland Avenue | Rockville | MD | 20850 |
| Councilmember | Steven | Silverman | Councilmember | Stella B. Werner Office Building | 100 Maryland Avenue | Rockville | MD | 20850 |
| Councilmember | Michael | Subin | Councilmember | Stella B. Werner Office Building | 100 Maryland Avenue | Rockville | MD | 20850 |
| Councilmember | Marc | Elrich | Councilmember | Stella B. Werner Office Building | 100 Maryland Avenue | Rockville | MD | 20850 |
| Councilmember | Duchy | Trachtenberg | Councilmember | Stella B. Werner Office Building | 100 Maryland Avenue | Rockville | MD | 20850 |
| Councilmember | Marilyn | Praisner | Council Vice President | Stella B. Werner Office Building | 100 Maryland Avenue | Rockville | MD | 20850 |

List of Municipalities that were mailed the Notice of Intent and the Public Scoping Meetings

| Title | First Name | Last Name | Title2 | Group | Address | City, State, ZIP |
|--------------|-------------------|------------------|--------------------------|---|-------------------------|-------------------------|
| Mr. | Todd | Hoffman | Town Manager | Town of Chevy Chase | 4301 Willow Lane | Chevy Chase, MD 20815 |
| Ms. | Linna | Barnes | Mayor | Town of Chevy Chase | 4301 Willow Lane | Chevy Chase, MD 20815 |
| Mr. | Geoffrey B. | Biddle | Village Manager | Chevy Chase Village | 5906 Connecticut Avenue | Chevy Chase, MD 20815 |
| Mr. | Douglas B. | Kamerow | Board of Managers Chair | Chevy Chase Village | 5906 Connecticut Avenue | Chevy Chase, MD 20815 |
| Mr. | Andy Leon | Harney | Village Manager | Section 3 of the Village of Chevy Chase | P.O. Box 15281 | Chevy Chase, MD 20815 |
| Mr. | Mike | Shannon | Village Council Chairman | Section 3 of the Village of Chevy Chase | P.O. Box 15281 | Chevy Chase, MD 20815 |
| Ms. | Frances L. | Higgins | Village Manager | Section 5 of the Village of Chevy Chase | P.O. Box 15120 | Chevy Chase, MD 20815 |
| Mr. | Andrew | Smith | Council Chair | Section 5 of the Village of Chevy Chase | P.O. Box 15120 | Chevy Chase, MD 20815 |
| Mr. | Robert | Weesner | Village Manager | Village of North Chevy Chase | P.O. Box 15887 | Chevy Chase, MD 20815 |
| Ms. | Shannon | Dorman | Council Chair | Village of North Chevy Chase | P.O. Box 15887 | Chevy Chase, MD 20815 |
| Mr. | Tom | Carter | Clerk-Treasurer | Town of Somerset | 4510 Cumberland Avenue | Chevy Chase, MD 20815 |
| Mr. | Walter | Behr | Mayor | Town of Somerset | 4510 Cumberland Avenue | Chevy Chase, MD 20815 |
| Mr. | Ted | Pratt | Town Administrator | Town of Garrett Park | P.O. Box 84 | Garrett Park, MD 20896 |
| Ms. | Carolyn | Shawaker | Mayor | Town of Garrett Park | P.O. Box 84 | Garrett Park, MD 20896 |
| Ms. | Bonnie | Baugh | Village Manager | Village of Martin's Additions | P.O. Box 15267 | Chevy Chase, MD 20815 |
| Mr. | Julian | Mansfield | Village Manager | Village of Friendship Heights | 4433 South Park Avenue | Chevy Chase, MD 20815 |
| Ms. | Melanie Rose | White | Mayor | Village of Friendship Heights | 4433 South Park Avenue | Chevy Chase, MD 20815 |
| Mr. | Maurice | Trebach | Council Chairman | Village of Friendship Heights | 4433 South Park Avenue | Chevy Chase, MD 20815 |
| Ms. | Cathie | Polak | Town Manager | Town of Glen Echo | 6106 Harvard Avenue | Glen Echo, MD 20812 |
| Ms. | Debbie | Beers | Mayor | Town of Glen Echo | 6106 Harvard Avenue | Glen Echo, MD 20812 |

[This page intentionally left blank.]

List of Community Organizations that were mailed the Notice of Intent and the Public Scoping Meetings

| Title | Contact Name | Association/Organization |
|--------------|---------------------|------------------------------------|
| Mr. | Wallace Hutchins | 4620 North Park Condo. |
| Ms. | Brenda Holt | Al Marah Neighborhood Assn. |
| Mr. | Augustus Alzona | Alta Vista Gardens/North Bethesda |
| | Contact | Amberfield Homeowners Assn. |
| Mr. | Steve Kudla | Ashleigh Community Assn. |
| Mr. | Marvin Burt | Avenel Community Assn. |
| Ms. | Lucy Wilson | Avenel Community Assn. |
| Mr. | Alan Sterling | Bannockburn Citizens Assn. |
| Mr. | Stuart Brown | Bannockburn Citizens Assn. |
| Mr. | Stanley Sigel | Bannockburn Co-op, Inc. |
| Mr. | John Wetmore | Barrett and Audubon Ad Hoc |
| Mr. | John Murgolo | Battery Lane Tenants |
| Mr. | Steven Teitelbaum | Battery Park Citizens Assn. |
| Ms. | Diana Bruhn | Battery Park Citizens Assn. |
| Mr. | Malcolm Rivkin | Battery Park Citizens Association |
| Ms. | Nancy Bowen | Bells Mill Civic Assn. |
| Ms. | Marilyn Forrest | Bellwood Community Council, Inc. |
| Ms. | Connie Beck | Belvedere Neighbors Assn. |
| Mr. | Marc Meltzer | Bentley Place Condo |
| Mr. | Ray Longerbeam | Bethesda Court Condo |
| Mr. | Stefan Grewe | Bethesda Overlook Homeowners Assn. |
| Mr. | Hirsch Davis | Bethesda Park A Condo. |

List of Community Organizations that were mailed the Notice of Intent and the Public Scoping Meetings

| Title | Contact Name | Association/Organization |
|--------------|---------------------|--|
| Mr. | Jon Alterman | Bethesda Parkview Citizens Assn. |
| Mr. | Henry Jacob | Bethesda Place Community Council, Inc. |
| Mr. | Philip Gallas | Birnam Wood Community Assn. |
| Ms. | Linda Kauskey | Bradley Boulevard Citizens Association |
| Mr. | Nelson Rosenbaum | Bradley Hills Civic Assn. |
| Ms. | Robin DeSilva | Bradley House Condo. Assn. |
| Ms. | Joanna Neal | Bradley Park Homeowners Assn. |
| Mr. | Charles Doran | Brickyard Road Citizens Assn. |
| Mr. | Thomas Carlson | Bristol Square Condominium |
| Mr. | Steven Heyman | Brookside Citizens Assn., Inc. |
| Mr. | George Springston | Burning Tree Civic Assn. |
| Mr. | Peter Beveridge | Byeforde-Rock Creek Highlands |
| Ms. | Sue Polis | Camelot Mews Homeowners Assn. |
| Ms. | Barbara Barracato | Camelot Mews Homeowners Assn. |
| Mr. | Keith Woodard | Carderock Springs South Homeowners Ass |
| Mr. | Alvan Morris | Carleton of Chevy Chase A Condo. |
| Ms. | Sarah Davis | Carmelita Homeowners Assn. |
| Mr. | Kit Pardee | Carroll Knolls and McKenny Hills Civic |
| Ms. | Shireen Ambush | Castle Gate Homeowners Assn. |
| Ms. | Susanna Barber | Chadsberry Homeowners Assn. |
| Ms. | Doreen Winkler | Chelsea Tower Condo. Assn. |
| Mr. | Steven Lanksman | Cherington Condominium |

List of Community Organizations that were mailed the Notice of Intent and the Public Scoping Meetings

| Title | Contact Name | Association/Organization |
|--------------|---------------------|--|
| Mr. | Edward Oh | Cherrington Condominium |
| Mr. | John Steele | Chevy Chase Hills Civic Assn. |
| Ms. | Susan Merryman | Chevy Chase Lake Apts. |
| Ms. | Julia Andrews | Chevy Chase Park Condo. Assn. |
| Mr. | Ken Strickland | Chevy Chase Valley Citizens Assn |
| Ms. | Janet Coe | Chevy Chase View |
| Mr. | Geoffrey Biddle | Chevy Chase Village |
| | City Manager | Chevy Chase Village, Section III |
| Mr. | Bill Lewis | Chevy Chase West Neighborhood Assn. |
| Mr. | Mark Fernandez | Chevy Chase West Neighborhood Assn. |
| Ms. | Sue Anderson | Chevy Chase West Neighborhood Assn. |
| Mr. | Avi Adler | Chevy Chase West Neighborhood Asso. |
| Mr. | Steven Wishnow | Christopher Condominium |
| Mr. | Marty Hutt | Churchhill Community Foundation |
| Mr. | Duane Thompson | Citizens United to Save the Circle |
| | Property Manager | City Commons of Bethesda |
| Mr. | David O'Bryon | City Homes of Edgemoor HOA |
| Mr. | Hank Jacob | City Homes of Edgemoor HOA |
| Mr. | Ronald Tripp | Citz. Cord. Committee on Friendship Hgts |
| Mr. | Jeff Spiegel | Civic Assn. of River Falls |
| Mr. | David Silver | Coldspring Civic Assn. |
| Mr. | Bruce Blumberg | College Square Condos |

List of Community Organizations that were mailed the Notice of Intent and the Public Scoping Meetings

| Title | Contact Name | Association/Organization |
|--------------|---------------------|--------------------------------------|
| Mr. | Fred Thomas, Jr. | Congressional Forest Community Assn. |
| Mr. | Guy Chamberlin | Copenhaver Homes Corporation |
| Mr. | Eric Peek | Coquelin Run Citizens Assn. |
| Mr. | William Ratcliff | Country Place Citizens Assn. |
| Mr. | Louis Pettey | Crestberry Homeowners Assn., Inc. |
| Mr. | Cyril Draffin | Deerfield-Weathered Oak Citizens |
| Ms. | Seena King | Drumaldry Homes Assn. |
| | Contact | Drummond Citizens Assn. |
| Mr. | Lawrence Funt | East Edgemoor Property Owners |
| Mr. | Charlie Fleischer | East Gate II Homes Assn. |
| Mr. | Alan Privot | East Gate III Homeowners Assn., Inc. |
| Ms. | Cheryl Wetter | East Gate III Homes Assn., Inc. |
| Mr. | Shepard Sheinkman | Edgemoor Citizens Association |
| Mr. | Steve Sawicki | Edgewood/Glenwood Citizens Assn. |
| Mr. | John Wolf, Jr. | Edson Lane Citizens Assn. |
| Ms. | Katie Wyrsh | Eight One Zero One (8101) |
| Mr. | John Barpoulis | Eldwick Homes Assn. |
| Ms. | Elizabeth Haven | Elizabeth Condominium Assn., Inc. |
| Mr. | Roger Mitchell | Elm Street-Oakridge-Lynn Civic Assn. |
| Ms. | Lynn Barclay | English Village Assn. |
| Ms. | Marcia Sullivan | English Village Assn. |
| Ms. | Shireen Ambush | Fairhill Condo, Inc. |

List of Community Organizations that were mailed the Notice of Intent and the Public Scoping Meetings

| Title | Contact Name | Association/Organization |
|--------------|---------------------|--|
| Mr. | Henry Jacob | Falls Ridge Homeowners Assn. |
| Ms. | Marianne Cordier | Falls Ridge Homeowners Assn. |
| Dr. | Steven Janowitz | Fallsbend Homeowners Assn. |
| Mr. | John Saveland | Fallsmead Homes Corp. |
| Mr. | Michael Spalletta | Fallsreach and Fallsberry Civic |
| Mr. | Bernie Brill | Fallsreach Homeowners Assn. |
| Ms. | Sarah Fitzpatrick | Fallstone Condominium |
| Mr. | Phil Corn | Fallstone Homeowners Assn. |
| Mr. | Charles Lileikis | Fallswick Homeowners Assn., Inc. |
| Mr. | Robert Fogel | Fallswick Homeowners Assn., Inc. |
| Mr. | David L'Heureux | Fallswood Civic Assn. |
| Mr. | Franklin Groff | Fallswood Condominium Assn. |
| Ms. | Dolores Milmoie | For A Rural Montgomery (F.A.R.M) |
| Ms. | Ann Fink | Forty Seven Twenty CC Drive Condo |
| Ms. | Barbara McCall | Forty Seven Twenty CC Drive Condo |
| Mr. | Joesph Fitzgerald | Forty Sevent Twenty CC Condo Assn. |
| Mr. | Gary Digges | Forum Council of Co-Owners |
| Mr. | Henry Jacob | Fox Chapel North Homes Assn. Inc. |
| Mr. | Steve Goldhill | Fox Den Homeowners Assn. |
| Mr. | Patrick McDonough | Friendship Heights Village Civic Assn. |
| Ms. | Barbara Tauben | Friendship Heights Village Civic Assn. |
| Mr. | Frank Valeo | Friendship Heights Village Council |

List of Community Organizations that were mailed the Notice of Intent and the Public Scoping Meetings

| Title | Contact Name | Association/Organization |
|--------------|---------------------|---------------------------------------|
| Mr. | Julian Mansfield | Friendship Heights Village Council |
| Ms. | Melanie White | Friendship Heights Village Council |
| Dr. | Alfred Muller | Friendship Village Civic Assn. |
| Mr. | Ruwan Salgado | Gables on Tuckerman Condo. Assn. |
| Ms. | Suzanne Hudson | Garrett Park Estates-White Flint |
| Mr. | Ed Reich | Georgetown Village Condominium |
| Mr. | Jacob Philip | Glen Park of Potomac |
| Mr. | Robert Steinwustzel | Glenmore Homeowners Assn. |
| Mr. | Steven Schram | Goldsboro Homeowners Assn. |
| Ms. | Barbara Shea | Grand Bel Manor Condo Sec. III |
| Ms. | Shireen Ambush | Greencastle Manor Condominium #2, Inc |
| Mr. | Hank Jacob | Greenhills Condo I |
| | Property Manager | Greens of Warther |
| Mr. | Stephen Burks | Greenwich Forest Citizens Assn. |
| Ms. | Elizabeth Dane | Grosvenor Park Townhouse Condominiu |
| Mr. | Richard Rose | Grosvenor Homeowners Assn. |
| Mr. | James Meister | Grosvenor Homeowners Association |
| Ms. | Claudia Smith | Grosvenor Mews Condominium Assn. |
| Ms. | Vicki Gomez | Grosvenor Park Condo I |
| Mr. | Dan Robinson | Grosvenor Park Condo. Citizens Assn. |
| Ms. | Harriet Arshawsky | Grosvenor Park Condo. Citizens Assn. |
| Mr. | Musco Barber | Grosvenor Park Homeowners Assn. |

List of Community Organizations that were mailed the Notice of Intent and the Public Scoping Meetings

| Title | Contact Name | Association/Organization |
|--------------|---------------------|--|
| Ms. | Linda Aley | Grosvenor Park III Condo. |
| Mr. | Louis Berlin | Grosvenor Square Homeowners Assn. |
| | Contact | Hadley Farms Community Assn. |
| Ms. | Ann Davis | Hamlet Citizens Assn. of Chevy Chase |
| Ms. | Susanne Mitchell | Hamlet House Condo. |
| Mr. | Alan Ward | Hamlet Place Owners, Inc. |
| Mr. | Wesley Stubbs | Hamlet Place Owners, Inc. |
| Mr. | David Oblon | Heritage Farm Homeowners Assn. |
| Mr. | Bruce Blumberg | Heritage Green Condo., Inc. |
| Mr. | Bob Fogel | Heritage Walk Homes Corporation |
| Mr. | Robert Oshinsky | Heritage Walk Homes Corporation |
| Mr. | Ben White | Highlands Homeowners Assn. |
| Mr. | Tom Whiteman | Hillmead Citizens Assn. |
| Mr. | Larry Friend | Hilltop Estates Civic Assn. |
| Ms. | Shireen Ambush | Homeland Village at Olney Condo. |
| Mr. | David Hill | Hungerford Civic Assn. |
| Mr. | George Oberlander | Huntington Parkway Citizens Assn. |
| Mr. | Jonathan Isaacs | Huntington Parkway Citizens Assn. |
| Ms. | Ann Dorough | Huntington Terrace Citizens Assn. |
| Mr. | Edgar Hanley | Inverness Knolls Assn., Inc. |
| Ms. | Judy Starr | Inverness North Homeowners Assn., Inc. |
| Ms. | Marilyn Plevin | Jefferson Square Homeowners Assn. |

List of Community Organizations that were mailed the Notice of Intent and the Public Scoping Meetings

| Title | Contact Name | Association/Organization |
|--------------|-------------------------|---|
| Mr. | William Wallace | Jones Mill Road Citizens Assn., Inc. |
| | Neil & Cynthia McMullen | Kendale Neighborhood Coalition |
| Ms. | Karen Jackson-Knight | Ken-Gar Civic Assn. |
| Mr. | Wayne Goldstein | Kensington Heights Citizens Assn. |
| Ms. | Donna Savage | Kensington Heights Citizens Assn. |
| Mr. | Bill Jackson | Kensington Ridge Homeowners Assn., Inc. |
| Mr. | Bob McNeil | Kensington Terrace Citizens Group |
| Ms. | Elizabeth Quinn | Kensington View Citizens Assn. |
| Mr. | J. Thomas Nolan | Kensington Woods Homeowners Assn. |
| Mr. | Gary Abramson | Kentsdale Estates Civic Assn. |
| Mr. | Benjamin Porto | Kenwood Court Homes Assn., Inc. |
| | Property Manager | Kenwood Forest Condo. II |
| Mr. | Richard Berney | Kenwood Park Citizens Assn. |
| Mr. | Neil Hazard | Lake Potomac Civic Assn. |
| | President | Lakeside Terrace Condo. |
| Ms. | Kristen Hohman | Locust Hill Citizens Assn. |
| Ms. | Judy Morenoff | Luxmanor Citizens Assn. |
| Mr. | Myers Allen | Maplewood Citizens Assn. |
| Ms. | Sharon Constantine | Maplewood Citizens Assn. |
| Ms. | Dorothy Bloomfield | Maplewood Park Place Community Assn. |
| Ms. | Lyn Brown | Marwood Homeowners Assn. |
| Mr. | Ray Nightingale | Maryknoll Citizens Assn. |

List of Community Organizations that were mailed the Notice of Intent and the Public Scoping Meetings

| Title | Contact Name | Association/Organization |
|--------------|---------------------|---|
| Ms. | Nancy Mudd | Marymount Citizens Assn. |
| Mr. | Gary Rosch | Massachusetts Avenue Forest Assn. |
| | Lisa & Neal Martin | Mazza Wood Homeowners Assn. |
| Mr. | Steve Baldwin | Merrimack Park Citizens Assn. - Sec. II |
| Mr. | Bernard Wortman | Merrimack Park Citizens Assn. Sec 1 |
| Mr. | Tyler Abell | Merry-Go-Round Farm Cluster |
| Mr. | Louis Fireison | Merry-Go-Round Farm Homeowners Assn. |
| Mr. | Bruce Blumberg | Middlebrook Commons Condominium |
| Mr. | Henry Jacob | Montclair Manor Homeowners Assn. |
| Mr. | Bill Breslyn | Montgomery Century Condo. |
| Mr. | Robert Gross | Montgomery Square Citizens Assn. |
| Ms. | Charlotte Joseph | Montrose Civic Assn. |
| Mr. | Colin Furtaw | Montrose Forest Homeowners Assn. |
| Mr. | Steve Goldstein | Montrose Woods Condo. Assn. |
| Ms. | Shireen Ambush | Montrose Woods Condo. Assn. |
| Ms. | Barbara Phillips | Newbridge Citizens Assn. |
| Ms. | Miriam Wilson | Normandy Falls Homeowners Assn. |
| Mr. | Raymond Schmidt | North Ashburton Citizens Assn. |
| Mr. | Michael Garson | North Farm Citizens Assn. |
| Mr. | Sol Gnatt | Northern Chevy Chase Citizens Assn. |
| Ms. | Connie Jacobson | Old Farm Civic Association |
| Ms. | Karen Harris | Old Georgetown Village Condo. Assn. |

List of Community Organizations that were mailed the Notice of Intent and the Public Scoping Meetings

| Title | Contact Name | Association/Organization |
|--------------|-------------------------|------------------------------------|
| Mr. | John DePalma | Old Georgetown Village Homeowners |
| Ms. | Victoria Cargill | Olde Coach Square Homeowners Assn. |
| Ms. | Maxine Schwartzman | Oldfield Homeowners Assn. |
| Mr. | John Coggins | Palisades Assn., Inc. |
| Mr. | Barry Cohen | Palisades Citizens Assn. |
| Mr. | David Gonzalles | Paloma Court Homeowners |
| Ms. | Marietta Ethier | Parc Somerset Condo |
| Dr. | Niki Zaldivar | Park View Citizens Assn |
| | President | Parkside Condo. Assn. |
| Ms. | Kira Lueders | Parkwood Residents Assn. |
| Ms. | Julie Withers | Penbrook Community Assn. |
| Ms. | Karen Kamachaitis | Penbrooke Community Assn. |
| Mr. | Hank Jacob | Pooks Hill Condominium Inc. |
| Mr. | Henry Jacob | Pooks Hill Homeowners Assn. |
| Ms. | Susan Kim | Pooks Hill Square Condo Assn. |
| Mr. | Gerry Levenberg | Potomac Crest Homeowners Assn. |
| Ms. | Brenda Gehan | Potomac Crest Homeowners Assn. |
| Mr. | Monte Gingery | Potomac Falls Homeowners Assn. |
| | George and Ginny Barnes | Potomac Glen Assn. |
| Ms. | Jacki Frank | Potomac Glen Homeowners Assn. |
| Mr. | Richard Sternberg | Potomac Green Civic Association |
| Mr. | Bill Conway, Jr. | Potomac Manor II Homeowners Assn. |

List of Community Organizations that were mailed the Notice of Intent and the Public Scoping Meetings

| Title | Contact Name | Association/Organization |
|--------------|---------------------|--------------------------------------|
| Mr. | Neil Sherman | Potomac Pond Homeowners Assn. |
| Mr. | Benjamin Israel | Potomac Springs Civic Assn. |
| Dr. | Harvey Rubenstein | Potomac Station Homeowners Assn. |
| Mr. | Alan Seldin | Potomac Towne Homeowners Assn. |
| Mr. | David Kerlina | Potomac Woods Citizens Association |
| Mr. | David Bach | Potomac Woods Citizens Association |
| Ms. | Lucille Mannelly | Preston Place T.H./C.C.L. Apt. |
| Mr. | Bruce Blumberg | Quince Orchard Homeowners Assn. |
| Mr. | Kevin Kline | Randolph Civic Assn. |
| | President | Randolph Civic Assn. |
| Mr. | Jesse Baumgold | Rannoch Road Homeowners Assn. |
| Mr. | Jerry Garson | Regency Estates Citizens Assn. |
| Mr. | Richard Blumstein | Regency Estates Citizens Assn. |
| Mr. | Andrew Kavounis | Regency Estates Citizens Association |
| Mr. | Steven Mister | Ridgeleigh Homeowners Assn. |
| Mr. | Ian Knight | River Falls Community Center Assn. |
| Mr. | Martin Zamula | Riverhill Condominium Assn. |
| Mr. | John Tiernan | Riverhill Homeowners Assn. |
| Mr. | Thomas Durek | Riverhill Homeowners Assn. |
| Ms. | Anne Venzen | Riverhill Homeowners Assn. |
| Ms. | Linda Guest | Riverhill Homeowners Assn. |
| Mr. | David P. Fitch | Rivers Edge Homeowners Assn. |

List of Community Organizations that were mailed the Notice of Intent and the Public Scoping Meetings

| Title | Contact Name | Association/Organization |
|--------------|------------------------------|--------------------------------------|
| Mr. | Roger Barth | Riverway Homeowners Assn. |
| | President/Board of Directors | Riviera of Chevy Chase Condo. |
| Ms. | Judith Koenick | Rock Creek Forest Citizens Assn. |
| Ms. | Shannon Hamm | Rock Creek Hills Citizens Assn. |
| Ms. | Jacquelyn Stevens | Rock Creek Hills Residents Assn. |
| Mr. | Alvin Geske | Rock Creek Palisades Citizens Assn. |
| Ms. | Shireen Ambush | Rolling Spring Homeowners Assn. |
| Ms. | Gabriele Gandal | Rollingwood Citizens Assn. |
| Ms. | Alicia Wattenberg | Sacks Neighborhood Assn. |
| Ms. | Miriam Israel | Sacks Neighborhood Assn. |
| Ms. | Marie Dray | Sacks Neighborhood Council |
| Mr. | David Berg | Saddlebrook Association |
| Ms. | Ella Cook | Scotland Community Development Assn. |
| Mr. | Francis L. Higgins | Section 5 of Village of Chevy Chase |
| Mr. | James Flood | Senecabrook Homeowners Assn. |
| Mr. | Jerrold Garson | Seven Locks Civic Assn |
| Mr. | Bruce Blumberg | Shady Grove Village III Condo. |
| Ms. | Virginia Mitz | Somerset Citizens Assn. |
| Mr. | Bernard Norwood | Somerset House II Condominium |
| Mr. | Peter Cody | Somerset House, A Condominium |
| Mr. | Jordan Goldstein | Sonoma Citizens Assn. |
| Ms. | Barbara Fichman | Sonoma Citizens Assn. |

List of Community Organizations that were mailed the Notice of Intent and the Public Scoping Meetings

| Title | Contact Name | Association/Organization |
|--------------|---------------------|-------------------------------------|
| Ms. | Joan Lunney | Sonoma Citizens Assn. |
| Ms. | Joy Rafey | Sonoma Citizens Assn. |
| Mr. | Al Beer | South Bradley Hills Neighborhood |
| Mr. | Marc Toplin | South Tuckerman-Inverness Citizens |
| Ms. | Bonnie Henderson | Spring Lake Condominium Assn. |
| | President | Spring Lake Condominium Assn. |
| Dr. | Andrew Muchmore | Spring Ridge Road Citizens Assn. |
| Mr. | Ali Koknar | Stoneybrook Homeowners Assn., Inc. |
| Mr. | David Sacks | Strathmore Park Condo Assn. |
| Mr. | William Fisher | Strathmore Park Condo Assn. |
| Mr. | Henry Jacob | Strathmore Place Homeowners Assn. |
| Mr. | Melvin Dickover | Strathmore Place Homeowners Assn. |
| | Property Manager | Sumner Square Condo. Assn. |
| Ms. | Laurie Lyons | Tara Citizens Assn. |
| Mr. | Vernon Ricks | Teversall Homeowners Assn., Inc. |
| Mr. | Bill Adler | The Mains Homeowners Assn. |
| | Property Manager | Three Oaks Homeowners Assn. |
| Ms. | Marta Vogel | Tilden Woods Citizens Assn. |
| Mr. | Herbert Maisel | Tildenwood Homeowners Assn., Inc. |
| Mr. | Steven Landsman | Tildenwood Homeowners Assn., Inc. |
| Mr. | Surinder Juneja | Timberlawn South/Tuckerman Walk HOA |
| Mr. | Nick Holst | Timberlawn South-Tuckerman Walk |

List of Community Organizations that were mailed the Notice of Intent and the Public Scoping Meetings

| Title | Contact Name | Association/Organization |
|--------------|---------------------------|-------------------------------------|
| Mr. | Hank Jacob | Timberwood on the Park |
| Mr. | Todd Hoffman | Town of Chevy Chase - Section IV |
| Ms. | Kitty Raufaste | Town of Kensington |
| Mr. | Walter Behr | Town of Somerset |
| Ms. | Fern Brodney | Treasure Oak Community Association |
| Mr. | Henry Jacob | Trophy Court Homeowners Assn. |
| Mr. | Craig Windham | Tuckerman Station Condominium |
| Mr. | Martin Rush | Tuckerman Station Homeowners Assn. |
| Ms. | Bernadine Kalberer | Tuckerman Station Homeowners Assn. |
| Ms. | Shireen Ambush | Tuckerman Station Homeowners Assn. |
| Ms. | Susan Cameron | Turning Creek Homeowners Assn. |
| Mr. | Bernard Fisker | Village of Bethesda HOA |
| Mr. | Michael Cicero | Village of Drummond |
| Ms. | Jean Spurling | Village of Martin's Addition |
| Ms. | Sally Klippel | Village of North Chevy Chase |
| Mr. | Andy Miller | Vineyard Condo. Homeowners Assn. |
| Mr. | Chris Worch | Walnut Woods Citizens Assn. |
| Mr. | Henry Jacobs | Waterford Place Homeowners Assn. |
| Mr. | Jeffrey May | West Bethesda Park Homeowners Assn. |
| Mr. | Carl Kownig | West Bradley Citizens Assn. |
| Ms. | Sandy Vogelgesang | West Bradley Citizens Assn. |
| Ms. | Patricia Knowles-Stogoski | West Kensington Civic Assn. |

List of Community Organizations that were mailed the Notice of Intent and the Public Scoping Meetings

| Title | Contact Name | Association/Organization |
|--------------|---------------------|------------------------------------|
| Ms. | Barbara Barracato | Westchester Condominium |
| Ms. | Barbara Barracato | Westchester Homeowners Assn. |
| Mr. | Bruce Blumberg | Westchester West Condo Assn. |
| Mr. | Alan Ehrlich | Westlake Park Condo Assn. |
| | General Manager | Westlake Park Condo. B Inc. |
| Mr. | Peter Kirchner | Westlake Terrace Civic Assn. |
| Mr. | Michael Laplaca | Westlake Terrace Condo. Assn. |
| Mr. | Jonathan Turak | Westlake Terrace Condominium Assn. |
| Mr. | Glen Loveland | Westlake Terrace Condominium Assn. |
| | Property Manager | Westlake Terrace Park Condo A |
| Ms. | Lynn Mangione | Westlake Towers Condo. Assn. |
| Mr. | Tony Zapata | Wetherstone Homeowners Assn. |
| | President | Wexford Homeowners Assn., Inc. |
| Ms. | Shireen Ambush | Wheaton Square East Condo. Assn. |
| Mr. | Michael Modesitt | Whitehall Condominium Association |
| Mr. | Michael Tardif | Whitehall Condominium Association |
| Ms. | Pam Miller | Whittier Woods Civic Assn. |
| Mr. | Dennis Cassidy | Wickford Community Assn. |
| Mr. | Jack Cochrane | Wildwood Hills Citizens Assn. |
| Mr. | Jay Etris | Wildwood Manor Citizens Assn. |
| Mr. | Steve Good | Wildwood Manor Citizens Assn. |
| Ms. | Martha Golden | Willoughby of Chevy Chase |

List of Community Organizations that were mailed the Notice of Intent and the Public Scoping Meetings

| Title | Contact Name | Association/Organization |
|--------------|---------------------|--------------------------------------|
| Mr. | Garry Plushnick | Willowbrook Cambridge Resident Assn. |
| Mr. | Alan Feld | Willowbrook Citizens Assn. |
| Ms. | Donna Ely | Winterset Civic Assn. |
| Mr. | Harold Weiss | Wisconsin Condo Homeowners Assn. |
| Ms. | Ann Fink | Woodfield at Manchester Farms |
| Ms. | Pam Blumenthal | Woodhaven Citizens Association |
| Mr. | Earl Kendrick | Woodmont Spring Condos |
| Ms. | Debbie Weinman | Woodrock Homeowners Assn., Inc. |
| Ms. | Virginia Miller | Wyngate Citizens Assn. |

NOTE: Several Community Associations and Organizations are listed multiple times.