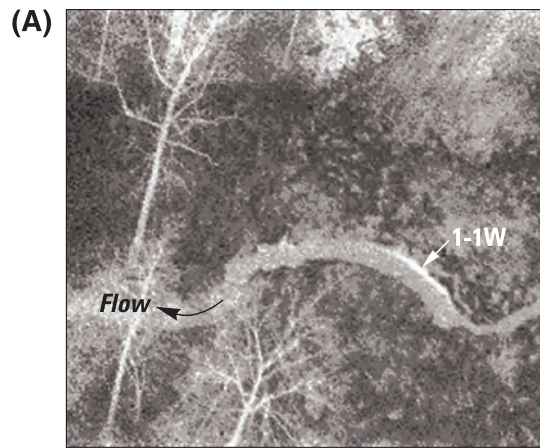
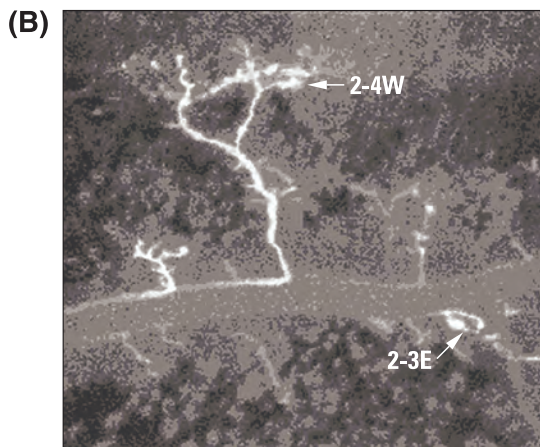


Appendix 2. Aerial Thermal-Infrared Images from Seep Areas in the West Branch Canal Creek, Aberdeen Proving Ground, Maryland



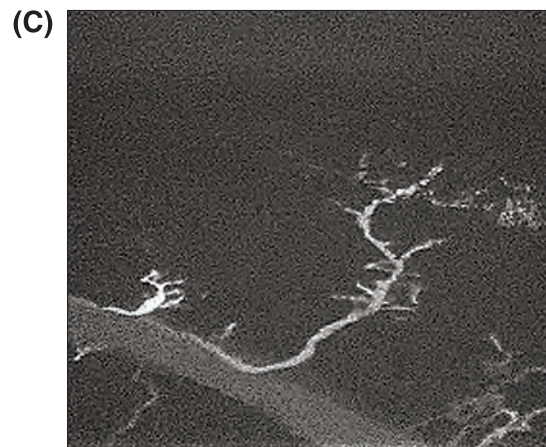
Seep 1-1W, looking west, 2002.

5 FEET



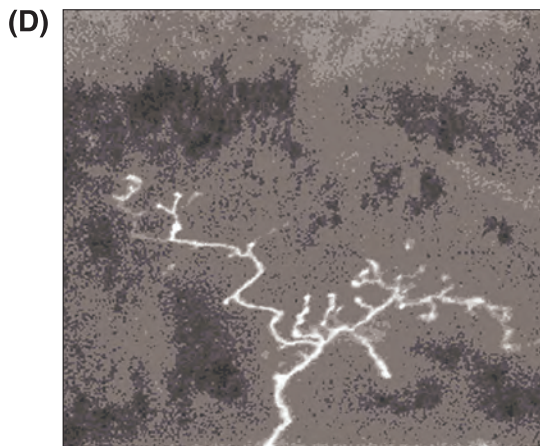
Seeps 2-3E and 2-4W, looking west, 2002.

20 FEET



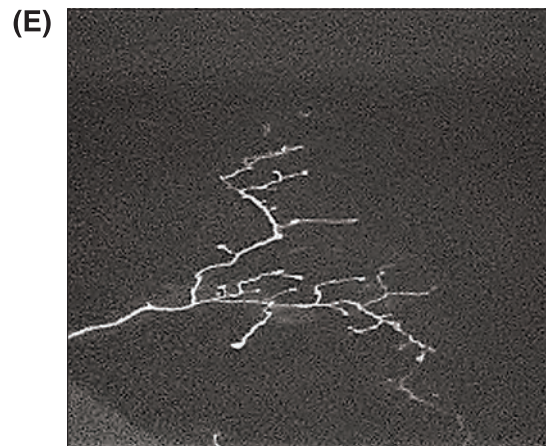
Seep 2-4W, looking southwest, 2003.

20 FEET



Seep 2-6W, looking southwest, 2002.

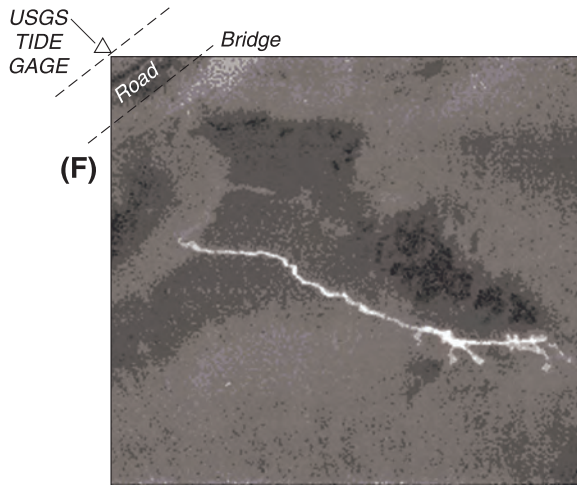
10 FEET



Seep 2-6W, looking south, 2003.

10 FEET

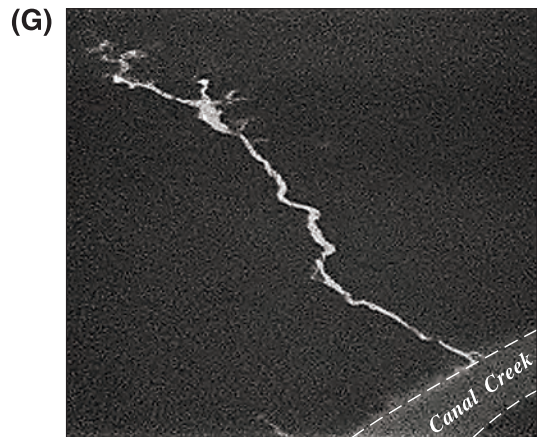
Appendix 2. Aerial Thermal-Infrared Images from Seep Areas in the West Branch Canal Creek, Aberdeen Proving Ground, Maryland—Continued



(F)

Seep 2-7W, looking southwest, 2002.

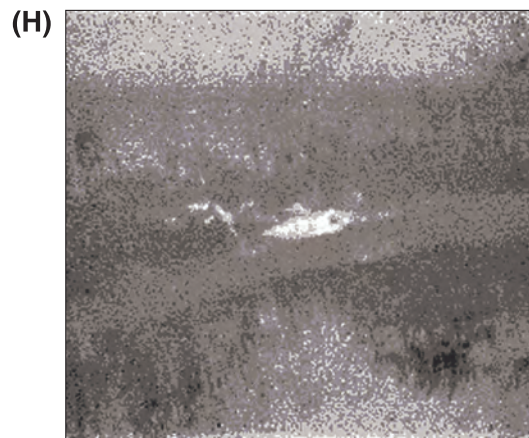
20 FEET



(G)

Seep 2-7W, looking north, 2003.

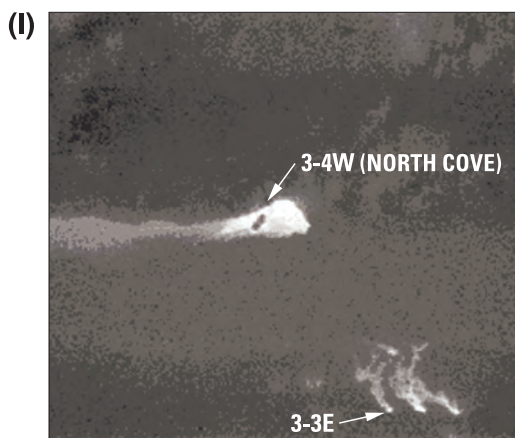
20 FEET



(H)

Seep 3-2E, looking east, 2002.

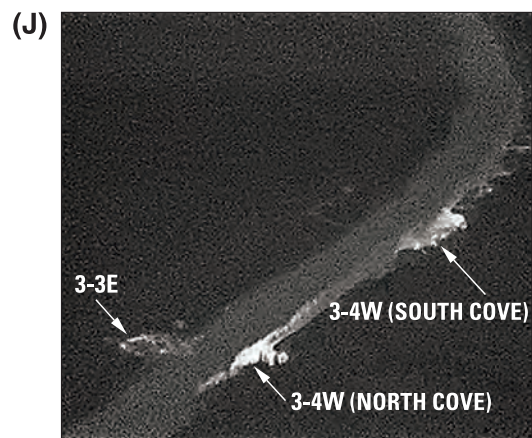
20 FEET



(I)

Seeps 3-3E and 3-4W (north cove), looking west, 2002.

20 FEET

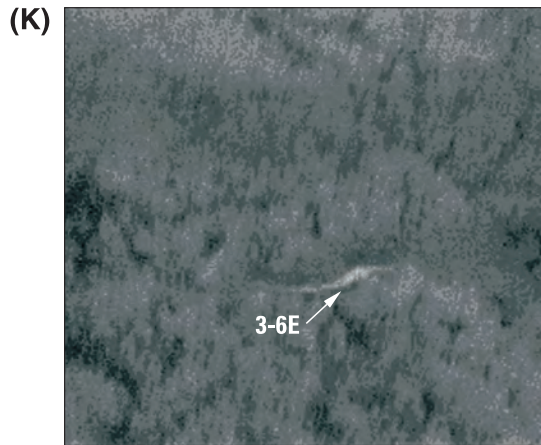


(J)

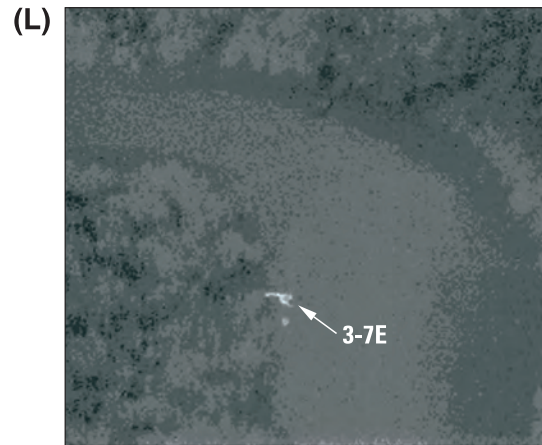
Seeps 3-3E and 3-4W (north and south coves), 2003.

20 FEET

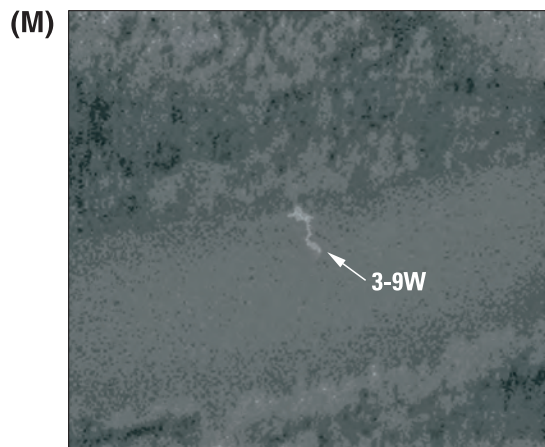
Appendix 2. Aerial Thermal-Infrared Images from Seep Areas in the West Branch Canal Creek, Aberdeen Proving Ground, Maryland—Continued



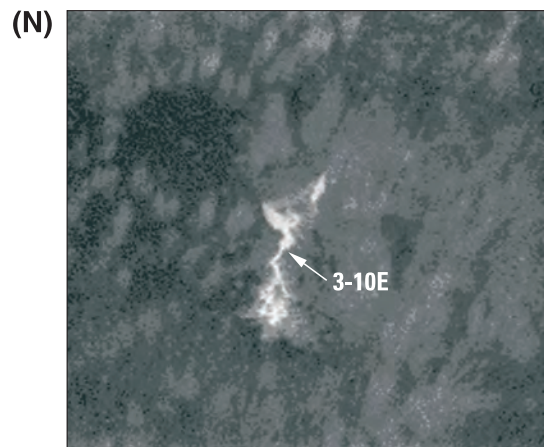
Seep 3-6E, looking east, 2002.
20 FEET



Seep 3-7E, looking southwest, 2002.
20 FEET



Seep 3-9W, looking west, 2002.
20 FEET



Seep 3-10E, looking east 2002.
20 FEET