

# PROVO RIVER RESTORATION PROJECT

## Q & A

### 2001 Construction Season

**Q: What is the Provo River Restoration Project?** The Utah Reclamation Mitigation and Conservation Commission, a federal agency, is responsible for implementing the Provo River Restoration Project. Its purpose is to restore the river pattern and ecological function of the middle Provo River (between Jordanelle Dam and Deer Creek Reservoir) in order to make up for fish, wildlife and recreational losses caused by federal water reclamation projects in Utah, particularly the Central Utah Project. Provo River restoration, which began construction in 1999, consists of constructing a multiple-thread meandering channel between Jordanelle Dam and Deer Creek Reservoir, reconnecting the river to existing remnants of historic secondary channels and constructing small side channels to recreate aquatic features. Existing levees are set back to create a near natural flood plain allowing the river to change course naturally. Planting and fostering streamside vegetation will provide necessary environment for healthy fisheries. Side channels and ponds will improve fish habitat and create habitat for wetland dependent wildlife.

**Q: Where will the middle Provo River be worked on this year?** The 2001 project reach begins approximately 1.25 miles north of Midway Lane and extends upstream approximately 2 miles (see map on reverse side). This segment encompasses a longer reach than was undertaken for restoration either of the past two years. The 2001 project skips over approximately 1.5 miles of river downstream from River Road, where we finished last year, because all necessary land is not yet publicly acquired. This reach will be reconstructed in a future year.

**Q: When will this year's reconstruction take place?** The 2001 project will begin July 16, 2001 and be under construction until approximately December 15, 2001. We intend to begin earlier this year because the 2001 project reach is very long. We hope to finish major construction prior to the peak, and hopefully before the start of, brown trout spawning in late November.

**Q: What part of the river will be closed to public access and when?** For the safety of the public and our construction crews, we will close public access to the entire 2001 project reach, as described above, from July 16 to December 15, 2001, unless otherwise posted. Anglers are reminded that not all of the current Provo River corridor is yet in public ownership, and are reminded to respect public and private property and to obtain permission from landowners as necessary before going fishing.

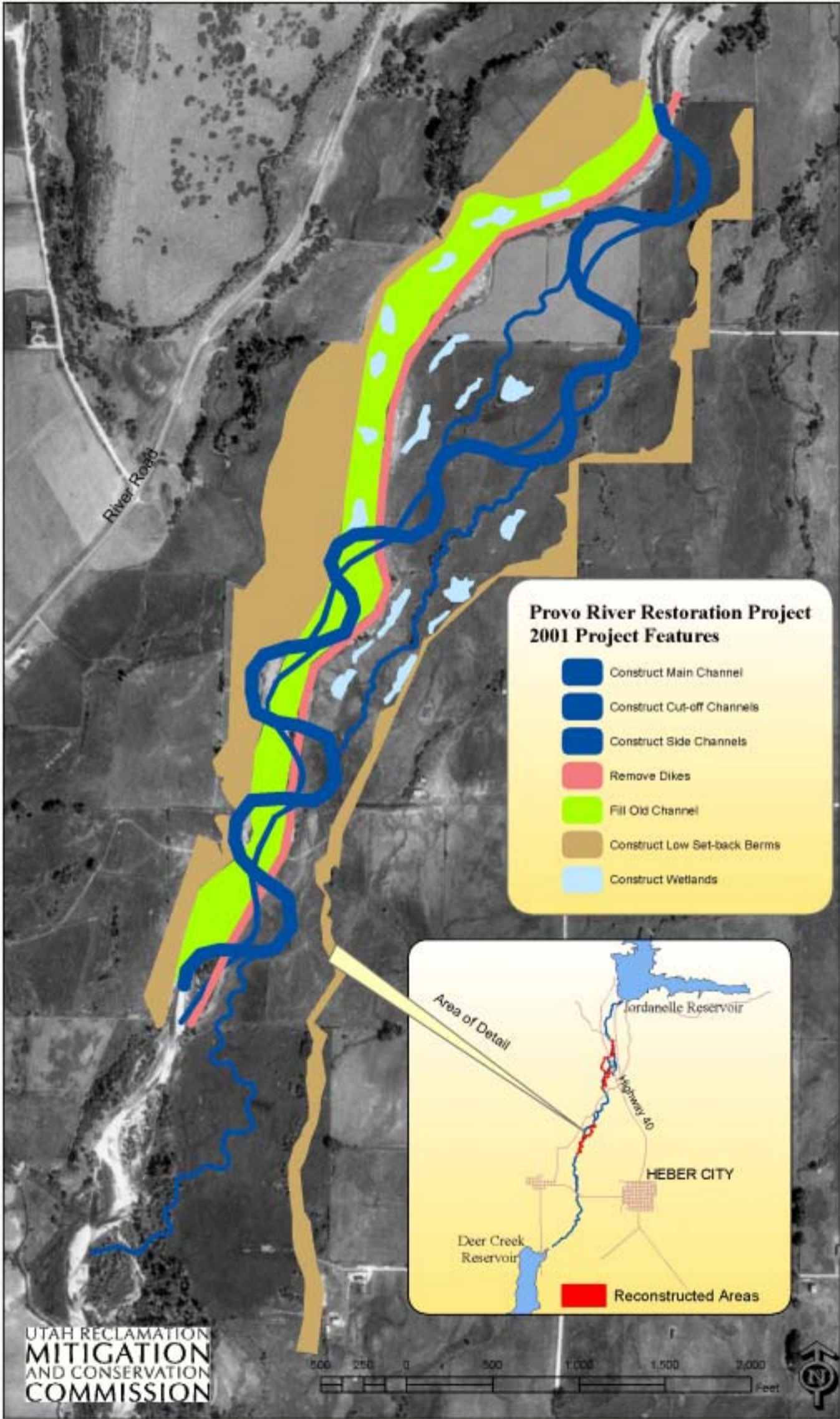
**Q: How will the fishery be affected?** Unfortunately, increases in turbidity (cloudy water) during construction can not be entirely prevented and should be expected. Therefore, if anglers wish to avoid waters subject to periodic cloudy conditions, fishing is recommended upstream of the project area during construction. Also, crews generally will not be working Saturdays and Sundays. Otherwise, the fishery should not be affected outside the construction area. Within a reconstructed river reach, we expect it to take six months to a year for the fishery in that reach to establish (for the food base to rebuild). After this period, the fishery should be vastly improved.

**Q: What is being done to minimize muddy water downstream of a construction area?** In the process of reconstructing the middle Provo River, frequent crossings of the river channel with heavy equipment are necessary at times. To minimize disturbance to the aquatic environment, we will install temporary river crossings utilizing culverts, which should help limit turbidity. However, some digging from the active river channel is necessary and temporary increases in turbidity are still expected.

**Q: Where has reconstruction already taken place?** The Provo River Restoration Project began in 1999. Since then, over two miles of river reconstruction and habitat restoration has been completed between about 1/4 mile below Jordanelle Dam and River Road, in Midway (see map). Public access to this area is open and includes three new access sites with improved parking, an informational kiosk, limited trails and restrooms.

**Q: Who are the construction crews?** The U.S. Bureau of Reclamation and Utah Division of Wildlife Resources construction crews are doing the work under the oversight and in cooperation with the Mitigation Commission.

**Q: Where can I get more information?** For more information, please contact Diane Simmons at the Utah Reclamation Mitigation and Conservation Commission, **801-524-3146**.



River Road

**Provo River Restoration Project  
2001 Project Features**

- Construct Main Channel
- Construct Cut-off Channels
- Construct Side Channels
- Remove Dikes
- Fill Old Channel
- Construct Low Set-back Berms
- Construct Wetlands

**Area of Detail**

Jordanelle Reservoir

Highway 50

HEBER CITY

Deer Creek Reservoir

Reconstructed Areas

UTAH RECLAMATION  
MITIGATION  
AND CONSERVATION  
COMMISSION

