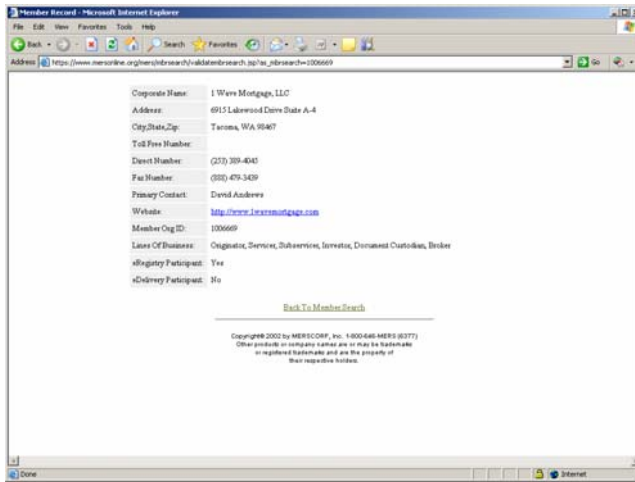


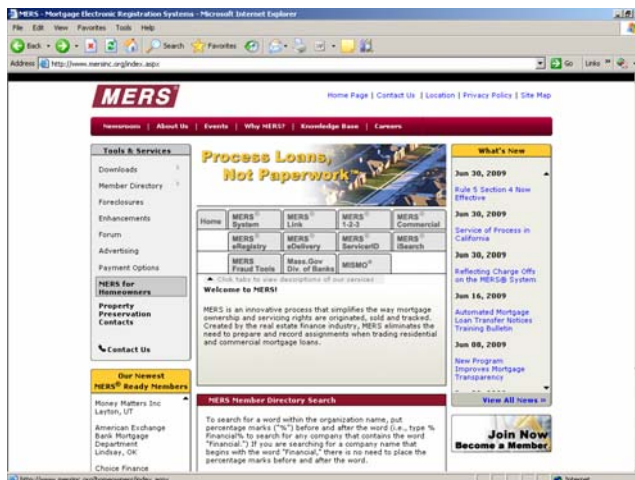


## MERS Instructions Page 2

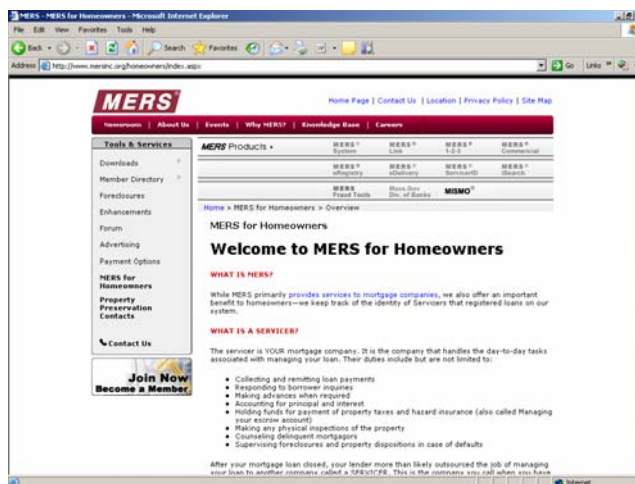


- Example of servicer level data.
- Click on the hyperlink to access the servicer's web page.

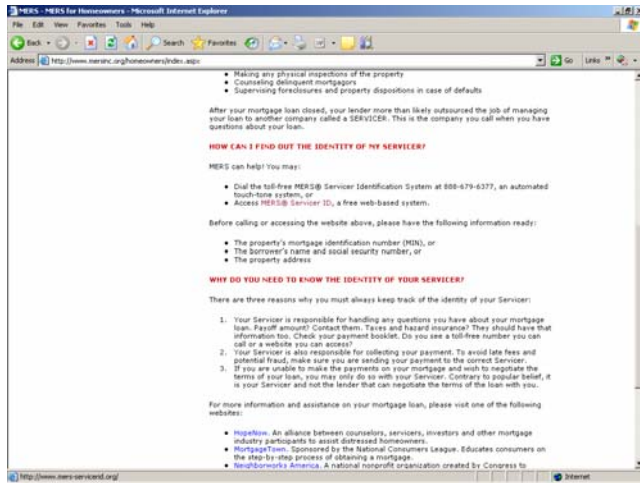
## How to use MERS® to find a servicer for a specific property or properties on a particular street



- Return to the home page.
- Move to the left side of the web page, point your cursor at "MERS® for Homeowners" and left click.



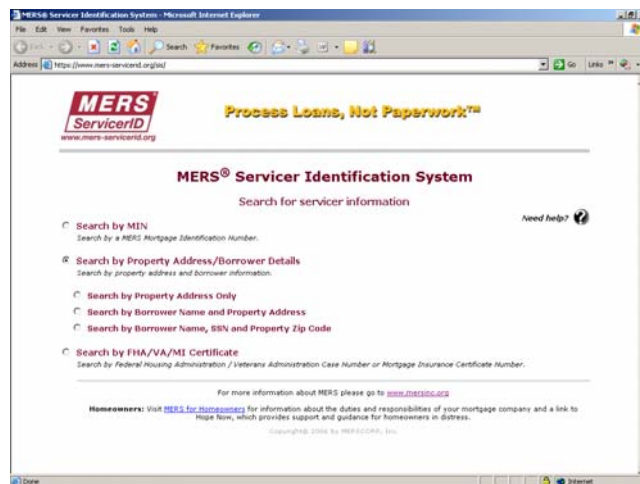
- MERS® for Homeowners welcome page.
- Scroll down for additional information.



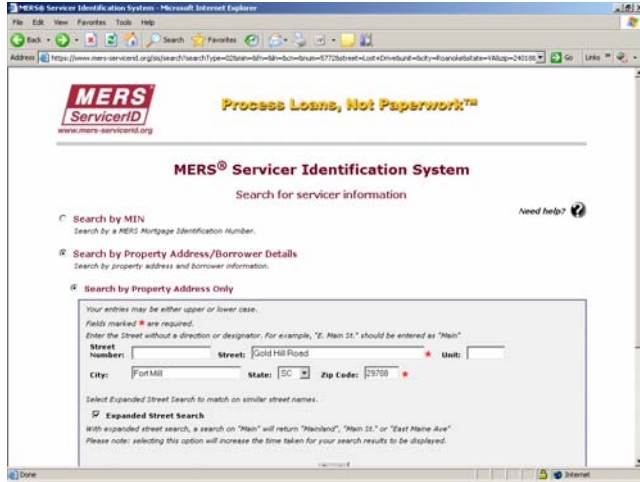
- Move your cursor to the hyperlink for MERS® Service ID.
- Left click.



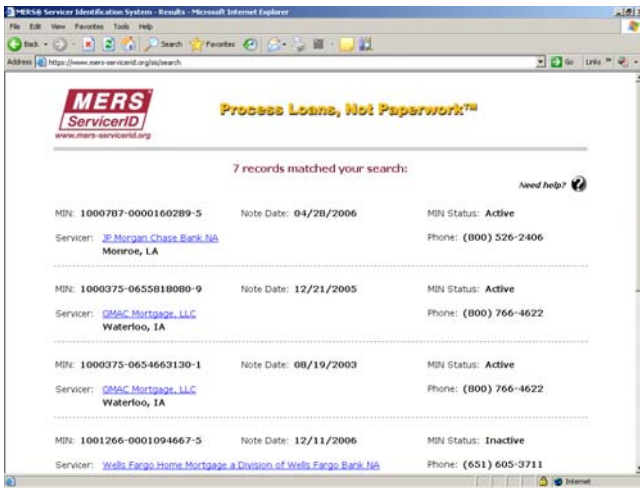
- Select the “Search by Property Address/Borrower Details” radio button.



- Select the “Search by Property Address Only” radio button.



- Enter the street number (if available), street name, unit number (if available), city, state, and zip. Note that “street” and “zip” are required fields.
- Select the “Expanded Street Search” block to include similar street names, or to search all registered properties on a particular street.
- Click the “Search” button.



- Enter the street number (if available), street name, unit number (if available), city, state, and zip. Note that “street” and “zip” are required fields.

For more information, go to [www.mersinc.org](http://www.mersinc.org).