

United States  
Department of  
Agriculture

Forest Service

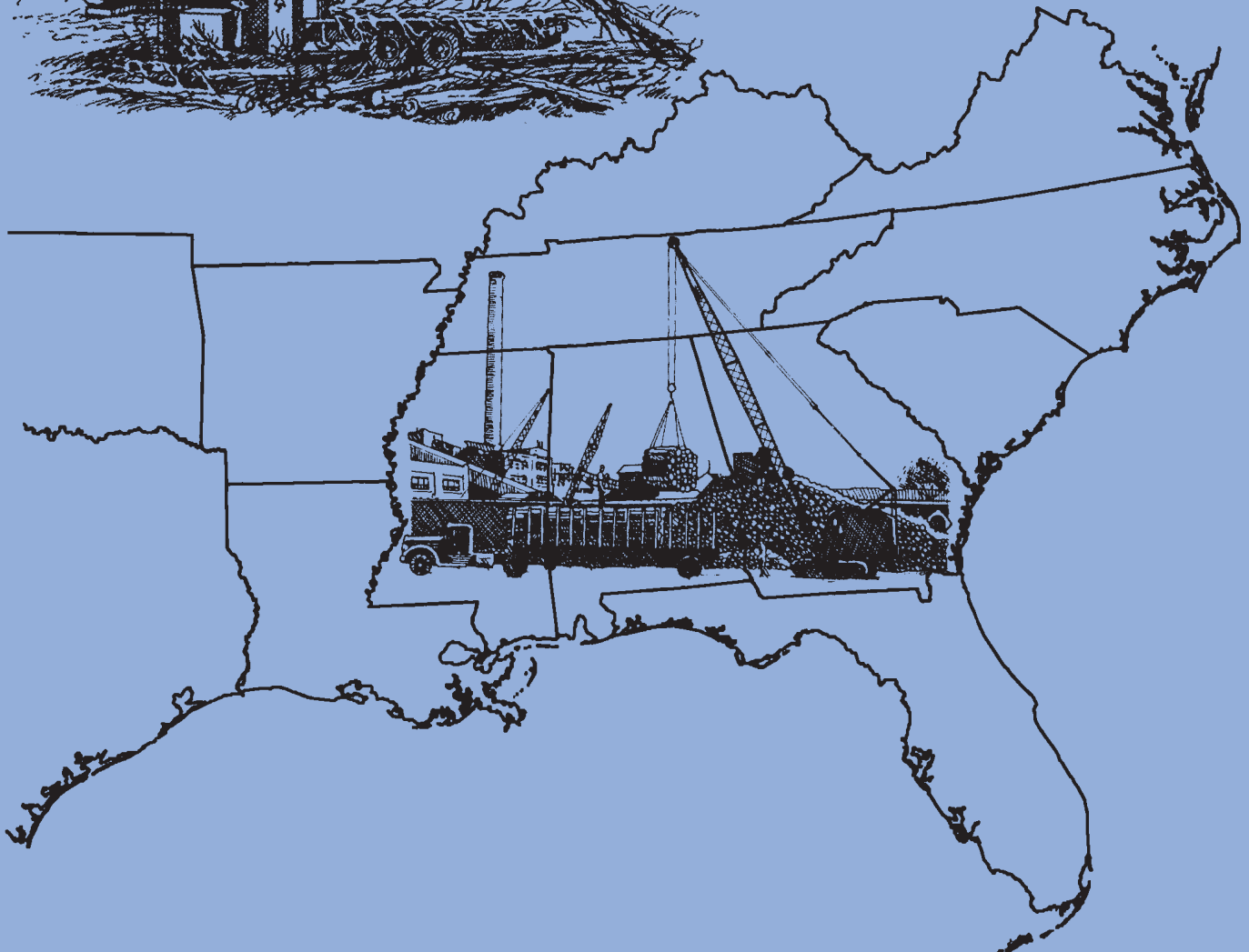
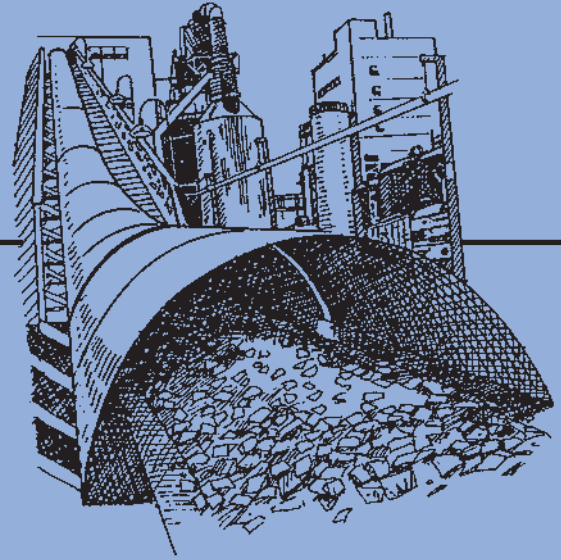


Southern  
Research Station

Resource Bulletin  
SRS-134

# Southern Pulpwood Production, 2006

Tony G. Johnson and  
Carolyn D. Steppleton



*In this report:*

	<i>Page</i>
<b>Southern pulpwood production by—</b>	
<b>Appendix</b>	9
• Roundwood and plant residues	11–13
• State	14–37
• Species group	11–37
• Territory	11
• County	14–37
• Movement	38–39
<b>Pulpmills using southern wood by—</b>	
• Location, process, and capacity	40–42

Note: All tables in this report are available in Microsoft® Excel workbook files. Upon request these files will be supplied in the format the customer requests.

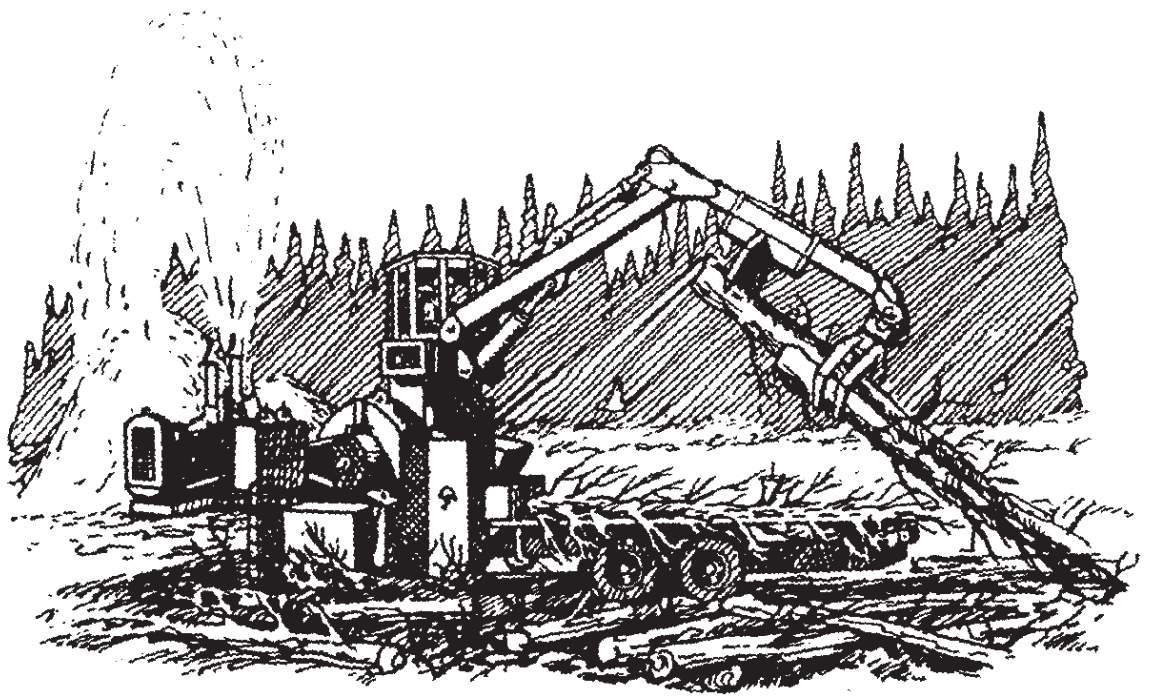
The use of trade or firm names in this publication is for reader information and does not imply endorsement by the U.S. Department of Agriculture of any product or service.

May 2008

Southern Research Station  
200 W.T. Weaver Blvd.  
Asheville, NC 28804

# Southern Pulpwood Production, 2006

**Tony G. Johnson**, Forester  
Forest Inventory and Analysis,  
Forest Service, Southern Research Station  
U.S. Department of Agriculture, Knoxville, TN  
and  
**Carolyn D. Steppleton**, Statistical Assistant  
Forest Inventory and Analysis  
Forest Service, Southern Research Station  
U.S. Department of Agriculture, Asheville, NC



## Introduction

This annual publication presents the findings of a 100-percent canvass of pulpmills that draw roundwood or wood residues from the 13 Southern States. Canvass data are compiled, analyzed, and reported annually by the Forest Service, U.S. Department of Agriculture, Southern Research Station. In 2006, 82 of the 87 mills canvassed responded. Past canvass data and other sources of information were used for mills that did not respond. Mill data reported in nonstandard units were converted to standard cords using regional conversion factors. All production figures are reported in cords and do not include pulpwood that is exported out of the country. Production expressed in equivalent green tons is reported in tables A.1, A.2, and A.6 through A.19.

## Pulpwood

Total southern pulpwood production, which includes both roundwood chipped at pulp mills or at independent chip mills, and other primary industry mill residues, was up 1 percent in 2006 to 64.7 million cords, or 170.9 million green tons. At 46.0 million cords, softwood production increased nearly 750,000 cords, or 2 percent. Hardwood production was down only 58,000 cords, remaining relatively stable at 18.7 million cords. In 2006, the South Central Region's (Alabama, Arkansas, Kentucky, Louisiana, Mississippi, Oklahoma, Tennessee, and Texas) pulpwood production increased nearly 1 percent from 34.7 million cords to 34.9 million cords. Softwood pulpwood production increased nearly 2 percent in the South Central Region; however, this increase was partially offset by a 1-percent decline in hardwood production of more than 152,000

cords. The Southeast's (Florida, Georgia, North Carolina, South Carolina, and Virginia) pulpwood production was up nearly 2 percent from 29.3 million cords to 29.8 million cords (table A.1). Softwood pulpwood production was up 2 percent in this region, or 397,000 cords, while hardwood production increased nearly 94,000 cords, or 1 percent. Alabama's pulpwood production increased 3 percent in 2006 to 10.5 million cords, and led the South in total pulpwood production (fig. 1). Georgia's production increased 6 percent from 9.7 million cords to 10.2 million cords. Production in Mississippi was up 3 percent to 7.1 million cords, while Louisiana's production was up 2 percent to 6.3 million cords. South Carolina's production increased 2 percent to 6.1 million cords. Collectively, these five States accounted for more than 40 million cords, or 62 percent of the South's total production in 2006 (table A.2). Softwood roundwood and residues combined accounted for 71 percent of the total southern pulpwood production, while hardwoods accounted for the remaining 29 percent (table A.3).

## Roundwood

Roundwood pulpwood continues to be the primary fiber source used in pulp manufacture in the South, accounting for 72 percent of the total southern pulpwood production in 2006, the same as in 2005, but compared to 74 percent in 2004 and 72 percent of total pulpwood production in 2003 (fig. 2). Overall, the South's roundwood production remained relatively stable increasing only 123,000 cords to a total of 46.3 million cords (table A.4). Softwood accounted for 68 percent of the total roundwood production. Softwood roundwood production was up 2 percent, or more than 500,000 cords, while hardwood roundwood production declined nearly 379,000 cords, or 3 percent. Only five

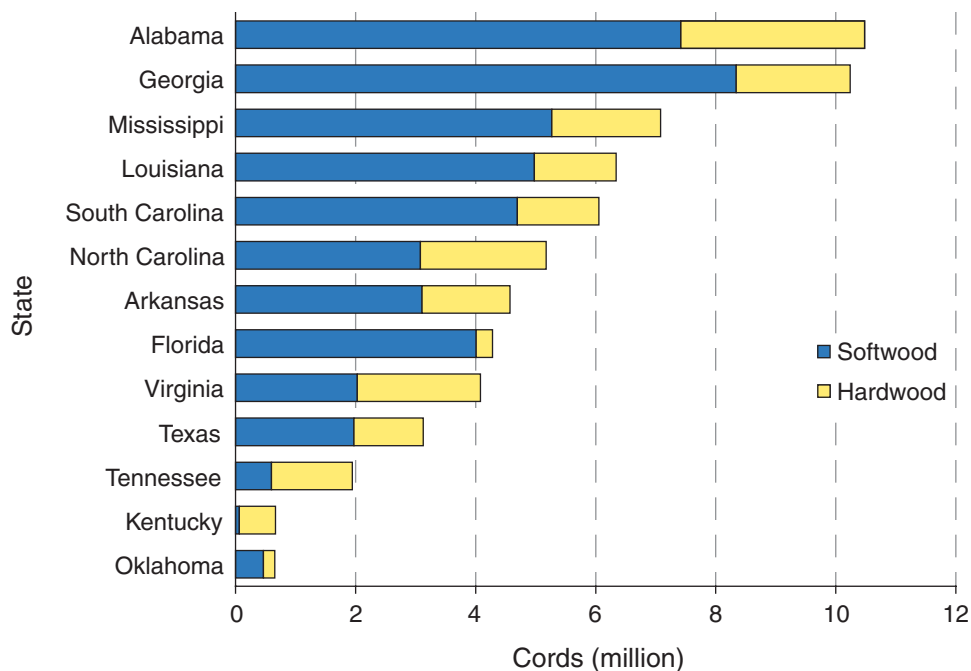


Figure 1—Pulpwood production by State and broad species, 2006.

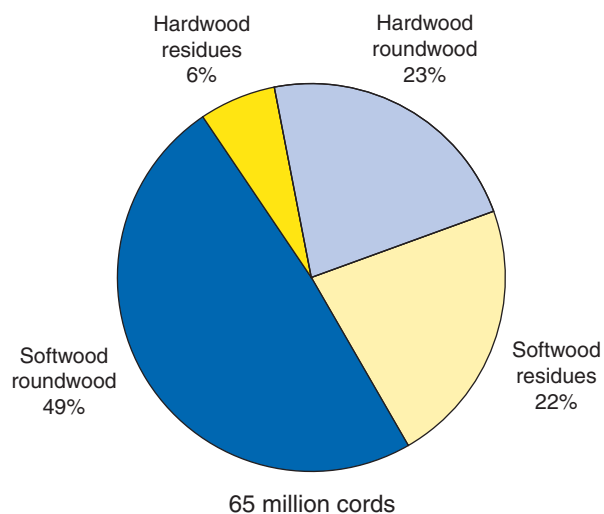


Figure 2—Softwood and hardwood components of southern pulpwood production, 2006.

Southern States—Alabama, Florida, Georgia, Louisiana, and Mississippi—showed increases in roundwood production, ranging from 1 to 8 percent. Most Southern States showed small to moderate declines in roundwood production. Georgia’s roundwood production increased 8 percent and led in total roundwood production with 7.82 million cords and was the leading producer of softwood roundwood at 6.4 million cords. Alabama’s roundwood production increased 2 percent and was a very close second to Georgia in total roundwood production with 7.8 million cords. Alabama was the leading producer of hardwood roundwood, at 2.5 million cords. Mississippi, Louisiana, and South Carolina followed with 5.0, 4.7, and 4.4 million cords, respectively. Combined production in these five States amounted to 29.7 million cords, or 64 percent of the South’s roundwood total.

### Wood Residues

Mills reported two types of receipts: (1) roundwood and (2) wood residues. Wood residues consist primarily of mill residue chips, a byproduct of sawmilling and veneer mill operations. Chips that are produced in the woods or generated when material received as roundwood by primary producers is chipped instead of being milled are not technically wood residues, but are reported as mill residues in this bulletin.

In 2006, wood residue production in the South increased 3 percent from 17.8 million cords in 2005 to 18.3 million cords, or 44 million tons (table A.5). Softwood residue production increased 2 percent to 14.3 million cords and accounted for 78 percent of wood residues produced. Hardwood residue production was up from 3.7 million cords in 2005 to 4.1 million cords, a 9-percent increase. Eight Southern States showed an increase in wood residue production, while five States had moderate declines ranging from 1 to 20 percent. Alabama led Southern States in the production of wood residues at 2.7 million cords, followed

by Georgia with 2.4 million cords, and Mississippi, North Carolina, and Louisiana with 2.1, 1.8, and 1.7 million cords, respectively. Combined wood residue production in these five States amounted to 10.6 million cords, or 58 percent of the South’s total.

### County or Parish Production

Table A.6 summarizes pulpwood production in the South by source of wood, State, year, and number of mills for the years 1995-2006. Tables A.7 through A.19 report county and parish (herein county) patterns of 2006 roundwood pulpwood production for domestic pulpmills for the individual Southern States. Wood residues and pulpwood production exported outside the United States are not included in these figures because the county of origin for the residues and exports are difficult, if not impossible, to determine. Of the 1,002 counties in the Southern States, 900 produced softwood or hardwood roundwood or both in 2006 compared to 872 in 2005, 873 in 2004, and 893 in 2003. Of the producing counties, only 14, or 2 percent, harvested more than 250,000 cords of softwood and hardwood roundwood combined, with 10 of the 14 counties in Alabama and Louisiana. Fourteen percent, or 127 counties evenly distributed across the South, had roundwood pulpwood production ranging between 100,000 and 250,000 cords, while 185 counties had production that ranged between 50,000 and 99,999 cords. The remaining 574 counties, or 64 percent of producing counties, had production of < 50,000 cords. Figures 3 and 4 show production of softwood and hardwood roundwood pulpwood in cords per square mile, which discounts the effect of county size on concentration of production. In both figures, counties in the dark shade of red are those that produced more than 100 cords per square mile. Across the South, 204 counties had production of more than 100 cords of softwood per square mile, while only 32 counties had hardwood production in that range (table 1).

A barometer for degree of local competition for pulpwood is the number of mills procuring wood from each county (figs. 5 and 6). In 352 of the producing counties, or 39 percent, 1 to 3 mills were actively procuring both softwood

**Table 1—Number of producing counties in the South, by range of cords per square mile for softwood and hardwood roundwood, 2006**

Range cords/sq. mi.	Softwood number of counties	Hardwood number of counties
0	54	38
0.001–10.0	244	259
10.1–50.0	220	440
50.1–100.0	178	131
100.1–593.7	204	32
<b>Total</b>	<b>900</b>	<b>900</b>

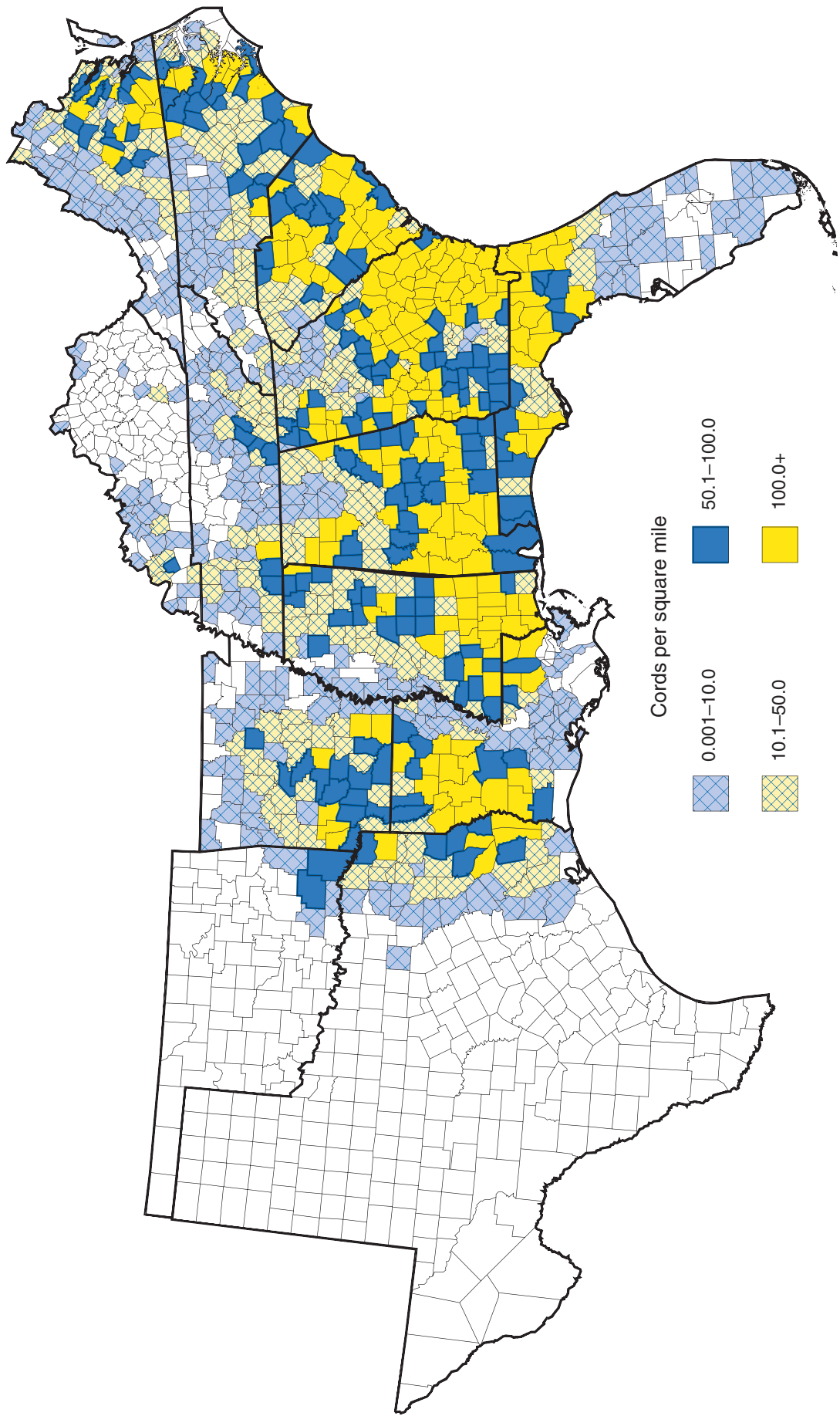


Figure 3—Softwood roundwood production in the South by county or parish, 2006.

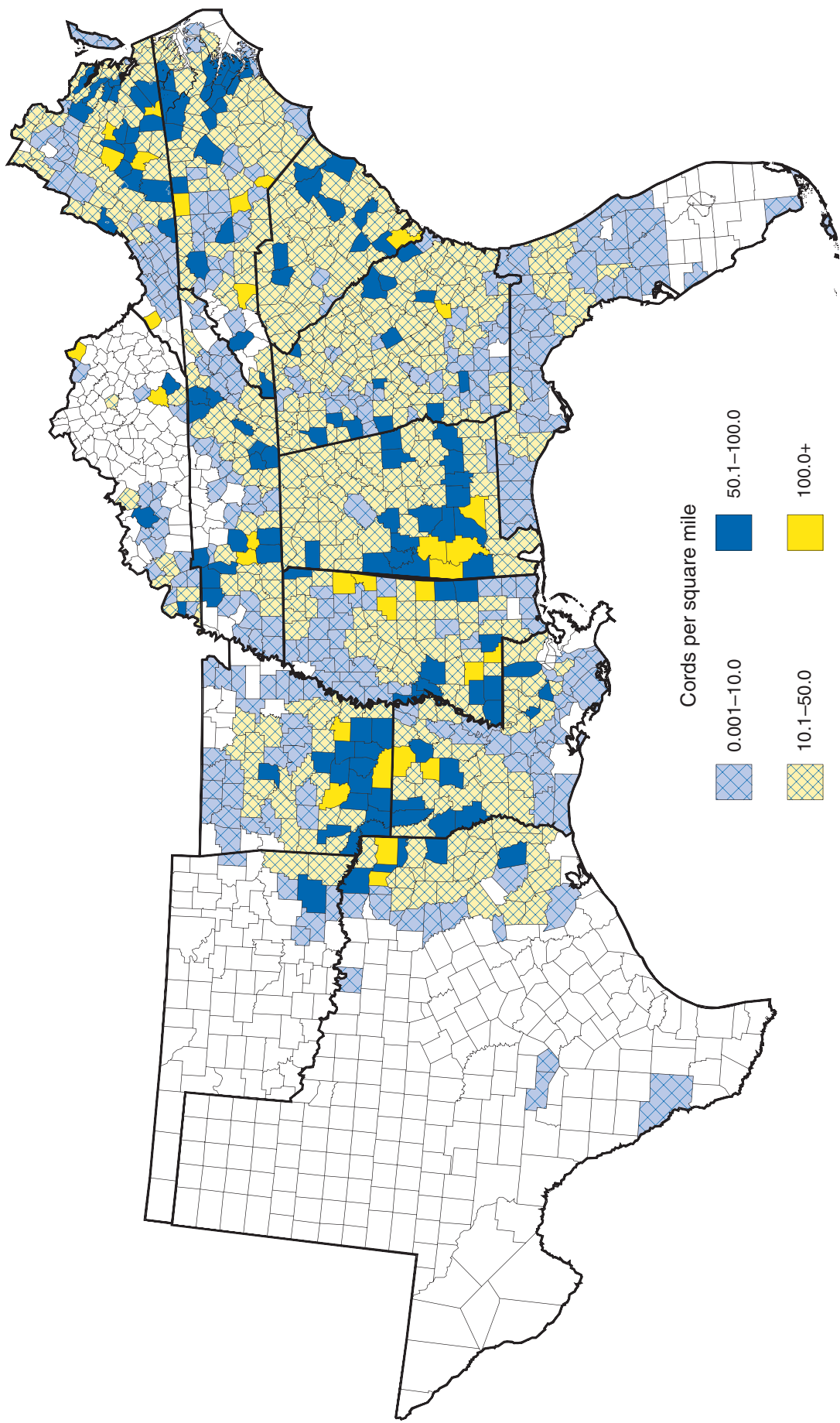


Figure 4—Hardwood roundwood production in the South by county or parish, 2006.



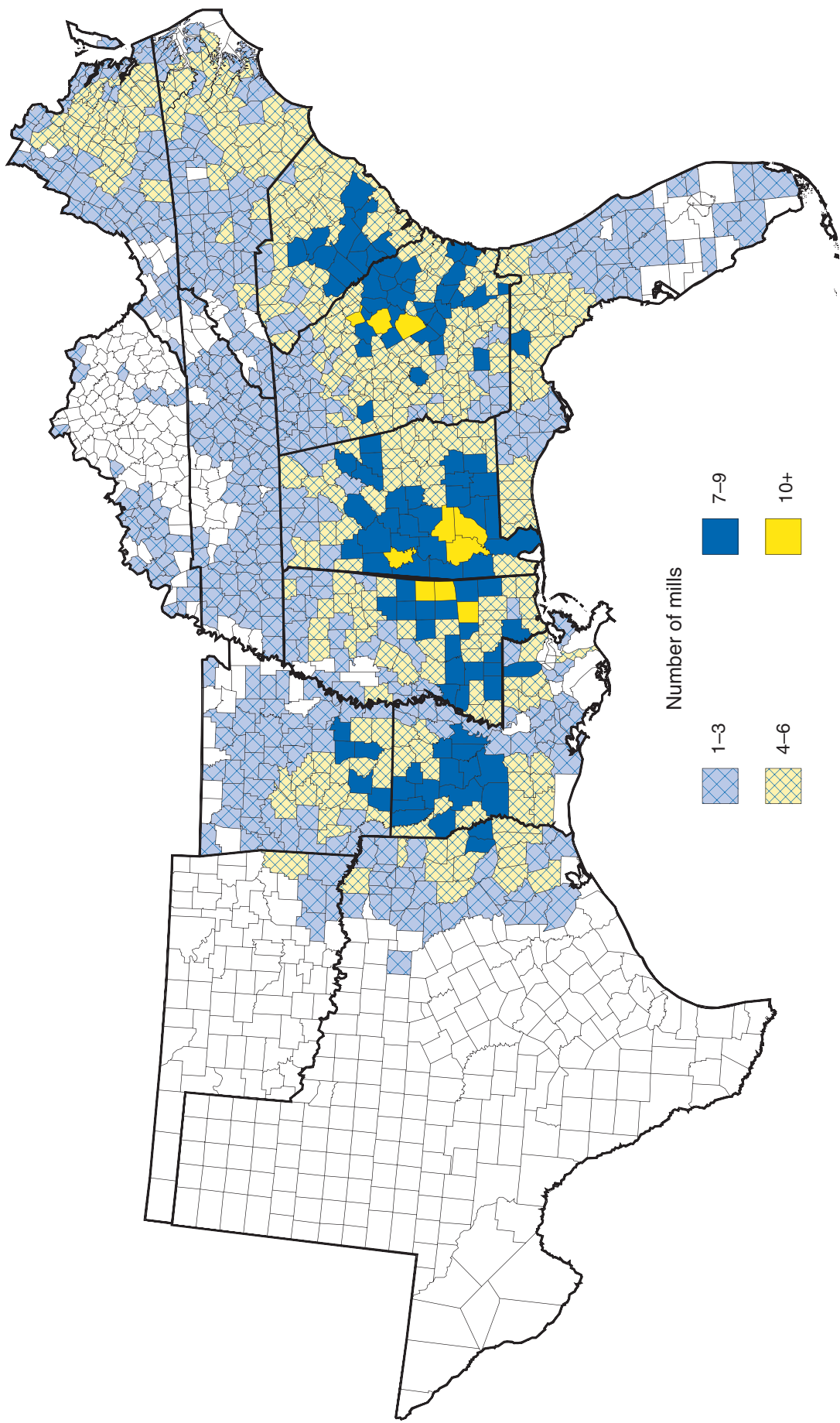


Figure 5—Number of mills competing for softwood roundwood by county or parish, 2006.

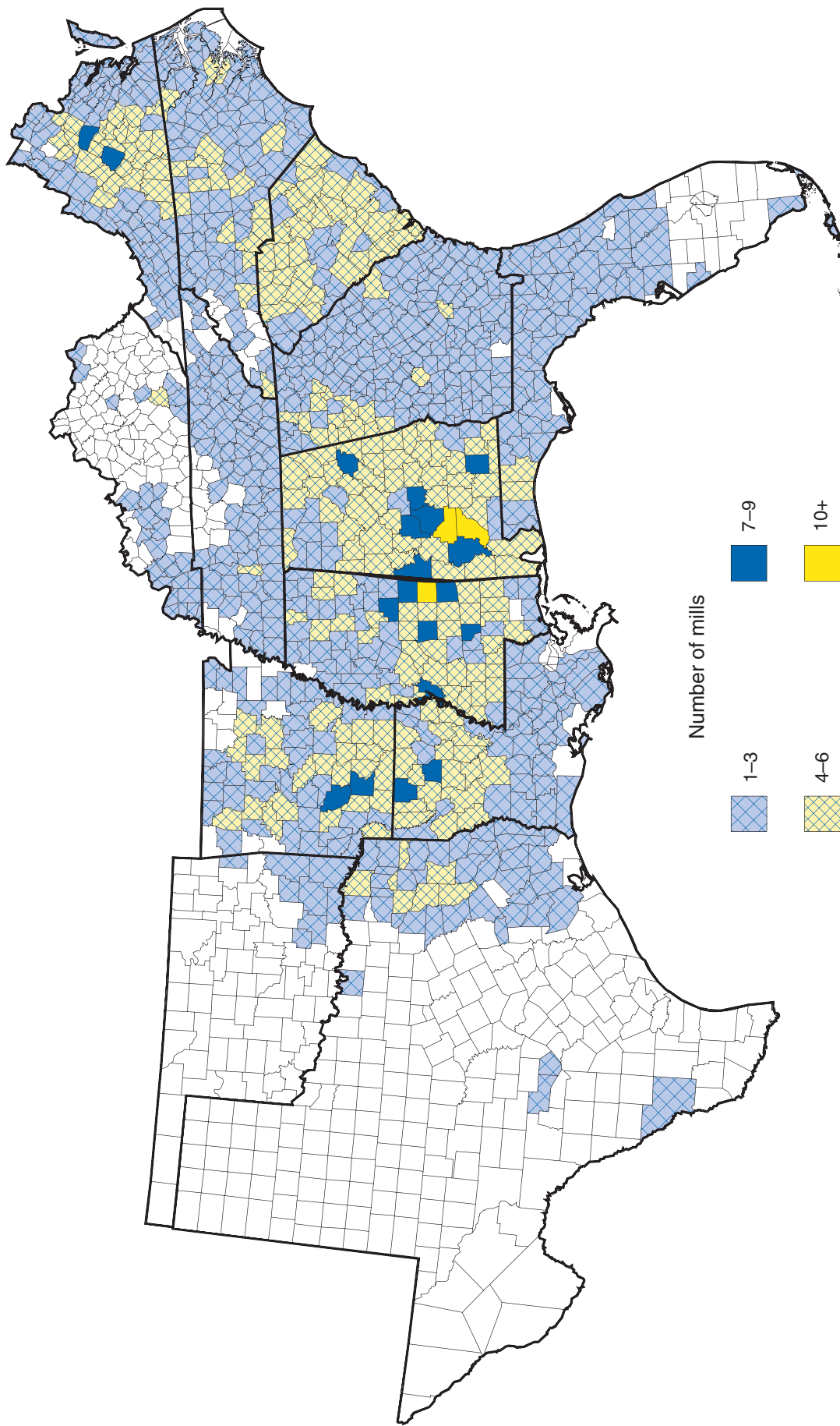


Figure 6—Number of mills competing for hardwood roundwood by county or parish, 2006.

and hardwood roundwood (table 2). In 343 counties, or 38 percent, 4 to 6 mills were actively procuring wood; and in the remaining 205 counties, or 23 percent, 7 or more mills were active. By comparison, in 1997 a peak year for southern pulpwood production, there were 103 pulpmills active in the South (table A.6) and 347 counties, or 38 percent, had 7 or more mills competing for wood.

## Roundwood Movement

Tables A.20 and A.21 show the softwood and hardwood roundwood pulpwood movement for the Southeast and South Central Regions. Numbers in boxes represent roundwood harvested and retained for processing within each

**Table 2—Number of producing counties in the South by number of pulpmills procuring softwood and hardwood roundwood, 2006**

Mills number	Combined <sup>a</sup> number of counties	Softwood <sup>b</sup> number of counties	Hardwood <sup>c</sup>
0	0	54	38
1–3	352	424	613
4–6	343	306	227
7–9	172	106	19
10+	33	10	3
Total	900	900	900

<sup>a</sup> Combined is counties with mills procuring both softwood and hardwood.

<sup>b</sup> Softwood is counties with mills procuring only softwood.

<sup>c</sup> Hardwood is counties with mills procuring only hardwood.

State. The numbers in rows to the left and right of those boxed numbers represent wood exported to the other States. Therefore, the sum of the figure for retained wood and the figure for wood exported out of State is the total roundwood production for the State. The numbers in columns either above or below the figures for retained wood represent wood that was imported from other States. The sum of the retained figure and the figure for wood imported from other States represents roundwood receipts or the amount of roundwood processed by mills in a State.

The South Central Region was a net importer of roundwood pulpwood. For both softwood and hardwood combined, imports exceeded exports by 283,731 cords (tables A.20 and A.21). Softwood imports exceeded exports by only 15,893 cords, while hardwood imports exceeded exports by 267,838 cords. The Southeast was a net exporter of pulpwood with softwood and hardwood exports exceeding imports by 195,453 cords. Softwood exports exceeded imports by 73,998 cords, while hardwood exports exceeded imports by 121,455 cords. Southwide, pulpwood receipts, or consumption, exceeded production by 88,278 cords.

## Mills

In 2006, 87 southern pulpmills were operating and drawing wood from the 13 Southern States (fig. 7), the same as in 2005. At the same time, total southern mill pulping capacity increased from 124,567 tons per day in 2005 to 125,093

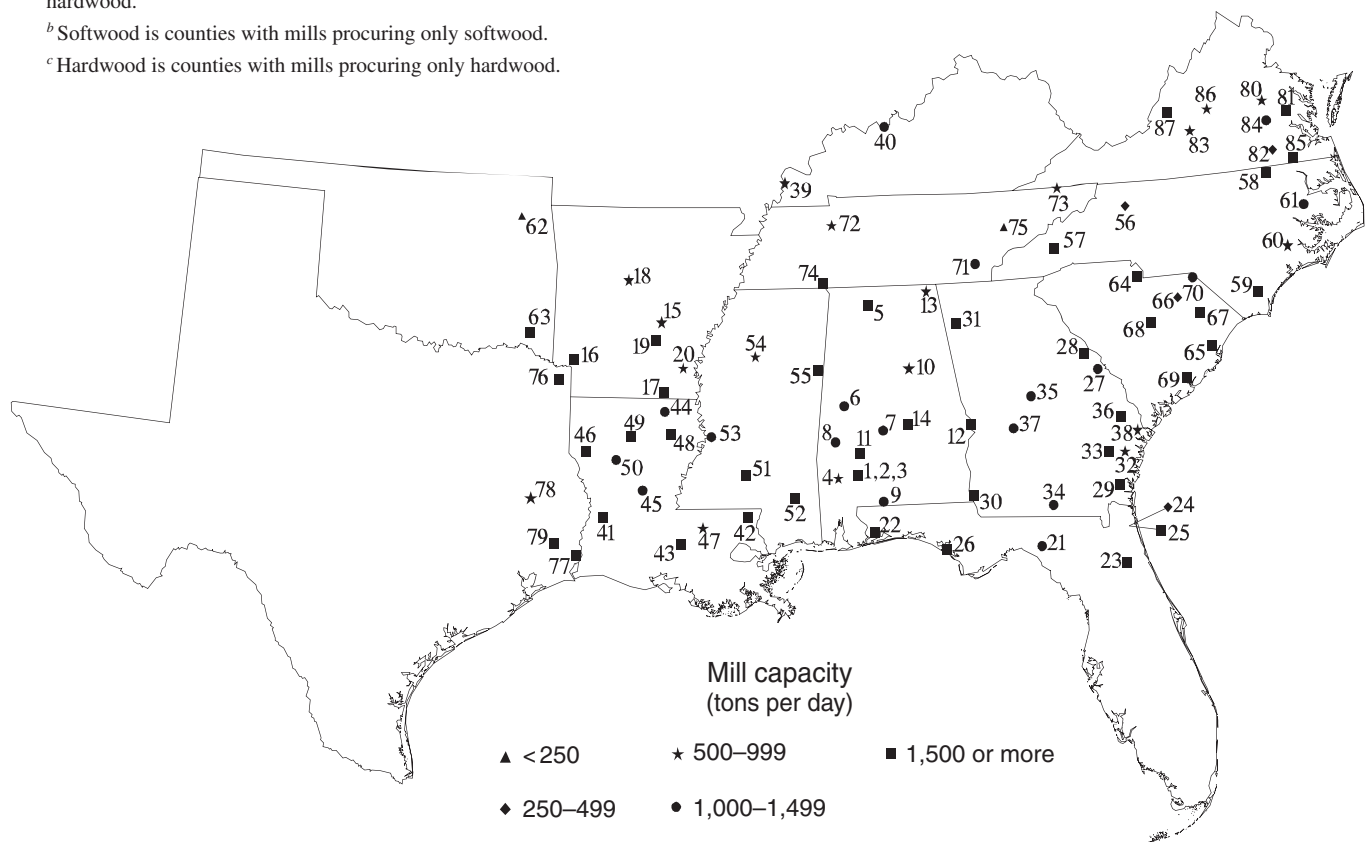


Figure 7—Capacity of southern pulpmills operating and drawing wood from the 13 Southern States, 2006. Numerals are coded on Table A.22.

tons per day in 2006. Southern mills account for more than 70 percent of the Nation's total pulping capacity. Daily capacity of individual mills ranged from 50 tons to 3,600 tons. In 1992, average pulpmill capacity was 1,295 tons per day, increased to 1,386 tons per day in 1999, and then dropped to 1,310 tons per day in 2001. The average daily capacity totaled 1,438 tons per day in 2006, slightly higher than in 2005 and in 2004. The sulfate process dominated the industry in 2006, accounting for 89 percent of mill capacity. Groundwood or other mechanical processes accounted for 6 percent, semichemical 4 percent, and soda and other chemical processes 1 percent (table A.22). These proportions have remained relatively stable over the past few years. Based on 2006 production and mill capacity, and using an average of 350 total operating days, southern pulpmills operated at 92-percent capacity.

Alabama and Georgia continued to lead the South in the number of mills operating with 14 and 12, respectively. Georgia led in pulping capacity with 20,935 tons per day, to

Alabama's 20,032 tons per day (table 3). In addition, three pulpmills outside the Southern Region drew wood from the South in 2006 (table A.23).

### Trends

From 1997 through 2006, southern pulpwood production declined by nearly 15 percent, from 75.9 (200.9 million green tons) to 64.7 million cords (170.9 million green tons) (fig. 8). During the same period, roundwood pulpwood production declined from 54.2 to 46.3 million cords, a 15-percent loss. Between 1997 and 2006, softwood roundwood production declined 7 percent, while hardwood roundwood production declined 28 percent. The production of wood residues declined 15 percent from 21.7 million cords in 1997 to 18.3 million cords in 2006. Wood residues continue to be an important source of fiber for the pulp and paper industry in the South. Wood residues accounted for 28 percent of total pulpwood production in 2006, about the same as in 1997.

**Table 3—Number of pulpmills and pulping capacity, by State, 2006**

State	Mills <i>number</i>	24-hour capacity <i>tons</i>
Alabama	14	20,032
Arkansas	6	7,800
Florida	6	8,580
Georgia	12	20,935
Kentucky	2	2,250
Louisiana	10	16,340
Mississippi	5	7,910
North Carolina	6	7,535
Oklahoma	2	2,750
South Carolina	7	10,550
Tennessee	5	4,875
Texas	4	5,846
Virginia	8	9,690
Total	87	125,093

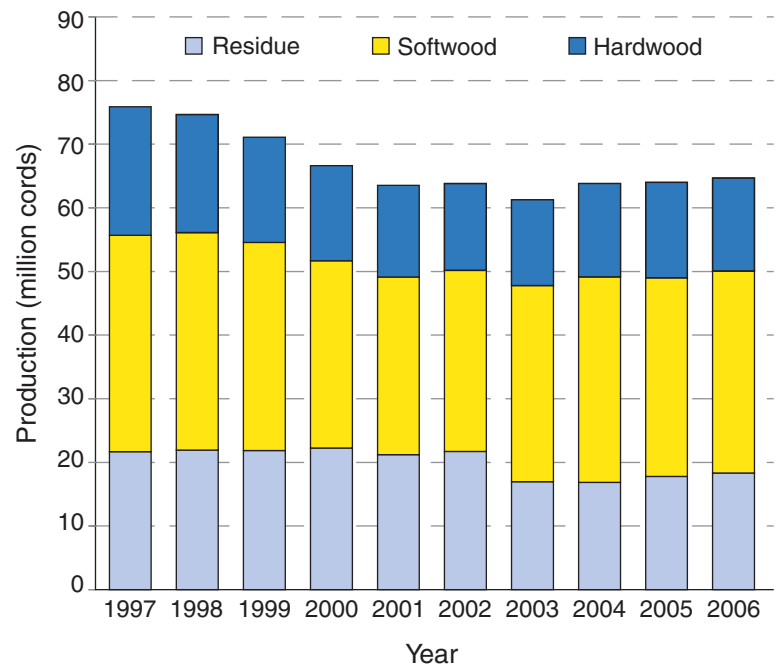


Figure 8—Southern pulpwood production, 1997–2006.

## **Appendix**



**Table A.1—Pulpwood production in the Southeast and South Central regions, 2006**

Region and source of wood	All species			All species		
	Softwood	Hardwood		Softwood	Hardwood	
	<i>standard cords</i>			<i>green tons</i>		
<b>Southeast<sup>a</sup></b>						
Roundwood	21,166,236	15,596,432	5,569,804	57,705,817	42,110,366	15,595,451
Residues	8,658,083	6,556,989	2,101,094	20,948,756	15,769,559	5,179,197
Total	29,824,319	22,153,421	7,670,898	78,654,573	57,879,925	20,774,648
<b>South Central<sup>b</sup></b>						
Roundwood	25,172,491	16,133,644	9,038,847	68,869,612	43,560,840	25,308,772
Residues	9,688,638	7,736,484	1,952,154	23,418,303	18,606,244	4,812,059
Total	34,861,129	23,870,128	10,991,001	92,287,915	62,167,084	30,120,831
<b>Entire South</b>						
Roundwood	46,338,727	31,730,076	14,608,651	126,575,429	85,671,206	40,904,223
Residues	18,346,721	14,293,473	4,053,248	44,367,059	34,375,803	9,991,256
Total	64,685,448	46,023,549	18,661,899	170,942,488	120,047,009	50,895,479

<sup>a</sup> States of Florida, Georgia, North Carolina, South Carolina, and Virginia.

<sup>b</sup> States of Alabama, Arkansas, Kentucky, Louisiana, Mississippi, Oklahoma, Tennessee, and Texas.

**Table A.2—Pulpwood production in the South during 2006, and change since 2005**

State	Change	Pulpwood	
	<i>percent</i>	<i>standard cords</i>	<i>green tons</i>
Alabama	3	10,480,554	27,793,195
Arkansas	-1	4,571,894	12,047,323
Florida	2	4,279,351	11,226,679
Georgia	6	10,238,371	27,100,429
Kentucky	0	664,336	1,737,585
Louisiana	2	6,340,364	16,751,686
Mississippi	3	7,081,706	18,685,015
North Carolina	-3	5,176,140	13,634,403
Oklahoma	-8	652,293	1,717,026
South Carolina	2	6,052,113	15,976,023
Tennessee	-2	1,944,909	5,263,901
Texas	-7	3,125,073	8,292,184
Virginia	-3	4,078,344	10,717,039
All States	1	64,685,448	170,942,488

**Table A.3—Pulpwood production in the South by State and species group, 2006**

State	All species		
	Softwood	Hardwood	
	<i>standard cords</i>		
Alabama	10,480,554	7,416,298	3,064,256
Arkansas	4,571,894	3,107,183	1,464,711
Florida	4,279,351	4,009,516	269,835
Georgia	10,238,371	8,340,185	1,898,186
Kentucky	664,336	63,810	600,526
Louisiana	6,340,364	4,979,973	1,360,391
Mississippi	7,081,706	5,268,506	1,813,200
North Carolina	5,176,140	3,080,439	2,095,701
Oklahoma	652,293	464,015	188,278
South Carolina	6,052,113	4,695,672	1,356,441
Tennessee	1,944,909	596,813	1,348,096
Texas	3,125,073	1,973,530	1,151,543
Virginia	4,078,344	2,027,609	2,050,735
All States	64,685,448	46,023,549	18,661,899

**Table A.4—Roundwood production in the South by State and species group, 2006 and 2005**

State	Change from 2005 <i>percent</i>	2006			2005		
		All species	Softwood	Hardwood	All species	Softwood	Hardwood
		<i>thousand cords</i>					
Alabama	2	7,807.4	5,296.5	2,510.8	7,652.4	5,134.3	2,518.1
Arkansas	-1	3,090.9	1,785.1	1,305.8	3,117.1	1,767.0	1,350.1
Florida	5	3,082.2	2,847.4	234.8	2,934.7	2,668.2	266.5
Georgia	8	7,817.5	6,389.9	1,427.6	7,238.0	6,102.6	1,135.4
Kentucky	-1	317.3	61.4	255.8	320.1	56.9	263.2
Louisiana	1	4,661.4	3,501.8	1,159.6	4,626.6	3,532.0	1,094.6
Mississippi	1	5,018.4	3,411.0	1,607.4	4,946.6	3,254.8	1,691.7
North Carolina	-5	3,389.4	1,885.4	1,504.1	3,575.0	1,796.4	1,778.6
Oklahoma	0	439.8	261.6	178.3	441.7	231.8	209.9
South Carolina	-2	4,386.4	3,253.3	1,133.1	4,496.5	3,344.4	1,152.1
Tennessee	-2	1,578.1	579.1	999.0	1,611.9	551.6	1,060.3
Texas	-14	2,259.0	1,236.8	1,022.2	2,617.6	1,501.8	1,115.8
Virginia	-6	2,490.7	1,220.5	1,270.3	2,637.1	1,285.8	1,351.3
All States	0	46,338.5	31,729.8	14,608.7	46,215.2	31,227.7	14,987.5

Numbers in rows may not sum to totals due to rounding.

**Table A.5—Southern output of wood residues for pulp manufacture by State and species group, 2006 and 2005**

State	Change from 2005 <i>percent</i>	2006			2005		
		All species	Softwood	Hardwood	All species	Softwood	Hardwood
		<i>thousand cords</i>					
Alabama	4	2,673.2	2,119.8	553.4	2,559.6	1,999.3	560.3
Arkansas	-1	1,481.0	1,322.1	158.9	1,500.8	1,366.6	134.2
Florida	-5	1,197.1	1,162.1	35.0	1,254.1	1,197.7	56.4
Georgia	-1	2,420.9	1,950.3	470.6	2,440.1	1,970.6	469.5
Kentucky	0	347.1	2.4	344.7	345.9	1.5	344.4
Louisiana	4	1,679.0	1,478.2	200.8	1,617.3	1,452.9	164.4
Mississippi	7	2,063.3	1,857.5	205.8	1,925.9	1,766.3	159.6
North Carolina	2	1,786.7	1,195.1	591.6	1,756.0	1,254.1	501.9
Oklahoma	-20	212.2	202.2	10.0	265.1	251.9	13.2
South Carolina	15	1,665.7	1,442.4	223.3	1,444.0	1,308.3	135.7
Tennessee	-1	366.8	17.7	349.1	371.8	14.9	356.8
Texas	17	866.1	736.7	129.4	740.8	634.2	106.5
Virginia	2	1,587.6	807.1	780.5	1,557.5	827.9	729.6
All States	3	18,346.7	14,293.5	4,053.2	17,778.9	14,046.2	3,732.7

Numbers in rows may not sum to totals due to rounding.



**Table A.6—Pulpwood production in the South by source of wood, State, year, and number of mills**

Source of wood and State	Year											
	1995	1996	1997	1998	1999	2000	2001	2002	2003	2004	2005	2006
	<i>thousand green tons</i>											
Roundwood												
Alabama	25,790	26,791	27,814	29,344	23,685	21,537	20,575	21,537	19,222	20,535	20,913	21,331
Arkansas	7,515	8,755	8,416	8,908	10,362	8,009	7,582	7,720	7,751	9,134	8,551	8,476
Florida	11,953	10,632	10,610	10,807	9,641	9,802	9,619	9,397	10,096	9,250	7,950	8,345
Georgia	21,903	20,114	21,972	19,394	21,506	20,433	18,218	18,875	20,786	20,558	19,656	21,250
Kentucky	751	688	599	693	675	637	556	637	715	681	891	882
Louisiana	13,394	11,883	11,933	12,527	13,064	11,467	10,748	9,934	11,317	11,998	12,601	12,702
Mississippi	16,615	15,799	17,452	16,924	14,926	12,936	11,637	10,578	11,150	14,320	13,525	13,710
North Carolina	11,826	10,298	12,733	12,247	9,771	9,065	8,688	8,486	9,415	9,982	9,830	9,302
Oklahoma	1,568	1,484	1,610	2,060	1,818	1,272	1,118	1,669	1,466	1,216	1,214	1,206
South Carolina	12,334	11,466	12,305	11,702	12,340	10,501	10,284	10,416	10,706	11,769	12,256	11,957
Tennessee	4,025	4,188	4,479	4,345	4,463	4,891	4,685	4,284	4,463	4,098	4,458	4,361
Texas	7,412	6,347	10,585	7,314	6,019	4,195	5,843	5,720	7,124	7,327	7,179	6,202
Virginia	7,250	7,160	7,927	7,970	6,315	6,571	6,176	5,756	6,764	7,425	7,255	6,852
All States	142,336	135,605	148,435	144,235	134,585	121,316	115,729	115,009	120,974	128,292	126,280	126,575
Residues	50,078	45,887	52,468	53,095	52,900	53,898	51,340	52,603	41,039	40,711	42,982	44,367
Total	192,414	181,492	200,903	197,330	187,485	175,214	167,069	167,612	162,012	169,003	169,262	170,943
Number of mills	105	105	103	103	97	98	94	92	91	89	87	87

**Table A.7—Roundwood pulpwood production in Alabama, 2006**

County <sup>a</sup>	All species			All species		
	Softwood	Hardwood		Softwood	Hardwood	
	<i>standard cords</i>			<i>green tons</i>		
Autauga	75,017	54,892	20,125	204,558	148,208	56,350
Baldwin	167,169	141,604	25,565	453,913	382,331	71,582
Barbour	186,667	139,379	47,288	508,729	376,323	132,406
Bibb	106,281	70,067	36,214	290,580	189,181	101,399
Blount	32,399	971	31,428	90,620	2,622	87,998
Bullock	151,744	128,398	23,346	412,044	346,675	65,369
Butler	199,945	147,249	52,696	545,121	397,572	147,549
Calhoun	58,574	33,343	25,231	160,673	90,026	70,647
Chambers	84,295	36,031	48,264	232,423	97,284	135,139
Cherokee	105,426	85,719	19,707	286,621	231,441	55,180
Chilton	78,005	53,073	24,932	213,107	143,297	69,810
Choctaw	362,881	234,953	127,928	992,571	634,373	358,198
Clarke	568,355	344,657	223,698	1,556,928	930,574	626,354
Clay	109,490	83,813	25,677	298,191	226,295	71,896
Cleburne	120,425	93,605	26,820	327,830	252,734	75,096
Coffee	81,824	56,015	25,809	223,506	151,241	72,265
Colbert	45,271	25,408	19,863	124,218	68,602	55,616
Conecuh	243,149	152,788	90,361	665,539	412,528	253,011
Coosa	144,336	113,206	31,130	392,820	305,656	87,164
Covington	120,276	91,840	28,436	327,589	247,968	79,621
Crenshaw	117,203	80,111	37,092	320,158	216,300	103,858
Cullman	23,151	3,049	20,102	64,518	8,232	56,286
Dale	53,898	30,373	23,525	147,877	82,007	65,870
Dallas	177,696	121,898	55,798	485,359	329,125	156,234
De Kalb	44,080	16,945	27,135	121,730	45,752	75,978
Elmore	82,089	58,525	23,564	223,997	158,018	65,979
Escambia	156,463	117,198	39,265	426,377	316,435	109,942
Etowah	28,856	11,395	17,461	79,658	30,767	48,891
Fayette	73,865	60,499	13,366	200,772	163,347	37,425
Franklin	117,306	82,868	34,438	320,170	223,744	96,426
Geneva	28,704	24,428	4,276	77,929	65,956	11,973
Greene	95,793	63,429	32,364	261,877	171,258	90,619
Hale	100,426	63,679	36,747	274,825	171,933	102,892
Henry	68,342	51,504	16,838	186,207	139,061	47,146
Houston	39,613	29,702	9,911	107,946	80,195	27,751
Jackson	65,885	15,441	50,444	182,934	41,691	141,243
Jefferson	32,861	25,409	7,452	89,470	68,604	20,866
Lamar	66,470	51,710	14,760	180,945	139,617	41,328
Lauderdale	30,681	9,510	21,171	84,956	25,677	59,279
Lawrence	37,064	11,627	25,437	102,617	31,393	71,224
Lee	75,680	56,733	18,947	206,231	153,179	53,052
Limestone	17,441	3,845	13,596	48,451	10,382	38,069
Lowndes	82,611	60,116	22,495	225,299	162,313	62,986
Macon	79,070	61,260	17,810	215,270	165,402	49,868
Madison	24,739	7,474	17,265	68,522	20,180	48,342
Marengo	311,894	191,702	120,192	854,133	517,595	336,538
Marion	133,861	101,849	32,012	364,626	274,992	89,634
Marshall	19,168	2,224	16,944	53,448	6,005	47,443

*continued*

**Table A.7—Roundwood pulpwood production in Alabama, 2006 (continued)**

County <sup>a</sup>	All species			All species		
	Softwood	Hardwood		Softwood	Hardwood	
	<i>standard cords</i>			<i>green tons</i>		
Mobile	155,050	104,650	50,400	423,675	282,555	141,120
Monroe	316,594	216,189	100,405	864,844	583,710	281,134
Montgomery	102,116	77,169	24,947	278,208	208,356	69,852
Morgan	24,880	3,965	20,915	69,268	10,706	58,562
Perry	99,337	67,946	31,391	271,349	183,454	87,895
Pickens	130,299	43,961	86,338	360,441	118,695	241,746
Pike	105,791	71,929	33,862	289,022	194,208	94,814
Randolph	53,534	45,059	8,475	145,389	121,659	23,730
Russell	129,326	107,586	21,740	351,354	290,482	60,872
St. Clair	45,817	19,690	26,127	126,319	53,163	73,156
Shelby	47,598	33,307	14,291	129,944	89,929	40,015
Sumter	206,157	142,853	63,304	562,954	385,703	177,251
Talladega	80,465	67,206	13,259	218,581	181,456	37,125
Tallapoosa	147,595	106,095	41,500	402,657	286,457	116,200
Tuscaloosa	80,156	51,282	28,874	219,308	138,461	80,847
Walker	150,487	113,104	37,383	410,053	305,381	104,672
Washington	272,612	192,893	79,719	744,024	520,811	223,213
Wilcox	325,929	242,132	83,797	888,388	653,756	234,632
Winston	107,183	87,988	19,195	291,314	237,568	53,746
All counties	7,807,365	5,296,518	2,510,847	21,330,975	14,300,601	7,030,374

<sup>a</sup> Counties with no pulpwood production are omitted.

**Table A.8—Roundwood pulpwood production in Arkansas, 2006**

County <sup>a</sup>	All species			All species		
	Softwood	Hardwood		Softwood	Hardwood	
	<i>standard cords</i>			<i>green tons</i>		
Arkansas	26,176	7,412	18,764	72,551	20,012	52,539
Ashley	191,188	119,472	71,716	523,379	322,574	200,805
Baxter	1,193	0	1,193	3,340	0	3,340
Benton	10	10	0	27	27	0
Boone	145	0	145	406	0	406
Bradley	122,410	63,888	58,522	336,360	172,498	163,862
Calhoun	60,899	23,364	37,535	168,181	63,083	105,098
Carroll	11	0	11	31	0	31
Chicot	15,284	4,887	10,397	42,307	13,195	29,112
Clark	153,257	57,302	95,955	423,389	154,715	268,674
Clay	655	11	644	1,833	30	1,803
Cleburne	46,256	33,769	12,487	126,140	91,176	34,964
Cleveland	64,975	22,363	42,612	179,694	60,380	119,314
Columbia	79,173	34,231	44,942	218,262	92,424	125,838
Conway	56,574	26,948	29,626	155,713	72,760	82,953
Craighead	1,400	0	1,400	3,920	0	3,920
Crawford	357	357	0	964	964	0
Cross	647	10	637	1,811	27	1,784
Dallas	97,091	55,902	41,189	266,264	150,935	115,329
Desha	31,597	861	30,736	88,386	2,325	86,061
Drew	189,331	145,975	43,356	515,530	394,133	121,397
Faulkner	9,367	4,217	5,150	25,806	11,386	14,420
Franklin	3,236	1,580	1,656	8,903	4,266	4,637
Garland	16,660	12,850	3,810	45,363	34,695	10,668
Grant	183,074	150,491	32,583	497,558	406,326	91,232
Greene	9	0	9	25	0	25
Hempstead	68,101	37,606	30,495	186,922	101,536	85,386
Hot Spring	50,230	39,449	10,781	136,699	106,512	30,187
Howard	126,981	84,790	42,191	347,068	228,933	118,135
Independence	25,618	5,794	19,824	71,151	15,644	55,507
Izard	9	9	0	24	24	0
Jackson	772	61	711	2,156	165	1,991
Jefferson	48,369	25,735	22,634	132,860	69,485	63,375
Johnson	25,010	5,607	19,403	69,467	15,139	54,328
Lafayette	85,204	41,362	43,842	234,435	111,677	122,758
Lee	198	0	198	554	0	554
Lincoln	78,805	19,437	59,368	218,710	52,480	166,230
Little River	66,841	28,319	38,522	184,323	76,461	107,862
Logan	13,687	9,261	4,426	37,398	25,005	12,393
Lonoke	38,015	32,924	5,091	103,150	88,895	14,255
Madison	3,466	38	3,428	9,701	103	9,598
Marion	434	10	424	1,214	27	1,187
Miller	55,455	20,177	35,278	153,256	54,478	98,778
Monroe	7,717	0	7,717	21,608	0	21,608
Montgomery	8,411	4,242	4,169	23,126	11,453	11,673
Nevada	77,521	41,444	36,077	212,915	111,899	101,016
Newton	1,062	71	991	2,967	192	2,775

*continued*

**Table A.8—Roundwood pulpwood production in Arkansas, 2006 (continued)**

County <sup>a</sup>	All species			All species		
	Softwood	Hardwood		Softwood	Hardwood	
	<i>standard cords</i>			<i>green tons</i>		
Ouachita	75,585	37,373	38,212	207,901	100,907	106,994
Perry	48,054	38,941	9,113	130,657	105,141	25,516
Phillips	7,693	2,256	5,437	21,315	6,091	15,224
Pike	119,306	102,425	16,881	323,815	276,548	47,267
Poinsett	8	8	0	22	22	0
Polk	60,563	42,189	18,374	165,357	113,910	51,447
Pope	25,056	15,509	9,547	68,606	41,874	26,732
Prairie	22,119	19,695	2,424	59,964	53,177	6,787
Pulaski	19,913	13,978	5,935	54,359	37,741	16,618
St. Francis	3,570	118	3,452	9,985	319	9,666
Saline	68,901	60,932	7,969	186,829	164,516	22,313
Scott	44,737	29,228	15,509	122,341	78,916	43,425
Searcy	5,306	467	4,839	14,810	1,261	13,549
Sebastian	869	869	0	2,346	2,346	0
Sevier	94,034	69,431	24,603	256,352	187,464	68,888
Sharp	133	133	0	359	359	0
Stone	20,461	6,533	13,928	56,637	17,639	38,998
Union	198,381	90,105	108,276	546,457	243,284	303,173
Van Buren	32,385	16,971	15,414	88,981	45,822	43,159
Washington	28	0	28	78	0	78
White	62,615	50,963	11,652	170,226	137,600	32,626
Woodruff	514	514	0	1,388	1,388	0
Yell	47,749	24,199	23,550	131,277	65,337	65,940
All counties	3,090,861	1,785,073	1,305,788	8,475,909	4,819,701	3,656,208

<sup>a</sup> Counties with no pulpwood production are omitted.

**Table A.9—Roundwood pulpwood production in Florida, 2006**

County <sup>a</sup>	All species			All species		
	Softwood	Hardwood		Softwood	Hardwood	
	<i>standard cords</i>			<i>green tons</i>		
Alachua	75,127	59,359	15,768	204,419	160,269	44,150
Baker	95,589	93,950	1,639	258,254	253,665	4,589
Bay	183,582	171,896	11,686	496,840	464,119	32,721
Bradford	23,952	21,013	2,939	64,964	56,735	8,229
Brevard	58	55	3	157	149	8
Broward	27	27	0	73	73	0
Calhoun	74,463	70,351	4,112	201,462	189,948	11,514
Charlotte	280	280	0	756	756	0
Citrus	429	418	11	1,160	1,129	31
Clay	86,674	78,568	8,106	234,831	212,134	22,697
Collier	19	19	0	51	51	0
Columbia	89,018	86,354	2,664	240,615	233,156	7,459
Dade	18	18	0	49	49	0
Dixie	79,027	68,395	10,632	214,437	184,667	29,770
Duval	83,219	78,619	4,600	225,151	212,271	12,880
Escambia	61,705	57,320	4,385	167,042	154,764	12,278
Flagler	72,619	59,850	12,769	197,348	161,595	35,753
Franklin	9,911	9,911	0	26,760	26,760	0
Gadsden	48,718	37,753	10,965	132,635	101,933	30,702
Gilchrist	23,850	22,797	1,053	64,500	61,552	2,948
Gulf	181,928	177,921	4,007	491,607	480,387	11,220
Hamilton	80,650	79,131	1,519	217,907	213,654	4,253
Hardee	85	85	0	230	230	0
Hendry	174	174	0	470	470	0
Hernando	180	60	120	498	162	336
Hillsborough	977	0	977	2,736	0	2,736
Holmes	44,422	41,321	3,101	120,250	111,567	8,683
Jackson	90,030	75,106	14,924	244,573	202,786	41,787
Jefferson	64,410	63,652	758	173,982	171,860	2,122
Lafayette	57,863	57,847	16	156,232	156,187	45
Lake	8,226	2,608	5,618	22,772	7,042	15,730
Leon	13,949	12,663	1,286	37,791	34,190	3,601
Levy	129,070	117,258	11,812	349,671	316,597	33,074
Liberty	19,428	17,213	2,215	52,677	46,475	6,202
Madison	89,804	89,767	37	242,475	242,371	104
Marion	59,189	50,905	8,284	160,639	137,444	23,195
Martin	70	70	0	189	189	0
Monroe	10	0	10	28	0	28
Nassau	206,863	203,795	3,068	558,837	550,247	8,590
Okaloosa	50,792	46,757	4,035	137,542	126,244	11,298
Orange	1,036	613	423	2,839	1,655	1,184
Osceola	1,136	929	207	3,088	2,508	580
Pasco	762	419	343	2,091	1,131	960
Polk	1,097	309	788	3,040	834	2,206
Putnam	133,335	107,019	26,316	362,636	288,951	73,685
St. Johns	84,224	64,327	19,897	229,395	173,683	55,712
St. Lucie	9	9	0	24	24	0
Santa Rosa	87,231	82,965	4,266	235,951	224,006	11,945

*continued*

**Table A.9—Roundwood pulpwood production in Florida, 2006 (continued)**

County <sup>a</sup>	All species			All species		
	Softwood	Hardwood		Softwood	Hardwood	
	<i>standard cords</i>			<i>green tons</i>		
Sarasota	12	0	12	34	0	34
Sumter	10,641	178	10,463	29,777	481	29,296
Suwannee	106,091	104,106	1,985	286,644	281,086	5,558
Taylor	237,203	237,091	112	640,460	640,146	314
Union	22,686	20,157	2,529	61,505	54,424	7,081
Volusia	48,268	45,908	2,360	130,560	123,952	6,608
Wakulla	25,205	25,139	66	68,060	67,875	185
Walton	99,247	97,390	1,857	268,153	262,953	5,200
Washington	117,636	107,556	10,080	318,625	290,401	28,224
All counties	3,082,224	2,847,401	234,823	8,345,492	7,687,987	657,505

<sup>a</sup> Counties with no pulpwood production are omitted.

**Table A.10—Roundwood pulpwood production in Georgia, 2006**

County <sup>a</sup>	All species			All species		
	Softwood	Hardwood		Softwood	Hardwood	
	<i>standard cords</i>			<i>green tons</i>		
Appling	189,189	174,039	15,150	512,325	469,905	42,420
Atkinson	34,584	24,596	9,988	94,375	66,409	27,966
Bacon	94,961	88,632	6,329	257,027	239,306	17,721
Baker	13,254	12,580	674	35,853	33,966	1,887
Baldwin	41,465	39,143	2,322	112,188	105,686	6,502
Banks	6,896	627	6,269	19,246	1,693	17,553
Barrow	4,784	1,951	2,833	13,200	5,268	7,932
Bartow	60,073	47,439	12,634	163,460	128,085	35,375
Ben Hill	5,887	5,422	465	15,941	14,639	1,302
Berrien	11,410	3,826	7,584	31,565	10,330	21,235
Bibb	26,733	16,873	9,860	73,165	45,557	27,608
Bleckley	51,709	44,215	7,494	140,364	119,381	20,983
Brantley	99,093	90,153	8,940	268,445	243,413	25,032
Brooks	18,976	18,976	0	51,235	51,235	0
Bryan	55,164	46,211	8,953	149,838	124,770	25,068
Bulloch	113,952	93,057	20,895	309,760	251,254	58,506
Burke	222,291	175,653	46,638	604,849	474,263	130,586
Butts	15,663	13,309	2,354	42,525	35,934	6,591
Calhoun	23,548	22,870	678	63,647	61,749	1,898
Camden	136,589	129,139	7,450	369,535	348,675	20,860
Candler	48,393	41,559	6,834	131,344	112,209	19,135
Carroll	58,727	33,326	25,401	161,103	89,980	71,123
Catoosa	4,520	1,814	2,706	12,475	4,898	7,577
Charlton	114,774	111,504	3,270	310,217	301,061	9,156
Chatham	37,882	33,936	3,946	102,676	91,627	11,049
Chattahoochee	22,960	15,250	7,710	62,763	41,175	21,588
Chattooga	35,798	29,090	6,708	97,325	78,543	18,782
Cherokee	41,024	29,934	11,090	111,874	80,822	31,052
Clarke	2,014	1,628	386	5,477	4,396	1,081
Clay	38,213	36,182	2,031	103,378	97,691	5,687
Clayton	2,356	2,121	235	6,385	5,727	658
Clinch	154,405	122,071	32,334	420,127	329,592	90,535
Cobb	6,164	4,880	1,284	16,771	13,176	3,595
Coffee	79,891	76,046	3,845	216,090	205,324	10,766
Colquitt	38,678	36,807	1,871	104,618	99,379	5,239
Columbia	17,532	9,785	7,747	48,112	26,420	21,692
Cook	5,059	2,794	2,265	13,886	7,544	6,342
Coweta	26,342	23,284	3,058	71,429	62,867	8,562
Crawford	50,438	41,128	9,310	137,114	111,046	26,068
Crisp	17,714	14,149	3,565	48,184	38,202	9,982
Dade	2,505	310	2,195	6,983	837	6,146
Dawson	6,202	4,268	1,934	16,939	11,524	5,415
Decatur	55,107	48,519	6,588	149,447	131,001	18,446
De Kalb	2,163	1,419	744	5,914	3,831	2,083
Dodge	121,202	103,247	17,955	329,041	278,767	50,274
Dooly	42,621	35,199	7,422	115,819	95,037	20,782
Dougherty	34,735	17,248	17,487	95,534	46,570	48,964
Douglas	9,017	6,660	2,357	24,582	17,982	6,600

*continued*



**Table A.10—Roundwood pulpwood production in Georgia, 2006 (continued)**

County <sup>a</sup>	All			All		
	species	Softwood	Hardwood	species	Softwood	Hardwood
	<i>standard cords</i>			<i>green tons</i>		
Early	80,088	72,747	7,341	216,972	196,417	20,555
Echols	31,288	27,687	3,601	84,838	74,755	10,083
Effingham	135,962	109,180	26,782	369,776	294,786	74,990
Elbert	21,225	2,795	18,430	59,151	7,547	51,604
Emanuel	178,916	158,980	19,936	485,067	429,246	55,821
Evans	24,448	19,830	4,618	66,471	53,541	12,930
Fannin	8,095	4,867	3,228	22,179	13,141	9,038
Fayette	1,388	393	995	3,847	1,061	2,786
Floyd	109,954	78,582	31,372	300,013	212,171	87,842
Forsyth	8,288	3,710	4,578	22,835	10,017	12,818
Franklin	7,741	844	6,897	21,591	2,279	19,312
Fulton	11,181	7,849	3,332	30,522	21,192	9,330
Gilmer	30,461	18,579	11,882	83,433	50,163	33,270
Glascocok	11,322	7,372	3,950	30,964	19,904	11,060
Glynn	112,068	97,266	14,802	304,064	262,618	41,446
Gordon	38,088	34,442	3,646	103,202	92,993	10,209
Grady	32,310	27,107	5,203	87,757	73,189	14,568
Greene	28,621	19,565	9,056	78,183	52,826	25,357
Gwinnett	18,753	9,696	9,057	51,539	26,179	25,360
Habersham	25,543	13,292	12,251	70,191	35,888	34,303
Hall	10,676	3,222	7,454	29,570	8,699	20,871
Hancock	87,675	73,343	14,332	238,156	198,026	40,130
Haralson	36,917	33,306	3,611	100,037	89,926	10,111
Harris	75,739	62,268	13,471	205,843	168,124	37,719
Hart	7,861	2,232	5,629	21,787	6,026	15,761
Heard	34,855	33,619	1,236	94,232	90,771	3,461
Henry	21,196	13,280	7,916	58,021	35,856	22,165
Houston	47,322	39,625	7,697	128,540	106,988	21,552
Irwin	14,581	10,224	4,357	39,805	27,605	12,200
Jackson	8,297	2,505	5,792	22,982	6,764	16,218
Jasper	41,555	29,106	12,449	113,443	78,586	34,857
Jeff Davis	102,971	65,824	37,147	281,737	177,725	104,012
Jefferson	82,433	65,877	16,556	224,225	177,868	46,357
Jenkins	95,400	71,243	24,157	259,996	192,356	67,640
Johnson	110,352	95,991	14,361	299,387	259,176	40,211
Jones	55,891	47,756	8,135	151,719	128,941	22,778
Lamar	28,434	10,644	17,790	78,551	28,739	49,812
Lanier	8,622	7,773	849	23,364	20,987	2,377
Laurens	196,538	166,924	29,614	533,614	450,695	82,919
Lee	25,436	19,605	5,831	69,261	52,934	16,327
Liberty	87,288	72,242	15,046	237,182	195,053	42,129
Lincoln	28,001	22,457	5,544	76,157	60,634	15,523
Long	123,998	115,463	8,535	335,648	311,750	23,898
Lowndes	20,711	15,763	4,948	56,414	42,560	13,854
Lumpkin	2,174	1,589	585	5,928	4,290	1,638
Macon	55,129	53,151	1,978	149,046	143,508	5,538
Madison	4,348	140	4,208	12,160	378	11,782
Marion	95,126	81,664	13,462	258,187	220,493	37,694

*continued*

**Table A.10—Roundwood pulpwood production in Georgia, 2006 (continued)**

County <sup>a</sup>	All species	Softwood	Hardwood	All species	Softwood	Hardwood
	<i>standard cords</i>			<i>green tons</i>		
McDuffie	24,130	14,465	9,665	66,118	39,056	27,062
McIntosh	81,197	71,325	9,872	220,220	192,578	27,642
Meriwether	65,285	51,581	13,704	177,640	139,269	38,371
Miller	16,499	15,811	688	44,616	42,690	1,926
Mitchell	33,713	31,420	2,293	91,254	84,834	6,420
Monroe	51,470	37,489	13,981	140,367	101,220	39,147
Montgomery	75,867	64,373	11,494	205,990	173,807	32,183
Morgan	23,156	10,747	12,409	63,762	29,017	34,745
Murray	23,720	16,209	7,511	64,795	43,764	21,031
Muscogee	5,936	4,569	1,367	16,164	12,336	3,828
Newton	14,377	11,212	3,165	39,134	30,272	8,862
Oconee	2,855	1,660	1,195	7,828	4,482	3,346
Oglethorpe	23,904	18,534	5,370	65,078	50,042	15,036
Paulding	74,485	50,826	23,659	203,475	137,230	66,245
Peach	7,872	7,180	692	21,324	19,386	1,938
Pickens	32,002	29,442	2,560	86,661	79,493	7,168
Pierce	50,287	39,159	11,128	136,887	105,729	31,158
Pike	8,970	8,348	622	24,282	22,540	1,742
Polk	57,176	48,393	8,783	155,253	130,661	24,592
Pulaski	39,813	32,290	7,523	108,247	87,183	21,064
Putnam	43,201	30,489	12,712	117,914	82,320	35,594
Quitman	43,841	38,642	5,199	118,890	104,333	14,557
Rabun	15,158	4,445	10,713	41,998	12,002	29,996
Randolph	95,746	88,935	6,811	259,196	240,125	19,071
Richmond	24,159	14,114	10,045	66,234	38,108	28,126
Rockdale	1,427	1,339	88	3,861	3,615	246
Schley	35,529	31,675	3,854	96,314	85,523	10,791
Screven	107,734	78,856	28,878	293,769	212,911	80,858
Seminole	13,352	12,115	1,237	36,175	32,711	3,464
Spalding	2,383	1,990	393	6,473	5,373	1,100
Stephens	15,056	3,246	11,810	41,832	8,764	33,068
Stewart	124,765	98,743	26,022	339,468	266,606	72,862
Sumter	90,586	87,512	3,074	244,889	236,282	8,607
Talbot	80,941	70,317	10,624	219,603	189,856	29,747
Taliaferro	15,018	7,917	7,101	41,259	21,376	19,883
Tattnall	122,729	110,072	12,657	332,634	297,194	35,440
Taylor	91,088	79,993	11,095	247,047	215,981	31,066
Telfair	50,453	41,038	9,415	137,165	110,803	26,362
Terrell	36,198	33,165	3,033	98,038	89,546	8,492
Thomas	54,820	51,728	3,092	148,324	139,666	8,658
Tift	6,394	1,678	4,716	17,736	4,531	13,205
Toombs	126,244	105,741	20,503	342,909	285,501	57,408
Towns	7,531	389	7,142	21,048	1,050	19,998
Treutlen	61,841	53,705	8,136	167,785	145,004	22,781
Troup	53,348	28,922	24,426	146,482	78,089	68,393
Turner	11,232	9,004	2,228	30,549	24,311	6,238
Twiggs	91,162	78,159	13,003	247,437	211,029	36,408
Union	11,320	598	10,722	31,637	1,615	30,022

*continued*

**Table A.10—Roundwood pulpwood production in Georgia, 2006 (continued)**

County <sup>a</sup>	All species			All species		
	Softwood	Hardwood		Softwood	Hardwood	
	<i>standard cords</i>			<i>green tons</i>		
Upton	49,313	38,702	10,611	134,206	104,495	29,711
Walker	29,175	23,082	6,093	79,381	62,321	17,060
Walton	8,262	4,450	3,812	22,689	12,015	10,674
Ware	146,355	128,688	17,667	396,926	347,458	49,468
Warren	42,226	33,386	8,840	114,894	90,142	24,752
Washington	124,851	108,462	16,389	338,736	292,847	45,889
Wayne	179,946	171,434	8,512	486,706	462,872	23,834
Webster	60,624	53,788	6,836	164,369	145,228	19,141
Wheeler	57,770	46,426	11,344	157,113	125,350	31,763
White	956	908	48	2,586	2,452	134
Whitfield	24,743	18,414	6,329	67,439	49,718	17,721
Wilcox	35,734	30,650	5,084	96,990	82,755	14,235
Wilkes	54,527	43,903	10,624	148,285	118,538	29,747
Wilkinson	97,432	62,648	34,784	266,545	169,150	97,395
Worth	31,661	30,914	747	85,560	83,468	2,092
All counties	7,817,468	6,389,903	1,427,565	21,249,923	17,252,740	3,997,183

<sup>a</sup> Counties with no pulpwood production are omitted.

**Table A.11—Roundwood pulpwood production in Kentucky, 2006**

County <sup>a</sup>	All species			All species		
	Softwood	Hardwood		Softwood	Hardwood	
	<i>standard cords</i>			<i>green tons</i>		
Ballard	5,634	1,295	4,339	15,646	3,497	12,149
Boone	34	34	0	92	92	0
Breckinridge	14,999	5	14,994	41,997	14	41,983
Bullitt	30	30	0	81	81	0
Butler	1,923	152	1,771	5,369	410	4,959
Caldwell	8,017	4,005	4,012	22,048	10,814	11,234
Calloway	5,054	4,034	1,020	13,748	10,892	2,856
Carlisle	11,908	171	11,737	33,326	462	32,864
Christian	263	263	0	710	710	0
Clark	2,773	0	2,773	7,764	0	7,764
Crittenden	11,969	8,496	3,473	32,663	22,939	9,724
Daviess	163	163	0	440	440	0
Edmonson	1,635	0	1,635	4,578	0	4,578
Fulton	2,263	0	2,263	6,336	0	6,336
Graves	9,810	3,956	5,854	27,072	10,681	16,391
Grayson	3,183	788	2,395	8,834	2,128	6,706
Greenup	42,392	672	41,720	118,630	1,814	116,816
Hancock	55	55	0	149	149	0
Hickman	2,292	0	2,292	6,418	0	6,418
Hopkins	1,802	1,040	762	4,942	2,808	2,134
Jackson	847	107	740	2,361	289	2,072
Knox	34,601	0	34,601	96,883	0	96,883
Laurel	48,934	4,458	44,476	136,570	12,037	124,533
Lewis	1,700	362	1,338	4,723	977	3,746
Livingston	13,641	6,785	6,856	37,517	18,320	19,197
Lyon	22,032	17,340	4,692	59,956	46,818	13,138
Marshall	1,158	0	1,158	3,242	0	3,242
McCracken	971	0	971	2,719	0	2,719
McCreary	3,502	0	3,502	9,806	0	9,806
McLean	573	24	549	1,602	65	1,537
Muhlenberg	9,728	5,342	4,386	26,704	14,423	12,281
Ohio	45,627	716	44,911	127,684	1,933	125,751
Trigg	1,424	0	1,424	3,987	0	3,987
Union	381	381	0	1,029	1,029	0
Whitley	5,806	618	5,188	16,195	1,669	14,526
Wolfe	137	137	0	370	370	0
All counties	317,261	61,429	255,832	882,191	165,861	716,330

<sup>a</sup> Counties with no pulpwood production are omitted.

**Table A.12—Roundwood pulpwood production in Louisiana, 2006**

Parish <sup>a</sup>	All species			All species		
	Softwood	Hardwood		Softwood	Hardwood	
	<i>standard cords</i>			<i>green tons</i>		
Acadia	1,580	1,530	50	4,271	4,131	140
Allen	174,385	151,516	22,869	473,126	409,093	64,033
Ascension	16,665	409	16,256	46,621	1,104	45,517
Assumption	1,007	7	1,000	2,819	19	2,800
Avoyelles	6,246	5,877	369	16,901	15,868	1,033
Beauregard	334,810	296,008	38,802	907,868	799,222	108,646
Bienville	185,464	147,844	37,620	504,515	399,179	105,336
Bossier	122,486	47,468	75,018	338,214	128,164	210,050
Caddo	49,679	24,044	25,635	136,697	64,919	71,778
Calcasieu	94,871	94,769	102	256,162	255,876	286
Caldwell	84,598	77,522	7,076	229,122	209,309	19,813
Cameron	9	0	9	25	0	25
Catahoula	27,063	23,747	3,316	73,402	64,117	9,285
Claiborne	41,403	28,106	13,297	113,118	75,886	37,232
Concordia	6,210	10	6,200	17,387	27	17,360
De Soto	243,569	192,819	50,750	662,711	520,611	142,100
East Baton Rouge	25,057	8,359	16,698	69,323	22,569	46,754
East Carroll	8,379	6,306	2,073	22,830	17,026	5,804
East Feliciana	44,047	28,745	15,302	120,458	77,612	42,846
Evangeline	49,305	47,247	2,058	133,329	127,567	5,762
Franklin	8,475	3,446	5,029	23,385	9,304	14,081
Grant	92,603	78,001	14,602	251,489	210,603	40,886
Iberia	205	85	120	566	230	336
Iberville	10,541	10	10,531	29,514	27	29,487
Jackson	219,967	154,930	65,037	600,415	418,311	182,104
Jefferson	212	75	137	587	203	384
Jefferson Davis	7,513	7,470	43	20,289	20,169	120
Lafayette	151	43	108	418	116	302
Lafourche	910	0	910	2,548	0	2,548
LaSalle	160,781	133,995	26,786	436,788	361,787	75,001
Lincoln	56,034	34,984	21,050	153,397	94,457	58,940
Livingston	102,998	76,034	26,964	280,791	205,292	75,499
Madison	9,153	73	9,080	25,621	197	25,424
Morehouse	74,520	44,607	29,913	204,195	120,439	83,756
Natchitoches	219,700	182,484	37,216	596,912	492,707	104,205
Ouachita	89,694	47,325	42,369	246,411	127,778	118,633
Pointe Coupee	16,242	0	16,242	45,478	0	45,478
Rapides	138,648	116,041	22,607	376,611	313,311	63,300
Red River	80,507	62,384	18,123	219,181	168,437	50,744
Richland	8,228	1,208	7,020	22,918	3,262	19,656
Sabine	330,455	283,448	47,007	896,930	765,310	131,620
St. Bernard	23	23	0	62	62	0
St. Charles	4,392	74	4,318	12,290	200	12,090
St. Helena	69,159	53,342	15,817	188,311	144,023	44,288
St. James	9,397	0	9,397	26,312	0	26,312
St. John the Baptist	20	10	10	55	27	28
St. Landry	3,691	559	3,132	10,279	1,509	8,770
St. Martin	2,111	42	2,069	5,906	113	5,793

*continued*

**Table A.12—Roundwood pulpwood production in Louisiana, 2006 (continued)**

Parish <sup>a</sup>	All species			All species		
	Softwood	Hardwood		Softwood	Hardwood	
	<i>standard cords</i>			<i>green tons</i>		
St. Mary	9	9	0	24	24	0
St. Tammany	108,708	95,623	13,085	294,820	258,182	36,638
Tangipahoa	107,870	63,600	44,270	295,676	171,720	123,956
Tensas	7,948	10	7,938	22,253	27	22,226
Terrebonne	526	0	526	1,473	0	1,473
Union	208,315	94,964	113,351	573,786	256,403	317,383
Vermilion	231	231	0	624	624	0
Vernon	311,655	275,300	36,355	845,104	743,310	101,794
Washington	169,582	155,788	13,794	459,251	420,628	38,623
Webster	79,936	34,100	45,836	220,411	92,070	128,341
West Baton Rouge	14,909	97	14,812	41,736	262	41,474
West Carroll	4,482	1,575	2,907	12,393	4,253	8,140
West Feliciana	24,692	7,947	16,745	68,343	21,457	46,886
Winn	389,343	309,500	79,843	1,059,210	835,650	223,560
All parishes	4,661,369	3,501,770	1,159,599	12,701,662	9,454,783	3,246,879

<sup>a</sup> Parishes with no pulpwood production are omitted.

**Table A.13—Roundwood pulpwood production in Mississippi, 2006**

County <sup>a</sup>	All species			All species		
	Softwood	Hardwood		Softwood	Hardwood	
	<i>standard cords</i>			<i>green tons</i>		
Adams	20,367	6,555	13,812	56,373	17,699	38,674
Alcorn	35,270	25,224	10,046	96,234	68,105	28,129
Amite	160,168	105,887	54,281	437,882	285,895	151,987
Attala	80,677	60,666	20,011	219,829	163,798	56,031
Benton	24,534	13,282	11,252	67,367	35,861	31,506
Bolivar	6,919	10	6,909	19,372	27	19,345
Calhoun	51,857	48,686	3,171	140,331	131,452	8,879
Carroll	49,946	27,706	22,240	137,078	74,806	62,272
Chickasaw	21,917	21,497	420	59,218	58,042	1,176
Choctaw	96,427	88,034	8,393	261,192	237,692	23,500
Claiborne	37,208	15,256	21,952	102,657	41,191	61,466
Clarke	105,942	70,499	35,443	289,587	190,347	99,240
Clay	22,261	21,889	372	60,142	59,100	1,042
Coahoma	3,950	133	3,817	11,047	359	10,688
Copiah	103,885	74,009	29,876	283,477	199,824	83,653
Covington	52,090	43,665	8,425	141,486	117,896	23,590
De Soto	7,976	6,953	1,023	21,637	18,773	2,864
Forrest	90,937	88,874	2,063	245,736	239,960	5,776
Franklin	63,532	32,495	31,037	174,641	87,737	86,904
George	26,027	25,923	104	70,283	69,992	291
Greene	136,734	131,910	4,824	369,664	356,157	13,507
Grenada	13,214	8,038	5,176	36,196	21,703	14,493
Hancock	65,642	65,465	177	177,252	176,756	496
Harrison	59,562	59,489	73	160,824	160,620	204
Hinds	79,584	35,260	44,324	219,309	95,202	124,107
Holmes	50,971	20,810	30,161	140,638	56,187	84,451
Humphreys	6,519	31	6,488	18,250	84	18,166
Issaquena	34,942	53	34,889	97,832	143	97,689
Itawamba	71,263	49,602	21,661	194,576	133,925	60,651
Jackson	13,209	13,072	137	35,678	35,294	384
Jasper	43,215	31,875	11,340	117,815	86,063	31,752
Jefferson	48,034	27,212	20,822	131,774	73,472	58,302
Jefferson Davis	44,206	44,093	113	119,367	119,051	316
Jones	99,046	79,111	19,935	269,418	213,600	55,818
Kemper	33,653	16,738	16,915	92,555	45,193	47,362
Lafayette	12,944	9,183	3,761	35,325	24,794	10,531
Lamar	106,124	99,883	6,241	287,159	269,684	17,475
Lauderdale	214,063	62,263	151,800	593,150	168,110	425,040
Lawrence	48,765	42,713	6,052	132,271	115,325	16,946
Leake	63,083	52,843	10,240	171,348	142,676	28,672
Lee	14,941	12,765	2,176	40,559	34,466	6,093
Leflore	5,800	0	5,800	16,240	0	16,240
Lincoln	268,058	165,382	102,676	734,024	446,531	287,493
Lowndes	110,701	24,409	86,292	307,522	65,904	241,618
Madison	49,683	31,723	17,960	135,940	85,652	50,288
Marion	134,990	90,551	44,439	368,917	244,488	124,429
Marshall	15,654	7,864	7,790	43,045	21,233	21,812
Monroe	176,961	34,183	142,778	492,072	92,294	399,778

*continued*

**Table A.13—Roundwood pulpwood production in Mississippi, 2006 (continued)**

County <sup>a</sup>	All species			All species		
	Softwood	Hardwood		Softwood	Hardwood	
	<i>standard cords</i>			<i>green tons</i>		
Montgomery	21,258	11,331	9,927	58,390	30,594	27,796
Neshoba	54,444	34,179	20,265	149,025	92,283	56,742
Newton	48,347	29,542	18,805	132,417	79,763	52,654
Noxubee	26,169	25,807	362	70,693	69,679	1,014
Oktibbeha	32,519	31,722	797	87,881	85,649	2,232
Panola	44,279	42,391	1,888	119,742	114,456	5,286
Pearl River	174,847	166,708	8,139	472,901	450,112	22,789
Perry	165,048	157,508	7,540	446,384	425,272	21,112
Pike	47,534	31,160	16,374	129,979	84,132	45,847
Pontotoc	24,760	21,915	2,845	67,137	59,171	7,966
Prentiss	50,062	32,630	17,432	136,911	88,101	48,810
Quitman	362	0	362	1,014	0	1,014
Rankin	116,807	92,703	24,104	317,789	250,298	67,491
Scott	63,607	49,164	14,443	173,183	132,743	40,440
Sharkey	2,931	10	2,921	8,206	27	8,179
Simpson	36,632	27,022	9,610	99,867	72,959	26,908
Smith	111,904	110,646	1,258	302,266	298,744	3,522
Stone	94,083	94,083	0	254,024	254,024	0
Sunflower	3,382	0	3,382	9,470	0	9,470
Tallahatchie	6,939	4,711	2,228	18,958	12,720	6,238
Tate	2,598	1,589	1,009	7,115	4,290	2,825
Tippah	43,857	32,067	11,790	119,593	86,581	33,012
Tishomingo	79,283	54,714	24,569	216,521	147,728	68,793
Union	15,809	9,464	6,345	43,319	25,553	17,766
Walthall	113,792	64,043	49,749	312,213	172,916	139,297
Warren	41,259	1,990	39,269	115,326	5,373	109,953
Washington	7,561	538	7,023	21,117	1,453	19,664
Wayne	160,283	91,978	68,305	439,595	248,341	191,254
Webster	26,644	21,799	4,845	72,423	58,857	13,566
Wilkinson	99,443	50,152	49,291	273,425	135,410	138,015
Winston	156,736	89,138	67,598	429,947	240,673	189,274
Yalobusha	20,330	19,453	877	54,979	52,523	2,456
Yazoo	41,432	17,106	24,326	114,299	46,186	68,113
All counties	5,018,392	3,411,027	1,607,365	13,710,398	9,209,774	4,500,624

<sup>a</sup> Counties with no pulpwood production are omitted.



**Table A.14—Roundwood pulpwood production in North Carolina, 2006**

County <sup>a</sup>	All species			All species		
	Softwood	Hardwood		Softwood	Hardwood	
	<i>standard cords</i>			<i>green tons</i>		
Alamance	5,112	567	4,545	14,257	1,531	12,726
Alexander	1,632	100	1,532	4,560	270	4,290
Alleghany	6,233	36	6,197	17,449	97	17,352
Anson	97,316	71,963	25,353	265,288	194,300	70,988
Ashe	8,002	800	7,202	22,326	2,160	20,166
Beaufort	165,231	112,511	52,720	451,396	303,780	147,616
Bertie	102,406	79,778	22,628	278,759	215,401	63,358
Bladen	74,646	64,237	10,409	202,585	173,440	29,145
Brunswick	99,898	93,729	6,169	270,341	253,068	17,273
Buncombe	5,423	1,852	3,571	14,999	5,000	9,999
Burke	18,932	8,914	10,018	52,118	24,068	28,050
Cabarrus	5,316	4,414	902	14,444	11,918	2,526
Caldwell	4,014	517	3,497	11,188	1,396	9,792
Camden	8,573	661	7,912	23,939	1,785	22,154
Carteret	51,961	49,335	2,626	140,558	133,205	7,353
Caswell	32,624	1,179	31,445	91,229	3,183	88,046
Catawba	1,497	1,107	390	4,081	2,989	1,092
Chatham	9,004	1,383	7,621	25,073	3,734	21,339
Cherokee	35,543	12,658	22,885	98,255	34,177	64,078
Chowan	15,183	10,433	4,750	41,469	28,169	13,300
Clay	9,669	741	8,928	26,999	2,001	24,998
Cleveland	19,683	11,833	7,850	53,929	31,949	21,980
Columbus	130,844	86,471	44,373	357,716	233,472	124,244
Craven	133,748	84,310	49,438	366,063	227,637	138,426
Cumberland	49,386	33,273	16,113	134,953	89,837	45,116
Currituck	7,277	3,202	4,075	20,055	8,645	11,410
Dare	2,228	1,029	1,199	6,135	2,778	3,357
Davidson	2,298	46	2,252	6,430	124	6,306
Davie	1,458	59	1,399	4,076	159	3,917
Duplin	64,894	33,360	31,534	178,367	90,072	88,295
Durham	13,403	1,500	11,903	37,378	4,050	33,328
Edgecombe	62,877	41,376	21,501	171,918	111,715	60,203
Forsyth	2,075	141	1,934	5,796	381	5,415
Franklin	25,821	11,418	14,403	71,157	30,829	40,328
Gaston	12,519	6,180	6,339	34,435	16,686	17,749
Gates	60,466	26,417	34,049	166,663	71,326	95,337
Graham	7,865	9	7,856	22,021	24	21,997
Granville	17,275	512	16,763	48,318	1,382	46,936
Greene	33,442	17,261	16,181	91,912	46,605	45,307
Guilford	5,291	690	4,601	14,746	1,863	12,883
Halifax	102,551	59,791	42,760	281,164	161,436	119,728
Harnett	15,286	12,570	2,716	41,544	33,939	7,605
Haywood	41,505	12,223	29,282	114,992	33,002	81,990
Hertford	76,032	52,414	23,618	207,648	141,518	66,130
Hoke	21,958	19,450	2,508	59,537	52,515	7,022
Hyde	29,556	21,044	8,512	80,653	56,819	23,834
Iredell	7,744	1,148	6,596	21,569	3,100	18,469
Jackson	47	47	0	127	127	0

*continued*

**Table A.14—Roundwood pulpwood production in North Carolina, 2006 (continued)**

County <sup>a</sup>	All species			All species		
	Softwood	Hardwood		Softwood	Hardwood	
	<i>standard cords</i>			<i>green tons</i>		
Johnston	31,172	13,805	17,367	85,902	37,274	48,628
Jones	55,258	38,909	16,349	150,831	105,054	45,777
Lee	5,437	3,851	1,586	14,839	10,398	4,441
Lenoir	31,772	19,437	12,335	87,018	52,480	34,538
Lincoln	16,712	4,892	11,820	46,304	13,208	33,096
Macon	24,509	6,297	18,212	67,996	17,002	50,994
Martin	52,284	34,763	17,521	142,919	93,860	49,059
McDowell	29,046	13,334	15,712	79,996	36,002	43,994
Mecklenburg	9,206	3,148	6,058	25,462	8,500	16,962
Montgomery	77,982	15,427	62,555	216,807	41,653	175,154
Moore	50,932	38,866	12,066	138,723	104,938	33,785
Nash	41,302	31,092	10,210	112,536	83,948	28,588
New Hanover	5,880	5,287	593	15,935	14,275	1,660
Northampton	89,368	50,728	38,640	245,158	136,966	108,192
Onslow	110,265	96,133	14,132	299,129	259,559	39,570
Orange	1,273	0	1,273	3,564	0	3,564
Pamlico	56,737	38,381	18,356	155,026	103,629	51,397
Pasquotank	10,271	4,430	5,841	28,316	11,961	16,355
Pender	63,299	45,769	17,530	172,660	123,576	49,084
Perquimans	19,562	9,639	9,923	53,809	26,025	27,784
Person	14,536	10	14,526	40,700	27	40,673
Pitt	68,906	32,940	35,966	189,643	88,938	100,705
Polk	14,441	8,283	6,158	39,606	22,364	17,242
Randolph	3,564	1,276	2,288	9,851	3,445	6,406
Richmond	34,402	31,782	2,620	93,147	85,811	7,336
Robeson	66,719	39,903	26,816	182,823	107,738	75,085
Rockingham	72,833	9,997	62,836	202,933	26,992	175,941
Rowan	40,230	5,477	34,753	112,096	14,788	97,308
Rutherford	95,495	22,990	72,505	265,087	62,073	203,014
Sampson	50,303	30,217	20,086	137,827	81,586	56,241
Scotland	62,214	25,371	36,843	171,662	68,502	103,160
Stanly	8,377	7,456	921	22,710	20,131	2,579
Stokes	7,076	1,246	5,830	19,688	3,364	16,324
Surry	7,753	322	7,431	21,676	869	20,807
Tyrrell	4,191	1,102	3,089	11,624	2,975	8,649
Union	47,306	15,439	31,867	130,913	41,685	89,228
Vance	9,594	800	8,794	26,783	2,160	24,623
Wake	77,436	27,558	49,878	214,065	74,407	139,658
Warren	95,388	64,336	31,052	260,653	173,707	86,946
Washington	19,208	14,157	5,051	52,367	38,224	14,143
Watauga	1,152	41	1,111	3,222	111	3,111
Wayne	28,655	7,397	21,258	79,494	19,972	59,522
Wilkes	41,753	1,408	40,345	116,768	3,802	112,966
Wilson	26,199	6,553	19,646	72,702	17,693	55,009
Yadkin	3,689	438	3,251	10,286	1,183	9,103
All counties	3,389,431	1,885,376	1,504,055	9,301,871	5,090,517	4,211,354

<sup>a</sup> Counties with no pulpwood production are omitted.

**Table A.15—Roundwood pulpwood production in Oklahoma, 2006**

County <sup>a</sup>	All species			All species		
	Softwood	Hardwood		Softwood	Hardwood	
	<i>standard cords</i>			<i>green tons</i>		
Adair	5,233	0	5,233	14,652	0	14,652
Atoka	2,731	2,245	486	7,423	6,062	1,361
Choctaw	1,186	203	983	3,300	548	2,752
Coal	10	0	10	28	0	28
Latimer	1,245	0	1,245	3,486	0	3,486
Le Flore	27,755	9,109	18,646	76,803	24,594	52,209
McCurtain	194,004	130,712	63,292	530,140	352,922	177,218
Pushmataha	207,953	119,588	88,365	570,310	322,888	247,422
All counties	440,117	261,857	178,260	1,206,142	707,014	499,128

<sup>a</sup> Counties with no pulpwood production are omitted.

**Table A.16—Roundwood pulpwood production in South Carolina, 2006**

County <sup>a</sup>	All species			All species		
	Softwood	Hardwood		Softwood	Hardwood	
	<i>standard cords</i>			<i>green tons</i>		
Abbeville	28,871	13,731	15,140	79,466	37,074	42,392
Aiken	106,199	80,517	25,682	289,306	217,396	71,910
Allendale	56,694	48,171	8,523	153,926	130,062	23,864
Anderson	10,584	1,874	8,710	29,448	5,060	24,388
Bamberg	84,691	61,563	23,128	230,978	166,220	64,758
Barnwell	47,885	40,295	7,590	130,049	108,797	21,252
Beaufort	24,060	15,345	8,715	65,834	41,432	24,402
Berkeley	210,515	189,048	21,467	570,538	510,430	60,108
Calhoun	42,724	33,393	9,331	116,288	90,161	26,127
Charleston	98,076	70,612	27,464	267,551	190,652	76,899
Cherokee	47,569	36,740	10,829	129,519	99,198	30,321
Chester	140,938	109,590	31,348	383,667	295,893	87,774
Chesterfield	115,587	78,080	37,507	315,836	210,816	105,020
Clarendon	91,755	60,052	31,703	250,908	162,140	88,768
Colleton	199,293	152,449	46,844	542,775	411,612	131,163
Darlington	42,566	30,074	12,492	116,178	81,200	34,978
Dillon	43,225	30,483	12,742	117,982	82,304	35,678
Dorchester	134,284	94,658	39,626	366,530	255,577	110,953
Edgefield	78,409	57,792	20,617	213,766	156,038	57,728
Fairfield	298,875	271,770	27,105	809,673	733,779	75,894
Florence	84,787	39,309	45,478	233,472	106,134	127,338
Georgetown	259,126	211,253	47,873	704,427	570,383	134,044
Greenville	31,147	20,692	10,455	85,142	55,868	29,274
Greenwood	29,391	22,818	6,573	80,013	61,609	18,404
Hampton	159,098	121,755	37,343	433,299	328,739	104,560
Horry	103,177	73,113	30,064	281,584	197,405	84,179
Jasper	151,833	79,836	71,997	417,149	215,557	201,592
Kershaw	161,141	127,674	33,467	438,428	344,720	93,708
Lancaster	136,488	114,451	22,037	370,722	309,018	61,704
Laurens	47,530	34,055	13,475	129,679	91,949	37,730
Lee	54,163	38,216	15,947	147,835	103,183	44,652
Lexington	40,026	28,018	12,008	109,271	75,649	33,622
Marion	52,214	18,131	34,083	144,386	48,954	95,432
Marlboro	76,984	53,095	23,889	210,246	143,357	66,889
McCormick	11,205	7,825	3,380	30,592	21,128	9,464
Newberry	118,954	111,766	7,188	321,894	301,768	20,126
Oconee	44,368	18,490	25,878	122,381	49,923	72,458
Orangeburg	192,298	141,380	50,918	524,296	381,726	142,570
Pickens	14,928	6,948	7,980	41,104	18,760	22,344
Richland	137,372	105,726	31,646	374,069	285,460	88,609
Saluda	57,234	53,025	4,209	154,953	143,168	11,785
Spartanburg	68,480	39,954	28,526	187,749	107,876	79,873
Sumter	68,710	43,396	25,314	188,048	117,169	70,879
Union	128,164	82,433	45,731	350,616	222,569	128,047
Williamsburg	180,421	140,656	39,765	491,113	379,771	111,342
York	74,339	43,034	31,305	203,846	116,192	87,654
All counties	4,386,378	3,253,286	1,133,092	11,956,532	8,783,876	3,172,656

<sup>a</sup> Counties with no pulpwood production are omitted.

**Table A.17—Roundwood pulpwood production in Tennessee, 2006**

County <sup>a</sup>	All species			All species		
	Softwood	Hardwood		Softwood	Hardwood	
	<i>standard cords</i>			<i>green tons</i>		
Anderson	24,347	22	24,325	68,169	59	68,110
Bedford	334	66	268	928	178	750
Benton	38,224	14,590	23,634	105,568	39,393	66,175
Bledsoe	31,836	23,667	8,169	86,774	63,901	22,873
Blount	3,432	848	2,584	9,525	2,290	7,235
Bradley	21,986	14,811	7,175	60,080	39,990	20,090
Campbell	29,536	0	29,536	82,701	0	82,701
Cannon	1,253	24	1,229	3,506	65	3,441
Carroll	16,038	2,413	13,625	44,665	6,515	38,150
Carter	41	11	30	114	30	84
Chester	14,216	10,571	3,645	38,748	28,542	10,206
Claiborne	9,712	29	9,683	27,190	78	27,112
Cocke	914	178	736	2,542	481	2,061
Coffee	7,834	935	6,899	21,842	2,525	19,317
Crockett	43	43	0	116	116	0
Cumberland	28,543	8,438	20,105	79,077	22,783	56,294
Decatur	30,239	13,584	16,655	83,311	36,677	46,634
De Kalb	11	0	11	31	0	31
Fayette	8,988	7,880	1,108	24,378	21,276	3,102
Fentress	5,712	345	5,367	15,960	932	15,028
Franklin	27,047	73	26,974	75,724	197	75,527
Gibson	548	450	98	1,489	1,215	274
Giles	13,539	2,324	11,215	37,677	6,275	31,402
Grainger	1,540	420	1,120	4,270	1,134	3,136
Grundy	45,354	12,718	32,636	125,720	34,339	91,381
Hamblen	30	21	9	82	57	25
Hamilton	34,743	26,852	7,891	94,595	72,500	22,095
Hardeman	31,253	23,387	7,866	85,170	63,145	22,025
Hardin	73,932	53,327	20,605	201,677	143,983	57,694
Hawkins	10,727	0	10,727	30,036	0	30,036
Haywood	297	151	146	817	408	409
Henderson	18,677	11,456	7,221	51,150	30,931	20,219
Henry	36,069	6,758	29,311	100,318	18,247	82,071
Hickman	68,646	8,367	60,279	191,372	22,591	168,781
Houston	32	0	32	90	0	90
Humphreys	10,455	717	9,738	29,202	1,936	27,266
Jefferson	701	226	475	1,940	610	1,330
Johnson	3,809	15	3,794	10,664	41	10,623
Knox	6,142	5,817	325	16,616	15,706	910
Lauderdale	62	0	62	174	0	174
Lawrence	60,250	27,198	33,052	165,981	73,435	92,546
Lewis	71,992	6,283	65,709	200,949	16,964	183,985
Lincoln	2,115	18	2,097	5,921	49	5,872
Loudon	5,674	5,403	271	15,347	14,588	759
Madison	5,763	3,722	2,041	15,764	10,049	5,715
Marion	56,631	25,013	31,618	156,065	67,535	88,530
Marshall	404	10	394	1,130	27	1,103
Mauzy	12,752	1,480	11,272	35,558	3,996	31,562

*continued*

**Table A.17—Roundwood pulpwood production in Tennessee, 2006 (continued)**

County <sup>a</sup>	All species			All species		
	Softwood	Hardwood		Softwood	Hardwood	
	<i>standard cords</i>			<i>green tons</i>		
McMinn	26,353	19,087	7,266	71,880	51,535	20,345
McNairy	66,172	40,251	25,921	181,257	108,678	72,579
Meigs	9,419	6,266	3,153	25,746	16,918	8,828
Monroe	16,939	7,955	8,984	46,634	21,479	25,155
Montgomery	260	260	0	702	702	0
Moore	3,137	0	3,137	8,784	0	8,784
Morgan	8,829	429	8,400	24,678	1,158	23,520
Obion	1,867	1,867	0	5,041	5,041	0
Overton	4,749	584	4,165	13,239	1,577	11,662
Perry	112,238	3,804	108,434	313,886	10,271	303,615
Pickett	101	92	9	273	248	25
Polk	17,770	6,408	11,362	49,116	17,302	31,814
Putnam	1,124	123	1,001	3,135	332	2,803
Rhea	40,738	22,707	18,031	111,796	61,309	50,487
Roane	6,867	2,278	4,589	19,000	6,151	12,849
Rutherford	9	9	0	24	24	0
Scott	30,722	22	30,700	86,019	59	85,960
Sequatchie	39,331	17,598	21,733	108,367	47,515	60,852
Sevier	1,792	893	899	4,928	2,411	2,517
Shelby	7,242	6,149	1,093	19,662	16,602	3,060
Stewart	36,302	1,450	34,852	101,501	3,915	97,586
Tipton	17	0	17	48	0	48
Union	3,456	124	3,332	9,665	335	9,330
Van Buren	8,446	2,710	5,736	23,378	7,317	16,061
Warren	12,836	970	11,866	35,844	2,619	33,225
Washington	10	0	10	28	0	28
Wayne	163,754	93,675	70,079	449,144	252,923	196,221
Weakley	68,978	20,963	48,015	191,042	56,600	134,442
White	16,201	1,800	14,401	45,183	4,860	40,323
Williamson	10	0	10	28	0	28
Wilson	38	0	38	106	0	106
All counties	1,578,130	579,135	998,995	4,360,857	1,563,670	2,797,187

<sup>a</sup> Counties with no pulpwood production are omitted.

**Table A.18—Roundwood pulpwood production in Texas, 2006**

County <sup>a</sup>	All species			All species		
	Softwood	Hardwood		Softwood	Hardwood	
	<i>standard cords</i>			<i>green tons</i>		
Anderson	11,337	8,306	3,031	30,913	22,426	8,487
Angelina	169,238	131,718	37,520	460,695	355,639	105,056
Bowie	93,021	48,913	44,108	255,567	132,065	123,502
Camp	11,683	4,430	7,253	32,269	11,961	20,308
Cass	305,045	94,884	210,161	844,638	256,187	588,451
Cherokee	46,412	26,977	19,435	127,256	72,838	54,418
Cooke	12	0	12	34	0	34
Dallas	26	26	0	70	70	0
Franklin	571	92	479	1,589	248	1,341
Gregg	6,326	603	5,723	17,652	1,628	16,024
Hardin	75,973	43,045	32,928	208,420	116,222	92,198
Harris	464	56	408	1,293	151	1,142
Harrison	62,065	22,766	39,299	171,505	61,468	110,037
Henderson	1,889	11	1,878	5,288	30	5,258
Hopkins	1,956	1,569	387	5,320	4,236	1,084
Houston	17,817	4,812	13,005	49,406	12,992	36,414
Jasper	147,211	117,929	29,282	400,398	318,408	81,990
Jefferson	1,378	1,378	0	3,721	3,721	0
Kendall	11	0	11	31	0	31
Kerr	8	0	8	22	0	22
Lamar	4,635	11	4,624	12,977	30	12,947
Liberty	77,491	44,281	33,210	212,547	119,559	92,988
Madison	50	0	50	140	0	140
Marion	42,964	9,117	33,847	119,388	24,616	94,772
Montgomery	23,689	7,262	16,427	65,603	19,607	45,996
Morris	20,939	2,907	18,032	58,339	7,849	50,490
Nacogdoches	97,188	74,134	23,054	264,713	200,162	64,551
Newton	213,573	184,066	29,507	579,598	496,978	82,620
Orange	16,942	10,157	6,785	46,422	27,424	18,998
Panola	88,751	47,214	41,537	243,782	127,478	116,304
Polk	27,998	20,105	7,893	76,384	54,284	22,100
Rains	172	10	162	481	27	454
Red River	103,411	18,297	85,114	287,721	49,402	238,319
Rusk	30,926	18,380	12,546	84,755	49,626	35,129
Sabine	45,558	37,847	7,711	123,778	102,187	21,591
San Augustine	96,374	77,282	19,092	262,119	208,661	53,458
San Jacinto	37,191	13,265	23,926	102,809	35,816	66,993
Shelby	82,703	56,531	26,172	225,916	152,634	73,282
Smith	51,455	9,500	41,955	143,124	25,650	117,474
Titus	49,089	4,295	44,794	137,020	11,597	125,423
Trinity	164	164	0	443	443	0
Tyler	131,194	79,762	51,432	359,367	215,357	144,010
Upshur	29,603	8,231	21,372	82,066	22,224	59,842
Van Zandt	953	768	185	2,592	2,074	518
Walker	17,287	4,074	13,213	47,996	11,000	36,996
Webb	11	0	11	31	0	31
Wood	16,242	1,660	14,582	45,312	4,482	40,830
All counties	2,258,996	1,236,835	1,022,161	6,201,510	3,339,457	2,862,053

<sup>a</sup> Counties with no pulpwood production are omitted.

**Table A.19—Roundwood pulpwood production in Virginia, 2006**

County <sup>a</sup>	All species			All species		
	Softwood	Hardwood		Softwood	Hardwood	
	<i>standard cords</i>			<i>green tons</i>		
Accomack	467	0	467	1,308	0	1,308
Albemarle	15,607	3,679	11,928	43,331	9,933	33,398
Alleghany	28,706	2,954	25,752	80,082	7,976	72,106
Amelia	78,810	44,308	34,502	216,238	119,632	96,606
Amherst	29,293	13,265	16,028	80,694	35,816	44,878
Appomattox	46,623	28,353	18,270	127,709	76,553	51,156
Augusta	4,184	852	3,332	11,630	2,300	9,330
Bath	15,714	2,426	13,288	43,756	6,550	37,206
Bedford	35,420	5,973	29,447	98,579	16,127	82,452
Bland	2,054	31	2,023	5,748	84	5,664
Botetourt	28,028	4,310	23,718	78,047	11,637	66,410
Brunswick	135,724	100,926	34,798	369,934	272,500	97,434
Buchanan	20	20	0	54	54	0
Buckingham	159,675	93,355	66,320	437,755	252,059	185,696
Campbell	52,633	23,231	29,402	145,050	62,724	82,326
Caroline	99,216	57,878	41,338	272,017	156,271	115,746
Carroll	1,379	0	1,379	3,861	0	3,861
Charles City	40,947	28,016	12,931	111,850	75,643	36,207
Charlotte	85,035	30,178	54,857	235,081	81,481	153,600
Chesapeake	10,225	2,895	7,330	28,341	7,817	20,524
Chesterfield	16,682	11,293	5,389	45,580	30,491	15,089
Craig	8,313	2,762	5,551	23,000	7,457	15,543
Culpeper	7,760	4,289	3,471	21,299	11,580	9,719
Cumberland	41,614	19,406	22,208	114,578	52,396	62,182
Dickenson	78,328	0	78,328	219,318	0	219,318
Dinwiddie	74,960	52,058	22,902	204,683	140,557	64,126
Essex	24,285	15,283	9,002	66,470	41,264	25,206
Fairfax	7,336	1,432	5,904	20,397	3,866	16,531
Fauquier	3,841	3,454	387	10,410	9,326	1,084
Floyd	671	73	598	1,871	197	1,674
Fluvanna	19,727	12,648	7,079	53,971	34,150	19,821
Franklin	26,029	3,661	22,368	72,515	9,885	62,630
Frederick	9,678	4,314	5,364	26,667	11,648	15,019
Giles	196	0	196	549	0	549
Gloucester	12,855	7,047	5,808	35,289	19,027	16,262
Goochland	15,590	12,619	2,971	42,390	34,071	8,319
Grayson	2,019	21	1,998	5,651	57	5,594
Greene	153	68	85	422	184	238
Greensville	83,715	40,796	42,919	230,322	110,149	120,173
Halifax	34,797	5,832	28,965	96,848	15,746	81,102
Hampton	24	9	15	66	24	42
Hanover	21,118	12,812	8,306	57,849	34,592	23,257
Henrico	10,529	2,588	7,941	29,223	6,988	22,235
Henry	25,940	8,213	17,727	71,811	22,175	49,636
Highland	8,216	1,489	6,727	22,856	4,020	18,836
Isle of Wight	29,309	16,688	12,621	80,397	45,058	35,339
James City	15,470	4,005	11,465	42,916	10,814	32,102
King and Queen	72,327	53,281	19,046	197,188	143,859	53,329

*continued*



**Table A.19—Roundwood pulpwood production in Virginia, 2006 (continued)**

County <sup>a</sup>	All species			All species		
	Softwood	Hardwood		Softwood	Hardwood	
	<i>standard cords</i>			<i>green tons</i>		
King George	3,580	1,924	1,656	9,832	5,195	4,637
King William	28,213	17,762	10,451	77,220	47,957	29,263
Lancaster	15,626	6,363	9,263	43,116	17,180	25,936
Lee	392	392	0	1,058	1,058	0
Loudoun	10,385	45	10,340	29,074	122	28,952
Louisa	51,064	31,001	20,063	139,879	83,703	56,176
Lunenburg	27,017	16,161	10,856	74,032	43,635	30,397
Madison	2,245	1,282	963	6,157	3,461	2,696
Mathews	6,557	2,758	3,799	18,084	7,447	10,637
Mecklenburg	24,055	9,680	14,375	66,386	26,136	40,250
Middlesex	16,461	10,792	5,669	45,011	29,138	15,873
Montgomery	4,199	37	4,162	11,754	100	11,654
Nelson	20,203	11,983	8,220	55,370	32,354	23,016
New Kent	29,152	16,387	12,765	79,987	44,245	35,742
Newport News	1,803	472	1,331	5,001	1,274	3,727
Northampton	762	411	351	2,093	1,110	983
Northumberland	14,069	4,994	9,075	38,894	13,484	25,410
Nottoway	41,969	21,126	20,843	115,400	57,040	58,360
Orange	10,340	7,878	2,462	28,165	21,271	6,894
Page	858	40	818	2,398	108	2,290
Patrick	37,554	8,101	29,453	104,341	21,873	82,468
Pittsylvania	75,141	18,945	56,196	208,501	51,152	157,349
Powhatan	55,116	23,225	31,891	152,003	62,708	89,295
Prince Edward	45,850	17,023	28,827	126,678	45,962	80,716
Prince George	31,260	20,460	10,800	85,482	55,242	30,240
Prince William	14,938	8,018	6,920	41,025	21,649	19,376
Pulaski	18	0	18	50	0	50
Richmond	25,990	12,889	13,101	71,483	34,800	36,683
Roanoke	2,208	133	2,075	6,169	359	5,810
Rockbridge	20,951	4,621	16,330	58,201	12,477	45,724
Rockingham	2,987	1,261	1,726	8,238	3,405	4,833
Russell	1,248	11	1,237	3,494	30	3,464
Shenandoah	9,646	2,117	7,529	26,797	5,716	21,081
Smyth	1,936	4	1,932	5,421	11	5,410
Southampton	128,953	78,581	50,372	353,211	212,169	141,042
Spotsylvania	24,801	21,310	3,491	67,312	57,537	9,775
Stafford	12,990	3,661	9,329	36,006	9,885	26,121
Suffolk	34,102	15,075	19,027	93,979	40,703	53,276
Surry	18,504	14,620	3,884	50,349	39,474	10,875
Sussex	91,264	63,149	28,115	249,224	170,502	78,722
Tazewell	2,035	0	2,035	5,698	0	5,698
Virginia Beach	4,961	2,219	2,742	13,669	5,991	7,678
Warren	4,431	914	3,517	12,316	2,468	9,848
Washington	124	8	116	347	22	325
Westmoreland	8,341	2,848	5,493	23,070	7,690	15,380
Wythe	1,251	0	1,251	3,503	0	3,503
York	3,943	994	2,949	10,941	2,684	8,257
All counties	2,490,735	1,220,466	1,270,269	6,852,020	3,295,265	3,556,755

<sup>a</sup> Counties with no pulpwood production are omitted.

**Table A.20—Softwood roundwood pulpwood movement between States, 2006**

<b>Southeast</b>													
Exported to													
Imported from	FL	GA	NC	SC	VA	AL	LA	MD	MS	PA	TN	Other <sup>a</sup>	Roundwood production
<i>standard cords</i>													
Florida	2,328,102	399,983	0	0	0	111,522	0	0	7,794	0	0	0	2,847,401
Georgia	427,038	5,257,302	17,079	11,008	0	430,032	0	0	10	0	232,024	15,410	6,389,903
North Carolina	0	0	1,418,076	407,514	47,498	0	0	0	0	0	12,288	0	1,885,376
South Carolina	0	390,535	279,866	2,572,721	0	0	0	0	0	0	1,626	8,538	3,253,286
Virginia	0	0	137,206	488	934,075	0	0	88,356	0	59,949	0	392	1,220,466
Alabama	248,112	504,886	0	0	0	0	0	0	0	0	0	0	NA
Maryland	0	0	0	0	136	0	0	0	0	0	0	0	NA
Mississippi	4,087	0	0	0	0	0	0	0	0	0	0	0	NA
Tennessee	0	122	6	0	9	0	0	0	0	0	0	0	NA
West Virginia	0	0	0	0	2,651	0	0	0	0	0	0	0	NA
Other <sup>b</sup>	133,934	0	0	0	0	0	0	0	0	0	0	0	NA
Roundwood receipts	3,141,273	6,552,828	1,852,233	2,991,731	984,369								15,596,432
Total Southeast receipts = 15,522,434													
<b>South Central</b>													
Exported to													
Imported from	AL	AR	KY	LA	MS	OK	TN	TX	FL	GA	NC	Other <sup>c</sup>	Roundwood production
<i>standard cords</i>													
Alabama	3,850,983	69	0	42	544,665	0	147,761	0	248,112	504,886	0	0	5,296,518
Arkansas	0	1,139,966	11	320,064	123	193,261	0	131,648	0	0	0	0	1,785,073
Kentucky	0	0	26,274	0	0	0	3,866	0	0	0	0	31,289	61,429
Louisiana	0	72,024	0	3,172,381	41,303	0	0	216,062	0	0	0	0	3,501,770
Mississippi	152,237	24,873	0	620,913	2,298,570	0	310,347	0	4,087	0	0	0	3,411,027
Oklahoma	0	22,188	0	0	0	239,616	0	53	0	0	0	0	261,857
Tennessee	109,876	13	14,748	0	103	0	454,258	0	0	122	6	9	579,135
Texas	0	97,815	0	216,990	0	124,884	0	797,146	0	0	0	0	1,236,835
Florida	111,522	0	0	0	7,794	0	0	0	0	0	0	0	NA
Georgia	430,032	186	0	0	10	6,917	232,024	0	0	0	0	0	NA
Illinois	0	0	1,978	0	0	0	0	0	0	0	0	0	NA
North Carolina	0	0	0	0	0	0	12,288	0	0	0	0	0	NA
South Carolina	0	0	0	0	0	0	1,626	0	0	0	0	0	NA
Other <sup>d</sup>	0	0	27	0	0	0	0	0	0	0	0	0	NA
Roundwood receipts	4,654,650	1,357,134	43,038	4,330,390	2,892,568	564,678	1,162,170	1,144,909					16,133,644
Total South Central receipts = 16,149,537													

Note: Boxed numbers are retained roundwood volume processed by mills in the State in which it is harvested.

NA = not applicable.

<sup>a</sup> Other destinations include Arkansas, Ohio, and Oklahoma.

<sup>b</sup> Other sources include foreign.

<sup>c</sup> Other destinations include Ohio and Virginia.

<sup>d</sup> Other sources include Missouri.

**Table A.21—Hardwood roundwood pulpwood movement between States, 2006**

<b>Southeast</b>														
Exported to													Roundwood production	
Imported from	FL	GA	NC	SC	VA	AL	LA	MD	PA	TN	Other <sup>a</sup>			
<i>standard cords</i>														
Florida	201,386	18,657	0	0	0	14,770	0	0	0	0	0	10	234,823	
Georgia	46	1,148,132	50,025	23	1,446	139,809	8	0	0	87,050	1,026	1,427,565		
North Carolina	0	9,180	936,708	218,185	267,930	0	0	0	0	72,052	0	1,504,055		
South Carolina	0	176,646	45,780	910,637	0	0	0	0	0	29	0	1,133,092		
Virginia	0	70,786	14,458	4,870	1,031,380	0	0	60,354	5,999	82,422	0	1,270,269		
Alabama	1,253	60,468	12,498	477	9	0	0	0	0	0	0	NA		
Maryland	0	0	0	0	2,236	0	0	0	0	0	0	NA		
Pennsylvania	0	0	552	774	536	0	0	0	0	0	0	NA		
Tennessee	0	61	97,971	8,125	3,757	0	0	0	0	0	0	NA		
West Virginia	0	0	0	0	149,760	0	0	0	0	0	0	NA		
Other <sup>b</sup>	0	0	0	3,018	579	0	0	0	0	0	0	NA		
Roundwood receipts	202,685	1,483,930	1,157,992	1,146,109	1,457,633								5,569,804	
Total Southeast receipts = 5,448,349														
<b>South Central</b>														
Exported to													Roundwood production	
Imported from	AL	AR	KY	LA	MS	OK	TN	TX	FL	GA	NC	SC		Other <sup>c</sup>
<i>standard cords</i>														
Alabama	2,414,108	328	0	32	10	0	21,654	10	1,253	60,468	12,498	477	9	2,510,847
Arkansas	0	1,030,627	556	78,424	29	25,089	0	171,063	0	0	0	0	0	1,305,788
Kentucky	0	0	202,415	0	0	0	41,984	0	0	0	0	3,018	8,415	255,832
Louisiana	0	167,741	0	797,971	1,103	0	0	192,784	0	0	0	0	0	1,159,599
Mississippi	465,429	215,333	131,732	534,742	187,812	0	72,198	119	0	0	0	0	0	1,607,365
Oklahoma	0	99,012	0	0	0	79,060	0	188	0	0	0	0	0	178,260
Tennessee	387,039	53	195,149	0	559	0	306,281	0	0	61	97,971	8,125	3,757	998,995
Texas	0	250,339	0	45,445	10	52,473	0	673,894	0	0	0	0	0	1,022,161
Florida	14,770	10	0	0	0	0	0	0	0	0	0	0	0	NA
Georgia	139,809	336	690	8	0	0	87,050	0	0	0	0	0	0	NA
Illinois	0	0	8,795	0	0	0	0	0	0	0	0	0	0	NA
North Carolina	0	0	0	0	0	0	72,052	0	0	0	0	0	0	NA
South Carolina	0	0	0	0	0	0	29	0	0	0	0	0	0	NA
Other <sup>d</sup>	0	7,268	35,187	15,464	0	0	82,422	0	0	0	0	0	0	NA
Roundwood receipts	3,421,155	1,771,047	574,524	1,472,086	189,523	156,622	683,670	1,038,058						9,038,847
Total South Central receipts = 9,306,685														

Note: Boxed numbers are retained roundwood volume processed by mills in the State in which it is harvested.

NA = not applicable.

<sup>a</sup> Other destinations include Arkansas and Kentucky.

<sup>b</sup> Other sources include Kentucky.

<sup>c</sup> Other destinations include Ohio and Virginia.

<sup>d</sup> Other sources include Indiana, Missouri, Virginia, and foreign.

**Table A.22—Southern pulpmills, by process and capacity, 2006**

Location	Map code <sup>a</sup>	Company	All processes	Pulping capacity, 24 hours			
				Sulfate	Groundwood and other mechanical	Semi-chemical	Soda and sulfite
				<i>tons</i>			
<b>Alabama</b>							
Clairborne <sup>b</sup>	[1,2,3]	Alabama River Companies	3,600	3,000	600	0	0
Jackson	[4]	Boise Cascade LLC	800	800	0	0	0
Courtland	[5]	International Paper Company	2,360	2,360	0	0	0
Demopolis	[6]	Rock-Tenn Company	1,100	1,100	0	0	0
Selma	[7]	International Paper Company	1,260	1,260	0	0	0
Naheola	[8]	Georgia-Pacific Corporation	1,100	1,100	0	0	0
Brewton	[9]	Smurfit-Stone Container Corporation	1,300	1,300	0	0	0
Coosa Pines	[10]	Bowater, Inc.	752	752	0	0	0
Pine Hill	[11]	Weyerhaeuser Company	2,000	1,350	0	650	0
Cottonton	[12]	MeadWestvaco Corporation	2,300	2,300	0	0	0
Stevenson	[13]	Smurfit-Stone Container Corporation	750	0	0	750	0
Prattville	[14]	International Paper Company	2,710	2,710	0	0	0
Total			20,032	18,032	600	1,400	0
<b>Arkansas</b>							
Pine Bluff	[15]	Delta Natural Kraft	500	500	0	0	0
Ashdown	[16]	Domtar Industries, Inc.	2,450	2,450	0	0	0
Crossett	[17]	Georgia-Pacific Corporation	1,600	1,600	0	0	0
Morrilton	[18]	Green Bay Packaging, Inc.	800	800	0	0	0
Pine Bluff	[19]	International Paper Company	1,550	1,370	180	0	0
McGehee	[20]	Potlatch Corporation	900	900	0	0	0
Total			7,800	7,620	180	0	0
<b>Florida</b>							
Perry	[21]	Buckeye Florida, LP	1,200	1,200	0	0	0
Cantonment	[22]	International Paper Company	1,570	1,570	0	0	0
Palatka	[23]	Georgia-Pacific Corporation	1,500	1,500	0	0	0
Fernandina Beach	[24]	Rayonier, Inc.	475	0	0	0	475
Fernandina Beach	[25]	Smurfit-Stone Container Corporation	2,200	2,200	0	0	0
Panama City	[26]	Smurfit-Stone Container Corporation	1,635	1,635	0	0	0
Total			8,580	8,105	0	0	475
<b>Georgia</b>							
Augusta	[27]	Augusta Newsprint Company	1,100	0	1,100	0	0
Augusta	[28]	International Paper Company	2,030	2,030	0	0	0
Brunswick	[29]	Georgia-Pacific Corporation	2,450	2,450	0	0	0
Cedar Springs	[30]	Georgia-Pacific Corporation	2,825	2,300	0	525	0
Rome	[31]	Temple-Inland, Inc.	2,250	2,250	0	0	0
Riceboro	[32]	Interstate Paper LLC	700	700	0	0	0
Jesup	[33]	Rayonier, Inc.	1,750	1,750	0	0	0
Valdosta	[34]	Packaging Corporation of America	1,420	1,420	0	0	0
Macon	[35]	Graphic Packaging International, Inc.	1,450	1,450	0	0	0
Savannah	[36]	International Paper Company	2,830	2,830	0	0	0
Oglethorpe	[37]	Weyerhaeuser Company	1,155	1,155	0	0	0
Port Wentworth	[38]	Weyerhaeuser Company	975	975	0	0	0
Total			20,935	19,310	1,100	525	0

*continued*

**Table A.22—Southern pulpmills, by process and capacity, 2006 (continued)**

Location	Map code <sup>a</sup>	Company	All processes	Pulping capacity, 24 hours			
				Sulfate	Groundwood and other mechanical	Semi-chemical	Soda and sulfite
				<i>tons</i>			
<b>Kentucky</b>							
Wickliffe	[39]	NewPage Corporation	850	850	0	0	0
Hawesville	[40]	Weyerhaeuser Company	1,400	1,400	0	0	0
Total			2,250	2,250	0	0	0
<b>Louisiana</b>							
DeRidder	[41]	Boise Cascade Corporation	1,975	1,300	675	0	0
Bogalusa	[42]	Temple-Inland, Inc.	2,150	2,150	0	0	0
Port Hudson	[43]	Georgia-Pacific Corporation	1,920	1,920	0	0	0
Bastrop	[44]	International Paper Company	1,220	1,220	0	0	0
Pineville	[45]	International Paper Company	1,100	1,100	0	0	0
Mansfield	[46]	International Paper Company	2,740	2,140	0	600	0
St. Francisville	[47]	Tembec, Inc.	705	705	0	0	0
West Monroe	[48]	Graphic Packaging International, Inc.	1,980	1,730	0	250	0
Hodge	[49]	Smurfit-Stone Container Corporation	1,500	1,500	0	0	0
Campti	[50]	Weyerhaeuser Company	1,050	1,050	0	0	0
Total			16,340	14,815	675	850	0
<b>Mississippi</b>							
Monticello	[51]	Georgia-Pacific Corporation	2,500	2,500	0	0	0
New Augusta	[52]	Georgia-Pacific Corporation	1,550	1,550	0	0	0
Vicksburg	[53]	International Paper Company	1,490	1,490	0	0	0
Grenada	[54]	Bowater, Inc.	700	0	700	0	0
Columbus	[55]	Weyerhaeuser Company	1,670	1,450	220	0	0
Total			7,910	6,990	920	0	0
<b>North Carolina</b>							
Roaring River	[56]	Louisiana-Pacific Corporation	475	0	475	0	0
Canton	[57]	Blue Ridge Paper Products, Inc.	1,600	1,600	0	0	0
Roanoke Rapids	[58]	International Paper Company	1,630	1,630	0	0	0
Riegelwood	[59]	International Paper Company	1,730	1,730	0	0	0
New Bern	[60]	Weyerhaeuser Company	900	900	0	0	0
Plymouth	[61]	Weyerhaeuser Company	1,200	1,200	0	0	0
Total			7,535	7,060	475	0	0
<b>Oklahoma</b>							
Pryor	[62]	Georgia-Pacific Corporation	50	0	50	0	0
Valliant	[63]	Weyerhaeuser Company	2,700	2,200	0	500	0
Total			2,750	2,200	50	500	0
<b>South Carolina</b>							
Catawba	[64]	Bowater, Inc.	2,100	1,500	600	0	0
Georgetown	[65]	International Paper Company	1,700	1,700	0	0	0
Hartsville	[66]	Sonoco Products Company	300	0	0	300	0
Florence	[67]	Smurfit-Stone Container Corporation	1,530	1,530	0	0	0
Eastover	[68]	International Paper Company	1,840	1,840	0	0	0
Charleston	[69]	MeadWestvaco Corporation	2,080	2,080	0	0	0
Bennettsville	[70]	Weyerhaeuser Company	1,000	1,000	0	0	0
Total			10,550	9,650	600	300	0

*continued*

**Table A.22—Southern pulpmills, by process and capacity, 2006 (continued)**

Location	Map code <sup>a</sup>	Company	All processes	Pulping capacity, 24 hours			
				Sulfate	Groundwood and other mechanical	Semi-chemical	Soda and sulfite
				<i>tons</i>			
<b>Tennessee</b>							
Calhoun	[71]	Bowater, Inc.	1,450	1,000	450	0	0
New Johnsonville	[72]	Temple-Inland, Inc.	500	0	0	500	0
Kingsport	[73]	Weyerhaeuser Company	850	0	0	0	850
Counce	[74]	Packaging Corporation of America	1,950	1,950	0	0	0
Knoxville	[75]	Tamko Roofing Products, Inc.	125	0	125	0	0
Total			4,875	2,950	575	500	850
<b>Texas</b>							
Texarkana	[76]	International Paper Company	1,630	1,630	0	0	0
Orange	[77]	Temple-Inland, Inc.	1,866	1,866	0	0	0
Diboll	[78]	Temple-Inland, Inc.	500	0	500	0	0
Silsbee	[79]	MeadWestvaco Corporation	1,850	1,850	0	0	0
Total			5,846	5,346	500	0	0
<b>Virginia</b>							
Ashland	[80]	Bear Island Paper Company, LLC	880	0	880	0	0
West Point	[81]	Smurfit-Stone Container Corporation	1,700	1,700	0	0	0
Jarratt	[82]	Georgia-Pacific Corporation	400	0	400	0	0
Big Island	[83]	Georgia-Pacific Corporation	750	0	0	750	0
Hopewell	[84]	Smurfit-Stone Container Corporation	1,030	1,030	0	0	0
Franklin	[85]	International Paper Company	2,230	2,230	0	0	0
Riverville	[86]	Greif, Inc.	600	0	0	600	0
Covington	[87]	MeadWestvaco Corporation	2,100	2,100	0	0	0
Total			9,690	7,060	1,280	1,350	0
<b>Total South</b>			125,093	111,388	6,955	5,425	1,325

<sup>a</sup> Corresponds to numbers at locations on the mill capacity map (fig. 7).

<sup>b</sup> This is pulping capacity for three mills at this site.

**Table A.23—Other mills using southern pulpwood in 2006, by process and capacity**

Location	Company	All processes	Pulping capacity, 24 hours			
			Sulfate	Groundwood and other mechanical	Semi-chemical	Soda and sulfite
				<i>tons</i>		
<b>Maryland</b>						
Luke	NewPage Corporation	850	850			
<b>Ohio</b>						
Glatfelter Company	Glatfelter Company	1,785	1,785			
<b>Pennsylvania</b>						
Spring Grove	Glatfelter Company	700	700			

**Johnson, Tony G.; Steppleton, Carolyn D.** 2008. Southern pulpwood production, 2006. Resour. Bull. SRS-134. Asheville, NC: U.S. Department of Agriculture Forest Service, Southern Research Station. 42 p.

The South's production of pulpwood increased from 64.0 million cords in 2005 to 64.7 million cords in 2006. Roundwood production increased 123,300 cords to 46.3 million cords and accounted for 72 percent of the total pulpwood production. The use of wood residue increased 3 percent to 18.3 million cords. Alabama led the South in total production at 10.5 million cords. In 2006, 87 mills were operating and drawing wood from the 13 Southern States. Pulping capacity of southern mills increased from 124,567 tons per day in 2005 to 125,093 tons per day, and still accounts for more than 70 percent of the Nation's pulping capacity.

**Keywords:** FIA, pulping capacity, pulpmills, pulpwood, residues, roundwood.



The Forest Service, U.S. Department of Agriculture (USDA), is committed to the principle of multiple use management of the Nation's forest resources for sustained yields of wood, water, forage, wildlife, and recreation. Through forestry research, cooperation with the States and private forest owners, and management of the National Forests and National Grasslands, it strives—as directed by Congress—to provide increasingly greater service to a growing Nation.

The USDA prohibits discrimination in all its programs and activities on the basis of race, color, national origin, age, disability, and where applicable, sex, marital status, familial status, parental status, religion, sexual orientation, genetic information, political beliefs, reprisal, or because all or part of an individual's income is derived from any public assistance program. (Not all prohibited bases apply to all programs.) Persons with disabilities who require alternative means for communication of program information (Braille, large print, audiotape, etc.) should contact USDA's TARGET Center at (202) 720-2600 (voice and TDD).

To file a complaint of discrimination, write to USDA, Director, Office of Civil Rights, 1400 Independence Avenue, SW, Washington, DC 20250-9410 or call (800) 795-3272 (voice) or (202) 720-6382 (TDD). USDA is an equal opportunity provider and employer.