

Overview of Progression of Botulinal Symptoms in Mice

Eric A. Johnson
University of Wisconsin - Madison

Progression of Mouse Botulism Symptoms

- Ruffled fur
 - Usually first symptom, may not last long (variable)
- “wasp-waist”
 - First classic botulism symptom
 - Early on, may be subtle (compare to non-injected mouse)
- Hind limb paralysis
 - Decreased overall movement, difficulty walking
- Labored breathing
 - Severe symptom, classic botulism symptom if following wasp-waist
 - Euthanize?
- Death

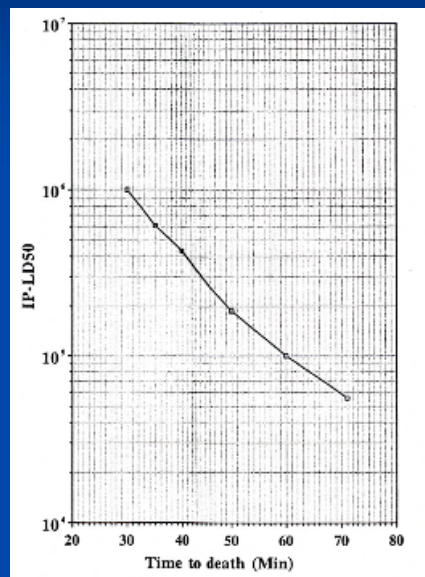
Mouse Restraint



Mouse Restraint for IV Rapid Assay



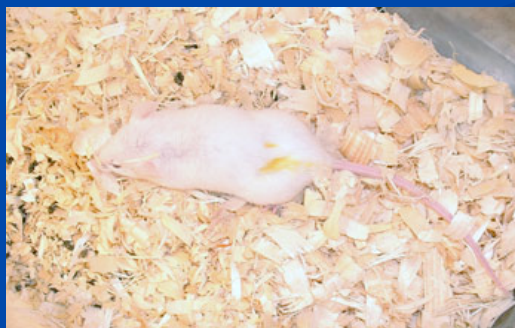
Rapid IV Assay for BoNT in Mice



Mouse with Botulism



← Ruffled fur



← Wasp waist

