

The background of the slide is a tropical sunset scene. The sun is low on the horizon, creating a bright glow and silhouetting palm trees in the foreground. The sky is filled with soft, white clouds. The word 'Yokwe' is written in a large, bold, sans-serif font across the top. Each letter is a different color from a rainbow spectrum: 'Y' is pink, 'o' is orange, 'k' is yellow, 'w' is green, and 'e' is purple. A white arrow points from the right side of the 'Y' towards the left, passing behind the other letters.

Yokwe

U.S. CORAL REEF TASK FORCE MEETING

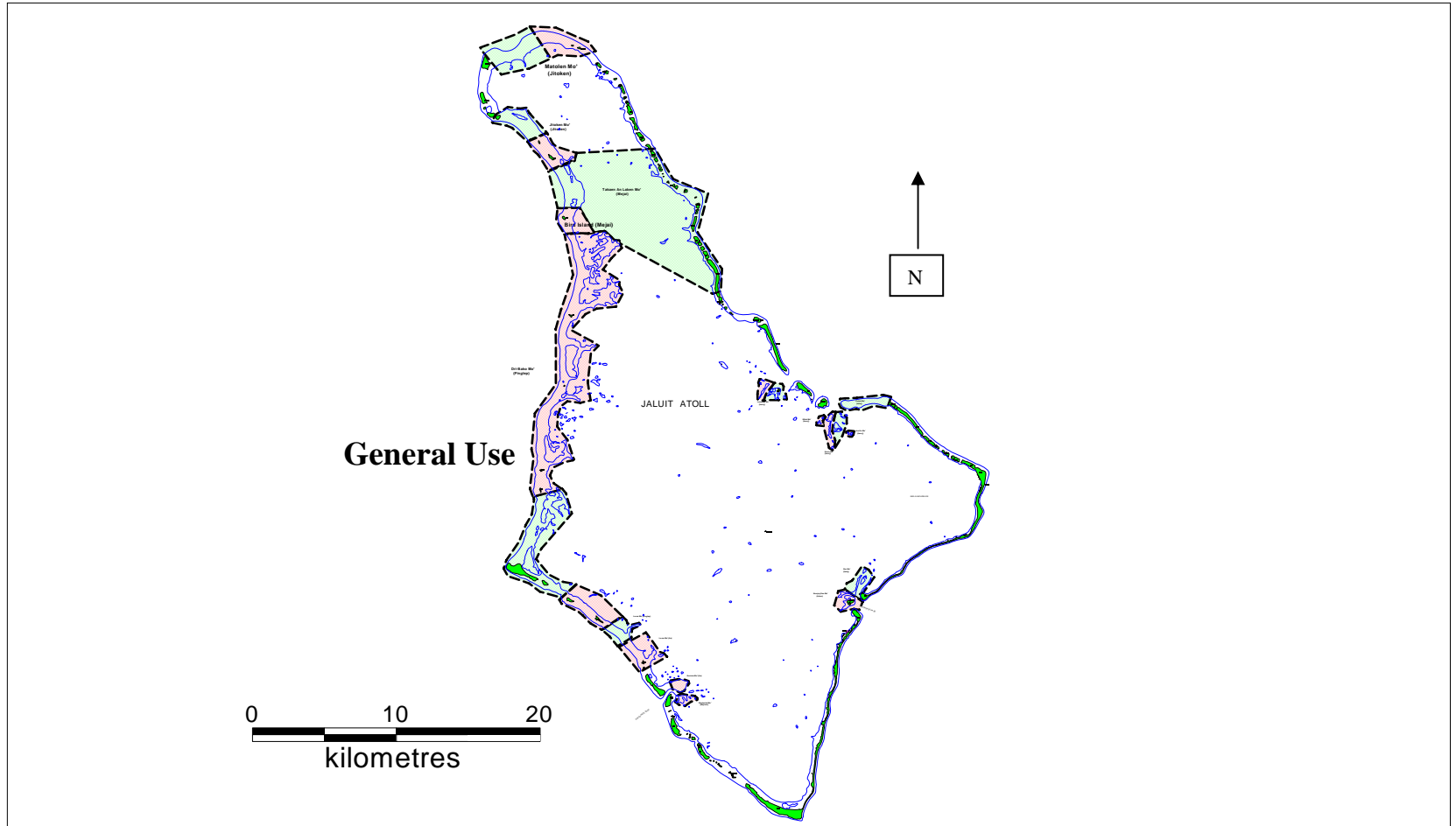
Traditional knowledge & Marine Management Practices

August 20, 2007

Examples of Traditional Knowledge and Management Practices

Overview of Jaluit Atoll

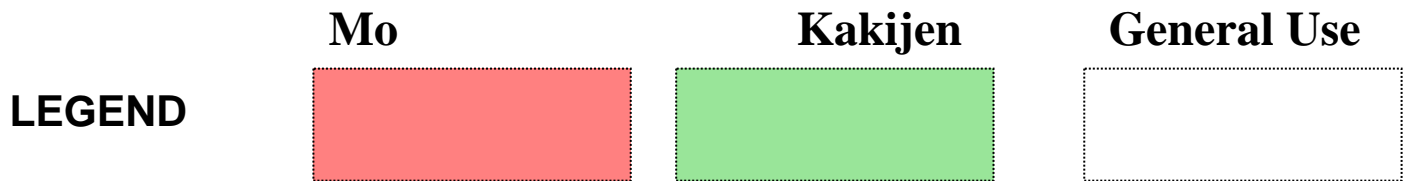
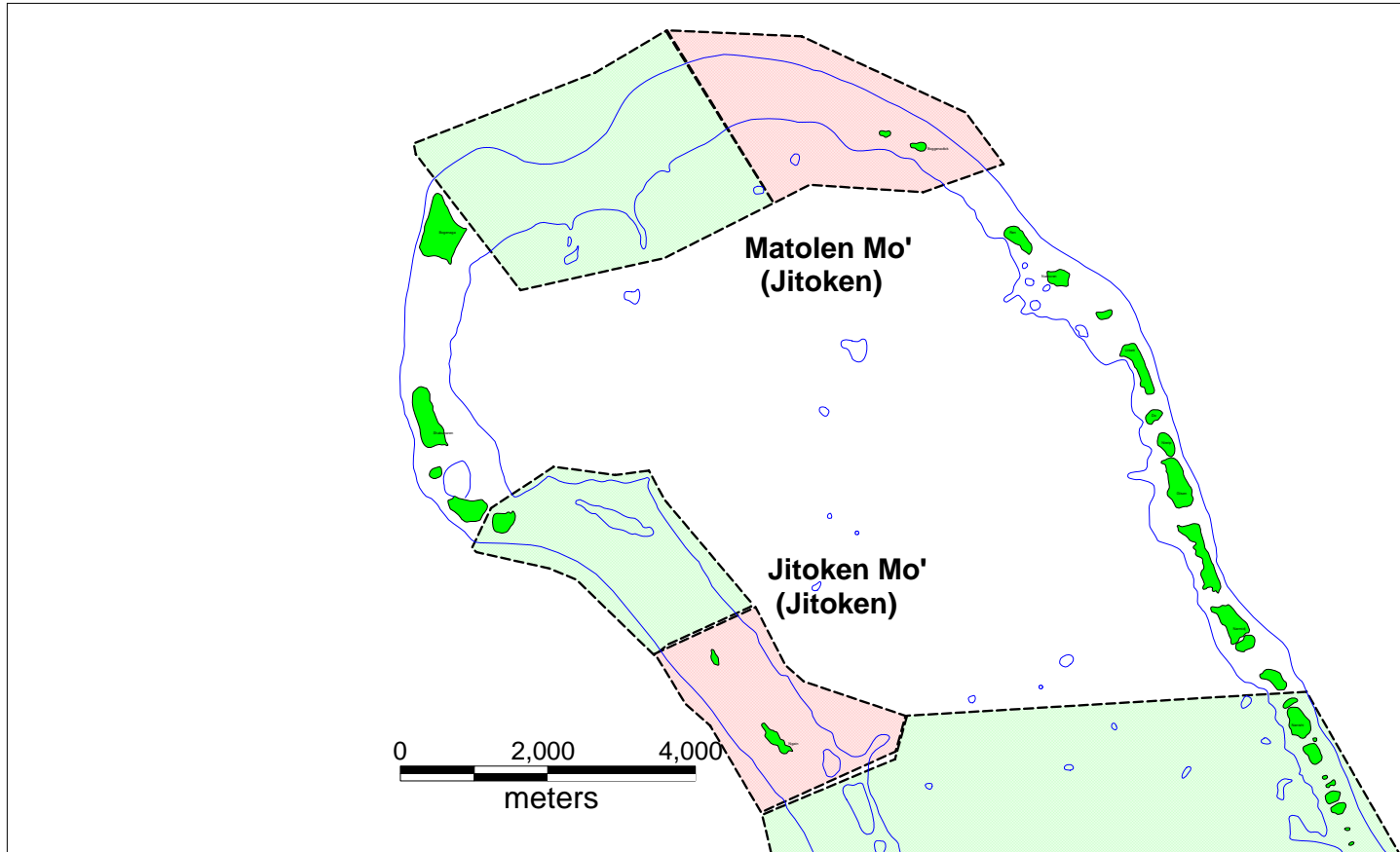
Traditional *Mos*



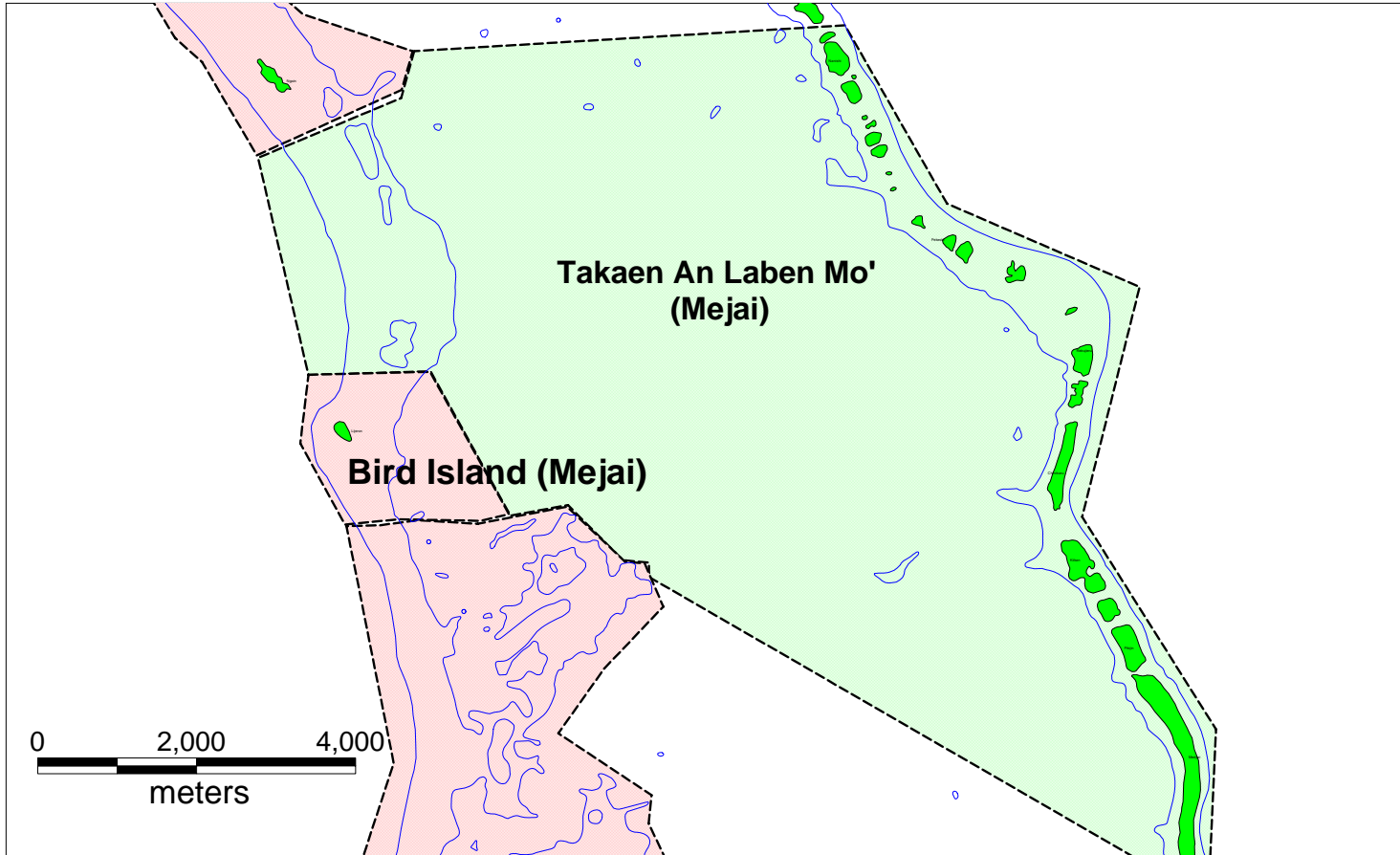
0 10 20
kilometres

- Mo 
- Jikin Kakijen 
- General Use Area 

Jitoken Community



Mejai Community



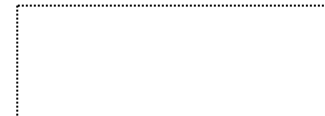
Mo



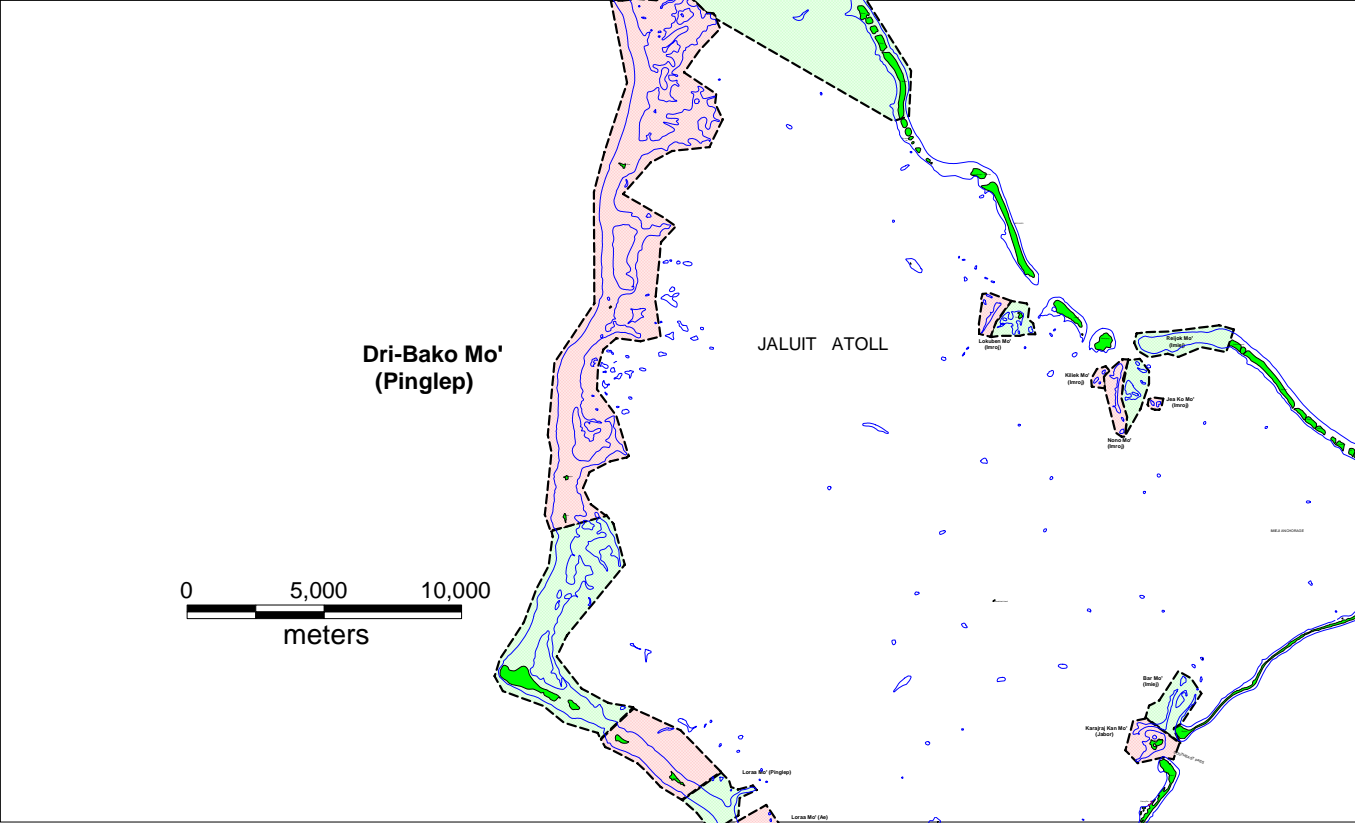
Kakijen



General Use



Pinglep Community



Mo



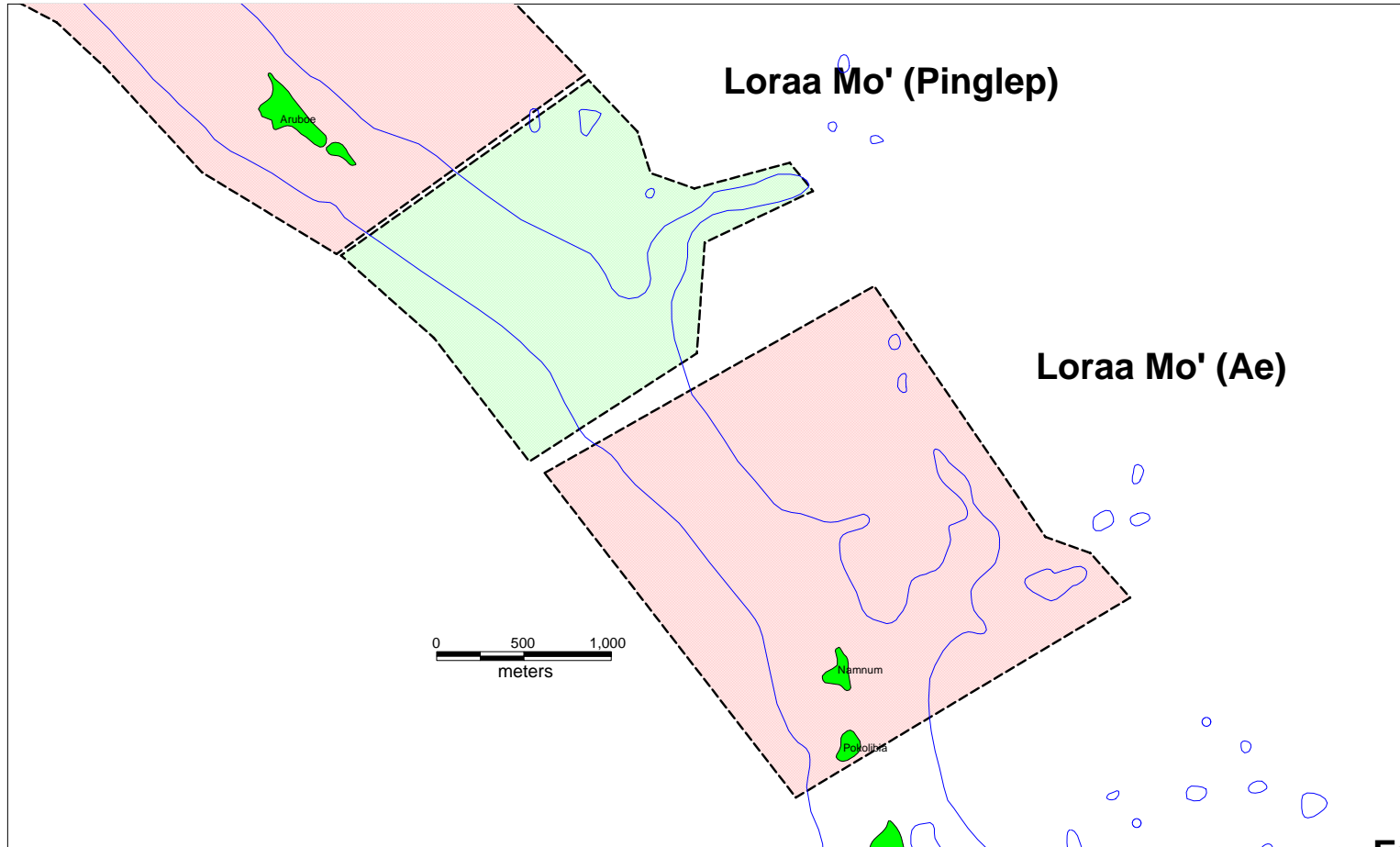
Kakijen



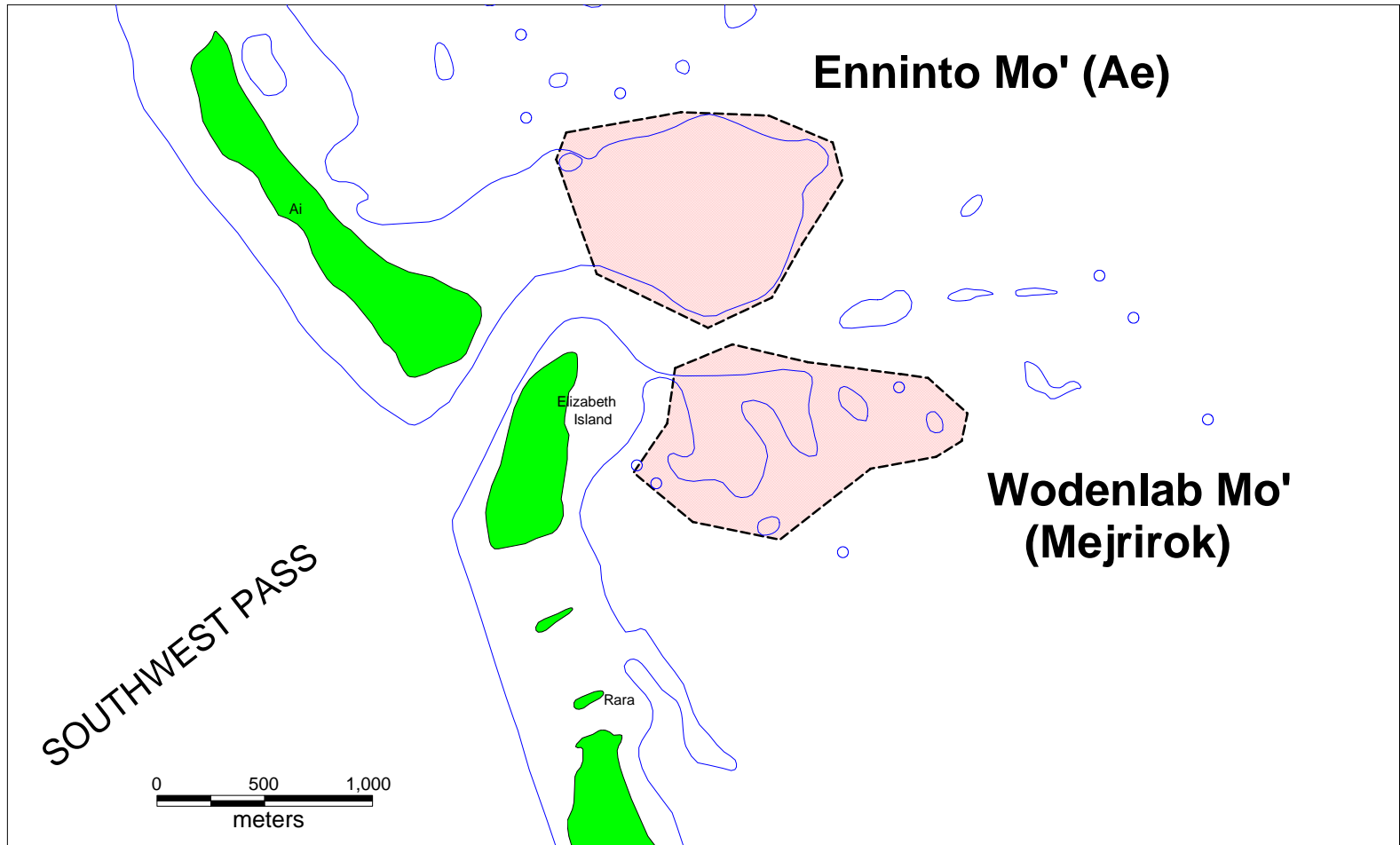
General Use



Pinglep and Ae Community



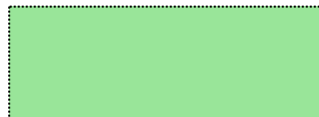
Ae and Mejrirok Community



Mo



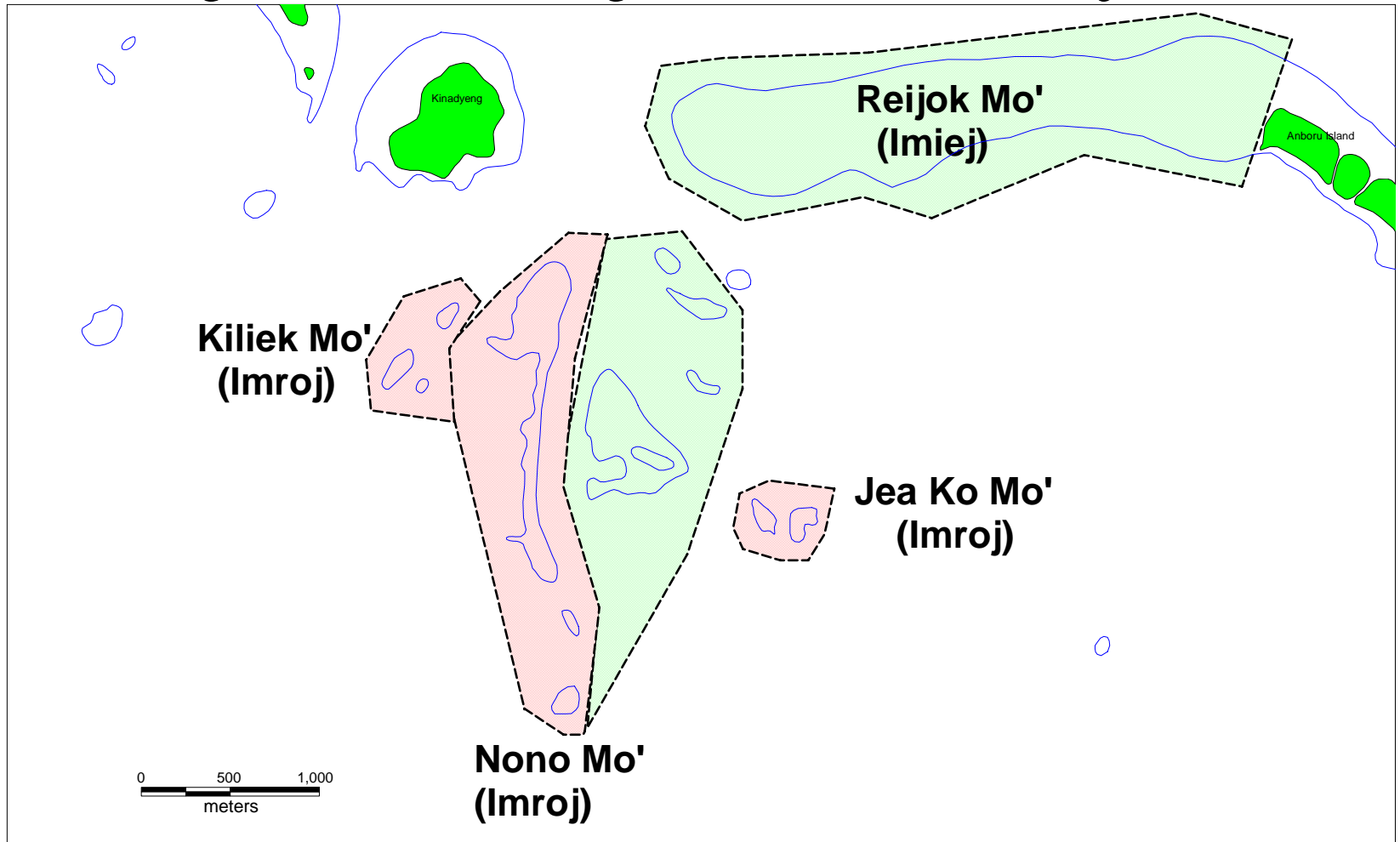
Kakijen



General Use



Imroj and Imiej Community



Mo



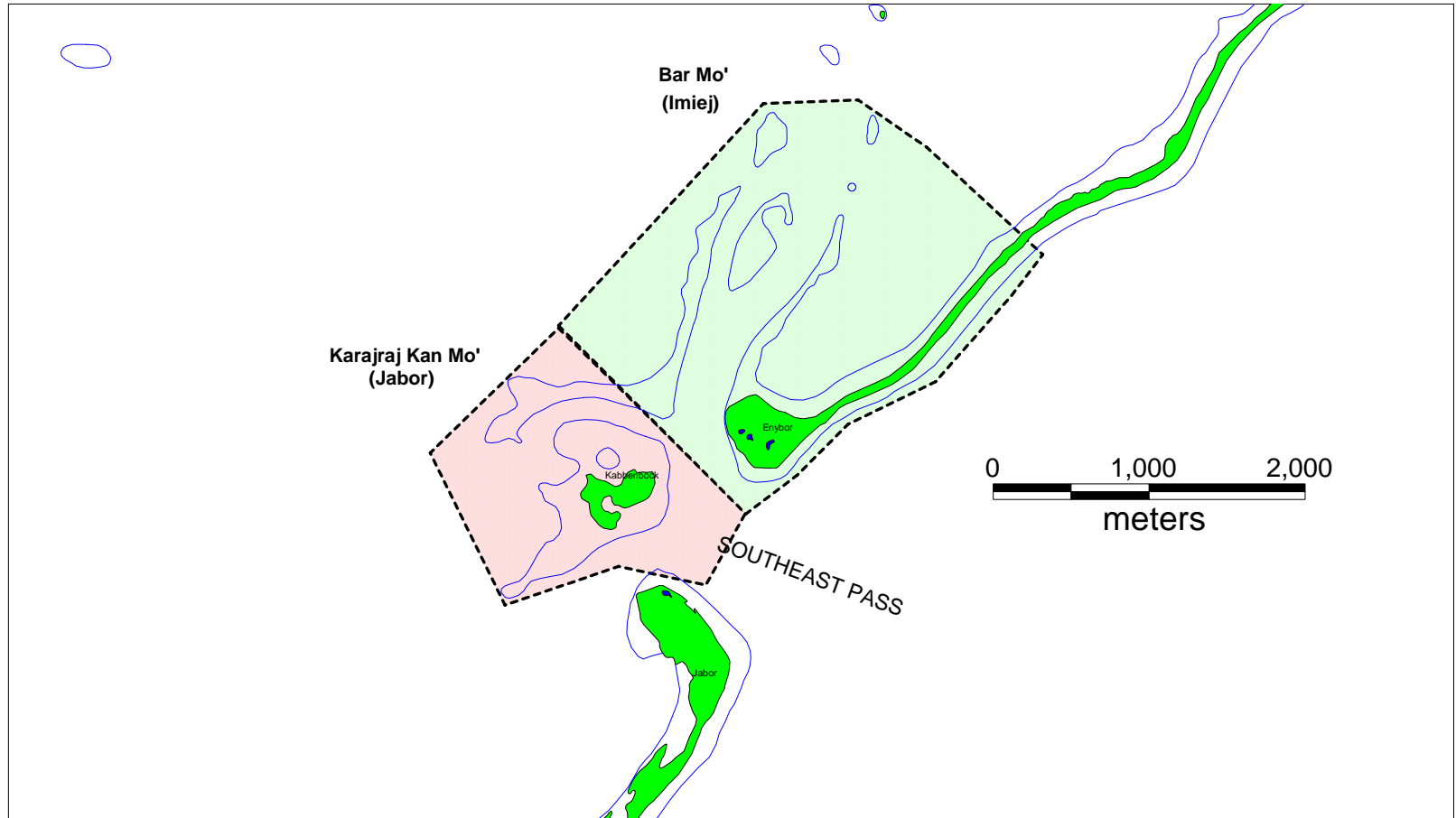
Kakijen



General Use



Jabor and Imiej Community



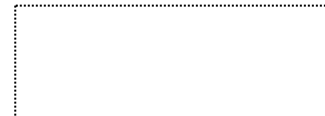
Mo



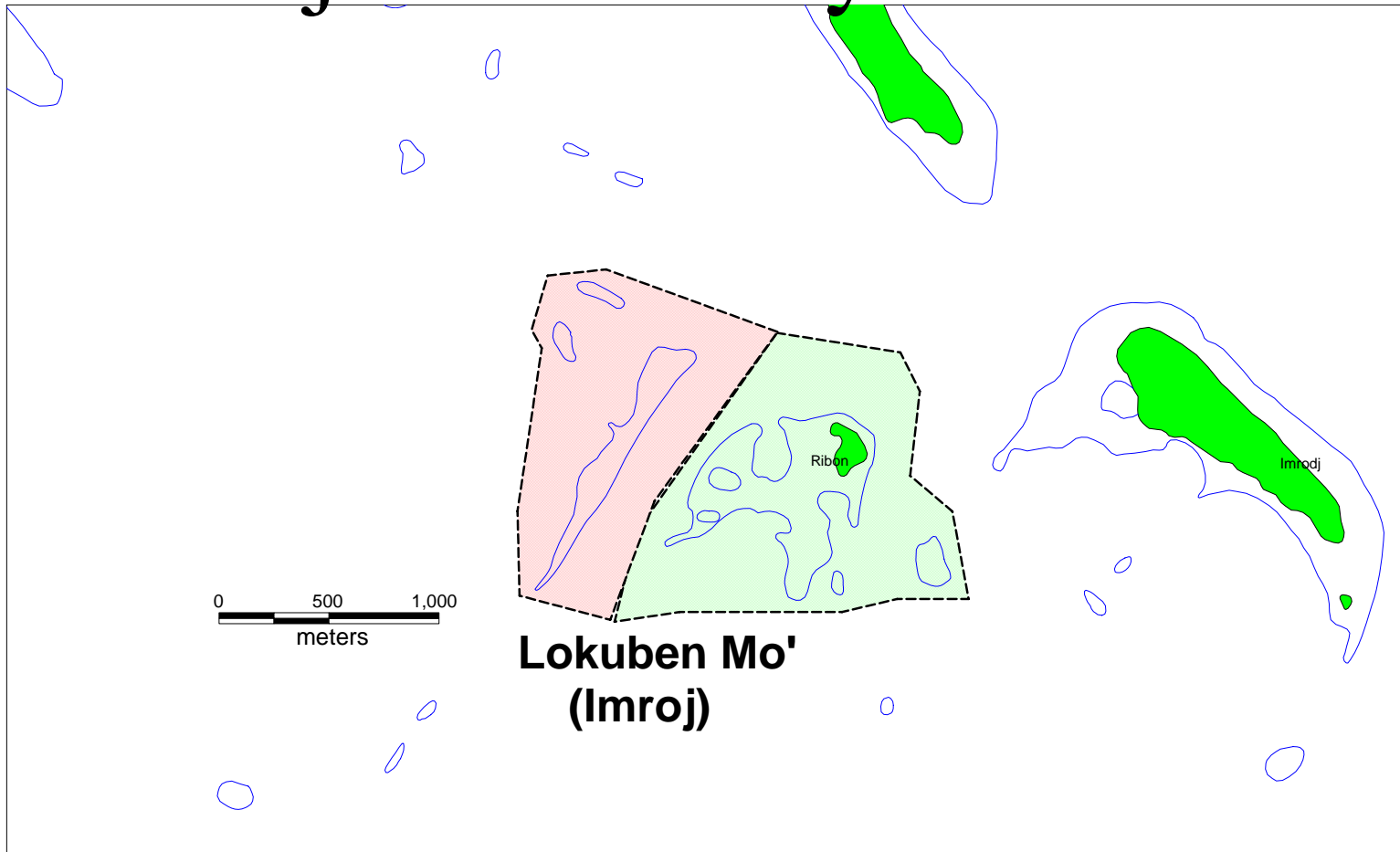
Kakijen



General Use



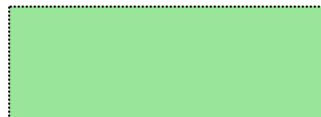
Imroj Community



Mo

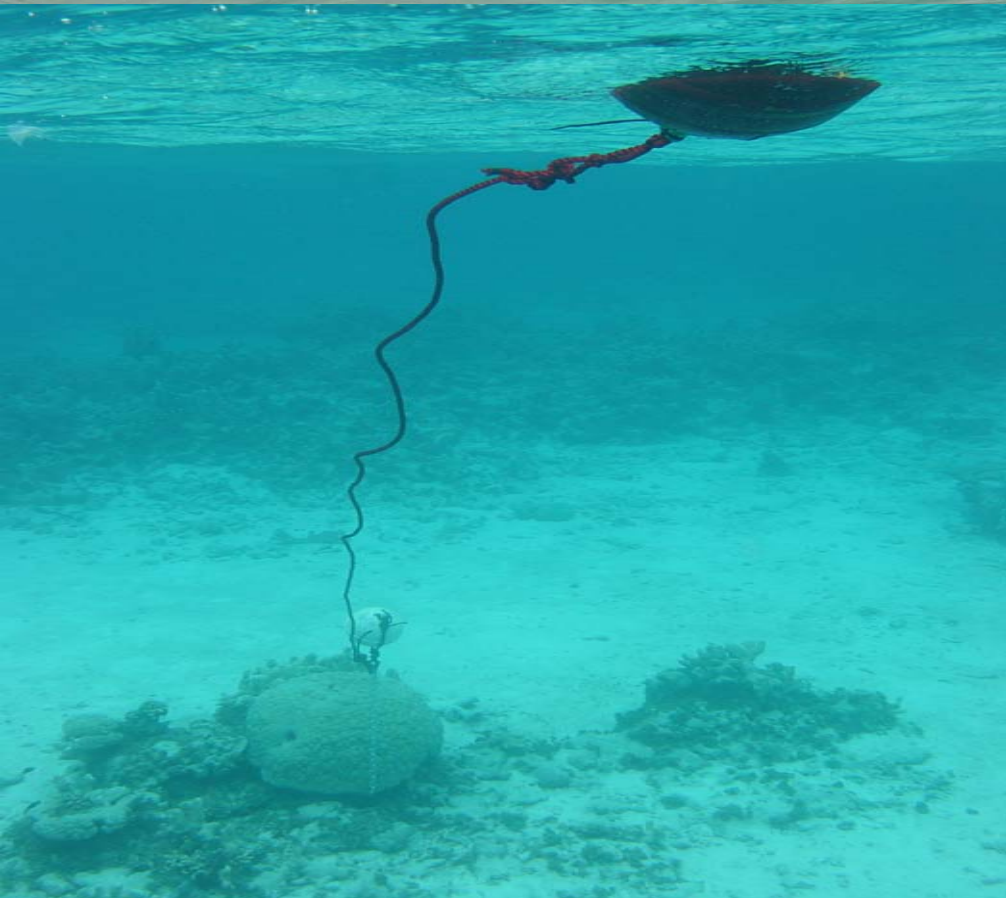
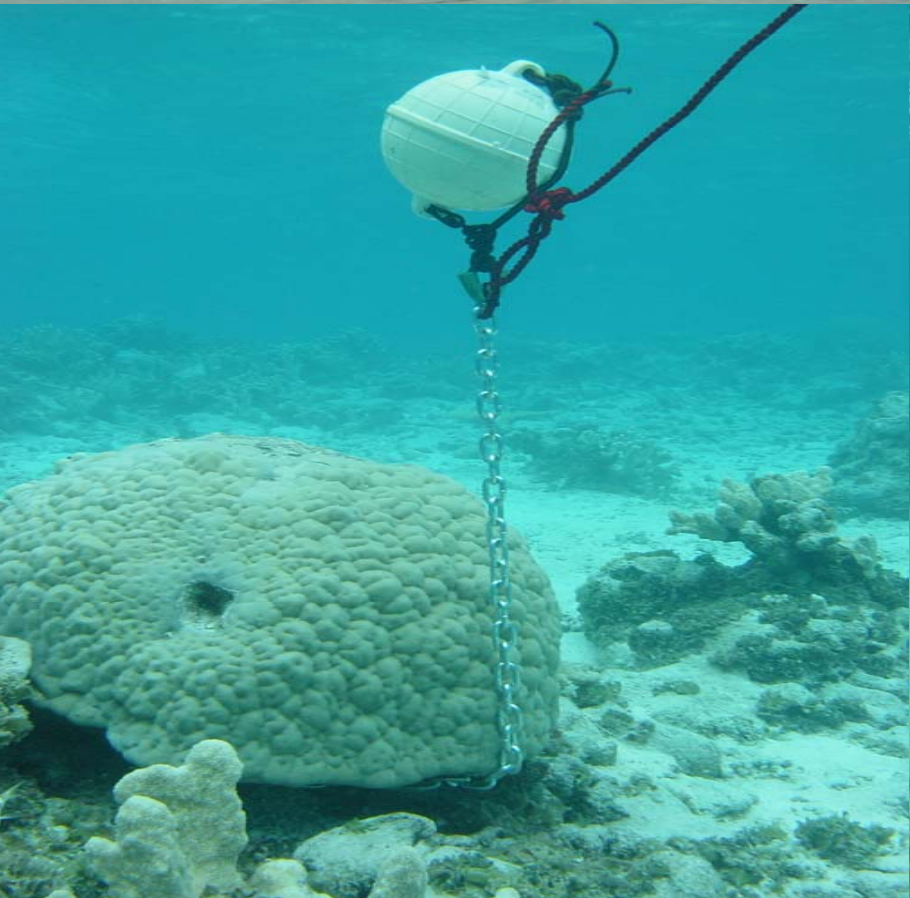


Kakijen



General Use





(2) Use of Traditional Fishing Practices

- Mei- Rock Trap
- Alele – Group fishing
- Ekonaak – Rainbow runner
- Boopu – Kajojo
- Ekkarkak – Bottom Fishing

(3) Community Respect of Traditional Mo's Stories

- Dri Bako Clan
- White Reef Heron Bird
- Mangrove Swamp Lake
- Shouting in Mangrove Forest
- Others

Mangrove



**Recommendations for
Incorporating
Traditional Knowledge
& Practices in the
Present Reef
Management Systems**

- **Strengthen Community ownership, responsibility & Accountability**
- **Establish all atoll ban for certain identified endangered marine species**
- **Allow only traditional fishing methods during certain open sessions for certain species in MPA's**
- **Establish area in the MPAs for subsistence fisheries only for certain seasons.**

Involve Traditional Leaders



Involve Community Leaders



Local Fishermen



Types of Support needed for Traditional CAs

- Funds are made available for the reactivation of the other known traditional CA's and for the ongoing monitoring activities
- Support is provided for traditional leaders' greater participation in National Planning Committees, and International Coral Reefs Conservation Conferences (Workshop Communiqué).
- Support is provided for creation of environment friendly Income generating projects in CAs
- Support of Students activities in CA including monitoring and science camps
- Record Traditional Mo Stories

Eco Tourism



WW II Relics



Divining



Traditional Canoes



Lessons Learned

- In every democratic society, there will always be one or two that support communism, likewise in any communist society there will be those who want freedom. But our success in any endeavor we pursue depends totally on our perseverance to get the community behind us.





Challenges

- **Transportation to Outer Islands**
- **Local Government's conflict of interests**
- **Competition for limited funds from outsiders and National groups**

**SOME
SUCCESS
STORIES**

JHS Environmental Health Club



Summer Science Camp



JALUIT ATOLL CONSERVATION AREA

"MO"



Diving



Mangrove



Relic



Eco Tourism

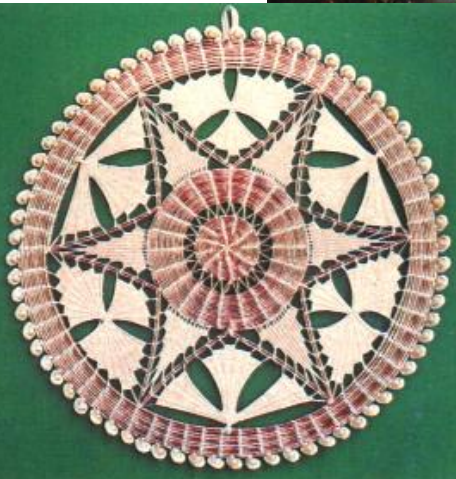


Handicraft shops



Jaluit Wöj Handicrafts Club

"Möppöörök Aohon
Kalin Ad Jen Wanöörök"



Traditional Leaders/Mayors



Vision

“ We the people of Jaluit Atoll wish to manage our resources, so that we can have enough food to eat, live in a beautiful place, practice our culture, and have opportunity to generate income from our resources”.

We want our children, and our children’s children to be able to enjoy these benefits too.

Komol Tata

A sunset scene over a body of water. The sun is low on the horizon, creating a bright reflection on the water's surface. The sky is filled with dark, dramatic clouds. In the foreground, the silhouettes of palm trees are visible against the dark water. The text 'Komol Tata' is written in a large, bold, yellow-to-orange gradient font with a white outline, slanted upwards from left to right across the top half of the image.