

# GUAM

*JURISDICTION REPORT 2008*



**USCRTF MEETING  
KONA, HAWAII  
25-29 AUGUST 2008**



# Guam prepares to host the largest military presence since World War II!



B2 Bombers over Andersen AAFB



Navy ship entering Apra Harbor

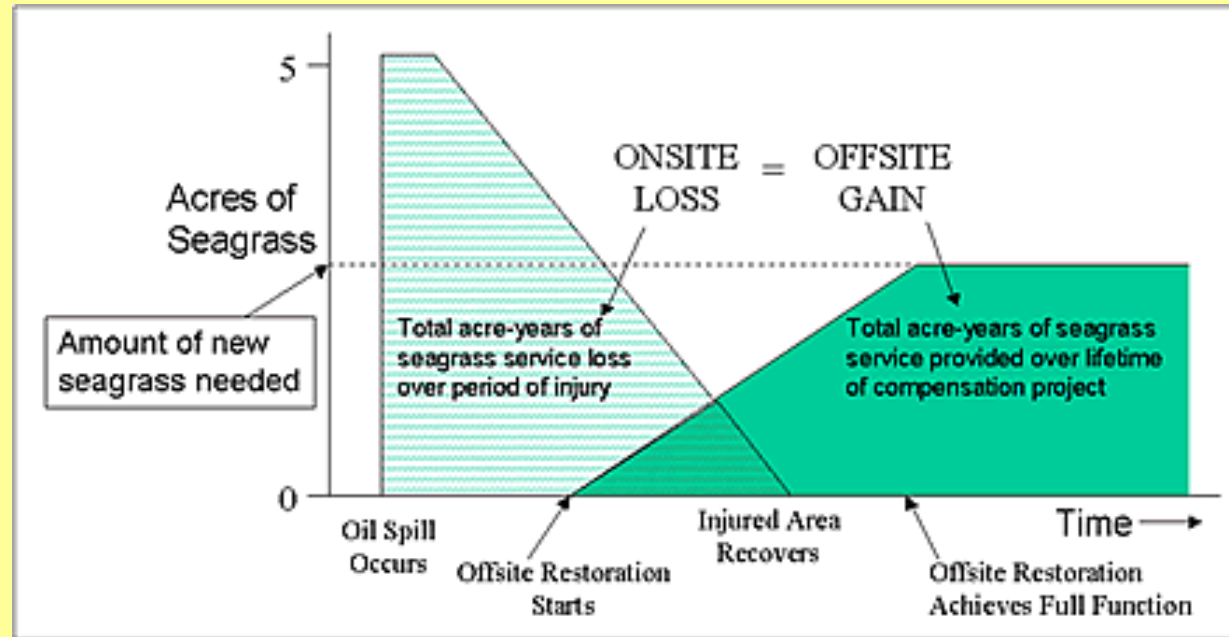


EODMU5 Static Line Jumping – Yigo, GU



Marines - Island-wide Exercises

# Thanks Don!

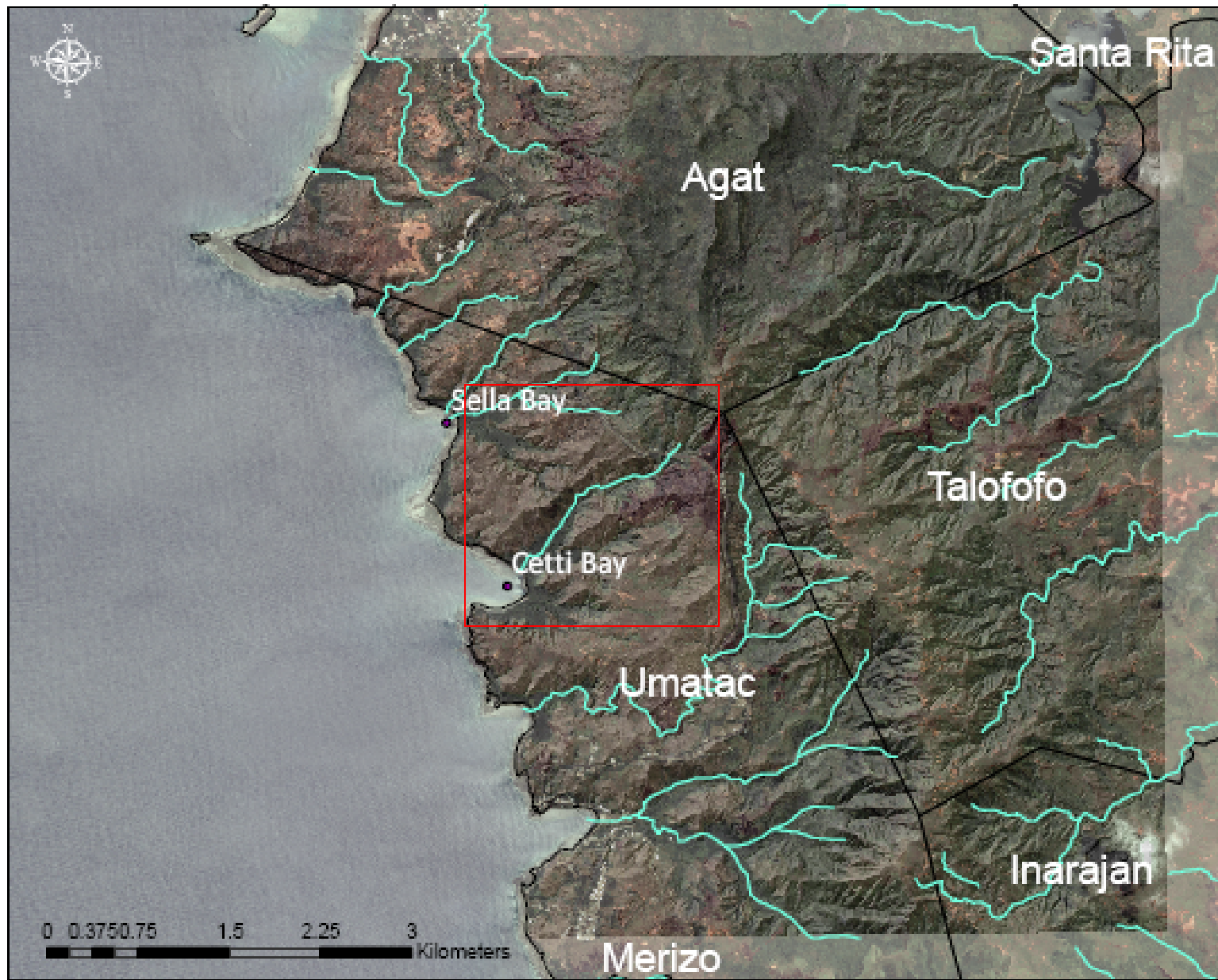


HABITAT EQUIVALENCY MODEL (From NOAA 1995).

for his foresight and advocacy of new tools for better, more meaningful mitigation work using the HEA model and off site mitigation programs.

# Cetti Bay Site Map

- Watershed Restoration (Mitigation for Kilo Wharf)



## Legend

- SellaCetti
- Rivers/Streams

Projected Coordinate System:  
WGS 1984 UTM Zone 55N

Geographic Coordinate System:  
GCS WGS 1984

Cetti Bay – Site of Future Watershed  
Restoration (Mitigation for Kilo Wharf)



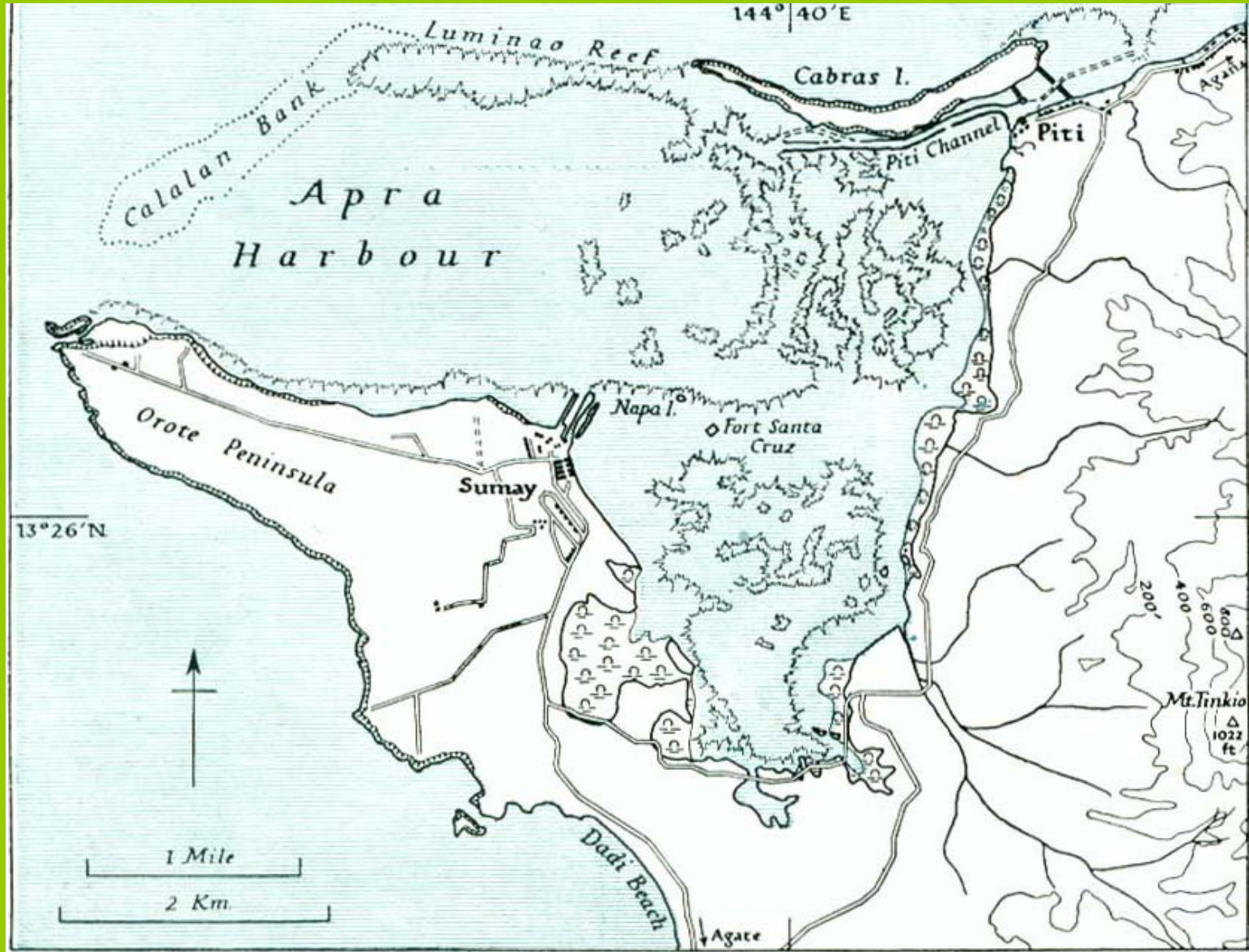
However, the work to prepare our island  
for the buildup is only just beginning...



# Continuous Development & Increasing Population



# Apra Harbor – Prior to Military Development



Apra Harbor was home to amazing reefs.



Despite the increased development and boat traffic, Apra Harbor still has functional coral reef ecosystems! Some species are found nowhere else on Guam!

Luminao Reef

Glass Breakwater

Commercial Port

Drydock Island

# Apra Harbor

Orote Peninsula

Guam Shipyard

Polaris Point

Inner Apra



# Apra Harbor



# SUPPORT LOCAL ACTION STRATEGIES!

FISHERY MANAGEMENT

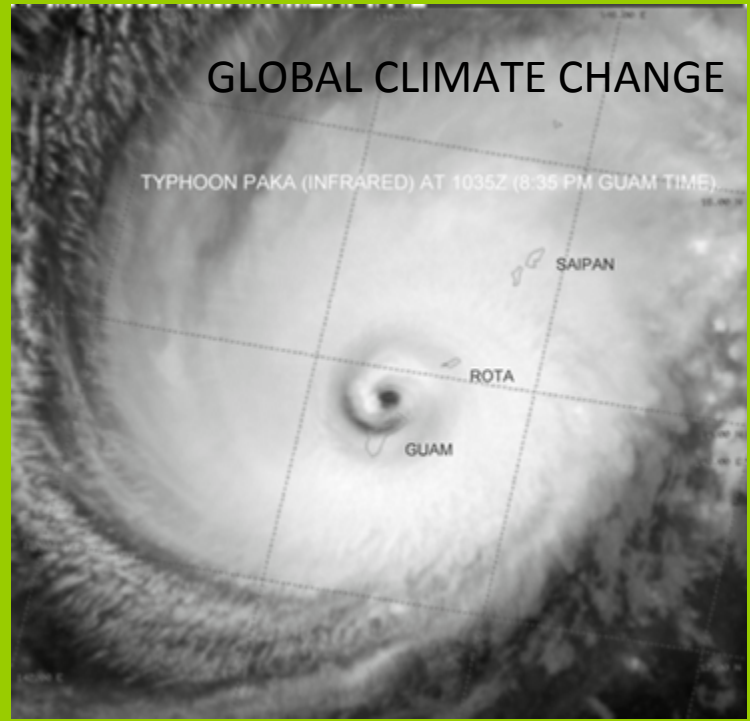


LACK OF AWARENESS



REC. MISUSE

# SUPPORT LOCAL ACTION STRATEGIES!



# SUPPORT LOCAL MONITORING!



# Thanks Bill, Jen and CWP!

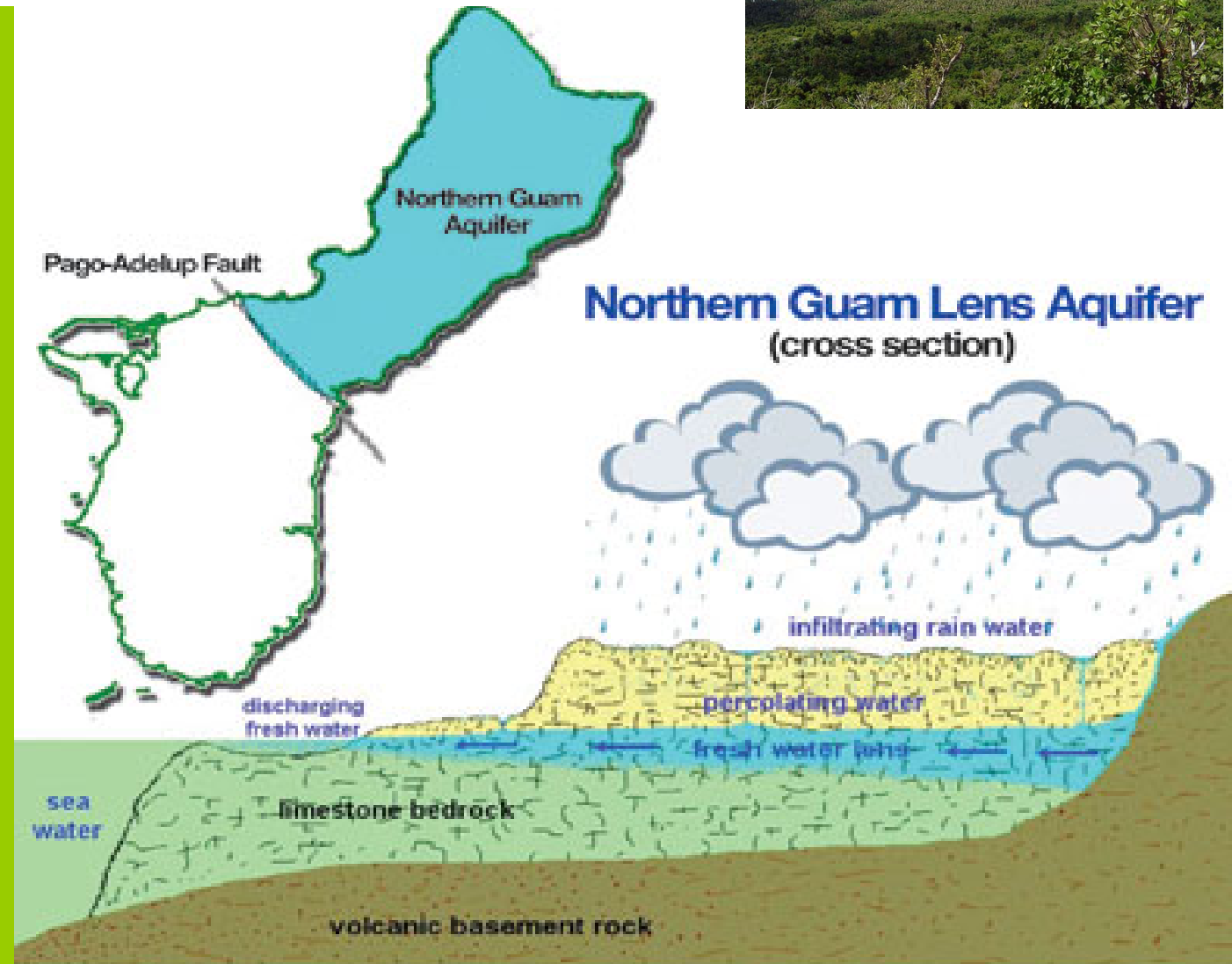


**CENTER FOR  
WATERSHED  
PROTECTION**

8390 Main Street, 2<sup>nd</sup> Floor  
Ellicott City, MD 21043  
410.461.8323  
FAX 410.461.8324  
[www.cwp.org](http://www.cwp.org)  
[www.stormwatercenter.net](http://www.stormwatercenter.net)

For assisting in the development of Guam's rules and regulations for stormwater management.

Better protection of our aquifer and other freshwater resources helps provide safe, clean drinking water while reducing pollution and erosion that harm our reefs.



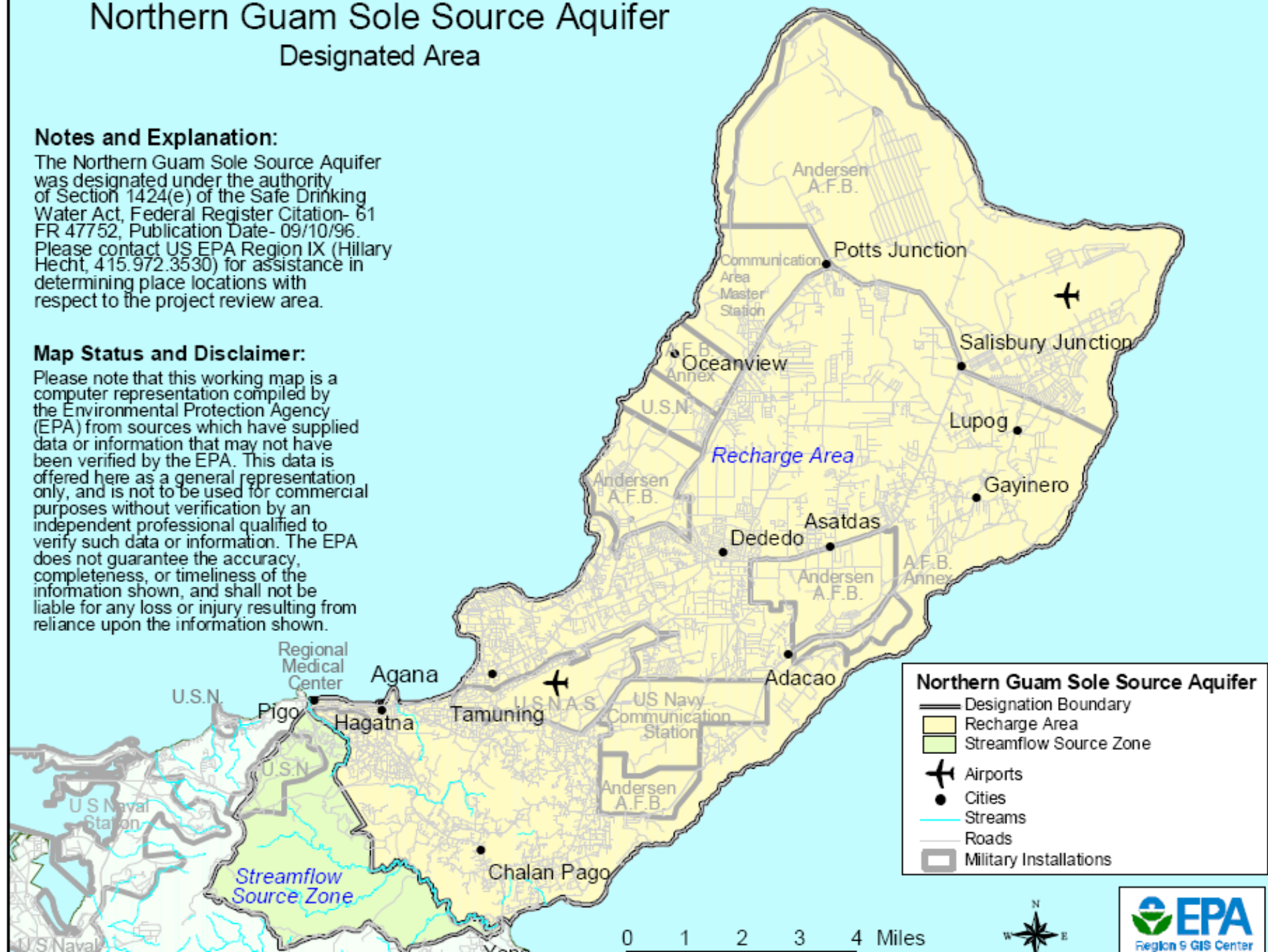
# Northern Guam Sole Source Aquifer Designated Area

## Notes and Explanation:

The Northern Guam Sole Source Aquifer was designated under the authority of Section 1424(e) of the Safe Drinking Water Act, Federal Register Citation- 61 FR 47752, Publication Date- 09/10/96. Please contact US EPA Region IX (Hillary Hecht, 415.972.3530) for assistance in determining place locations with respect to the project review area.

## Map Status and Disclaimer:

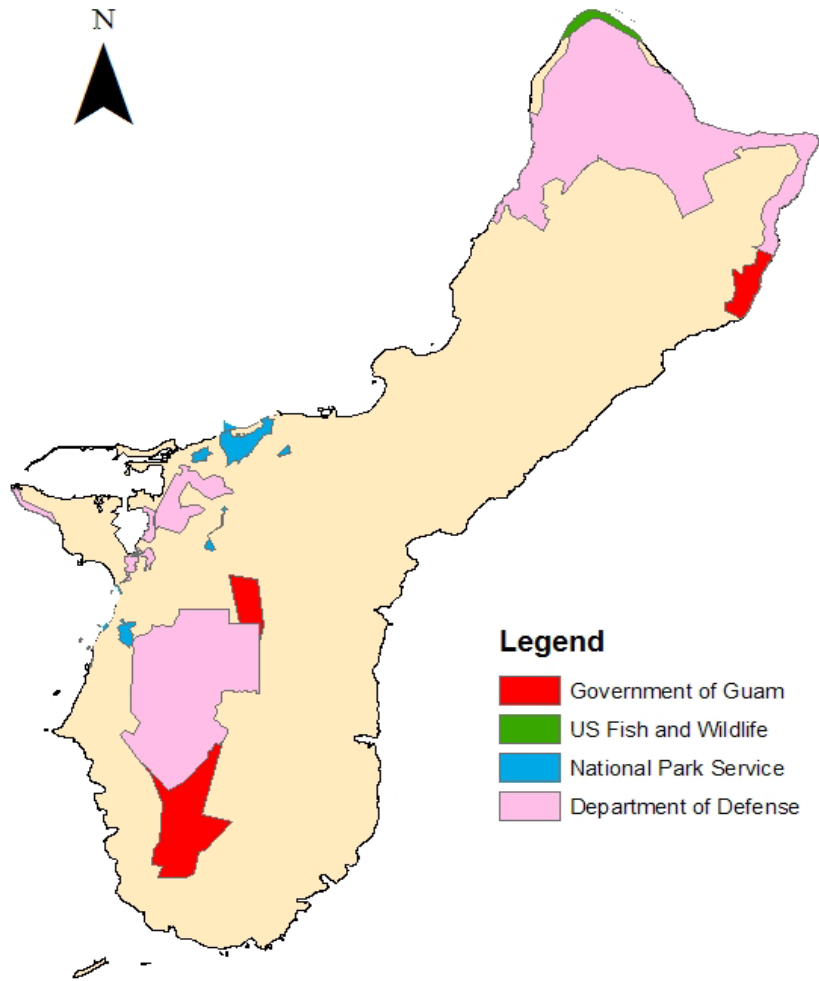
Please note that this working map is a computer representation compiled by the Environmental Protection Agency (EPA) from sources which have supplied data or information that may not have been verified by the EPA. This data is offered here as a general representation only, and is not to be used for commercial purposes without verification by an independent professional qualified to verify such data or information. The EPA does not guarantee the accuracy, completeness, or timeliness of the information shown, and shall not be liable for any loss or injury resulting from reliance upon the information shown.





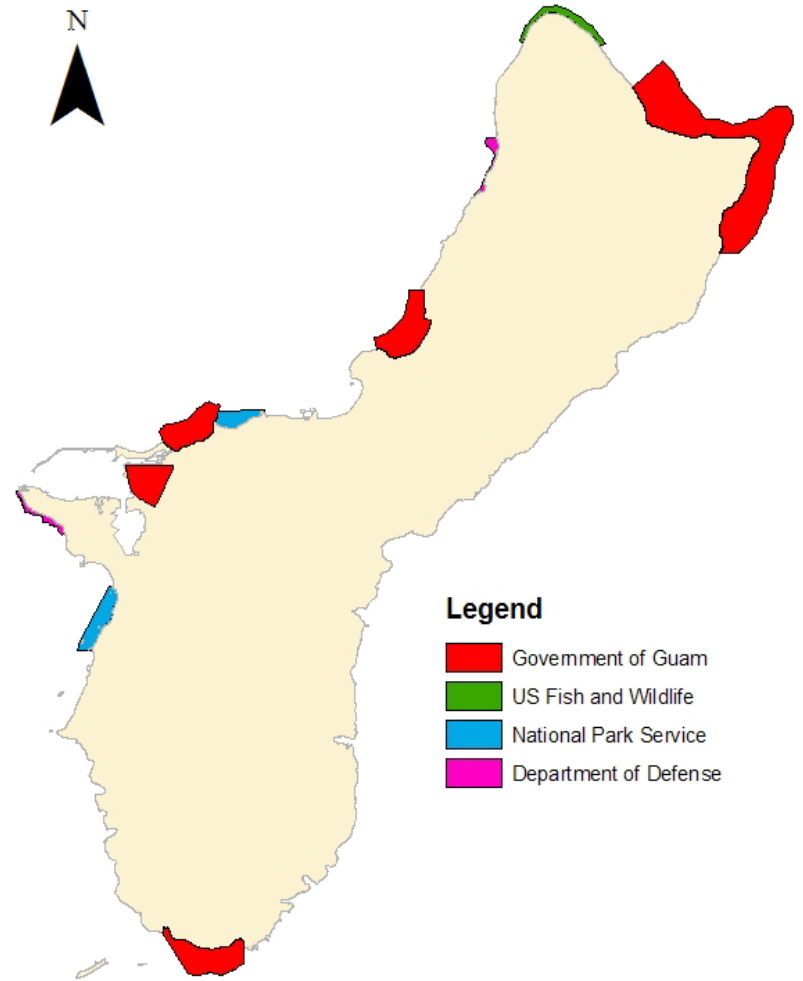
# MICRONESIA CHALLENGE - GUAM

## Current Terrestrial Managed Areas



**Total Area: 123.86 km<sup>2</sup> (22%)**

## Current Marine Managed Areas



**Total Area: 42.63 km<sup>2</sup> (15.45%)**

Bio-security measures must be taken! We don't want another brown tree snake!

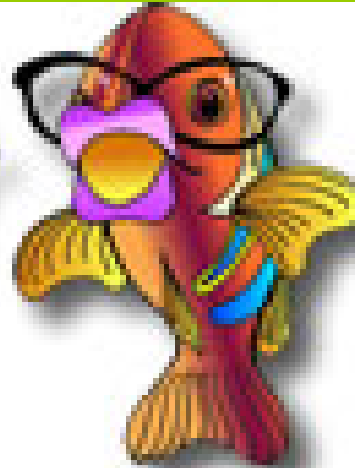




# WE NEED LOCAL AGENCIES



"Our Coasts,  
Our Future"



# AND FEDERAL PARTNERS, IN ORDER TO...



# PROTECT OUR REEFS!

LEAVE NOTHING BEHIND! TUMON BAY IS ONE OF GUAM'S FIVE MARINE PROTECTED AREAS WHICH HAS BEEN SET ASIDE TO PROTECT AQUATIC ANIMALS AND CORAL REEF HABITATS.

LEARN MORE. [www.bspguam.com](http://www.bspguam.com)



OUR COASTS. OUR FUTURE.



Photo: © Tim Rock. Design: NVD 77mkt.org

**Si yu'us ma'ase!**