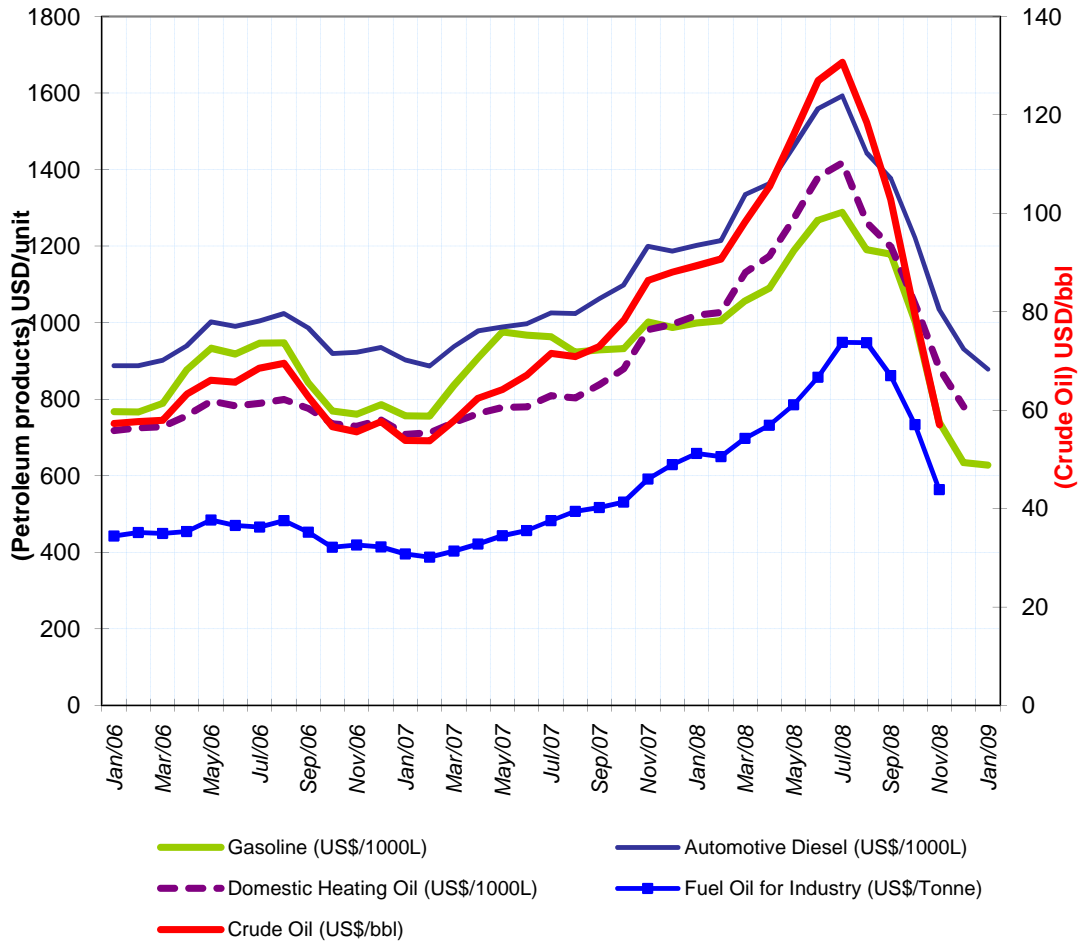




END-USER PETROLEUM PRODUCT PRICES AND AVERAGE CRUDE OIL IMPORT COSTS

January 2009

INTERNATIONAL ENERGY AGENCY
AGENCE INTERNATIONALE DE L'ENERGIE
9, rue de la Fédération, 75739 PARIS CEDEX 15 FRANCE
prices@iea.org



* Weighted average price including taxes using current exchange rates for France, Germany, Italy, Spain, UK, Japan, Canada and USA.

For the two most recent months, consumption is estimated based on the previous year.

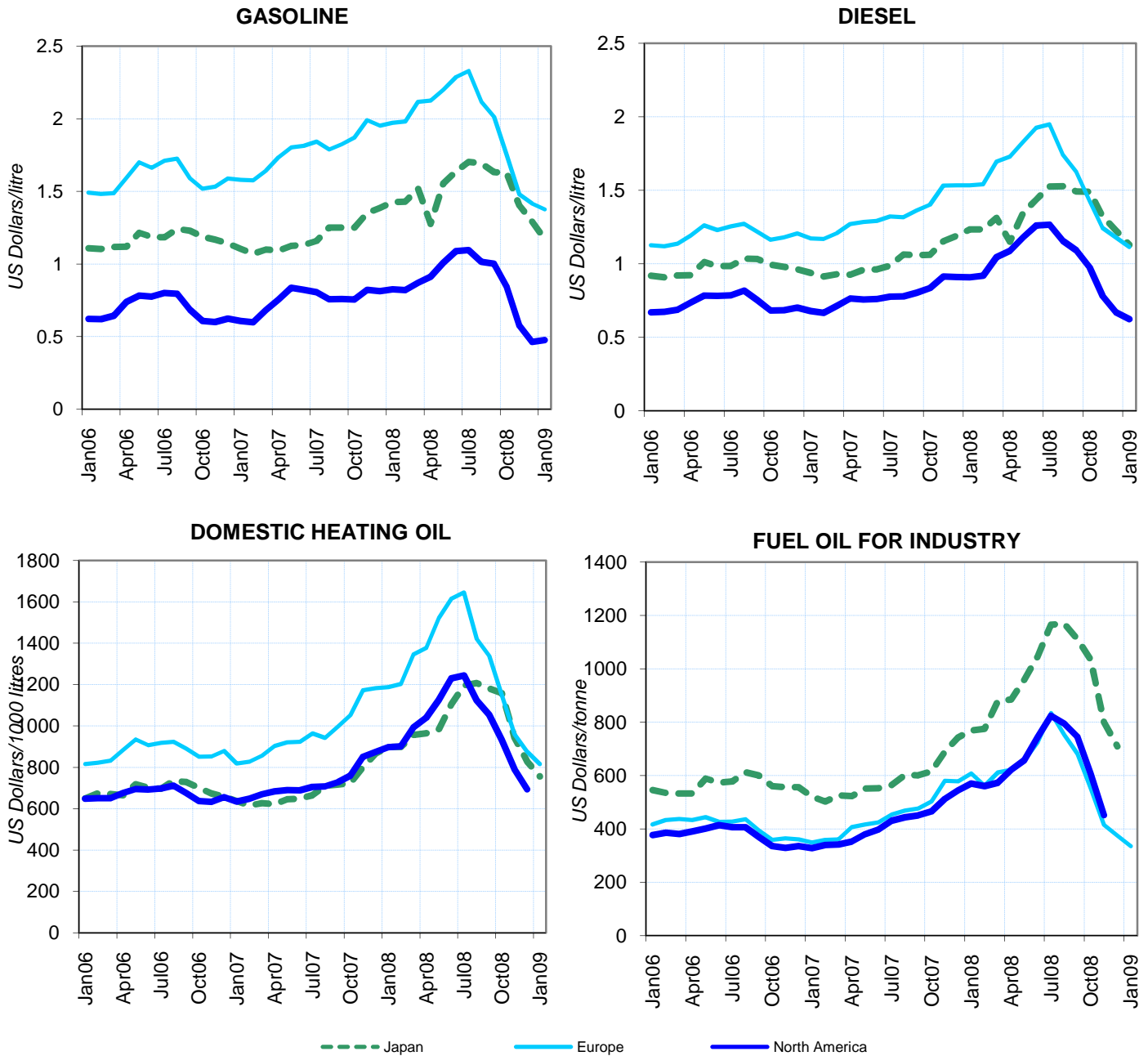
© OECD/IEA, 2009



END-USER PETROLEUM PRODUCT PRICES AND AVERAGE CRUDE OIL IMPORT COSTS

January 2009

END-USE PRICES FOR PETROLEUM PRODUCTS *



* Europe includes France, Germany, Italy, Spain and the United Kingdom; North America includes the United States and Canada.

Weighted average price including taxes. For the two most recent months, consumption is estimated based on the previous year.



END-USER PETROLEUM PRODUCT PRICES AND AVERAGE CRUDE OIL IMPORT COSTS

January 2009

AVERAGE END-USE PRICES *

	NATIONAL CURRENCY *						US DOLLARS					
	Total Price	% change from		Ex-Tax Price	% change from		Total Price	% change from		Ex-Tax Price	% change from	
		Dec-08	Jan-08		Dec-08	Jan-08		Dec-08	Jan-08		Dec-08	Jan-08
GASOLINE ¹ (Price per Litre)												
France	1.087	-0.9	-19.1	0.303	-2.6	-42.0	1.433	-2.6	-27.5	0.400	-4.3	-47.9
Germany	1.128	1.3	-18.8	0.293	4.3	-42.8	1.488	-0.5	-27.2	0.386	2.4	-48.7
Italy	1.111	-1.1	-16.9	0.362	-2.7	-34.2	1.465	-2.8	-25.5	0.477	-4.4	-41.0
Spain	0.847	-1.7	-20.7	0.334	-3.7	-36.4	1.117	-3.5	-28.9	0.440	-5.4	-43.0
UK	0.864	-3.7	-16.6	0.227	-11.3	-39.9	1.249	-6.3	-38.8	0.328	-13.8	-55.9
Japan	105.9	-10.2	-31.2	45.1	-20.2	-50.3	1.174	-9.1	-17.7	0.500	-19.3	-40.6
Canada	0.797	3.2	-24.7	0.485	5.2	-34.3	0.649	4.0	-37.9	0.395	6.0	-45.8
USA	0.463	2.7	-42.8	0.357	3.5	-49.3	0.463	2.7	-42.8	0.357	3.5	-49.3
AUTOMOTIVE DIESEL FOR COMMERCIAL USE ² (Price per Litre)												
France	0.819	-3.9	-19.2	0.391	-7.8	-33.5	1.080	-5.6	-27.6	0.516	-9.4	-40.4
Germany	0.878	-1.7	-17.9	0.408	-3.5	-31.9	1.158	-3.4	-26.3	0.538	-5.2	-38.9
Italy	0.880	-4.5	-15.9	0.452	-8.3	-27.4	1.160	-6.1	-24.6	0.596	-9.9	-34.9
Spain	0.736	-4.8	-18.9	0.434	-7.9	-28.3	0.971	-6.5	-27.2	0.572	-9.5	-35.7
UK	0.857	-4.6	-7.2	0.333	-11.0	-20.5	1.239	-7.2	-31.8	0.481	-13.4	-41.6
Japan	101.9	-9.0	-23.4	64.5	-13.0	-31.5	1.129	-8.0	-8.4	0.715	-12.0	-18.1
Canada	0.912	-5.7	-19.1	0.661	-7.3	-23.9	0.743	-5.0	-33.3	0.538	-6.6	-37.3
USA	0.607	-7.3	-31.0	0.484	-9.0	-36.1	0.607	-7.3	-31.0	0.484	-9.0	-36.1
DOMESTIC HEATING OIL (Price per 1000 Litres)												
France	580.99	-4.6	-25.5	429.18	-5.2	-27.9	766.2	-6.3	-33.2	566.0	-6.9	-35.4
Germany	558.28	0.1	-23.1	407.79	0.1	-25.6	736.2	-1.7	-31.0	537.8	-1.6	-33.3
Italy	1022.02	-4.5	-15.6	448.47	-8.2	-25.9	1347.8	-6.2	-24.3	591.4	-9.8	-33.6
Spain	537.05	-8.3	-27.0	378.26	-9.9	-31.2	708.2	-9.9	-34.6	498.8	-11.5	-38.3
UK	424.12	-3.8	-14.5	303.22	-5.0	-19.2	613.0	-6.4	-37.2	438.2	-7.6	-40.7
Japan ³	68223	-9.6	-29.7	62934	-9.9	-30.4	755.8	-8.6	-16.0	697.2	-8.9	-16.8
Canada	788	-5.5	-22.3	710	-5.8	-23.8	641.8	-4.8	-36.0	577.9	-5.1	-37.2
USA
LOW SULPHUR FUEL OIL FOR INDUSTRY ² (Price per Metric Ton)												
France	229.45	-9.9	-39.4	210.95	-10.6	-41.5	302.6	-11.5	-45.7	278.2	-12.2	-47.5
Germany	231.07	-10.3	-36.7	206.07	-11.4	-39.4	304.7	-11.9	-43.2	271.8	-13.0	-45.6
Italy	269.73	-8.2	-36.7	238.34	-9.2	-39.7	355.7	-9.9	-43.3	314.3	-10.8	-45.9
Spain	283.46	-8.4	-33.8	268.46	-8.8	-35.0	373.8	-10.0	-40.6	354.0	-10.4	-41.7
UK
Japan
Canada
USA

1 Unleaded premium (95 RON) for France, Germany, Italy, Spain, UK; regular unleaded for Canada, Japan and the United States.

2 VAT excluded from prices for automotive diesel and low sulphur fuel oil when refunded to industry.

3 Kerosene for Japan.

* Prices for France, Germany, Italy and Spain are in Euro; UK in British Pounds, Japan in Yen, Canada in Canadian Dollars.

© OECD/IEA, 2009



END-USER PETROLEUM PRODUCT PRICES AND AVERAGE CRUDE OIL IMPORT COSTS

January 2009

AVERAGE END-USE PRICES *

	Feb08	Mar08	Apr08	May08	Jun08	Jul08	Aug08	Sep08	Oct08	Nov08	Dec08	Jan09
GASOLINE ¹ (Price per Litre)												
France	1.347	1.371	1.375	1.427	1.484	1.478	1.420	1.420	1.326	1.188	1.097	1.087
Germany	1.374	1.423	1.403	1.461	1.508	1.515	1.460	1.447	1.348	1.204	1.114	1.128
Italy	1.364	1.378	1.372	1.456	1.512	1.520	1.456	1.438	1.345	1.208	1.123	1.111
Spain	1.095	1.114	1.118	1.179	1.232	1.248	1.184	1.168	1.082	0.940	0.862	0.847
UK	1.041	1.061	1.077	1.114	1.174	1.189	1.134	1.120	1.056	0.953	0.897	0.864
Japan	153.0	153.0	131.0	162.1	175.1	182.0	185.0	174.0	163.0	136.0	117.9	105.9
Canada	1.069	1.103	1.180	1.278	1.357	1.363	1.285	1.304	1.089	0.876	0.772	0.797
USA	0.800	0.854	0.893	0.986	1.068	1.075	0.998	0.983	0.837	0.567	0.451	0.463
AUTOMOTIVE DIESEL FOR COMMERCIAL USE ² (Price per Litre)												
France	1.004	1.057	1.068	1.145	1.207	1.195	1.120	1.098	1.036	0.947	0.852	0.819
Germany	1.062	1.118	1.107	1.188	1.246	1.242	1.168	1.132	1.083	0.998	0.893	0.878
Italy	1.064	1.115	1.140	1.208	1.261	1.268	1.198	1.160	1.089	0.999	0.921	0.880
Spain	0.918	0.970	0.977	1.057	1.109	1.123	1.042	1.013	0.949	0.851	0.773	0.736
UK	0.931	0.957	0.989	1.039	1.108	1.126	1.070	1.053	0.999	0.927	0.898	0.857
Japan	132.0	132.0	118.0	140.5	153.5	162.9	166.9	158.9	149.0	128.0	112.0	101.9
Canada	1.101	1.225	1.295	1.365	1.449	1.462	1.360	1.305	1.243	1.120	0.967	0.912
USA	0.892	1.020	1.065	1.156	1.237	1.239	1.136	1.068	0.965	0.760	0.655	0.607
DOMESTIC HEATING OIL (Price per 1000 Litres)												
France	771.42	822.13	832.76	925.67	994.90	997.45	910.46	884.80	810.17	699.64	609.24	580.99
Germany	735.56	783.31	797.67	898.21	956.24	954.26	886.55	864.57	811.50	706.47	557.75	558.28
Italy	1223.98	1285.21	1292.64	1394.98	1453.85	1464.68	1379.15	1347.25	1271.22	1161.83	1070.28	1022.02
Spain	742.93	798.61	806.79	897.45	971.27	982.09	889.30	864.15	791.58	681.81	585.50	537.05
UK	509.57	543.73	574.60	649.35	694.07	701.48	634.88	623.20	547.08	491.33	440.77	424.12
Japan ³	96203	96370	99011	102724	118295	127778	132000	125889	116000	91389	75500	68223
Canada	1024.75	1107.00	1187.25	1265.90	1375.25	1367.60	1256.50	1179.00	1079.40	933.75	834.25	788.20
USA	881.80	977.20	1023.70	1105.60	1212.30	1228.10	1114.00	1044.00	936.20	793.30	696.60	..
LOW SULPHUR FUEL OIL FOR INDUSTRY ² (Price per Metric Ton)												
France	375.16	381.81	396.82	433.72	472.23	525.24	489.79	452.27	385.56	275.36	254.58	229.45
Germany	352.63	365.81	362.75	379.34	414.94	497.51	484.90	454.42	396.63	316.88	257.65	231.07
Italy	410.72	419.27	426.72	463.47	508.69	557.05	519.31	485.86	426.59	339.80	293.96	269.73
Spain	390.62	409.17	411.14	434.37	495.22	539.97	521.17	501.05	447.80	365.72	309.34	283.46
UK
Japan	82987	88513	90723	100119	111723	124433	127749	118355	103433	77461	64749	..
Canada
USA	560.24	572.55	620.65	656.74	743.16	823.72	794.07	745.68	605.83	450.88

1 Unleaded premium (95 RON) for France, Germany, Italy, Spain, UK; regular unleaded for Canada, Japan and the United States.

2 VAT excluded from prices for automotive diesel and low sulphur fuel oil when refunded to industry.

3 Kerosene for Japan.

* Prices for France, Germany, Italy and Spain are in Euro; UK in British Pounds, Japan in Yen, Canada in Canadian Dollars.

© OECD/IEA, 2009



END-USER PETROLEUM PRODUCT PRICES AND AVERAGE CRUDE OIL IMPORT COSTS

January 2009

AVERAGE END-USE TAXES *

	Feb08	Mar08	Apr08	May08	Jun08	Jul08	Aug08	Sep08	Oct08	Nov08	Dec08	Jan09
GASOLINE ¹ (Tax per Litre)												
France	0.827	0.831	0.831	0.840	0.849	0.848	0.839	0.839	0.823	0.801	0.786	0.784
Germany	0.874	0.882	0.879	0.888	0.896	0.897	0.888	0.886	0.870	0.847	0.833	0.835
Italy	0.791	0.786	0.776	0.807	0.816	0.817	0.807	0.804	0.788	0.765	0.751	0.749
Spain	0.547	0.550	0.550	0.559	0.566	0.568	0.559	0.557	0.545	0.526	0.515	0.513
UK	0.659	0.662	0.664	0.670	0.679	0.681	0.673	0.671	0.661	0.646	0.641	0.637
Japan	63.1	63.1	37.1	63.5	64.1	64.5	64.6	64.1	63.6	62.3	61.4	60.8
Canada	0.321	0.323	0.330	0.335	0.339	0.339	0.335	0.336	0.326	0.316	0.311	0.312
USA	0.105	0.105	0.105	0.105	0.105	0.106	0.106	0.106	0.106	0.106	0.106	0.106
AUTOMOTIVE DIESEL ² (Tax per Litre)												
France	0.428	0.428	0.428	0.428	0.428	0.428	0.428	0.428	0.428	0.428	0.428	0.428
Germany	0.470	0.470	0.470	0.470	0.470	0.470	0.470	0.470	0.470	0.470	0.470	0.470
Italy	0.423	0.426	0.428	0.428	0.428	0.428	0.428	0.428	0.428	0.428	0.428	0.428
Spain	0.302	0.302	0.302	0.302	0.302	0.302	0.302	0.302	0.302	0.302	0.302	0.302
UK	0.504	0.504	0.504	0.504	0.504	0.504	0.504	0.504	0.504	0.504	0.524	0.524
Japan	38.9	38.9	22.0	39.3	39.9	40.3	40.5	40.1	39.7	38.7	37.9	37.4
Canada	0.256	0.262	0.270	0.273	0.277	0.278	0.273	0.270	0.267	0.261	0.254	0.251
USA	0.123	0.123	0.123	0.123	0.123	0.123	0.123	0.123	0.123	0.123	0.123	0.123
DOMESTIC HEATING OIL (Tax per 1000 Litres)												
France	183.02	191.33	193.07	208.30	219.64	220.06	205.81	201.60	189.37	171.26	156.44	151.81
Germany	178.79	186.42	188.71	204.76	214.03	213.71	202.90	199.39	190.92	174.15	150.40	150.49
Italy	607.21	617.41	618.65	635.71	645.52	647.32	633.07	627.75	615.08	596.85	581.59	573.55
Spain	187.18	194.86	195.99	208.50	218.68	220.17	207.37	203.90	193.89	178.75	165.47	158.79
UK	121.17	122.79	124.26	127.82	129.95	130.30	127.13	126.58	122.95	120.30	121.69	120.90
Japan ³	6621	6629	6755	6932	7673	8125	8326	8035	7564	6392	5635	5289
Canada	83.80	87.71	97.54	101.28	106.49	106.12	100.83	97.14	92.40	85.46	80.73	78.53
USA
LOW SULPHUR FUEL OIL FOR INDUSTRY ² (Tax per Metric Ton)												
France	18.50	18.50	18.50	18.50	18.50	18.50	18.50	18.50	18.50	18.50	18.50	18.50
Germany	25.00	25.00	25.00	25.00	25.00	25.00	25.00	25.00	25.00	25.00	25.00	25.00
Italy	31.39	31.39	31.39	31.39	31.39	31.39	31.39	31.39	31.39	31.39	31.39	31.39
Spain	15.00	15.00	15.00	15.00	15.00	15.00	15.00	15.00	15.00	15.00	15.00	15.00
UK
Japan	3952	4215	4320	4768	5320	5925	6083	5636	4925	3689	3083	..
Canada
USA

1 Unleaded premium (95 RON) for France, Germany, Italy, Spain, UK; regular unleaded for Canada, Japan and the United States.

2 VAT excluded from prices for automotive diesel and low sulphur fuel oil when refunded to industry.

3 Kerosene for Japan.

* Taxes for France, Germany, Italy and Spain are in Euro; UK in British Pounds, Japan in Yen, Canada in Canadian Dollars.

© OECD/IEA, 2009



END-USER PETROLEUM PRODUCT PRICES AND AVERAGE CRUDE OIL IMPORT COSTS

January 2009

AVERAGE CRUDE OIL IMPORT COSTS (USD/barrel)

	France	Germany	Italy	Spain	UK	Japan	Canada	USA
1989	..	18.23	17.48	17.22	17.60	16.91	18.56	17.50
1990	..	23.17	23.23	21.88	22.92	22.64	24.15	21.07
1991	..	20.36	19.14	18.50	20.06	20.14	20.83	18.23
1992	18.94	19.13	18.30	17.31	19.07	19.30	19.46	17.73
1993	16.05	16.88	15.87	15.13	16.58	17.47	17.19	15.87
1994	15.76	15.81	15.49	15.24	15.83	16.48	16.30	15.06
1995	17.14	17.07	16.90	16.96	17.29	18.02	17.76	16.74
1996	20.82	20.68	20.53	20.45	21.08	20.55	21.26	20.16
1997	18.99	19.01	18.88	18.34	19.32	20.55	20.59	18.34
1998	12.43	12.48	12.21	11.80	12.64	13.68	13.15	12.02
1999	17.45	17.51	17.10	16.99	18.01	17.38	17.85	17.06
2000	28.18	28.09	27.77	27.16	28.45	28.72	29.10	27.54
2001	24.13	24.15	23.87	23.32	24.45	25.01	24.87	22.07
2002	24.63	24.40	24.34	23.95	24.58	24.96	24.97	23.52
2003	28.87	28.44	28.58	28.13	29.13	29.26	29.53	27.66
2004	37.61	36.65	36.60	36.03	37.75	36.59	38.13	35.86
2005	52.74	52.30	51.33	50.54	53.79	51.57	52.37	48.82
2006	63.69	63.29	62.50	60.99	65.00	64.03	64.33	59.15
2007	72.22	71.60	70.20	68.66	73.80	70.09	70.04	66.75
2008
3Q2005	59.50	59.45	57.31	57.17	60.94	57.23	58.47	55.95
4Q2005	56.35	55.86	54.62	54.34	57.22	56.92	57.11	52.94
1Q2006	60.84	60.02	58.99	58.35	61.26	60.21	59.69	54.39
2Q2006	67.48	66.73	66.01	64.58	68.81	65.80	67.41	63.12
3Q2006	68.27	68.09	67.76	64.39	69.86	70.62	69.26	64.71
4Q2006	58.65	58.19	57.74	56.63	59.64	60.04	59.67	53.69
1Q2007	57.33	56.78	55.34	51.88	57.85	57.55	56.94	53.38
2Q2007	67.75	67.33	66.22	65.60	69.22	65.80	65.43	61.77
3Q2007	74.39	74.39	72.94	72.08	75.89	71.55	73.60	70.07
4Q2007	88.20	87.81	86.36	85.74	89.41	84.76	86.45	81.36
1Q2008	96.82	96.60	94.75	94.62	98.59	93.46	94.48	89.73
2Q2008	120.27	120.25	117.89	117.72	123.03	113.26	116.89	114.21
3Q2008	115.63	115.67	115.09	112.67	116.55	126.94	119.85	115.80
Nov-06	57.58	57.50	56.36	54.71	58.02	58.91	58.29	52.71
Dec-06	60.77	60.28	59.92	58.24	62.59	59.06	61.66	54.42
Jan-07	54.98	53.66	53.24	51.14	53.27	59.62	55.89	51.48
Feb-07	56.77	56.32	53.93	47.77	57.39	54.34	55.89	52.52
Mar-07	61.12	60.38	58.61	57.33	62.65	58.25	59.38	56.04
Apr-07	65.72	65.67	64.51	64.15	67.75	62.38	65.96	59.63
May-07	67.49	66.33	65.20	64.43	68.04	67.16	64.11	61.46
Jun-07	70.45	70.23	68.91	68.57	72.66	67.84	66.48	64.47
Jul-07	75.47	76.48	73.83	72.40	78.03	70.39	73.50	69.07
Aug-07	72.38	70.95	71.03	70.14	73.42	72.22	73.44	69.57
Sep-07	75.25	75.76	74.10	73.60	77.13	72.19	73.88	71.53
Oct-07	81.51	81.86	79.37	78.99	83.79	78.16	79.39	75.75
Nov-07	91.08	91.08	89.46	89.66	92.41	84.27	89.91	84.08
Dec-07	91.38	90.74	90.53	88.96	92.82	91.37	91.73	83.74
Jan-08	93.62	92.13	91.11	90.56	93.59	91.18	92.22	85.97
Feb-08	94.79	94.34	92.22	92.72	96.26	93.06	92.35	87.25
Mar-08	102.68	102.64	100.96	101.28	103.87	96.15	100.50	95.96
Apr-08	108.78	108.19	106.02	105.69	110.82	104.18	104.04	104.38
May-08	120.85	121.94	119.10	119.74	123.52	112.08	114.58	114.18
Jun-08	131.20	131.81	129.05	128.37	133.47	126.39	129.90	124.19
Jul-08	133.35	131.54	131.37	130.14	135.44	133.46	133.99	128.10
Aug-08	113.60	114.19	113.39	109.56	115.96	132.10	122.57	116.35
Sep-08	98.60	98.23	99.86	98.53	100.84	114.25	104.58	100.79
Oct-08	73.69	74.55	75.38	73.60	76.08	92.25	90.02	76.63
Nov-08	55.57	54.81	56.45	52.61	55.50	68.73	61.05	53.48