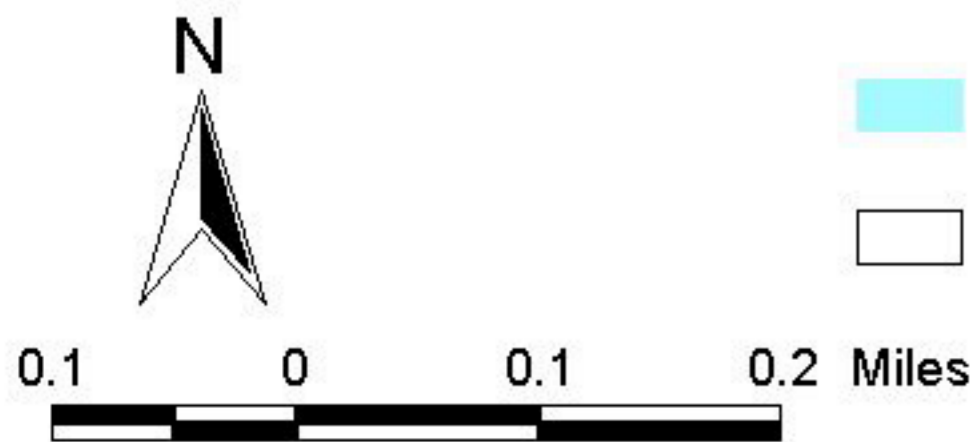




Parametrix Inc. Ottawa River K:\Working\3763\3763-001\0_ata\GIS Support\Ottawa River.apr



Rivers and Waterbodies
 County and District Boundary

PCB Concentration in Sediment,
 Core Depth - Surface (0 - 24 inches)
● Below TEL (0.032 mg/kg)
● Between TEL (0.032mg/kg) and PEL (0.24 mg/kg)
● Above PEL (0.24 mg/kg)

PCB Concentration in Sediment,
 Core Depth - Deep (greater than 24 inches)
■ Below TEL (0.032 mg/kg)
■ Between TEL (0.032mg/kg) and PEL (0.24 mg/kg)
■ Above PEL (0.24 mg/kg)

Figure D-5c : River Mile 4.9 - 6.5
 PCB Concentrations in Sediment:
 1998 Data Compared to Threshold
 and Probable Effects Levels
 (Ingersoll et al. 1996)