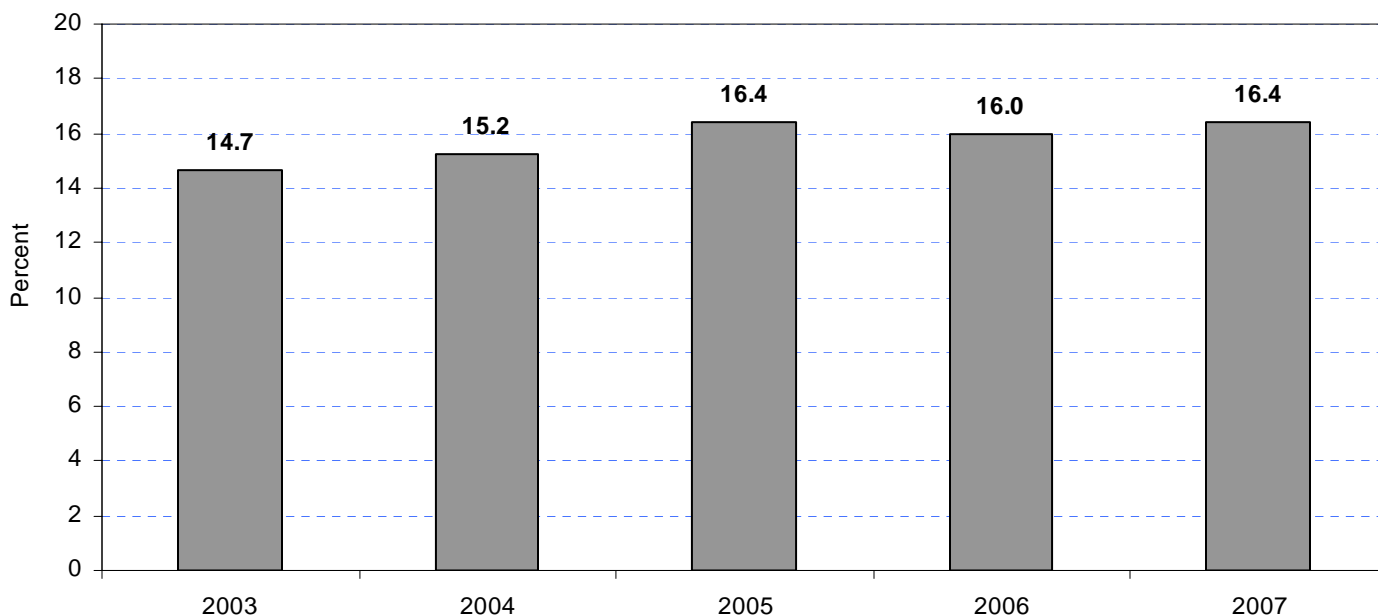
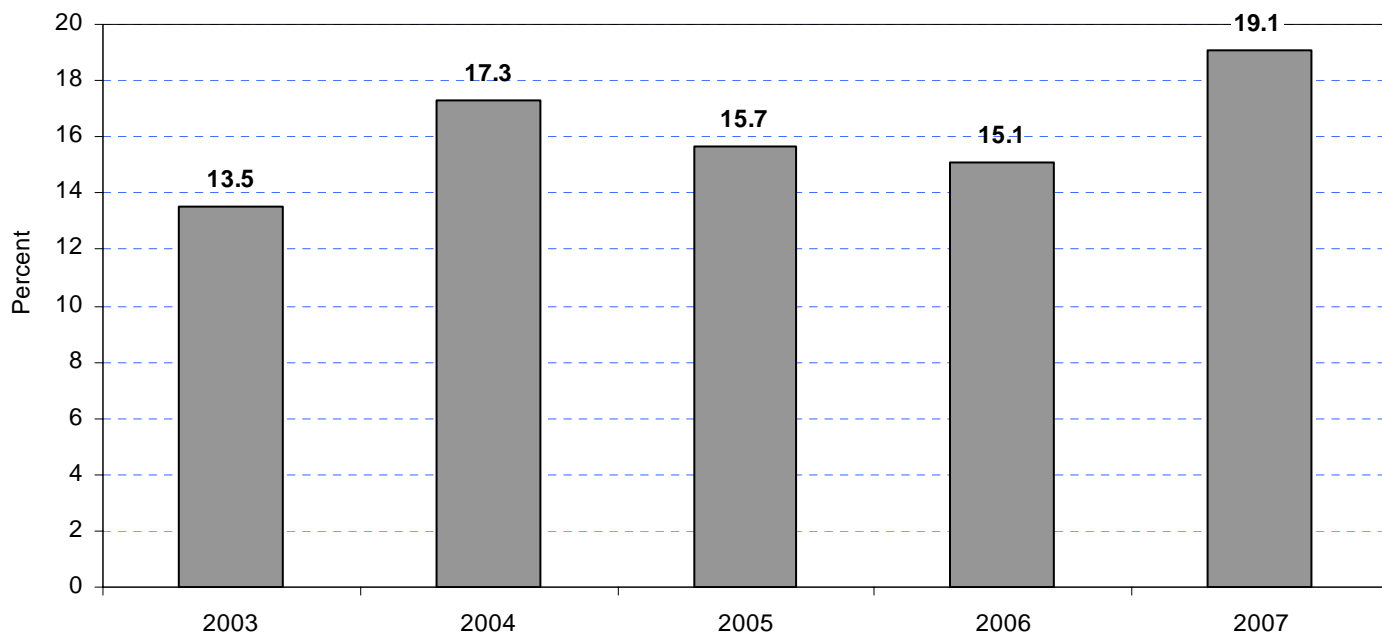


**Figure 6. Net Imports as a Percentage of Total Consumption of Natural Gas, 2003-2007**



**Sources:** Energy Information Administration (EIA), Form EIA-176, "Annual Report of Natural and Supplemental Gas Supply and Disposition"; Form EIA-64A, "Annual Report of the Origin of Natural Gas Liquids Production"; Office of Fossil Energy, U.S. Department of Energy, *Natural Gas Imports and Exports*; Form EIA-895A, "Annual Quantity and Value of Natural Gas Production Report"; Form EIA-914, "Monthly Natural Gas Production Report"; Form EIA-906, "Power Plant Report"; Form EIA-920, "Combined Heat and Power Plant Report"; Form EIA-923, "Power Plant Operations Report"; Form EIA-886, "Annual Survey of Alternative Fueled Vehicle Suppliers and Users"; and EIA estimates.

**Figure 7. Net LNG Imports as a Percentage of Total Net Imports of Natural Gas, 2003-2007**



**Sources:** Office of Fossil Energy, U.S. Department of Energy, "*Natural Gas Imports and Exports.*"