

January/February 2005
volume 14, issue 1

A newsletter of the National
Network of Libraries of Medicine,
Pacific Southwest Region

In this issue:

- RML Directors' Mid-Year Meeting
- A Special Thanks to Andrea and Warm Wishes for her Future!
- Symposium on NN/LM Community-Based Health Information Outreach Held at NLM
- NLM Outreach Symposium Participation from the Pacific Southwest Region
- AIDS Community Information Outreach Projects Fiscal Year 2004
- MLA Public Health Satellite Teleconference
- FAST Track to Funding (Express Outreach Awards)
- NLM Renames Information System Grant Program
- YOUR Network at the Joint Meeting
- Google Scholar: A Personal Perspective
- Searching Institutions in DOCLINE
- Web Browsers: Recommendations, Security Issues, and Browser Settings for DOCLINE
- Frequently Asked Questions @ Your RML
- Network Members in the News
- New EFTS Participants in the Pacific Southwest Region

RML Directors' Mid-Year Meeting

The Directors and Associate Directors of the regional medical libraries of the NN/LM held their fourth mid-year meeting (for the 2001-2006 contract) at the University of Maryland at Baltimore on November 30 – December 1, 2004. The regional medical library staff at the Health Sciences and Human Services Library (HS/HSL) hosted the meeting and an evening reception, and conducted a tour of the library for the meeting participants.

These mid-year meetings provide the opportunity for NLM to hear about progress of various NN/LM initiatives, and also for NN/LM staff to get an update on various aspects of NLM efforts.

The discussion of NN/LM initiatives included: results of a pilot survey to evaluate outreach; updates of the Hospital Internet Task Force and of the E-Licensing Working Group; and highlights of special initiatives at the University of Maryland.

NLM staff gave an overall update on the National Library of Medicine; and specific updates on the ISO protocol and on public access to research information. They also led discussions on NLM's next long range plan, and on "Emergency Preparedness – Preventing Major Disruption in Delivery of Health Information Services."

You can expect to hear more about all of these initiatives (many are in the formative stages) in the upcoming months, and at the May meeting of the Medical Library Association in San Antonio, Texas.

Heidi Sandstrom

- New Member in the Pacific Southwest Region
- Highlights of the November - December 2004 Issue of the *NLM Technical Bulletin*

In every issue:

- Table of Contents for the *NLM Technical Bulletin*
- Upcoming Events
- Publication Information

This article is freely available at: http://nmlm.gov/psr/lat/v14n1/rml_dir_mtg.html

**A Special Thanks to Andrea
and
Warm Wishes for her Future!**

We recently announced on PSR-NEWS that Andrea Lynch will be leaving PSRML for a professional librarian position in the UCLA Biomedical Library's Research, Instruction, and Collection Services (RICS) Division. She will begin this position on January 10, 2005.

Andrea joined the PSRML staff in July 1998. As PSRML Network Assistant, Andrea has been a supportive and responsive resource for Network membership and document delivery questions in the PSRML office. For the past three years, Andrea has been enrolled in the UCLA Department of Information Studies. She earned her MLIS degree in June 2004, and it was inevitable that she would move into another position. We will miss her here at PSRML. We know that you, too, will miss her expertise and assistance – qualities on which many of you have come to rely.



Andrea has always demonstrated a strong commitment to public service, to the NN/LM program and its staff, to all Network members in the Pacific Southwest, and to developing her skills and talents in ways to enhance health information access. We hope that her path will someday return to the PSRML office!

Julie Kwan

This article is freely available at: <http://nmlm.gov/psr/lat/v14n1/thanks.html>

Symposium on Community-Based Health Information Outreach Held at NLM

About 160 people representing academic libraries, public libraries, community-based organizations and other interested groups attended a two-day symposium on community-based health information outreach held at the National Library of Medicine on December 2-3, 2004. The symposium's planning committee was co-chaired by Wayne Peay, Director of Eccles Health Sciences Library, University of Utah, and Maxine Rockoff, Director of the Division of Information Management, New York Academy of Medicine. Eleven additional members participated on the planning committee.

The goal of the symposium was to explore new models of health information outreach that are emerging as technology dramatically changes the abilities of medical and health services libraries to provide resources and services beyond traditional institutional boundaries. Particular emphasis was given to consumer health information outreach through community-based organizations. The National Library of Medicine's Strategic Plan to Reduce Health Disparities was also reviewed, with special emphasis placed on NLM programs targeting Native Americans.

Eugenie Prime, former chair of the NLM Board of Regents, led off the meeting with an inspiring keynote address. Other panels addressed such issues as perspectives and lessons learned from selected NLM outreach projects, the community-based organization perspective on health information outreach, outcome and evaluation strategies for outreach projects, and communications strategies useful in maximizing the effectiveness of outreach. A list of presentations and speakers and a complete program are available from the symposium's web site, located at: <http://medstat.med.utah.edu/symposium>. The web site also includes links to PowerPoint presentations, white papers used for background reading, and other useful links, as well as webcast archives, which are posted on the web site and available for viewing with RealPlayer.

The symposium also included a poster session, featuring seventeen projects dealing with innovative approaches to health information outreach throughout the country. Projects ranged from urban health information outreach strategies for Arab Americans in Detroit to health information outreach to the Hispanic population in the Texas-Mexico border colonias. Other posters addressed topics such as HIV/AIDS information outreach and linking Native Americans to health information. A complete list of poster abstracts is available from the symposium's web site.

Themes and issues that emerged from the symposium included the importance of "eyeball-to-eyeball" communication in establishing rapport with a community targeted for outreach, planning and conducting evaluation from the beginning of a project, and reaching communities in their own worlds with their own words. Numerous suggestions and recommendations were received which will be useful in preparing the RFP for the next National Network of Libraries of Medicine (NN/LM) five-year contract for the period of 2006-2011.

Alan Carr

This article is freely available at: http://nmlm.gov/psr/lat/v14n1/nlm_symposium.html

NLM Outreach Symposium Participation from the Pacific Southwest Region

Several participants from our region played key roles in symposium content:

- Richard J. P. Cavosora from the APIA Health Forum in San Francisco presented a poster on the Asian and Pacific Islander American Health Forum (APIAHF).
- Hilde C. Heine from Pacific Resources for Education and Learning presented a poster on a project focused on improving health literacy in the Marshall Islands.
- Judy Mikami, Na Pu uwai Native Hawaiian Health Care System, participated on a panel providing perspectives from community based organizations.
- Eugenie Prime, former chair of the NLM Board of Regents and retired California-based hospital and corporate librarian who now lives in Florida, gave the keynote address.
- Bern Shen, M.D. from the Health Horizons Programs, Institute for the Future in Menlo Park, presented an address, “A Futurist’s Perspective”.

Other participants from our region included: Richard Chabrán, California Community Technology Policy Group, and member of the NLM Board of Regents; Rebecca Davis, Carlson Health Sciences Library, University of California, Davis; Gary Freiburger, Arizona Health Sciences Library; Franda Liu, Pacific Resources for Education and Learning; Michael Gill Magnaye, Asian & Pacific Islander American Health Forum; Marjorie Mau, M.D., Department of Native American Health, University of Hawaii; Yolanda Partida, School of Policy, Planning & Development, University of Southern California; and Benjamin Young, M.D., Native Hawaiian Center for Excellence, University of Hawaii School of Medicine.

PSRML staff attending the symposium included Alan Carr, Kay Deeney, and Heidi Sandstrom.

Julie Kwan

This article is freely available at: http://nml.gov/psr/lat/v14n1/nlm_symposium_psr.html

AIDS Community Information Outreach Projects Fiscal Year 2004

NLM has continued its HIV/AIDS- related outreach efforts to community-based organizations, patient advocacy groups, faith-based organizations, departments of health, and libraries. This program provides support to design local programs for improving information access for AIDS patients and the affected community as well as their caregivers. Emphasis is on providing information or access in a way meaningful to the target community. Projects must involve one or more of the following information access categories: information retrieval, skills development, Internet access, resource development, and document access.

During 2004, the 11th round of the program, NLM funded 20 AIDS Community Information Outreach Projects. Two awards were made in the Pacific Southwest Region:

AIDS Education Global Information System (AEGiS) (San Clemente, CA)

AEGiS seeks funding from NLM to assist in providing HIV/AIDS information to patients, the affected community, researchers and caregivers. AEGiS will accomplish this goal by maintaining content assistants

who will support Sr. Mary Elizabeth, the Operations Director of the AEGiS website. Funding will also assist AEGiS in the linking of research documentation to NLM'S PubMed abstract database. AEGiS is presently serving over 900,000 users per month, and has archived over 1.1 million documents dealing with HIV/AIDS. The sources for this information include the National Library of Medicine and many other government agencies, AIDS Service Organization publications, Wire services (Agence Presse France, Associated Press, Inter Press Service, Reuters, United Press International, etc.), numerous regional news organizations (Bangkok Post, BBC, Mail & Guardian, New Vision, Sunday Times) and local publications (Los Angeles Times, San Francisco Chronicle and Examiner, Newsday, etc). All of this data is archived and is keyword searchable. With this new feature, many articles' footnotes will be linked so that original material is located easily on PubMed. The AIDS Education Global Information System (AEGiS) website is <http://www.aegis.org>.

Pacific Resources for Education and Learning - HIV/AIDS Prevention in the Pacific (HAPP) (Honolulu, HI)

Pacific Resources for Education and Learning is an independent, nonprofit 501(c)(3) corporation that serves the educational community in the U.S.-affiliated Pacific islands, the continental United States, and countries throughout the world. The HIV/AIDS Prevention in the Pacific (HAPP) project's goal is to improve education and access to quality HIV/AIDS-related information in the remote and underserved multicultural communities across the U.S.-affiliated Pacific. The project will 1) provide training sessions for public librarians, educators, and selected community members on building basic information retrieval skills to access and use up-to-date HIV/AIDS online resources; 2) develop educational and informational materials that are culturally and linguistically appropriate for the target audience using a successful model; and 3) distribute materials via community-based partners. The Pacific Resources for Education and Learning website is: <http://www.prel.org>.

Alan Carr

[Editor's Note: based on an NLM press release dated October 28, 2004]

This article is freely available at: <http://nnlm.gov/psr/lat/v14n1/aids.html>

MLA Public Health Satellite Teleconference

The National Library of Medicine (NLM) is cosponsoring MLA's public health teleconference on March 9, 2005. NLM's support will make the teleconference more affordable for both sites and individuals.

The National Network of the Libraries of Medicine, Pacific Southwest Region, will underwrite the registration cost for up to ten (10) regional satellite teleconference sites for the broadcast:

Partnering for Public Health Information, Librarians, and the Public Health Workforce

Wednesday, March 9, 2005

**11:00 AM – 2:00 PM, Pacific Time
9:00 AM – 12:00 AM, Hawaii Standard Time**

5:00 AM – 8:00 AM, Guam Standard Time (Thursday, March 10, 2005)

Goals

The goals of this teleconference are to enhance knowledge of and to encourage participation in the provision of information about public health by health sciences librarians.

Objectives

- To provide a fundamental knowledge about public health
- To explore the information needs of the public health workforce
- To present a sample of resources currently available to meet their information needs
- To demonstrate collaboration between health sciences librarians and the public health workforce

Cost

Early Bird Price (before 02/09/2005): \$225.00 per Satellite Teleconference

Participants will receive 2.0 MLA Continuing Education contact hours for the teleconference alone or 3.5 contact hours if wrap-around sessions are included. Site coordinators will receive 1 academy professional activity point applicable to their membership. Special consideration will be given to those sites able to broadcast to another location within a state and to those sites that anticipate a minimum of ten (10) participants per site.

Once your request for funding has been approved, you will need to register directly with MLA and serve as local site coordinator. You may charge participants for logistical arrangements, such as refreshments and parking, but not for registration. For more information, please visit the MLA web site:

<http://www.mlanet.org/education/telecon/publichealth/>

NN/LM PSR will publicize a list of regional viewing sites in upcoming weeks, and will circulate the videotape following the teleconference. If you are unable to attend the conference, you can request a loan from our web site at the Videocassettes, CD-ROMs, DVDs and Literature Available for Loan page (<http://nnlm.gov/psr/loans/videoloans.html>).

Karen Ricard

[Editor's Note: MLA is also offering a webcast of this teleconference for individual use. More information about this option is available on the teleconference website.]

This article is freely available at: http://nnlm.gov/psr/lat/v14n1/mla_teleconf.html

FA\$T Track to Funding

The other day we received an inquiry about the application deadline for an Express Outreach Award. Happily we could tell the caller that applications are accepted on a continuous basis and that funding is currently available! These awards support Network member projects to improve information access for

health professionals and the public. We fund at least four projects a year, up to a level of \$6,000 each. Projects typically take 12 months or less to complete.

The application process is very straightforward; applications can be submitted via web-based forms at your convenience. Our librarians are always available to discuss project ideas with you and to walk you through the application process. All projects must be completed by April 2006, so now is a good time to get those ideas rolling! Visit our Express Outreach Awards page at http://nmlm.gov/psr/outreach_award_info.html.

We count on YOU to extend the reach of the Network in our region. Count on us to support your efforts!

Heidi Sandstrom

This article is freely available at: http://nmlm.gov/psr/lat/v14n1/fast_track.html

NLM Renames Information System Grant Program

The National Library of Medicine (NLM) has reissued and renamed its Information System Grant program. The newly named NLM Translational Informatics Grant program was announced in the *NIH Guide* on November 12, 2004. The purpose of these grants has not changed; NLM Translational Informatics Grants are offered to assist organizations that want to use information technology to optimize the utility of clinical and research information in order to bring usable and useful online health information to end-users.

NLM anticipates spending approximately \$4 million per year to support this grant program and expects to make eight to ten new awards in this program each year. Eligible organizations include U.S. public and private, non-profit institutions engaged in health administration and education, biomedical research, or clinical care. Individuals with the skills, knowledge, and resources necessary to carry out proposed projects are invited to work with their institutions to develop an application for support. Individuals from underrepresented racial and ethnic groups, as well as individuals with disabilities, are always encouraged to apply for NIH programs.

The announcement for the NLM Translational Informatics Grants program is available at: <http://grants.nih.gov/grants/guide/pa-files/PA-05-012.html>, and replaces the Information System Grant. Funding parameters, deadlines, and other features of the program remain the same. The next deadline for NLM Translational Informatics Grants is February 1, 2005. Application materials, including special instructions and a link to the downloadable application form, are available on the NLM Extramural Programs Division web site at: <http://www.nlm.nih.gov/ep/>. A list of all grants awarded in fiscal year 2004 is available at: <http://www.nlm.nih.gov/ep/Awards2004.html>.

Alan Carr

[Editor's Note: This article is based on a message from Valerie Florance, Deputy Director, NLM Extramural Programs.]

This article is freely available at: http://nmlm.gov/psr/lat/v14n1/nlm_grant.html

YOUR Network at the Joint Meeting

Got questions about DOCLINE and other NLM services? Want to see a demonstration of new NLM databases and features? Have a great idea for resource sharing or outreach that you want to discuss? Would you like an opportunity to give feedback on the NN/LM program in our region? You can do all this and more...as we all sail into our future at the MLGSCA/NCNMLG Joint Meeting 2005 in Long Beach.

NN/LM PSR staff will be at the exhibit booth throughout the meeting. In addition, we will be convening a feedback session on Thursday, February 3, from 4:15 to 5:15 at Shoreline AB. This session will be facilitated by Marshall Keys, Ph.D., who is also a keynote speaker at the meeting. One of the ways he encourages librarians to think strategically is by serving as a facilitator in their planning processes.

Please join us at the Joint Meeting...we can't navigate without YOU!

Heidi Sandstrom

This article is freely available at: http://nml.gov/psr/lat/v14n1/joint_meeting.html

Google Scholar: A Personal Perspective

By Kay Deeney
NN/LM PSR Education Coordinator
kdeeney@library.ucla.edu

Okay, I admit it. I only looked at Google Scholar because someone told me they had been using it, and they said they got more relevant info from it than from PubMed. I, of course, was incensed, so I looked into it!

I did a search for the Ross Procedure, a cardiothoracic surgical procedure. In Google Scholar the first two pages (20 references) were from 2000 at the latest. Most had Ross Procedure in the title, a few mentioned pulmonary autograft or Ross operation—both relevant. All the citations were about the Ross procedure and the two words did not have to be adjacent, for example, Ross-Konno procedure is also acceptable. Of the first 50 items, the years ranged from 1994 through 2002. The citations were to the professional medical journals, the kind indexed by PubMed and other research databases.

In PubMed I received over 1100 citations, but I did need to refine the search to eliminate Ross as an author. Then, with 389 citations, I sorted by date so that I could see that the first 50 were from 2004. Most of the citations were relevant, but in a few instances Ross was the name of an institute, or an author's first name (revealed in the email address part of the Affiliation [AD] field).

In another search in PubMed on "Flu Vaccine" the DETAILS revealed:

("influenza vaccine"[TIAB] NOT Medline[SB]) OR "influenza vaccine"[MeSH Terms] OR Flu Vaccine [Text Word]

(Remember, one of the newest features in PubMed is that if my term Flu Vaccine maps to a MeSH heading, it is also searched as the title and abstract in records recently input.) I retrieved 6698 citations. Sorting by date, 383 are from 2004.

In Google Scholar, I retrieved 4300. The years of the first 50 ranged from 1984—2002. If I add 2004 to the search string, I retrieved older references that are cited by newer citations. And I get a few that have the publication year of 2004.

I sent a comment to Google about the dates. A day later I received an automated email response saying they can't answer personal emails, but surprisingly the attached text answered my question. It said the following:

Although we don't currently offer chronological sorting, you might try our numrange feature. Simply add a date range to your search query separated by an ellipsis. For example, our search for

author:salovey 1996...2004

I tried that with my Flu vaccine search, "Flu Vaccine 2002. . . 2005." It wasn't 100% accurate, but it did look for the numbers showing up somewhere in the records. So for example, I did retrieve an article from 2001 discussing the 2002/2003 upcoming flu season.

While Google Scholar gets high marks for relevant citations, so far it isn't ideal for currency. Within a week of experimenting with Google Scholar, they did add another bullet to their FAQs. For more information on Google Scholar, check out <http://scholar.google.com/scholar/about.html>.

[Editor's Note: Google finds its material using Googlebot, its web-crawling robot. Pages are not linked and displayed in the same way citations are displayed in PubMed. Thus, Google's algorithms do not result in seeing the most recent citations first. For more information on how Google finds its links, see <http://scholar.google.com/scholar/about.html#search14>.]

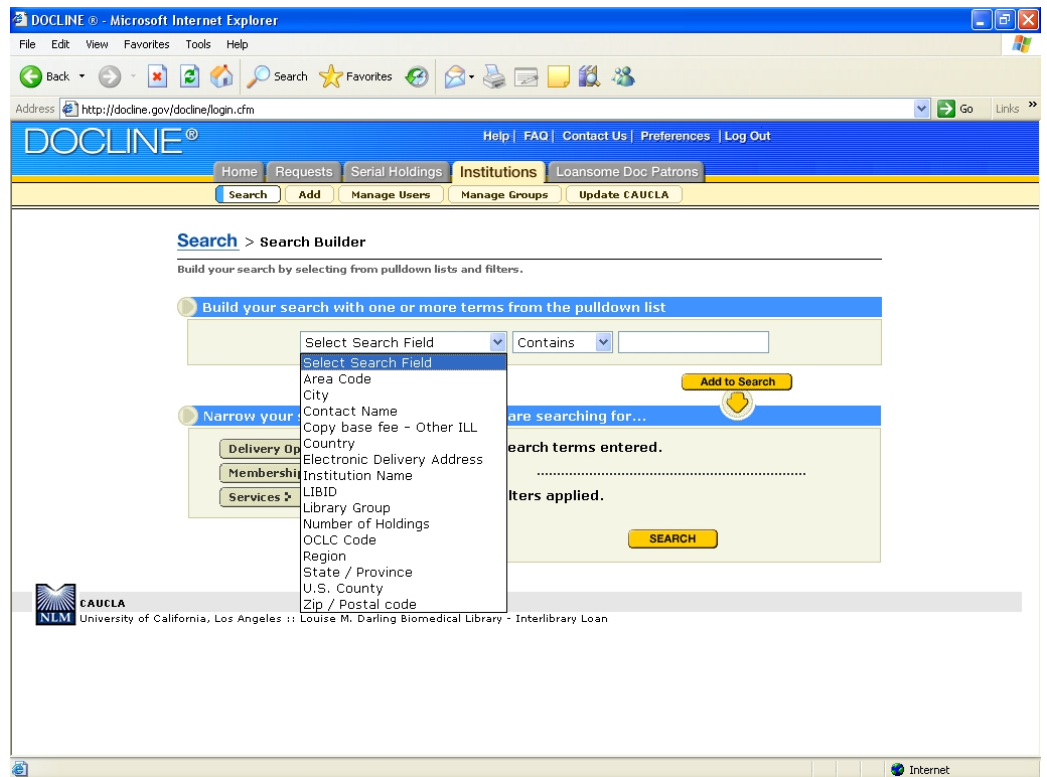
This article is freely available at: <http://nmlm.gov/psr/lat/v14n1/google.html>

Searching Institutions in DOCLINE

The DOCLINE system allows for extensive searching of records in the Institutions module. To take advantage of this functionality, select **Institutions** on the DOCLINE main menu, then select the blue **More Search Options** button.

You can search on a combination of terms (see the picture below):

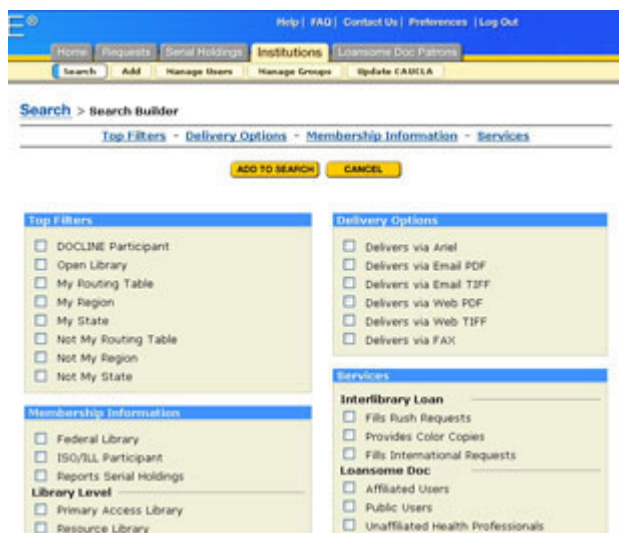
- area code
- city
- contact name
- copy charges
- country
- electronic delivery address
- institution name
- LIBID
- library group
- number of holdings
- OCLC code
- region
- state/province
- U.S. county
- zip/postal code



Select the field to query, then enter or select the search term and click **Add to Search**. Repeat as necessary to add multiple terms to the search.

Here are some examples of searches you can do:

- Which libraries in my local MLA chapter are EFTS participants?
- Which hospital libraries in my state have more than 200 journals listed in DOCLINE?
- Which Mexican libraries participate in DOCLINE?
- How many Network members are listed for my county? For the counties next door?
- How many libraries in our region are members of FreeShare?
- Are the library listings for our local MLA chapter correct and current? Who is listed for my chapter?



To limit your search results, click on one of the Filter buttons (Delivery Options, Membership Information, or Services). This will take you to the Search Builder screen (see picture to the left). Check one or more search filters to apply to the search (e.g. “Not My Routing Table”, “Fills Rush Requests”, etc.) and click **Add to Search**. Click the **Search** button to see the results.

For more information on searching for institution records based on multiple criteria, select **Help**, then navigate to **Institution Search** (See “Finding institutions that match multiple search criteria”).

You will also find a tutorial from the National Network of Libraries of Medicine at:
<http://nnlm.gov/train/tutor/docline/>.

Andrea Lynch

[Author's Note: Sections of this article have been taken from a DOCLINE-L posting on November 19, 2004 by the NLM DOCLINE Team.]

This article is freely available at: http://nnlm.gov/psr/lat/v14n1/searching_docline.html

Web Browsers: Recommendations, Security Issues, and Browser Settings for DOCLINE

By

Michael Miller
NN/LM PSR Technology Coordinator
mmiller@library.ucla.edu

Andrea Lynch
NN/LM PSR Network Assistant
andlynch@library.ucla.edu

It is difficult to keep abreast of the multitude of browsers available and to make sure the most current version is installed on your computer. This article offers browser recommendations, reasons and tips for updating your browser, and a reminder to DOCLINE participants to verify they are using the supported browsers with the correct settings to use DOCLINE. Having access to more than one Web browser is ideal and keeping each one up-to-date is a necessity. And, for certain Web-based systems, like DOCLINE, you need to have access to a browser that is supported by NLM and required to successfully access and use the system.

Which Browser should I Use?

There are a multitude of browsers available, but which one should you install? The choice may not necessarily be up to you. We recommend that you use the browser supported by your organization's technical department. If you are fortunate enough to have control over what software you are using, you should consider upgrading your browser or trying out an alternative browser. You might even like your new browser more!

For Windows users, the most popular browsers are Microsoft's Internet Explorer, Mozilla Foundation's Firefox and Mozilla Suite, AOL's Netscape, and Opera Software's Opera Web browser. All browsers, with the exception of Opera, are free; an "ad-free" version of Opera is available for a small fee. One important consideration to note is that all future versions of AOL's Netscape browser will be based on the Mozilla Foundation's Firefox browser. Therefore, our recommendations are to use Firefox or the Mozilla Suite.

For Mac users, the most popular browsers are Apple's Safari, Mozilla's Camino, and Internet Explorer 5 for mac. However, this article will focus solely on browsers for Windows Operating Systems.

It's not at all unusual to have more than one browser installed on your computer. It's nice to have choices, especially when you encounter a Web page that doesn't display correctly within your preferred browser. We highly recommend checking out Firefox and the Mozilla Suite. The main difference between the two is that Firefox is a dedicated browser whereas the Mozilla Suite is an "Internet Application Suite" complete with Web-browser, advanced e-mail, a newsgroup client, Internet Relay Chat (IRC) chat client, and a simple HTML editor. These features are nice, but if you are looking for a fast browser-only application then look no further than Firefox. All staff at the NN/LM Pacific Southwest Region regional office currently use Firefox. It's extremely fast, secure, updated regularly, supports tabbed browsing and pop-up blocking, and is highly customizable. In addition, there are many wonderful extensions available for download that can add new features and functionality to Firefox.

Updates and Security Issues

It's a well known fact that some browsers, especially Internet Explorer, are highly vulnerable to security threats such as viruses, spyware, malicious code, etc. It is extremely important to take measures to protect your computer by regularly updating your browser with the latest security patches and updates. If you choose to use Internet Explorer, either turn on automatic updates or regularly check the Windows Update Web site for updates. Other browsers, such as Firefox and the Mozilla Suite, will occasionally notify users of security related updates via the browser window; however it's a good idea to stay alert and periodically check for updates on the respective websites.

If you would like to update your browser but aren't sure what version you are running, it's very easy to find out. Open your browser and on the main menu across the top of the browser window select **Help** and then **About [Your Browser's Name Here]**. Detailed information about your browser version will be displayed.

Feel free to try out any of the browsers listed in the previous section, but remember that with any browser you use, it's important to regularly update your browser and computer with security patches and updates. And, at all times, practice safe Web-searching habits.

For DOCLINE Users

For DOCLINE users, it is important that your Web browser settings be set according to what NLM recommends for accessing DOCLINE. There are three browsers that NLM supports for the DOCLINE system. And, although NLM actively tests and supports Netscape 7.0, Internet Explorer 5.5, and Internet Explorer 6.x for use with DOCLINE, each browser version may have specific issues which NLM cannot always address.

If you install a later browser version that is not actively tested by NLM, you should maintain access to one of the supported browsers to ensure your library's access to DOCLINE.

The settings for three NLM supported browsers for DOCLINE can be found at the following URLs:

- Netscape 7.0 -- http://www.nlm.nih.gov/docline/netscape7_settings.html
- Internet Explorer 5.5 -- http://www.nlm.nih.gov/docline/ie5_settings.html
- Internet Explorer 6.x, which means version 6.0 and above -- http://www.nlm.nih.gov/docline/ie6_settings.html

These resources include screenshots and step-by-step instructions to help you with navigating your particular browser's setting options and making changes, if necessary. For institutions behind a firewall, be sure to review the DOCLINE FAQ "Question: How do I connect to DOCLINE and stay connected if my institution uses a firewall or a proxy server?" located at: http://www.nlm.nih.gov/services/doc_firewall.html.

There are other system requirements for DOCLINE, including computer specifications, cookie information, and information for Macintosh computer users. Visit the following Web page for more information: http://www.nlm.nih.gov/docline/system_requirements.html.

[*Author's Note: The "For DOCLINE Users" section of this article is based primarily on the "Browser Settings" section of the DOCLINE System Requirements.*]

This article is freely available at: <http://nmlm.gov/psr/lat/v14n1/browsers.html>

Frequently Asked Questions @ Your RML

Below are two questions (with answers) that have come to us since the last issue of *Latitudes*. Take a look...they may be questions you have wanted to ask us!

- Are weekends counted in DOCLINE time-triggered actions?
- Why isn't my LinkOut icon displaying?

Question: Are weekends counted in DOCLINE time-triggered actions?

Answer

Saturdays and Sundays are not counted as days in DOCLINE and are not factored when processing time-triggered actions. Lenders have 1 business day to receipt a request and 3 business days to update a request after receipting it before DOCLINE will automatically remove it and route to another potential lender.

If you have any questions, please contact us at 800-338-7657 or psr-nnlm@library.ucla.edu.

Question: Why isn't my LinkOut icon displaying?

Answer

One reason why LinkOut icons may not display is that the URL is incorrect. Make sure you are using the LinkOut URL especially for your library. For example:

<http://www.ncbi.nlm.nih.gov/entrez/query.fcgi?holding=psrmlib>

Replace your library's LinkOut User Name for "**psrmlib**"

If you are using the correct URL and still not seeing your library's icon, run the following search to double-check:

loprovpsrmlib [sb]

Replace your library's LinkOut User Name for “**psrmlib**”

Note: to help you remember this syntax, just remember: “lo” is for LinkOut, and “prov” is for provider, and “[sb]” is for subset.

If you need help with LinkOut or have any questions, please contact us at 800-338-7657 or psr-nnlm@library.ucla.edu.

Andrea Lynch

This article is freely available at: <http://nnlm.gov/psr/lat/v14n1/faq@rml.html>

Network Members in the News

Arpita Bose

Ms. Arpita Bose has been appointed as a Clinical Support Librarian at the Norris Medical Library and will be assuming her position on February 1, 2005. Ms. Bose completed her MLIS program at UCLA in December, 2004. While attending library school, she served as a reference desk assistant at the UCLA Biomedical Library for two years and as a library intern for the Audio-Digest Foundation for one year. In 1993 she completed her undergraduate work at UCLA where she majored in biochemistry. She then worked for four years as a quality control chemist at Gensia Laboratories in Irvine and five years in quality control and compliance for Abbott Laboratories in Pasadena.

Andrea Lynch

Andrea Lynch has been appointed Health and Life Sciences Librarian in the Research, Instruction, and Collection Services (RICS) Division of the Louise M. Darling Biomedical Library at UCLA. She has served as PSRML Network Assistant since 1998. Andrea received her MLIS degree from UCLA in June 2004. As a student, Andrea received support from the Louise M. Darling Biomedical Library Fund. Louise started this fund in order to support the professional development of Biomedical Library staff, and many former Biomedders have contributed to it along the way. Louise would have been very proud of Andrea, the first Biomedder to complete a library school degree funded by the program.

Julie Kwan

This article is freely available at: http://nnlm.gov/psr/lat/v14n1/members_news.html

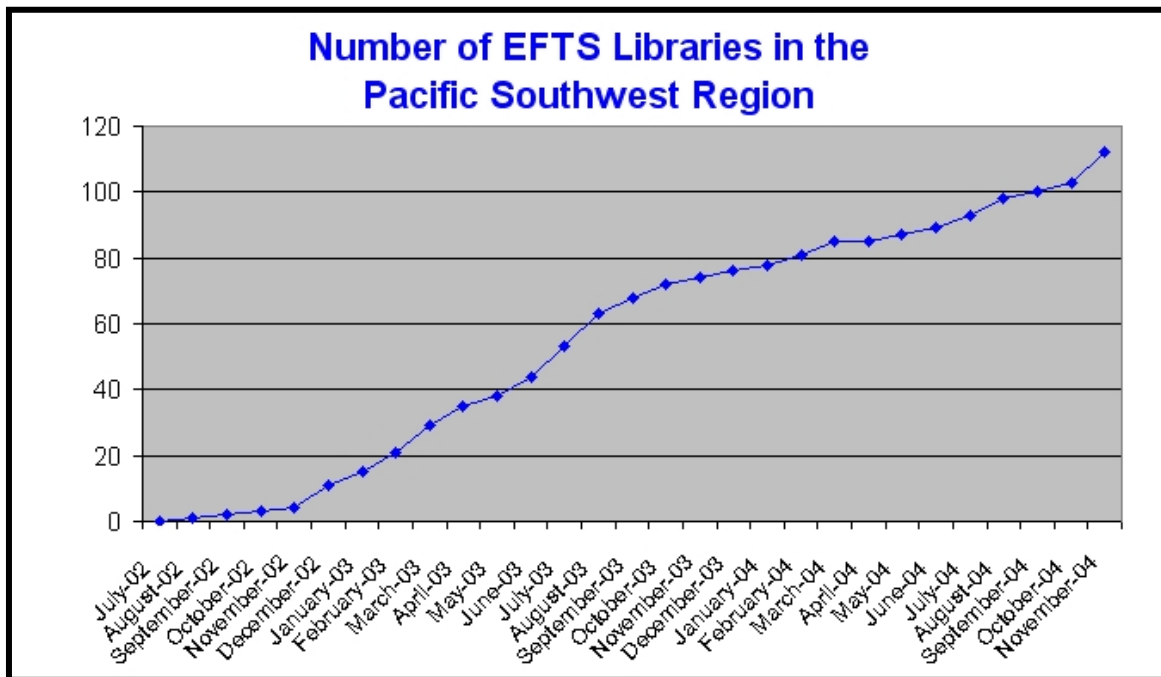
New EFTS Participants in the Pacific Southwest Region

The following 11 libraries have joined the Electronic Funds Transfer System (EFTS) since the last issue of *Latitudes* was published. As of December 15, 2004, 114 (28%) of the 412 DOCLINE libraries in the NN/LM Pacific Southwest Region are EFTS participants. Let us help you become the next new EFTS participant!

If you would like to see more libraries in our region participating in EFTS, spread the EFTS word to non-EFTS libraries that you receive requests from and to which your library sends requests. Be sure to let them know about how simple it is to send data to EFTS and how much time you are saving by participating.

Primary Access Libraries

Kaiser Permanente Medical Center, Anaheim, CA
Kaiser Permanente Medical Center, Los Angeles, CA
Kaiser Permanente Medical Center, San Diego, CA
Kaiser Permanente Medical Center, West Los Angeles, CA
Kuakini Medical Center, Honolulu, HI
Long Beach Memorial Medical Center, Long Beach, CA
Mayo Clinic Hospital Library, Phoenix, AZ
Mayo Clinic Medical Library, Scottsdale, AZ
Mayo Clinic Edmond Research Library, Scottsdale, AZ
St. Jude Medical Center, Fullerton, CA
ValleyCare Health System, Pleasanton, CA



To see all EFTS participants, search DOCLINE or visit the following webpage: <https://efts.uchc.edu/efts/common/MembersDirectory.aspx>. For EFTS participants in the Pacific Southwest Region as listed in the EFTS Members Directory, select “07 Pacific Southwest Region” for the NN/LM Region pull-down menu and click on the Search button. For more information about EFTS, please visit the EFTS website: <https://efts.uchc.edu/>.

EFTS Resource Especially for You!

Guide to EFTS in the NN/LM Pacific Southwest Region
<http://www.nlm.gov/psr/efts.html>

This resource covers most, if not all, of the questions you may have about EFTS in general and EFTS in the Pacific Southwest Region.

Please contact Julie Kwan with any questions or concerns you may have regarding EFTS.

Julie Kwan and Andrea Lynch

This article is freely available at: <http://nmlm.gov/psr/lat/v14n1/efts.html>

New Member in the Pacific Southwest Region

Since the last issue of *Latitudes*, one organization has joined the National Network of Libraries of Medicine (NN/LM), Pacific Southwest Region. Please welcome the following new Full member of NN/LM!

Member Type	LIBID	Institution	Library	DOCLINE Status
Full	AZUKAS	Banner Estrella Medical Center	BEMC Libraries	In process

Help Expand Your Network!

If you know of a library, resource or information center that is not part of the Network and qualifies for either Affiliate or Full membership (please see the Types of Network Members Web page at http://www.nlm.gov/psr/nm_types.html), please let us know or refer them to us directly. If your organization is planning to open a library, resource or information center, please let us know that too! For more information, visit the following webpage on Network membership within the Pacific Southwest Region: <http://www.nlm.gov/psr/nm.html>.

Andrea Lynch

This article is freely available at: <http://nmlm.gov/psr/lat/v14n1/membership.html>

Highlights of the November – December 2004 issue of the *NLM Technical Bulletin*

2005 MeSH

An overview of the 2005 Medical Subject Headings (MeSH) changes and updates follows:

- 487 Descriptors added with no directly corresponding descriptors in 2004 MeSH
- 129 Descriptors replaced with more up-to-date terminology
- 60 Descriptors deleted
- 340 see reference (entry terms) added

Highlights of 2005 MeSH updates include:

- Two Publication Types were removed: Review Literature [Publication Type] and Review, Academic [Publication Type]. They are now see Review [Publication Type].
- The trees for Carnivora, Birds, Cyanobacteria, Clostridium, and Porifera were expanded and modified.
- Kinases – Category D8 has been modified greatly to include: descriptors for three major subclasses; model organism-specific protein Supplementary Concept Records (SCRs); specific isoenzymes are descriptors under Mitogen-Activated Protein Kinase Kinases and Mitogen-Activated Protein Kinase Kinase Kinases.
- Category D5 now includes descriptors for Macromolecular Substances.
- Many SCRs representing individual, organism-specific proteins have been created.
- Historical Events – Category K descriptors have been updated for consistency.
- MeSH Heading check tags representing grant research support have been modified to better reflect the concepts.

The taxonomy of Hominidae has been updated in the 2005 MeSH. A summary of the changes is below:

1. The descriptor for the family Pongidae will be deleted because it is considered obsolete. Its children will be indented under Hominidae.
2. Pongidae will be retained as an entry term on Hominidae.
3. The **check tag** Human will be changed to a new **descriptor** Humans. It will function as both a descriptor and a check tag and will be indented under Hominidae in the MeSH hierarchy, which, in turn, is indented under Animals.
4. Humans will have several entry terms, including some that were previously under Hominidae namely, Homo sapiens, and Man (Taxonomy).

This article contains important tips for PubMed and NLM Catalog users. Be sure to read the entire article if you search for animal studies.

NLM is adding drug trade names from the following countries to MeSH descriptor records and SCRs: Australia, Canada, Germany, France, Spain, Ireland, Mexico, Netherlands, United Kingdom, Puerto Rico, and United States.

NLM's Collection Development Manual

A new NLM resource has been made available on their Web site (<http://www.nlm.nih.gov/tsd/acquisitions/cdm/>): the *Collection Development Manual of the National Library of Medicine*, 4th ed. (CDM). The CDM is a collection development policy document for NLM staff and contains extensive information about NLM's collection, including NLM Board of Regents' collection policy statement; a description and history of the NLM collection; information about the Library's philosophy of collection development; as well as delineation and discussion of the subjects, formats and literature types which the Library collects.

NLM Implements AACR2's 2004 Amendments

This past September, NLM's Cataloging Section implemented the 2004 amendments to the *Anglo-American Cataloguing Rules*, 2nd edition, 2002 revision. Changes include clarifications to and amplifications of existing rules and renumbering of rules. They are specified below:

- A new rule, AACR2 1.0A3, has been added to give a fuller explanation of the chief source of information for bibliographic description. Corresponding material-specific rules have been modified in chapters 2-12, and chapter 25 to reflect this new rule.

- New options have been provided for AACR2 6.5B1 and 7.5B1 to permit applying terms in common usage for the specific format of the physical carrier. For the present, NLM will not apply these options, pending a decision of the Program for Cooperative Cataloging (PCC).
- AACR2 rule 9.3 has been deleted. Data for "type and extent of resource" will not be provided for electronic resources.
- AACR2 9.5B1 provides an option to permit applying terms in common usage to describe the specific physical carrier of direct access electronic resources (e.g., CD-ROM, DVD-ROM). For the present, NLM will not apply this option, pending a decision of the PCC.
- AACR2 9.5B3 provides an option to record the extent of item for remote access electronic resources (e.g., 1 electronic text). For the present, NLM will not apply this option, pending a decision of the PCC.
- AACR2 12.0B1 has been amended to address both numbered and unnumbered serials explicitly.
- AACR2 12.1E1 eliminates the distinction between the rules for recording "other title information" for serials and integrating resources.
- The concept of "predominant title" for multipart monographs has been eliminated resulting in changes to the following rules:
 - AACR2 21.2A has been changed to state that, in all cases, if a change occurs in the title of a multipart monograph, the title of the first part is retained as the title proper, and later titles are given in a note.
 - AACR2 21.3A2 has been revised to state that the original main entry is retained even when primary responsibility for subsequent parts changes.
 - AACR2 21.29B has been revised to allow additional access to accommodate these changes.
- Differing practices for integrating resources, compared to multipart monographs and serials, have been clarified in the following rules:
 - AACR2 21.2B1 states that when the title of an integrating resources changes, the record is revised to replace the title proper.
 - AACR2 21.3B states that when there is a change in primary responsibility for an integrating resource the record is revised to change the main entry.

2005 Cataloging News

NLM began implementing 2005 MeSH for cataloging and records by collaborative data producers on November 22, 2004. As of November 22, 2004, LocatorPlus MeSH subject headings reflect 2005 MeSH. For the NLM Catalog, 2005 MeSH will be reflected when the year-end processing has been completed.

LocatorPlus

New versions of 13 LocatorPlus tutorials were released mid-December and are available at: <http://locatorplus.gov>.

Non-Print Materials Receive an AV Accession Number

In October, NLM started assigning audiovisual (AV) accession numbers for non-print materials shelved in the General Collection to maximize available space for this type of material. When requesting AV materials via interlibrary loan, be sure you include the AV accession number when it is provided.

MEDLINE

During MEDLINE's Year-End Processing for 2005, the following most noteworthy changes were made (not included in this list are items covered more specifically in other sections of this *Latitudes* article):

- The MeSH Browser now includes 2005 MeSH and links to 2004 MeSH.
- MEDLINE citations will reflect the new 2005 MeSH.

- 17 entry combinations have been replaced with appropriate precoordinated MeSH headings or other MeSH heading/subheading combinations in MEDLINE citations.
- Heading Mapped-To (HM) maintenance has been performed to add HM values as MeSH Headings for every SCR Name of Substance, when absent, in a MEDLINE citation.
- Changes include Enzyme Commission Nomenclature and CAS Registry Number data as well as Substance Name. These involve MeSH chemical concepts in Category D and SCRs.
- Some SCRs have been elevated to MeSH headings, such as Luteolin.
- Records created by the Kennedy Institute of Ethics are being updated to add, when appropriate, the MeSH Heading Humans or Animals.
- Starting with journals published in 2005, the Roman alphabet transliteration of Cyrillic language (Russian, Ukrainian, Bulgarian, etc.) article titles will no longer take place for MEDLINE citations.
- NLM and Cochrane Collaboration will continue their work to enhance the identification of clinical trials in MEDLINE.

NCBI Bookshelf

The following seven new Agency for Healthcare Research and Quality evidence reports and evidence report summaries have been added:

1. Pharmacologic Management of Heart Failure and Left Ventricular Systolic Dysfunction: Effect in Female, Black, and Diabetic Patients, and Cost-Effectiveness
2. Strategies for Improving Minority Healthcare Quality
3. Effects of Omega-3 Fatty Acids on Cardiovascular Disease
4. Regionalization of Bioterrorism Preparedness and Response
5. Pharmacological and Surgical Treatment of Obesity
6. Measuring the Quality of Breast Cancer Care in Women
7. Preventing Violence and Related Health -Risking Social Behaviors in Adolescents

PubMed

A new Automatic Term Mapping (ATM) has been implemented to include citations that have not been indexed for MEDLINE, such as in-process and OLDMEDLINE, in the search results. For more information on PubMed's ATM enhancements, refer to the entire article.

There is an upcoming change to the From line of email messages containing PubMed search results. The From line will soon read "Sent by NCBI," rather than "Sent by Entrez."

PubMed Central

The following two journals have been added to PubMed Central: *PLoS Medicine* and *American Journal of Human Genetics*.

UMLS

As of October 28, 2004, the 2004AC UMLS edition was available to download from the UMLS Knowledge Source Server. For those licensees that requested DVDs of this edition, they were mailed in late November.

Andrea Lynch

This article is freely available at: <http://nml.gov/psr/lat/v14n1/highlights.html>

Table of Contents for *NLM Technical Bulletin*

Table of Contents for the November – December 2004 issue:

National Library of Medicine® (NLM) Adopts 2004 Amendments to Anglo-American Cataloguing Rules - e2
2004 amendments implemented.

PubMed Central® New Journals Participating and New Content Added - e3
New journals participating and content from already-participating journals has been added.

Collection Development Manual of the National Library of Medicine, 4th ed., Now on the Web - e4
New manual available on NLM's Web site.

Accession Number Shelving of Non-Print Materials - e5
NLM is now assigning AV accession numbers to non-print materials shelved in the General Collection.

2005 MeSH Changes to Hominidae and the Check Tag Human; Resulting PubMed and NLM Catalog Change to Search for Animals - e6
MeSH is updating the taxonomy of Hominidae.

PubMed's® Automatic Term Mapping Enhanced - e7
New translation implemented.

What's New for 2005 MeSH® - e8
Additions and changes to NLM's MeSH for 2005.

MEDLINE® Data Changes - 2005 - e9
Changes made to MEDLINE during annual maintenance.

Drug Trade Names - Enhanced Access and International Coverage in MeSH® - e10
Trade names added for some countries.

Cataloging News--2005 - e11
LocatorPlus and NLM Catalog Now Using 2005 MeSH®.

New PubMed® Spell Checking Feature - e12
New feature suggests alternative spellings for search terms that include misspellings.

Technical Notes – e1:

PubMed E-mail "From" Line Change

UMLS® 2004AC Release, November 2004

New Clinical Alert Issued

Journals Database gets Send to E-mail Feature

Index Medicus Ceases as a Printed Publication

New Versions of the LocatorPlus Tutorial

New Report Summaries Added to NCBI Bookshelf

Newly Maintained MEDLINE® Now Available in PubMed®

Clinical Queries Page Redesign

2005 MeSH® Information Added to MeSH Home Page

PubMed® Survey

Upcoming Events

January 2005	
14 – 19	American Library Association Midwinter Meeting, http://www.ala.org/ala/eventsandconferencesb/midwinter/2005/home.htm , Boston, MA
26 at 11am (PST); 8am (HST); on the 25 th at 4am (GST)	MLA teleconference, "Tips for Negotiating Electronic Licenses," http://www.mlanet.org/education/distance_ed/licensing/index.html
February 2005	
1	Deadline for applying for the National Library of Medicine Extramural Program grants, http://www.nlm.nih.gov/grants.html
2 – 5	MLGSCA/NCNMLG Joint Meeting 2005, <i>Sailing Into the Future</i> , http://www.mlgsc.mlanet.org/jtmtg2005/index.html , Long Beach, CA (<i>NN/LM PSR Exhibit, Feedback Session, 2/2-4/2005</i>)
14	NTCC, <i>PubMed</i> (1-day), http://nmlm.gov/mar/online/description.html , Tucson, AZ
15	NTCC, <i>NLM Gateway & ClinicalTrials.gov</i> (half day), http://nmlm.gov/mar/online/description.html , Tucson, AZ
18	NN/LM Consumer Health Information Workshops for Public Librarians: <i>Prescription for Success: Consumer Health Information on the Internet</i> and <i>Looking in all the Wrong Places: PubMed for Public Librarians</i> , Dr. Martin Luther King, Jr. Library of the San Jose Public Library, San Jose, CA (<i>NN/LM PSR Presentation</i>)
24	Libraries for the Future EqualAccess Libraries, "Beyond an Apply a Day: Providing Consumer Health Information in a Public Library," http://www.lff.org/programs/equalaccess.html , Phoenix, AZ (<i>NN/LM PSR Presentation with Pat Auflick, Arizona Health Sciences Libraries, University of Arizona</i>)
March 2005	
4 – 6	Los Angeles Marathon, http://www.lamarathon.com/ , Los Angeles, CA (<i>NN/LM PSR Exhibit, 3/3-5/2005</i>)
9 at 11:00am (PST); 9:00am (HST); on the 10 th at 5:00am (GST)	MLA teleconference, "Partnering for Public Health: Information, Librarians, and the Public Health Workforce," http://www.mlanet.org/education/telecon/publichealth/index.html
21	NTCC, <i>PubMed</i> (1-day), http://nmlm.gov/mar/online/description.html , Los Angeles, CA
22	NTCC, <i>NLM Gateway & ClinicalTrials.gov</i> (half day), http://nmlm.gov/mar/online/description.html , Los Angeles, CA
24	NN/LM Consumer Health Information Workshops for Public Librarians: <i>Beyond an Apple a Day: Providing Consumer Health Information in a Public Library</i> and <i>Prescription for Success: Consumer Health Information on the Internet</i> , Santa Cruz Public Libraries, Santa Cruz, CA (<i>NN/LM PSR Presentation</i>)
April 2005	

13 – 16	American College of Physicians, http://www.acponline.org/cme/as/2005/?hp , San Francisco, CA (<i>NN/LM PSR Exhibit</i>)
28	NTCC, <i>PubMed</i> (1-day), http://nmlm.gov/mar/online/description.html , Berkeley, CA
29	NTCC, <i>TOXNET</i> (1-day), http://nmlm.gov/mar/online/description.html , Berkeley, CA
May 2005	
2	NTCC, <i>PubMed</i> (1-day), http://nmlm.gov/mar/online/description.html , Davis, CA
3	NTCC, <i>PubMed</i> (1-day), http://nmlm.gov/mar/online/description.html , Davis, CA
4	NTCC, <i>NLM Gateway & ClinicalTrials.gov</i> (half day), http://nmlm.gov/mar/online/description.html , Davis, CA
5	NTCC, <i>TOXNET</i> (1-day), http://nmlm.gov/mar/online/description.html , Davis, CA
15 – 19	Annual Meeting of the Medical Library Association, http://www.mlanet.org/am/am2005/index.html , San Antonio, TX
20 – 25	American Thoracic Society, http://thoracic.org , San Diego, CA (<i>NN/LM PSR Exhibit, 5/22-24/2005</i>)
June 2005	
1	Deadline for applying for the National Library of Medicine Extramural Program grants, http://www.nlm.nih.gov/grants.html
23 – 29	2005 Annual Conference of the American Library Association, http://www.ala.org/ala/eventsandconferencesb/annual/2005a/home.htm , Chicago, IL

This article is freely available at: <http://nmlm.gov/psr/lat/v14n1/upcoming.html>

Publication Information

Latitudes, the newsletter of the Pacific Southwest Region, National Network of Libraries of Medicine (NN/LM) is published bi-monthly and electronically for the Pacific Southwest Region of NN/LM by the Regional Office. It is located at <http://nmlm.gov/psr/lat/>. The ISSN for *Latitudes* is 1544-743X.

Funded by the National Library of Medicine, National Institutes of Health, under a contract (#N01-LM-1-3517) with the UCLA Louise M. Darling Biomedical Library.

To receive *Latitudes* announcements as well as other information about the National Library of Medicine and the National Network of Libraries of Medicine, subscribe to the Regional email discussion list, PSR-News, by visiting the following Web page: <http://lists.ucla.edu/cgi-bin/mailman/listinfo/psr-news>. If you do not want to subscribe to PSR-News, but would like to receive *Latitudes* announcements go to <http://nmlm.gov/psr/lserv/lat/>.

Please send items and contributed articles for *Latitudes* to Julie Kwan, Editor, at jkkwan@library.ucla.edu.

Contact Information

UCLA Louise M. Darling Biomedical Library
National Network of Libraries of Medicine, Pacific Southwest Region
12-077 CHS
Box 951798

Los Angeles, CA 90095-1798

Phone: (310)825-1200 or (800)338-7657

Fax: (310)825-5389

URL: <http://nnlm.gov/psr/>

Staff

Judy Consales, MLS, Director, consales@library.ucla.edu

Heidi Sandstrom, RN, PHN, MLIS, Associate Director, heidits@library.ucla.edu

Alan Carr, MLS, AHIP, Outreach Coordinator, acarr@library.ucla.edu

Kay Deeney, MLS, AHIP, Education Coordinator, kdeeney@library.ucla.edu

Julie Kwan, MS, AHIP, Library Network Coordinator, jkkwan@library.ucla.edu

Vacant, Consumer Health Coordinator

Andrea Lynch, MLIS, Network Assistant, andlynch@library.ucla.edu

Nadene McDonald, Administrative Assistant, mcdonald@library.ucla.edu

Michael Miller, Technology Coordinator, mmiller@library.ucla.edu

Karen Ricard, Office Manager, kricard@library.ucla.edu

Jeanneth Quevedo, Office Assistant, jquevedo@library.ucla.edu

NOTE: This is a newsletter. Links are up-to-date when the newsletter is published; they are not updated afterwards.

This article is freely available at: http://nnlm.gov/psr/lat/v14n1/pub_info.html
