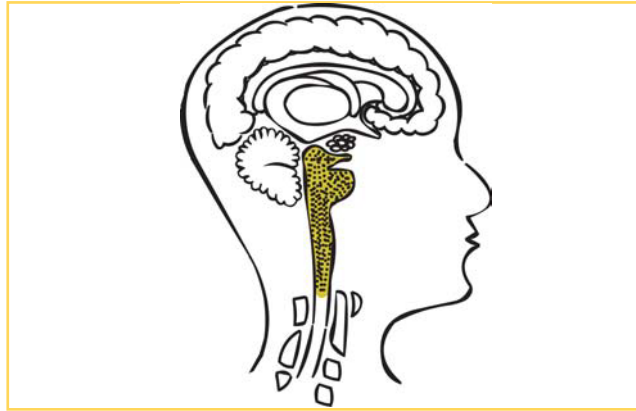


NIDA BRAIN STEM

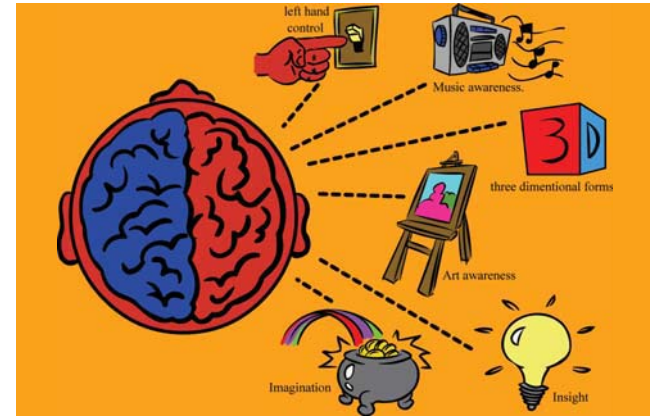


The brain stem tells your body to do all the things you need to do to live—breathe, pump blood, sleep, wake up, and digest food. Most of the time, you don't even know it's doing all that work! Your brain stem is only 3 inches long. Can you find it?



The brain stem is in the back, just above where the head and the neck join.

NIDA RIGHT HEMISPHERE

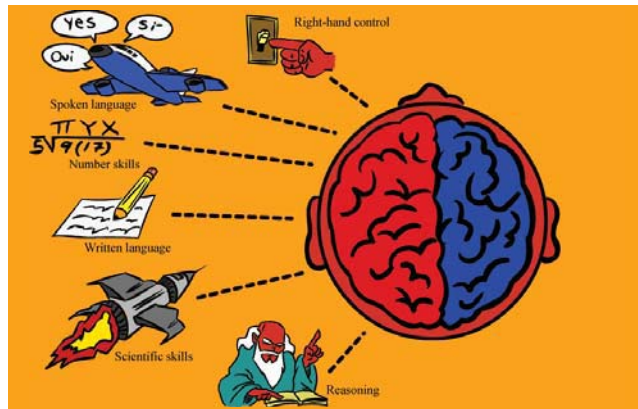


The right half of your brain is your artistic side. This is where your talent for painting or drawing comes from. The right half of the brain also controls movement on the left side of the body.



NIDA

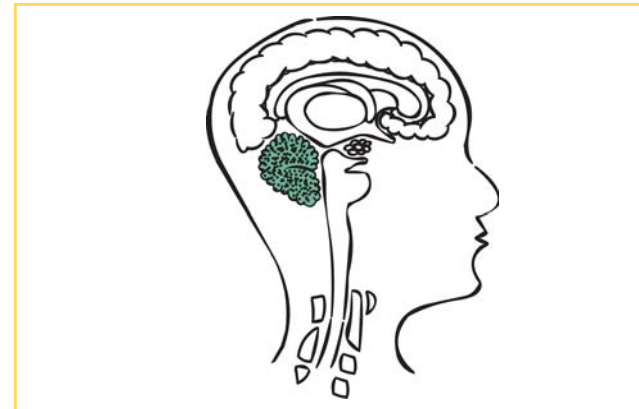
NIDA LEFT HEMISPHERE



The left half of your brain is your thinking side. This is where your talent for math and talking comes from. The left half of the brain also controls movement on the right side of the body.



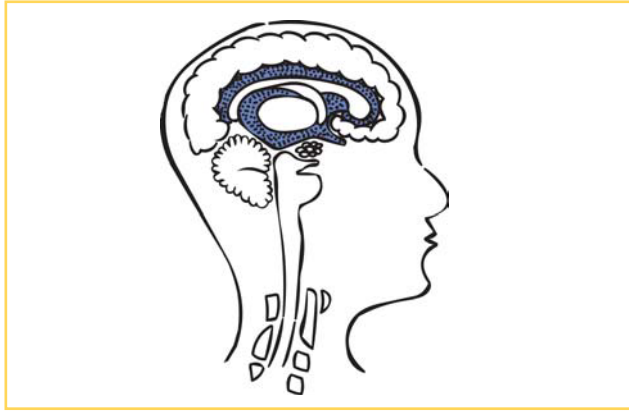
NIDA CEREBELLUM



Cerebellum means "little brain." The cerebellum helps you jump, walk, play ball, and pick things up. It controls all of your movements and balance. Your cerebellum is the reason you don't fall over all the time!



NIDA LIMBIC SYSTEM

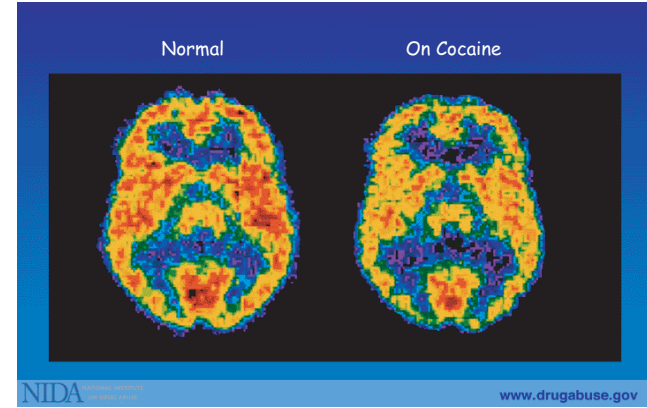


The limbic system is a special spot deep inside the brain. The limbic system is where your emotions live. Can you name some emotions? Memories also live in the limbic system.



There are many emotions, like happiness, sadness, anger, embarrassment, and joy.

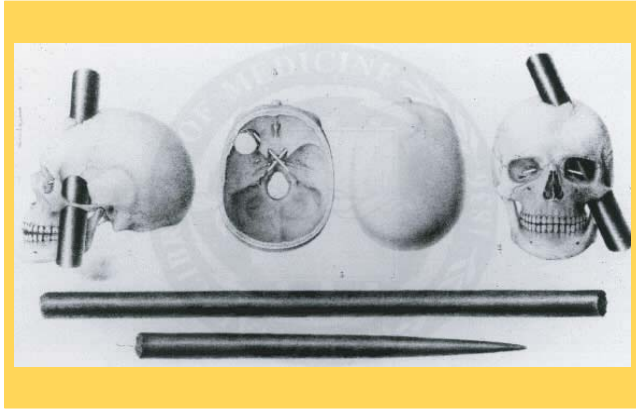
NIDA PET SCAN



PET scans are special pictures of the brain. These pictures let doctors and scientists look inside a person's brain. In this picture, red shows the parts of the brain that are working hardest. The brain on cocaine has fewer red spots! What do you do think that means?



NIDA PHINEAS GAGE



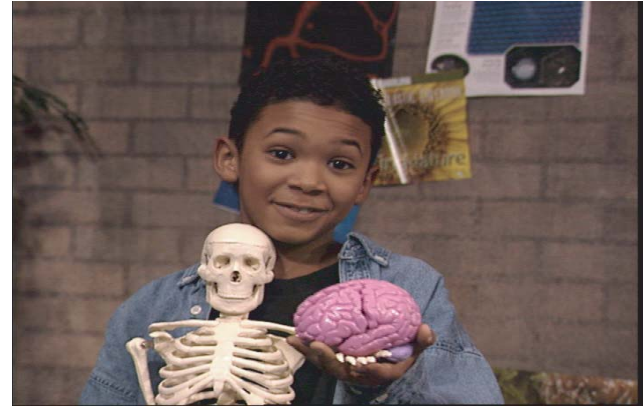
Phineas Gage worked on the railroads. He was in a terrible accident. A railroad track exploded, and a spike entered his brain. Phineas lived, but he became a different person. He went from being nice to being nasty. Why do you think this happened?



The spike damaged Phineas' brain—probably part of the limbic system, which controls emotions.



NIDA JUAN, BRAIN WAVE



Meet Juan, a member of the Brain Power Club. Juan's club name is Brain Wave. When there's a mission for the club, Juan is always the first in line. Juan's favorite things to do are riding his skateboard and completing missions from the NIDA Junior Scientists Mission Control Center!



NIDA BETH, BRAIN STORM



Here's Beth, a member of the Brain Power Club. Beth's club name is Brain Storm! Beth uses her imagination to help complete the missions. Beth's favorite thing to do is to daydream about being a scientist someday!



NIDA