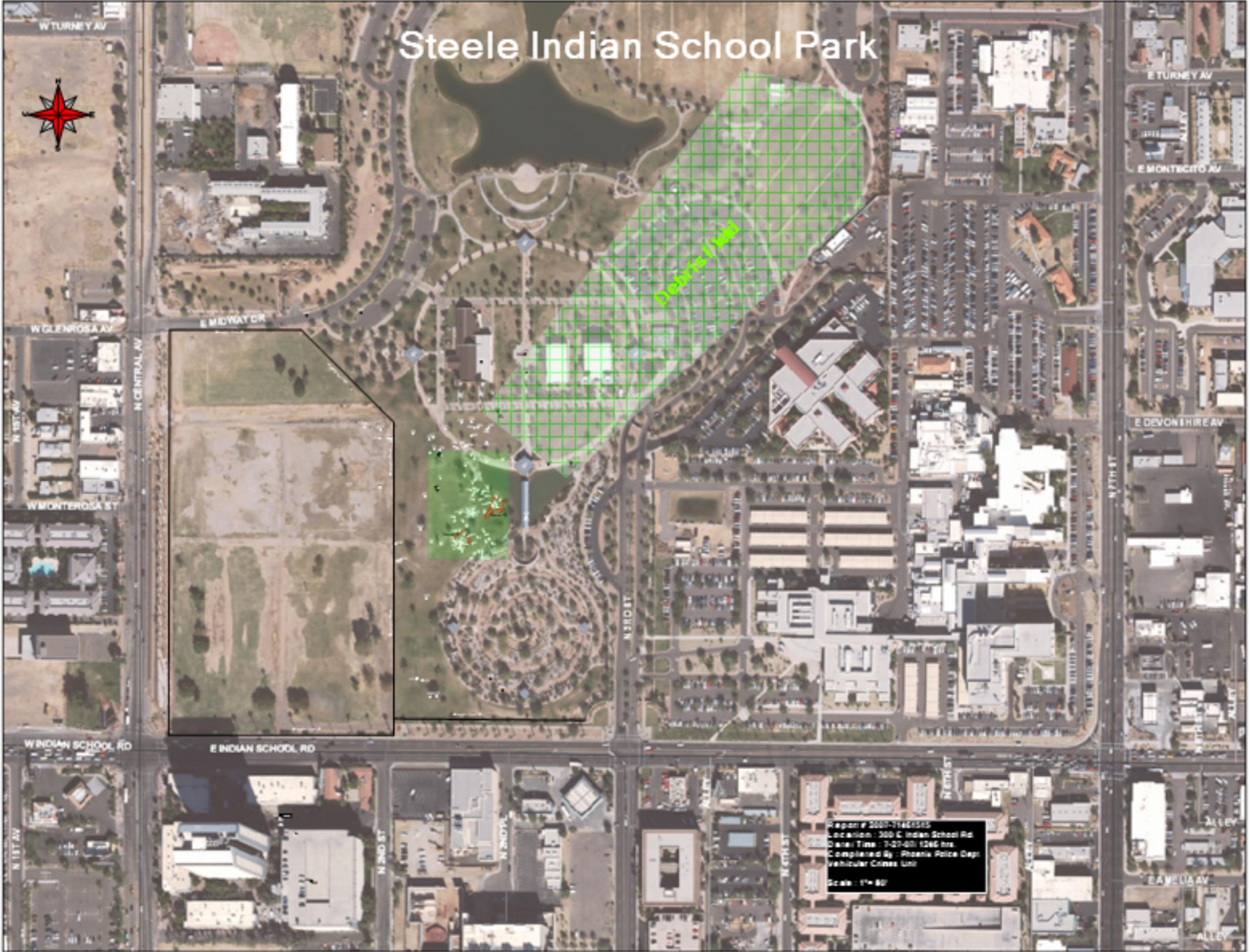


# Steele Indian School Park



Report # 2007-166156  
Location: 300 E Indian School Rd  
Case Time: 3:32:00, 12/6/06  
Completed By: Phoenix Police Dep.  
Vehicular Crimes Unit  
Scale: 1" = 80'

1	0	0	0	0 Reference Point	2	1	-1.7E+07
2	0	26.10512	-2.02972	0 BACKSIGHT	2	1	-1.7E+07
3	-247.763	156.9588	-1.91483	0 Wrought iron fence	2	1	-1.7E+07
4	-256.285	355.475	-0.9717	0 Wrought iron fence	2	1	-1.7E+07
5	-133.616	281.5043	3.364547	0 1- Tail Rotor Assembl	2	1	-1.7E+07
6	-131.586	281.564	3.431381	0 1- Continued	2	1	-1.7E+07
7	-129.424	278.0928	3.390449	0 1- Continued	2	1	-1.7E+07
8	-130.153	282.7817	3.297395	0 1- Continued	2	1	-1.7E+07
9	-127.872	286.4088	3.183161	0 1- Continued	2	1	-1.7E+07
10	-130.568	281.6892	3.885042	0 1- End of Tail Rotor A	2	1	-1.7E+07
11	-145.059	297.5466	2.790077	0 2- Red Beacon Bulb ,	2	1	-1.7E+07
12	-149.041	329.7827	0.594834	0 3- Grey Seat Cushior	2	1	-1.7E+07
13	-160.097	323.7098	1.068721	0 4- Small Wing Tip Pa	2	1	-1.7E+07
14	-156.064	285.6968	2.710349	0 5- Small Clear Lens E	2	1	-1.7E+07
15	-205.733	337.4605	-1.0327	0 6- Grey Painted Fiber	2	1	-1.7E+07
16	-128.73	295.4561	2.837527	0 7- Grey Metal Air Duc	2	1	-1.7E+07
17	-124.359	216.0996	-1.46578	0 8- Tan Fiberglass Ap	2	1	-1.7E+07
18	-137.707	192.4436	-2.77735	0 9- Tail Ser Red Orange and White Te	2	1	-1.7E+07
19	-136.204	191.3517	-2.94263	0 9- Continued	2	1	-1.7E+07
20	-135.003	191.6746	-3.00292	0 9- Continued	2	1	-1.7E+07
21	-132.306	182.4387	-3.90039	0 9- Continued	2	1	-1.7E+07
22	-130.963	182.8135	-3.99017	0 9- Continued	2	1	-1.7E+07
23	-130.86	185.7731	-3.81624	0 9- Continued	2	1	-1.7E+07
24	-132.326	189.4669	-3.39869	0 9- Continued	2	1	-1.7E+07
25	-133.382	192.2936	-3.10969	0 9- Continued	2	1	-1.7E+07
26	-130.487	193.8588	-3.20441	0 9- End of Ch. 3 Tail S	2	1	-1.7E+07
27	-164.046	164.6019	-0.31526	0 10- Small Black Nylon	2	1	-1.7E+07
28	26.35957	147.6959	-0.45123	0 11- Start of Ch. 15 Wr	2	1	-1.7E+07
29	19.29378	149.8219	-0.92769	0 Continued	2	1	-1.7E+07
30	21.52526	145.0291	-1.24352	0 Continued	2	1	-1.7E+07
31	22.32946	144.4621	-1.27605	0 Continued	2	1	-1.7E+07
32	23.01436	144.4863	-1.26181	0 Continued	2	1	-1.7E+07
33	24.41036	145.7493	-0.83245	0 Continued	2	1	-1.7E+07
34	28.99977	158.4575	-0.13994	0 Continued	2	1	-1.7E+07
35	29.43635	154.7143	-0.5099	0 Continued	2	1	-1.7E+07
36	33.48601	150.3454	-0.79126	0 Continued	2	1	-1.7E+07
37	35.19823	152.8389	-0.75094	0 Continued	2	1	-1.7E+07
38	35.2399	143.7841	-0.31483	0 Continued	2	1	-1.7E+07
39	41.93402	143.3621	-0.90627	0 Continued	2	1	-1.7E+07
40	39.10817	143.029	-0.84289	0 Continued	2	1	-1.7E+07
41	36.19143	142.8147	-0.91428	0 Continued	2	1	-1.7E+07
42	29.58089	139.6098	-0.86114	0 End of Ch. 15 Wrecka	2	1	-1.7E+07
43	1.719586	127.5788	-2.72091	0 Start of Ch. 15 Burn P	2	1	-1.7E+07
44	17.80275	143.0534	-1.3925	0 Continued	2	1	-1.7E+07
45	17.6006	139.5901	-1.60845	0 Continued	2	1	-1.7E+07
46	15.83798	136.0922	-2.0697	0 Continued	2	1	-1.7E+07
47	13.24103	133.853	-2.39448	0 Continued	2	1	-1.7E+07
48	9.928431	129.4258	-2.97981	0 Continued	2	1	-1.7E+07
49	8.019921	123.0005	-3.56744	0 Continued	2	1	-1.7E+07
50	6.530984	120.4294	-3.73893	0 Continued	2	1	-1.7E+07
51	4.886119	120.1578	-3.70332	0 Continued	2	1	-1.7E+07
52	4.155642	119.5847	-3.70471	0 Continued	2	1	-1.7E+07

53	4.955407	117.8782	-3.84934	0 Continued	2	1	-1.7E+07
54	7.159065	116.7899	-3.9455	0 Continued	2	1	-1.7E+07
55	7.41686	114.7449	-4.07113	0 Continued	2	1	-1.7E+07
56	7.298113	111.922	-4.17391	0 Continued	2	1	-1.7E+07
57	11.40477	112.6528	-4.22158	0 Continued	2	1	-1.7E+07
58	12.55278	115.6338	-4.12987	0 Continued	2	1	-1.7E+07
59	16.30807	120.595	-3.88737	0 Continued	2	1	-1.7E+07
60	20.87858	123.7628	-3.59422	0 Continued	2	1	-1.7E+07
61	23.99768	125.4631	-3.36594	0 Continued	2	1	-1.7E+07
62	22.03598	130.0545	-2.88433	0 Continued	2	1	-1.7E+07
63	24.33879	134.7709	-2.04579	0 Continued	2	1	-1.7E+07
64	28.57074	134.338	-1.89368	0 Continued	2	1	-1.7E+07
65	30.59153	137.7211	-1.23187	0 Continued	2	1	-1.7E+07
66	35.95831	139.0544	-1.10511	0 Continued	2	1	-1.7E+07
67	40.34513	140.4278	-1.08508	0 Continued	2	1	-1.7E+07
68	42.52715	136.8099	-1.34255	0 Continued	2	1	-1.7E+07
69	43.02613	131.8204	-1.69599	0 Continued	2	1	-1.7E+07
70	48.61569	127.9593	-1.81536	0 Continued	2	1	-1.7E+07
71	56.39417	160.2194	-1.8316	0 Continued	2	1	-1.7E+07
72	49.51101	161.7695	-1.52364	0 Continued	2	1	-1.7E+07
73	42.92103	165.5032	-1.22943	0 Continued	2	1	-1.7E+07
74	36.87539	170.6196	-0.98661	0 Continued	2	1	-1.7E+07
75	27.3219	168.7319	-0.38896	0 Continued	2	1	-1.7E+07
76	22.0796	162.8288	-0.00769	0 Continued	2	1	-1.7E+07
77	17.92443	155.2987	-0.51821	0 Continued	2	1	-1.7E+07
78	17.25955	148.0762	-1.04423	0 End of Ch. 15 Burn Pa	2	1	-1.7E+07
79	33.68689	171.0539	-0.82115	0 12- Large Sheet Meta	2	1	-1.7E+07
80	43.25485	162.1587	-1.10864	0 13- Sheet Metal Pane	2	1	-1.7E+07
81	-30.662	125.8119	-1.67903	0 14- Red and White pa	2	1	-1.7E+07
82	-78.7442	102.7071	-2.12579	0 15- Small Fiberglass E	2	1	-1.7E+07
83	-45.4542	87.41788	-1.95848	0 16- Small Metal Fram	2	1	-1.7E+07
84	-55.5739	99.78951	-1.92932	0 17- Small Crumpled C	2	1	-1.7E+07
85	3.461752	73.42931	-3.44679	0 18- Small I Tan and White)	2	2	-1.7E+07
86	9.114127	66.00641	-2.72758	0 19- Small Piece of Pa	2	1	-1.7E+07
87	17.27863	54.20374	-1.50131	0 20- 1" Diameter Bent	2	1	-1.7E+07
88	26.75396	42.19234	-0.34571	0 21- 1" Diameter Bent	2	1	-1.7E+07
89	9.194811	48.81661	-1.19773	0 22- "T" Shaped Plastic	2	1	-1.7E+07
90	-14.6843	57.79812	-1.3168	0 23- Plastic Panel App	2	1	-1.7E+07
91	-26.6499	40.22931	0.133802	0 24- Plastic and Fiberg	2	1	-1.7E+07
92	-8.92149	17.62506	-1.98331	0 25- Ch. 3 Metal Fusel	2	1	-1.7E+07
93	-18.7132	13.31844	-1.87678	0 26- Grey Seat Cushio	2	1	-1.7E+07
94	-27.7616	-0.72966	-1.52048	0 27- Ch. 3 Door (Tan C	2	1	-1.7E+07
95	-55.1663	20.23779	-1.50545	0 28- Two Black Window	2	1	-1.7E+07
96	-62.4341	25.14618	-1.77345	0 29- Electronic Video S	2	1	-1.7E+07
97	-56.9283	25.38387	-1.54325	0 30- Green Electronic (	2	1	-1.7E+07
98	-61.4416	30.5723	-1.80507	0 31- Five Green Electr	2	1	-1.7E+07
99	-53.2389	36.63528	-1.20654	0 32- Ch. 3 Exterior Mo	2	1	-1.7E+07
100	-52.3177	35.16409	-1.11124	0 Continued	2	1	-1.7E+07
101	-49.1075	34.1585	-0.75927	0 Continued	2	1	-1.7E+07
102	-45.2801	33.54123	-0.40849	0 End of Ch. 3 exterior I	2	1	-1.7E+07
103	-51.4716	63.48602	-1.76173	0 33- Ch. 3 Door painte	2	1	-1.7E+07
104	-64.8602	72.61001	-1.85099	0 34- Small Green Meta	2	1	-1.7E+07

105	-74.9728	72.76869	-1.88394	0 35- 1" Diameter Grey	2	1	-1.7E+07
106	-114.761	34.8632	-0.31449	0 36- Root Blade	2	1	-1.7E+07
107	-141.37	39.05332	3.138485	0 37- Rear Case of Port	2	1	-1.7E+07
108	-240.482	29.6292	-2.56987	0 38- Small Black Crafr	2	1	-1.7E+07
109	-232.791	-16.2478	-2.92115	0 39- 13" Bo Inc.PHX 2891"	2	1	-1.7E+07
110	-224.135	-13.7109	-2.1494	0 40- Video Screen Mot	2	1	-1.7E+07
111	-70.1973	47.74881	-1.93538	0 41-Ch. 3 Right Side la	2	1	-1.7E+07
112	-67.3917	46.99216	-1.90499	0 Continued	2	1	-1.7E+07
113	-62.266	45.43613	-1.65893	0 End of Right Side Lan	2	1	-1.7E+07
114	-72.2169	40.02996	-1.82391	0 41- Ch. 3 Left Side La	2	1	-1.7E+07
115	-68.2193	38.76487	-1.46095	0 Continued	2	1	-1.7E+07
116	-62.3809	37.07712	-1.82297	0 End of Ch. 3 Left Side	2	1	-1.7E+07
117	-57.0222	37.85206	-1.53635	0 41- Front of Wreckage	2	1	-1.7E+07
118	-76.6582	43.53514	-1.95843	0 41- back of Wreckage	2	1	-1.7E+07
119	-73.1531	38.22595	-1.86586	0 41- Rotor	2	1	-1.7E+07
120	-64.2534	44.88578	-0.89556	0 41- Body of Ch. 3 Car	2	1	-1.7E+07
121	-61.2291	41.73365	-0.18711	0 41- Body of Ch. 3 pilo	2	1	-1.7E+07
122	-75.3627	44.98312	-2.00857	0 41- Burn Pattern of Cl	2	1	-1.7E+07
123	-77.144	48.24758	-1.89452	0 Continued	2	1	-1.7E+07
124	-78.767	53.18076	-1.92249	0 Continued	2	1	-1.7E+07
125	-77.589	53.57502	-1.95561	0 Continued	2	1	-1.7E+07
126	-72.8989	57.34399	-1.84009	0 Continued	2	1	-1.7E+07
127	-68.4694	61.0283	-1.85857	0 Continued	2	1	-1.7E+07
128	-66.5991	61.48284	-1.84521	0 Continued	2	1	-1.7E+07
129	-66.9199	64.27904	-1.81997	0 Continued	2	1	-1.7E+07
130	-66.6464	66.92548	-1.87518	0 Continued	2	1	-1.7E+07
131	-63.227	70.138	-1.87168	0 Continued	2	1	-1.7E+07
132	-58.7984	74.96053	-1.88297	0 Continued	2	1	-1.7E+07
133	-52.8281	72.47922	-1.91807	0 Continued	2	1	-1.7E+07
134	-50.661	65.37848	-1.79971	0 Continued	2	1	-1.7E+07
135	-45.4743	61.48281	-1.55633	0 Continued	2	1	-1.7E+07
136	-40.0229	54.25045	-1.20634	0 Continued	2	1	-1.7E+07
137	-35.734	52.10251	-0.83602	0 Continued	2	1	-1.7E+07
138	-34.7768	44.4492	0.050251	0 Continued	2	1	-1.7E+07
139	-43.8397	39.10931	-0.19523	0 Continued	2	1	-1.7E+07
140	-50.2305	36.11932	-0.92323	0 Continued	2	1	-1.7E+07
141	-51.2687	29.59296	-1.14059	0 Continued	2	1	-1.7E+07
142	-59.1958	27.70487	-1.73593	0 End of Ch. 3 Burn Pat	2	1	-1.7E+07
143	-85.7226	88.42188	-1.74192	0 Control Point	2	1	-1.7E+07
144	-74.1377	123.2872	-2.03659	0 Control Point	2	1	-1.7E+07
145	-43.0684	108.7169	-1.32036	0 Control Point	2	1	-1.7E+07
146	12.3951	265.3567	5.5906	0 Reference Point # 2	2	1	-1.7E+07
147	-80.7365	111.1578	-2.1649	0 42- 3" Metal half Tube	2	1	-1.7E+07
148	-35.317	121.8563	-1.67703	0 43- Start of 2' Wide Bl	2	1	-1.7E+07
149	-41.8754	119.3621	-1.58742	0 43- End of Blood Line	2	1	-1.7E+07
150	-27.2524	135.2352	-1.14867	0 44-Start of Small Bloo	2	1	-1.7E+07
151	-31.1709	132.6585	-1.30798	0 44-End of Blood Line	2	1	-1.7E+07
152	-24.5297	125.8586	-1.86739	0 45- Start of Blood Line	2	1	-1.7E+07
153	-28.7955	122.7646	-1.89607	0 Continued	2	1	-1.7E+07
154	-31.6202	118.3944	-1.94237	0 45- End of Blood Line	2	1	-1.7E+07
155	-66.6854	122.9404	-2.26306	0 46- Start of Blood Line	2	1	-1.7E+07
156	-61.582	124.896	-2.09192	0 46- Small Blood Line i	2	1	-1.7E+07

157	-79.9144	43.25986	-1.67107	0 47-VHS TAPE	2	1	-1.7E+07
158	-28.5449	161.098	-0.90465	0 48- Black Rubber Win	2	1	-1.7E+07
159	-11.5652	162.0389	-0.57396	0 49- Blade Weight	2	1	-1.7E+07
160	4.35197	173.3089	0.070822	0 50- Fiberglass rail Fra	2	1	-1.7E+07
161	-1.29227	186.8208	-0.29461	0 51- White Plastic Pad	2	1	-1.7E+07
162	8.117062	196.0605	-1.68727	0 52- Plexiglass Panel F	2	1	-1.7E+07
163	-6.46854	183.2164	0.060489	0 53- 7" Long White Me	2	1	-1.7E+07
164	-19.8908	187.6056	0.153041	0 54- Metal Bulb Housir	2	1	-1.7E+07
165	-28.8775	180.7132	-0.43726	0 55- Small Black Wind	2	1	-1.7E+07
166	-32.9233	175.5428	-0.5518	0 56- Interior Fiberglass	2	1	-1.7E+07
167	-38.9219	187.7015	-0.70225	0 57- 1x1 Fiberglass pa	2	1	-1.7E+07
168	-30.7631	192.2797	-0.35879	0 58- Coil of "Multimicro	2	1	-1.7E+07
169	-34.5736	206.2964	-0.46831	0 59- Tear Shaped met	2	1	-1.7E+07
170	-27.3905	216.6026	-0.96648	0 60- Fiberglass and Vir	2	1	-1.7E+07
171	-57.4747	226.1319	0.231209	0 61- Fibergl Green Pink and White in Color B			
172	-56.1396	254.1814	-0.32254	0 62- Pink and Purple P	2	1	-1.7E+07
173	-33.4989	275.351	-0.56287	0 63- Small Grey Sheet	2	1	-1.7E+07
174	-42.2299	284.7298	-0.02781	0 64- 6x6" Square Meta	2	1	-1.7E+07
175	-81.3097	303.9156	0.176651	0 65- 3" Metal Half Tub	2	1	-1.7E+07
176	-89.887	306.9266	0.392462	0 66- Grey Metal Ring v	2	1	-1.7E+07
177	-117.023	354.6955	-0.20122	0 67- Tan Fiberglass Fr	2	1	-1.7E+07
178	-72.624	374.1552	-1.20602	0 68- Metal Winglet with	2	1	-1.7E+07
179	-44.9469	377.5721	-1.15904	0 69- Tan fib Approx. 1'x1'		2	1
180	-26.4171	362.9269	-1.2601	0 70- Small piece of twi	2	1	-1.7E+07
181	-36.2718	361.5416	-1.30255	0 71- Thin m Approx. 1.5' long		2	1
182	-43.2898	338.7254	-1.07165	0 72- Small piece of she	2	1	-1.7E+07
183	-61.169	308.2961	-0.0427	0 73- 1' section of fiberc	2	1	-1.7E+07
184	-55.6056	311.1268	-0.18366	0 74- Gray seat cushion	2	1	-1.7E+07
185	-0.30209	321.5787	-0.88027	0 75- Door panel section	2	1	-1.7E+07
186	-1.27678	358.3659	-0.86018	0 76- 2.5' long metal tail	2	1	-1.7E+07
187	3.630506	363.2229	-1.01631	0 77- Gray interior shee	2	1	-1.7E+07
188	34.09344	398.5296	-0.82803	0 78- Small white plastic	2	1	-1.7E+07
189	27.06582	409.089	-0.83527	0 79- Twisted orange st	2	1	-1.7E+07
190	46.27589	276.1547	-0.35871	0 80- USA mobility unic	2	1	-1.7E+07
191	74.75764	276.1645	-2.28419	0 81- Small sheet metal	2	1	-1.7E+07
192	173.9733	268.9861	0.096764	0 82- Pink fiberglass fra	2	1	-1.7E+07
193	235.6853	276.3278	-2.52509	0 83- Large fuselage pa	2	1	-1.7E+07
194	236.6121	271.0848	-2.47114	0 84- Large fuselage pa	2	1	-1.7E+07
195	119.0596	119.8821	0.072499	0 85- Small electric mot	2	1	-1.7E+07
196	-122.82	395.2813	-0.52395	0 Control Point	2	1	-1.7E+07
197	-112.072	423.284	-0.48547	0 Control Point	2	1	-1.7E+07
198	-184.419	427.8878	-0.07774	0 Control Point	2	1	-1.7E+07
199	-237.168	411.2589	10.3462	0 Reference Point # 3	2	1	-1.7E+07
200	-164.442	432.0266	-0.37428	0 11C- Fiberglass fragrn	2	1	-1.7E+07
201	-290.329	184.71	-0.32169	0 1C- Broken root blade	2	1	-1.7E+07
202	-297.329	320.494	-1.49881	0 2C- Broken root blade	2	1	-1.7E+07
203	-273.552	321.5317	-1.15655	0 3C- Air intake	2	1	-1.7E+07
204	-265.419	320.6941	-1.17977	0 4C- Ash tray	2	1	-1.7E+07
205	-295.381	344.8252	-1.73796	0 5C- Professional vide	2	1	-1.7E+07
206	-340.54	349.4299	-0.74378	0 6C- Fiberglass blade	2	1	-1.7E+07
207	-514.798	652.7026	0.785707	0 7C- Blade fragment	2	1	-1.7E+07
208	-110.486	68.8313	-0.31828	0 Control Point	2	1	-1.7E+07

209	-94.9885	45.62735	-1.70429	0 Control Point	2	1	-1.7E+07
210	-104.783	26.89255	-1.60044	0 Control Point	2	1	-1.7E+07
211	-143.951	-402.932	7.0622	0 Reference Point # 4	2	1	-1.7E+07
212	-149.837	-346.229	-3.25251	0 86- Rotor blade fragm	2	1	-1.7E+07
213	-1.12215	-339.226	-1.26569	0 Control Point	2	1	-1.7E+07
214	-13.2616	-363.47	-3.06508	0 Control Point	2	1	-1.7E+07
215	0.822525	-353.006	-2.40785	0 Control Point	2	1	-1.7E+07
216	-126.189	-391.122	0.932526	0 87-Unknown	2	1	-1.7E+07
217	-108.061	-388.481	1.181124	0 88- Unknown	2	1	-1.7E+07
218	-110.486	68.8313	-0.31828	0 Control Point	2	1	-1.7E+07
219	-94.9885	45.6274	-1.81828	0 Control Point	2	1	-1.7E+07
220	-104.838	26.6728	-1.65828	0 Control Point	2	1	-1.7E+07
221	-165.086	-340.293	-0.06828	0 F- Rotar st Start		2	1
222	-165.806	-344.146	0.07172	0 F- Rotar strike in gras	2	1	-1.7E+07
223	-148.818	-118.451	4.05172	0 G- Blade strands stuc	2	1	-1.7E+07
224	-25.8559	266.6773	-3.62828	0 West pond Not shown		2	1
225	-26.1399	256.4274	-3.81828	0 Continued	2	1	-1.7E+07
226	-25.0957	251.537	-3.81828	0 Continued	2	1	-1.7E+07
227	-23.4199	247.8237	-3.79828	0 Continued	2	1	-1.7E+07
228	-5.22601	211.0411	-3.80828	0 Continued	2	1	-1.7E+07
229	-1.8943	206.2559	-3.83828	0 Continued	2	1	-1.7E+07
230	2.011398	202.8256	-3.84828	0 Continued	2	1	-1.7E+07
231	6.636101	199.9156	-3.83828	0 Continued	2	1	-1.7E+07
232	14.7869	195.7212	-3.92828	0 Continued	2	1	-1.7E+07
233	23.06149	192.4027	-3.90828	0 Continued	2	1	-1.7E+07
234	29.89619	190.015	-3.89828	0 Continued	2	1	-1.7E+07
235	32.4359	189.1099	-3.92828	0 Continued	2	1	-1.7E+07
236	39.79669	186.1036	-3.91828	0 Continued	2	1	-1.7E+07
237	44.95799	183.5262	-3.96828	0 Continued	2	1	-1.7E+07
238	49.9044	180.3394	-3.99828	0 Continued	2	1	-1.7E+07
239	53.5379	177.6783	-3.97828	0 Continued	2	1	-1.7E+07
240	56.7677	174.6202	-3.95828	0 Continued	2	1	-1.7E+07
241	59.1898	171.7286	-3.97828	0 Continued	2	1	-1.7E+07
242	62.8299	166.5059	-3.99828	0 Continued	2	1	-1.7E+07
243	64.69839	163.4512	-3.79828	0 Continued	2	1	-1.7E+07
244	67.06799	158.6959	-3.75828	0 Continued	2	1	-1.7E+07
245	68.9631	153.8009	-3.75828	0 Continued	2	1	-1.7E+07
246	71.6673	146.0572	-3.79828	0 Continued	2	1	-1.7E+07
247	75.10809	135.5219	-3.80828	0 Continued	2	1	-1.7E+07
248	77.77769	127.4065	-3.83828	0 Continued	2	1	-1.7E+07
249	79.50949	122.1043	-3.82828	0 Continued	2	1	-1.7E+07
250	81.75459	116.7334	-3.86828	0 Continued	2	1	-1.7E+07
251	83.9603	112.5518	-3.86828	0 Continued	2	1	-1.7E+07
252	86.9839	108.1941	-3.97828	0 Continued	2	1	-1.7E+07
253	94.1109	98.783	-4.01828	0 Continued	2	1	-1.7E+07
254	99.153	94.4993	-4.03828	0 Continued	2	1	-1.7E+07
255	102.9948	93.0879	-4.12828	0 Continued	2	1	-1.7E+07
256	101.7586	122.3097	-4.17828	0 Continued	2	1	-1.7E+07
257	101.7787	123.7517	-4.11828	0 Continued	2	1	-1.7E+07
258	100.3023	152.2529	-4.09828	0 Continued	2	1	-1.7E+07
259	100.5117	153.7127	-4.04828	0 Continued	2	1	-1.7E+07
260	98.9138	182.2489	-3.95828	0 Continued	2	1	-1.7E+07

261	99.0047	183.6738	-3.93828	0 Continued	2	1	-1.7E+07
262	97.6295	212.1492	-3.89828	0 Continued	2	1	-1.7E+07
263	97.08389	233.1932	-3.70828	0 Continued	2	1	-1.7E+07
264	82.338	245.5597	-3.19828	0 Continued	2	1	-1.7E+07
265	73.0863	246.3857	-3.19828	0 Continued	2	1	-1.7E+07
266	65.5592	246.8931	-3.18828	0 Continued	2	1	-1.7E+07
267	54.252	248.0538	-3.18828	0 Continued	2	1	-1.7E+07
268	41.987	249.8652	-3.19828	0 Continued	2	1	-1.7E+07
269	32.3382	251.5753	-3.15828	0 Continued	2	1	-1.7E+07
270	23.4512	253.2571	-3.13828	0 Continued	2	1	-1.7E+07
271	15.7282	254.8672	-3.12828	0 Continued	2	1	-1.7E+07
272	8.673599	256.5252	-3.10828	0 Continued	2	1	-1.7E+07
273	2.086998	258.2426	-3.09828	0 Continued	2	1	-1.7E+07
274	-4.55541	260.0979	-3.08828	0 Continued	2	1	-1.7E+07
275	-10.7886	261.9802	-3.08828	0 Continued	2	1	-1.7E+07
276	-17.2578	264.2429	-3.06828	0 Continued	2	1	-1.7E+07
277	-25.9707	267.5132	-3.11828	0 End of outline	2	1	-1.7E+07
278	-256.218	354.9278	0.87172	0 FENCE CORNER	2	1	-1.7E+07
279	-220.005	-494.78	1.42172	0 FENCE CORNER	2	1	-1.7E+07
280	109.548	88.807	11.61172	0 WALKWAY ROOF	2	1	-1.7E+07
281	108.6261	217.7309	12.13172	0 WALKWAY ROOF	2	1	-1.7E+07
282	-173.053	73.3531	1.00172	0 H- Blade root under a	2	1	-1.7E+07
283	177.2889	114.8446	3.66172	0 E- Portion of the fuel c	2	1	-1.7E+07
284	-465.198	-777.37	58.67172	0 NORTH G. Not shown	2	1	
285	-312.399	-770.12	62.50172	0 NORTH G. Not shown	2	1	
286	262.4498	496.8787	23.66172	0 BUILDING Not shown	2	1	
287	257.0102	603.0566	28.08172	0 BUILDING Not shown	2	1	
288	337.0956	498.8844	40.76172	0 BUILDING Not shown	2	1	
289	211.953	493.9165	1.57172	0 BUILDING Not shown	2	1	
290	156.3182	492.2516	0.56172	0 BUILDING Not shown	2	1	
291	0.905197	484.793	-0.78828	0 BUILDING Not shown	2	1	
292	-88.5442	473.4543	12.85172	0 BUILDING Not shown	2	1	
293	-364.135	666.3055	0	0 Blade fragment	2	1	-1.7E+07
294	-433.153	-917.742	0	0 Impact area from rota	2	1	-1.7E+07
295	-431.692	-917.692	0	0 Broken rotar blade	2	1	-1.7E+07
296	-527.786	-741.813	0	0 Rotar strike on truck	2	1	-1.7E+07
297	-527.979	-746.73	0	0 Rotar strike on ground	2	1	-1.7E+07
298	-525.084	-762.773	0	0 Broken rotar blade	2	1	-1.7E+07
299	102.0816	521.3702	0	0 A- Trailing rotar edge	2	1	-1.7E+07
300	95.23707	571.046	0	0 B- Drive shaft (Channel 3)	2	1	
301	-24.741	545.1876	0	0 C- Portion (Channel 3)	2	1	
302	116.8009	116.1915	0	0 D- Impact in metal rock	2	1	-1.7E+07
303	38.69	-334.21	0	0 Broken rotar blade	2	1	-1.7E+07
304	74.25	-364.25	0	0 Impact area from rotar	2	1	-1.7E+07
305	1.445496	267.163	-1.62828	0 Sokkia Total Station	2	1	-1.7E+07













FALSE	TRUE	FALSE	
FALSE	TRUE	FALSE	
FALSE	TRUE	FALSE	
FALSE	TRUE	FALSE	
FALSE	TRUE	FALSE	
FALSE	TRUE	FALSE	
FALSE	TRUE	FALSE	
FALSE	TRUE	FALSE	
FALSE	TRUE	FALSE	
FALSE	TRUE	FALSE	
FALSE	TRUE	FALSE	
FALSE	TRUE	FALSE	
FALSE	TRUE	FALSE	
FALSE	TRUE	FALSE	
FALSE	TRUE	FALSE	
FALSE	TRUE	FALSE	
FALSE	TRUE	FALSE	
FALSE	TRUE	FALSE	
FALSE	TRUE	FALSE	
FALSE	TRUE	FALSE	
FALSE	TRUE	FALSE	
FALSE	TRUE	FALSE	
FALSE	TRUE	FALSE	
FALSE	TRUE	FALSE	
-1.7E+07	FALSE	TRUE	FALSE
-1.7E+07	FALSE	TRUE	FALSE
-1.7E+07	FALSE	TRUE	FALSE
-1.7E+07	FALSE	TRUE	FALSE
-1.7E+07	FALSE	TRUE	FALSE
-1.7E+07	FALSE	TRUE	FALSE
-1.7E+07	FALSE	TRUE	FALSE
-1.7E+07	FALSE	TRUE	FALSE
-1.7E+07	FALSE	TRUE	FALSE
FALSE	TRUE	FALSE	
FALSE	TRUE	FALSE	
FALSE	TRUE	FALSE	
FALSE	TRUE	FALSE	
FALSE	TRUE	FALSE	
FALSE	TRUE	FALSE	
FALSE	TRUE	FALSE	
FALSE	TRUE	FALSE	
-1.7E+07	FALSE	TRUE	FALSE
-1.7E+07	FALSE	TRUE	FALSE
FALSE	TRUE	FALSE	
FALSE	TRUE	FALSE	
FALSE	TRUE	FALSE	
FALSE	TRUE	FALSE	