

Electrostatic Potential on Human Leukocyte Antigen: Implications for Putative Mechanism of Chronic Beryllium Disease

James A. Snyder,¹ Ainsley Weston,^{1,2} Sally S. Tinkle,¹ and Eugene Demchuk^{1,3}

¹Health Effects Laboratory Division, National Institute for Occupational Safety and Health, Centers for Disease Control and Prevention, Morgantown, West Virginia, USA; ²Department of Plant and Soil Science, West Virginia University, Morgantown, West Virginia, USA; ³School of Pharmacy, West Virginia University, Morgantown, West Virginia, USA

The pathobiology of chronic beryllium disease (CBD) involves the major histocompatibility complex class II human leukocyte antigen (HLA). Although occupational exposure to beryllium is the cause of CBD, molecular epidemiologic studies suggest that specific *HLA-DPB1* alleles may be genetic susceptibility factors. We have studied three-dimensional structural models of HLA-DP proteins encoded by these genes. The extracellular domains of HLA-DPA1*0103/B1*1701, *1901, *0201, and *0401, and HLA-DPA1*0201/B1*1701, *1901, *0201, and *0401 were modeled from the X-ray coordinates of an HLA-DR template. Using these models, the electrostatic potential at the molecular surface of each HLA-DP was calculated and compared. These comparisons identify specific characteristics in the vicinity of the antigen-binding pocket that distinguish the different HLA-DP allotypes. Differences in electrostatics originate from the shape, specific disposition, and variation in the negatively charged groups around the pocket. The more negative the pocket potential, the greater the odds of developing CBD estimated from reported epidemiologic studies. Adverse impact is caused by charged substitutions in positions β 55, β 56, β 69, β 84, and β 85, namely, the exact same loci identified as genetic markers of CBD susceptibility as well as cobalt-lung hard metal disease. These findings suggest that certain substitutions may promote an involuntary cation-binding site within a putatively metal-free peptide-binding pocket and therefore change the innate specificity of antigen recognition. **Key words:** chronic beryllium disease, gene–environment interactions, genetic marker, genetic susceptibility, HLA-DP, human leukocyte antigen, lung, sensitization. *Environ Health Perspect* 111:1827–1834 (2003). doi:10.1289/txg.6327 available via <http://dx.doi.org/> [Online 11 August 2003]

Chronic beryllium disease (CBD) is a seriously debilitating, life-threatening occupational disease that occurs primarily among workers engaged in beryllium (Be) extraction and purification and preparation of Be metal and its alloys (Kolanz 2001; Powers 1991). High-risk, high-exposure job categories include machining and ceramics production (Kreiss et al. 1997). In addition, certain downstream users are also known to be at risk, for example, dental technicians who file or grind prostheses containing Be alloy (OSHA 2002). In addition, Be delivered on clothing or contaminated motor vehicles could constitute a risk to family members not actually employed in the Be industry (Sanderson et al. 1999).

CBD is generally recognized to be preceded by immunologic sensitization to the metal, a phenomenon shared with conditions related to a number of metals like gold, silver, nickel, vanadium, cobalt, chromium, and copper (Budinger and Hertl 2000; Lawrence and McCabe 2002). Skin sensitization to Be (BeS) was recognized 50 years ago, and a Be-lymphocyte proliferation test (BeLPT) was developed in the 1970s. Surveillance programs, using the BeLPT, identify approximately 10% of Be workers who are not symptomatic but who are sensitized. Be-sensitized individuals may progress to CBD, and approximately

2–5% of all Be workers develop CBD (Maier 2001).

The recognition that CBD appeared to affect a subset of exposed workers and included an immunologic component suggested a genetic basis for susceptibility to BeS and CBD. Anti-human leukocyte antigen (HLA) antibodies blocked the Be-specific proliferation response in lymphocytes of workers sensitized to Be (Saltini et al. 1989). Subsequently, a molecular epidemiologic study implicated *HLA-DPB1* encoding a glutamic acid in position 69 of the mature protein with susceptibility to CBD (Richeldi et al. 1993).

Recent studies have confirmed that genetic susceptibility to CBD involves HLA glycoproteins, T-cell receptor clonality, and have suggested the involvement of tumor necrosis factor polymorphisms (Tinkle et al. 2003). These HLA glycoproteins are heterodimers comprising an α -chain and a β -chain, which form an antigen-binding moiety. Binding of the antigen occurs in an elongated groove on the surface of this complex (Figure 1). The floor of the groove is composed of β -sheets, and the walls of α -helices (Li et al. 2000).

By September 2003, 106 different *HLA-DPB1* alleles had been described, 65 encoding lysine (K) at codon 69, 5 encoding arginine (R), and 36 encoding glutamic

acid (E) (EBI 2003; Marsh 2003). Data from molecular epidemiologic studies that used high-resolution allele-specific DNA-sequencing technology preliminarily suggest an *HLA-DPB1* allele hierarchy (Wang et al. 1999). Although numbers of study subjects are small, we have hypothesized that inheritance of certain alleles conveys more risk than others, with the following order: *HLA-DPB1**1701 (most risk) > *0601 > *0901 = *1001 > *1301 > *1901 = *0201 > *0401 (Rossman et al. 2002; Saltini et al. 2001; Tinkle et al. 2003; Wang et al. 1999, 2001).

To investigate the basis for the suggested interindividual genetic susceptibility to CBD, we constructed three-dimensional structural models of HLA-DP representing several distinct allotypes and calculated the electrostatic potential on the surface of these models. The allotypes were predicated upon two types of α -chain sequences and five types of β -chain sequences. The α -chain sequences encoded by *HLA-DPA1**0103 and *0201 alleles, and β -chains encoded by *HLA-DPB1**1701, *0201, *1901, *1301, and *0401 alleles were selected, allowing for 10 possible analytic models.

Materials and Methods

Molecular Modeling

There are no experimentally determined coordinates for HLA-DP in the Protein Data Bank (PDB; <http://www.rcsb.org/pdb/>). We modeled the extracellular part of HLA-DP by homology to a known HLA species. Overall, the primary, secondary, and tertiary structure in the class II family of major histocompatibility complex (MHC) is well conserved. We have selected one HLA-DR, PDB entry 1FV1 (*HLA-DRA**0101/*B5**0101; Li et al. 2000) as a template. Our choice was based on a

Address correspondence to E. Demchuk, NIOSH, MS-3030, 1095 Willowdale Rd., Morgantown, WV 26505 USA. Telephone: (304) 285-5869. Fax: (304) 285-6041. E-mail: edemchuk@cdc.gov

We thank A. Wlodawer and G. Vriend for helpful discussions. Public availability of WHATIF program is gratefully acknowledged.

The authors declare they have no conflict of interest. Received 11 March 2003; accepted 11 August 2003.

relatively good resolution of the template compared with other HLA entries (1.90 Å, R -factor = 0.233), the total number of crystallographically resolved residues, and the results of a sequence alignment using the GCG program (Accelrys, Inc., San Diego, CA).

The SYBYL 6.6 molecular modeling software (Tripos, Inc., St. Louis, MO) was used to make modifications to the HLA-DR template. It was first necessary to repair several residues in the template, in which coordinates of some side-chain (SC) atoms were missing. Next, specific SC substitutions were introduced, which converted the sequence of HLA-DR protein to that of HLA-DP. The deletion of two residues in the gap required reconstruction of one loop region. After addition of all hydrogen atoms, positions of the selected SC atoms and the backbone (BB) of the engineered loop were subjected to 50 iterations of the steepest descent minimization, followed by an exhaustive minimization using the Powell method (Powell 1977), until the full convergence by the energy gradient was reached. For minimization, the Kollman all-atom force field (Weiner et al. 1984) with distance-dependent

dielectric and a cutoff radius of 10 Å was used. All BB and C_{β} (except proline C_{β}) atoms were held fixed by treating them as a rigid body aggregate. Stereochemical quality of the HLA-DP model was tested using the WHATIF program (Vriend 1990). Modeled coordinate sets are available from the authors upon request.

Electrostatic Calculations

The electrostatic potential was calculated using the DelPhi module of the Insight II program (Accelrys). Insight II was also used to generate the isopotential surface maps. The electrostatic potential was calculated by numerically solving the linearized Poisson-Boltzmann equation using a finite difference method. The low-dielectric macromolecule (protein interior) was embedded in a high-dielectric continuum environment (water exterior). A solution with charged ions was simulated having an assigned ionic strength of 0.145, which typifies conditions at the physiologic pH. Using an ionic radius of 2.0 Å for the solvated ions, a Stern layer was constructed around the solvent-accessible surface, having a null ionic strength inside, which determines the maximum distance that an

ion can approach the solvent-accessible surface. The assigned temperature was 298 K. The resulting system was discretized on a grid, and the potential at the grid points was solved iteratively starting from the Debye-Hückel boundary conditions. To improve the accuracy of calculated potentials, we used a method of grid focusing. This involved three additional calculations in which the molecule was allowed to occupy a successively larger fraction of the cubic grid volume so that values of the potential at the grid boundary could be calculated using the larger grid from each preceding calculation. The grid dimensions were selected to be 1,200 Å (spacing 4 Å/grid point), 600 Å (spacing 2 Å/grid point), 300 Å (spacing 1 Å/grid point), and 100 Å (spacing 0.75 Å/grid point). The interior and exterior dielectric constants were 4 and 80, respectively. The solute boundary was defined by a solvent-accessible surface generated by a rolling probe sphere of 1.4 Å radius. Partial atomic charges and radii were taken from the PARSE (Sitkoff et al. 1994) parameter set, which was originally optimized for proteins by fitting the solvation free energies of amino acid analogs.

Estimation of the Odds of Adverse Health Outcome Associated with Specific *HLA-DPB1* Haplotypes in Beryllium Workers

It was suggested that susceptibility to CBD conferred by different *HLA-DPB1*E69* haplotypes is not equal. In Be-exposed workers inheritance of certain *HLA-DPB1*E69* haplotypes might convey greater susceptibility than others (Wang et al. 1999). Initially, we examined the data they reported and attempted to deduce allele-specific risk estimates (McCanlies et al. 2003; Tinkle et al. 2003). Because the number of cases was small ($n = 20$), we further pooled these data with data from several more-recent studies (Rossmann et al. 2002; Saltini et al. 2001; Wang et al. 2001). A simple allelic hierarchy was developed based on the proportional allelic frequencies reported for CBD, Be-sensitized, and controls. Odds ratios (ORs) were calculated using the Mantel-Haenzel estimate (SAS Institute, Inc. 1999) of the common relative risk for each allele (*HLA-DPB1*0201*, **0401*, **0601*, **0901*, **1001*, **1301*, **1601*, **1701*, and **1901*) by analyzing each study population individually and by pooling data from all studies.

Results

In this study we investigated a putative link between electrostatic properties of HLA-DP allotypes and corresponding ORs

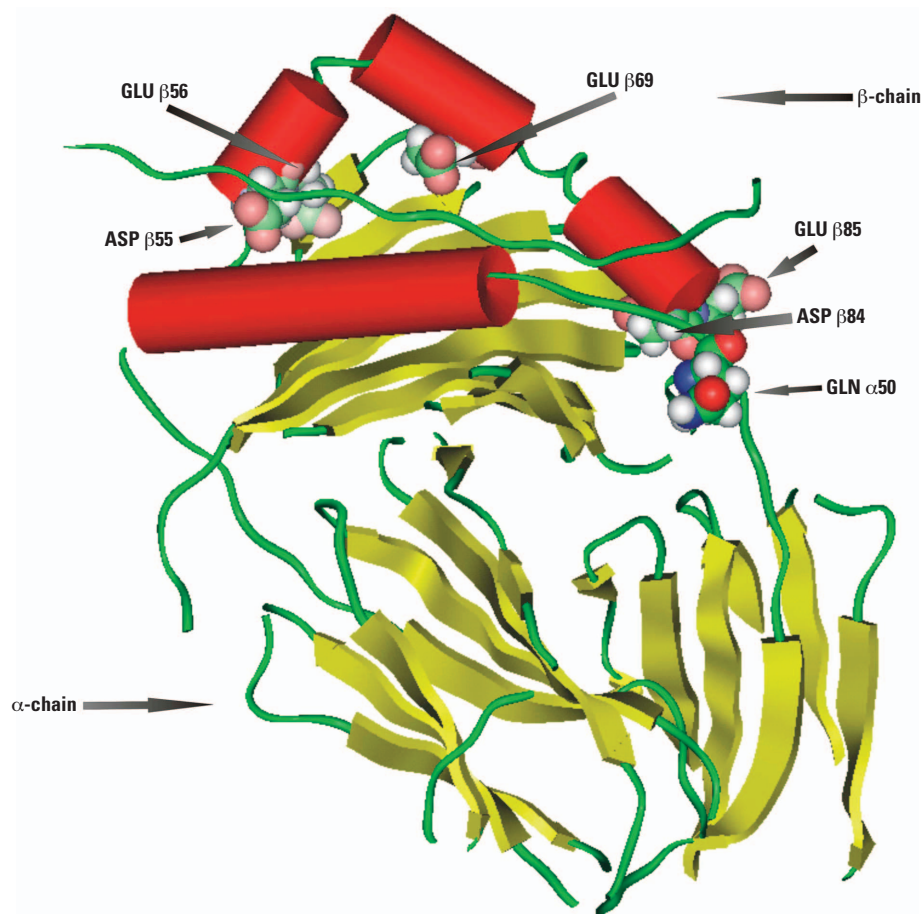


Figure 1. Class II MHC antigen-binding pocket. Model shown is for the *HLA-DPA1*01031/B1*1701* genotype.

of epidemiologically observed susceptibility to CBD. The molecular electrostatic potential (MEP) represents the electrostatic properties of a molecule, quantum-mechanical effects notwithstanding. Stretching around the molecule, the MEP comprehensively describes intermolecular electrostatic interactions, which often have a significant impact on ligand binding.

The electrostatic potential around the extracellular part of the HLA-DP protein was calculated using computer-generated homology models of HLA-DP allotypes. The calculations were performed in the absence of antigenic peptides, which for HLA-DP are not yet known. Further, these calculations did not take into account the phospholipid membrane responsible for anchoring the protein. Because the antigen-binding groove and the transmembrane domain of class II MHC are located a relatively large distance apart (approximately 60 Å) at the opposite ends of the extracellular part of the complex, the effect of the membrane on the electrostatic potential in the vicinity of the binding groove was assumed to be similar in different HLA-DP allotypes. Thus, the present analysis focuses on the distinctions in electrostatic potential on different HLA-DP allotypes.

The homology models of HLA-DP allotypes were generated from the X-ray coordinate set of the HLA-DR protein, Brookhaven code 1FV1. The amino acid sequence alignments between the corresponding chains of 1FV1 and HLA-DP are shown in Figure 2. The sequence alignment yielded approximately 64% identity in a 181 amino acid overlap between 1FV1A and the HLA-DPA1 sequences, and 65% identity in a 190 amino acid residue overlap between 1FV1B and the HLA-DPB1 sequences. There was a single two-residue gap in the alignment of β -chains, beginning at position 24, and there were no gaps at all in the alignment of the α -chains. Overall, the results of sequence analysis indicate a high homology between the three-dimensional structure of 1FV1 and HLA-DP. Usually, the high structural homology between two protein species implies an unequivocal reconstruction of unknown species from the coordinates of a known template.

Further validation of the derived structural models was conducted using the WHATIF program (Vriend 1990), and the coordinates of homology models were subjected to a number of quality control tests. To predict the probabilistic likelihood for the particular rotamer of a given SC in the model, the distribution of the χ_1 torsion angles of the model was compared with a

distribution of rotamers in the WHATIF database. Scores between 0 and 1 were computed, in which a value close to 1 implies high likelihood for that rotamer. A histogram of the scores collected for all residues in both the α - and β -chains is presented in Figure 3. In general, for most

crystal structures subjected to this test, less than 10% of residues have scores lower than 0.4. Only three residues in the α -chain scored below 0.4, and there were no scores in any of the chains lower than 0.3. These results agree with expectations arising from a comprehensive analysis of

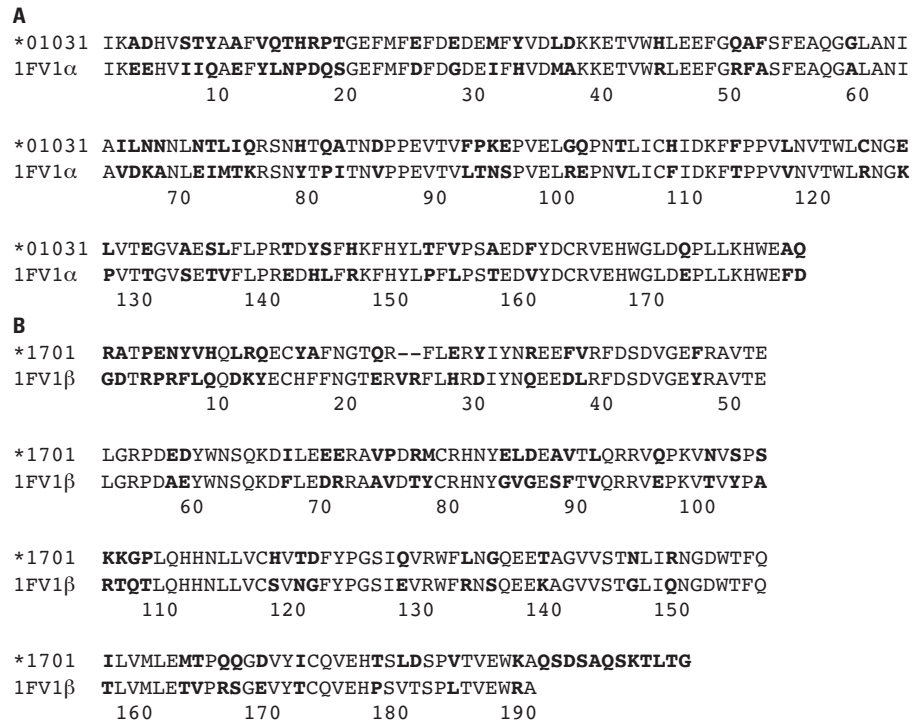


Figure 2. Sequence alignment of (A) HLA-DPA1*0103 with α -chain of HLA-DR2 (PDB: 1FV1A) and (B) of HLA-DPB1*1701 with β -chain of HLA-DR2 (PDB: 1FV1B). Residues in bold indicate mismatches.

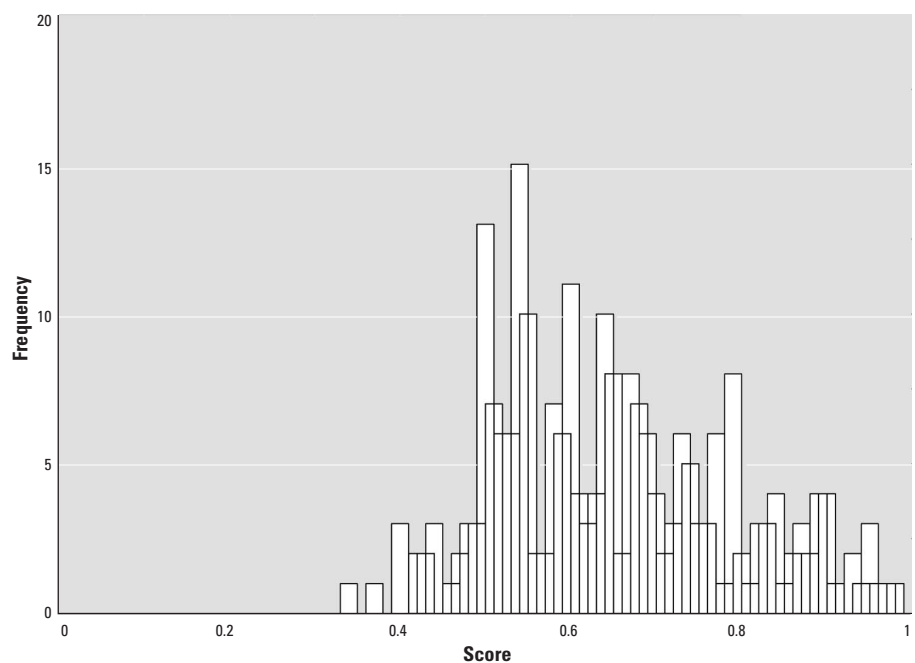


Figure 3. Histogram of WHATIF scores for rotamer check of α - and β -chains of HLA-DPA1*0103/B1*1701 model. Bin = 0.01

are reported in columns 6 and 7, respectively. The highest estimates of ORs for CBD were found consistently in β -chain alleles coding for isotypes that carry the greatest negative charge. Conversely, the lowest ORs for CBD were associated with alleles coding for the least negatively charged HLA-DPB1*0401 (K69) isotype. HLA-DPB1*1901 and *0201 and *1301 carry intermediate negative charge, and they also were associated with intermediate ORs for CBD. Overall, there seems to be an obvious link between the amount of negative charge on the β -chain and corresponding ORs for CBD.

The highest ORs for BeS were also found in β -chain alleles that code for isotypes carrying the greatest negative charge. Comparison of these ORs with ORs associated with less negatively charged isotypes also indicates a likely possibility of connection between the charge and ORs. However, in the case of BeS, the picture is masked by the *HLA-DPB1*1901* allele, whose OR disrupts the otherwise regular rank order in column 7. At present we do not have a comprehensive explanation for this observation, except that it may be the result of a small number of observations. The epidemiologic basis for the calculated *1901 OR in BeS is one reported case; this is reflected in large, overlapping confidence intervals (CIs) calculated for this allele. In addition, the deviation may be caused by interference of unknown α -chains (see below), which have not been reported in the source studies.

It is evident from the table that the ORs have an approximately log-linear relationship to the magnitude of negative charge on the β -chain of HLA-DP. Figure 5 shows fits of ungrouped log-ORs using the log-linear regression. The variance-covariance matrix analysis suggests that log-ORs for both CBD and BeS are reasonably well correlated with the charge. The correlation coefficients are -0.85 and -0.67 , respectively. As the data are naturally stratified by charge, we further broke the matrix into lack-of-fit and pure-error terms. The lack-of-fit term represents the deviation of fitted values from group means, i.e., it characterizes the quality of the fit. The pure-error term specifies a scatter of the data around the means, which is the statistical noise that interferes with the regression. The lack-of-fit test indicated a statistically representative fitting with log-linear regression of both the CBD and BeS data. The calculated test-statistic numbers $F_{2,5}$ were 0.16 and 1.04, respectively, indicating that the null hypothesis for a poor fit could not be accepted even at the 60% level. A fairly large scatter of the data

within the groups, which is seen in Figure 5, is due to the limited data available for individual alleles. The coefficients of determination, which measure the random scatter, were 0.71 and 0.45 for the CBD and BeS regressions, respectively. Despite this, both regressions were statistically significant according to the standard test for the zero slope of regression line ($F_{1,7}$ are 17.51 and 5.68, respectively). Thus, we conclude that the analyzed epidemiologic association data support the hypothesis of an association between the charge on an allele and observed ORs for both CBD and BeS.

To more effectively analyze how the charge distribution varies among HLA-DP proteins, we calculated the electrostatic potential on the solvent-accessible surface of each protein. Figure 6 illustrates the locations of the three regions, which according to Table 1 determine the variation of charge on the β -chain. Each of the three regions is located in proximity to the peptide-binding groove. Figure 6A and B compare the electrostatic potential at the solvent-accessible surface of HLA-DP allotypes involving the least and one of the most negatively charged β -chain alleles. They are HLA-DPA1*0103/B1*0401 and HLA-DPA1*0103/B1*1701, respectively.

These maps clearly show intensification of negative potential in the binding-groove region of the protein encoded by *1701 allele compared with that encoded by *0401. In addition to the solvent-accessible potential surface maps, which show how the potential varies along the surface drafted by the centers of the rolling probe sphere (e.g., the ion), it is also useful to analyze the MEP on the protein, which is given by the isopotential surface maps. Figure 7 illustrates the MEP at a contour level of -2 kT/e (red) and $+2$ kT/e (blue) for HLA-DPA1*0103/B1*0401, *0201, *1301, and *1701, respectively. The MEPs on HLA-DPA1*0103/B1*1301, *1901 and *1701 are compared in Figure 8, in which the view is rotated by 90° to analyze the effect of the substitution in position $\beta 56$. Variations of MEP in other parts of the protein are fairly minor, as the substitutions of charged residue are confined to the binding groove only.

Comparison of MEPs in Figures 6–8 shows how the potential surface is altered by the amino acid substitutions, and hence, the charge in the regions $\beta 55$ – $\beta 56$, $\beta 69$, and $\beta 84$ – $\beta 85$. In the case of the *0401 protein (Figure 7A), in which the β -chain does not carry any negatively charged residues in positions $\beta 55$, $\beta 56$, $\beta 84$, and

Table 1. Total charge of the β -chain encoded by HLA-DPB1 alleles and ORs based on grouping data by charge.

<i>HLA-DPB1</i>	Total charge on β -chain ^a	$\beta 55, \beta 56$	$\beta 69$	$\beta 84, \beta 85$	CBD OR ^b (95% CI)	BeS OR ^c (95% CI)
*1701		D E	E	D E		
*1601		D E	E	D E		
*1001	-9	D E	E	D E	6.5 (3.5–11.9)	5.3 (3.0–9.3)
*0901		D E	E	D E		
*0601		D E	E	D E		
*1901	-8	E A	E	D E	4.2 (0.9–19.0)	1.2 (0.1–10.5)
*1301		A A	E	D E		
*0201	-7	D E	E	G G	2.1 (1.3–3.3)	2.2 (1.5–3.4)
*0401	-3	A A	K	G G	0.5 (0.3–0.9)	0.7 (0.4–1.1)

CI, confidence interval.

^aThe charge on each allotype was determined under an assumption of standard pK_a values for all ionizable residues. It implies that at the physiological pH, the residues adopt fully ionized states, i.e., aspartate and glutamate each carry a charge of $-1e$, and arginine and lysine carry a charge of $+1e$. Histidine and cysteine residues were assumed to be neutral. ^bORs calculated from pooled data reported by Rossman et al. (2002), Saltini et al. (2001), and Wang et al. (1999, 2001).

^cCould not be deduced from Wang et al. (1999, 2001).

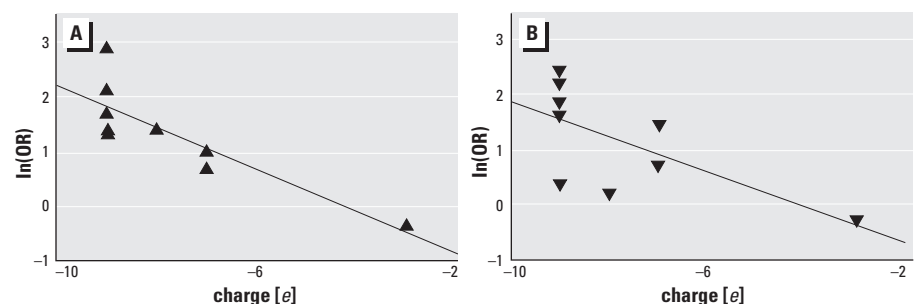


Figure 5. Statistical odds of (A) conferring CBD and (B) BeS versus formal charge on the β -chain of HLA allotypes.

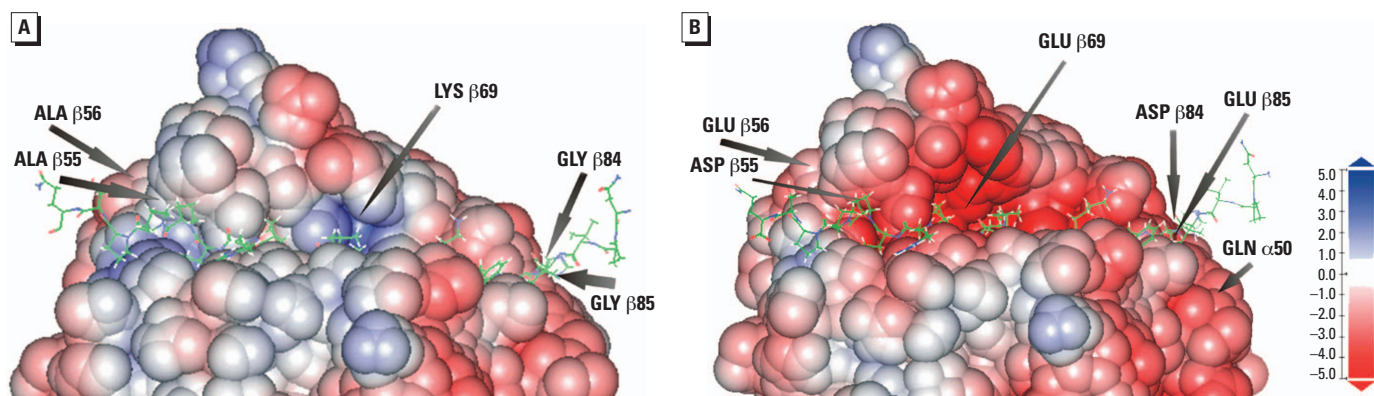


Figure 6. Electrostatic potential surface maps for the binding groove. (A) HLA-DPA1*0103/B1*0401. (B) HLA-DPA1*0103/B1*1701. The scale indicates color-coded values of the electrostatic potential (kT/e). The surface is a solvent-accessible surface generated as described in the text. The wire frame denotes a putative location of the antigen as it is given by the 1FV1 template.

β85, there is virtually no appearance of negative MEP in the peptide-binding groove region. Instead, the central part of the groove is occupied by a stretch of positive MEP, which is due to a positively charged Lys β69. Figure 7B illustrates how substitutions for negatively charged residues in positions β55, β56, and β69 induce negative MEP in the binding groove of the *0201 protein. Similarly, Figure 7C shows the emergence of negative MEP resulting from substitutions for negative residues in the positions β69, β84, and β85 of the *1301 protein. Comparison of Figure 7B and C indicates how much Glu β69 contributes to the negative MEP on allotypes involving the *0201 and *1301 alleles. Figure 7D demonstrates a situation in which negatively charged residues are substituted for all residues constituting the three genetic marker regions. When Figure 7B–D is compared, we can see that the substitutions in the three regions result in a roughly additive increase of the surface of negative MEP in and around the groove. In the future, in-depth quantitative analysis will be applied to determine the magnitude of negative MEP inside the groove. However, the shape of negative MEP around Glu β69 in Figure 7D is apparently enlarged compared with Figure 7B and C, probably originating from the increased negativity of MEP inside the groove. If this is the case, it may partially explain the link between charge and ORs reported in Table 1 and Figure 5.

The effects of replacing Ala β55 in the *1301 protein with Glu β55 in the *1901 protein and replacing both Ala β55 and Ala β56 with negatively charged residues in the *1701 protein are illustrated in Figure 8. Similar to Figure 7, substitution for charged residues results in a corresponding appearance of increasingly more negative MEP. All studied HLA-DP β-chain proteins contain either an Asp or

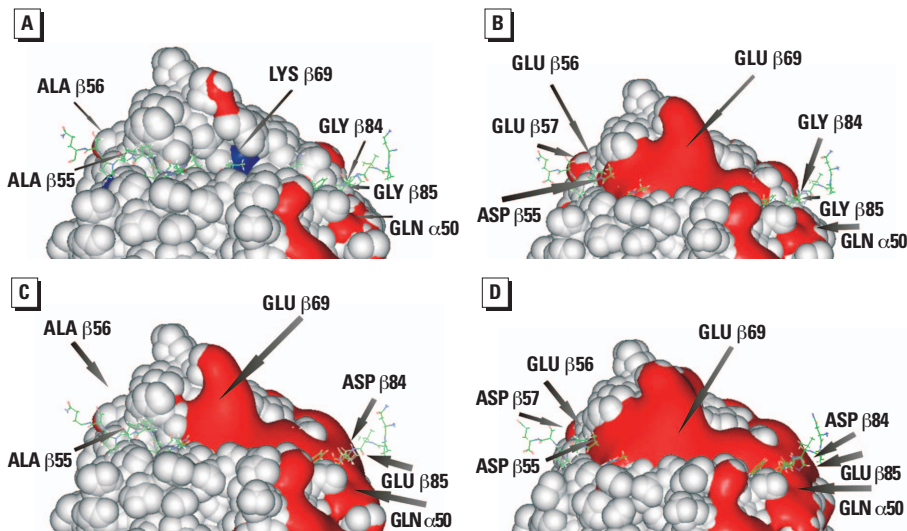


Figure 7. Isopotential surface maps for the binding groove region. (A) HLA-DPA1*0103/B1*0401. (B) *0201. (C) *1301. (D) *1701. Red and blue represent contours at -2 and $+2$ kT/e, respectively. The isopotential surface map is superimposed on the solvent-accessible surface (shown in white), so that only a part of the isopotential surface that lies on or above the solvent-accessible surface is visible. The wire frame denotes a putative location of the antigen as it is given by the 1FV1 template.

Glu residue in the position β57, which itself influences the shape and magnitude of MEP in this region. For example, there is a Glu in position β57 in the *0201 protein, whereas the *1701 protein has an Asp in this position. Evidently, the presence of Glu or Asp in this position affects the appearance of the negative MEP around the region of β56, β57, as can be seen by examining Figure 7B and D (or Figure 9A and B, described below).

The total charge on the α-chain encoded by *HLA-DPA1*0201* is -17 , and it is -18 on *HLA-DPA1*0103*. The replacement of Gln50 in the α-chain encoded by *HLA-DPA1*0103* with Arg50 encoded by *HLA-DPA1*0201* imparts one additional unit of positive charge. The MEP on two HLA-DP allotypes involving the *0201 allele of the α-chain is shown in Figure 9. The figure represents homology models of

HLA-DPA1*0201/HLA-DPB1*1701 and HLA-DPA1*0201/HLA-DPB1*0201. These should be compared with Figures 7B and 7D, which are for HLA-DPA1*0103/HLA-DPB1*1701 and HLA-DPA1*0103/HLA-DPB1*0201, respectively. Comparison of these two pairs shows that the effect of adding one additional unit of positive charge on the α-chain can be deduced in the absence (Figures 7B and 9A) and presence (Figures 7D and 9B) of negative charge in the β84–β85 region of the β-chain. The Q50R substitution in the α-chain causes a profound effect on the MEP in the immediate vicinity of α50. However, it is not clear how much this substitution affects the MEP inside the groove. Conversely, unlike β69, this residue is located at the very edge of the peptide-binding groove, and thus its effect on the binding may be fairly small.

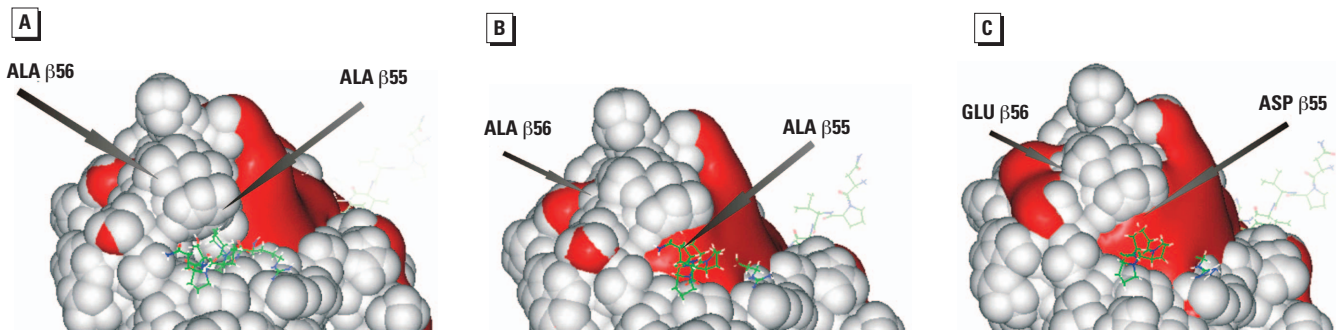


Figure 8. Isopotential surface maps for the binding groove region. (A) HLA-DPA1*0103/B1*1301. (B) *1901. (C) *1701. Red and blue represent contours at -2 and $+2$ kT/e , respectively. The solvent-accessible surface is displayed in white. The wire frame denotes a putative location of the antigen as it is given by the 1FV1 template.

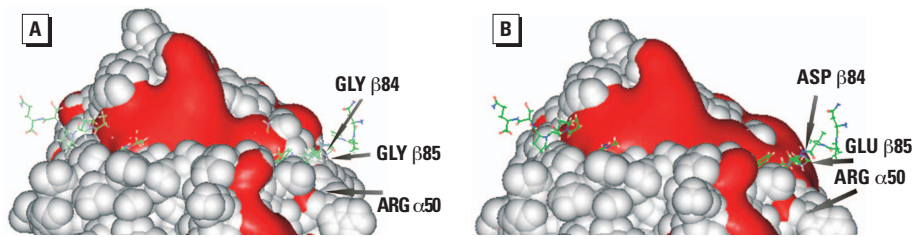


Figure 9. Isopotential surface maps for the binding groove region. (A) HLA-DPA1*0201/B1*0201. (B) HLA-DPA1*0201/B1*1701. Red and blue represent contours at -2 and $+2$ kT/e , respectively. The solvent-accessible surface is shown in white. The wire frame denotes a putative location of the antigen as it is given by the 1FV1 template.

Alternatively, the other two important markers of the β -chain, $\beta 55$ – $\beta 56$ and $\beta 84$ – $\beta 85$, are similarly distant from the center of the groove as $\alpha 50$. From Figures 8 and 9, we already know that the effect of substituting different residues in one particular region can, to some extent, alter MEP in an adjacent region. Additional epidemiologic studies may help to clarify the role of α -chain substitutions in the etiology of CBD. From a structural point of view we do not see obstacles to interference with binding from yet unknown substitutions in the α -chain. Alternatively, if such substitutions indeed do not affect ligand binding, additional computational investigations are needed to explain the physiologic differences between substitutions in the α - and β -chains.

Discussion

Occupational or environmental exposures to metals may cause severe health disorders related to modulation of immune homeostasis. Metal immunomodulation has been implicated in chronic inflammatory processes, autoimmune diseases, and related adverse effects (Cunningham-Rundles et al. 2000; Lawrence and McCabe 2002). Molecular mechanisms of immunological actions of metals are largely unknown. In this work we explored a possible link between molecular properties of genetic products conferring susceptibility to Be and the health effects of Be exposures. The

results of this work are useful for interpreting the molecular recognition in MHC class II proteins and for investigating their interactions with Be^{2+} . Previous studies have suggested Glu $\beta 69$ as an important genetic marker for conferring susceptibility to CBD (Díaz et al. 1998; Fontenot et al. 2000; Lombardi et al. 2001; Potolicchio et al. 1999; Richeldi et al. 1993, 1997; Rossman et al. 2002; Saltini et al. 2001; Wang et al. 1999, 2001). More recent studies have led some investigators to suggest that the charged residues Asp $\beta 55$ and Glu $\beta 56$ might also contribute to the recognition of HLA-DP by T cells (Díaz et al. 1998; Fontenot et al. 2000; Potolicchio et al. 1999). In a study of the binding of cobalt to HLA-DP, Potolicchio et al. (1999) compared the binding affinity for cobalt by HLA-DPB1*0201 (which has Asp $\beta 55$, Glu $\beta 56$, and Glu $\beta 69$) and by HLA-DPB1*0402 (which has Asp $\beta 55$, Glu $\beta 56$, and Lys $\beta 69$), and also by HLA-DPB1*0401 (which has Ala $\beta 55$, Ala $\beta 56$, and Lys $\beta 69$). They found that the binding affinity for radioactive $^{57}Co^{2+}$ decreased in the order $HLA-DPB1*0201 > HLA-DPB1*0402 > HLA-DPB1*0401$, confirming earlier evidence for involvement of Glu $\beta 69$ but also suggesting that positions $\beta 55$ and $\beta 56$ may also be involved in the interaction. A similar study with $HLA-DPB1*0101$ and $HLA-DPB1*0401$, which both carry Ala $\beta 55$, Ala $\beta 56$, and Lys $\beta 69$, failed to present Be^{2+} to $CD4^+$ T cells,

whereas $HLA-DPB1*0202$ and other alleles with Glu $\beta 55$, Asp $\beta 56$, and Glu $\beta 69$ were positive for presentation of Be^{2+} to T cells (Fontenot et al. 2000).

In this study the electrostatic potential on model proteins encoded by several $HLA-DPA1$ and $HLA-DPB1$ alleles was analyzed. The genetic polymorphisms in different alleles are responsible for substitutions of charged residues (Glu, Asp, Arg, Lys) in positions 55–56, 69, and 84–85 of the amino acid sequence of the β -chain (Figure 1). We found a clear correlation between the total charge on protein variants and epidemiologic odds ratios conferring susceptibility to either BeS or CBD. The MEP contours in Figures 7 and 8 illustrate the distribution of charge in the three significant regions in proximity to the binding groove. Hence, $HLA-DPA1*0103/B1*1701$, which carries the most negative charge, also appears to confer the greatest susceptibility for BeS and CBD. We appreciate that in all cases of $HLA-DPB1$ alleles coding for glutamic acid in position 69, the 95% confidence intervals overlap. This stems from the lack of sufficient power of the studies, both independently and together, to answer the question of allele-specific risk hierarchy. However, given the consistency of the different studies, the data strongly suggest that such a hierarchy exists.

Originally, we examined data reported by Wang et al. (1999) and were able, to a limited extent, to account for homozygosity. The analyses presented here do not account for the impact of homozygosity versus heterozygosity. Moreover, we are unaware of the impact of any potential allele misclassification, which is suggested by the growing numbers of haplotypes reported since 1999. Regarding the ranking of alleles with respect to BeS (Table 1), we considered the possibility of bias, potentially introduced by the data reported by Saltini et al. (2001), as, unlike those of Wang et al. (2001) and Rossman et al. (2002), these data did not show an association between inheritance of

*HLA-DPB1*E69* and BeS. However, elimination of the BeS data reported by Saltini et al. (2001) from our analyses did not change the overall ranking.

All of the reports described were case-control studies, and we remain ignorant of many facets of the natural history of CBD, especially as it pertains to the progression from BeS to disease. In addition, diagnosis of BeS remains problematic. It may be that a relatively high OR associated with CBD but a relatively low allele-specific OR associated with BeS reflects a greater propensity for progression from BeS to CBD (e.g., as may be the case for *HLA-DPB1*1001*).

As Figure 5 illustrates, there appears to be a log-linear relationship between ORs and charge on the protein. Although an improved set of data may alter the fit, it is noteworthy that such a relationship exists, as it suggests that this kind of analysis may be useful for eventually predicting disease susceptibility for new allotypes for which epidemiologic data are lacking or unavailable.

As far as the molecular mechanism of CBD is concerned, a previous study has indicated that Be^{2+} may bind in the vicinity of Glu $\beta 69$, perhaps directly in the peptide-binding groove (Amicosante et al. 2001). In this connection the log-linear dependence of the odds ratios (essentially the probability expressed in the units of background) on the charge is curious because it resembles the Boltzmann distribution in a two-site charge-charge interaction model when all other parameters are fixed. At present, we are unaware whether it is a coincidence or fact reflecting a yet unknown peculiar mode of ion binding. This puzzle may be resolved in future studies, which will shed additional light on the molecular mechanisms of metal-dependent immunomodulation.

Conclusion

Our results complement recent findings, which implicate positions $\beta 55$, $\beta 56$, $\beta 69$, $\beta 84$, and $\beta 85$ of HLA-DPB1 in susceptibility to CBD. This approach may prove useful in predicting risk associated with previously unknown alleles and may help

lead to the elucidation of mechanistic issues associated with CBD. Further studies will be directed at identifying the beryllium binding site on the HLA-DP protein.

REFERENCES

- Amicosante M, Sanarico N, Berretta F, Arroyo J, Lombardi G, Lechner R, et al. 2001. Beryllium binding to HLA-DP molecule carrying the marker of susceptibility to berylliosis glutamate $\beta 69$. *Hum Immunol* 43:686–693.
- Budinger L, Hertl M. 2000. Immunologic mechanisms in hypersensitivity reactions to metal ions: an overview. *Allergy* 55:108–115.
- Cunningham-Rundles S, Giardina PJ, Grady RW, Califano C, McKenzie P, de Sousa M. 2000. Effect of transferrin iron overload on immune response. *J Infect Dis* 182:S115–S121.
- Díaz G, Catálfamo M, Coiras MT, Álvarez AM, Jaraquemada D, Nombela C, et al. 1998. HLA-DP β residue 69 plays a crucial role in allorecognition. *Tissue Antigens* 52:27–36.
- EBI. 2003. IMGT/HLA Database. Hinxton, UK: European Molecular Biology Laboratory - European Bioinformatics Institute. Available: <http://www.ebi.ac.uk/imgt/hla/allele> [accessed 4 March 2003].
- Fontenot AP, Torres M, Marshall WH, Newman LS, Kotzin BL. 2000. Beryllium presentation to CD4⁺ T cells underlies disease-susceptibility HLA-DP alleles in chronic beryllium disease. *Proc Natl Acad Sci USA* 97:12717–12722.
- Kolanz ME. 2001. Introduction to beryllium: uses, regulatory history, and disease. *Appl Occup Environ Hyg* 16:559–567.
- Kreiss K, Mroz MM, Zhen B, Wiedemann H, Barna B. 1997. Risks of beryllium disease related to work processes at a metal, alloy, and oxide production plant. *Occup Environ Med* 54:605–612.
- Lawrence DA, McCabe MJ Jr. 2002. Immunomodulation by metals. *Int Immunopharmacol* 2:293–302.
- Li YL, Li HM, Martin R, Mariuzza RA. 2000. Structural basis for the binding of an immunodominant peptide from myelin basic protein in different registers by two HLA-DR2 proteins. *J Mol Biol* 304:177–188.
- Lombardi G, Germain C, Uren J, Fiorillo MT, du Bois RM, Jones-Williams W, et al. 2001. HLA-DP allele-specific T cell responses to beryllium account for DP-associated susceptibility to chronic beryllium disease. *J Immunol* 166:3549–3555.
- Maier LA. 2001. Beryllium health effects in the era of the beryllium lymphocyte proliferation test. *Appl Occup Environ Hyg* 16:514–520.
- Marsh SGE. 2003. Nomenclature for factors of the HLA system, update March 2003. *Eur J Immunogenet* 30:239.
- McCanlies E, Kreiss K, Weston A. 2003. HLA-DPB1 and chronic beryllium disease: a HuGE review. *Am J Epidemiol* 157:386–398.
- OSHA. 2002. Preventing Adverse Effects from Exposure to Beryllium in Dental Laboratories. HIB 02-04-19 (rev. 05-14-02). Washington, DC:U.S. Department of Labor Occupational Safety and Health Administration.
- Potolicchio I, Festucci A, Hausler P, Sorrentino R. 1999. HLA-DP molecules bind cobalt: a possible explanation for the genetic association with hard metal disease. *Eur J Immunol* 29:2140–2147.
- Powell MJD. 1977. Restart procedures for the conjugate gradient method. *Math Progr* 12:241–254.
- Powers MB. 1991. History of beryllium. In: *Beryllium: Biomedical and Environmental Aspects* (Rossman MD, Preuss PO, Powers MB, eds). Baltimore, MD:Williams and Wilkins.
- Richeldi L, Kreiss K, Mroz MM, Zhen BG, Tartoni P, Saltini C. 1997. Interaction of genetic and exposure markers in the prevalence of berylliosis. *Am J Ind Med* 32:337–340.
- Richeldi L, Sorrentino R, Saltini C. 1993. HLA-DPB1 glutamate 69: a genetic marker of beryllium disease. *Science* 262:242–244.
- Rossmann MD, Stubbs J, Lee CW, Argyris E, Magira E, Monos D. 2002. Human leukocyte antigen Class II amino acid epitopes: susceptibility and progression markers for beryllium hypersensitivity. *Am J Respir Crit Care Med* 165:788–794.
- Saltini C, Richeldi L, Losi M, Amicosante M, Voorter C, van den Berg-Loonen E, et al. 2001. Major histocompatibility locus genetic markers of beryllium sensitization and disease. *Eur Respir J* 18:677–684.
- Saltini C, Winestock K, Kirby M, Pinkston P, Crystal RG. 1989. Maintenance of alveolitis in patients with chronic beryllium disease by beryllium-specific helper T cells. *N Engl J Med* 320:1103–1109.
- Sanderson WT, Henneberger PK, Martyny J, Ellis K, Mroz MM, Newman LS. 1999. Beryllium contamination inside vehicles of machine shop workers. *Appl Occup Environ Hyg* 14:223–230.
- SAS Institute, Inc. 1999. *User's Guide. Statistics, Version 7-1, Vol 4*. Cary, NC:SAS Institute, Inc.
- Sitkoff D, Sharp KA, Honig B. 1994. Accurate calculation of hydration free energies using macroscopic solvent models. *J Phys Chem* 98:1978–1988.
- Tinkle SS, Weston A, Flint MS. 2003. Genetic factors modify the risk of developing beryllium disease. *Semin Respir Crit Care Med* 24:169–177.
- Vriend G. 1990. WHATIF: a molecular modeling and drug design program. *J Mol Graph* 8:52–56.
- Wang Z, Farris GM, Newman LS, Shou Y, Maier LA, Smith HN, et al. 2001. Beryllium sensitivity is linked to HLA-DP genotype. *Toxicology* 165:27–38.
- Wang Z, White PS, Petrovic M, Tatum OL, Newman LS, Maier LA, et al. 1999. Differential susceptibilities to chronic beryllium disease contributed by different Glu69 HLA-DPB1 and -DPA1 alleles. *J Immunol* 163:1647–1653.
- Weiner SJ, Kollman PA, Case DA, Singh UC, Ghio C, Alagona S, et al. 1984. A new force-field for molecular mechanical simulation of nucleic-acids and proteins. *J Am Chem Soc* 106:765–784.