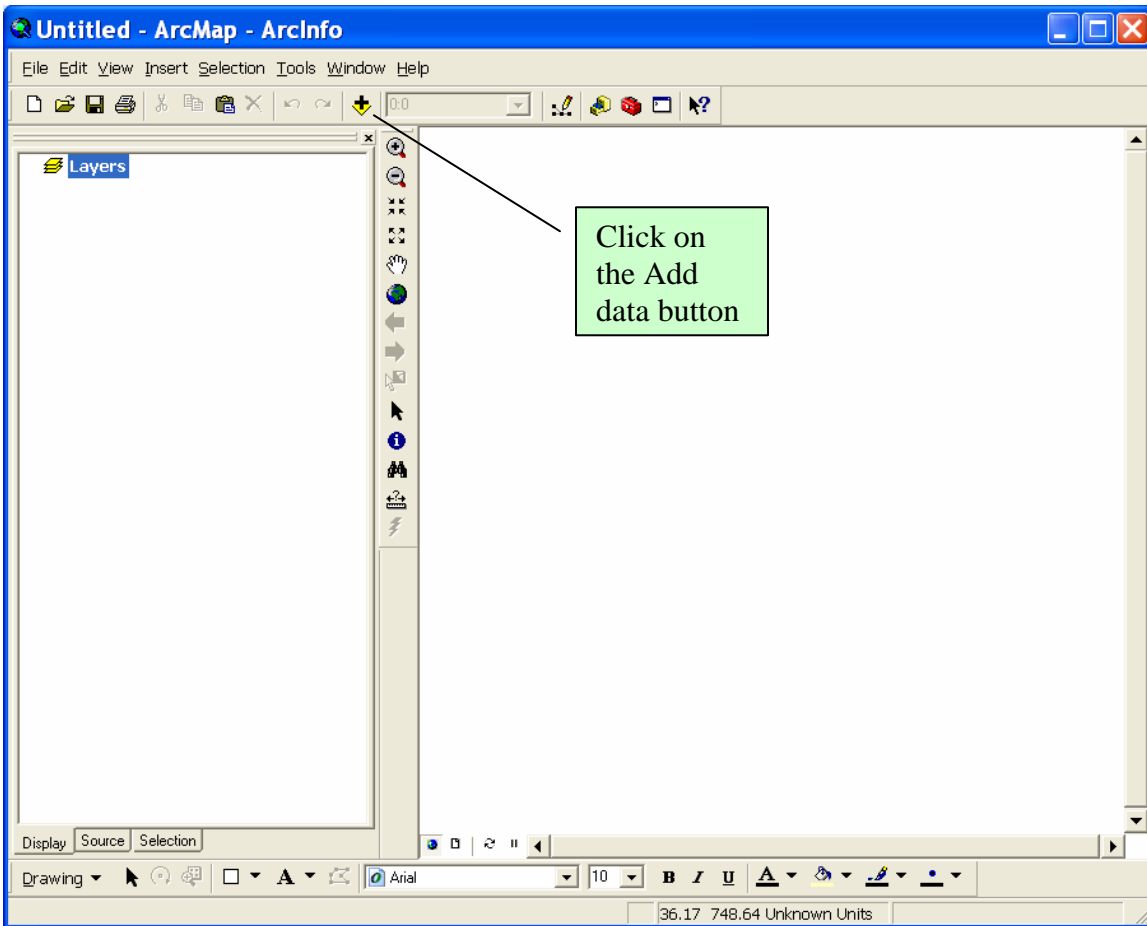
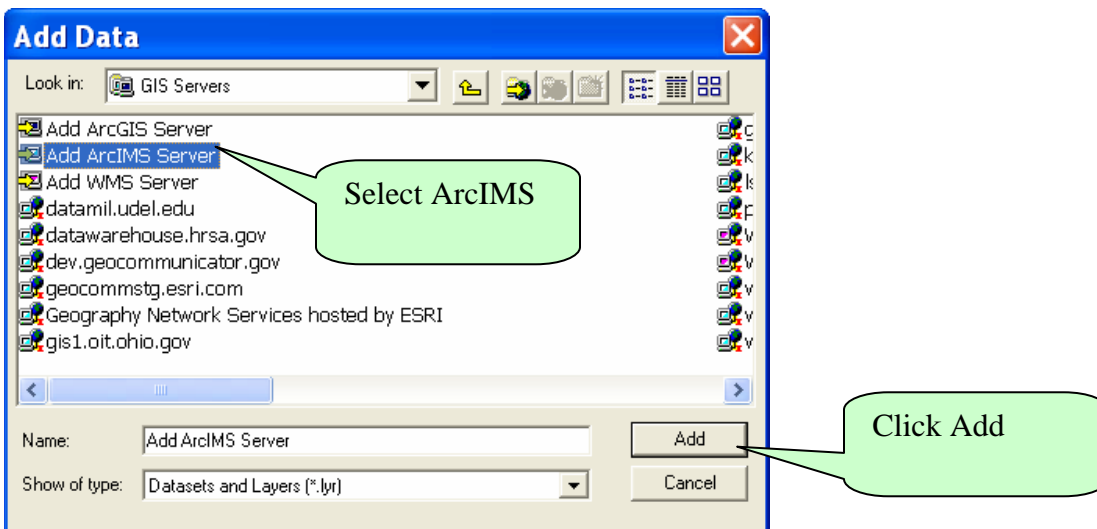


Using BLM ArcIMS and WMS map services within your ArcGIS.

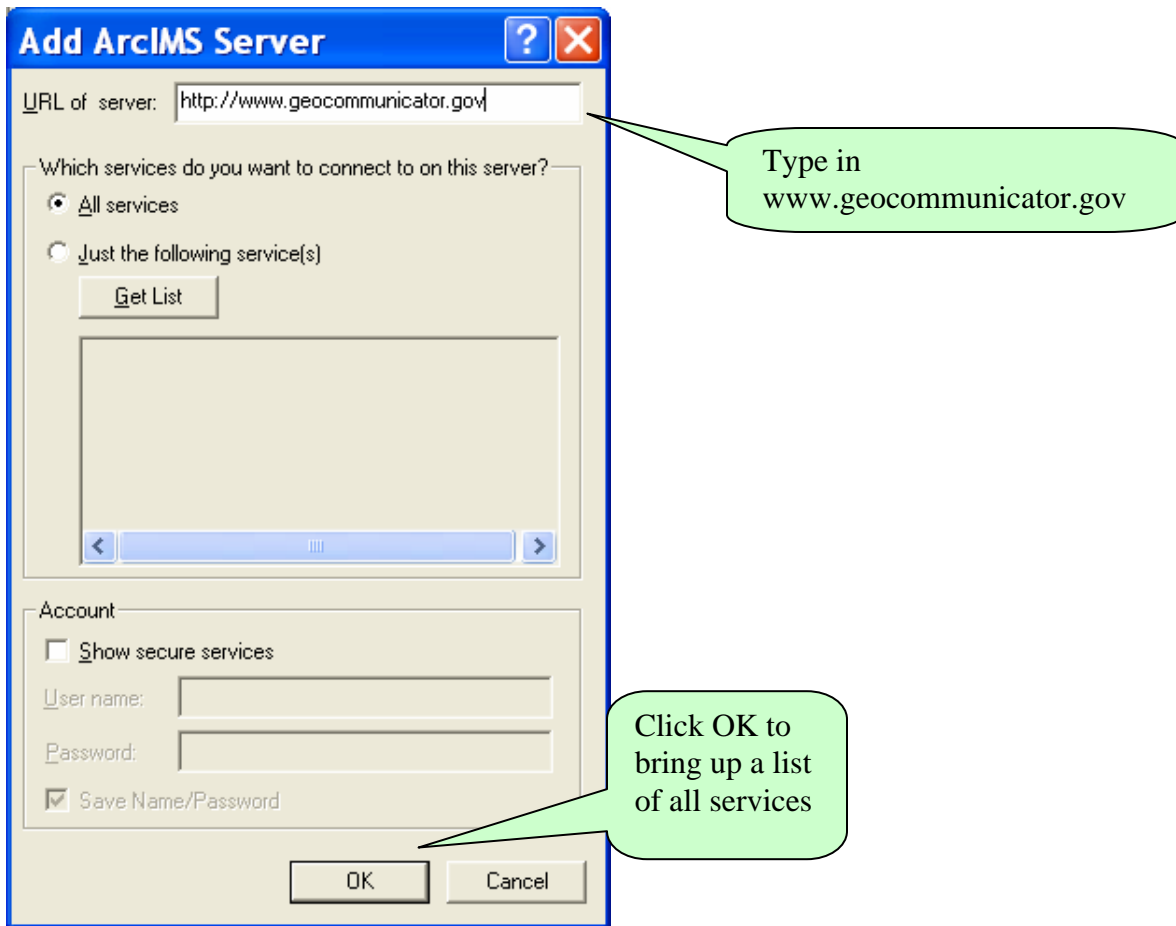
1-Bring up ArcMap



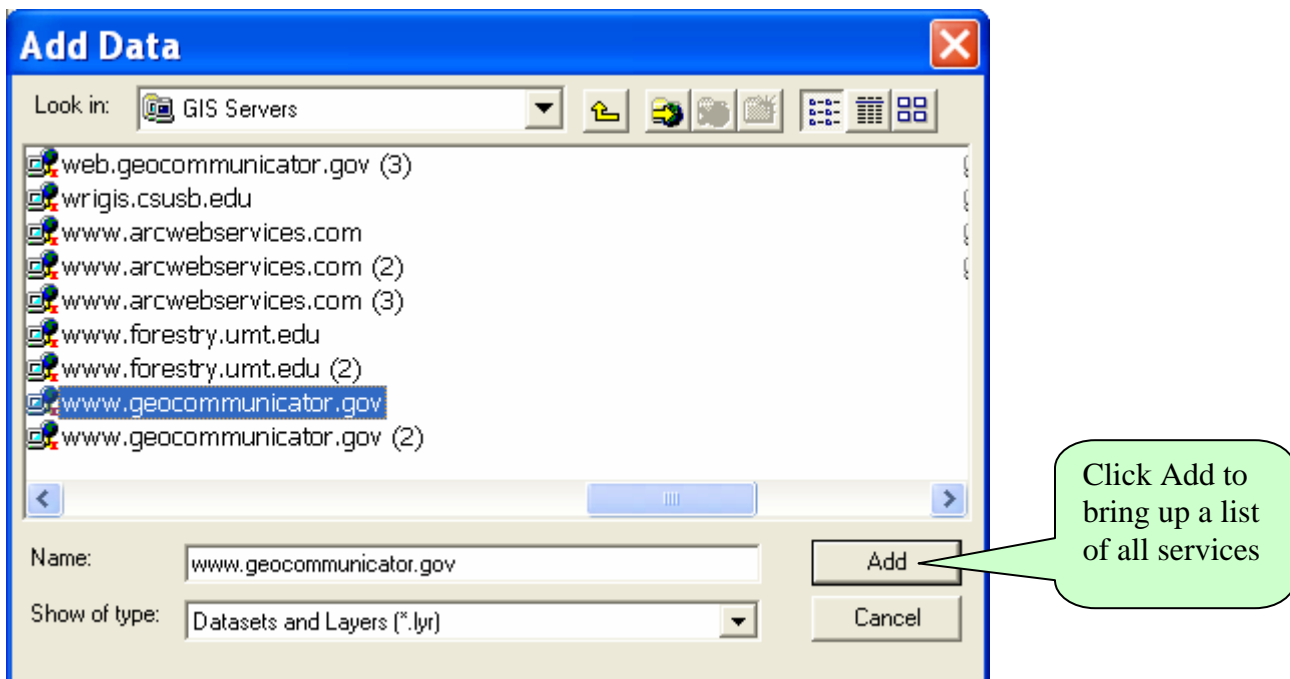
2-Add data



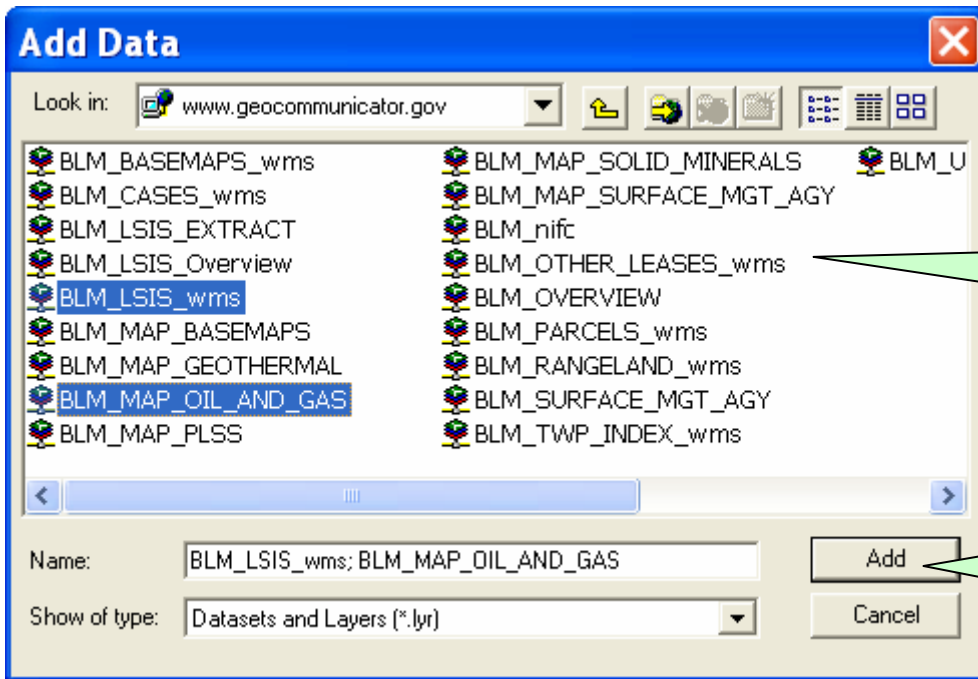
3-Add www.geocommunicator.gov as the URL



4-Find web.geocommunicator.gov from the list of services, select Add.



5-Below is a list of the available Map Services. For definitions of the map services see “Data Themes and Layers – Public” below.



Control click to select more than one map services

Click Add to bring in the map services

Data Themes and Layers - Public

The following data themes are maintained in the National Integrated Land System (NILS) through the Survey Management (SM), Measurement Management (MM) or the Parcel Management (PM) transaction modules. The data from NILS is made available to the public for access and downloading through NILS' GeoCommunicator (www.geocommunicator.gov). Many of the themes are also available as Map Image Services that can be accessed through GIS software.

NILS' GeoCommunicator – www.geocommunicator.gov

Data available as a map service, downloadable data, and/or in a mapping application

<p>PLSS (Public Land Survey System)</p> <p>Map service: www.geocommunicator.gov Service Name: BLM_MAP_PLSS BLM_LSYS_wms</p> <p>Downloadable from Land Survey Information Section</p>	<p>Graphic representation of PLSS including Meridians, Township, Range, Sections, subdivisions, and special surveys (not fully populated) providing the foundation for a multipurpose cadastre. Includes BLM's GCDB data and alternate source data from other agencies including the USFS and the Risk Management Agency (RMA). This data layer contains both surveyed and unsurveyed data.</p> <p>Progress has been made to fill in most of the missing PLSS data with additional alternate source data.</p>
<p>Land & Mineral Use Record Data (pending, active, and closed cases)</p> <p>Access to Serial Register Page and Township Geographic Reports from LR2000. Access to BLM State online Master title plats.</p> <p>Map service: www.geocommunicator.gov Service Name: BLM_MAP_GEOTHERMAL</p> <ul style="list-style-type: none"> • Geothermal Leases & Agreements <p>BLM_MAP_MINING_CLAIMS</p> <ul style="list-style-type: none"> • Mining Claims <p>BLM_MAP_OIL_AND_GAS</p> <ul style="list-style-type: none"> • Oil & Gas Leases & Agreements 	<p>Stipulations - For CO, MT, NM, CA, OR, and WA.</p> <p>BLM_MAP_SOLID_MINERALS</p> <ul style="list-style-type: none"> • Coal Leases • Logical Mining Units (coal) • Known Leasing Areas • Other Solid Mineral Leases, Permits, and Licenses <p>BLM_Other_Lease_wms</p> <ul style="list-style-type: none"> • Mineral Materials Disposal • Non-mineral Uses, Leases and Permits • Oil & Gas Sale Parcels for CO, WY, and NM. Access to State Office sale website and sale notice. <p>• Rights-of-Way</p> <p>BLM_PARCELS_wms</p> <ul style="list-style-type: none"> • All parcel cases <p>BLM_SUBSURFACE</p> <ul style="list-style-type: none"> • BLM subsurface mineral estate for WY and NM. More will be added as they become available.
<p>Cases that Affect Land Status (CTALS)</p> <p>Access to Serial Register Page and Township Geographic Reports from LR2000.</p> <p>Map service: www.geocommunicator.gov Service Name: BLM_CASES_wms</p>	<ul style="list-style-type: none"> • Acquisitions • Corrective Actions (e.g. Deeds, Transfer Jurisdiction) • Designated Areas • Exchanges • Grants (e.g. State Grants) • Land Disposals (e.g. Homestead & Desert Land Entry) • Land Sales • Mineral Patents • Pending Exchanges • Public Law 167 • Withdrawals & Classifications
<p>Range Allotments</p>	<ul style="list-style-type: none"> • Allotment boundaries

<p>Map service: www.geocommunicator.gov Service Name: BLM_RANGELAND_wms</p>	<ul style="list-style-type: none"> • Pasture boundaries <p>Access to the Allotment Master and Allotment Use Report from the Range Authorization System (RAS).</p>
<p>Site Mapper – Sites</p> <p>Map service: web.geocommunicator.gov Service Name: BLM_SITES</p>	<ul style="list-style-type: none"> • BLM Abandoned Mines includes information from PRIS • Abandoned Mines from other agencies: State of California, EPA, MSHA, OSM, USFS, USGS • Administration Sites - includes information from FAMS • Buildings - includes information from FAMS • Campgrounds - includes information from FAMS • Recreation Sites - includes information from FAMS • Impaired Watersheds • Section 303 Listed Waters
<p>Healthy Lands</p> <p>This viewer is in development and will include more environmental layers in the future.</p>	<ul style="list-style-type: none"> • Administration Sites - includes information from FAMS • Buildings - includes information from FAMS • Campgrounds - includes information from FAMS • Recreation Sites - includes information from FAMS • Range Allotments • Watersheds • Reference and base maps
<p><i>NILS' GeoCommunicator – www.geocommunicator.gov BLM Data Themes</i></p>	
<p>Surface Management Agency</p> <p>Map service: www.geocommunicator.gov Map Name: BLM_MAP_SURFACE_MGT_AGY</p>	<p>Boundaries of all federal surface management agencies in the U.S.</p>
<p>BLM Admin. Boundaries</p> <p>Map service: www.geocommunicator.gov Service Name: BLM_MAP_BASEMAPS</p>	<p>BLM Administrative Boundaries</p>
<p>EPCA Basin Study Data Themes</p>	<ul style="list-style-type: none"> • Gas Density • Liquid Density • Oil & Gas Basin Study Areas
<p><i>NILS' GeoCommunicator – www.geocommunicator.gov Additional Reference Themes</i></p>	
<p>GeoCommunicator provides reference themes streamed from other Data Providers for viewing with BLM data sets</p> <p>Map service: www.geocommunicator.gov Service Name: BLM_MAP_BASEMAPS or BLM_BASEMAPS_wms</p>	<p>Base Maps</p> <ul style="list-style-type: none"> • County Boundaries • State Boundaries • Urban Areas • Major Roads <p>Online Reference themes not available as map services</p> <ul style="list-style-type: none"> • Color Shaded Relief • Digital Raster Graphics (DRG's) – topographic maps • Digital Ortho Quads (DOQ's) - imagery • Lakes • PLSS Principal Meridians • Rivers
<p><i>Additional NILS GeoCommunicator Tools</i></p>	
<p>Geocoder</p>	<p>Geocoder allows for the conversion of Latitude and Longitude</p>