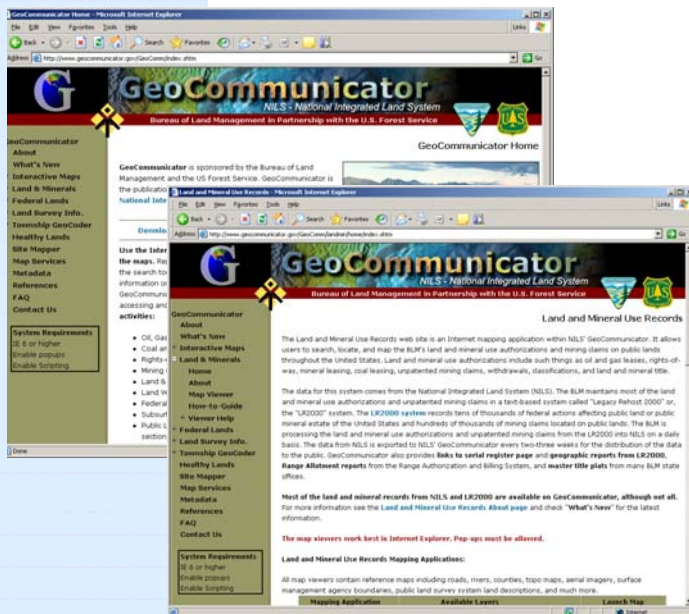


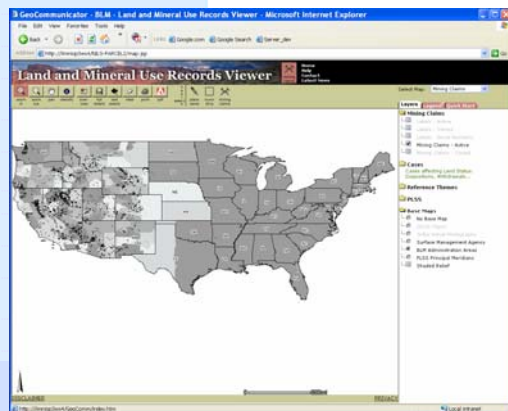


Accessing GeoCommunicator's Mining Claim Records

The Land and Mineral Use Records interactive map is available through the BLM's GeoCommunicator website (www.geocommunicator.gov) and contains information from the BLM's National Integrated Land System (NILS) with access to the BLM's Legacy Rehost System - LR2000 (www.blm.gov/lr2000). The following instructions will guide you through an interactive web mapping session where you can search for Mining Claim (MC) data and integrate it with other spatial reference themes from the BLM and USGS.



Land & Mineral Use Records Home



Map Viewer with Mining Claims and map layers

Connect to the GeoCommunicator website at <http://www.geocommunicator.gov>. Use Internet Explorer as your browser. Pop-Ups must be allowed.

Click "Land & Mineral Use Records". This link takes you to an introductory page where you can learn about the BLM's Land and Mineral Use Records and what the web site has to offer.

Click "Launch Map Viewer" under Mining Claims to start the mapping interface.

The Land & Mineral Use Records Viewer offers the capability to search, access, and dynamically map data from NILS and provides links to BLM's LR2000 System for reports.

Verify that "Select Map" says Mining Claims or use the pull down arrow to select Mining Claims.

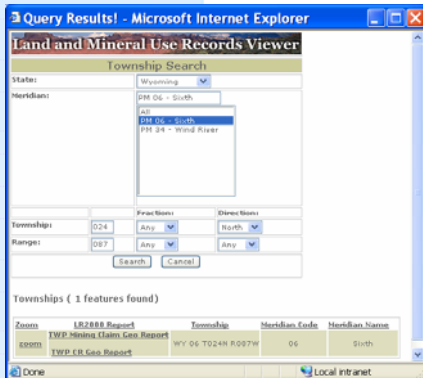
The map layers provide reference themes from BLM and USGS to provide spatial context that can be used to help you locate an area or to create a map.

Layers that are active have a check mark next to the name and the letters are in **bold**. The map layers in light gray are not active at the current map display. Zooming in/out will activate/deactivate the map layers.

The base maps can be toggled on and off by clicking the buttons under the "Base Maps" folder.



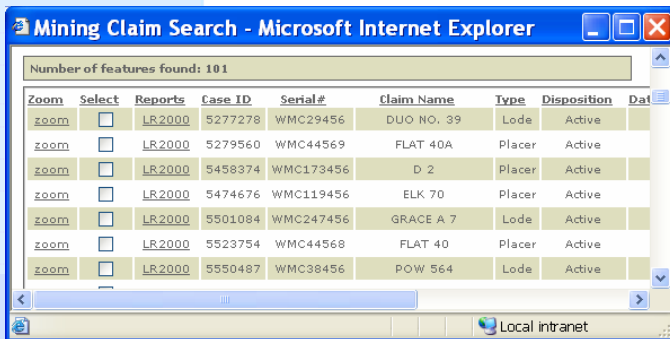
MC Parcels



Township Search with results



Search Using Mining Claim Information



Mining Claim Search Results

SEARCH For Mining Claims 4 ways

1-Search using Map tools



Click "Zoom In" from the menu bar, then click (hold) and drag a box on the map where you want to zoom in to. Zoom in closer to display the mining claims.

-OR-

2-Search using Place Name or Township Search



Click on "Place Name" from the menu bar, and enter the name of a place, such as a city, state, county, etc. A list of place names is returned. Click on the appropriate name in the list to zoom to your area of interest.

-OR-

3-Search using Township Search

Click Township and Enter State, Meridian, Township, range. From the search results select zoom to go to the location. For a list of all MCs in the township, select **LR2000 Mining Claim Geo Report**. See Run LR2000 Reports below for more info.

-OR-

4-Search using Mining Claim Search



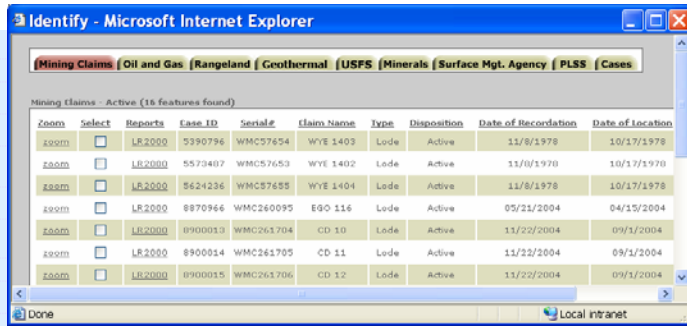
Click on "Mining Claims" from the menu bar to bring up the Mining Claim Search window. Search for Mining Claims using claim name, serial number, dates, etc. Claim Name and Serial Number allow you to enter only a partial name or number to search.

As an example, enter "Jack" in Claim Name and click "Search" or enter a partial serial number.

SEARCH RESULTS

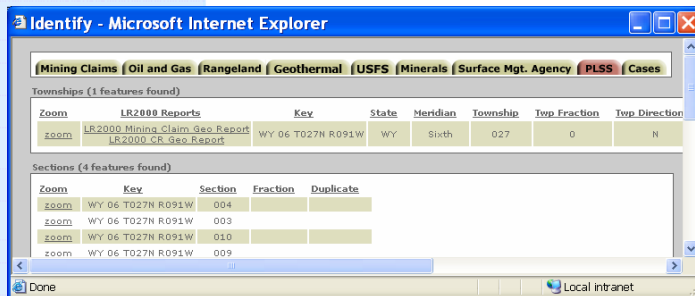
All of the mining claims that meet your search criteria will be displayed in the search results. Click in the "Select" box to highlight the mining claim. Select "Zoom" to go to the claim on the map.

Click "LR2000 SRP Report" to get a **up-to-date** serial register report directly from the BLM LR2000 Reporting System. The report contains all the online BLM Mining Claim data we have for the claim.



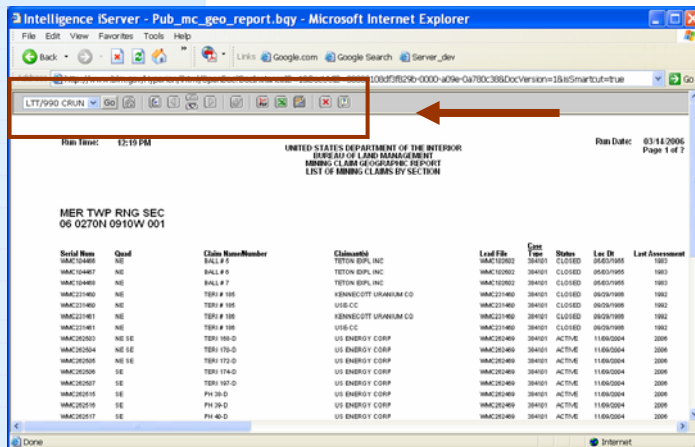
Identify Window – showing Mining Claim record information

For a full **up-to-date** report, click on “LR2000” from the **Identify Window** to get a serial register page directly from the BLM’s LR2000 Reporting System.



Identify Window - showing information under the PLSS tab including links to TWP MC GeoReport

The **Township Search** also provides links to the TWP MC Geo Report.



For more information visit <http://www.geocommunicator.gov> or contact: Ginny Pyles, Bureau of Land Management, (303) 236-4034, gpyles@blm.gov Steve Dodds, U.S. Forest Service, (435) 865-3755, sdodds@fs.fed.us

Identify Mining Claim Parcels



The “**Identify**” button is used to display record information about a parcel on the map. Click the “**Identify**” button and then click on the parcel on the map. In the **Identify Window** click on the tabs for record data including Surface Mgt. Agency, PLSS and Cases (these are Cases That Affect Land Status).

Click on “**Zoom**” to go to the record you want to display on the map. To highlight the parcel on the map, check the “**Select**” box next to the record. The data in the **Identify Window** is a subset of the data that is in LR2000 and is a few weeks old.

Run LR2000 Reports - Find MC that aren't displayed on the map

Under the PLSS tab you can get a **LR2000 Mining Claim Geo Report**. Click on the link to launch a live report from the LR2000 reporting system. This report will display the active and closed Mining Claims by legal description that occur within the township.

This will help you to find all of the mining claims occurring on a piece of land even though they are not displayed on the map or are in GeoCommunicator.

LR2000 Reports

Use the controls at the top of the LR2000 report to view all of the pages in the report or to export the data to an excel spreadsheet.

You can also get LR2000 reports directly from the LR2000 Reporting System at: <http://www.blm.gov/lr2000>, select Reports from the menu bar.

V1007



National Integrated Land System (NILS)

www.blm.gov/nils

