



Accessing GeoCommunicator's Energy Records

The Land and Mineral Use Records Energy map is available through the BLM's NILES GeoCommunicator website (www.geocommunicator.gov) and contains information from the BLM's National Integrated Land System (NILES) with access to the BLM's Legacy Rehost System - LR2000 (www.blm.gov/lr2000). The following instructions will guide you through an interactive web mapping session where you can search for Energy data and integrate it with other spatial reference themes from the BLM and USGS.



Energy Map link

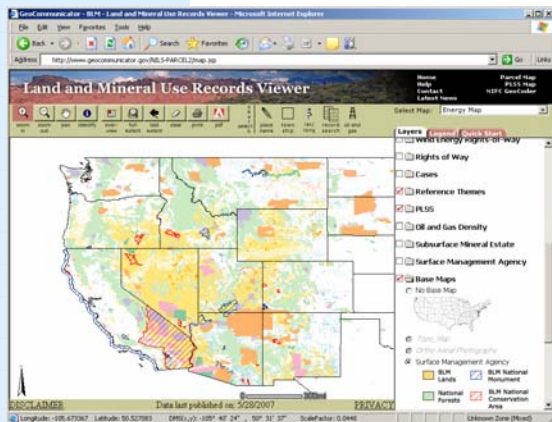
Connect to the GeoCommunicator website at <http://www.geocommunicator.gov>. Use Internet Explorer as your browser. Pop-Ups must be allowed.

Click "**Energy Map**" from the link on the home page.

The Energy Viewer offers the capability to search, access, and dynamically map oil & gas, coal, geothermal, oil shale, wind, and solar power and other rights-of-way that occur on public lands in one map view. Links to BLM's LR2000 System for reports.

GeoCommunicator Web Site

Verify that "**Select Map**" says Energy or use the pull down arrow to select Energy.



Energy Viewer showing Federal Surface Ownership.

The map layers provide reference themes from BLM and USGS to provide spatial context that can be used to help you locate an area or to create a map.

Click the folder to open it. Layers that are active have a check mark next to the name and the letters are in **bold**. The map layers in light gray are not active at the current map display. Zooming in/out will activate/deactivate the map layers. You can activate/deactivate checked layers in the folder by checking/unchecking the folder.

The base maps can be toggled on and off by clicking the buttons under the "Base Maps" folder.

SEARCH For Energy 4-ways

1-Search using Map tools



zoom in

Click "**Zoom In**" from the menu bar, then click (hold) and drag a box on the map where you want to zoom in to. Zoom in closer to display the

cases.

-OR-

2-Search using Place Name or Township Search



place name

Click on "**Place Name**" from the menu bar, and enter the name of a place, such as a city, state, county, etc. A list of place names is returned. Click on the appropriate name in the list to zoom to your area of interest.

-OR-

3-Search using Township Search



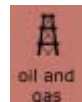
township

Click Township and enter State, Meridian, Township, Range. From the search results select zoom to go to the location.

For a list of all Energy cases in the township, select **LR2000 CR Geo Report**. See Run LR2000 Reports below for more info. Click **Master Title Plat** for scanned image if one is available.

-OR-

4-Search using Oil & Gas Search



oil and gas

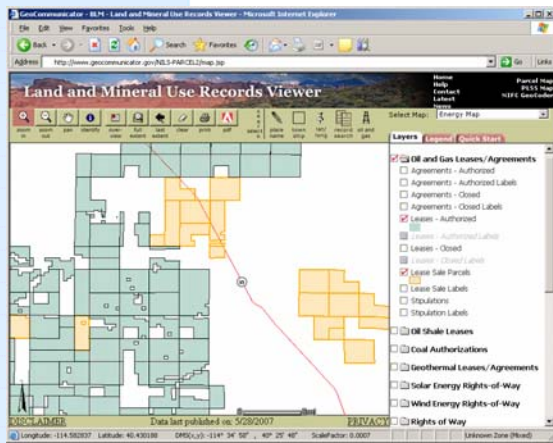
Click on "**Oil & Gas Search**" from the menu bar to bring up the O&G Search window. Search for O&G leases or agreements using agreement or PA name, serial number, dates, etc. Name and Serial Number allow you to enter only a partial name or number to search.

As an example, enter "jack" in Agreement Name and click "Search" or enter a partial serial number in the alpha or numeric serial number field. Use the expiration date field to search for expiring leases.

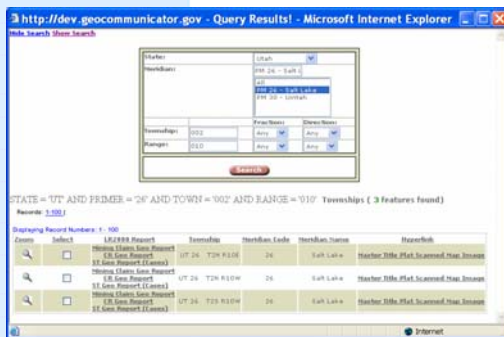
SEARCH RESULTS

All of the O&G cases that meet your search criteria will be displayed in the search results. Click in the "**Select**" box to highlight the parcel or select "**Zoom**" to go to the parcel on the map.

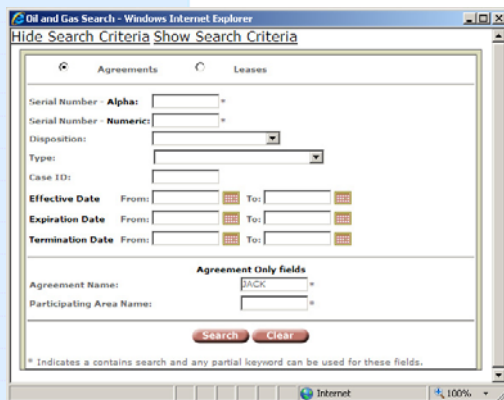
Click "**LR2000 CR Report**" to get an **up-to-date** serial register report of the case directly from the BLM LR2000 Reporting System. The report contains all the online data we have for the O&G case.



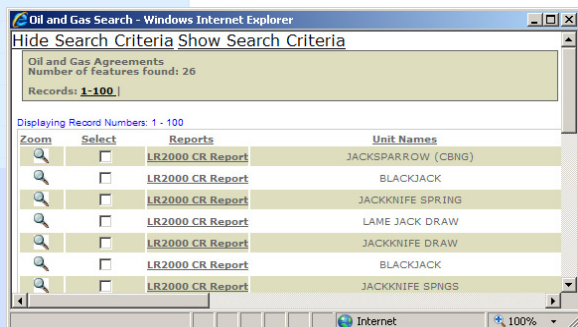
Energy Parcels (O&G, Coal, Geothermal)



Township Search with results and links



Search Using O&G Information

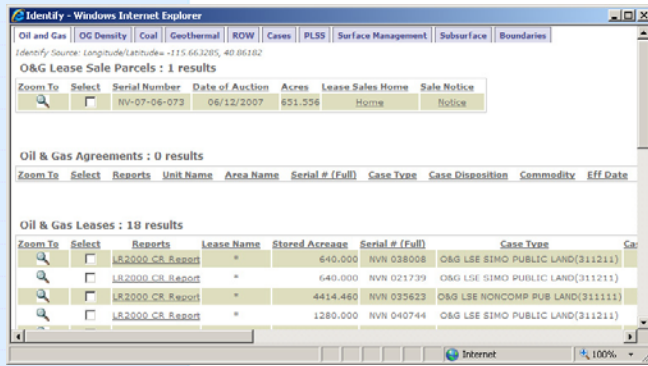


O&G Search Results

Identify Energy Parcels



The "Identify" button is used to display record information about a parcel on the map. Click the "Identify" button and then click on the parcel on the map. From the **Identify Window** click on the tabs for record data including Surface Management Agency, PLSS (T/R/S) and Cases That Affect Land Status (CTALS).

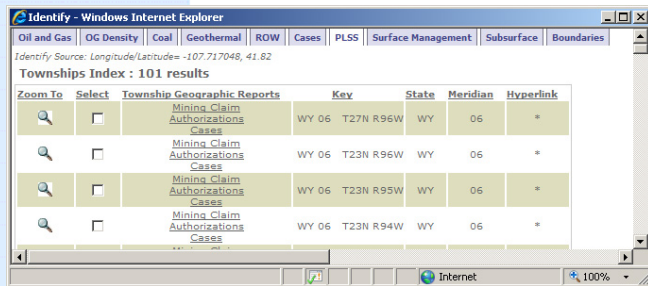


Identify Window – Showing O&G Record Information

For a full **up-to-date** report, click on "LR2000 CR Report" from the **Identify Window** to get a serial register page directly from the BLM's LR2000 Reporting System.

Click on "Zoom" to go to the record you want to display on the map. To highlight the parcel on the map, check the "Select" box next to the record. The data in the **Identify Window** is a subset of the data that is in LR2000 and is a few weeks old.

Run LR2000 Reports - Find Energy cases that aren't being displayed



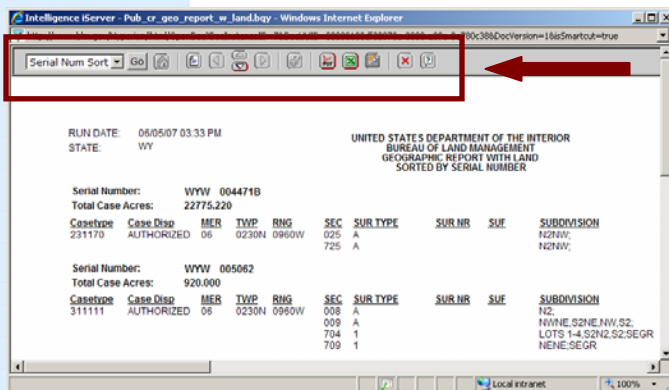
Identify Window - showing information under the PLSS tab including links to TWP CR GeoReport

Under the PLSS tab you can get a **LR2000 CR Geo Report**. Click on the **Authorizations** link to launch a live report from the LR2000 reporting system. This report will display the active and closed cases by serial number that occur within the township.

The **Township Search** also provides links to the **TWP CR Geo Report**.

This will help you to find all of the cases occurring on a piece of land even though they are not displayed on the map or contained in GeoCommunicator.

LR2000 Reports



Use the controls at the top of the LR2000 report to view all of the pages in the report or to export the data to an excel spreadsheet.

You can also get LR2000 reports directly from the LR2000 Reporting System at: <http://www.blm.gov/lr2000>, select Reports from the menu bar.

For more information please visit <http://www.geocommunicator.gov>.

