



## Accessing GeoCommunicator's Land Survey Information System (LSIS)

The Land Survey Information System is the official federal distribution site for Public Land Survey System (PLSS) data (townships, sections, subdivisions of sections, latitude, and longitude) and other survey-based data. This information is collected and maintained by the BLM as a streaming Internet map service accessible from any computer with access to the Internet. The data is downloadable from an interactive map through the BLM's GeoCommunicator. The following instructions will guide you through an interactive web mapping session where you can search for Land Survey information and download the data to your computer.



Land Survey Information System Home Page

Connect to the GeoCommunicator website at <http://www.geocommunicator.gov>.

Make sure you **allow pop-ups** for this site, works best in Internet Explorer.

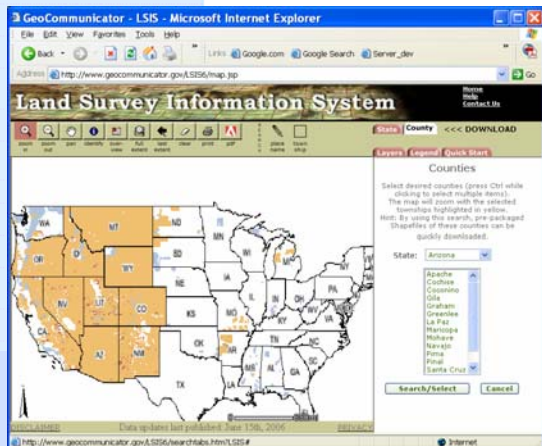
GeoCommunicator offers three mapping web sites:

- **Land & Mineral Use Records**
- **Federal Land Stewardship**
- **Land Survey Information System**

Click "**Land Survey Information**".

This link takes you to the Land Survey home page, where you can find information about the BLM's Land Survey Information System, read the metadata, and learn how to download data. PLSS data are in Geographic Coordinates NAD83.

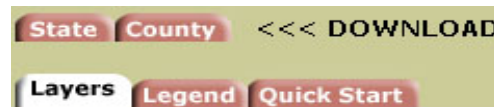
Click "**Map Viewer and Download**" to start the mapping interface.



Land Survey Information System Map Viewer

### **SEARCH and DOWNLOAD DATA**

There are several ways to search and download data:



You can download data by using the **State or County** tabs. For example, click on the "**County**" tab. Select a state from the drop-down list. A list of counties will appear for that state, choose a county, and click "**Search/ Select**".



Use the **Township Select** tool to select and download one or more individual townships.



*List of Selected Townships to be Downloaded*

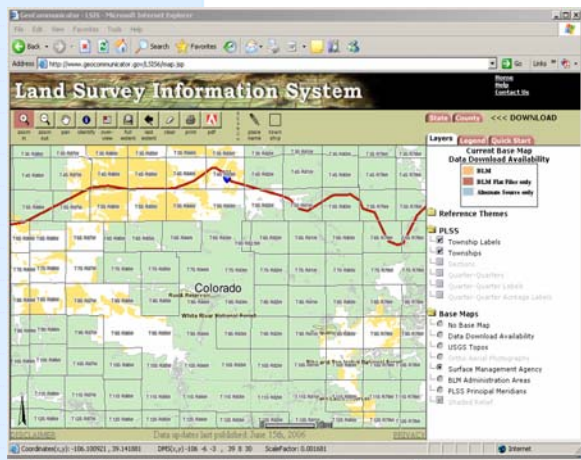
### **SELECT TOWNSHIPS**

A window will pop up showing the townships selected. Data can be downloaded from different providers:

- BLM- GIS Shapefile
- USFS & other sources- (GIS Shapefile)

Select the desired provider and click "**Download Now**". BLM is the preferred source. A message box will inform you of the size of the zip file containing the specified townships. Click "**Download Now**".

Note - each source of the data requires a separate download.



*Interactive Map using Federal Surface Management Agency Boundaries*

### **USING AN INTERACTIVE MAP**



You can use the GIS navigation tools to locate an area of interest. To view more detailed information regarding a specific area, choose "**Zoom in**" from the tool bar and then click (hold) and drag to create a box on the map. You can continue to "**Zoom in**" for more detailed information. Use the "**Identify**" tool to get information about the legal description.

To add different base maps, choose the "**Layers**" tab on the right-hand margin, and then click the button next to any of the base maps you would like to display. You can toggle the base maps on and off. The surface management agency base map will show the federal surface management agencies for the U.S.

For more information visit <http://www.geocommunicator.gov> or contact:  
 Gina LeFort, Bureau of Land Management, (303) 236-0951, [Regina\\_Lefort@blm.gov](mailto:Regina_Lefort@blm.gov)  
 Jim McGinnis, U.S. Forest Service, (541) 552-1591, [jmcginnis@fs.fed.us](mailto:jmcginnis@fs.fed.us)

V0906



**National Integrated Land System (NILS)**

[www.blm.gov/nils](http://www.blm.gov/nils)

