



Accessing GeoCommunicator's Land & Minerals Use Records

The Land and Mineral Use Records interactive map is available through the BLM's GeoCommunicator website and contains information from the BLM's National Integrated Land System (NILS) and the Legacy Rehost System (LR2000). Oil & gas, coal, and other mineral leasing, ROW, conveyances, and mining claims issued or recorded by the BLM are now available in the map viewer or as an Internet map service, accessible from any computer with access to the Internet. The following instructions will guide you through an interactive web mapping session where you can search for oil & gas (O&G) data and integrate it with other spatial reference themes from the BLM and USGS.



Land & Mineral Use Records Home Page

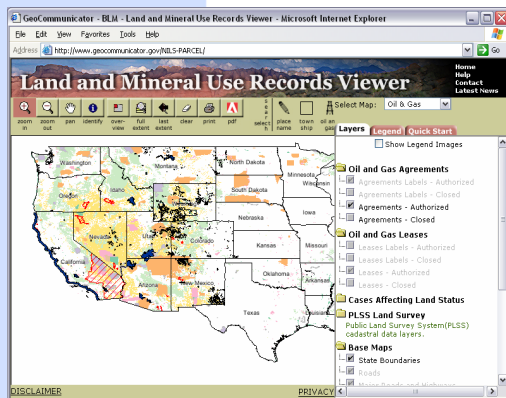
Connect to the GeoCommunicator website at <http://www.geocommunicator.gov>. Use Internet Explorer as your browser. Pop-Ups must be allowed.

GeoCommunicator offers three mapping websites:

- **Land & Mineral Use Records** (oil & gas leasing, ROW, mining claims, coal & other solid mineral leasing, and cases affecting land status)
- **Federal Land Stewardship** (Federal Surface Management Agency Boundaries)
- **Land Survey Information System** (PLSS- T/R/S land descriptions)

Click "**Land & Mineral Use Records**". This link takes you to an introductory page where you can learn about the BLM's Land and Mineral Use Records and what the website has to offer.

Click "**Map Viewer**" to start the mapping interface. The Land & mineral Use Records Viewer offers the capability to search, access, and dynamically map data from NILS and the BLM's LR2000 System including mining claims, oil & gas and mineral leasing, and conveyances.

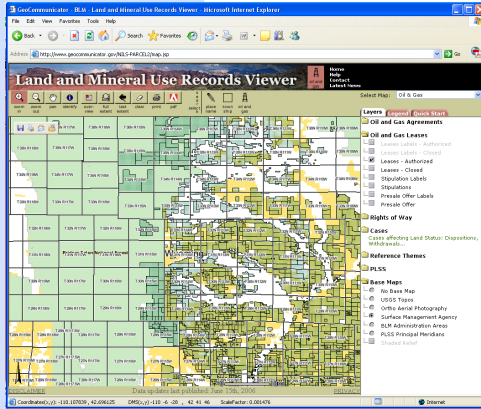


Land & Mineral Map Viewer

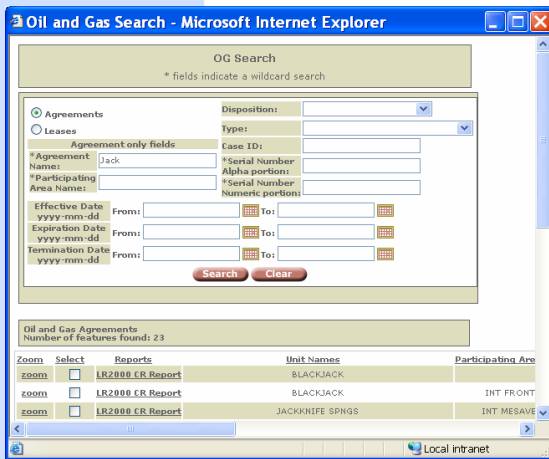
Next to "**Select Map**" use the pull down arrow to select oil and gas, mining claims, etc. For this example, we will select "**Oil and Gas**".

Reference themes from BLM and USGS provide spatial context that can be used to help you locate an area or to create a map. The base maps can be toggled on and off by clicking the buttons under the "**Base Maps**" folder in the "**Layers**" tab.

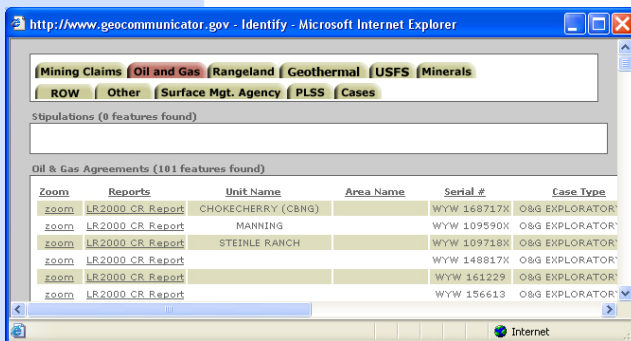
SEARCH FOR DATA



Search Using Map Tools



Search by O&G Data Showing Search Results



Identify Window

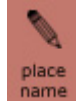
For more information visit <http://www.geocommunicator.gov> or contact:
Ginny Pyles, Bureau of Land Management, (303) 236-4034, gpyles@blm.gov
Jim McGinnis, U.S. Forest Service, (541) 552-1591, jmcginnis@fs.fed.us



Search using an Interactive Map

Click "Zoom In" from the menu bar, then click (hold) and drag a box on the map where you want to zoom in to.

-OR-



Search using Place Name

Click on "Place Name" from the menu bar, and enter the name of a place, such as a city, state, county, etc. A list of place names is returned. Click on the appropriate name in the list to zoom to your area of interest.

-OR-

Search using "Oil and Gas" Search

Click on "Oil and Gas" from the menu bar to bring up the "Oil and Gas Search" window. Search for oil and gas agreements or leases using name, serial number, date range, etc. * indicates that you can use a partial name or number.

-OR-



Search using the Record Search

Generic case search for other casetypes.

SEARCH RESULTS

All of the cases that meet your search criteria will be displayed in the search results. Click "Zoom" and "Select" to go to the parcel on the map.



The "Identify" button is used to display record information about a parcel on the map. In the "Identify Window", click on the "Oil and Gas" tab for information about the lease. Click on the other tabs, such as "Surface Mgt Agency", "PLSS" (T/R/S), and "Cases That Affect Land Status" (CTALS) for additional information and links.

Click on "Zoom" to go to the record you want to display on the map. To highlight the parcel on the map, check the "Select" box next to the record. Click on "LR2000" for a current serial register page from the BLM's LR2000 System.

V1106



National Integrated Land System (NILS)

www.blm.gov/nils

