

# Trail Highlights

# General Information



Big Hill was named when the early prospectors, heading to gold fields with wagons and teams of horses, could barely make it over the "Big Hill" when coming from Spearfish.

Loops A, A-1, and B primarily meander through mixed stands of quaking aspen, paper birch, and ponderosa pine.

Loops C and D cross extensive stands of ponderosa pine with small patches of quaking aspen and paper birch.

Spur D-1 accesses a scenic overlook of Spearfish Canyon and Spearfish Mountain.

During the winter season the trails are groomed for cross-country skiing in cooperation with the Black Hills Nordic Ski Club. Please help by contributing at the donation box at the trailhead.



### Trail Ethics

Please do not cut across switchbacks or pioneer new trails.



### Extreme Weather

Clear, sunny days can quickly turn into afternoon thunderstorms. Start hikes early and carry raingear.



### Stream Water

Do not drink it! Each trail user should carry at least one quart of water.



### Motors and Machines

This trail is not maintained for the use of motorized vehicle traffic.

M  
O  
R  
E  
  
I  
N  
F  
O  
R  
M  
A  
T  
I  
O  
N

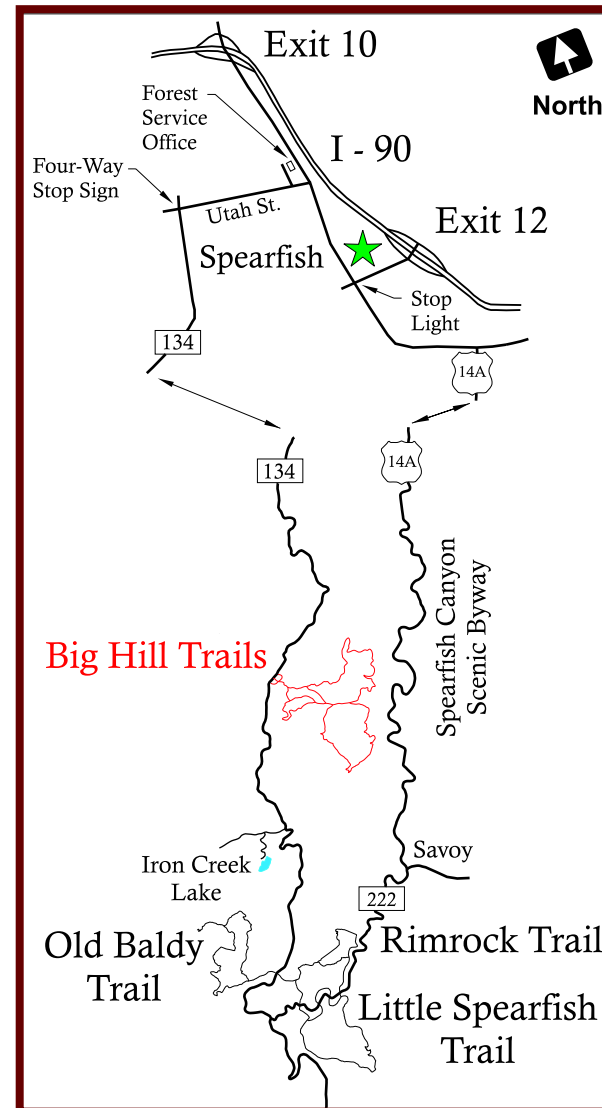
➔ Northern Hills Ranger District  
2014 North Main  
Spearfish, SD 57783  
(605) 642-4622

➔ Supervisor's Office  
1019 N. 5th St.  
Custer, SD 57730  
(605) 673-9200

\*Remember that all hay brought onto National Forest lands must be certified weed free.

**Enjoy the National Forest, but please TREAD LIGHTLY and DON'T LITTER.**

## Location Map



# Big Hill Trails

## Trail Number 72



# Black Hills National Forest



The United States Department of Agriculture (USDA) prohibits discrimination in its programs on the basis of race, color, national origin, gender, religion, age, disability, political beliefs, sexual orientation, and marital or family status. (Not all prohibited bases apply to all programs.) Persons with disabilities who require alternative means for communication of program information (Braille, large print, audiotape, etc.) Should contact USDA's TARGET Center at (202) 720-2600 (voice and TDD).

To file a complaint of program discrimination, write USDA Director, Office of Civil Rights, Room 326-W, Whitten Building, 14th and Independence Avenue, SW, Washington, DC 20250-9410, or call (202) 720-5964 (voice and TDD). USDA is an equal opportunity provider and employer.

# Big Hill Trails

Easy Moderate Difficult

Elevation: 5,000 to 5,480 feet

Length: Loop A 2.8 miles groomed  
 Loop A1 0.5 miles groomed  
 Loop B 3.5 miles un-groomed  
 Loop C 6.9 miles groomed  
 Loop D 7.5 miles groomed  
 Spur D1 0.2 miles un-groomed

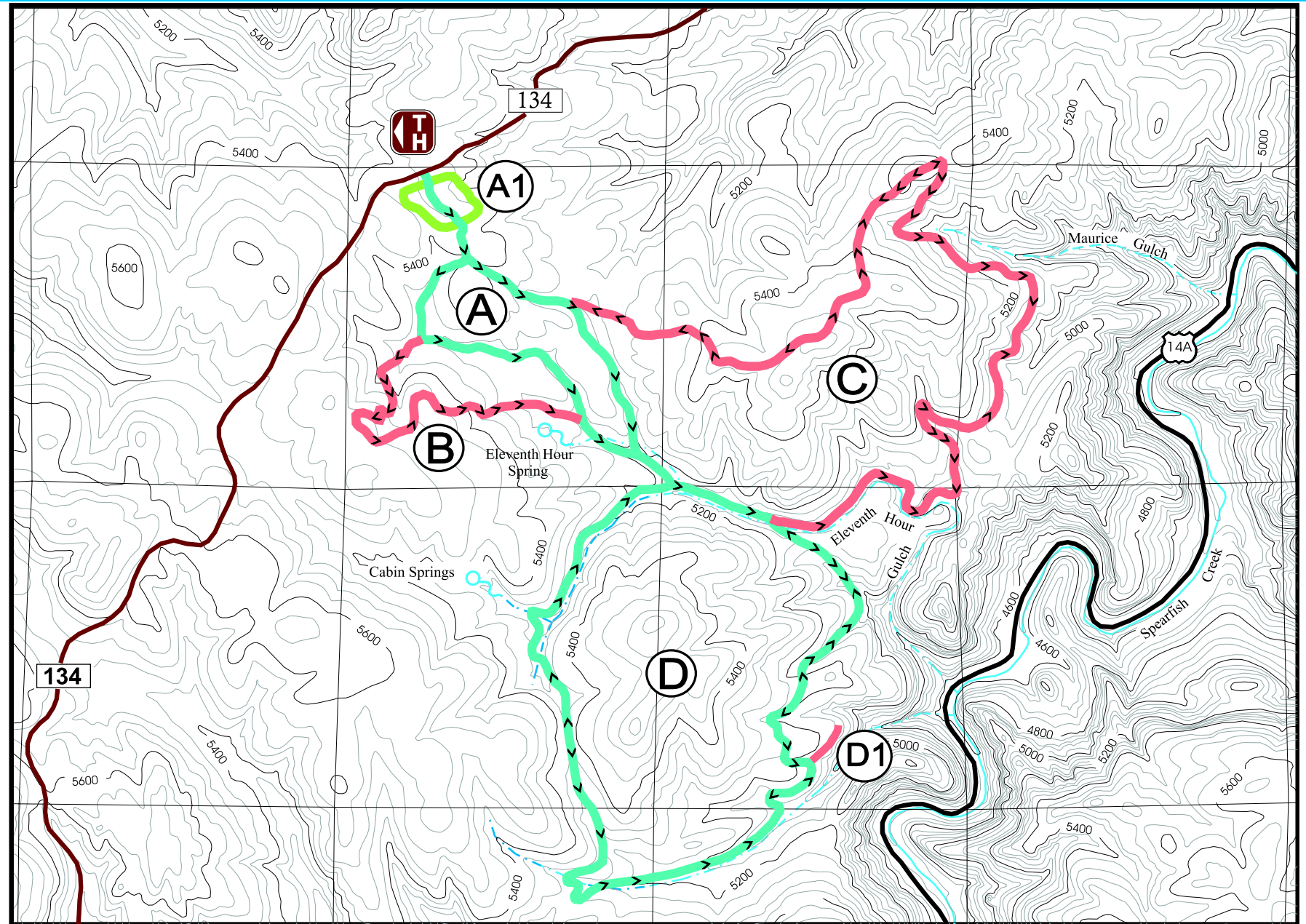
Trail lengths shown represent the distance from the trailhead around the loop and back to the trailhead. Total length of all trails is 13.6 miles.

Difficulty: Easy to Difficult

Location: From Spearfish take FSR 134 south approximately eight miles to the trailhead.



Trails are marked with blue diamonds.



<b>MAP LEGEND</b>	Trail	U.S. Highway	Trailhead	>> Chevrons - Indicate degree of slope and point downhill. The closer together they are, the steeper the hill. Between each chevron is a vertical distance of 40 feet.
	Creek	Forest Service Road (FSR)	Scale - 2" = 1 mile	