

*The FCC Integrated Surface
Hourly Database, A New
Resource for Global Climate
Data*

Why Bother ??

- Multiple data sources difficult to use
 - -- Differing formats
 - -- Differing time conventions (LST, GMT)
 - -- Differing station numbering systems
- Need to make servicing more efficient
- Need for additional quality control

Project Phases

- Proposal and funding
- Research and preparatory
- Programming
- Data processing
- Quality control phases 1, 2, and 3
- Cdrom product
- Online implementation

Proposal and Funding

- ESDIM and OGP
- Federal Climate Complex datasets
 - -- NCDC US surface hourly
 - -- USAF global surface hourly & synoptic
 - -- NCDC US hourly precipitation
- Full period of digital record
- “Merge” into one global database

Research and Preparatory

- Detailed project plan
- LST → GMT research
- Metadata prep
- FCC coordination

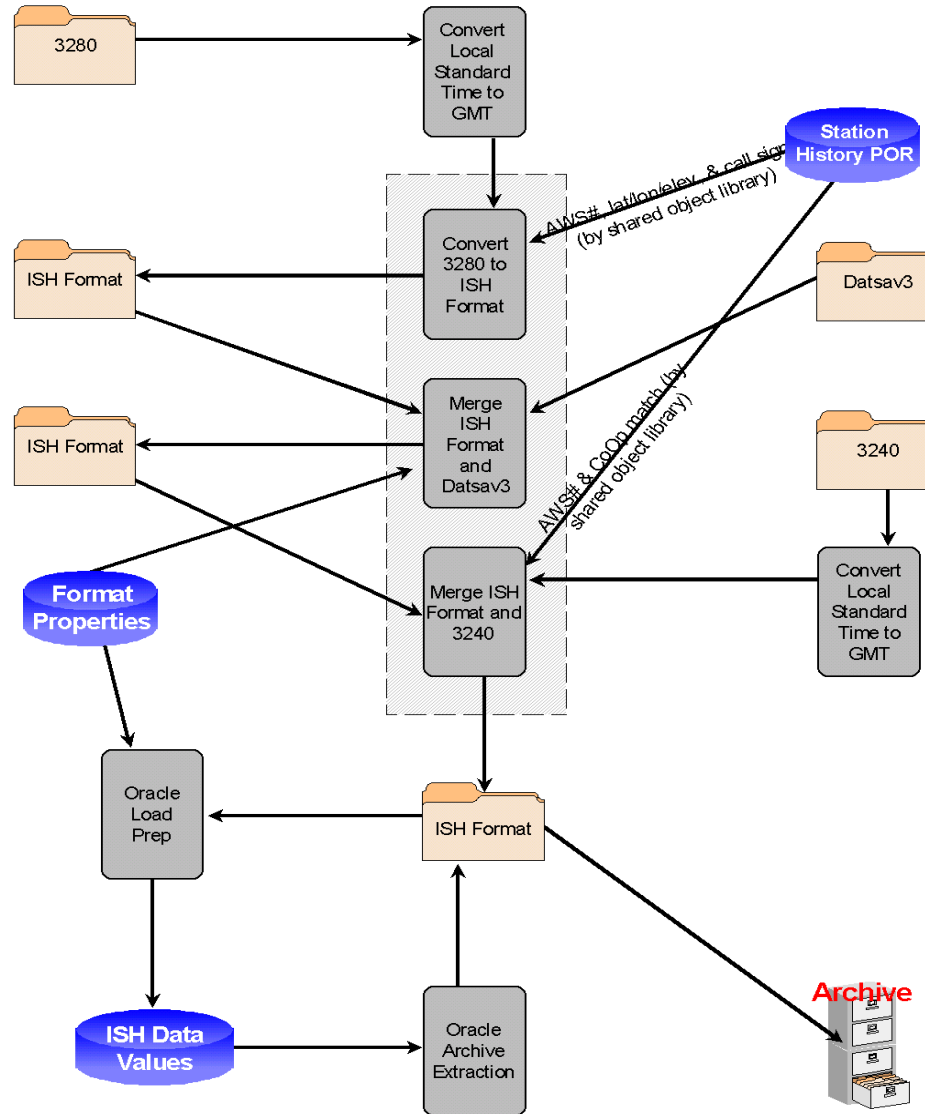
Programming

- Time conversions (ISH in GMT time)
- Format conversions
- Station history preparation
- Data merging
- Inventories

Data Processing

- Time and format conversions
- Merging where applicable
- Produce full period of record archive
- Inventories and inventory comparison

Integrated Surface Hourly Dataset Initial Population Process Flow



Quality Control

- Phase 1 – selected reprocessing
- Phase 2 – program and process QC algorithms to correct random and systematic errors in the data
- Phase 3 – additional QC – homogeneity checks, spatial checks, etc -- unfunded

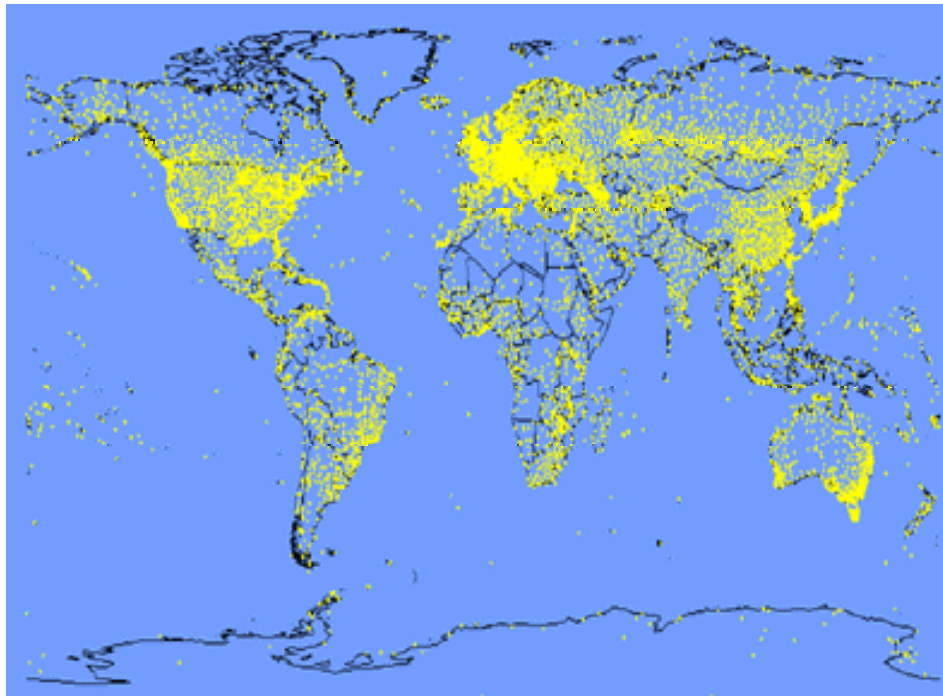
The Results....

~ 20,000 stations historically

As early as 1900 to present

Version 1 completed late 2000

Version 2 completed early 2002



CDROM Product

- ISH data for 1995-2000 period
- Data selection via map interface
- Approximately 10,000 stations

Online Implementation

- Data modeling for relational database
- Integrate data into NNDC CDO system
- Programming to select data temporally and spatially (by region, country, state, etc)
- Implement initially for most recent data
- Implement later for full period of record
- Additional hardware requirements

Future Plans

- Additional datasets merged into ISH
- Additional quality control
- Additional metadata/station histories
- Additional scientific studies and use of the data

Climatic Data Online - Application Router - Netscape

File Edit View Go Communicator Help

Back Forward Reload Home Search Netscape Print Security Shop Stop

Bookmarks Location: <http://cdo.ncdc.noaa.gov/plclimdev/plsql/poemain.accessrouter> What's Related

NOAA NNDC CLIMATE DATA ONLINE

Accessing data selection screen for
Surface Data, Hourly Global

Simplified: this system allows for very easy selection of data for a station or multiple stations, for user-selected time period. The elements provided include precipitation, temperature, dewpoint, winds, visibility, cloud cover, pressure, and present weather (as available for each station) on an [easy-to-read, printable form](#).

Continue With SIMPLIFIED Options

Advanced: this system allows for selection of data for a station or multiple stations, for user-selected time period. In contrast to the simplified system, the user selects the elements of interest (eg, snow depth) and the output format--such as an [ASCII text file](#) for later use in a spreadsheet, or a [printable form](#) -- user choice of one or the other.

Continue With ADVANCED Options

Document: Done

Start Climatic Data Online -... Inbox - Netscape Folder Microsoft PowerPoint - [Pre... 1:42 PM

Surface Data, Hourly Global - Initial Selection Criteria - Netscape

File Edit View Go Communicator Help

Back Forward Reload Home Search Netscape Print Security Shop Stop

Bookmarks Location: <http://cdo.ncdc.noaa.gov/plclimdev/plsql/cdomain.abbrev2id> What's Related

NNDC CLIMATE DATA ONLINE





Surface Data, Hourly Global (TD3505)

Retrieve data for:

- Worldwide
- Geographic Region
- Country
- Station Range (AWS or WBAN IDs): to

Continue Clear Selections Previous Page New Search

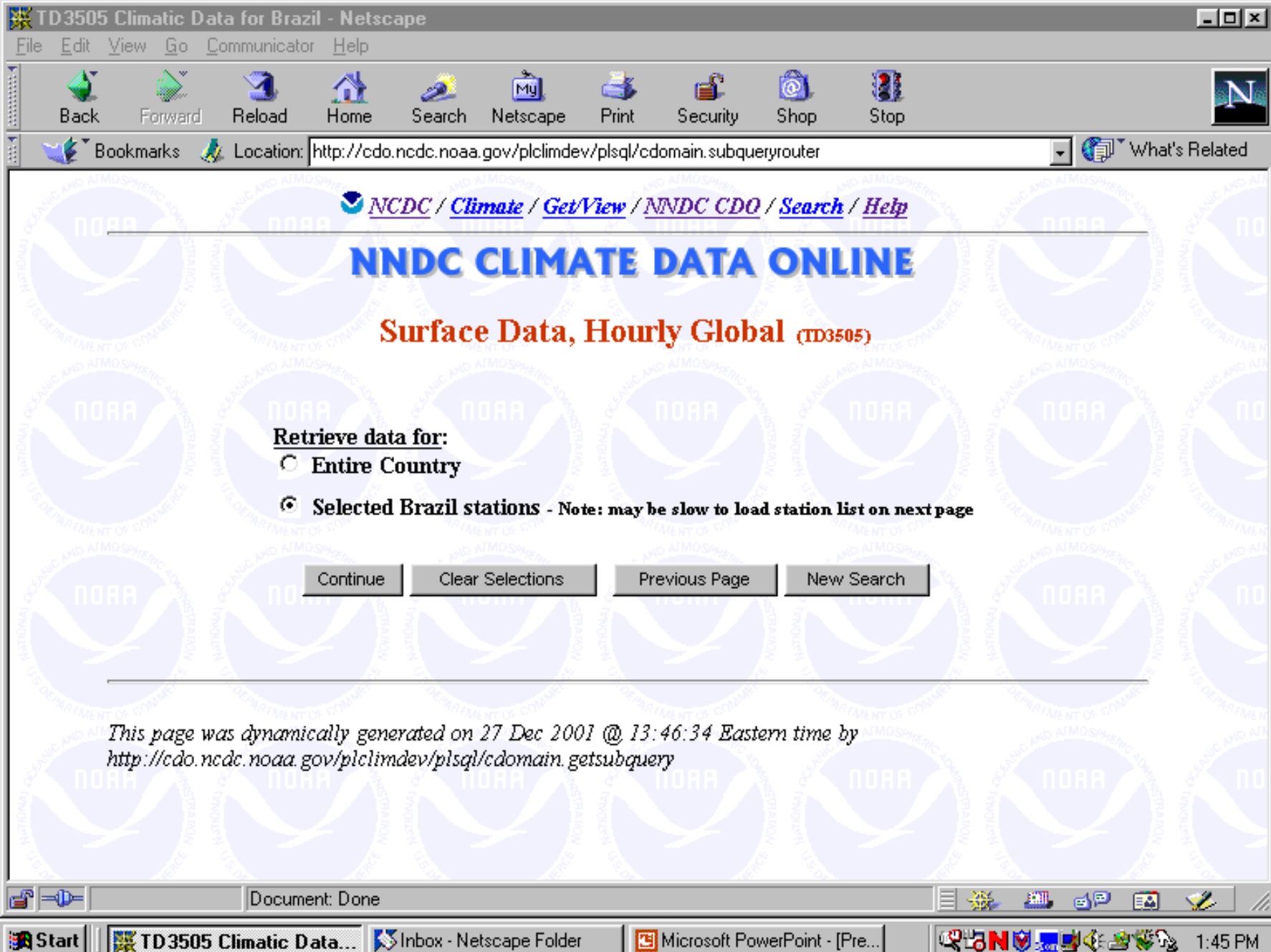
Data Documentation

-  Data format documentation
-  ASCII Text Sample
-  Webform Sample
-  Station list (may take several minutes to load)

Data and pricing details at the [CDO Help Page](#)

Document: Done

Start Surface Data, Hourly ... Inbox - Netscape Folder Microsoft PowerPoint - [Pre... 1:43 PM



[NCDC](#) / [Climate](#) / [Get/View](#) / [NNDC CDO](#) / [Search](#) / [Help](#)

NNDC CLIMATE DATA ONLINE

Surface Data, Hourly Global (TD3505)

Retrieve data for:

- Entire Country
- Selected Brazil stations - Note: may be slow to load station list on next page

This page was dynamically generated on 27 Dec 2001 @ 13:46:34 Eastern time by http://cdo.ncdc.noaa.gov/plclimdev/plsql/cdomain.getsubquery

TD3505 Climatic Data for Brazil - Netscape

File Edit View Go Communicator Help

Back Forward Reload Home Search Netscape Print Security Shop Stop

Bookmarks Location: <http://cdo.ncdc.noaa.gov/plclimdev/plsql/cdomain.subqueryRouter> What's Related

[NCDC](#) / [Climate](#) / [Get/View](#) / [NNDC CDO](#) / [Search](#) / [Help](#)

NNDC CLIMATE DATA ONLINE

Surface Data, Hourly Global (TD3505)

Select Brazil stations *(maximum of 100)*

Station Name	AWS	WBAN ID	Period of Record
Abrolhos Island.....	834990	99999	01/1995 to 09/1997
Afonso Arpt (Mil).....	837480	99999	01/1995 to 12/1999
Agua Branca.....	829890	99999	04/1995 to 01/1999
Agua Clara.....	836150	99999	01/1995 to 11/1998
Aimores.....	835950	99999	01/1995 to 12/1999
Alagoinha.....	832490	99999	01/1995 to 12/1999
Alcomat.....	833020	99999	01/1995 to 12/1999
Alta Floresta.....	829650	99999	01/1995 to 12/1999
Altamira.....	823530	99999	01/1995 to 12/1999
Anapolis (Braz-Afb).....	834190	99999	01/1995 to 12/1999
Angra Dos Reis.....	837880	99999	01/1995 to 10/1995

[Sort by Station ID](#)

Continue Clear Selections Previous Page New Search

Document: Done

Start TD3505 Climatic Data... Inbox - Netscape Folder Microsoft PowerPoint - [Pre... 1:46 PM

TD3505 Climatic Data for Brazil - Netscape

File Edit View Go Communicator Help

Back Forward Reload Home Search Netscape Print Security Shop Stop

Bookmarks Location: <http://cdo.ncdc.noaa.gov/plclimdev/plsql/cdomain.dateoutmode> What's Related

[NCDC](#) / [Climate](#) / [GetView](#) / [NNDC CDO](#) / [Search](#) / [Help](#)

NNDC CLIMATE DATA ONLINE

Surface Data, Hourly Global (TD3505)
for Brazil - 1 stations.

Select Date Restrictions:

Use Date Range

Year Month Day Hour

From 1999 01 01 00

To 1999 01 31 23

Select Only Obs. on the Hour

Output Formats:
Space Delimited Text File
Webform HTML File

Output via: FTP

Continue Clear Selections Previous Page New Search

Document: Done

Start TD3505 Climatic Data... Inbox - Netscape Folder Microsoft PowerPoint - [Pre...] 1:47 PM

TD3505 - Surface Data, Hourly Global, Request Summary - Netscape

File Edit View Go Communicator Help

Back Forward Reload Home Search Netscape Print Security Shop Stop

Bookmarks Location: <http://cdo.ncdc.noaa.gov/cgi-bin/cdo/cdodev.pl> What's Related

NNDC CLIMATE DATA ONLINE

TD3505 - Surface Data, Hourly Global, Request Summary

Brazil / Selected Stations - includes 1 stations ([See selected stations below](#))

Date Range (Year / Month / Day / Hour):
1999/01/01/00 to 1999/01/31/23

Selected Output Format:

Selected Output Media:
FTP

Hourly Obs Available:
See [Inventory File](#) - **Note!** Inventory may not be available for several minutes

Output File Size (bytes):
Not Available

Please check the [Inventory File](#) to see if the requested period of record is available before ordering.

IMPORTANT! Please enter a **valid** email address below so we can notify you when your request has finished processing.

E-mail Address:

Submit Request

Document: Done

Start | TD3505 - Surface Dat... | Inbox - Netscape Folder | Microsoft PowerPoint - [Pre... | 1:48 PM

TD3505 - Surface Data, Hourly Global, Request Verification - Netscape

File Edit View Go Communicator Help

Back Forward Reload Home Search Netscape Print Security Shop Stop

Bookmarks Location: <http://cdo.ncdc.noaa.gov/cgi-bin/cdo/cdodev.pl> What's Related

[NCDC](#) / [Climate](#) / [Get/View](#) / [NNDC CDO](#) / [Search](#) / [Help](#)

NNDC CLIMATE DATA ONLINE

TD3505 - Surface Data, Hourly Global, Request Verification

Your TD3505 - Surface Data, Hourly Global request - CDD00000382 has been submitted for processing.
You will be notified by email at Neal.Lott@noaa.gov when processing has completed for your request.

NOTICE! Click on the following URL to access your files:
<http://cdo.ncdc.noaa.gov/prod/cdohtml/CDD590515234490.html>

*This page was dynamically generated on Thu Dec 27 13:49:48 EST 2001 by
<http://cdo.ncdc.noaa.gov/cgi-bin/cdo/cdodev.pl>*

Document: Done

Start | TD3505 - Surface Dat... | Inbox - Netscape Folder | Microsoft PowerPoint - [Pre... | 1:49 PM

TD3505 - Surface Data, Hourly Global, Data Access - Netscape

File Edit View Go Communicator Help

Back Forward Reload Home Search Netscape Print Security Shop Stop

Bookmarks Location: <http://cdo.ncdc.noaa.gov/prod/cdohtml/CDD590515234490.html> What's Related

This web page and the data files / web forms listed below will be available for **7 days**, after which they will be deleted from NCDC's web server.

File Contents	Access URL	File Size Estimate (bytes)
TD3505 - Surface Data, Hourly Global - Web Form	http://ftp.ncdc.noaa.gov/pub/upload/S90515234490dat.html	Not available - see email message
TD3505 - Surface Data, Hourly Global - Data File	<p>Note! Name and URL of data file will be determined by final output file size. Only one of the links below will point to your data file. Final email message will also provide the exact link to your data file.</p> <p>http://ftp.ncdc.noaa.gov/pub/upload/S90515234490dat.txt ftp://ftp.ncdc.noaa.gov/pub/upload/S90515234490dat.txt.Z</p>	Not available - see email message
TD3505 - Surface Data, Hourly Global - Inventory	http://ftp.ncdc.noaa.gov/pub/upload/S90515234490inv.txt	Not available - see email message
Station List	http://ftp.ncdc.noaa.gov/pub/upload/S90515234490stn.txt	545
TD3505 - Surface Data, Hourly Global format documentation	http://ftp.ncdc.noaa.gov/pub/upload/S90515234490doc.txt	Not available - see email message

Notes:
 *File sizes shown are calculated estimates, and in certain cases may differ significantly from actual file sizes.

Document: Done

Start | TD3505 - Surface Dat... | Inbox - Netscape Folder | Microsoft PowerPoint - [Pre... | 1:50 PM

Netscape
 File Edit View Go Communicator Help

Back Forward Reload Home Search Netscape Print Security Shop Stop

Bookmarks Location: <http://ftp.ncdc.noaa.gov/pub/upload/590515234490dat.txt>

AWS	WBAN	YR--MOD	AHRMN	DIR	SPD	GUS	CLG	SKC	L	M	H	VSF	WW	WW	WW	W	TEMP	DEWP	SLP	ALT	STP
837430	99999	19990101	1800	170	5	***	118	BKN	1	3	1	12.5	**	**	**	*	83	74	1007.7	*****	*****
837430	99999	19990102	1200	130	3	***	118	OVC	5	3	7	5.6	10	**	**	2	80	78	1007.7	*****	*****
837430	99999	19990103	1200	020	2	***	722	SCT	5	0	1	2.5	05	**	**	1	81	74	1008.8	*****	*****
837430	99999	19990103	1800	160	17	***	722	SCT	1	0	0	12.5	**	**	**	*	84	73	1007.7	*****	*****
837430	99999	19990104	1200	010	3	***	722	BKN	5	0	1	12.5	**	**	**	*	82	73	1010.1	*****	*****
837430	99999	19990104	1800	170	14	***	722	BKN	1	0	1	12.5	**	**	**	*	82	72	1007.5	*****	*****
837430	99999	19990105	1200	330	7	***	722	BKN	5	0	1	12.5	**	**	**	*	82	74	1006.2	*****	*****
837430	99999	19990105	1800	170	11	***	722	BKN	2	0	1	12.5	**	**	**	*	86	75	1004.1	*****	*****
837430	99999	19990106	1200	***	0	***	118	BKN	5	3	1	7.5	05	**	**	2	83	75	1007.7	*****	*****
837430	99999	19990106	1800	290	10	***	118	OVC	9	6	3	6.2	95	**	**	9	79	76	1007.8	*****	*****
837430	99999	19990107	1200	040	5	***	118	BKN	5	3	0	3.8	10	**	**	5	80	74	1011.8	*****	*****
837430	99999	19990107	1800	***	0	***	118	BKN	5	3	1	2.5	60	**	**	2	84	76	1010.8	*****	*****
837430	99999	19990108	1200	180	5	***	722	SCT	5	0	1	7.5	05	**	**	2	82	74	1011.9	*****	*****
837430	99999	19990108	1800	170	15	***	722	BKN	1	0	1	12.5	**	**	**	*	83	74	1009.2	*****	*****
837430	99999	19990109	1200	***	0	***	722	SCT	1	0	0	12.5	**	**	**	*	82	74	1012.9	*****	*****
837430	99999	19990109	1800	190	13	***	722	SCT	5	0	0	12.5	**	**	**	*	84	74	1011.8	*****	*****
837430	99999	19990111	1200	030	3	***	722	SCT	1	0	0	9.4	05	**	**	0	82	73	1015.0	*****	*****
837430	99999	19990111	1800	160	14	***	722	SCT	1	0	0	12.5	**	**	**	*	82	73	1012.8	*****	*****
837430	99999	19990112	1200	010	5	***	722	SCT	1	0	0	12.5	**	**	**	*	82	69	1014.6	*****	*****
837430	99999	19990112	1800	160	14	***	722	SCT	1	0	0	12.5	**	**	**	*	84	70	1013.0	*****	*****
837430	99999	19990113	1200	040	5	***	722	BKN	5	0	1	6.2	05	**	**	1	82	72	1014.5	*****	*****
837430	99999	19990113	1800	150	13	***	118	BKN	1	6	0	12.5	**	**	**	*	84	71	1014.4	*****	*****
837430	99999	19990114	1200	130	8	***	118	BKN	5	3	0	7.5	05	**	**	2	81	72	1012.8	*****	*****
837430	99999	19990114	1800	180	16	***	722	SCT	1	0	0	12.5	**	**	**	*	85	74	1008.9	*****	*****
837430	99999	19990115	1200	020	9	***	118	OVC	5	7	1	6.2	21	**	**	6	78	75	1010.0	*****	*****
837430	99999	19990115	1800	***	3	***	118	BKN	5	3	0	12.5	**	**	**	*	87	72	1007.4	*****	*****
837430	99999	19990116	1200	030	2	***	722	SCT	5	3	0	12.5	**	**	**	*	83	71	1012.2	*****	*****
837430	99999	19990116	1800	200	14	***	118	OVC	3	4	4	9.4	95	**	**	2	82	74	1011.8	*****	*****
837430	99999	19990117	1200	140	6	***	722	SCT	5	0	1	9.4	**	**	**	*	83	73	1015.6	*****	*****

TD3505 Climatic Data for Brazil - Netscape

File Edit View Go Communicator Help

Back Forward Reload Home Search Netscape Print Security Shop Stop

Bookmarks Location: <http://cdo.ncdc.noaa.gov/plclimdev/plsql/cdomain.selectdateelem> What's Related

[NCDC](#) / [Climate](#) / [GetView](#) / [NNDC CDO](#) / [Search](#) / [Help](#)

NNDC CLIMATE DATA ONLINE

Surface Data, Hourly Global (TD3505)
for Brazil - 1 stations.

All Data Elements

- Cloud Ceiling
- Cloud Data, General
- Clouds Below Station
- Clouds, Layer Data (Metar)
- Clouds, Layer Data (Synoptic)
- Dew Point
- Ground Surface Condition and Temperature
- Hail Data
- Ice Accretion, Platform

Continue Clear Selections Previous Page New Search

*This page was dynamically generated on 27 Dec 2001 @ 13:57:01 Eastern time by
<http://cdo.ncdc.noaa.gov/plclimdev/plsql/cdomain.selectdateelem>*

Document: Done

Start TD3505 Climatic Data... Inbox - Netscape Folder Microsoft PowerPoint - [Pre...] 1:56 PM

TD3505 Climatic Data for Brazil - Netscape

File Edit View Go Communicator Help

Back Forward Reload Home Search Netscape Print Security Shop Stop

Bookmarks Location: <http://cdo.ncdc.noaa.gov/plclimdev/plsql/cdomain.dateoutmode> What's Related

NNDC CLIMATE DATA ONLINE

Surface Data, Hourly Global (TD3505) for Brazil - 1 stations.

Select Date Restrictions:

Use Date Range <== OR ==>
 Use Selected Dates *

	Year	Month	Day	Hour
From	1999	01	01	00
To	1999	01	31	23

Select Only Obs. on the Hour

Year	Month	Day	Hour
1999	12	31	23
1998	11	30	22
1997	10	29	21
1996	09	28	20
1995	08	27	19
	07	26	18
	06	25	17
	05	24	16

Select Output Format:

Delimited, with station name

Select Output Format Delimiter:
(only if Delimited format selected above)

Comma
Space

Select Output Media:

FTP

Document: Done

Start | TD3505 Climatic Data... | Inbox - Netscape Folder | Microsoft PowerPoint - [Pre...] | 1:57 PM

Netscape

File Edit View Go Communicator Help

Back Forward Reload Home Search Netscape Print Security Shop Stop

Bookmarks Location: <http://ftp.ncdc.noaa.gov/pub/upload/837127234496dat.txt> What's Related

IDENTIFICATION				VISIBILITY				TEMP		DEWPT				
Name	USAF	NCDC	Date	HrMn	I	Type	Visby	Q	I	Q	Temp	Q	Dewpt	Q
RIO DE JANEIRO	837430	99999	19990101	1800	4	FM-12	020000	1	N	1	28.2	1	23.3	1
RIO DE JANEIRO	837430	99999	19990102	1200	4	FM-12	009000	1	N	1	26.4	1	25.6	1
RIO DE JANEIRO	837430	99999	19990103	1200	4	FM-12	004000	1	N	1	27.4	1	23.2	1
RIO DE JANEIRO	837430	99999	19990103	1800	4	FM-12	020000	1	N	1	29.0	1	22.9	1
RIO DE JANEIRO	837430	99999	19990104	1200	4	FM-12	020000	1	N	1	27.6	1	22.9	1
RIO DE JANEIRO	837430	99999	19990104	1800	4	FM-12	020000	1	N	1	27.6	1	22.3	1
RIO DE JANEIRO	837430	99999	19990105	1200	4	FM-12	020000	1	N	1	27.6	1	23.5	1
RIO DE JANEIRO	837430	99999	19990105	1800	4	FM-12	020000	1	N	1	30.2	1	23.9	1
RIO DE JANEIRO	837430	99999	19990106	1200	4	FM-12	012000	1	N	1	28.2	1	24.1	1
RIO DE JANEIRO	837430	99999	19990106	1800	4	FM-12	010000	1	N	1	26.3	1	24.2	1
RIO DE JANEIRO	837430	99999	19990107	1200	4	FM-12	006000	1	N	1	26.6	1	23.3	1
RIO DE JANEIRO	837430	99999	19990107	1800	4	FM-12	004000	1	N	1	29.0	1	24.7	1
RIO DE JANEIRO	837430	99999	19990108	1200	4	FM-12	012000	1	N	1	27.6	1	23.5	1
RIO DE JANEIRO	837430	99999	19990108	1800	4	FM-12	020000	1	N	1	28.2	1	23.5	1
RIO DE JANEIRO	837430	99999	19990109	1200	4	FM-12	020000	1	N	1	28.0	1	23.3	1
RIO DE JANEIRO	837430	99999	19990109	1800	4	FM-12	020000	1	N	1	29.0	1	23.5	1
RIO DE JANEIRO	837430	99999	19990111	1200	4	FM-12	015000	1	N	1	27.8	1	22.8	1
RIO DE JANEIRO	837430	99999	19990111	1800	4	FM-12	020000	1	N	1	28.0	1	22.9	1
RIO DE JANEIRO	837430	99999	19990112	1200	4	FM-12	020000	1	N	1	27.7	1	20.7	1
RIO DE JANEIRO	837430	99999	19990112	1800	4	FM-12	020000	1	N	1	29.0	1	21.0	1
RIO DE JANEIRO	837430	99999	19990113	1200	4	FM-12	010000	1	N	1	27.8	1	22.2	1
RIO DE JANEIRO	837430	99999	19990113	1800	4	FM-12	020000	1	N	1	28.8	1	21.6	1
RIO DE JANEIRO	837430	99999	19990114	1200	4	FM-12	012000	1	N	1	27.2	1	22.1	1
RIO DE JANEIRO	837430	99999	19990114	1800	4	FM-12	020000	1	N	1	29.2	1	23.2	1
RIO DE JANEIRO	837430	99999	19990115	1200	4	FM-12	010000	1	N	1	25.4	1	23.7	1
RIO DE JANEIRO	837430	99999	19990115	1800	4	FM-12	020000	1	N	1	30.4	1	22.0	1
RIO DE JANEIRO	837430	99999	19990116	1200	4	FM-12	020000	1	N	1	28.4	1	21.9	1
RIO DE JANEIRO	837430	99999	19990116	1800	4	FM-12	015000	1	N	1	27.6	1	23.2	1
RIO DE JANEIRO	837430	99999	19990117	1200	4	FM-12	015000	1	N	1	28.6	1	22.8	1

Document: Done

Start Netscape Inbox - Netscape Folder Microsoft PowerPoint - [Pre...] 1:59 PM