

SAENGER

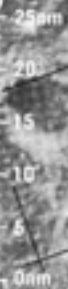
22 + 00

104E

4N

*Flamy  
002  
Mich 24 km*

23 + 00



108E

4N

108E

*Gene  
Ormus*

104E  
NORTH  
1:1,000,000

1

ORBIT MONITOR CHART  
APOLLO 17  
DECEMBER 6, 1972  
SKB 32100123-384  
S/N 1002  
1st Edition September 8, 1972



96E

8N

DREYER

2

20+00

ERRO

100E

12N

4N

21+00

100E

8N

12

3

1 Mrs Citron Usso  
on descent to  
TANUS LUNAR...

Gene Lemmon  
March XVII

MOISEEV



JANSKY

18+00

92E

8N

19+00

IBN YUNUS

3  
92E

This Chart is  
12N on ascent  
to Tranquility

Gen. Cernan  
AS16 X11

12

3

12N

98E

4

NEPER C

84E

12N

16+00

NEPER

*THIS CHART USED  
ON D-3 ON  
TO TADJIKISTAN*

*Gen. Lemay  
Arabs Xull*

25nm

20

15

10

5

0nm

17+00

88E

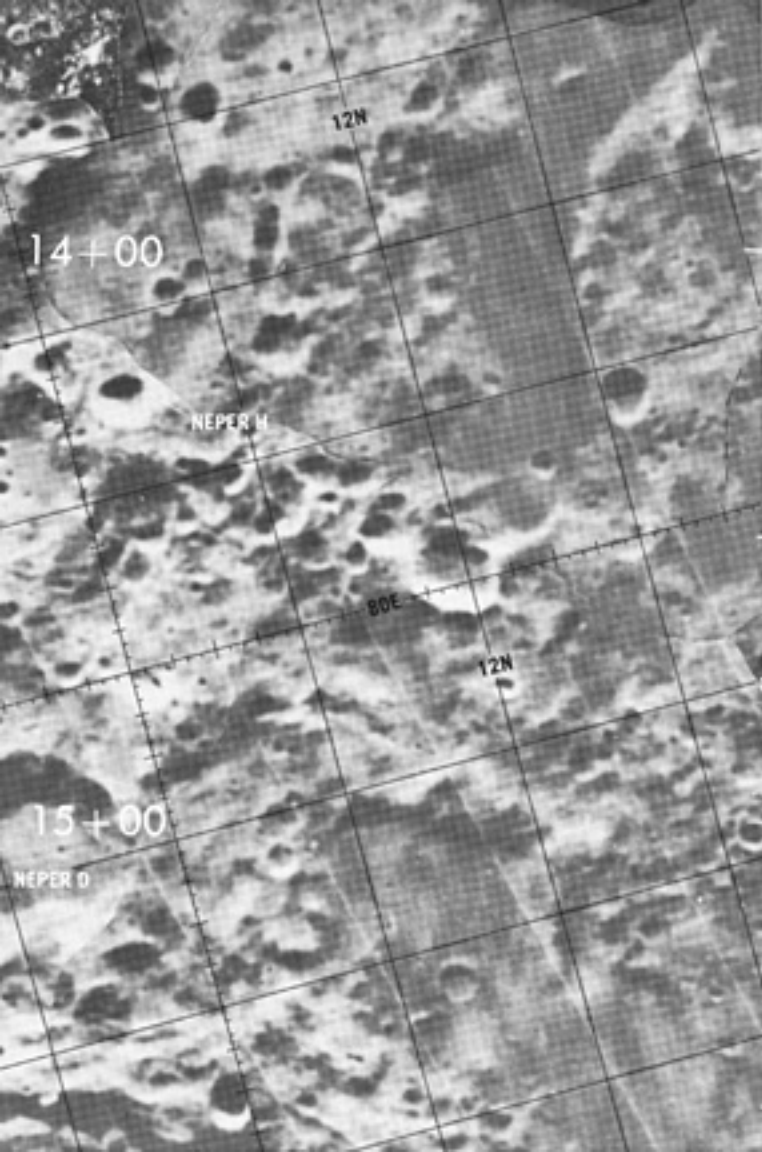
12

12N

3

GODDARD

8N



14+00

12N

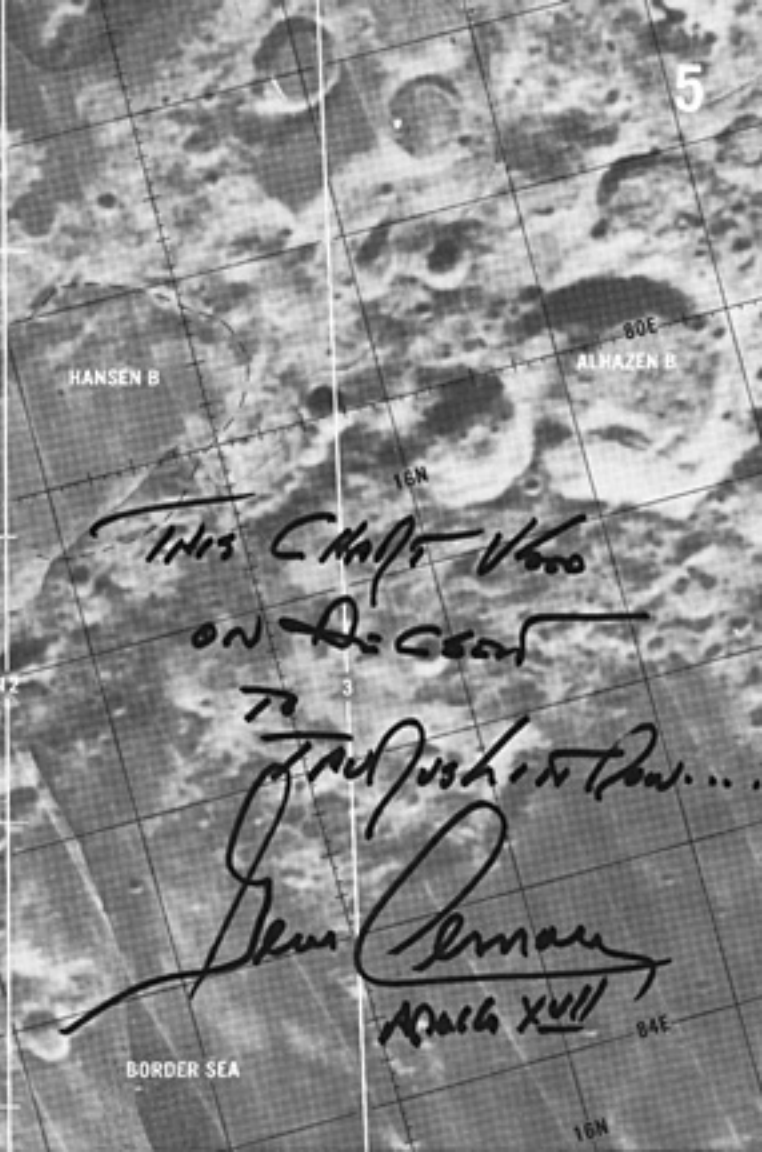
NEPER H

80E

12N

15+00

NEPER D



5

HANSEN B

ALHAZEN B

16N

THIS CRATER VISIBLE  
ON DISC

→  
Faintly visible on disc...

Gene Lorenz  
March 1961

BORDER SEA

84E

16N



70E

12

72E

6

12+00

ALHAZEN

*This Chart Used  
on Desert*

16N

*to Paul Schmitt...*

72E

HANSEN

*New Orleans  
April 1966*

12N

CONDORCET O

ALHAZEN A



13+00

HANSEN A

76E

CONDORCET R

12

16N

CONDORCET S

76E

CAPE  
AGARUM

66E

16N

18N

NORTH  
1:650,000

7

CONDORCET W



11+00

14N

68E

12

16N

*This chart shows  
on a scale  
to 1:100,000...*

*John Raman  
Avalis Hill*

18N

SCALE CHANGE AT 70°E

70E

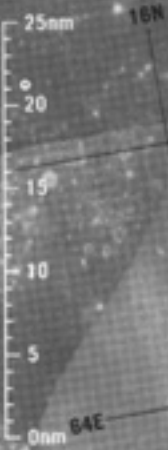
70E

NORTH  
1:1,000,000

20N

9+00

8



THIS CHART USED  
 ON DESCON.  
 TO TADJUS LIAISON...

Ben Cernan  
 Apollo 16

10+00

66E



8+00

58E

58E

58E

16N

18N

20N

*THIS CHART USED  
ON DISCS  
TO IMPROVE THE...*

12

*Gen. Cernan*  
*APR 16 1971*

60E

60E

60E

SEA OF CRISES

16N

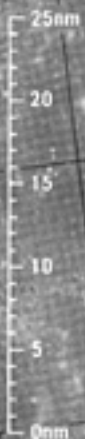
18N

20N

62E

PEIRCE

PEIRCE B



*Indis Citatis V600  
ON Descent  
TO STATUS LINDHOLM...*

*Gene Lemmon  
April 6 XVI*

54E

18N

16N

7+00

56E

18N

16N

20N

56E

5+00

11

18N

20N

TISSERAND D

TISSERAND A

PEIRCE C

*THIS CHART USED  
ON DISCUS  
TO TADUSHIKAWA..*

50E

12

TISSERAND K

CAPE OLIVUM

16N

*J. Cerny  
APOLLO XVII*

TISSERAND B

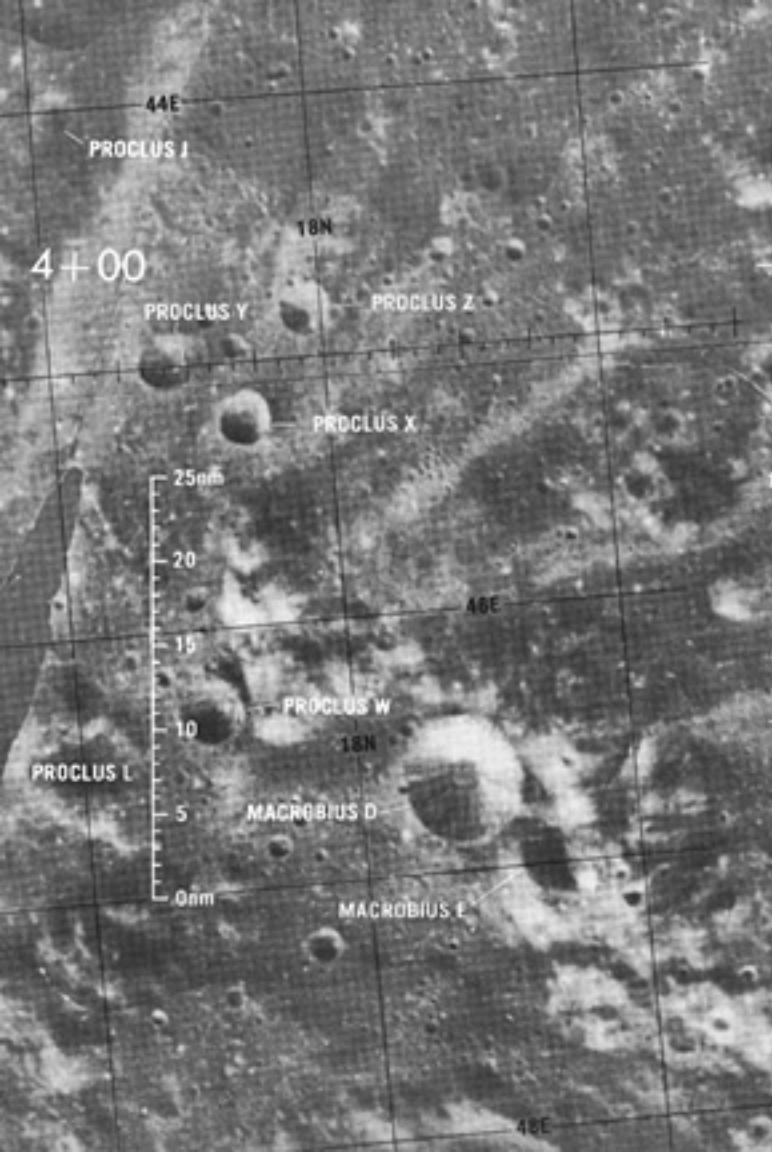
6+00

52E

20N

52E

18N



12

THIS CHART USED  
ON DESCENT  
TO MACROBIUS LIT. POINT...

Gene Cernan  
Apollo 16

MARALDI M

MACROBIUS P

13

40E

40E

J-3

MACROBIUS K

22N

18N

MACROBIUS A

MACROBIUS B

3+00

PROCLUS D

*THIS CHART USED  
ON DESCENT  
TO TRANS HILLOW*

MACROBIUS L

42E

MACROBIUS AA

20N

18N

*James Newman  
Apollo X-VII*

IP J-3

MARALDI

14

MARALDI E

36E

MARALDI F

MARALDI  
(GAMMA)

RÖMER

RÖMER KA

18N

25nm

20

MARALDI N

15

10

5

0nm - 36E

MARALDI A

22N

*THIS CHART U600  
on descent*

*TO JAMES HINTON*

*Gene Cernan  
Apollo XVII*

2+00

RÖMER J

38E

18N

22N



REV 3

DAWES

18N

26E

16

26E

LE MONNIER C

22N

1+00

12

28E

25nm

18N

20N

MOUNT AEGAEUS

VITRUVIUS E

22N

LITTRON I RILLE

LITTRON II RILLE

LITTRON III RILLE

LITTRON IV RILLE

LITTRON V RILLE

LITTRON B

LITTRON VI RILLE

0nm

30E

30E

This Chart Used  
on ASCOM  
to find us here...  
Gen. Cernan  
Apollo 17

17

PLINIUS II RILLE

18N

22E

22E

THIS CHART WAS  
ON ASCENT  
TO 10000 KILOMETERS...

2+00

24E

SEA OF SENEITY

AND XULL

18N

24E

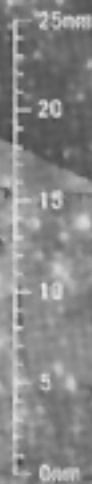
22N



MENELAUS III RILLE

REV 12

MENELAUS I RILLE



3+00

18

NORTH  
1:650,000



18E  
18E  
20N  
22N  
22E  
20E

14th CHASE USED  
ON DESCENT  
TO TANPOKIN RISE...

Gene Lemay  
APR 16 1968

DESILLIGNY

22N