





















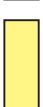



Appendix I Geophysical Log Descriptions (Continued)

EXPLANATION


High-Frequency Cycles

 HFC5	 HFC3b	 HFC2
 HFC4	 HFC3a	 HFC1?

Rock-Fabric Facies

 Peloid grainstone/ packstone	 Mudstone/wackestone	 Sandy pelecypod floatstone/rudstone
 Coral framestone	 Root-mold limestone	 Touching vug pelecypod floatstone/rudstone
 Peloid wackestone/ packstone	 Skeletal grainstone/ packstone	 Sandy pelecypod floatstone/rudstone
 Gastropod floatstone/ rudstone	 Sandy skeletal grainstone/packstone	 Vuggy wackestone packstone
 Conglomerate	 Laminated peloid grainstone/packstone	 Quartz sandstone
 Pedogenic limestone	 Pelecypod floatstone/ rudstone	 Skeletal sandstone

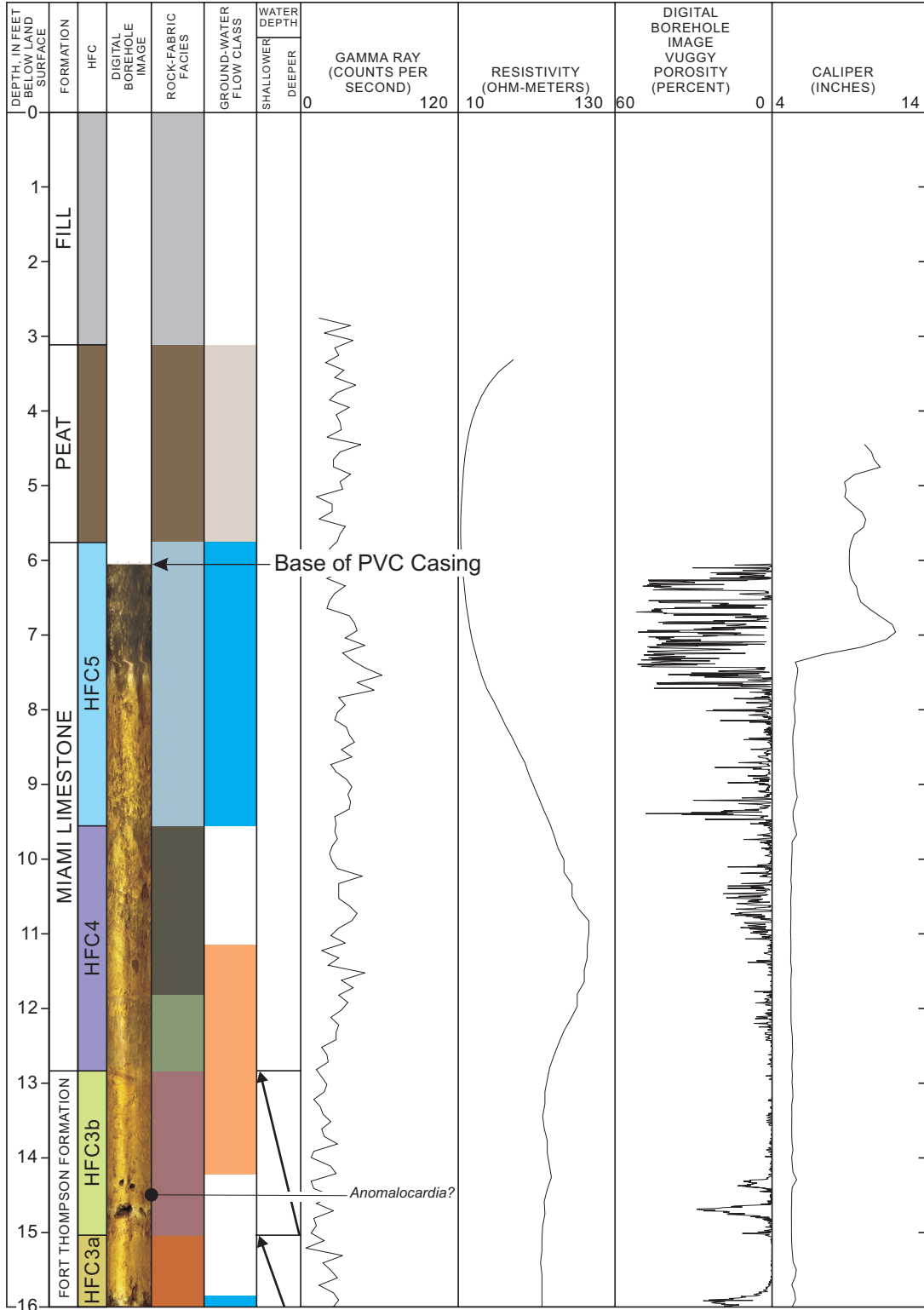
Miscellaneous

 Fill
 Peat
 Marl
 No recovery

Ground-Water Flow Class

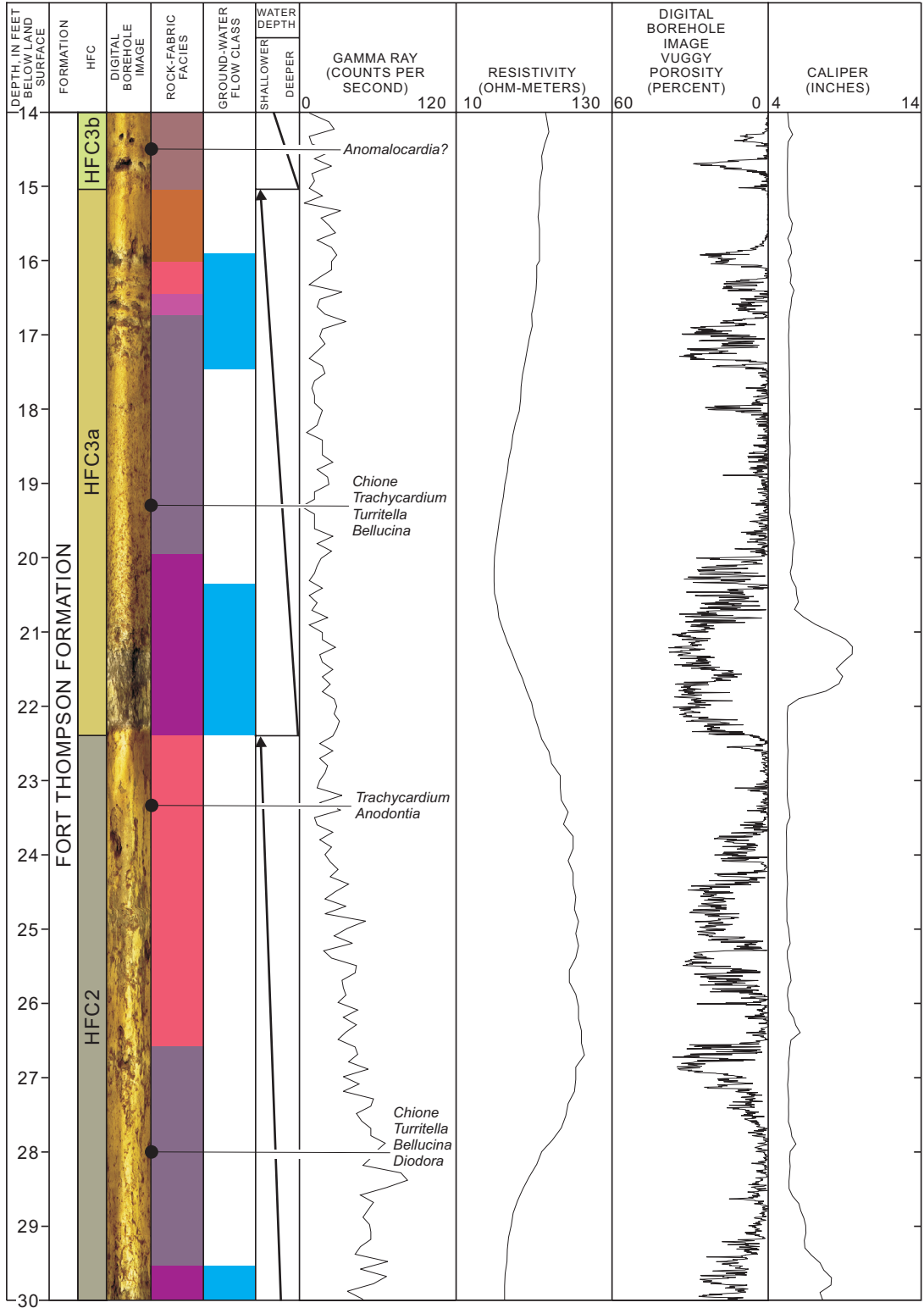
 Low permeability peat, muck, and marl	 Lateral conduit flow zone	 Leaky low permeability zone	 Diffuse flow zone
--	--	--	---

G-3723



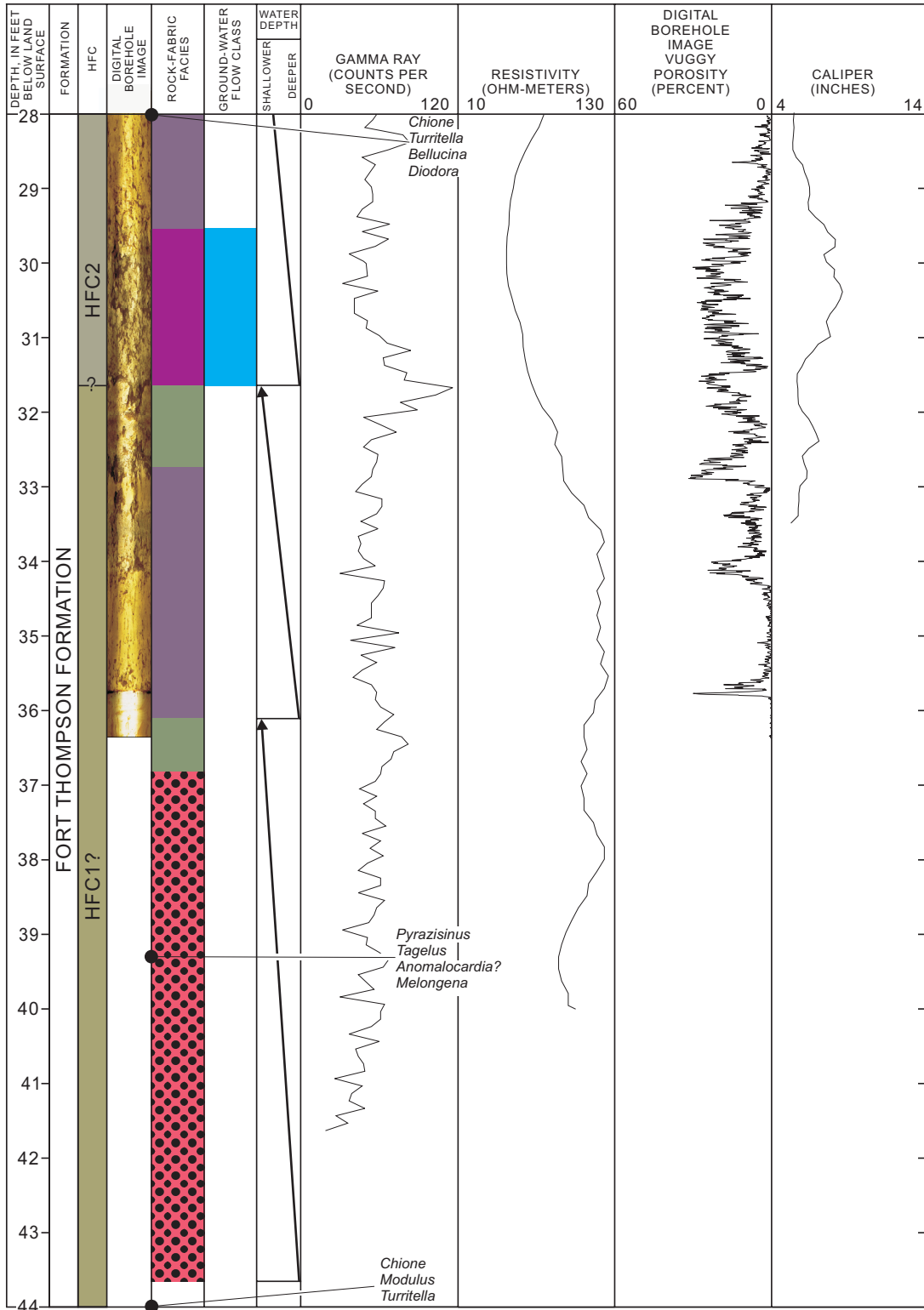
G-3723 (0-16 feet below land surface)

G-3723



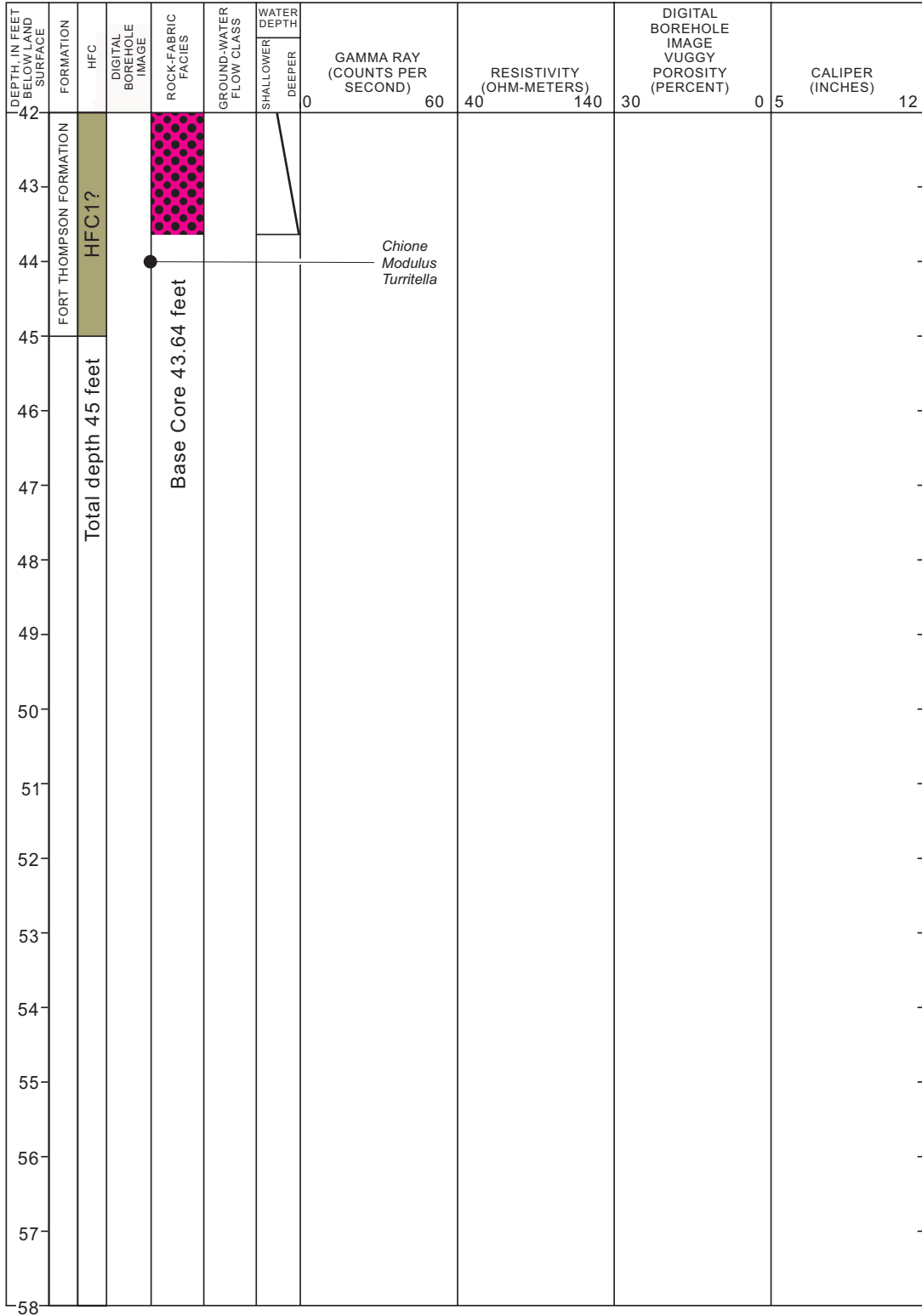
G-3723 (14-30 feet below land surface)

G-3723



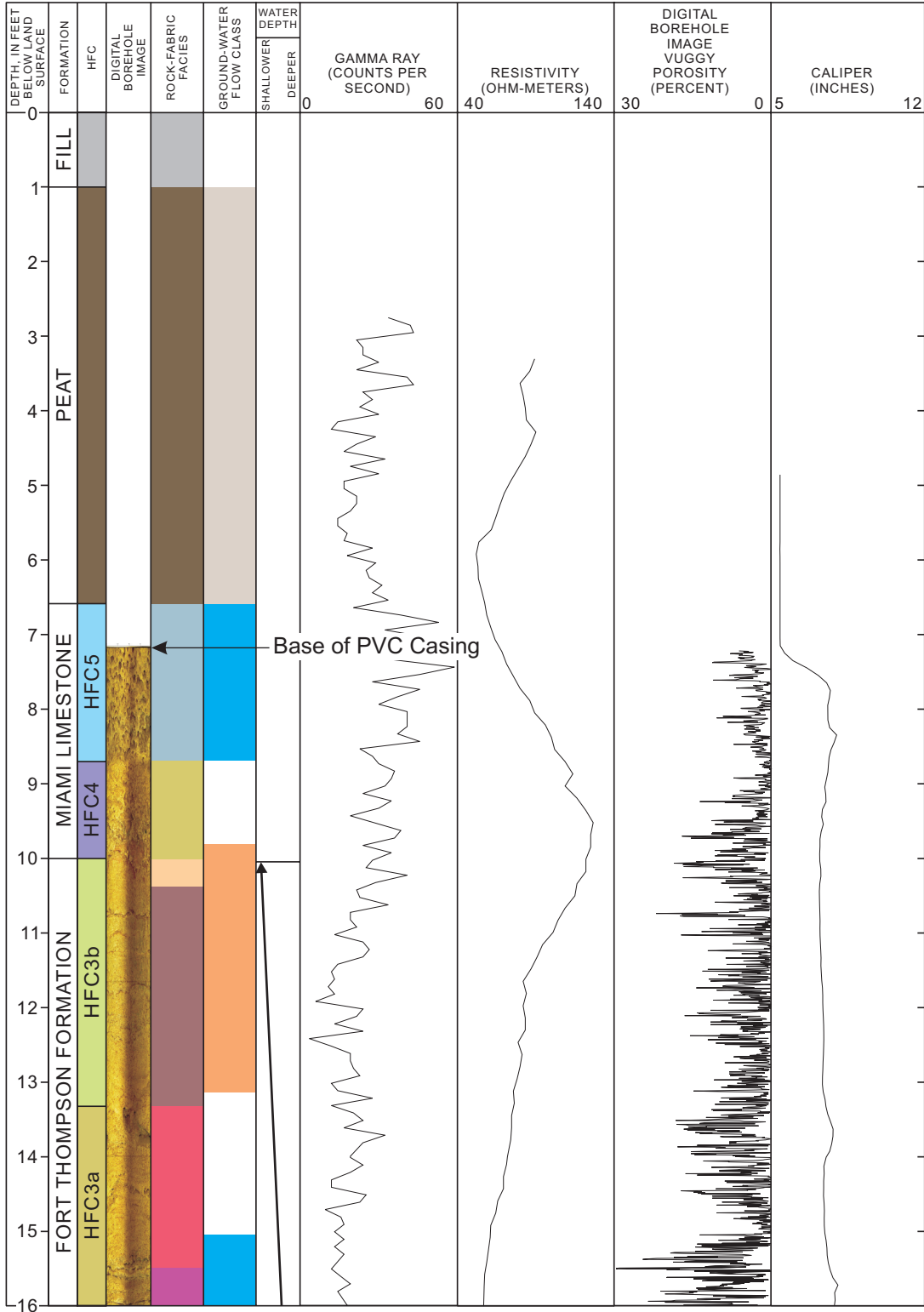
G-3723 (28-44 feet below land surface)

G-3723



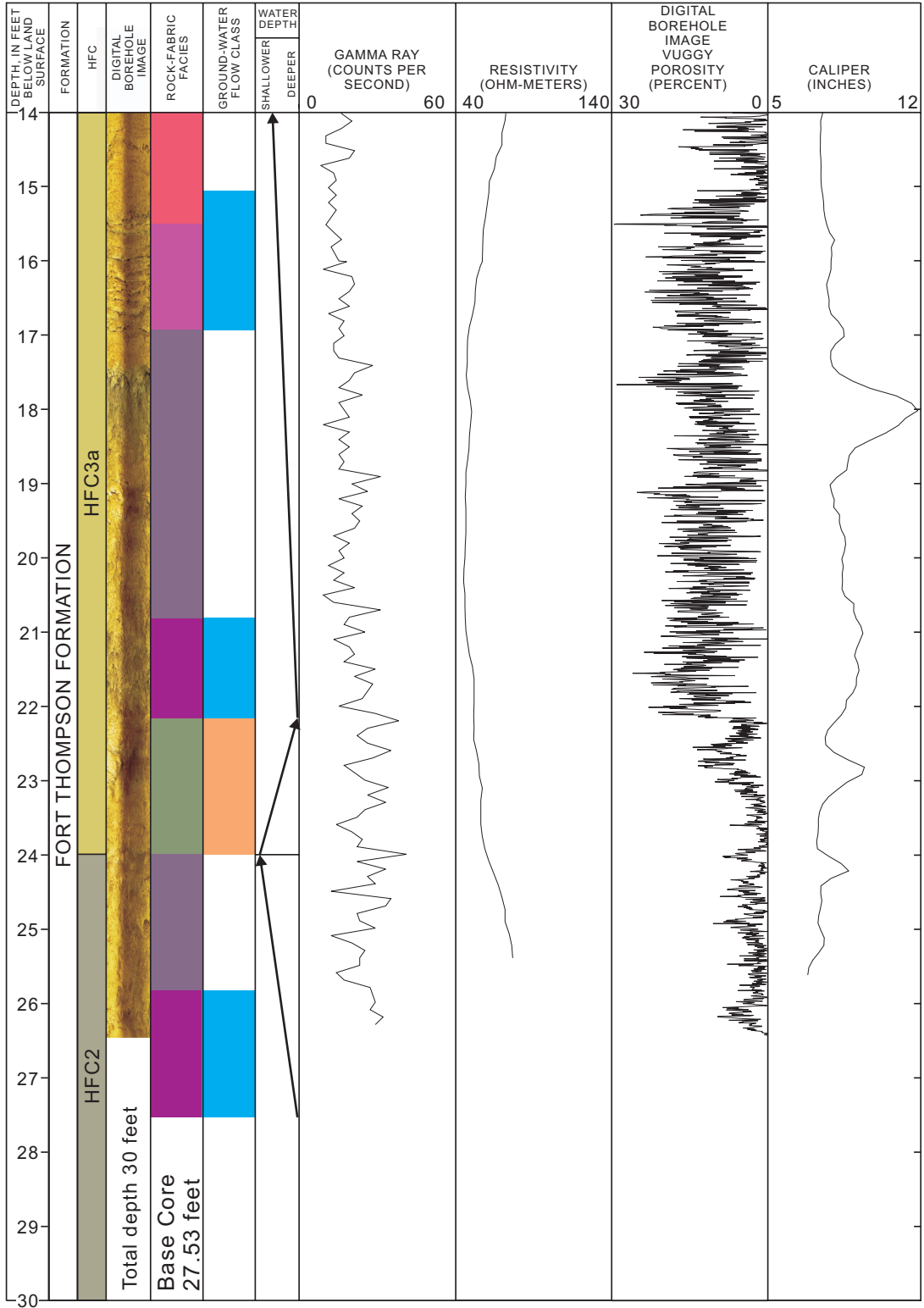
G-3723 (42-58 feet below land surface)

G-3724



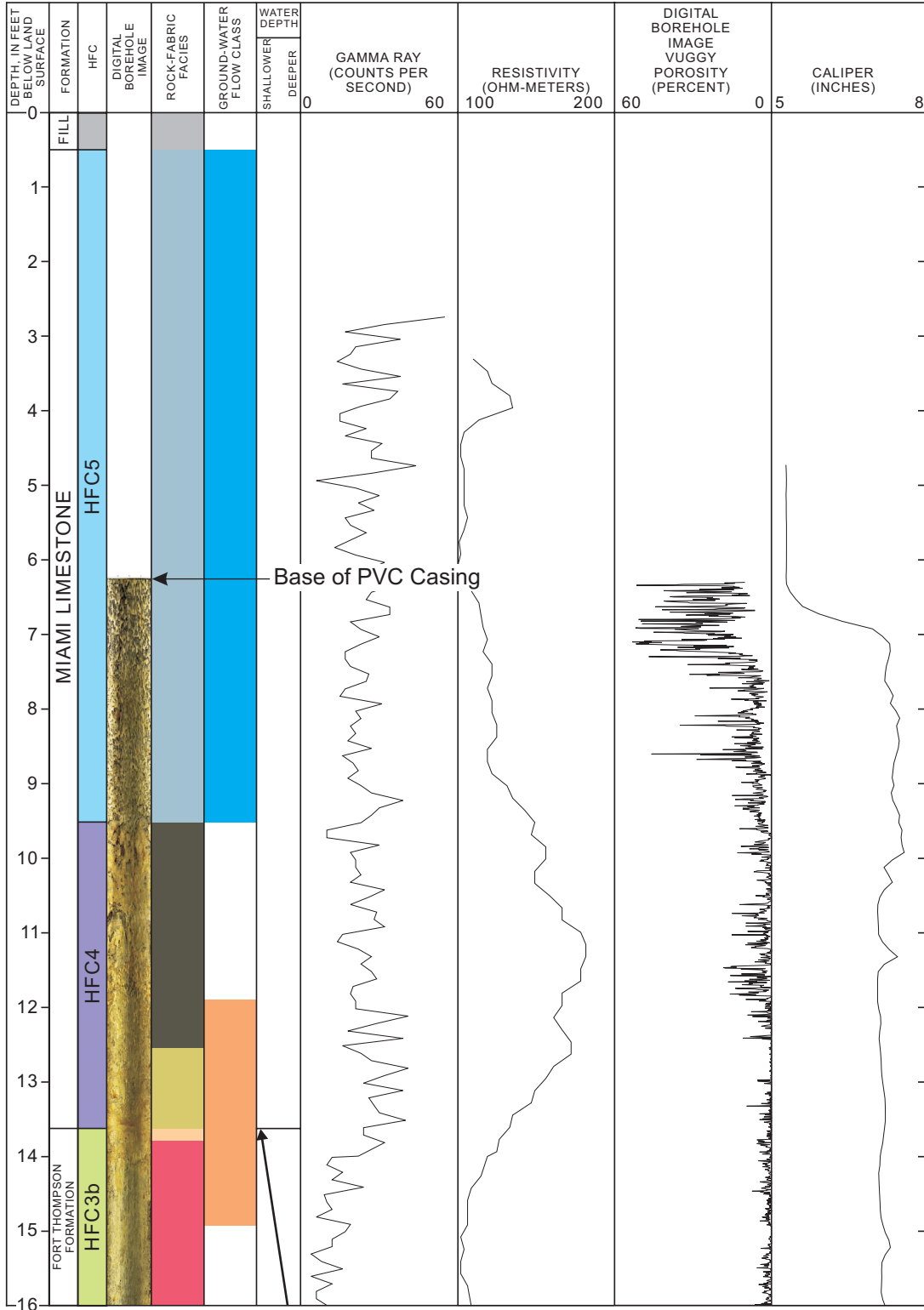
G-3724 (0-16 feet below land surface)

G-3724



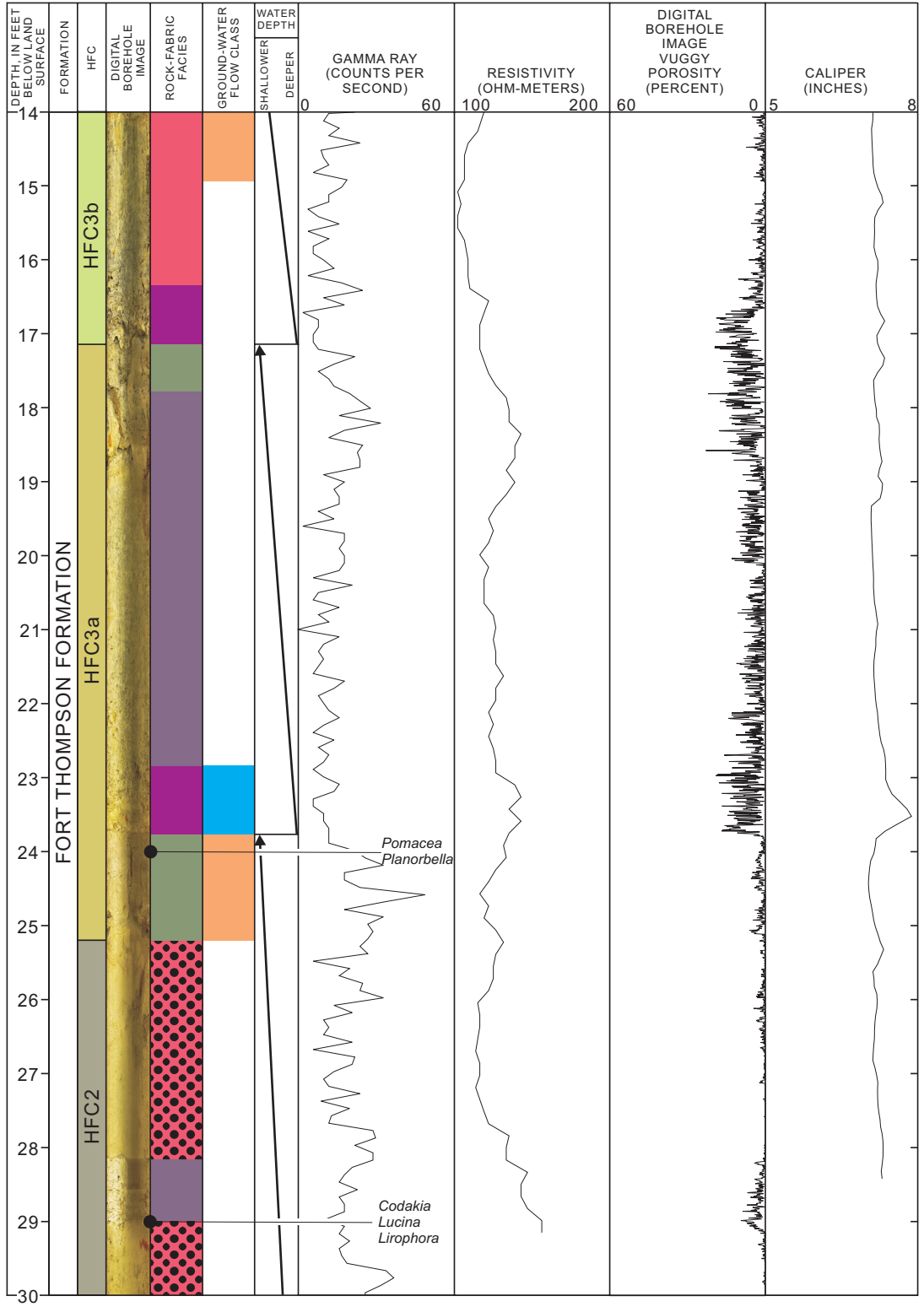
G-3724 (14-30 feet below land surface)

G-3725



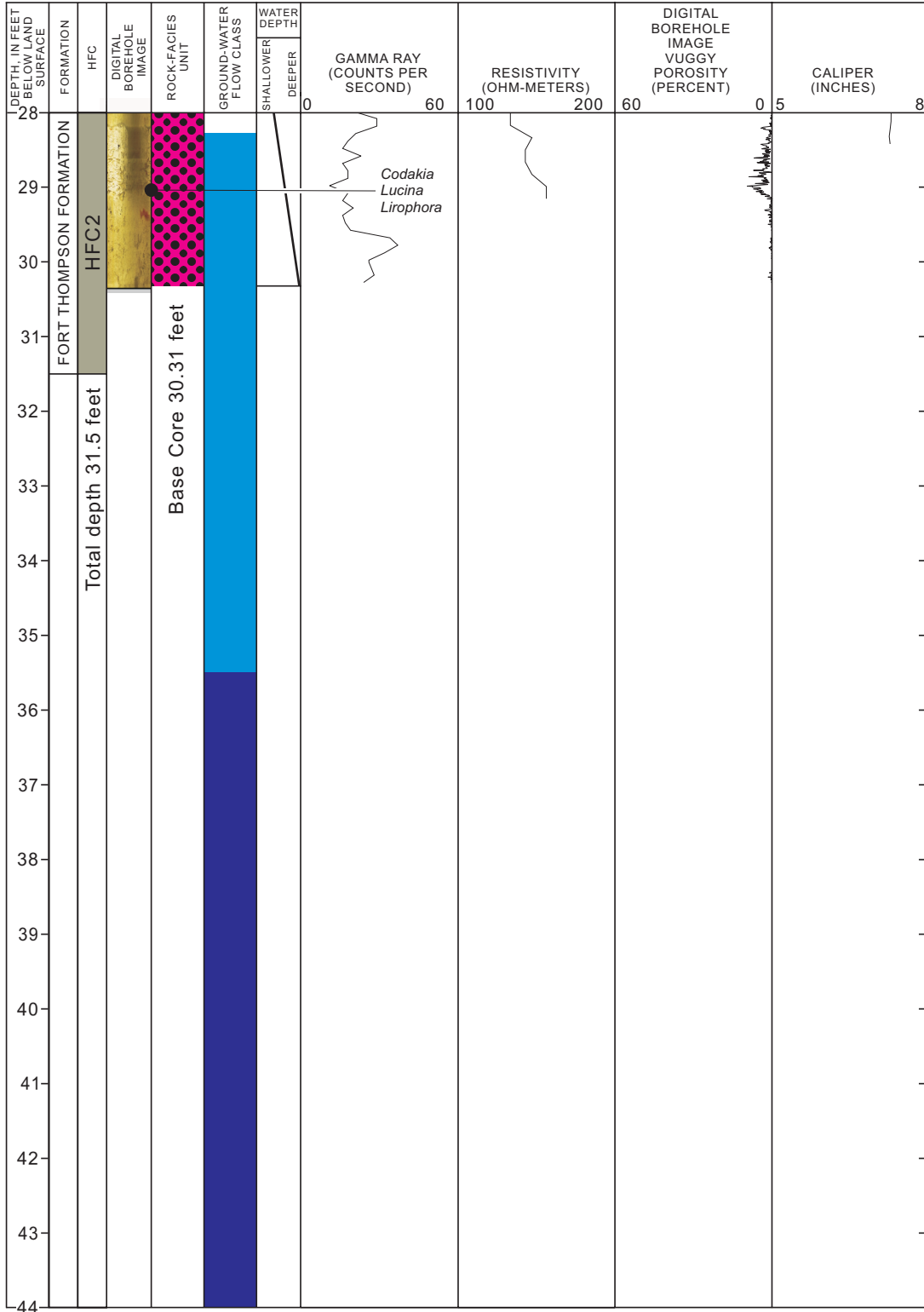
G-3725 (0-16 feet below land surface)

G-3725



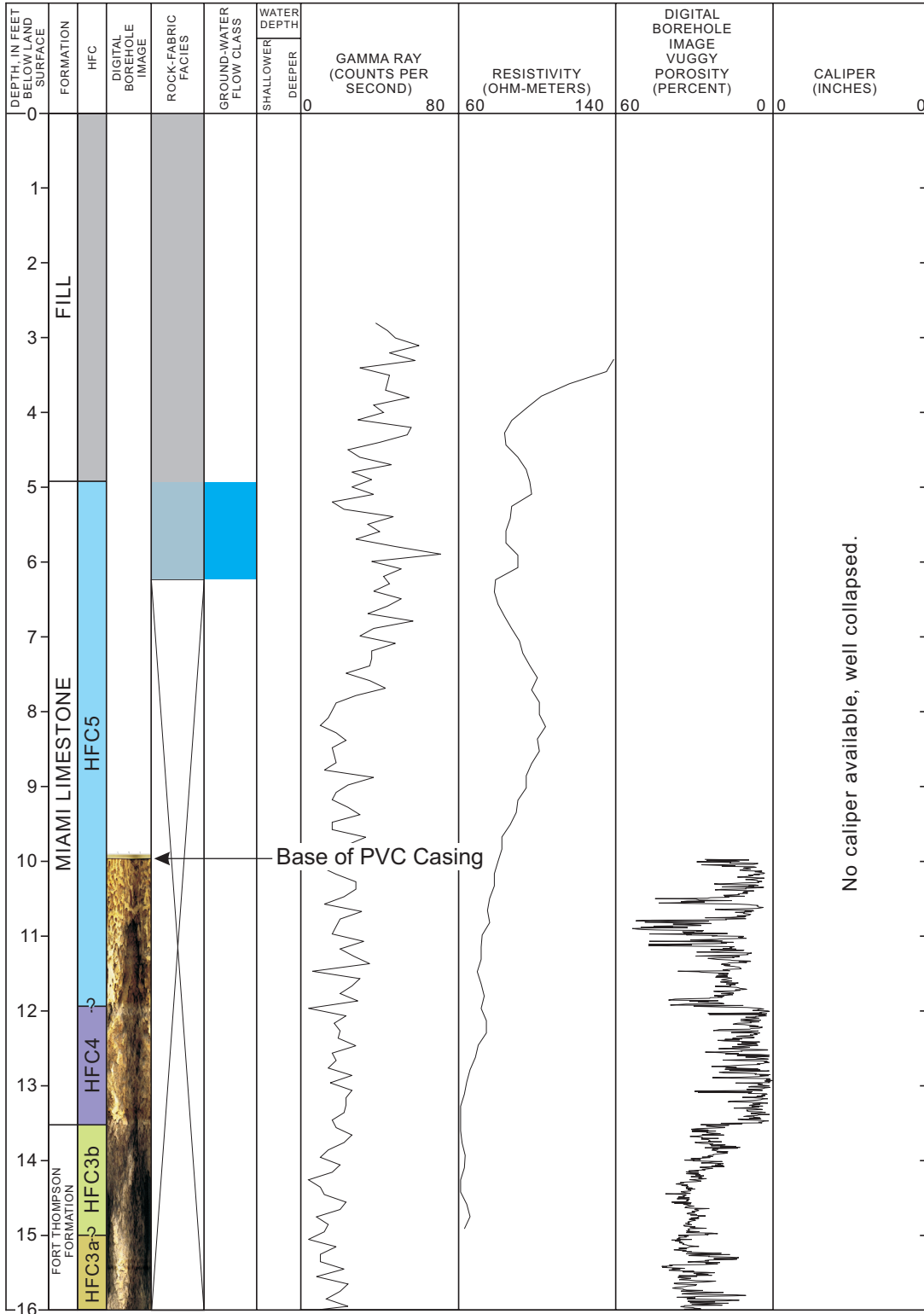
G-3725 (14-30 feet below land surface)

G-3725



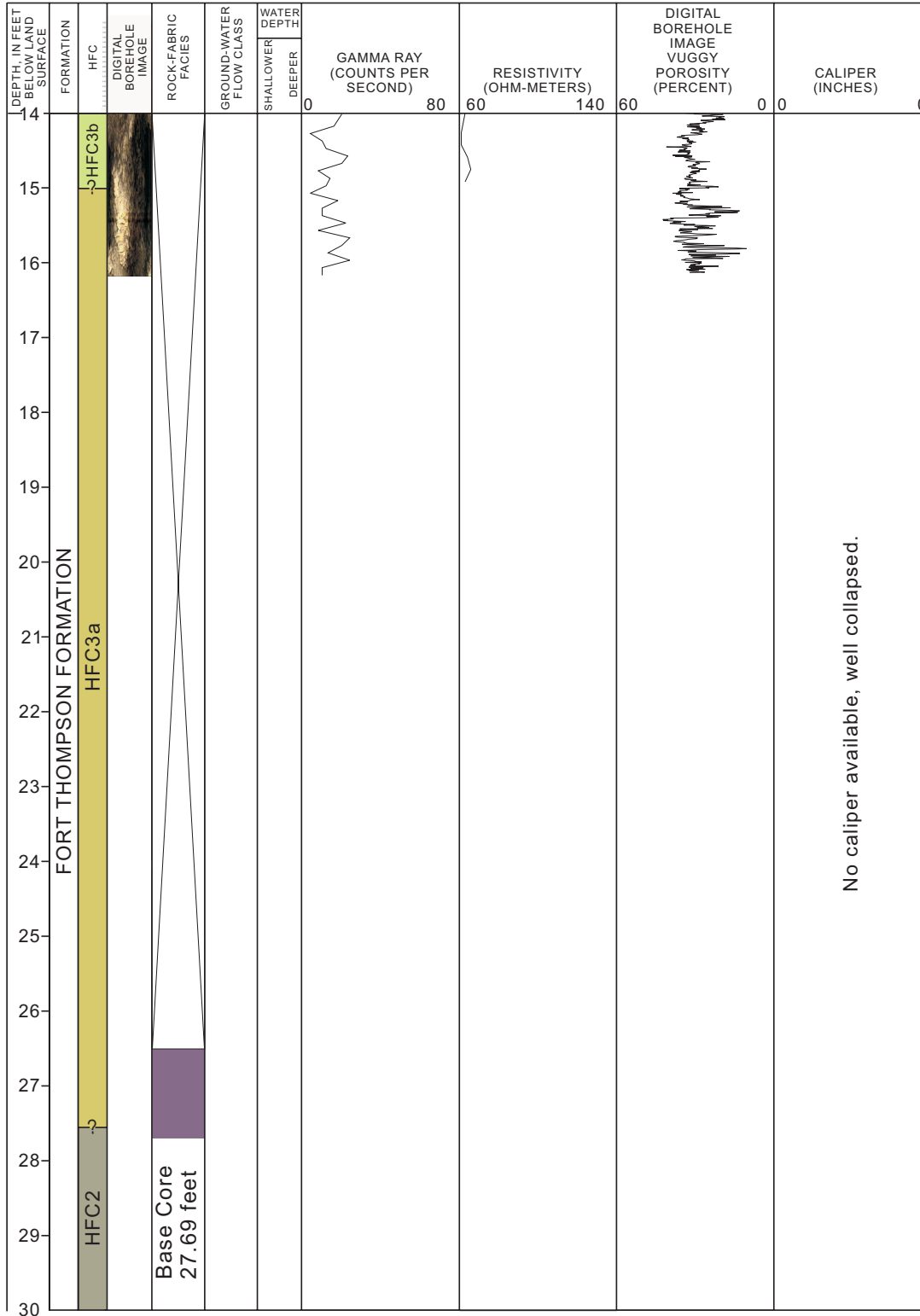
G-3725 (28-44 feet below land surface)

G-3726



G-3726 (0-16 feet below land surface)

G-3726



G-3726 (14-30 feet below land surface)

G-3726

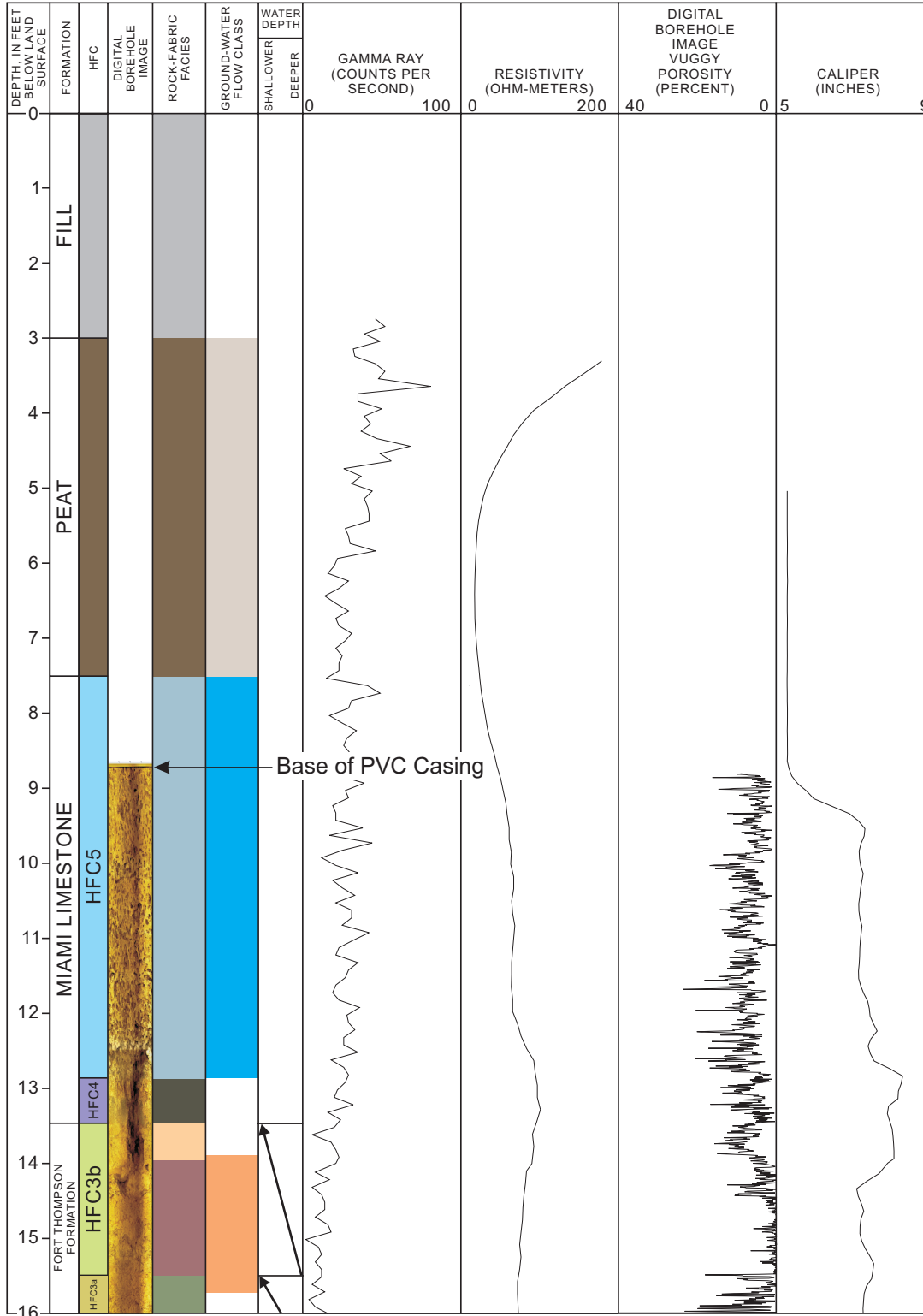
DEPTH IN FEET BELOW LAND SURFACE	FORMATION	HFC	DIGITAL BOREHOLE IMAGE	ROCK-FABRIC FACIES	GROUND-WATER FLOW CLASS	WATER DEPTH		GAMMA RAY (COUNTS PER SECOND)	RESISTIVITY (OHM-METERS)		DIGITAL BOREHOLE IMAGE VUGGY POROSITY (PERCENT)	CALIPER (INCHES)	
						SHALLOWER	DEEPER		60	140			60
28	FORT THOMPSON FORMATION	HFC2					0	80	60	140	60	0	
29													
30													
31													
32													
33													
34													
35													
36													
37													
38													
39													
40													
41													
42													
43													
44													

Total depth 33.0 feet

No caliper available, well collapsed.

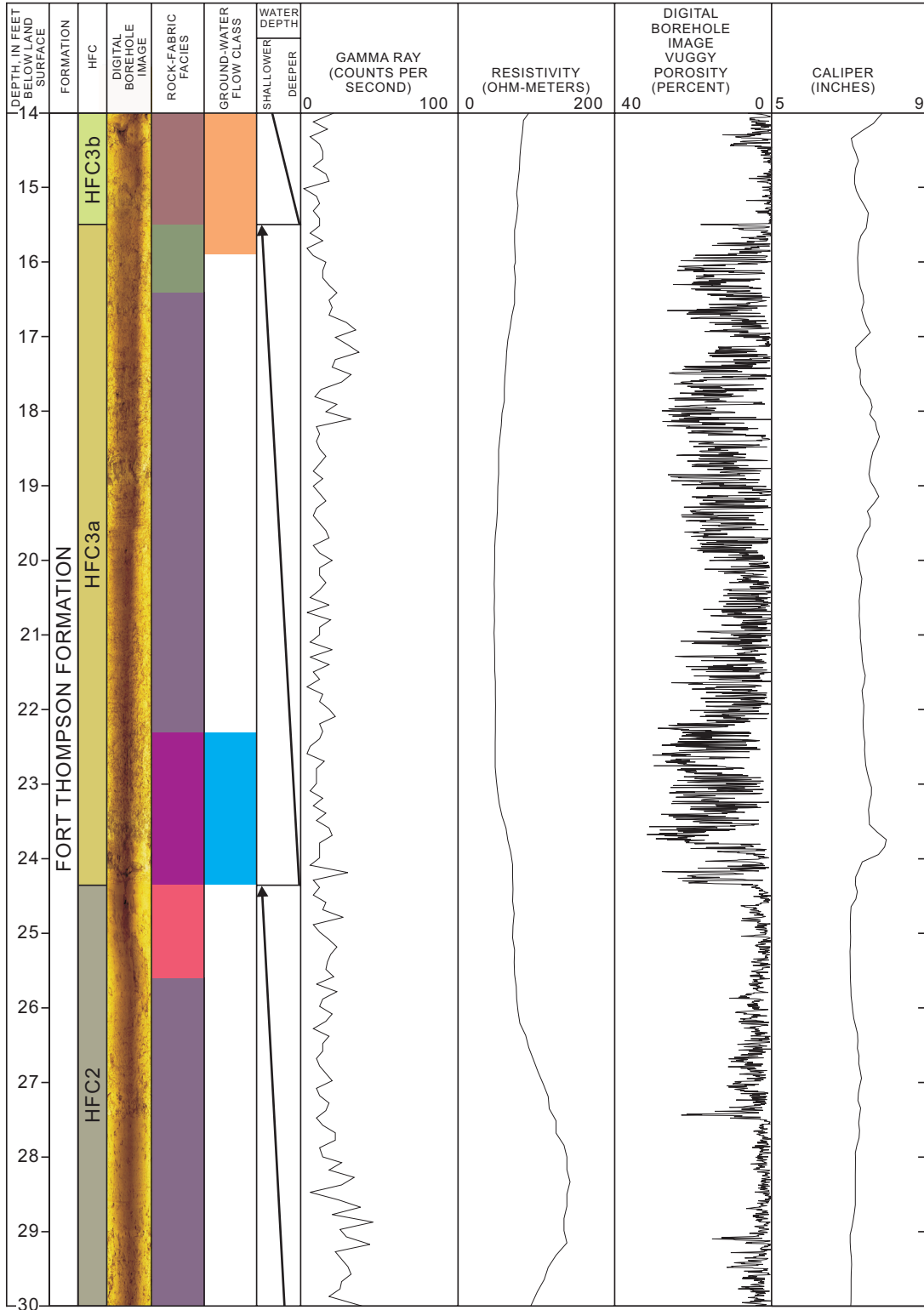
G-3726 (28-44 feet below land surface)

G-3727



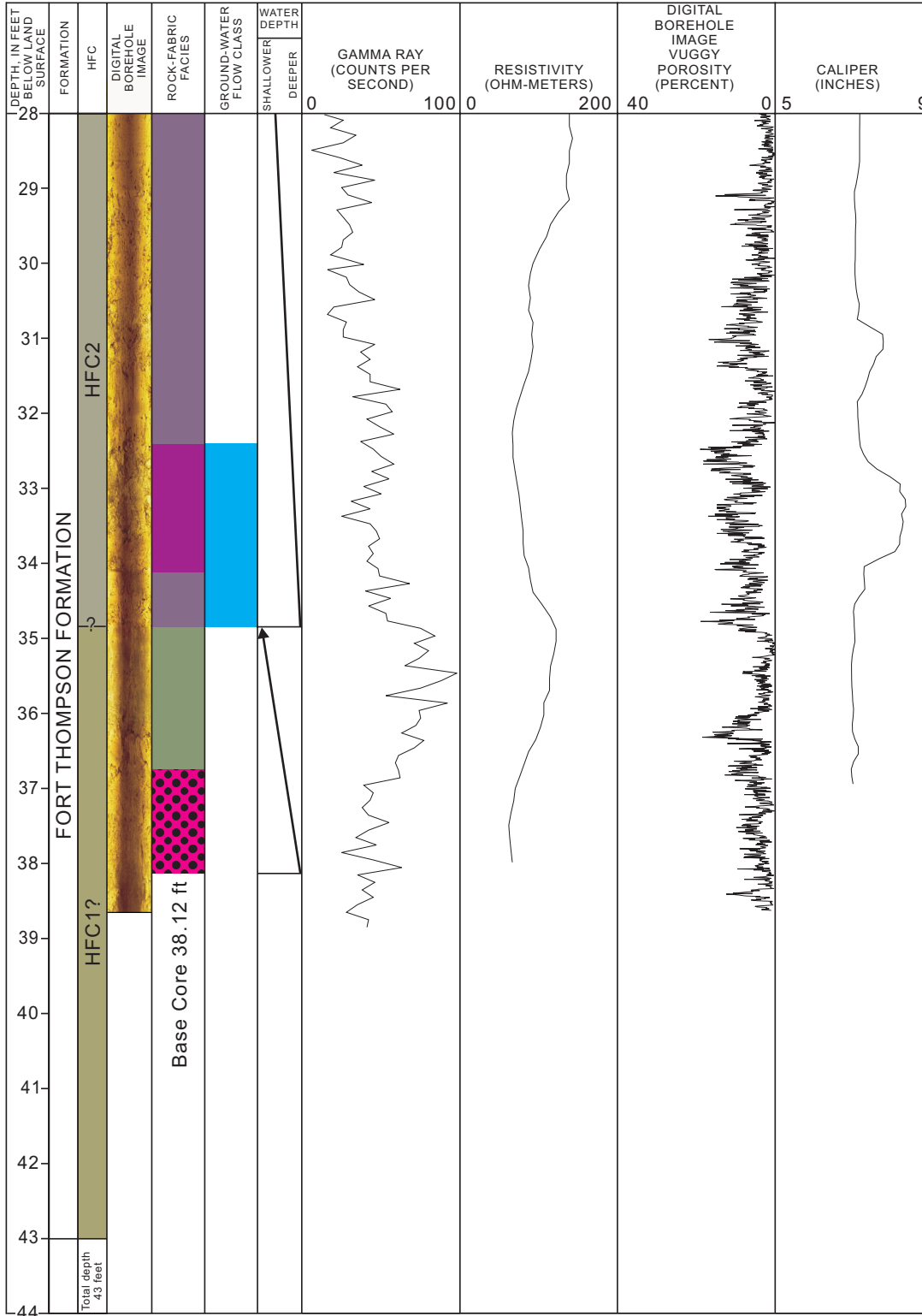
G-3727 (0-16 feet below land surface)

G-3727



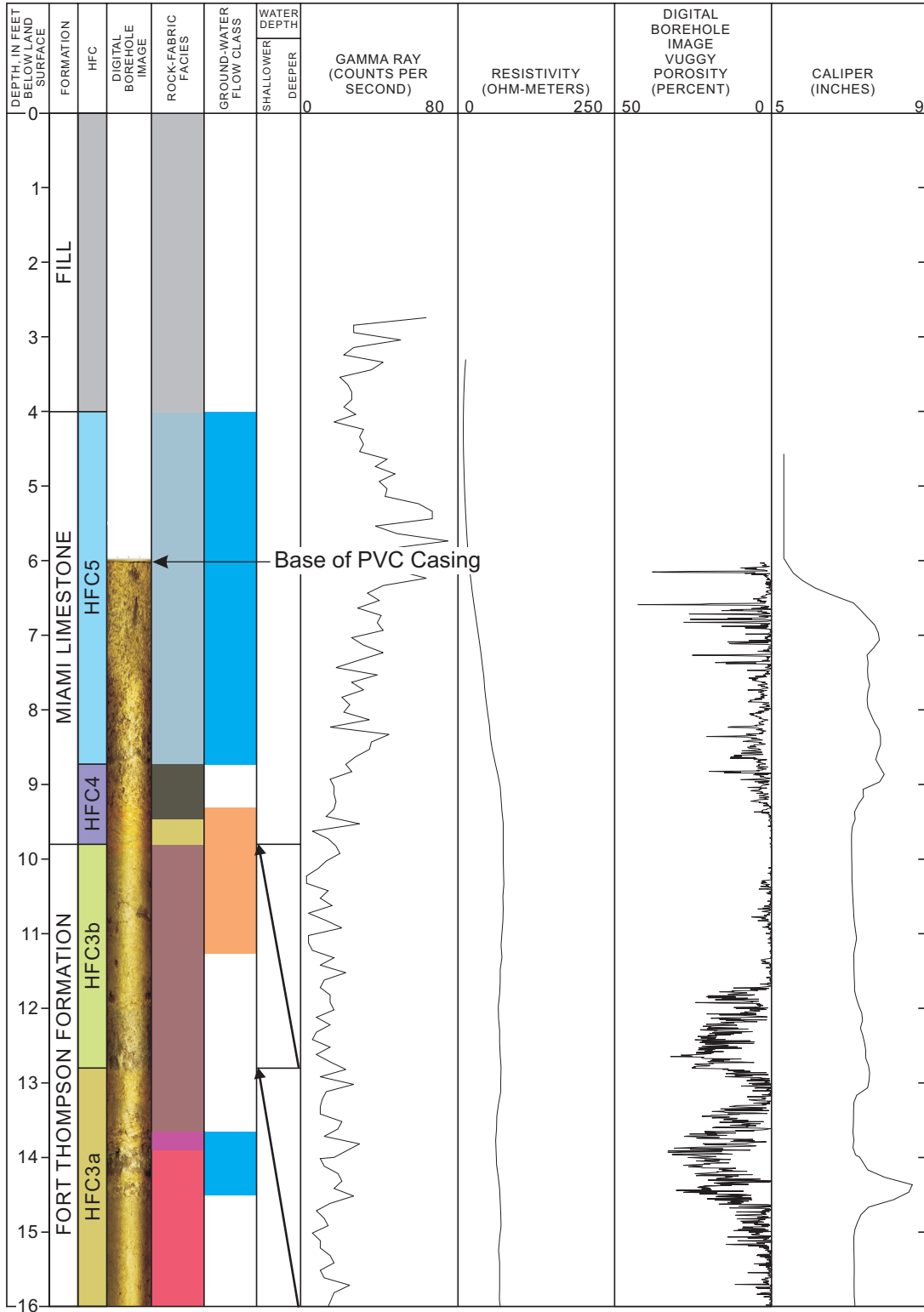
G-3727 (14-30 feet below land surface)

G-3727



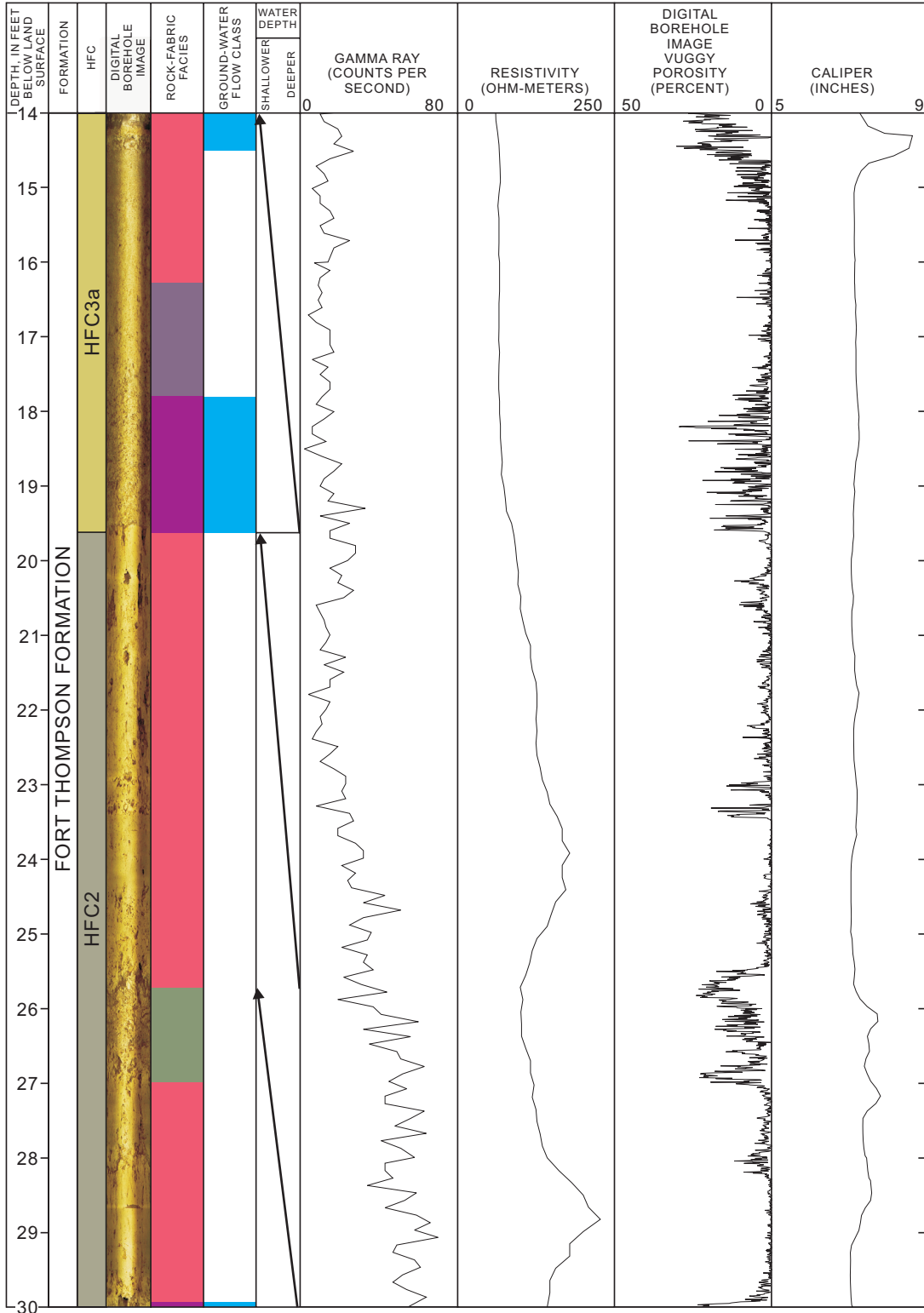
G-3727 (28-44 feet below land surface)

G-3728



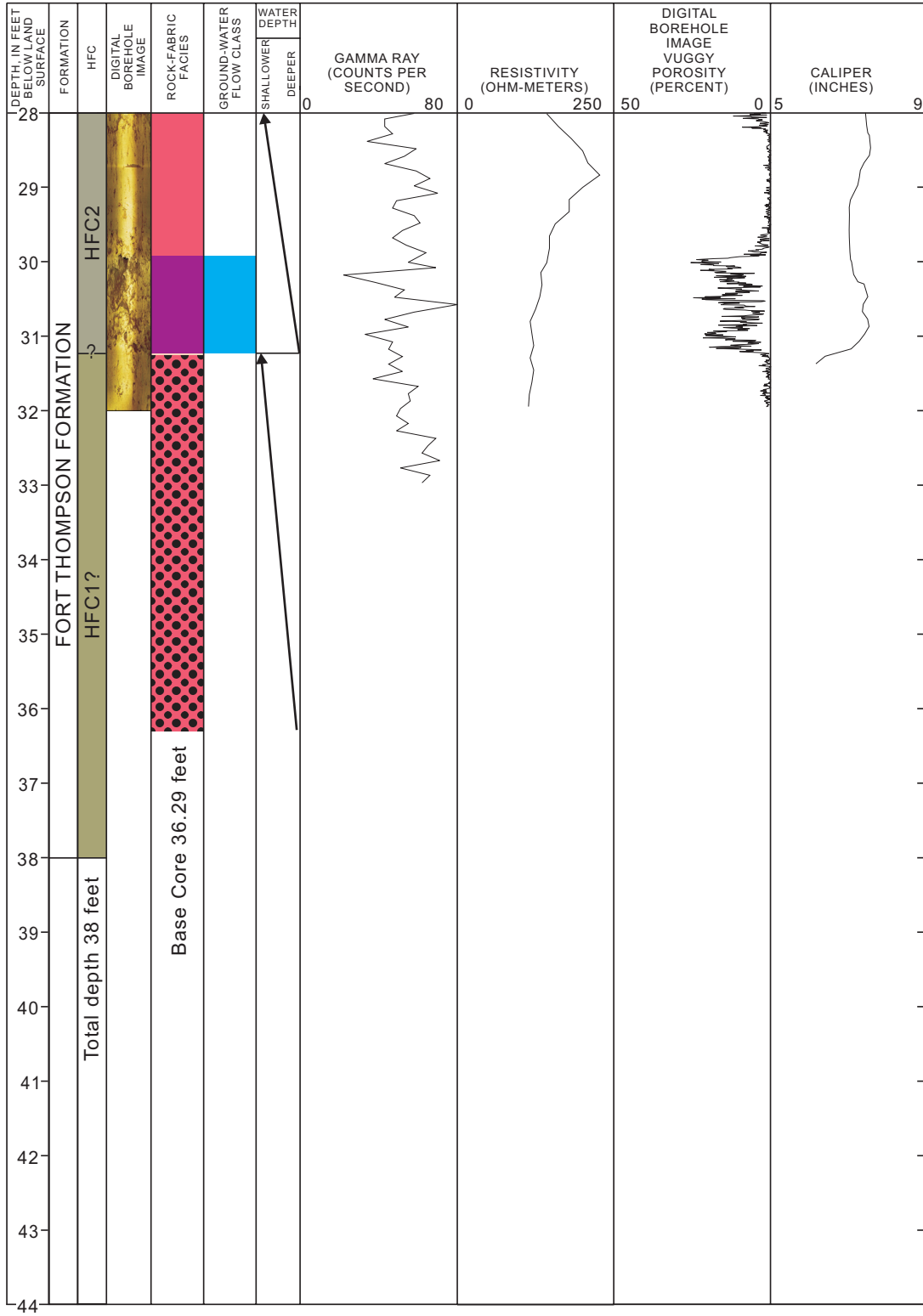
G-3728 (0-16 feet below land surface)

G-3728



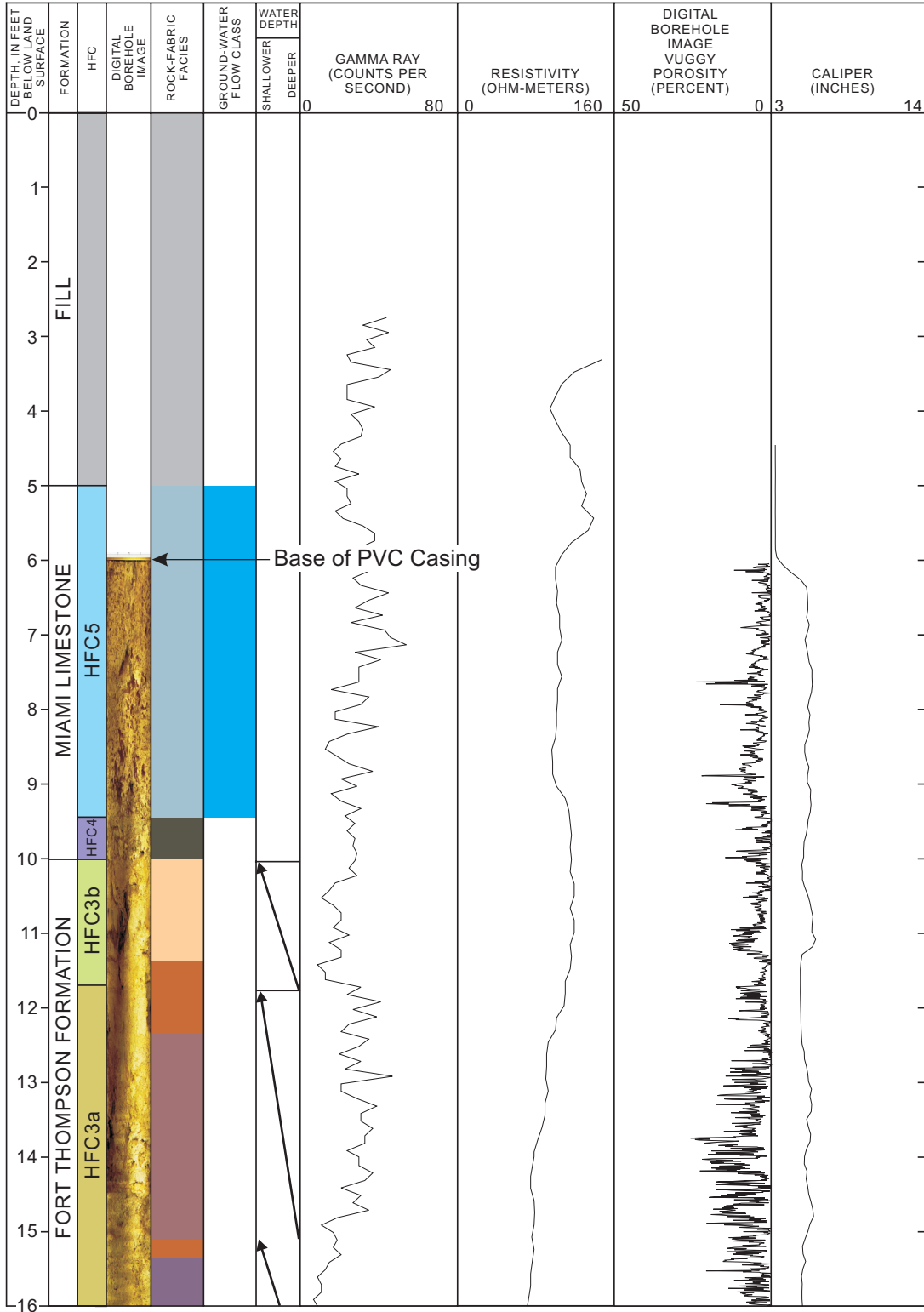
G-3728 (14-30 feet below land surface)

G-3728



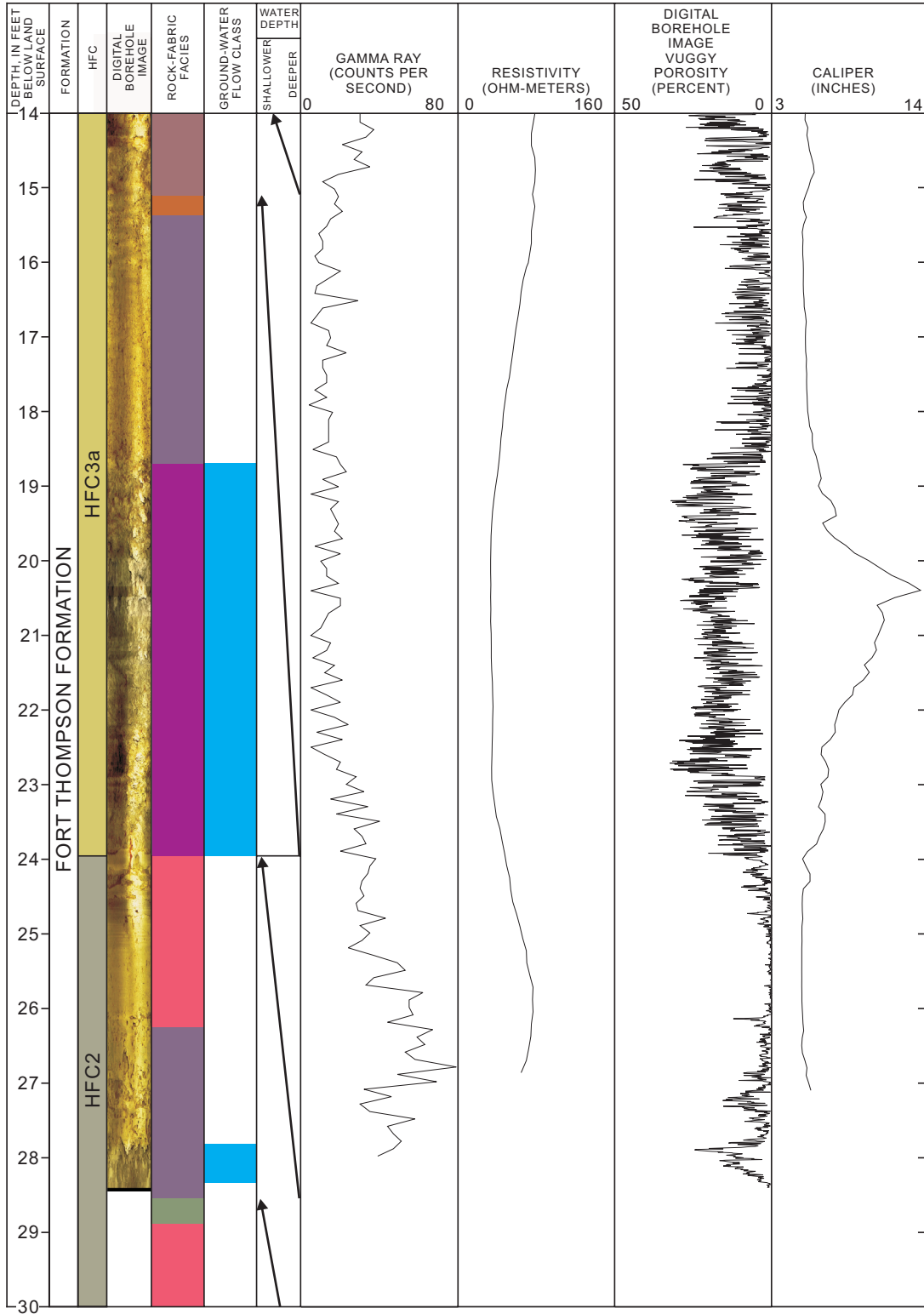
G-3728 (28-44 feet below land surface)

G-3729



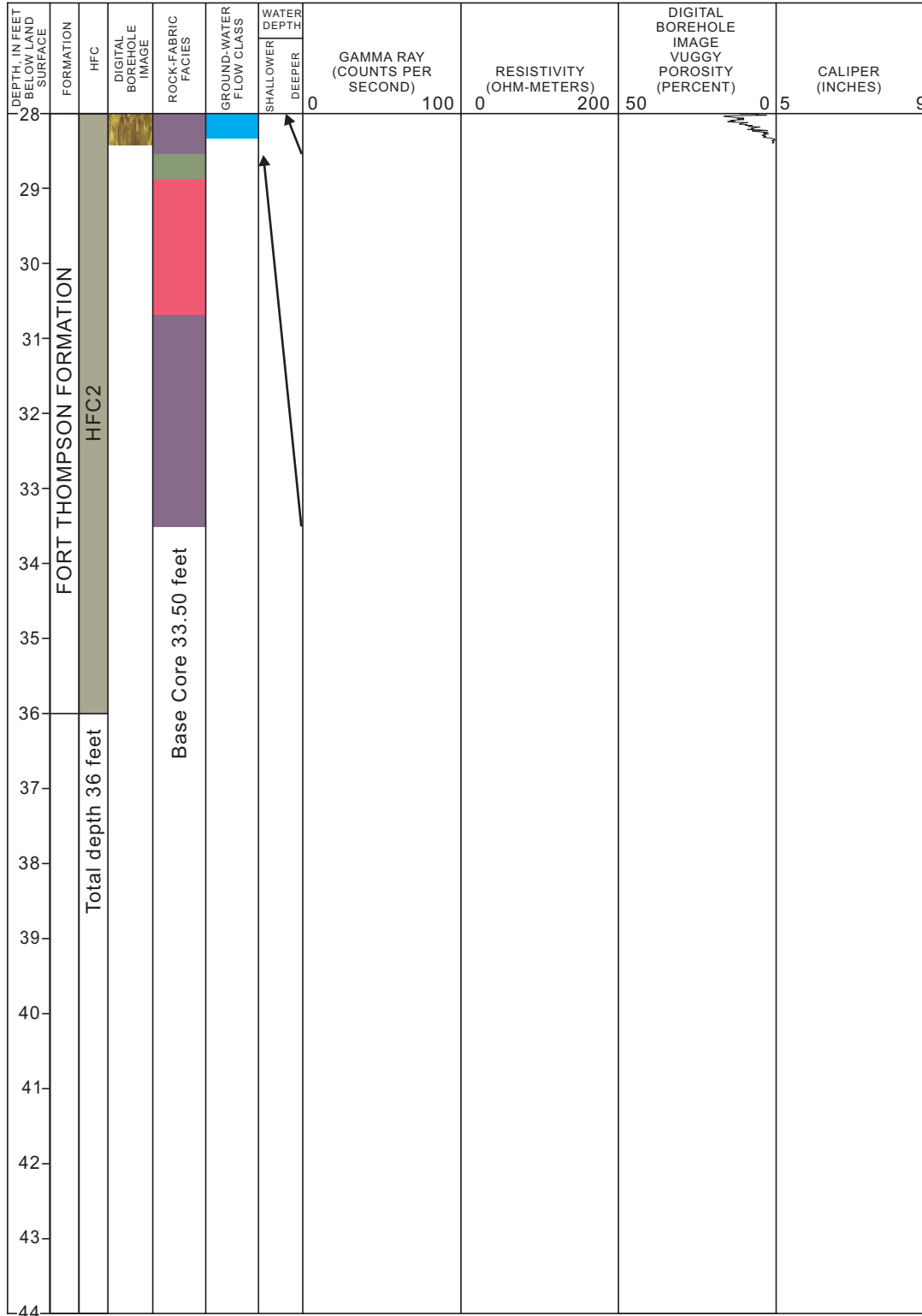
G-3729 (0-16 feet below land surface)

G-3729



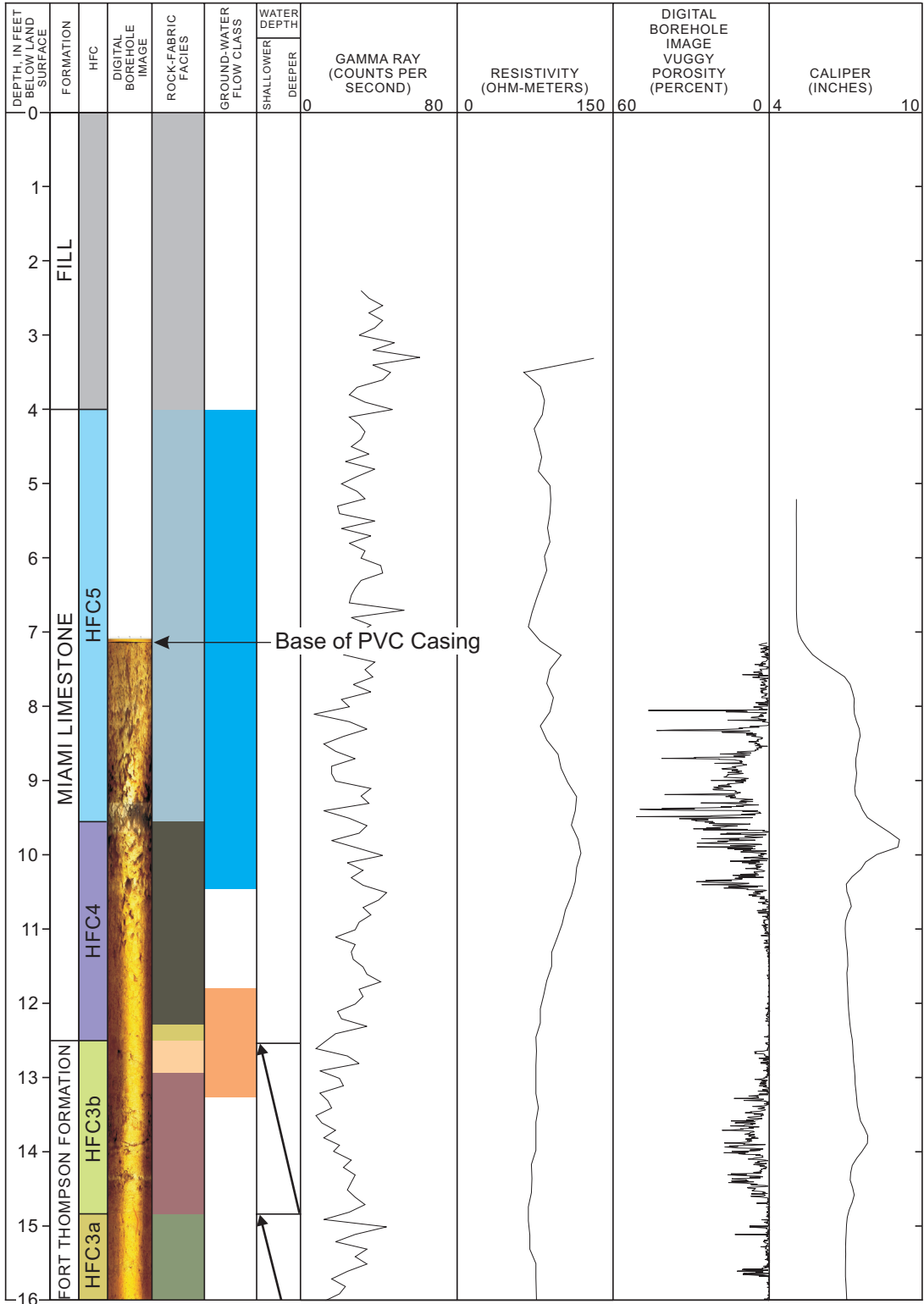
G-3729 (14-30 feet below land surface)

G-3729



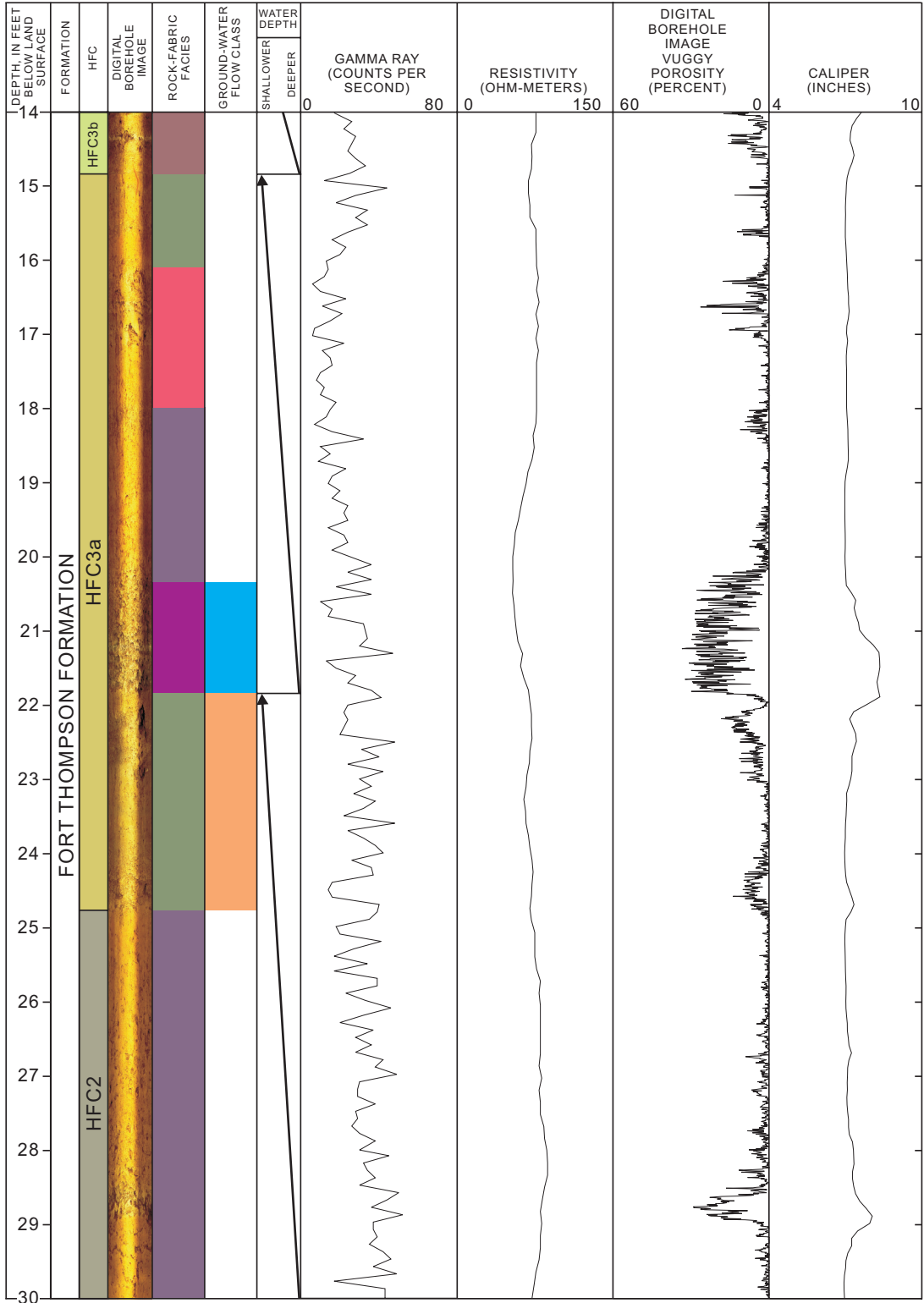
G-3729 (28-44 feet below land surface)

G-3730



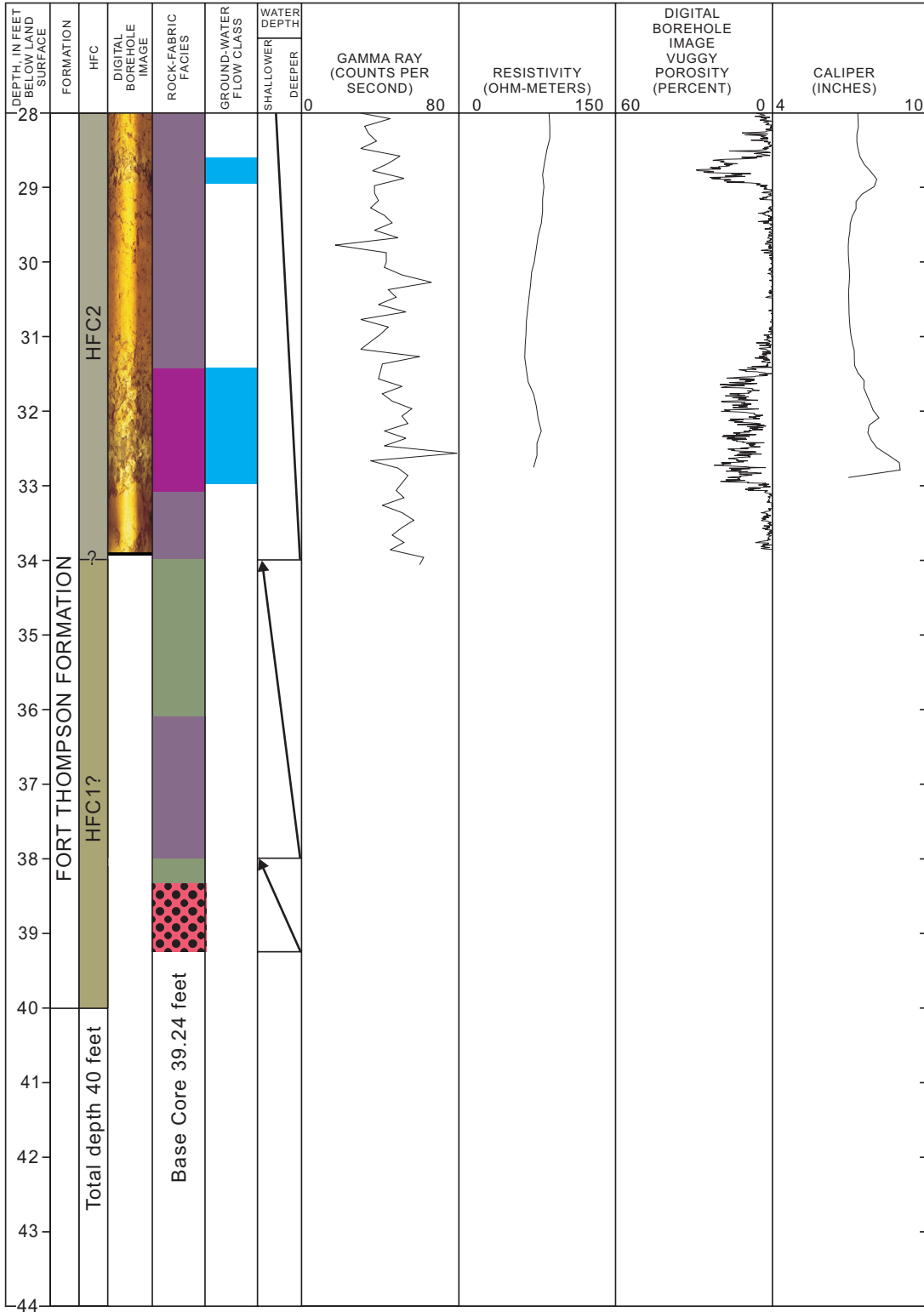
G-3730 (0-16 feet below land surface)

G-3730



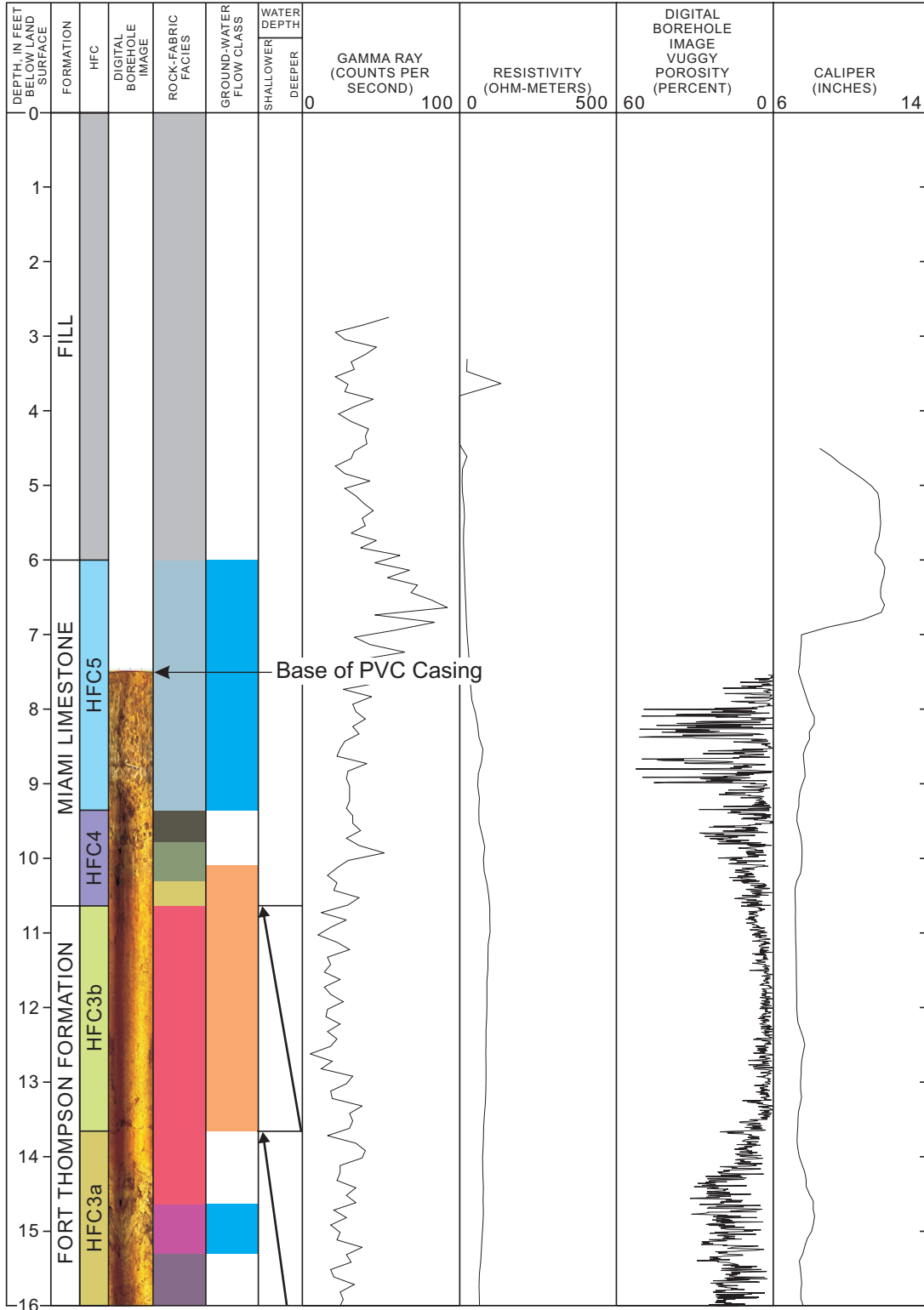
G-3730 (14-30 feet below land surface)

G-3730



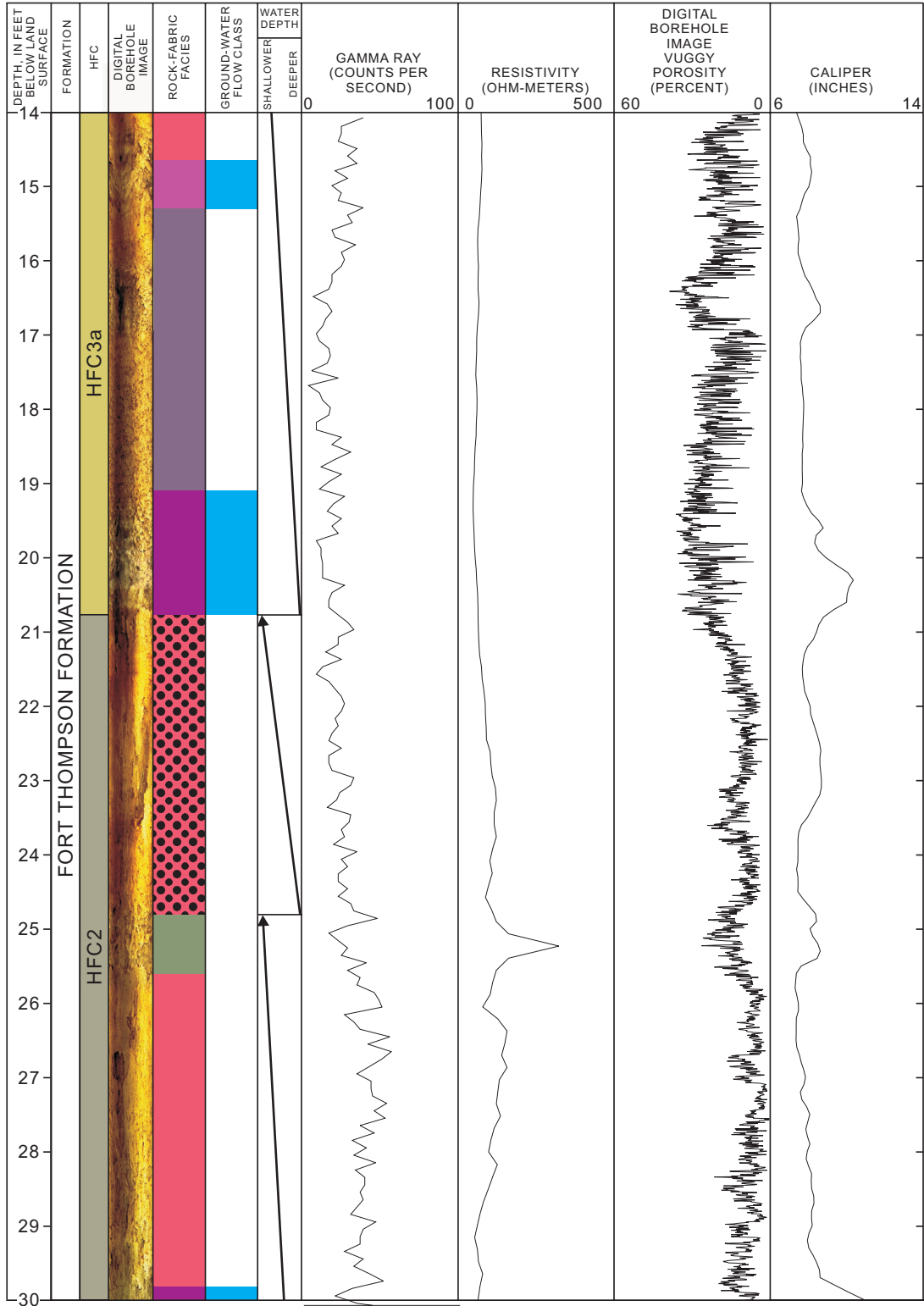
G-3730 (28-44 feet below land surface)

G-3731



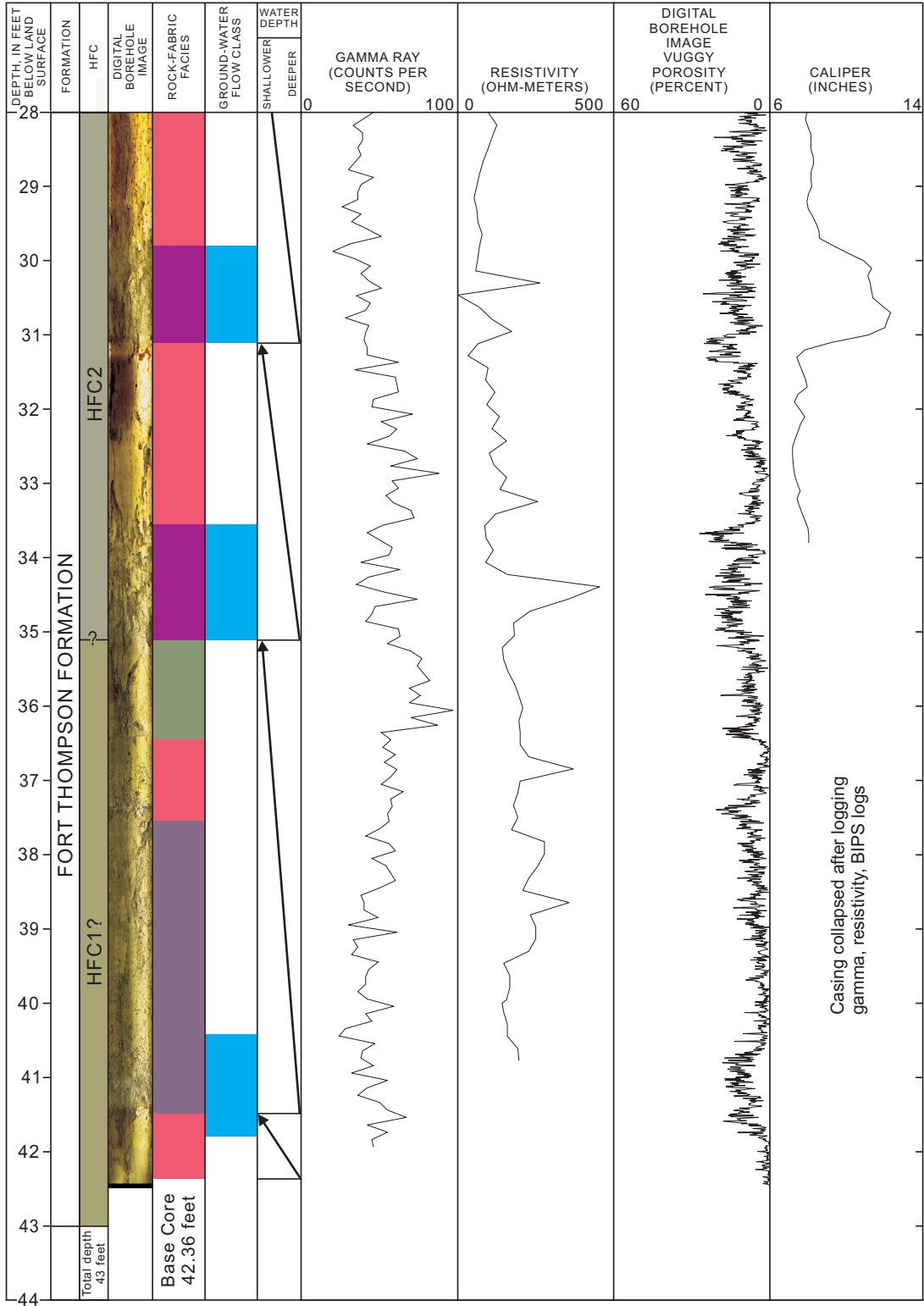
G-3731 (0-16 feet below land surface)

G-3731



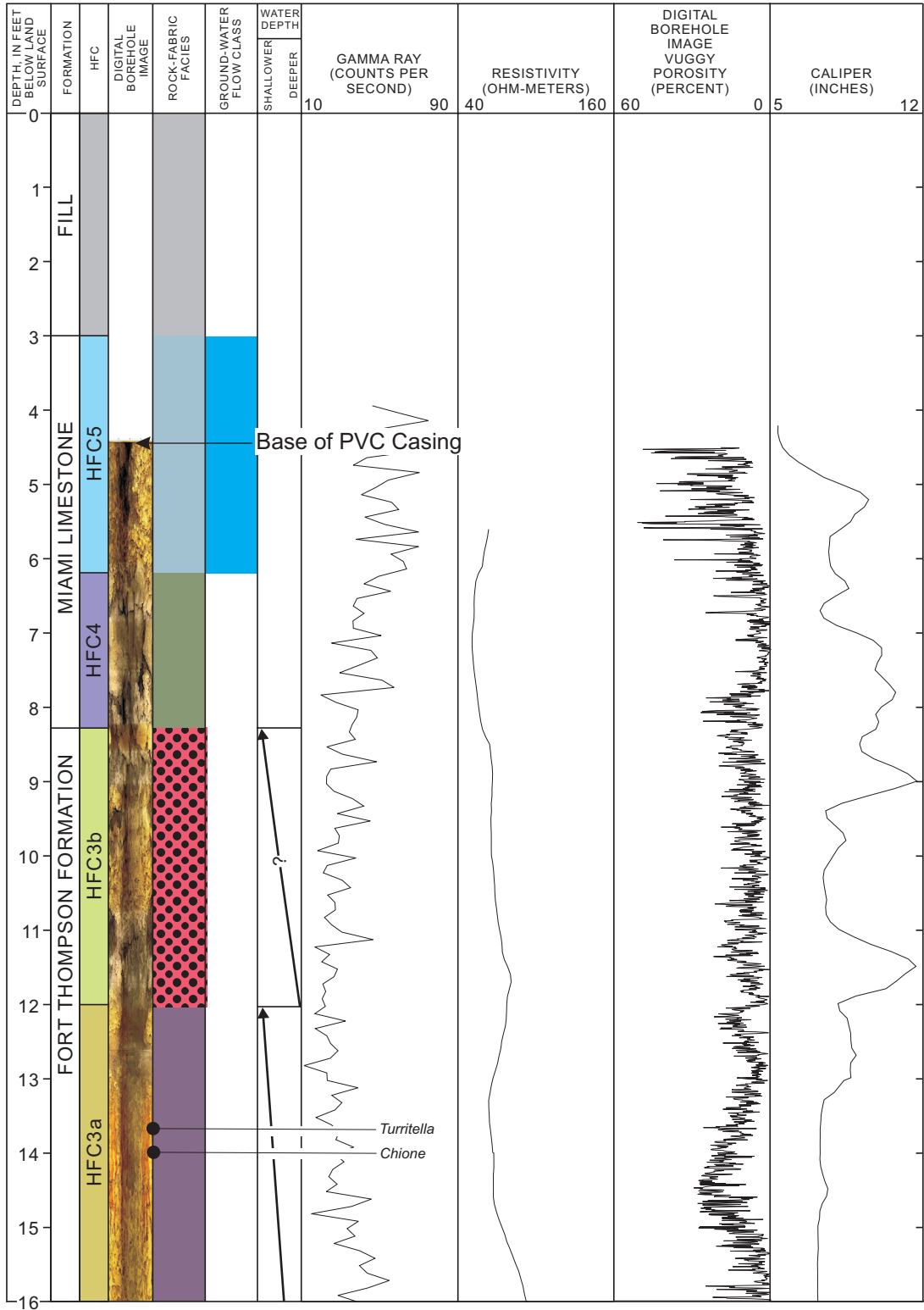
G-3731 (14-30 feet below land surface)

G-3731



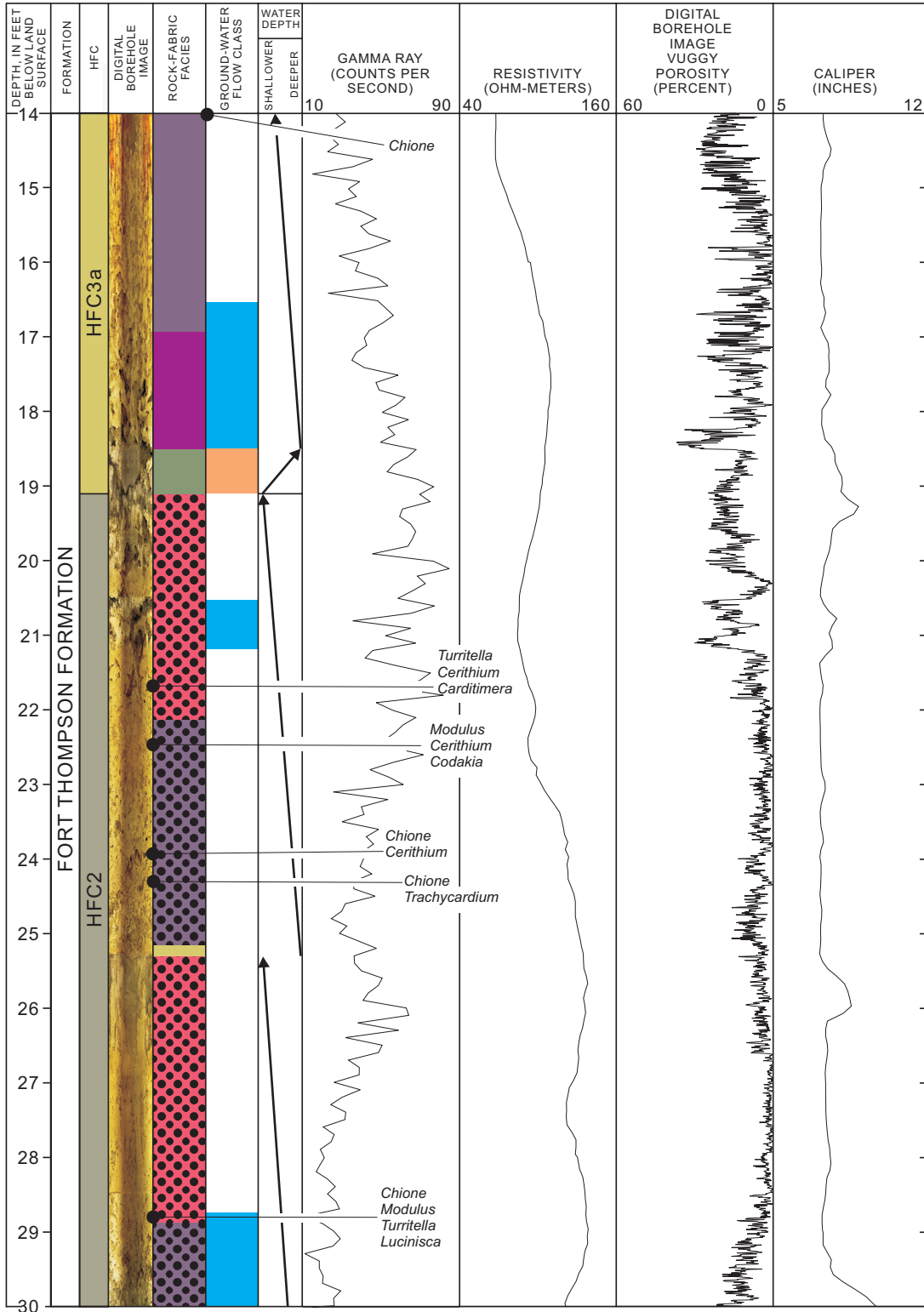
G-3731 (28-44 feet below land surface)

G-3732



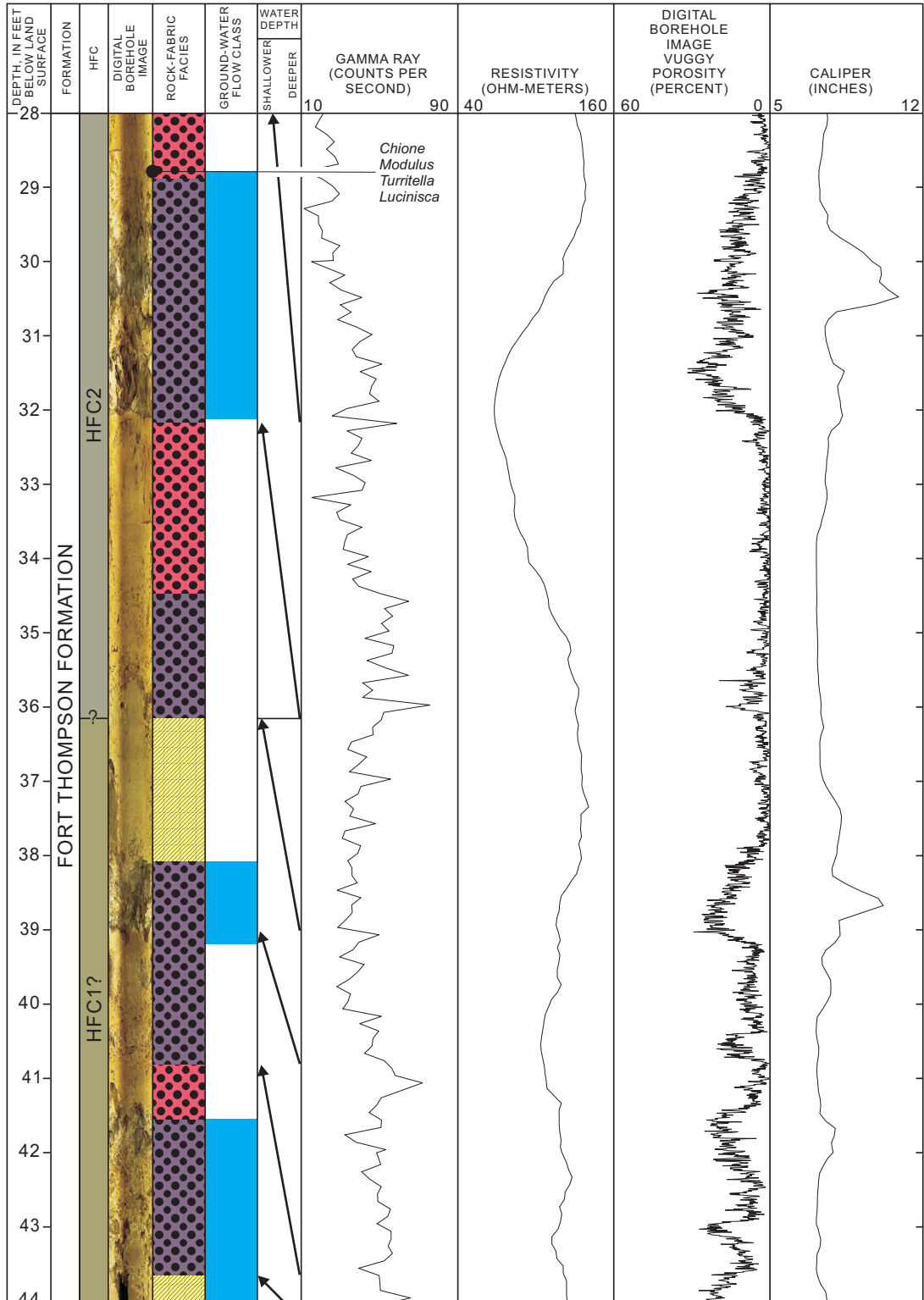
G-3732 (0-16 feet below land surface)

G-3732



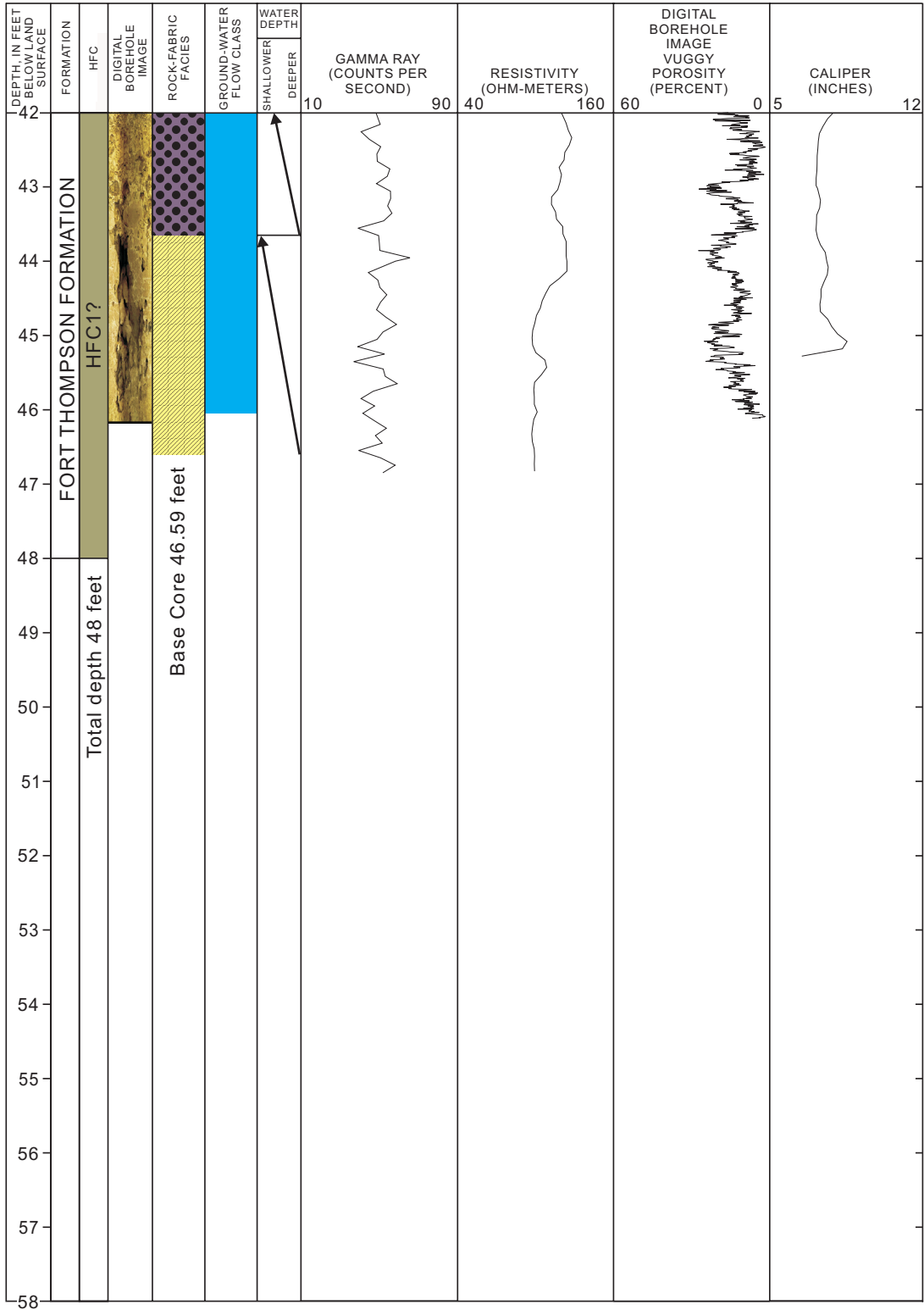
G-3732 (14-30 feet below land surface)

G-3732



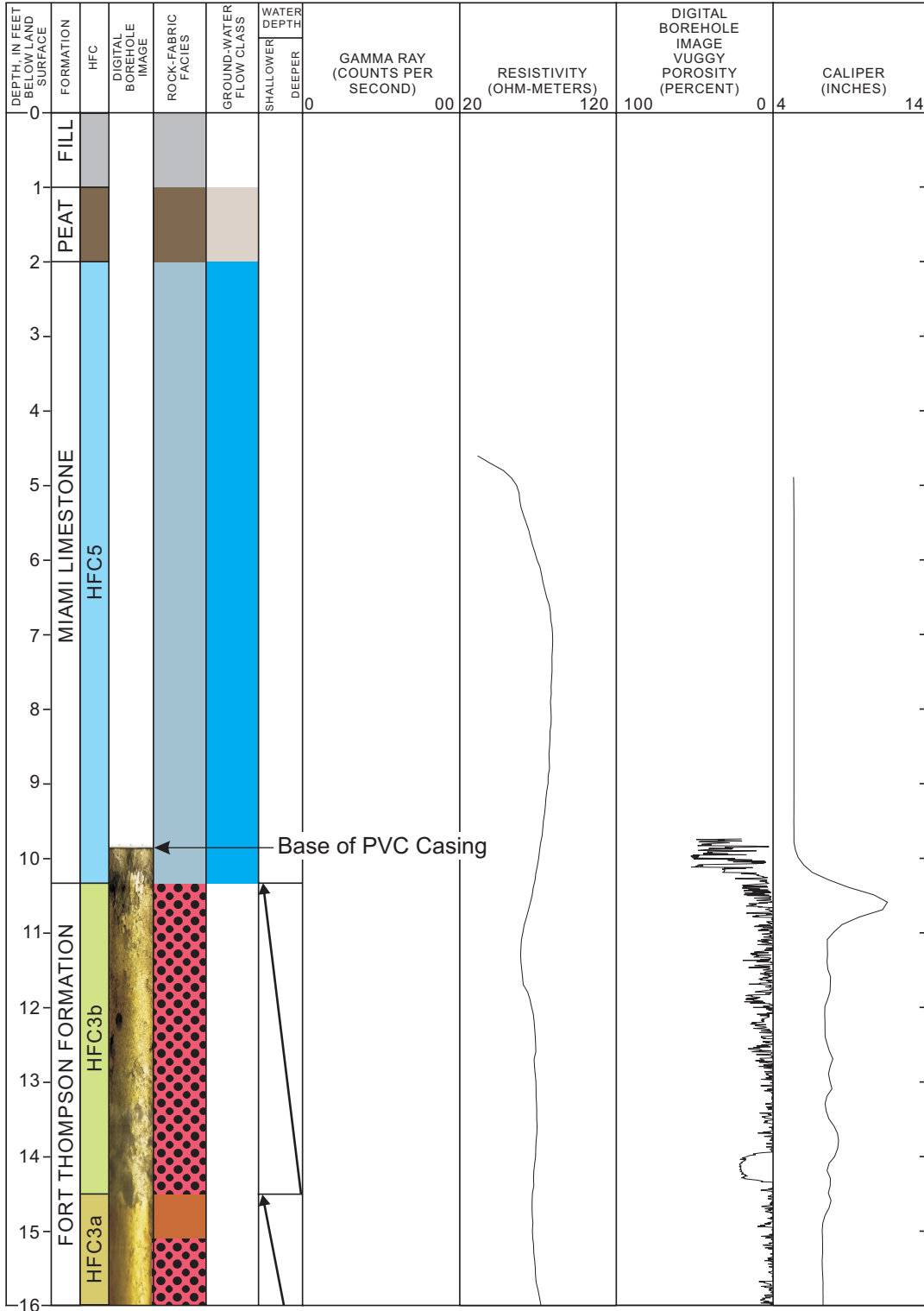
G-3732 (28-44 feet below land surface)

G-3732



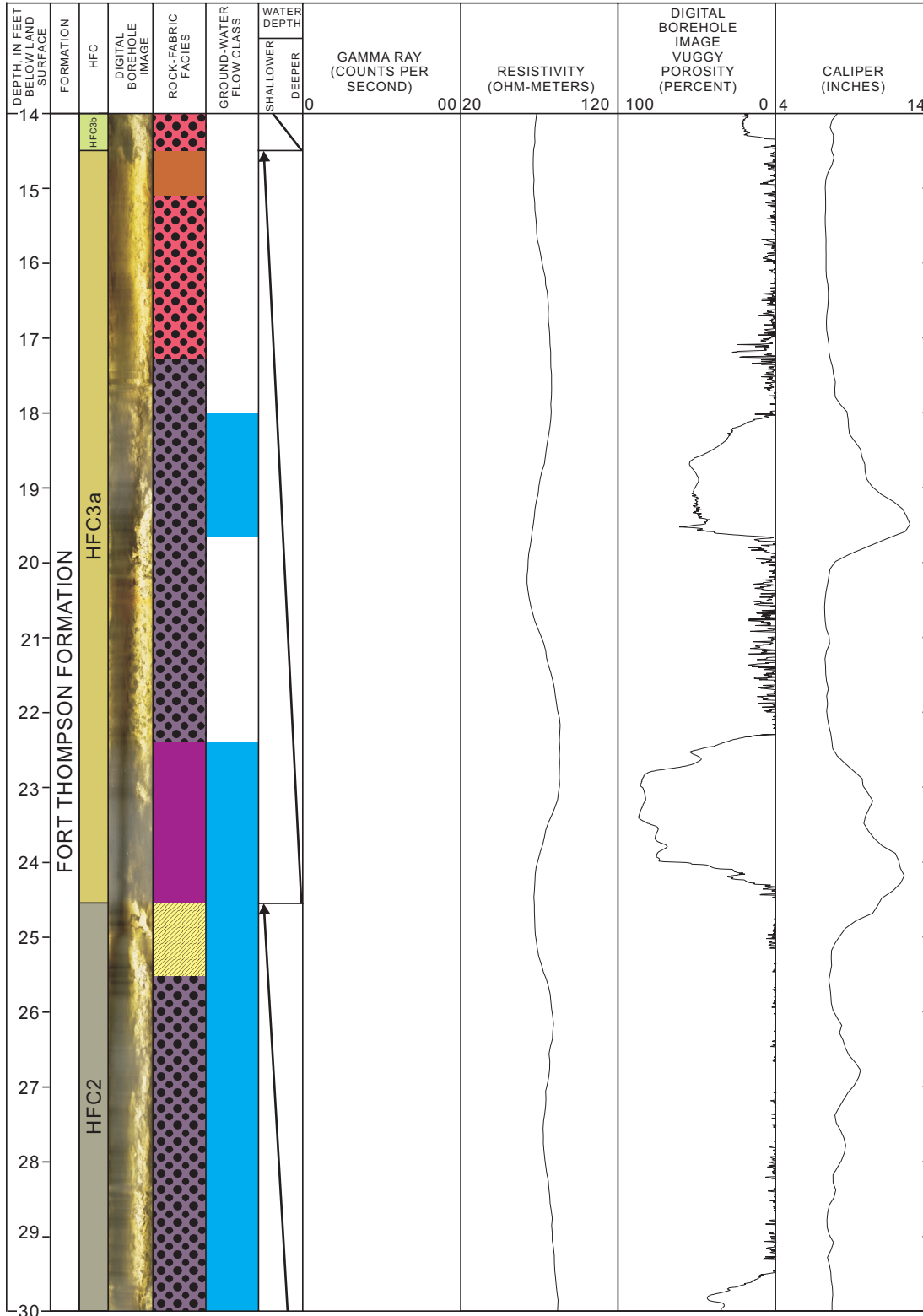
G-3732 (42-58 feet below land surface)

G-3733



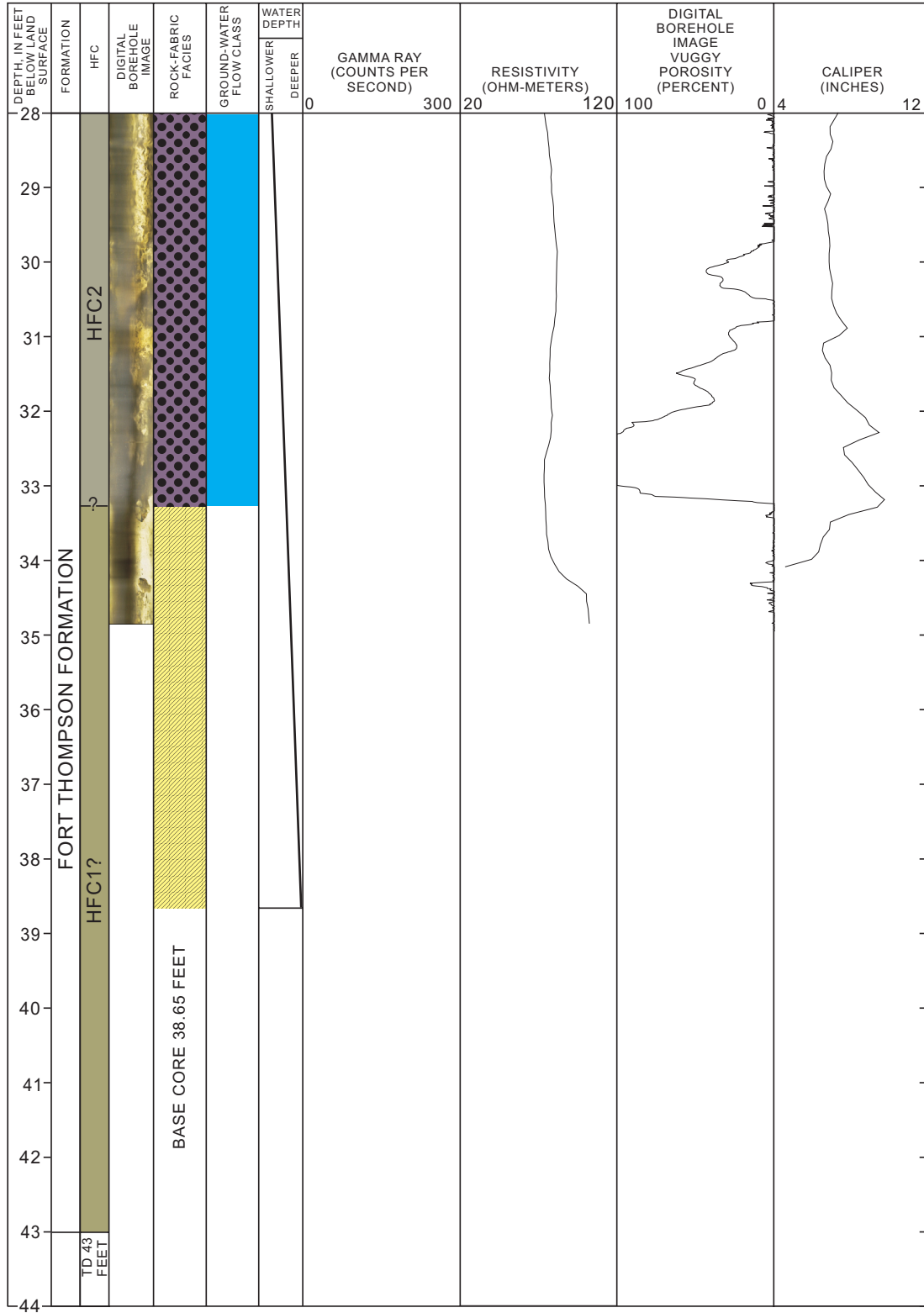
G-3733 (0-16 feet below land surface)

G-3733



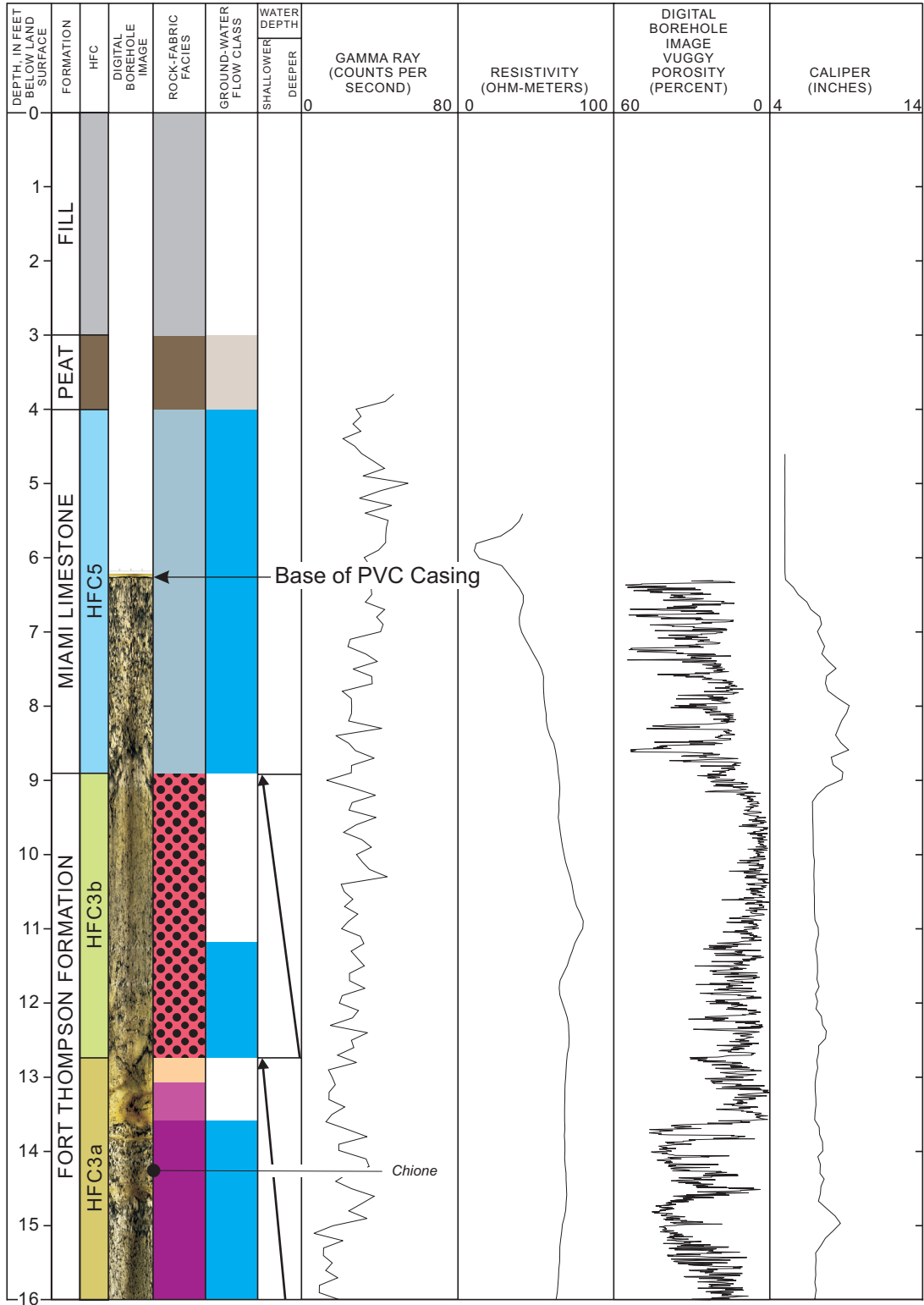
G-3733 (14-30 feet below land surface)

G-3733



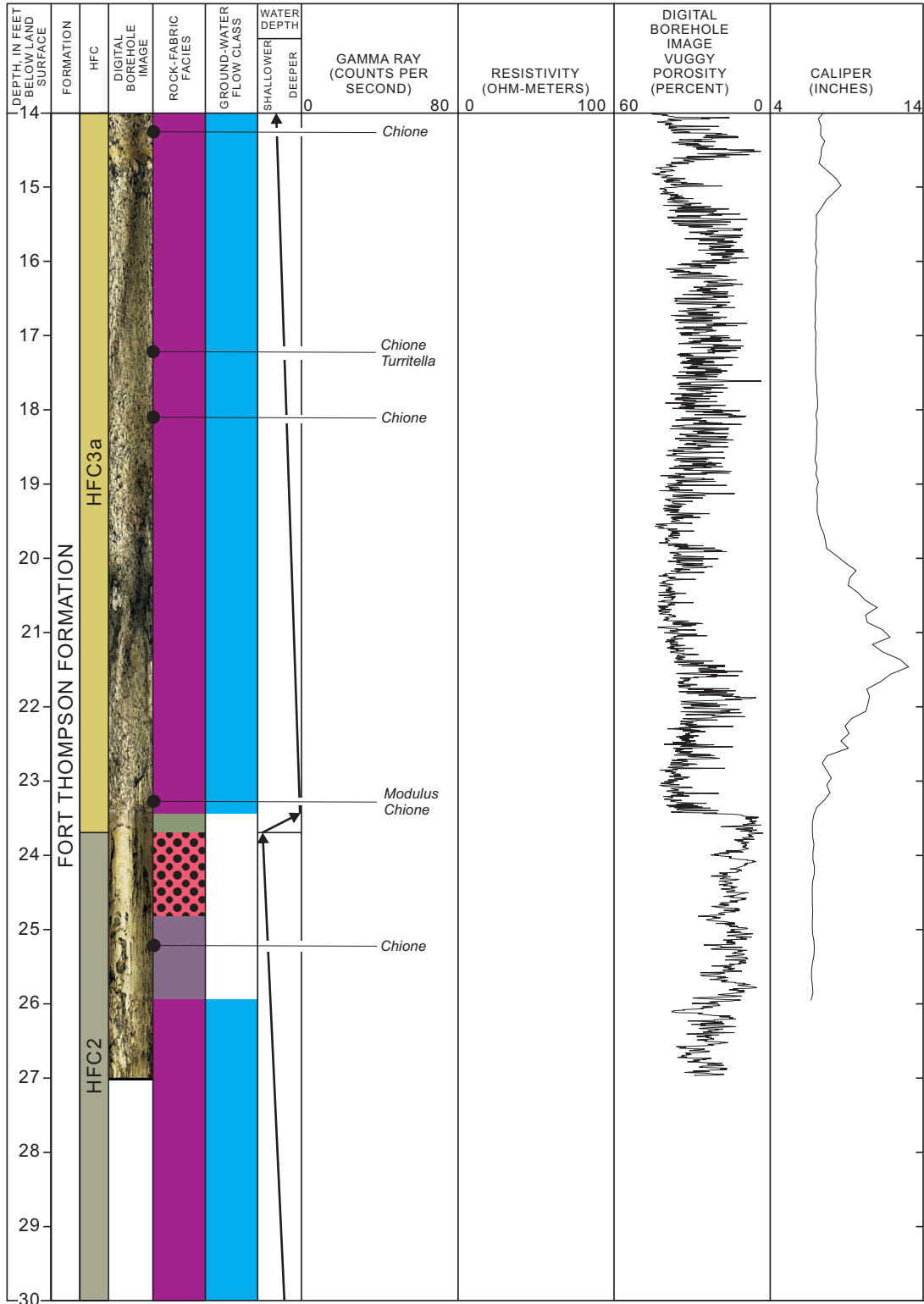
G-3733 (28-44 feet below land surface)

G-3734



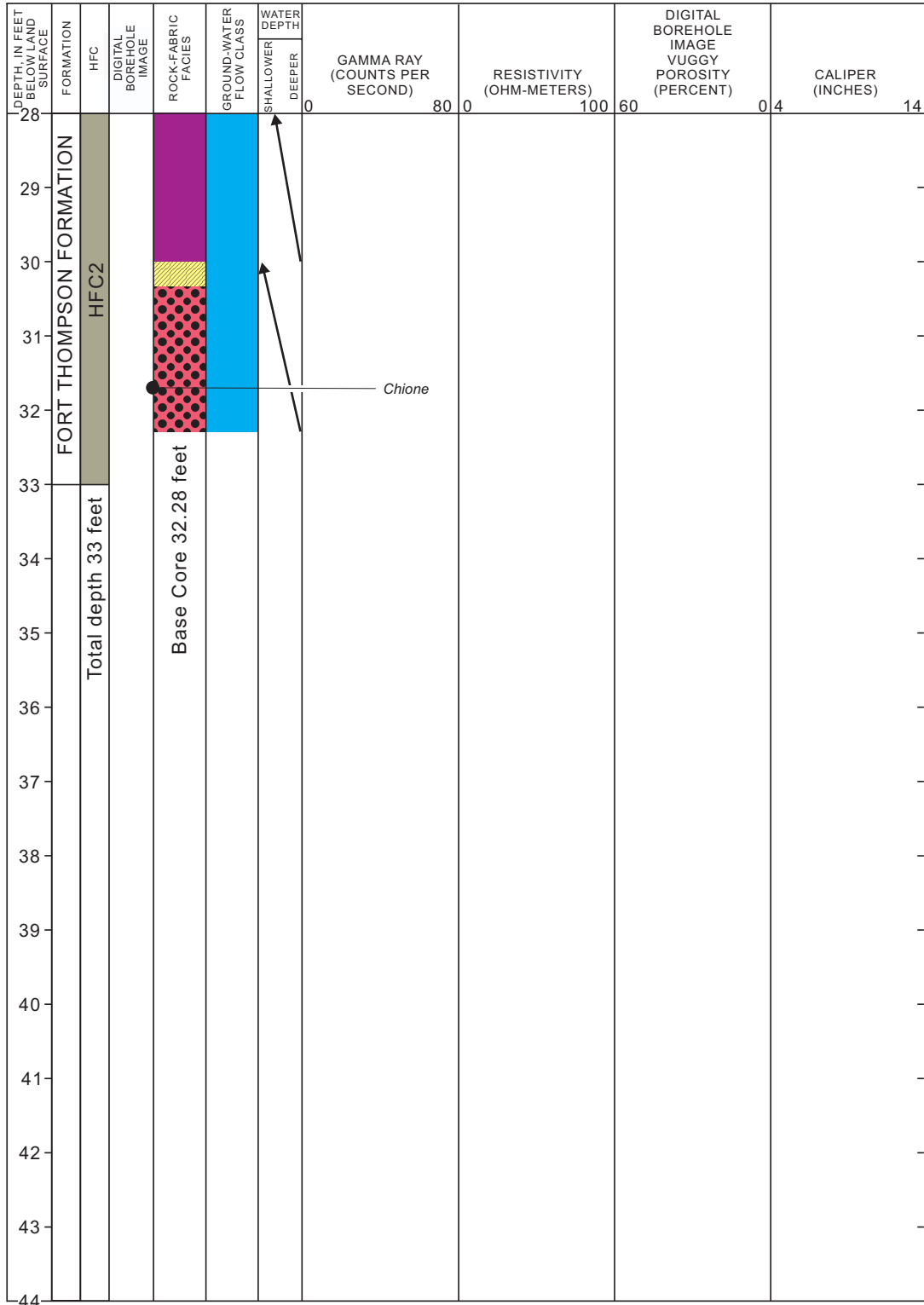
G-3734 (0-16 feet below land surface)

G-3734



G-3734 (14-30 feet below land surface)

G-3734



G-3734 (28-44 feet below land surface)