

**III. Revised OP Cumulative Risk Assessment Appendices**

**N. Appendix for Region E Humid Southeast Regional Assessment**

**2. Region E Cumulative Assessment Outputs for Children**

Figure III.N.2-1. Cumulative MOEs for Children 1-2 Region E 1-Day Analysis at 95<sup>th</sup> Percentile

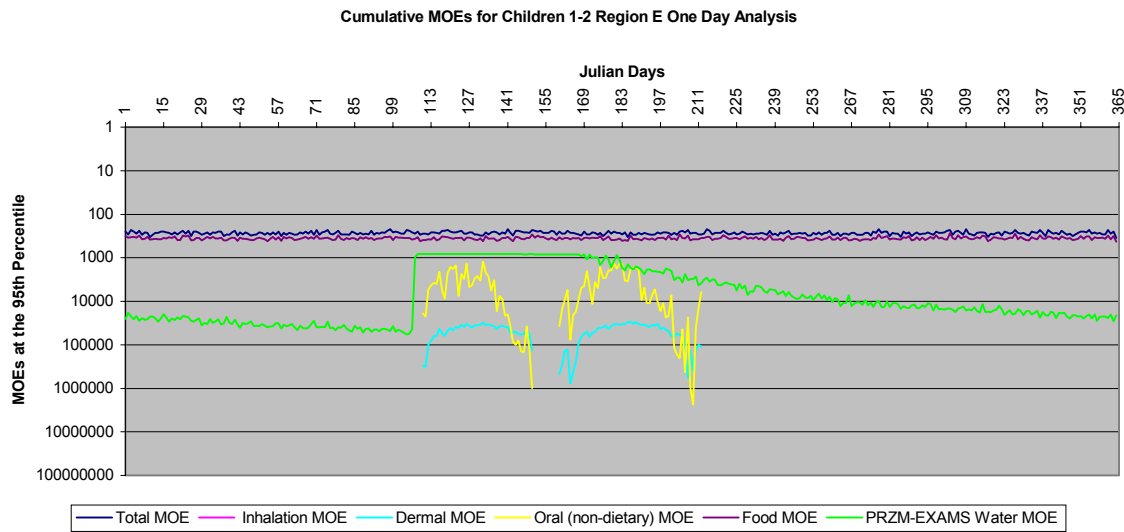
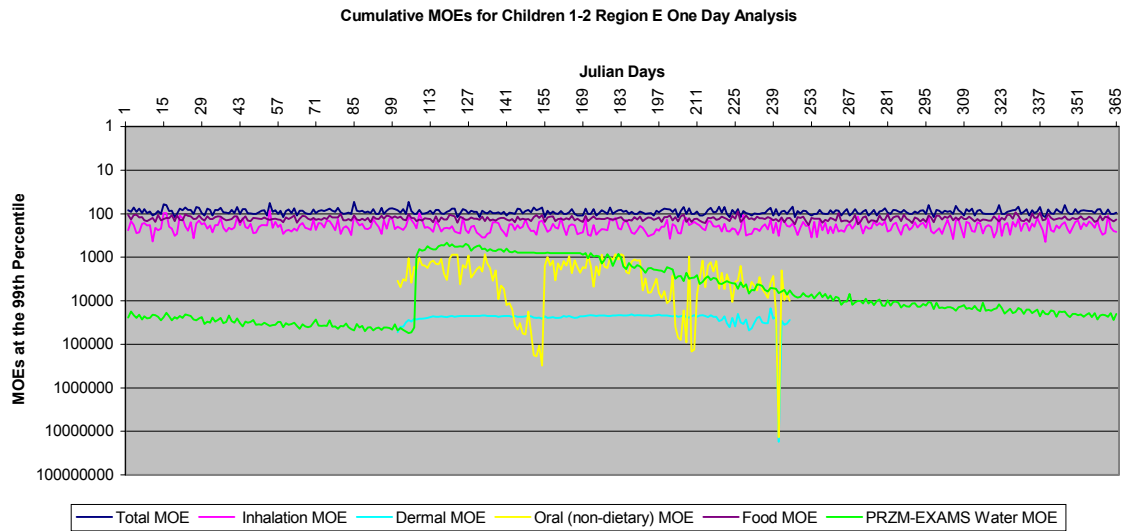
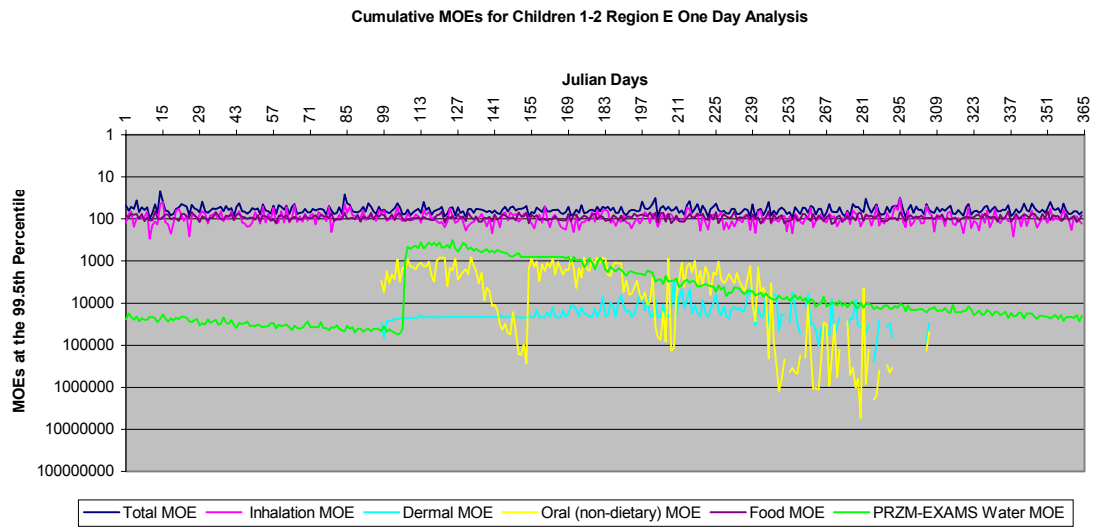


Figure III.N.2-2. Cumulative MOEs for Children 1-2 Region E 1-Day Analysis at 99<sup>th</sup> Percentile

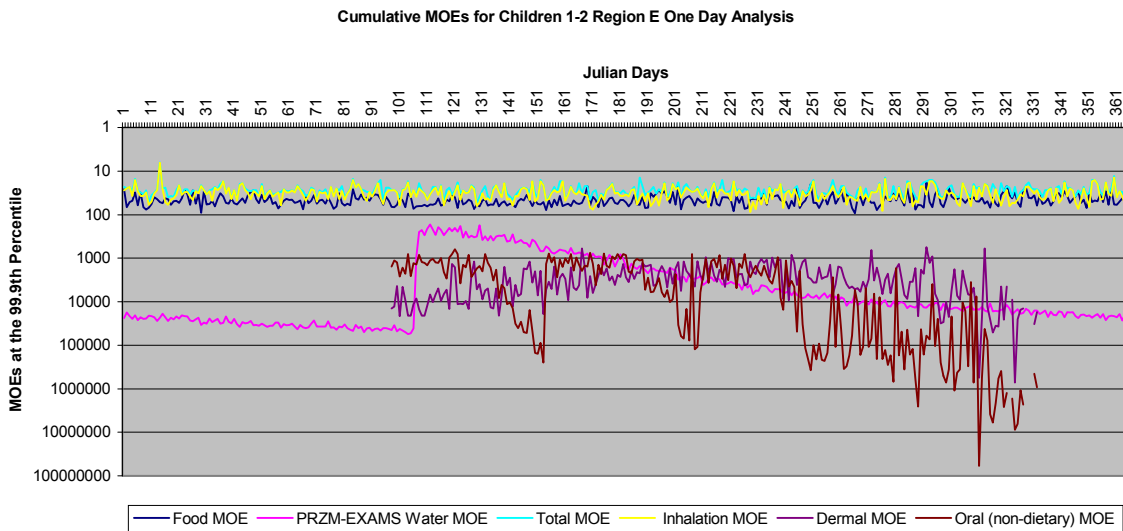


No single value in the graphs above should be used to independently arrive at the interpretation of the results. A more detailed description of the graphs are presented in the Risk Characterization section (Section I.H).

**Figure III.N.2-3. Cumulative MOEs for Children 1-2 Region E 1-Day Analysis at 99.5<sup>th</sup> Percentile**

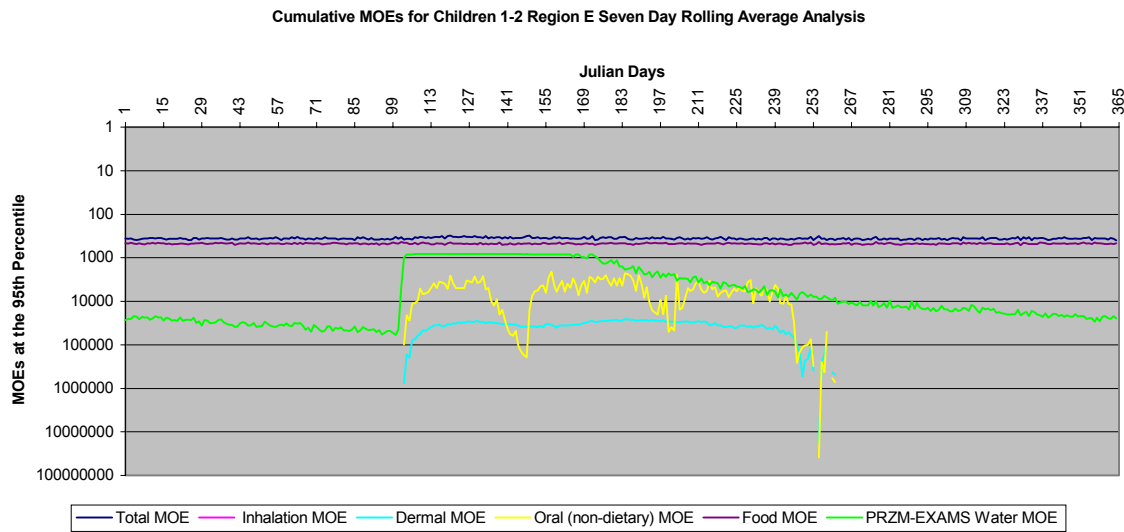


**Figure III.N.2-4. Cumulative MOEs for Children 1-2 Region E 1-Day Analysis at 99.9<sup>th</sup> Percentile**

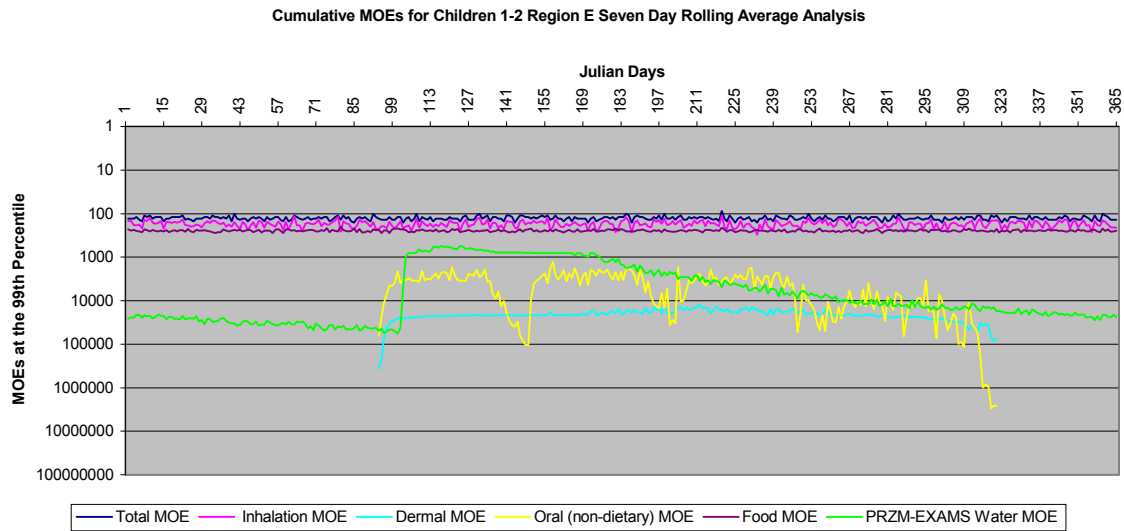


No single value in the graphs above should be used to independently arrive at the interpretation of the results. A more detailed description of the graphs are presented in the Risk Characterization section (Section I.H).

**Figure III.N.2-5. Cumulative MOEs for Children 1-2 Region E 7-Day Analysis at 95<sup>th</sup> Percentile**

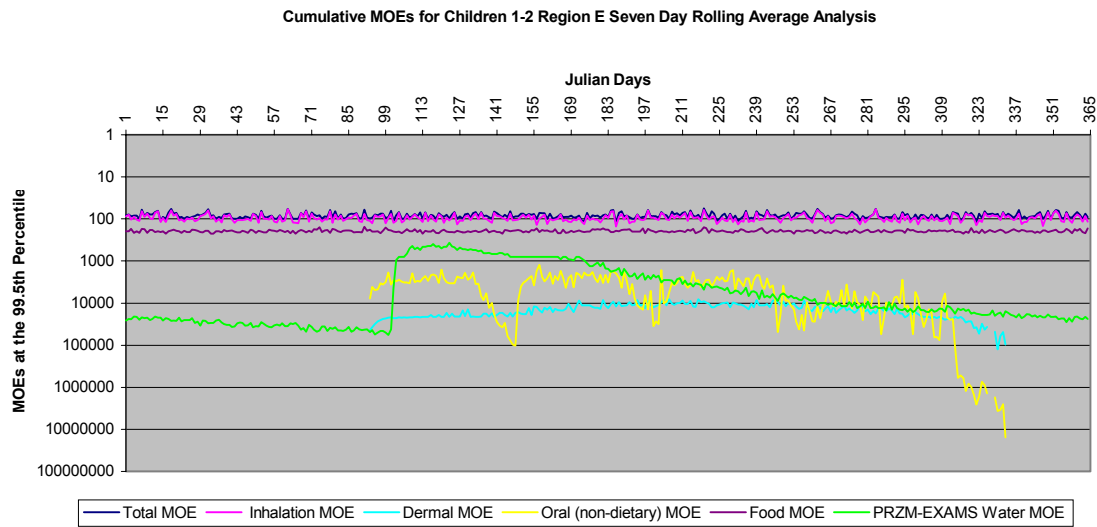


**Figure III.N.2-6. Cumulative MOEs for Children 1-2 Region E 7-Day Analysis at 99<sup>th</sup> Percentile**

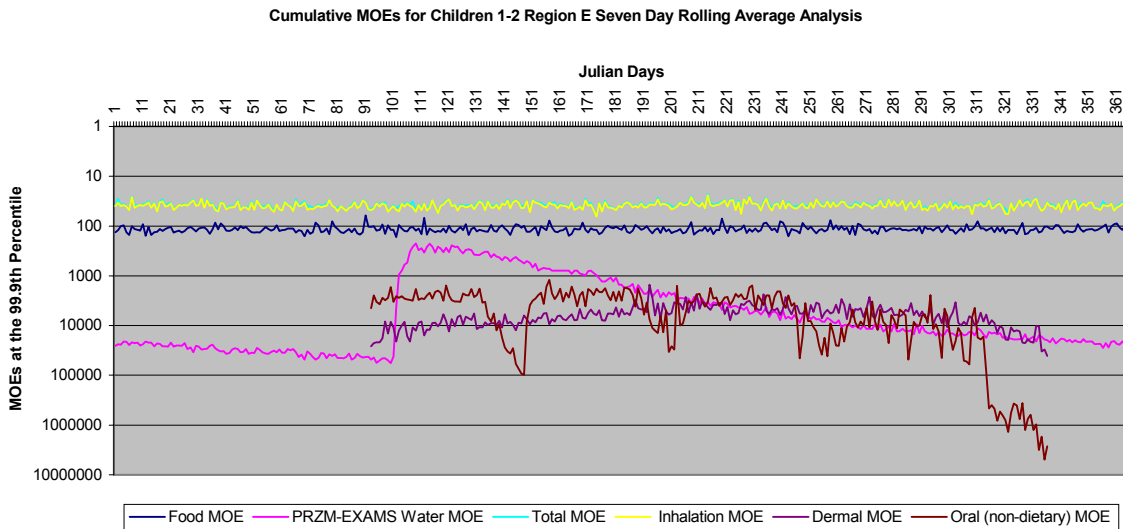


No single value in the graphs above should be used to independently arrive at the interpretation of the results. A more detailed description of the graphs are presented in the Risk Characterization section (Section I.H).

**Figure III.N.2-7. Cumulative MOEs for Children 1-2 Region E 7-Day Analysis at 99.5<sup>th</sup> Percentile**

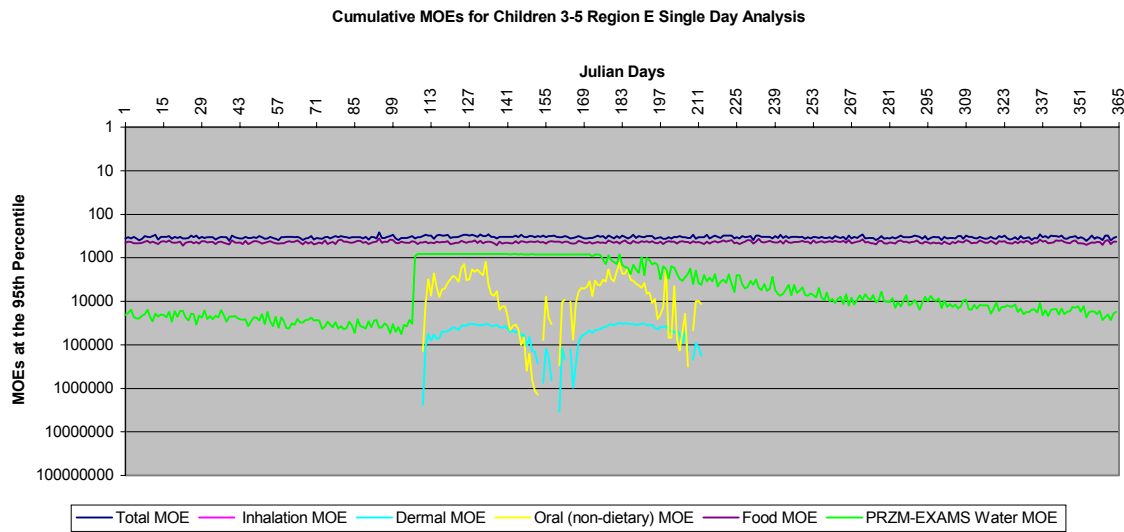


**Figure III.N.2-8. Cumulative MOEs for Children 1-2 Region E 7-Day Analysis at 99.9<sup>th</sup> Percentile**

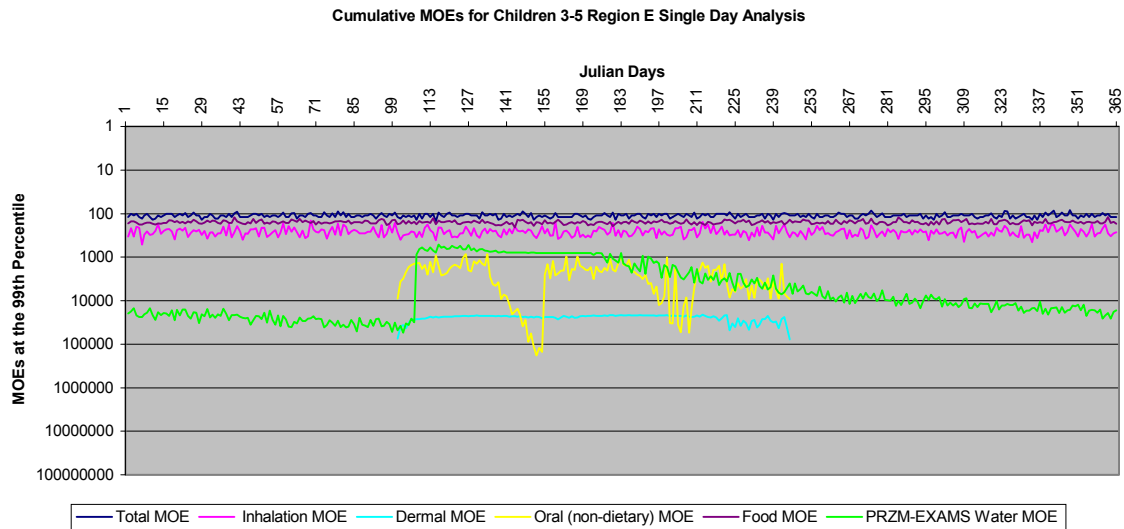


No single value in the graphs above should be used to independently arrive at the interpretation of the results. A more detailed description of the graphs are presented in the Risk Characterization section (Section I.H).

**Figure III.N.2-9. Cumulative MOEs for Children 3-5 Region E 1-Day Analysis at 95<sup>th</sup> Percentile**

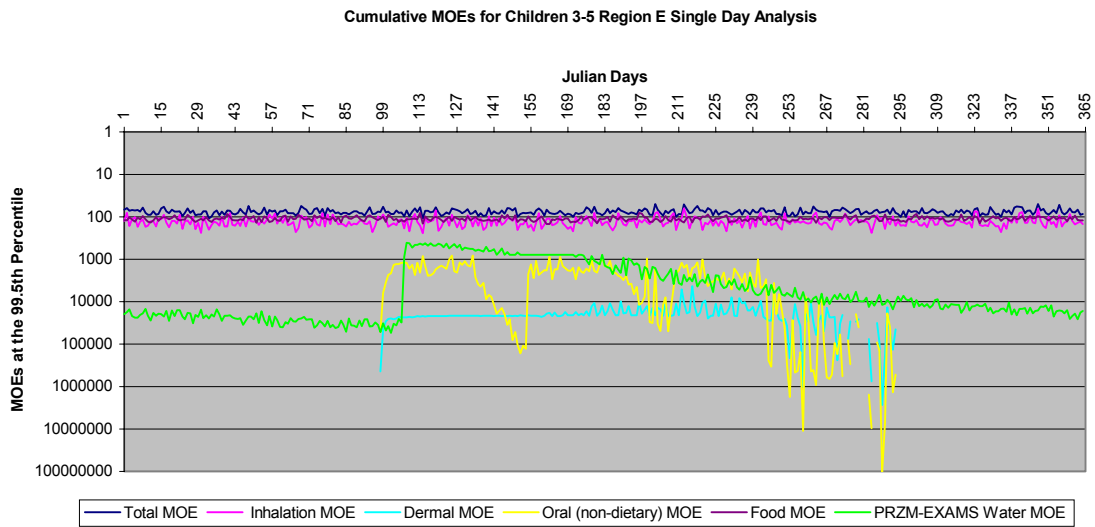


**Figure III.N.2-10. Cumulative MOEs for Children 3-5 Region E 1-Day Analysis at 99<sup>th</sup> Percentile**

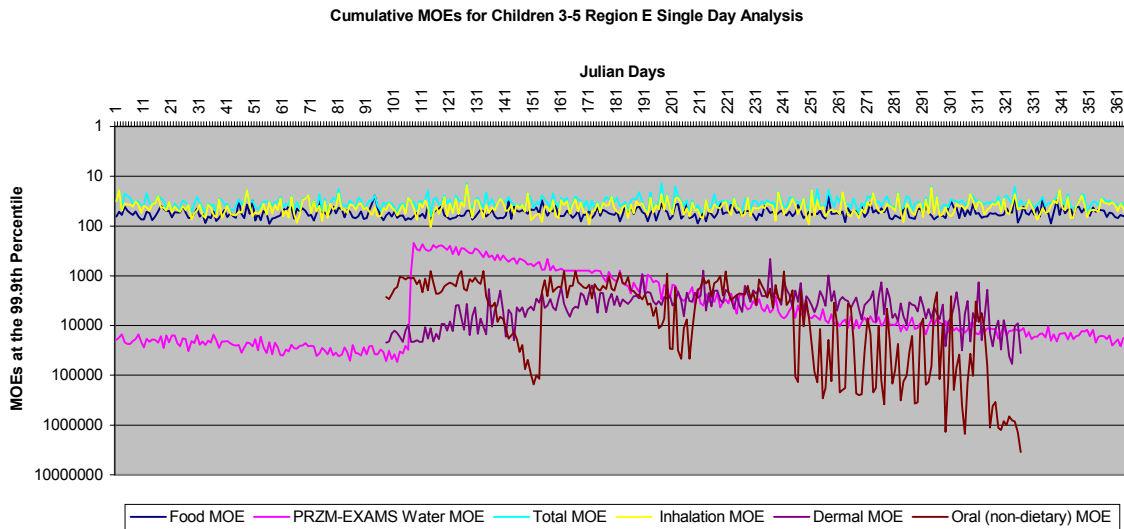


No single value in the graphs above should be used to independently arrive at the interpretation of the results. A more detailed description of the graphs are presented in the Risk Characterization section (Section I.H).

**Figure III.N.2-11. Cumulative MOEs for Children 3-5 Region E 1-Day Analysis at 99.5<sup>th</sup> Percentile**

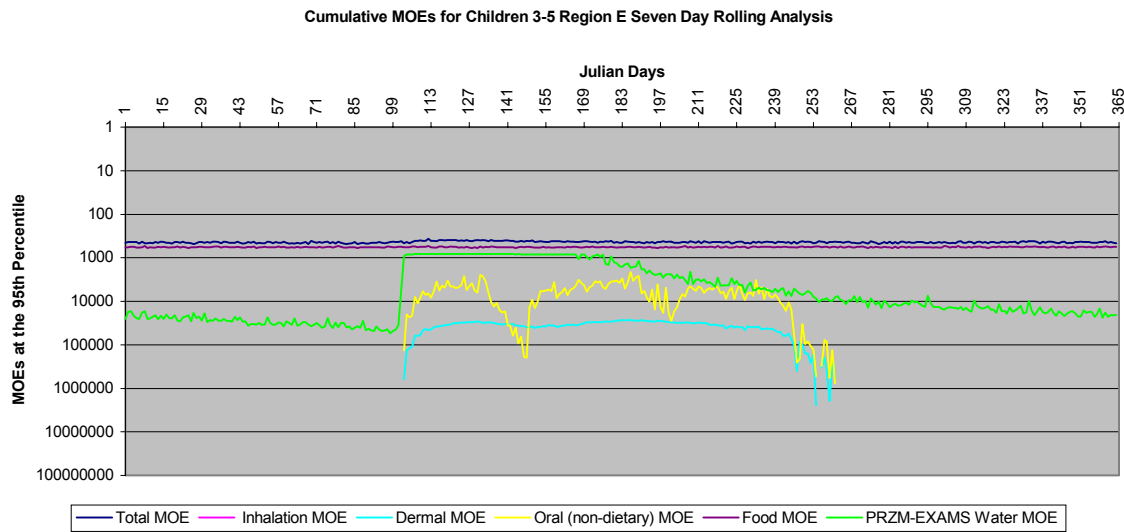


**Figure III.N.2-12. Cumulative MOEs for Children 3-5 Region E 1-Day Analysis at 99.9<sup>th</sup> Percentile**

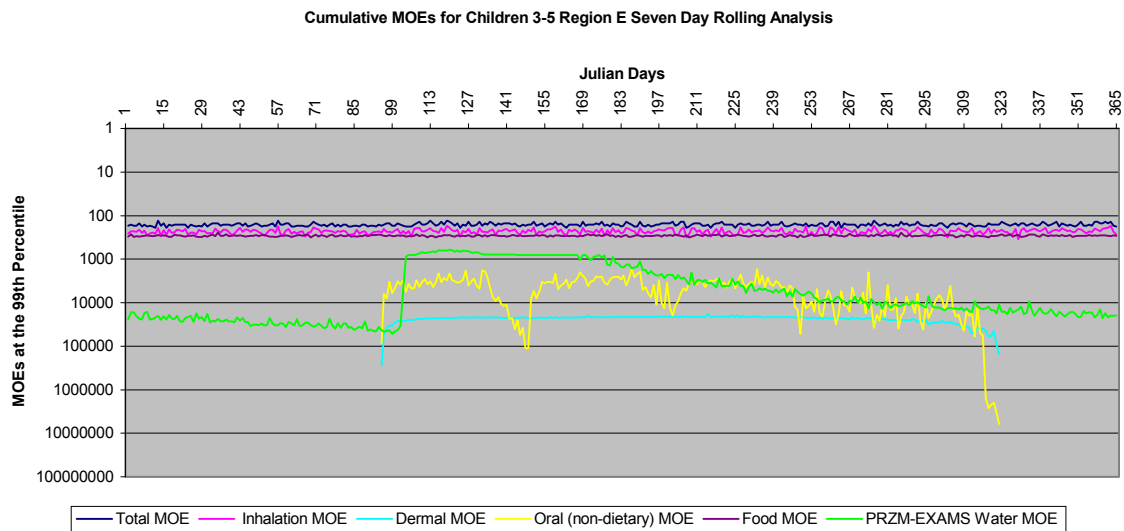


No single value in the graphs above should be used to independently arrive at the interpretation of the results. A more detailed description of the graphs are presented in the Risk Characterization section (Section I.H).

**Figure III.N.2-13. Cumulative MOEs for Children 3-5 Region E 7-Day Analysis at 95<sup>th</sup> Percentile**



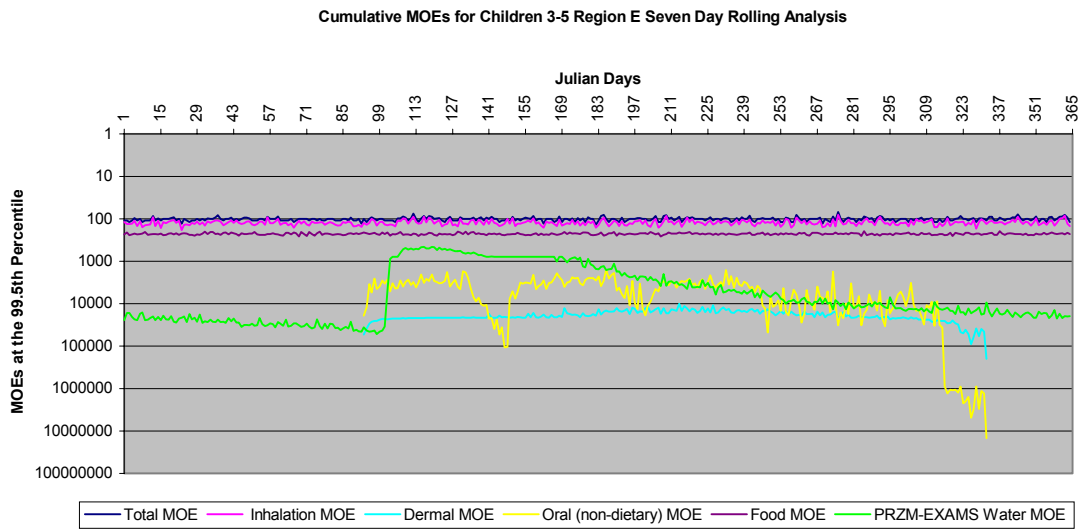
**Figure III.N.2-14. Cumulative MOEs for Children 3-5 Region E 7-Day Analysis at 99<sup>th</sup> Percentile**



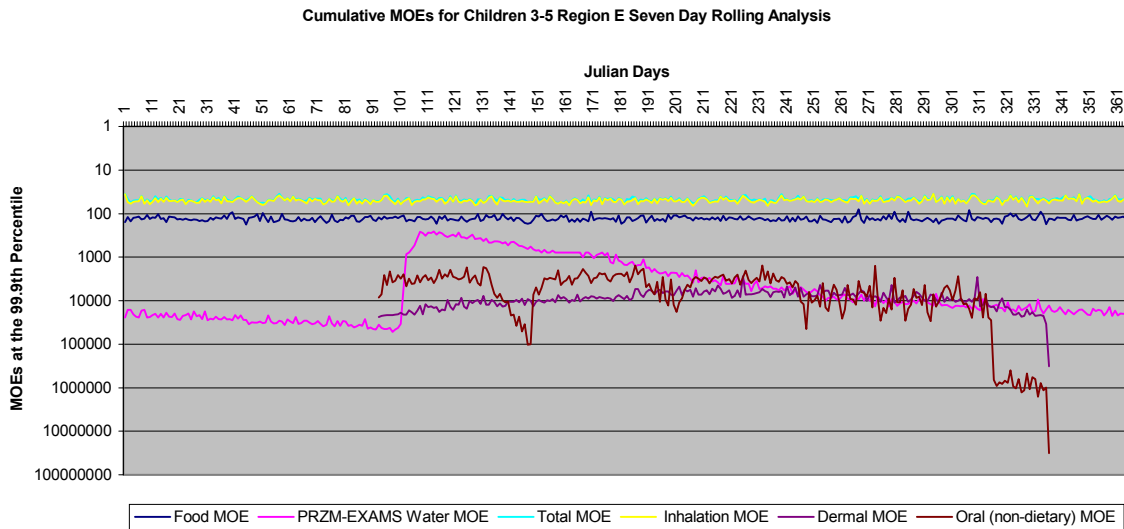
No single value in the graphs above should be used to independently arrive at the interpretation of the results. A more detailed description of the graphs are presented in the Risk Characterization section (Section I.H).



**Figure III.N.2-15. Cumulative MOEs for Children 3-5 Region E 7-Day Analysis at 99.5<sup>th</sup> Percentile**



**Figure III.N.2-16. Cumulative MOEs for Children 3-5 Region E 7-Day Analysis at 99.9<sup>th</sup> Percentile**



No single value in the graphs above should be used to independently arrive at the interpretation of the results. A more detailed description of the graphs are presented in the Risk Characterization section (Section I.H).