

III. Revised OP Cumulative Risk Assessment Appendices

L. Appendix for Region C Arid/Semiarid West Regional Assessment

2. Region C Cumulative Assessment Outputs for Children

Figure III.L.2-1. Cumulative MOEs for Children 1-2 Region C 1-Day Analysis at 95th Percentile

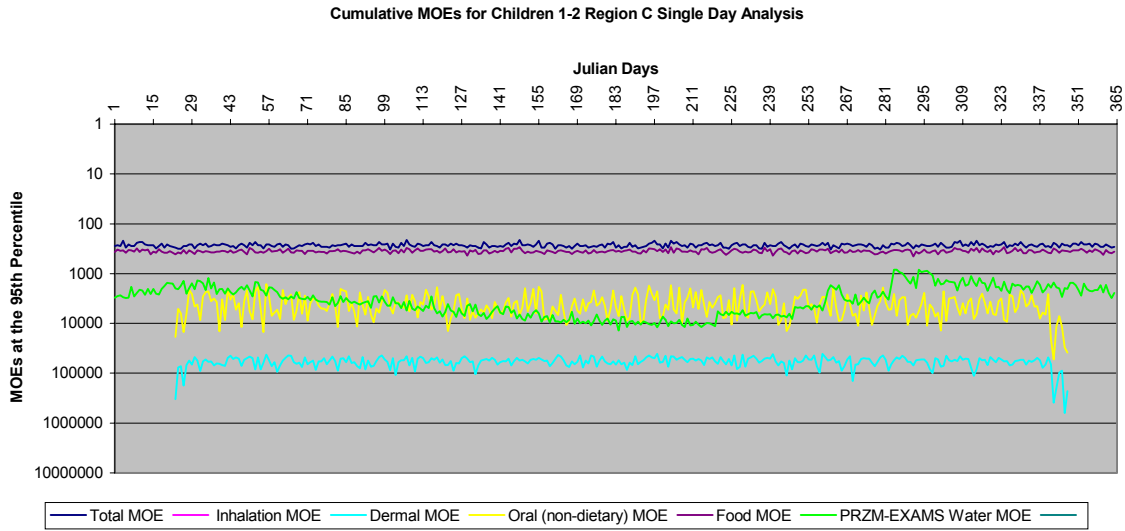
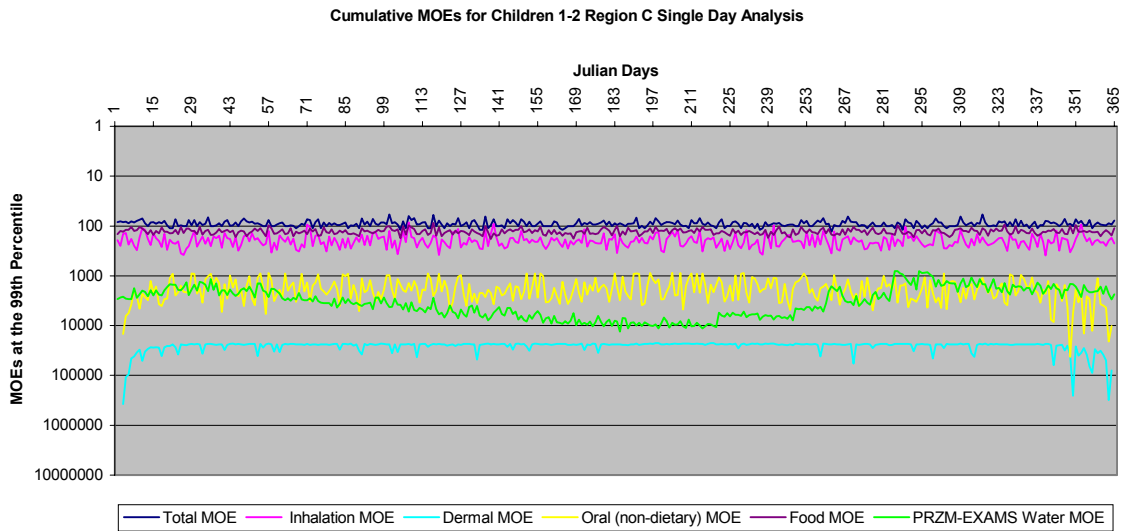


Figure III.L.2-2. Cumulative MOEs for Children 1-2 Region C 1-Day Analysis at 99th Percentile



No single value in the graphs above should be used to independently arrive at the interpretation of the results. A more detailed description of the graphs are presented in the Risk Characterization section (Section I.H).

Figure III.L.2-3. Cumulative MOEs for Children 1-2 Region C 1-Day Analysis at 99.5th Percentile

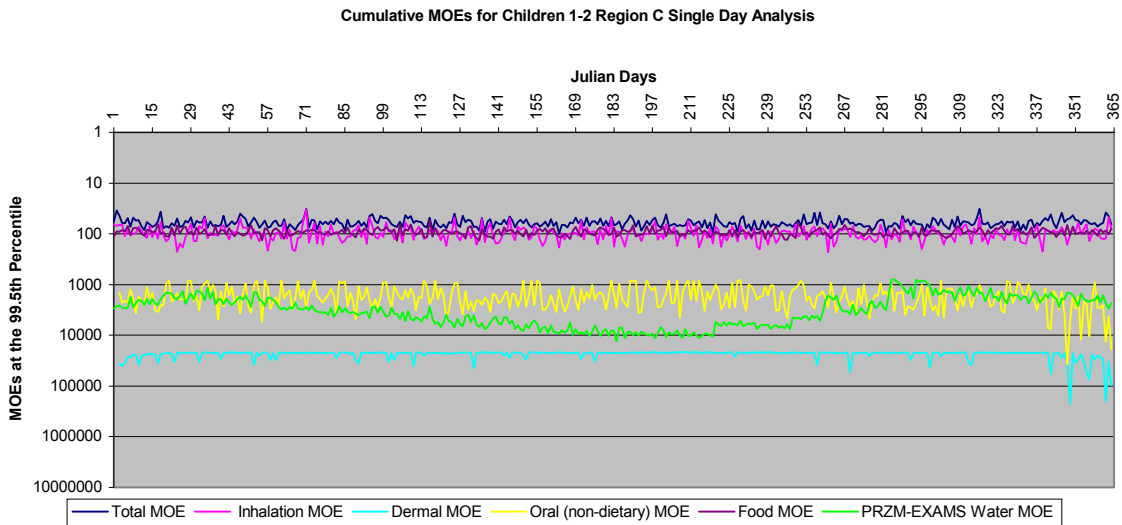
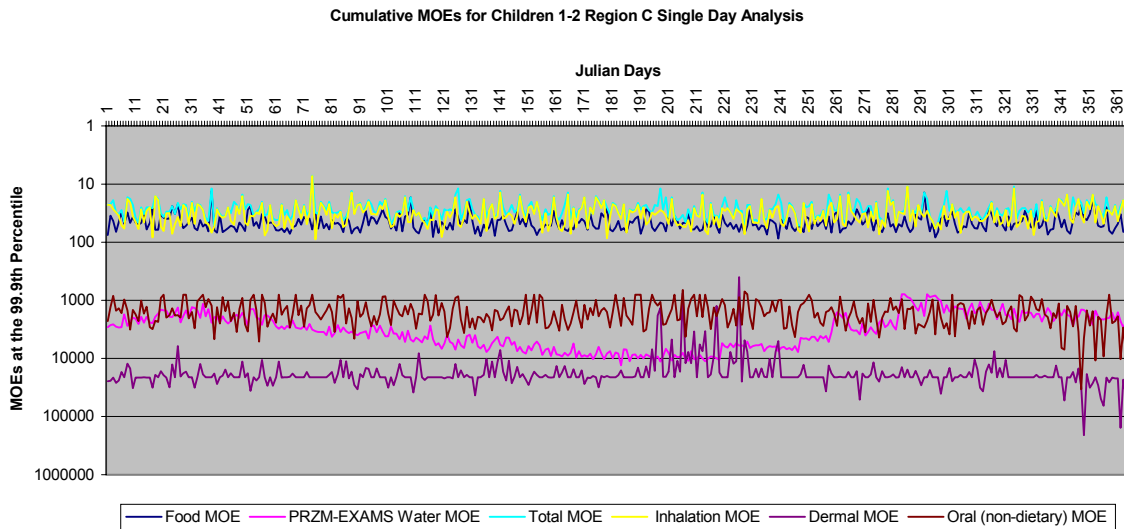


Figure III.L.2-4. Cumulative MOEs for Children 1-2 Region C 1-Day Analysis at 99.9th Percentile



No single value in the graphs above should be used to independently arrive at the interpretation of the results. A more detailed description of the graphs are presented in the Risk Characterization section (Section I.H).

Figure III.L.2-5. Cumulative MOEs for Children 1-2 Region C 7-Day Analysis at 95th Percentile

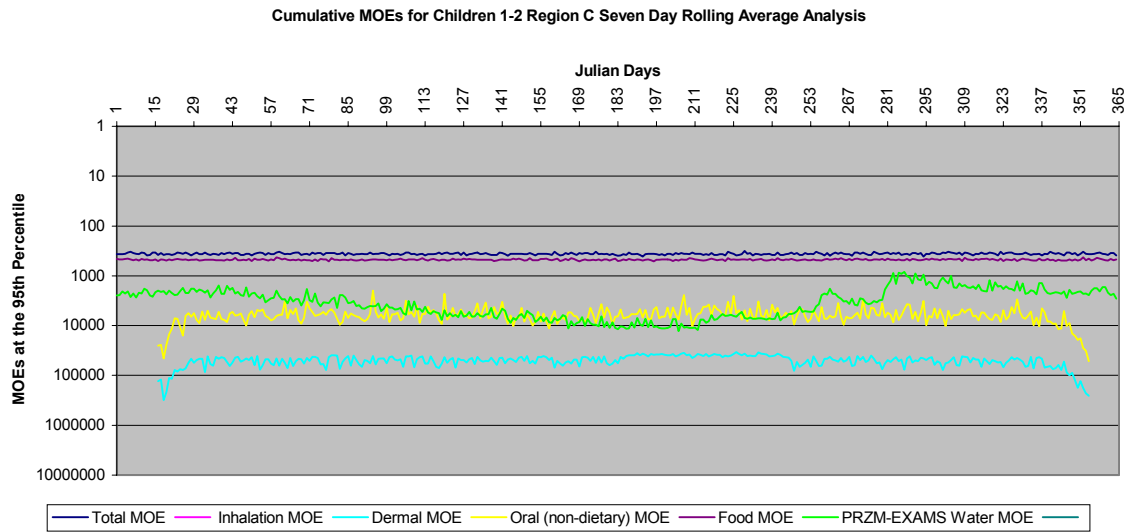
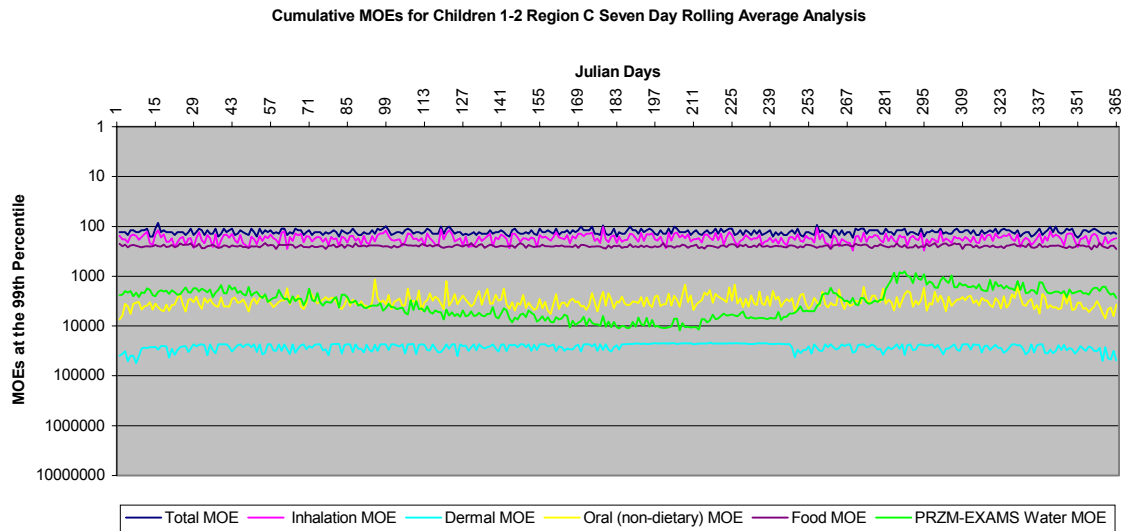


Figure III.L.2-6. Cumulative MOEs for Children 1-2 Region C 7-Day Analysis at 99th Percentile



No single value in the graphs above should be used to independently arrive at the interpretation of the results. A more detailed description of the graphs are presented in the Risk Characterization section (Section I.H).

Figure III.L.2-7. Cumulative MOEs for Children 1-2 Region C 7-Day Analysis at 99.5th Percentile

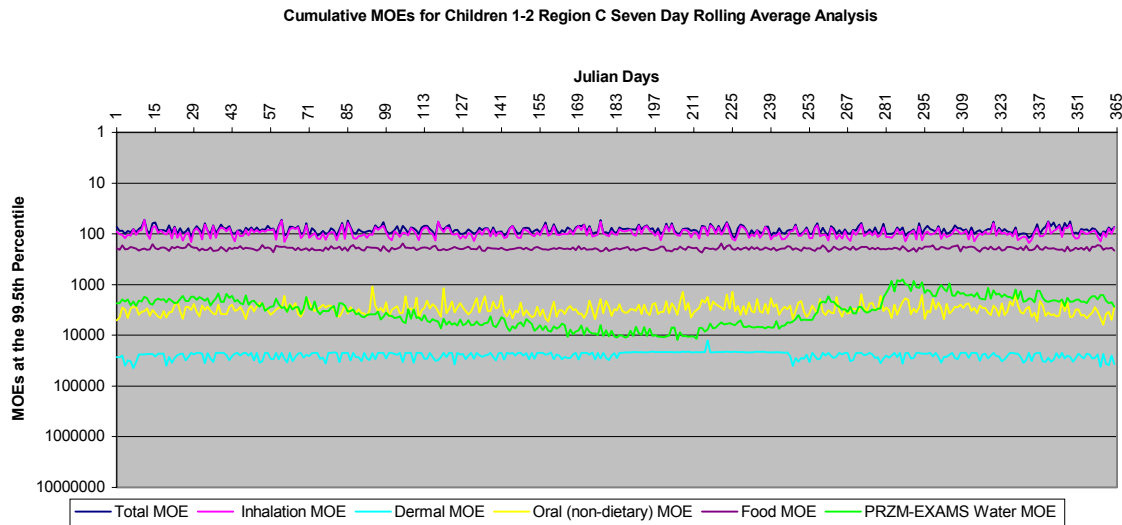
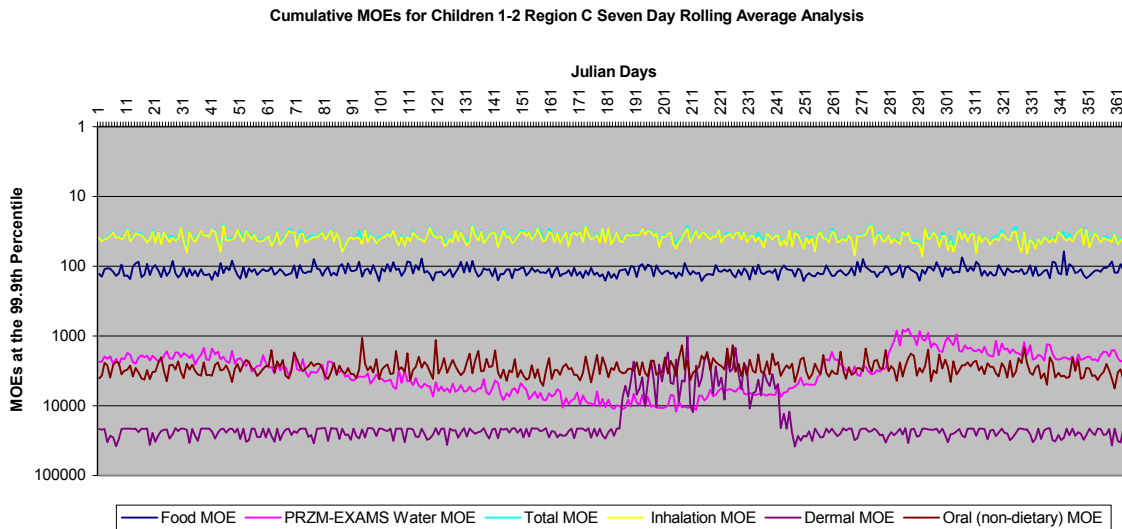


Figure III.L.2-8. Cumulative MOEs for Children 1-2 Region C 7-Day Analysis at 99.9th Percentile



No single value in the graphs above should be used to independently arrive at the interpretation of the results. A more detailed description of the graphs are presented in the Risk Characterization section (Section I.H).

Figure III.L.2-9. Cumulative MOEs for Children 3-5 Region C 1-Day Analysis at 95th Percentile

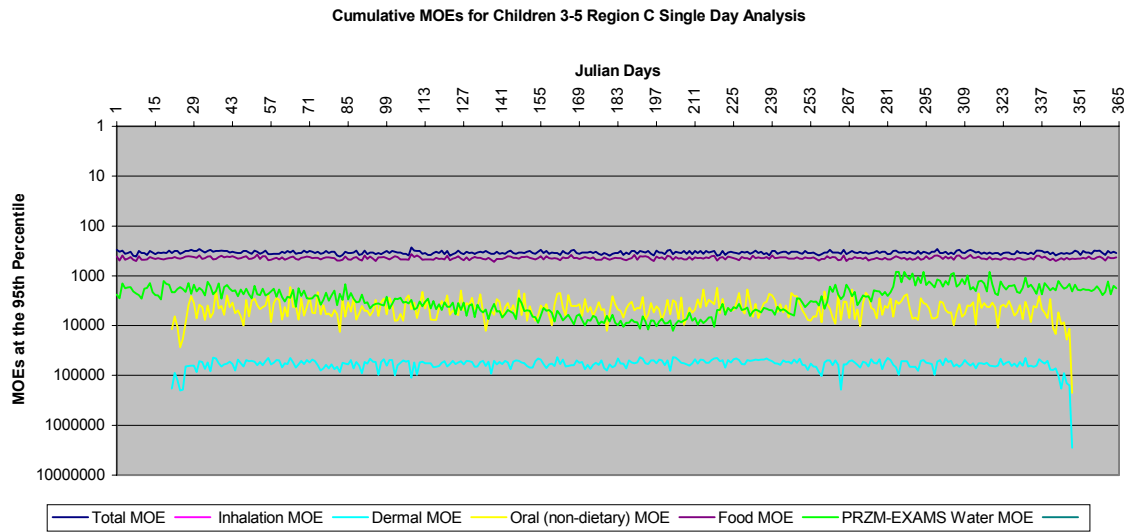
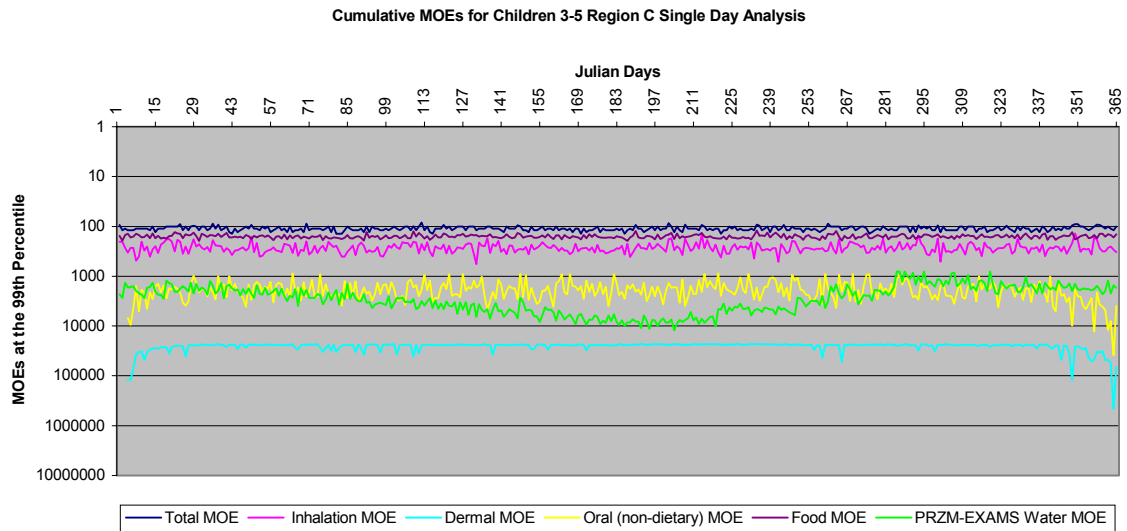


Figure III.L.2-10. Cumulative MOEs for Children 3-5 Region C 1-Day Analysis at 99th Percentile



No single value in the graphs above should be used to independently arrive at the interpretation of the results. A more detailed description of the graphs are presented in the Risk Characterization section (Section I.H).

Figure III.L.2-11. Cumulative MOEs for Children 3-5 Region C 1-Day Analysis at 99.5th Percentile

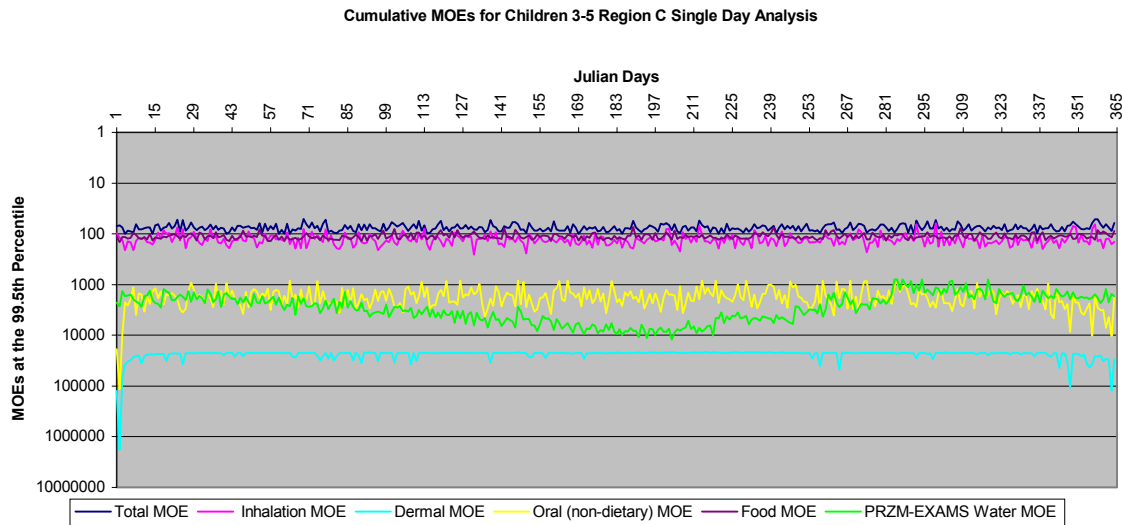
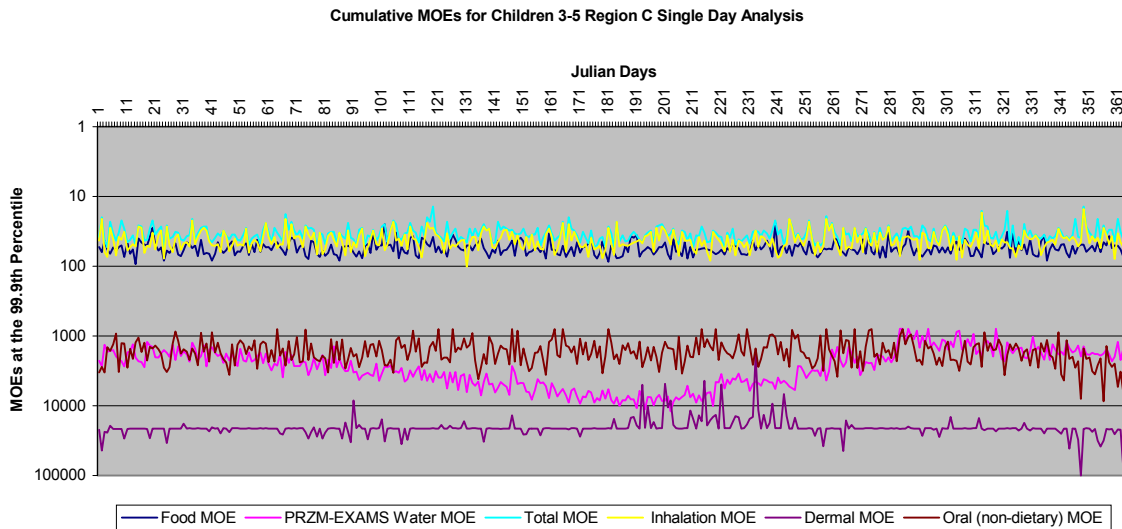


Figure III.L.2-12. Cumulative MOEs for Children 3-5 Region C 1-Day Analysis at 99.9th Percentile



No single value in the graphs above should be used to independently arrive at the interpretation of the results. A more detailed description of the graphs are presented in the Risk Characterization section (Section I.H).

Figure III.L.2-13. Cumulative MOEs for Children 3-5 Region C 7-Day Analysis at 95th Percentile

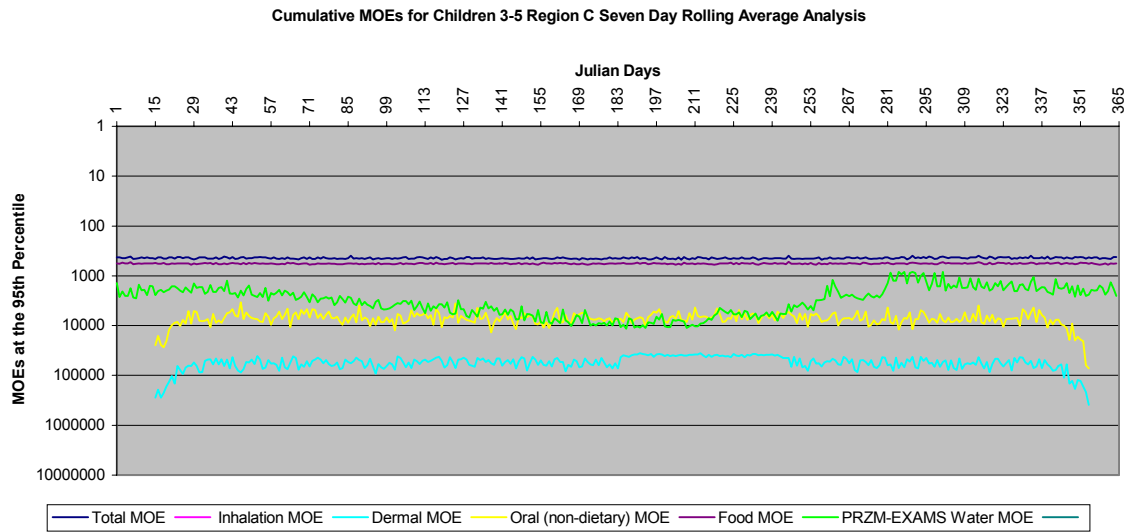
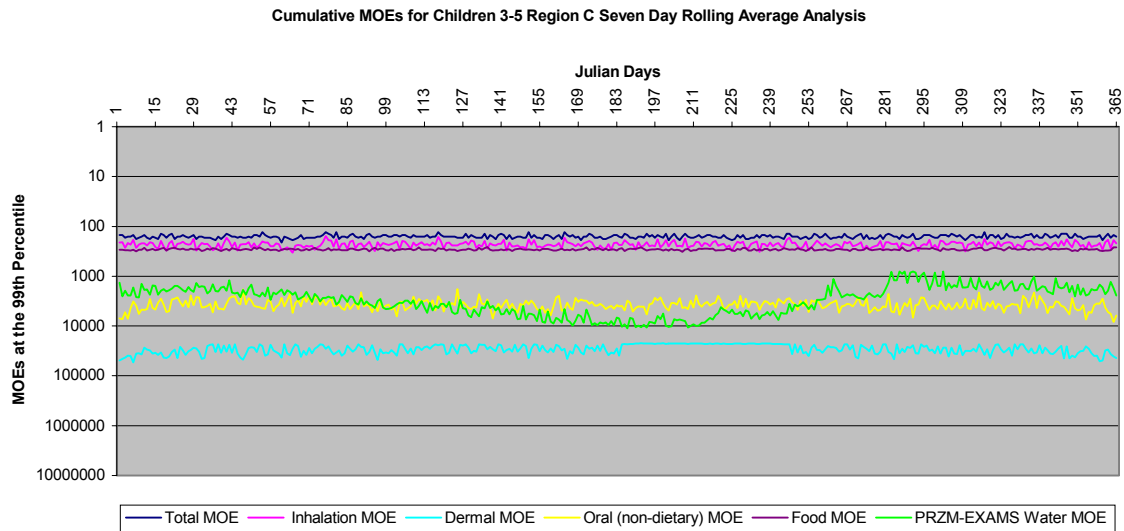


Figure III.L.2-14. Cumulative MOEs for Children 3-5 Region C 7-Day Analysis at 99th Percentile



No single value in the graphs above should be used to independently arrive at the interpretation of the results. A more detailed description of the graphs are presented in the Risk Characterization section (Section I.H).

Figure III.L.2-15. Cumulative MOEs for Children 3-5 Region C 7-Day Analysis at 99.5th Percentile

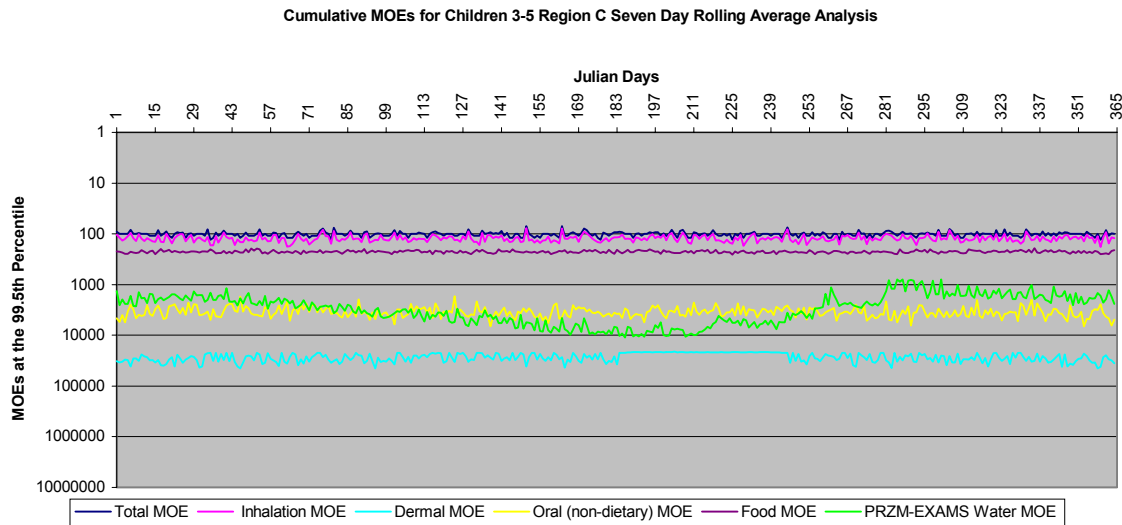
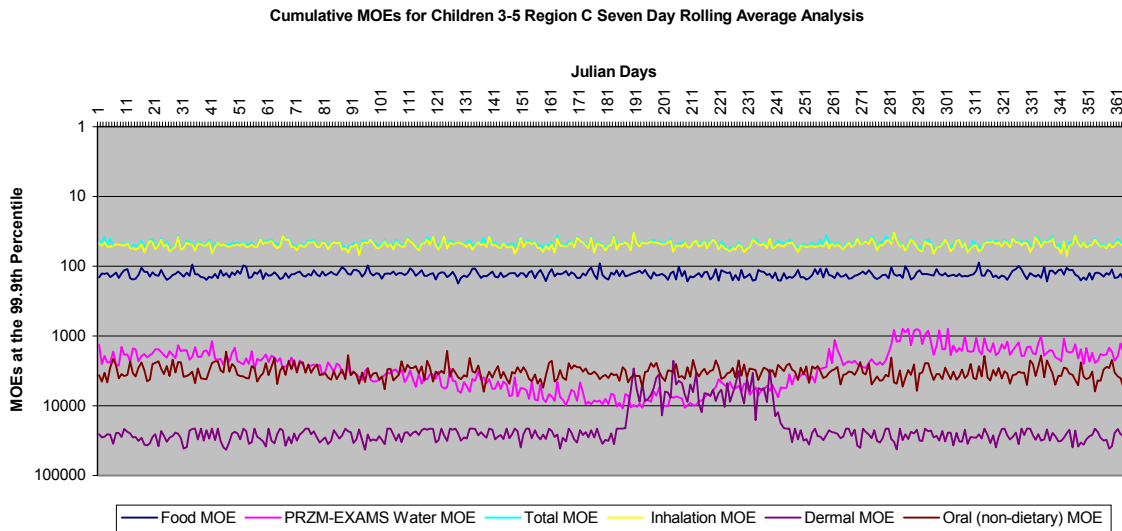


Figure III.L.2-16. Cumulative MOEs for Children 3-5 Region C 7-Day Analysis at 99.9th Percentile



No single value in the graphs above should be used to independently arrive at the interpretation of the results. A more detailed description of the graphs are presented in the Risk Characterization section (Section I.H).