

III. Revised OP Cumulative Risk Assessment Appendices

K. Appendix for Region B Northwest Regional Assessment

2. Region B Cumulative Assessment Outputs for Children

Figure III.K.2-1. Cumulative MOEs for Children 1-2 Region B 1-Day Analysis at 95th Percentile

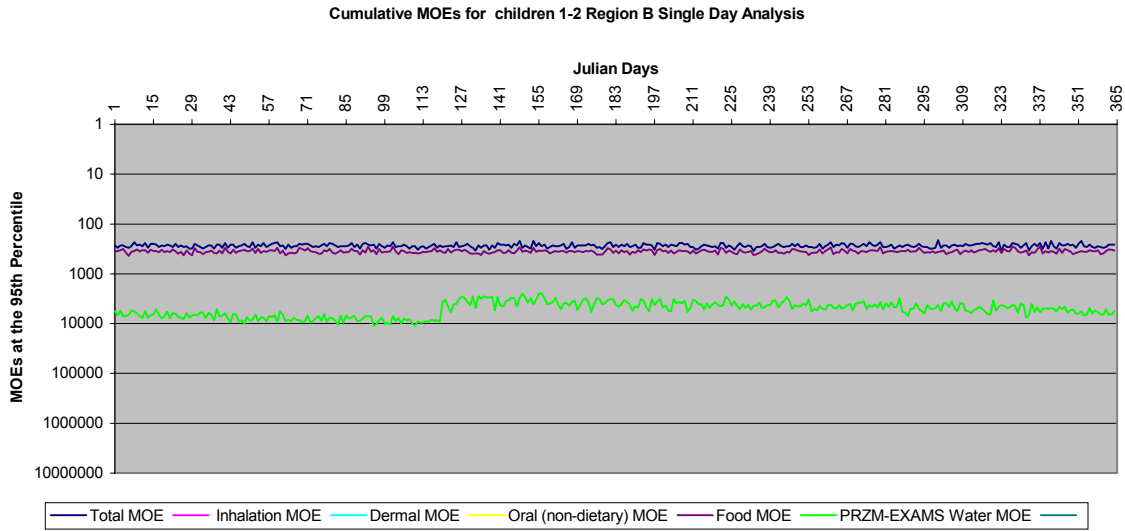
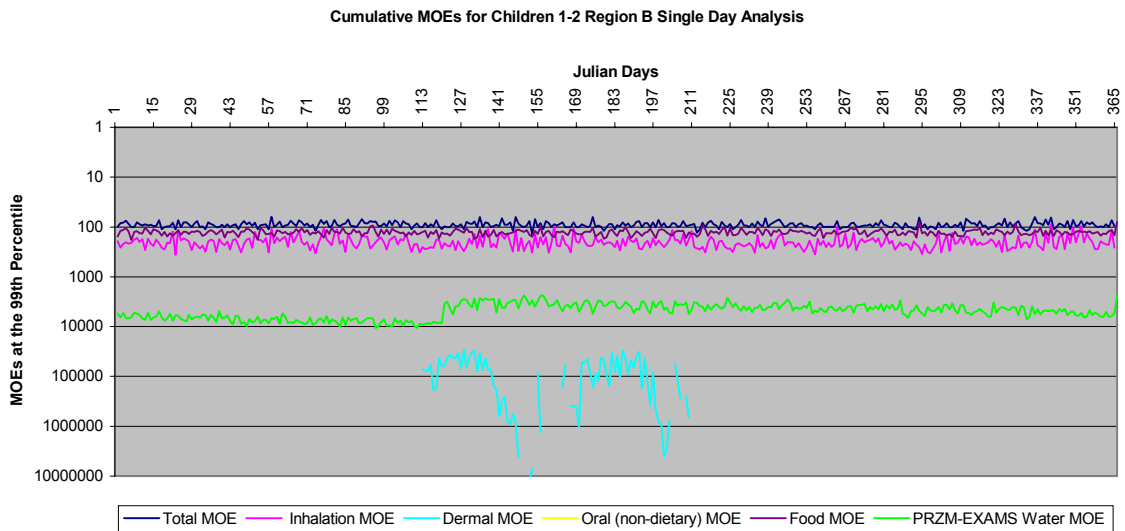


Figure III.K.2-2. Cumulative MOEs for Children 1-2 Region B 1-Day Analysis at 99th Percentile



No single value in the graphs above should be used to independently arrive at the interpretation of the results. A more detailed description of the graphs are presented in the Risk Characterization section (Section I.H).

Figure III.K.2-3. Cumulative MOEs for Children 1-2 Region B 1-Day Analysis at 99.5th Percentile

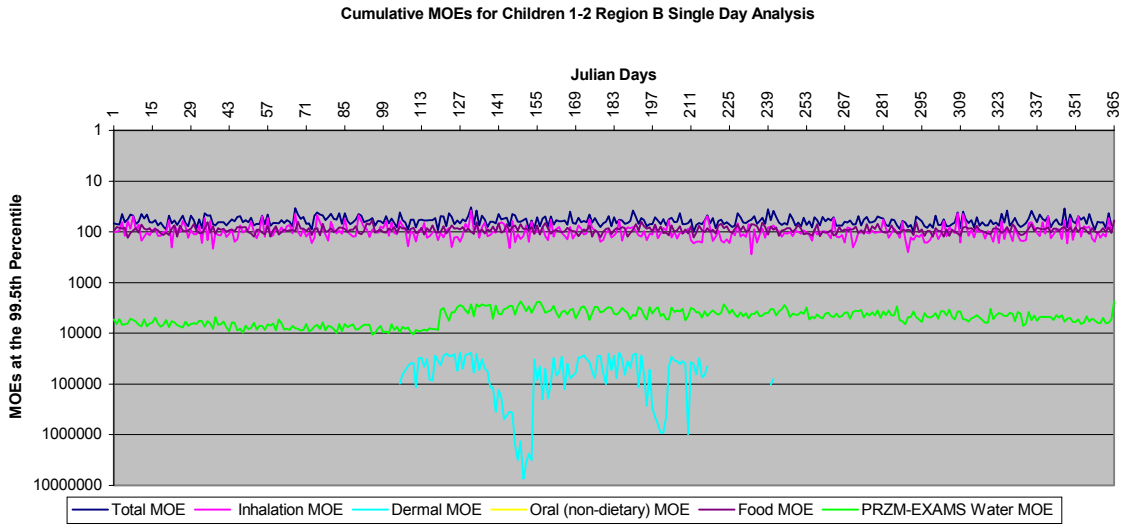
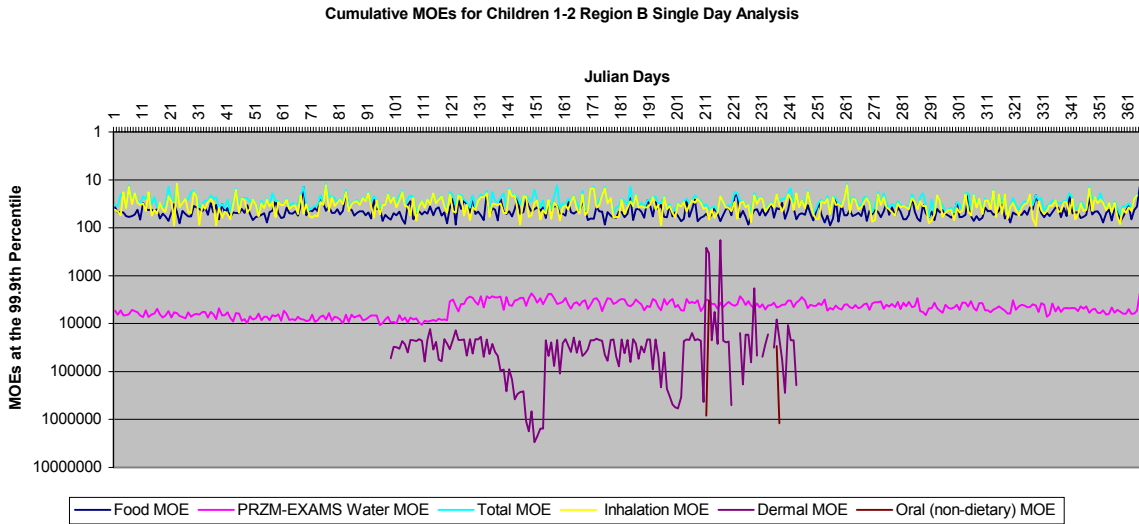


Figure III.K.2-4. Cumulative MOEs for Children 1-2 Region B 1-Day Analysis at 99.9th Percentile



No single value in the graphs above should be used to independently arrive at the interpretation of the results. A more detailed description of the graphs are presented in the Risk Characterization section (Section I.H).

Figure III.K.2-5. Cumulative MOEs for Children 1-2 Region B 7-Day Analysis at 95th Percentile

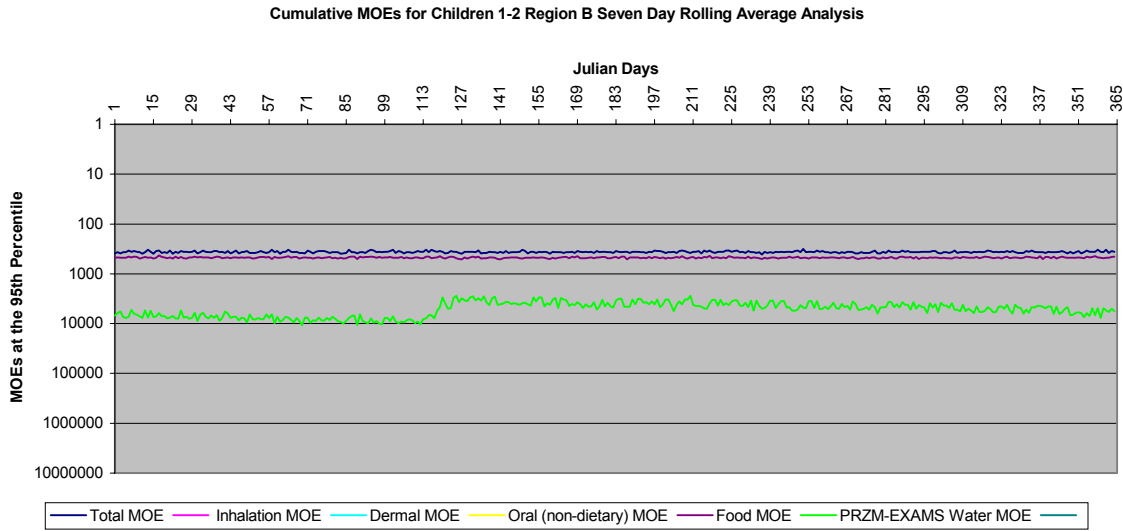
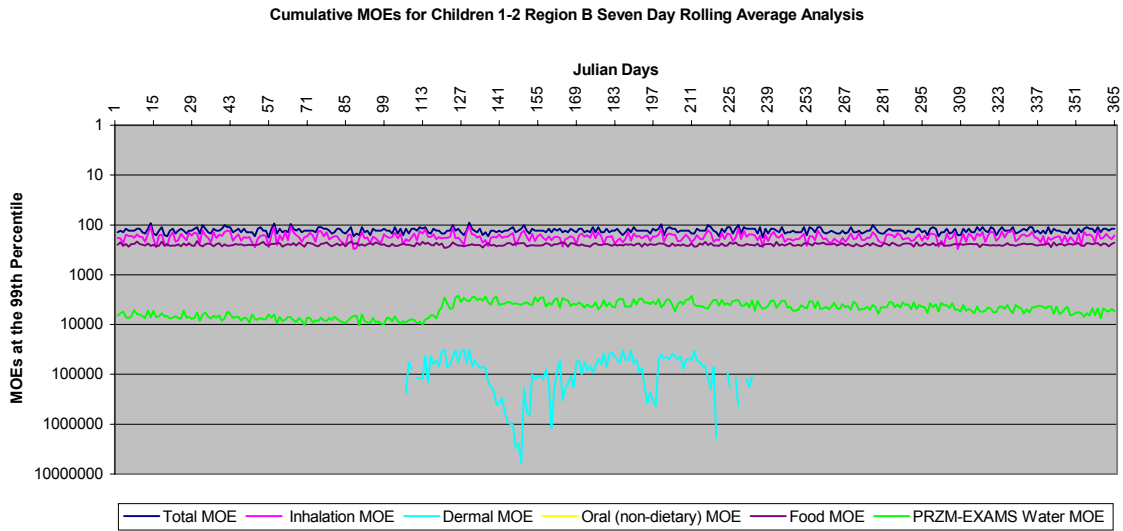


Figure III.K.2-6. Cumulative MOEs for Children 1-2 Region B 7-Day Analysis at 99th Percentile



No single value in the graphs above should be used to independently arrive at the interpretation of the results. A more detailed description of the graphs are presented in the Risk Characterization section (Section I.H).

Figure III.K.2-7. Cumulative MOEs for Children 1-2 Region B 7-Day Analysis at 99.5th Percentile

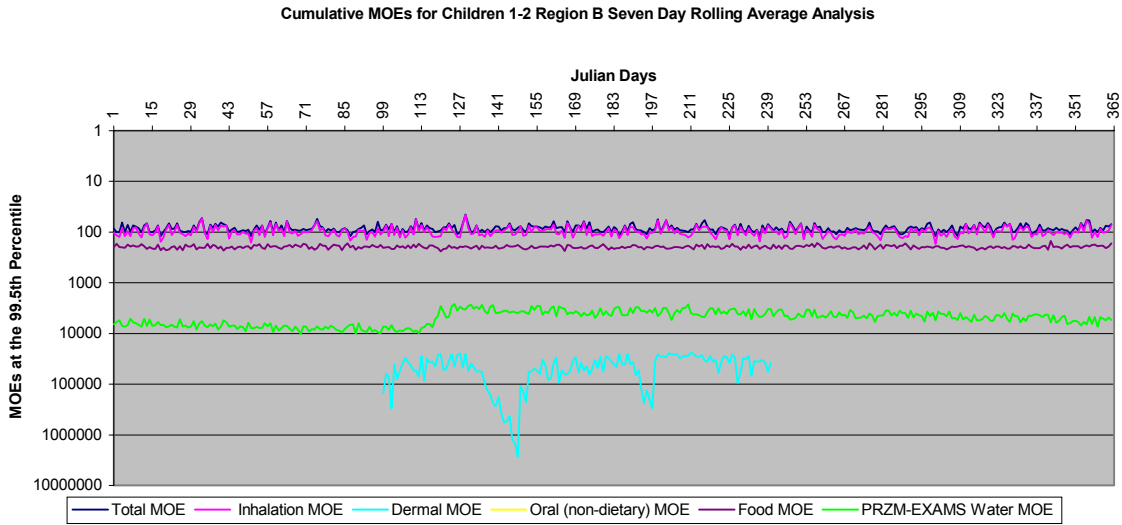
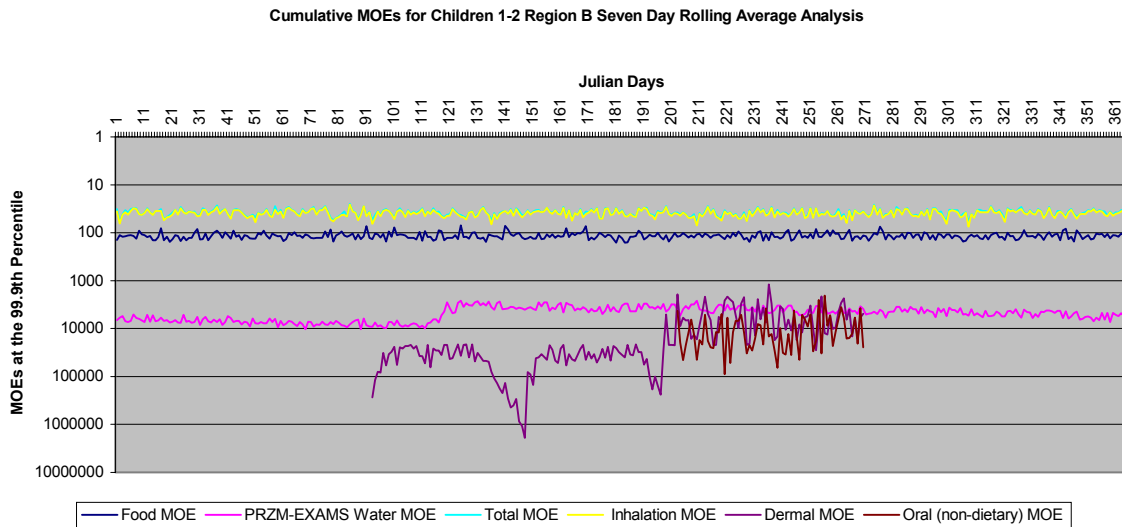


Figure III.K.2-8. Cumulative MOEs for Children 1-2 Region B 7-Day Analysis at 99.9th Percentile



No single value in the graphs above should be used to independently arrive at the interpretation of the results. A more detailed description of the graphs are presented in the Risk Characterization section (Section I.H).

Figure III.K.2-9. Cumulative MOEs for Children 3-5 Region B 1-Day Analysis at 95th Percentile

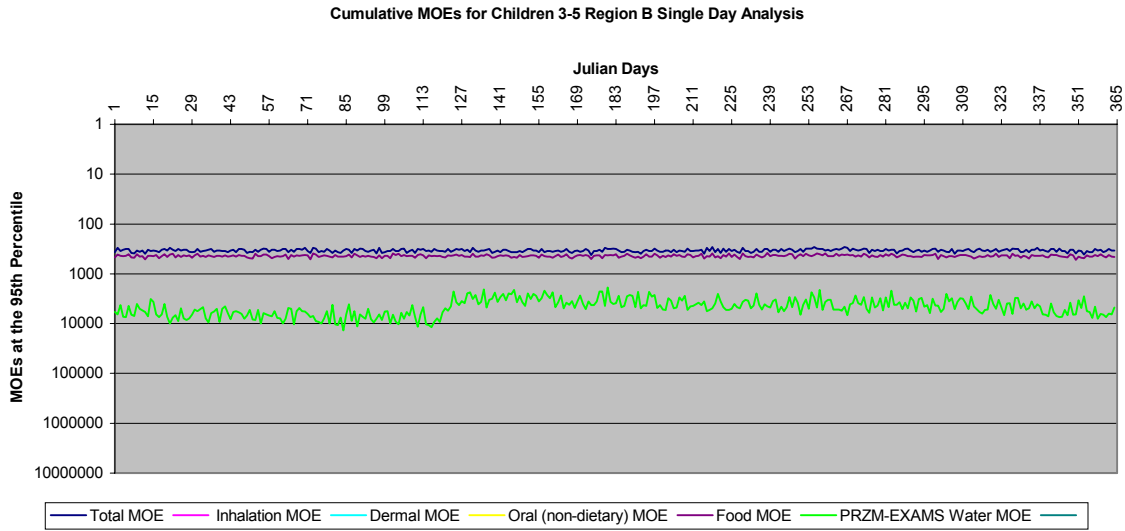
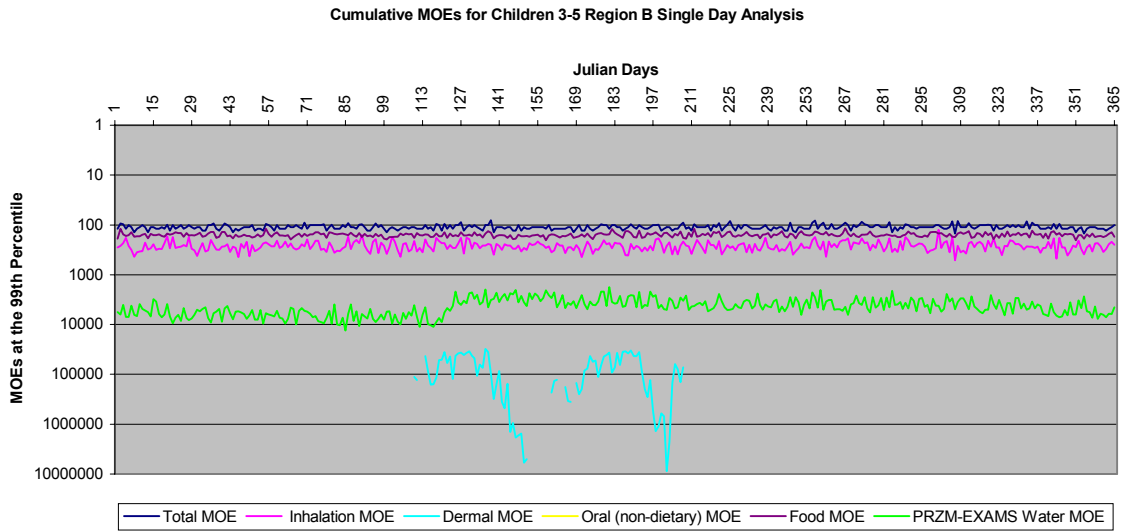


Figure III.K.2-10. Cumulative MOEs for Children 3-5 Region B 1-Day Analysis at 99th Percentile



No single value in the graphs above should be used to independently arrive at the interpretation of the results. A more detailed description of the graphs are presented in the Risk Characterization section (Section I.H).

Figure III.K.2-11. Cumulative MOEs for Children 3-5 Region B 1-Day Analysis at 99.5th Percentile

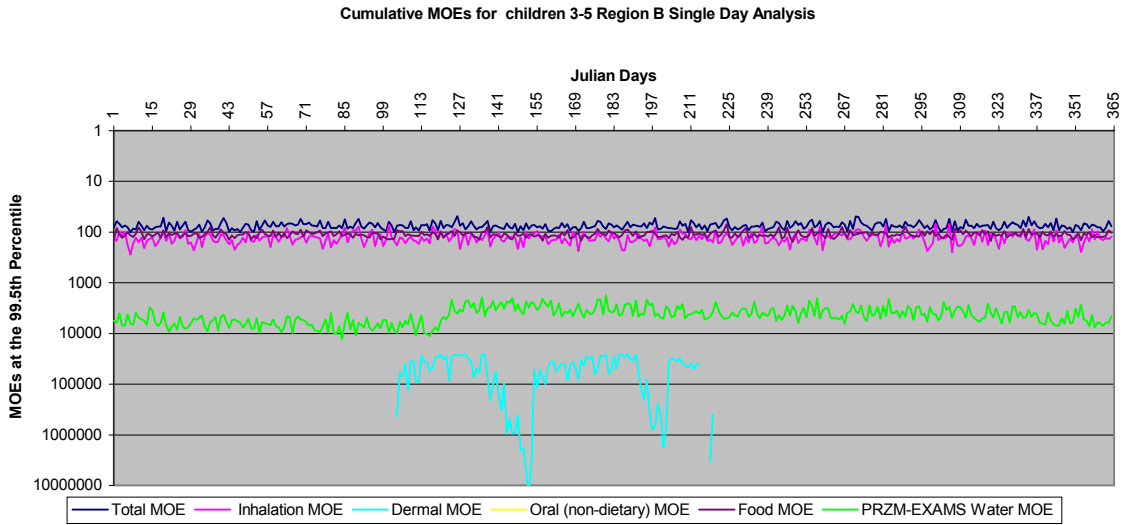
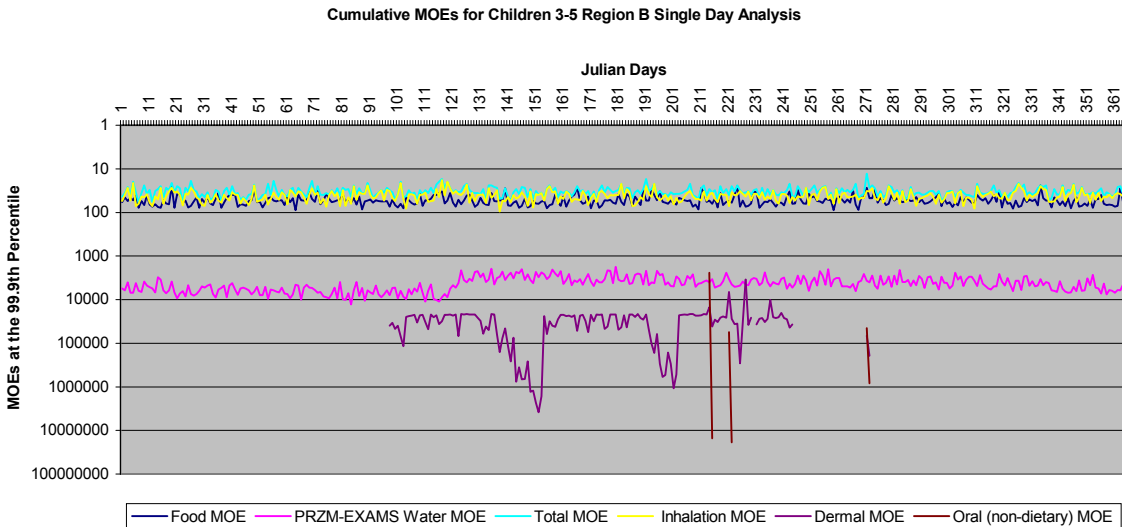


Figure III.K.2-12. Cumulative MOEs for Children 3-5 Region B 1-Day Analysis at 99.9th Percentile



No single value in the graphs above should be used to independently arrive at the interpretation of the results. A more detailed description of the graphs are presented in the Risk Characterization section (Section I.H).

Figure III.K.2-13. Cumulative MOEs for Children 3-5 Region B 7-Day Analysis at 95th Percentile

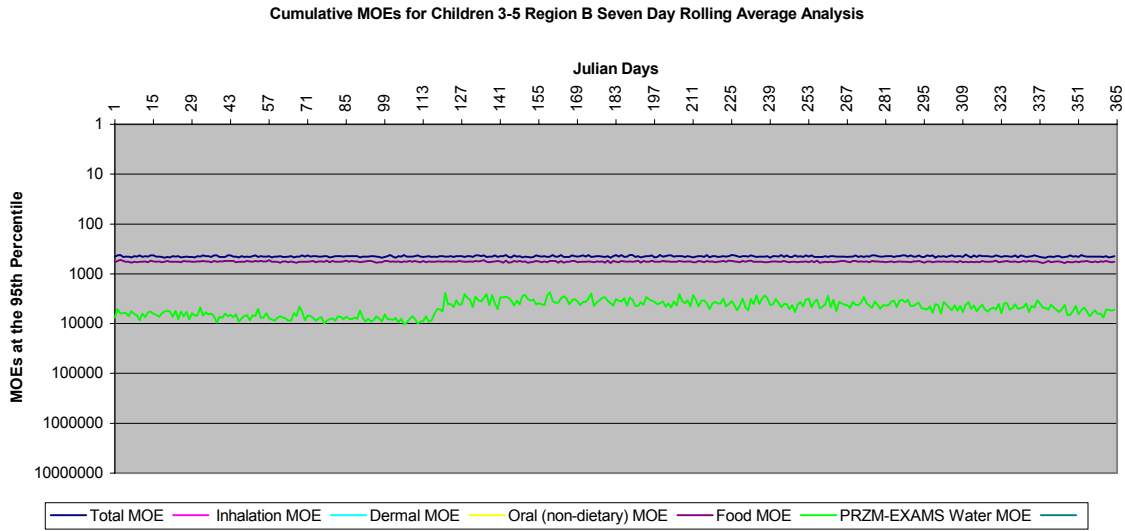
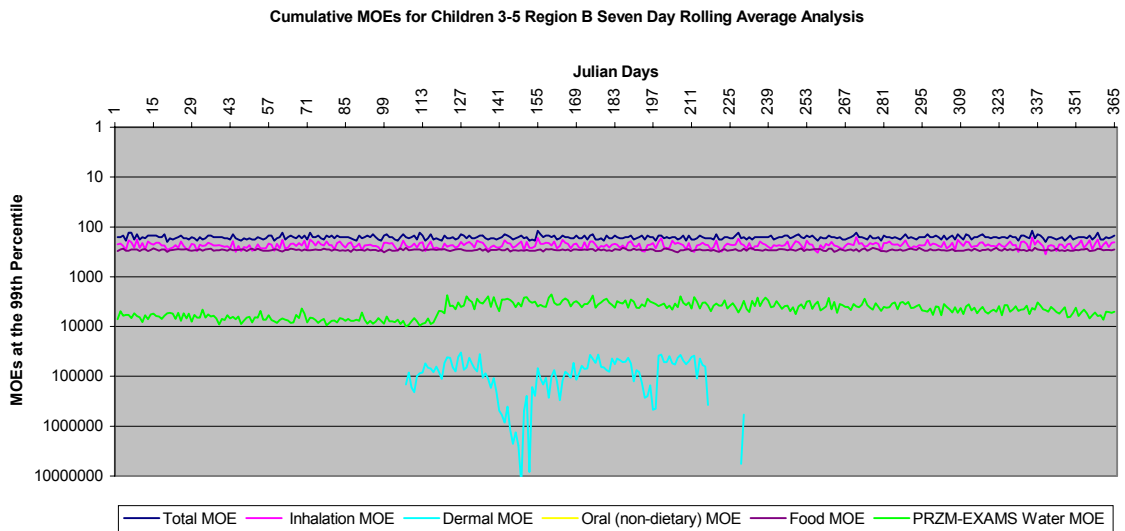


Figure III.K.2-14. Cumulative MOEs for Children 3-5 Region B 7-Day Analysis at 99th Percentile



No single value in the graphs above should be used to independently arrive at the interpretation of the results. A more detailed description of the graphs are presented in the Risk Characterization section (Section I.H).

Figure III.K.2-15. Cumulative MOEs for Children 3-5 Region B 7-Day Analysis at 99.5th Percentile

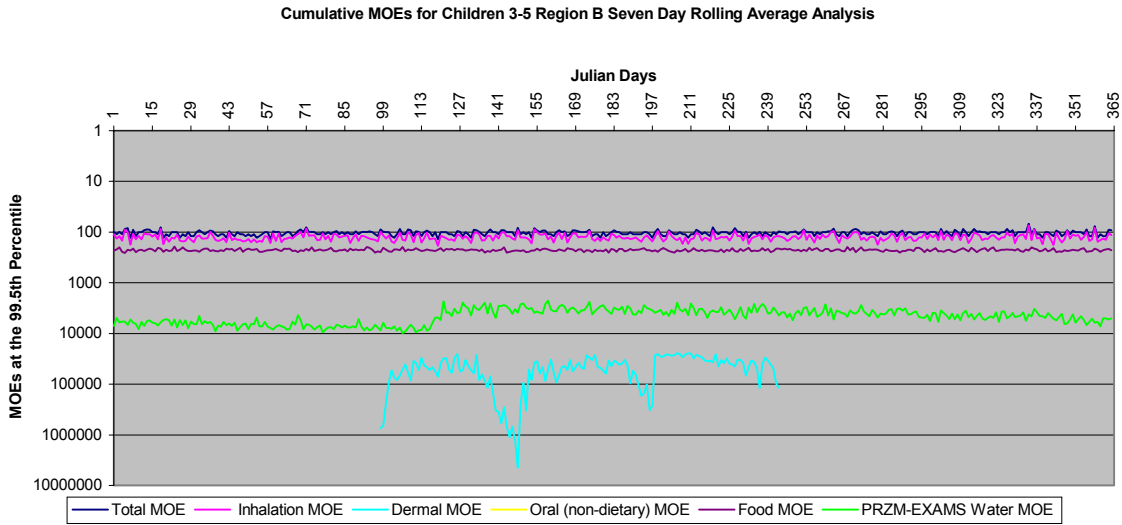
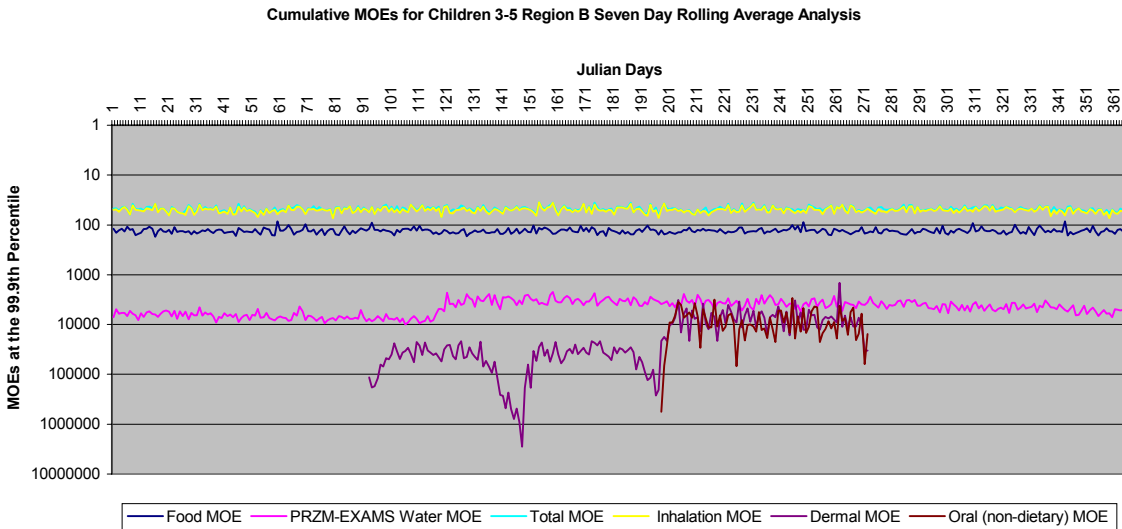


Figure III.K.2-16. Cumulative MOEs for Children 3-5 Region B 7-Day Analysis at 99.9th Percentile



No single value in the graphs above should be used to independently arrive at the interpretation of the results. A more detailed description of the graphs are presented in the Risk Characterization section (Section I.H).