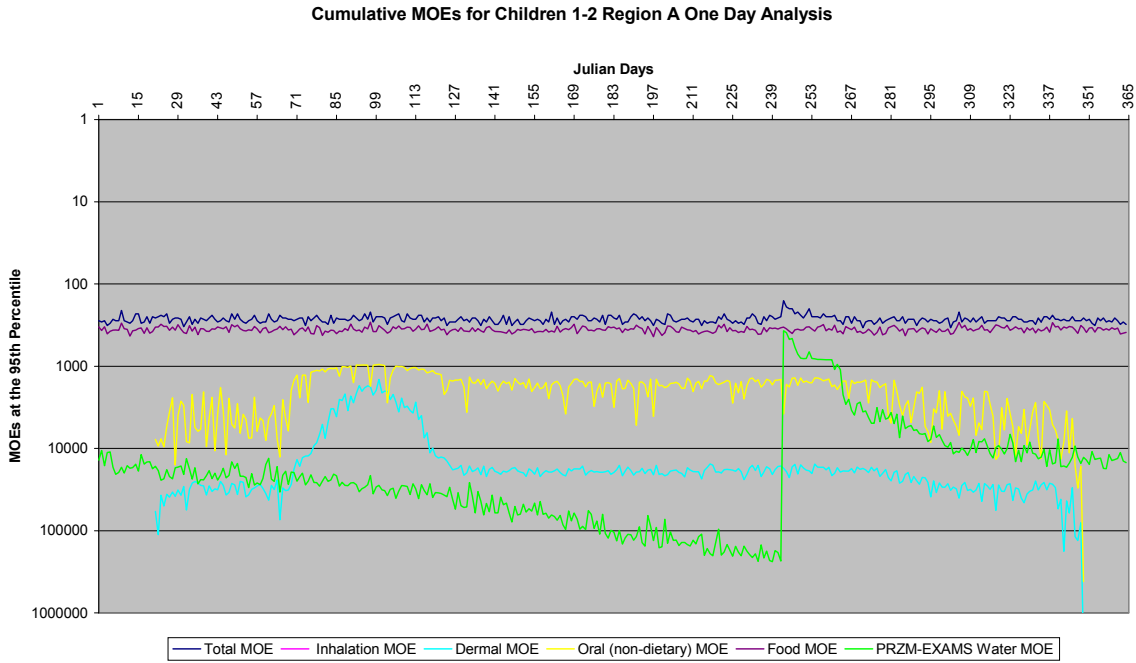


**III. Revised OP Cumulative Risk Assessment Appendices**

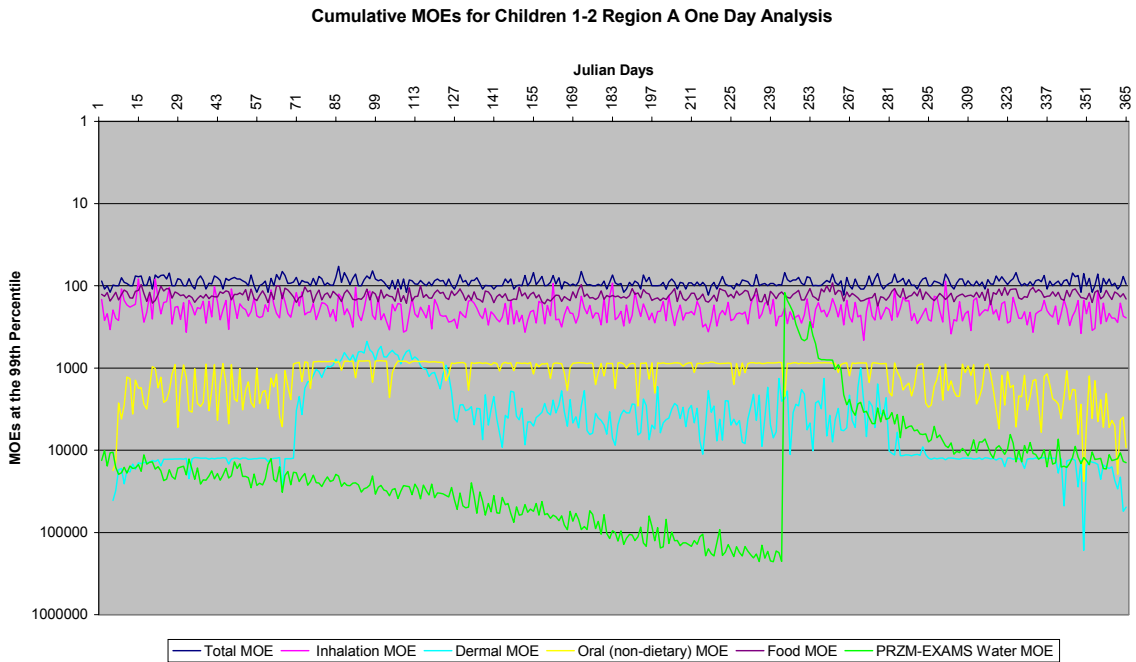
**J. Appendix for Region A (Florida) Regional Assessment**

**2. Region A Cumulative Assessment Outputs for Children**

**Figure III.J.2-1. Cumulative MOEs for Children 1-2 Region A 1-Day Analysis at 95<sup>th</sup> Percentile**

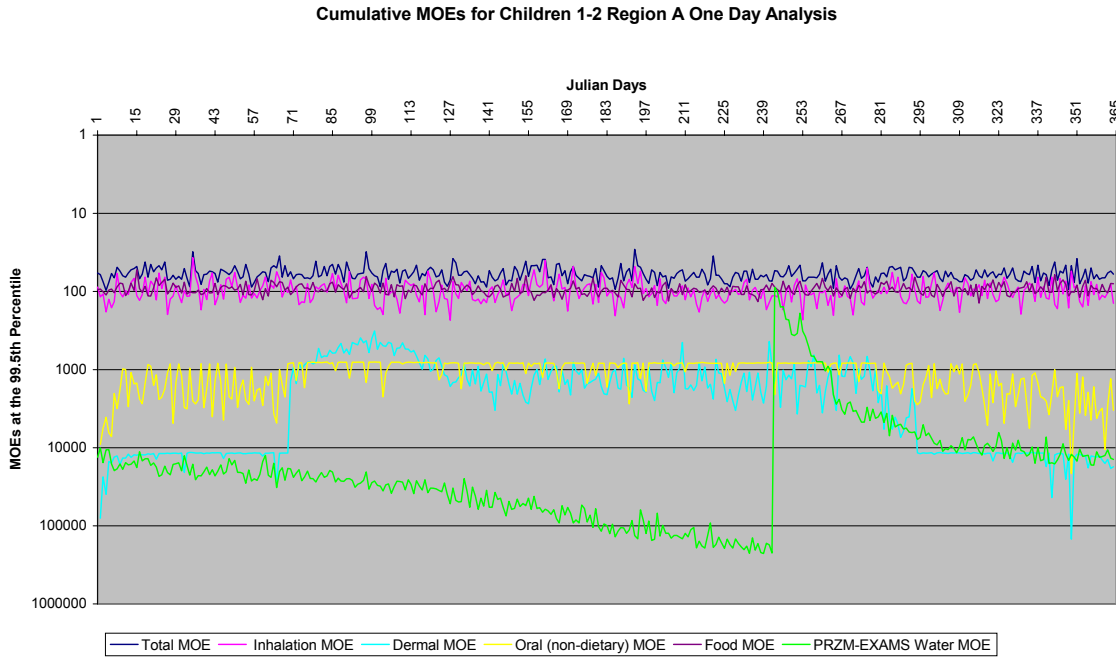


**Figure III.J.2-2. Cumulative MOEs for Children 1-2 Region A 1-Day Analysis at 99<sup>th</sup> Percentile**

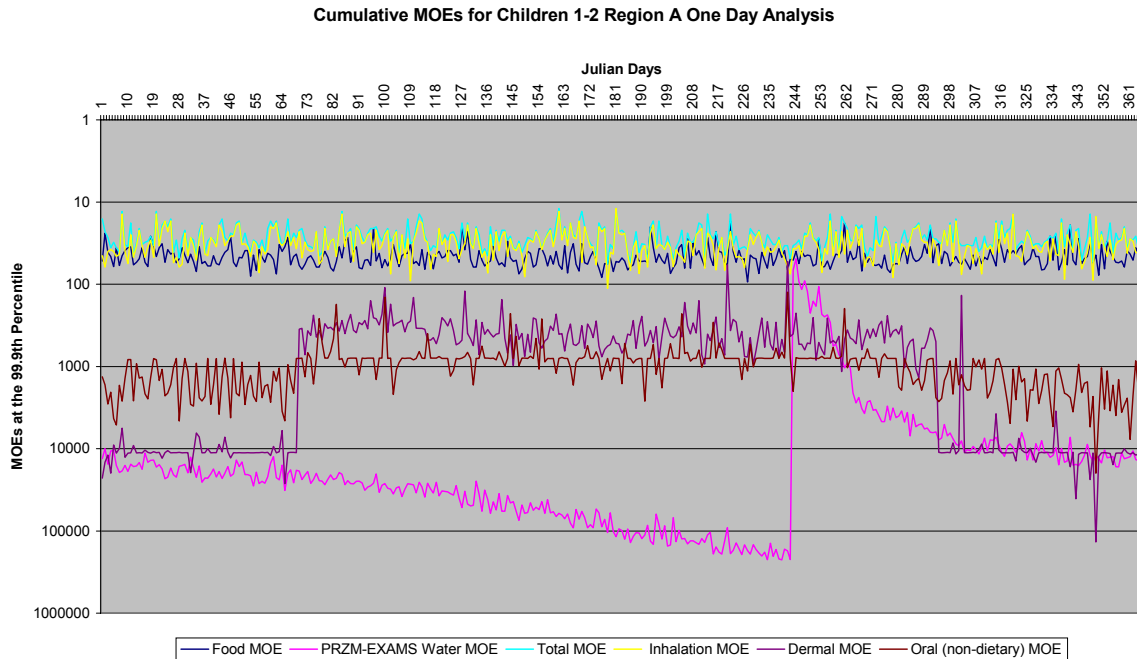


No single value in the graphs above should be used to independently arrive at the interpretation of the results. A more detailed description of the graphs are presented in the Risk Characterization section (Section I.H).

**Figure III.J.2-3. Cumulative MOEs for Children 1-2 Region A 1-Day Analysis at 99.5<sup>th</sup> Percentile**



**Figure III.J.2-4. Cumulative MOEs for Children 1-2 Region A 1-Day Analysis at 99.9<sup>th</sup> Percentile**



No single value in the graphs above should be used to independently arrive at the interpretation of the results. A more detailed description of the graphs are presented in the Risk Characterization section (Section I.H).

Figure III.J.2-5. Cumulative MOEs for Children 1-2 Region A 7-Day Analysis at 95<sup>th</sup> Percentile

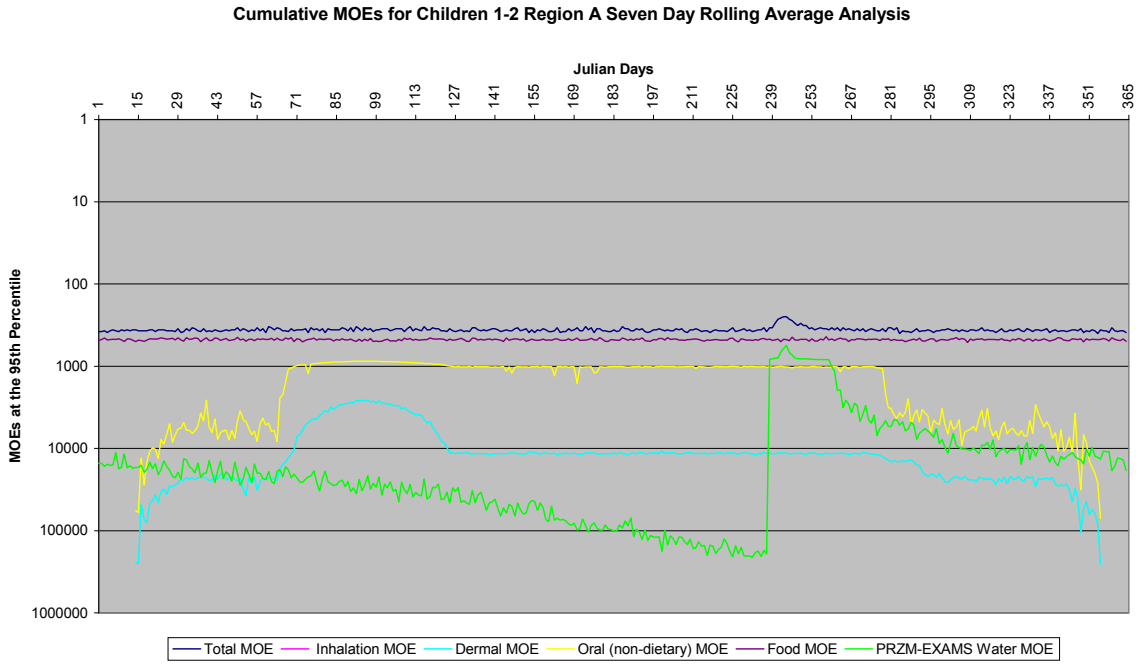
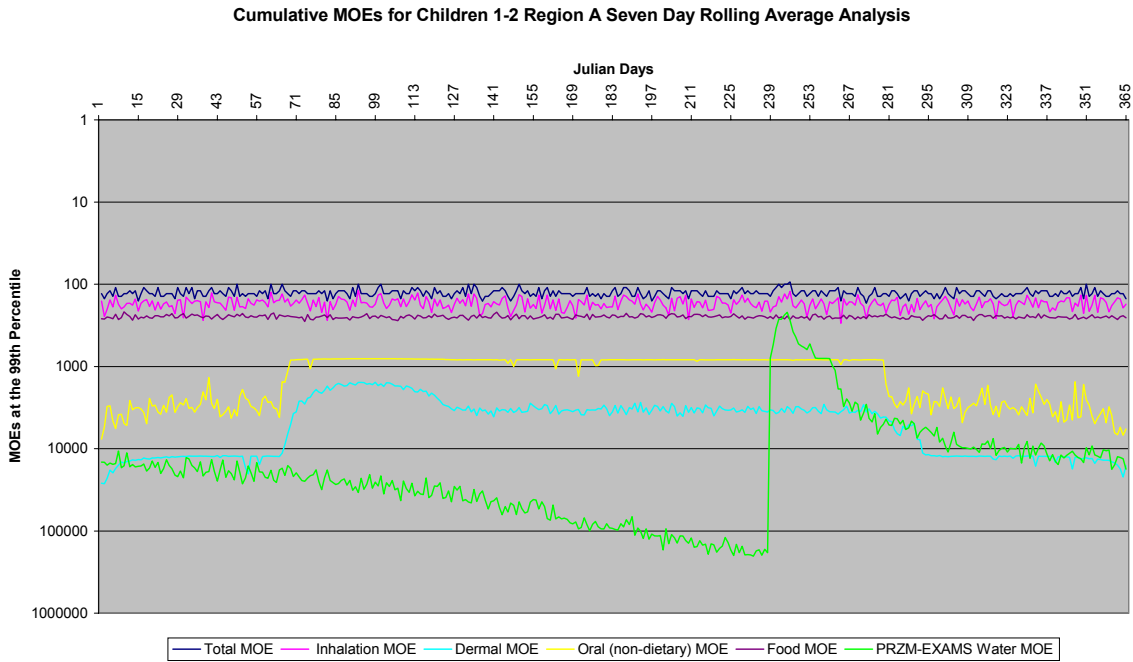
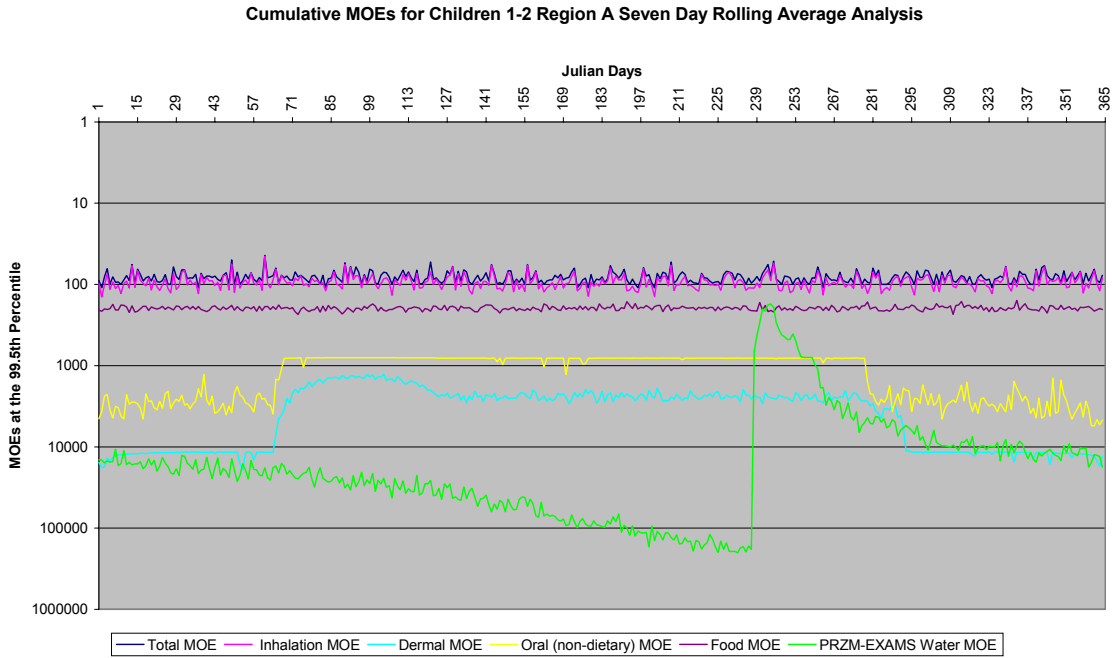


Figure III.J.2-6. Cumulative MOEs for Children 1-2 Region A 7-Day Analysis at 99<sup>th</sup> Percentile

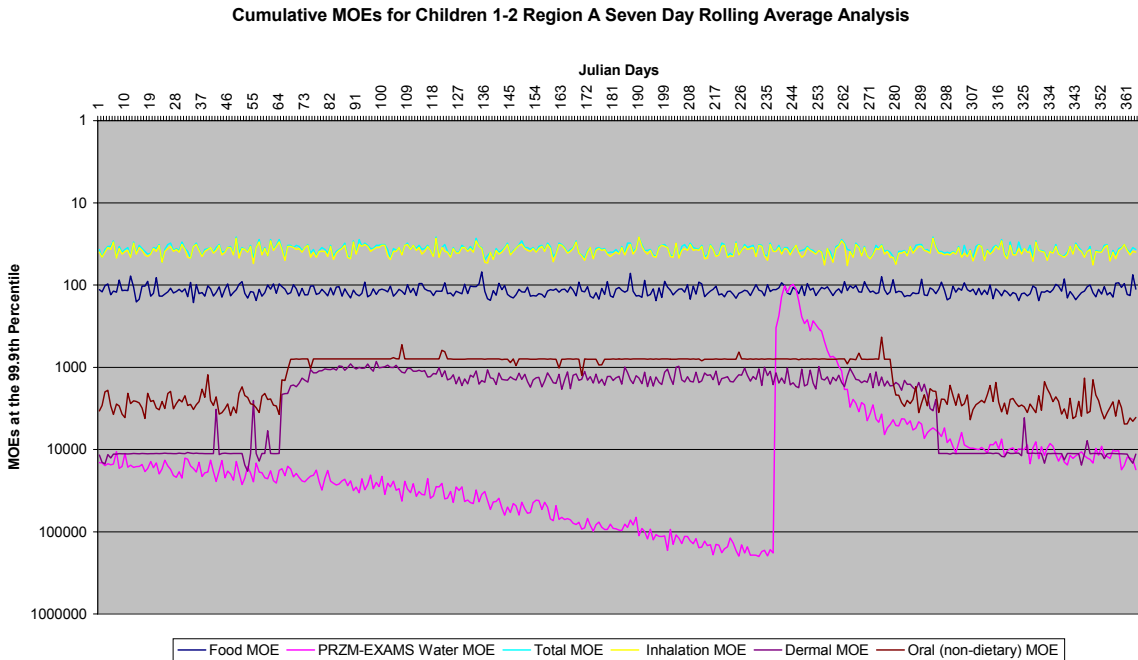


No single value in the graphs above should be used to independently arrive at the interpretation of the results. A more detailed description of the graphs are presented in the Risk Characterization section (Section I.H).

**Figure III.J.2-7. Cumulative MOEs for Children 1-2 Region A 7-Day Analysis at 99.5<sup>th</sup> Percentile**

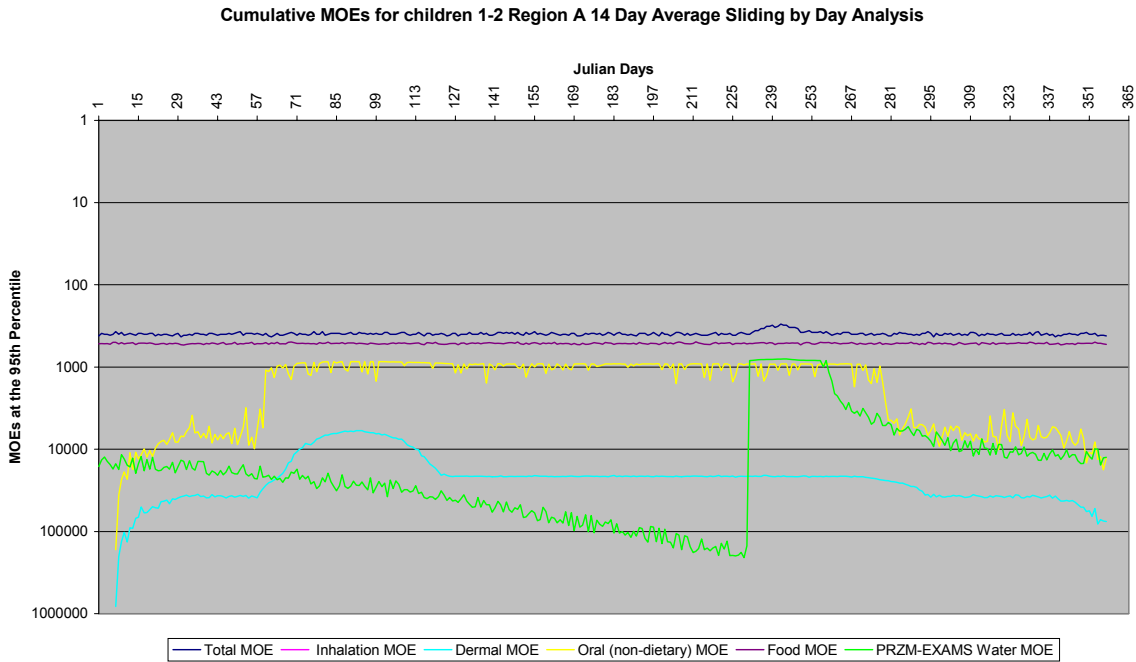


**Figure III.J.2-8. Cumulative MOEs for Children 1-2 Region A 7-Day Analysis at 99.9<sup>th</sup> Percentile**

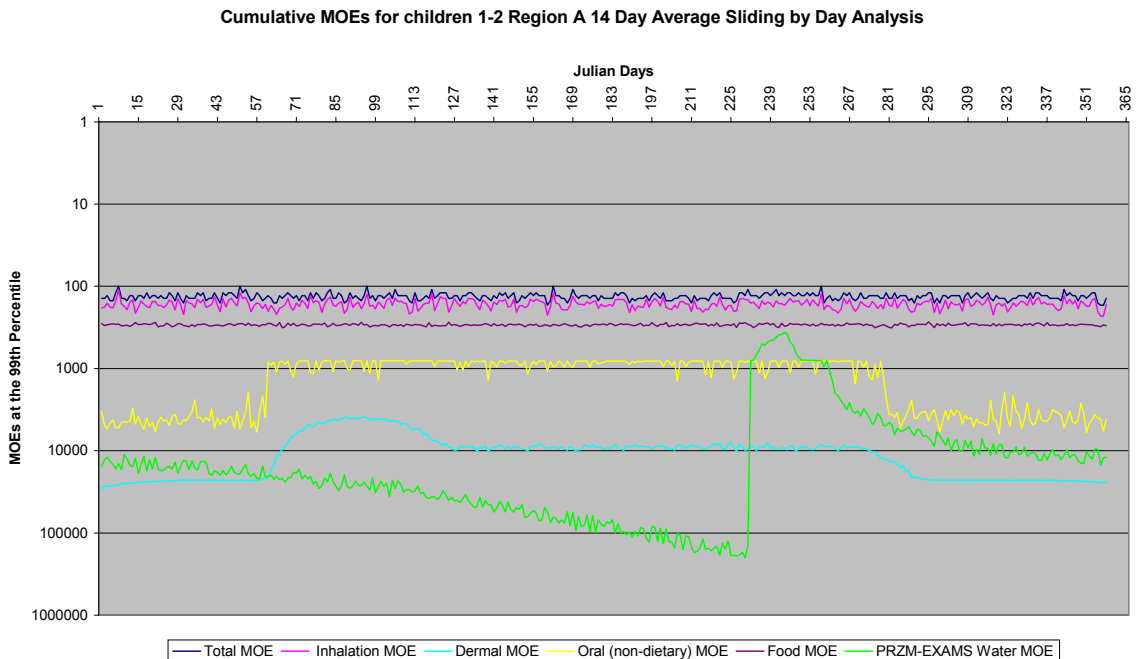


No single value in the graphs above should be used to independently arrive at the interpretation of the results. A more detailed description of the graphs are presented in the Risk Characterization section (Section I.H).

**Figure III.J.2-9. Cumulative MOEs for Children 1-2 Region A 14-Day Analysis at 95<sup>th</sup> Percentile**

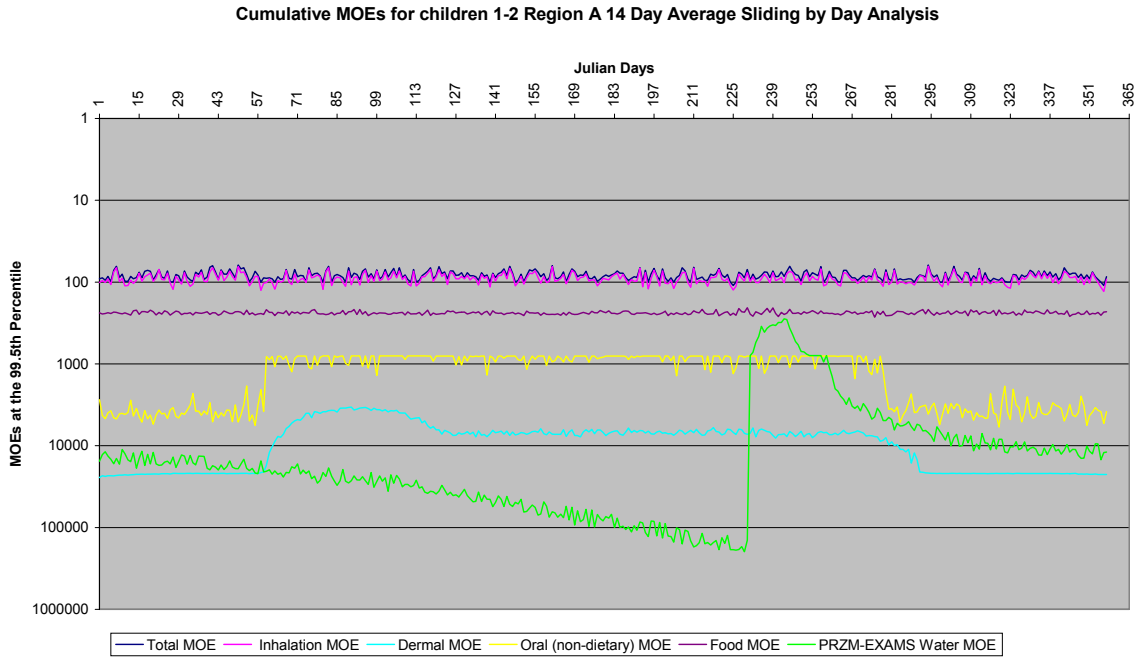


**Figure III.J.2-10. Cumulative MOEs for Children 1-2 Region A 14-Day Analysis at 99<sup>th</sup> Percentile**

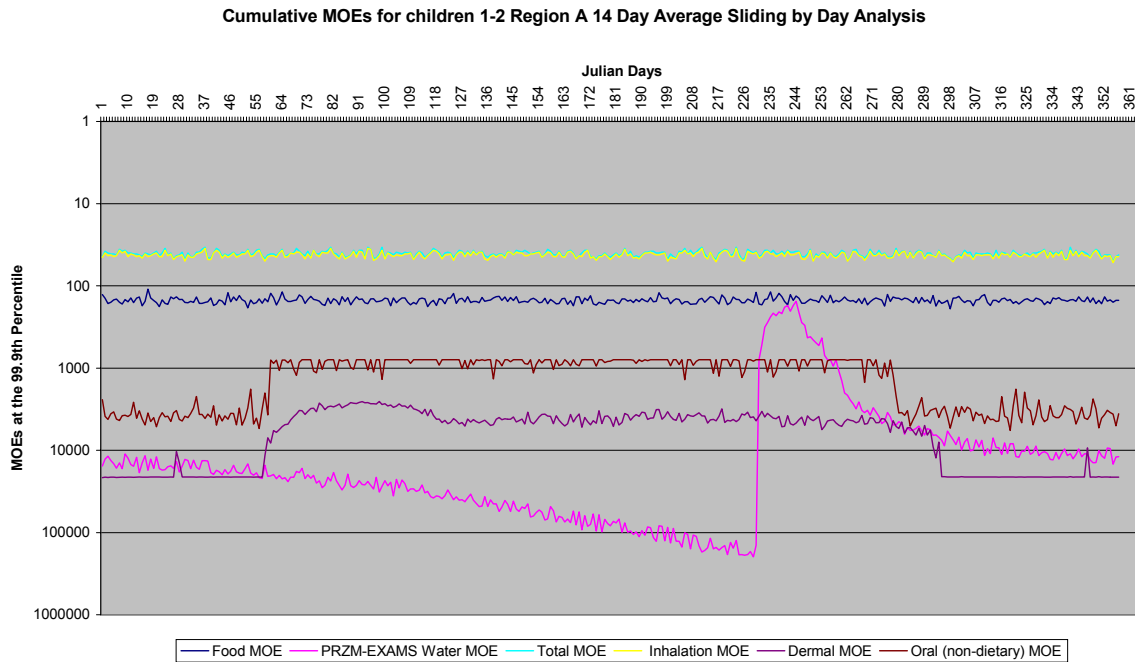


No single value in the graphs above should be used to independently arrive at the interpretation of the results. A more detailed description of the graphs are presented in the Risk Characterization section (Section I.H).

**Figure III.J.2-11. Cumulative MOEs for Children 1-2 Region A 14-Day Analysis at 99.5<sup>th</sup> Percentile**

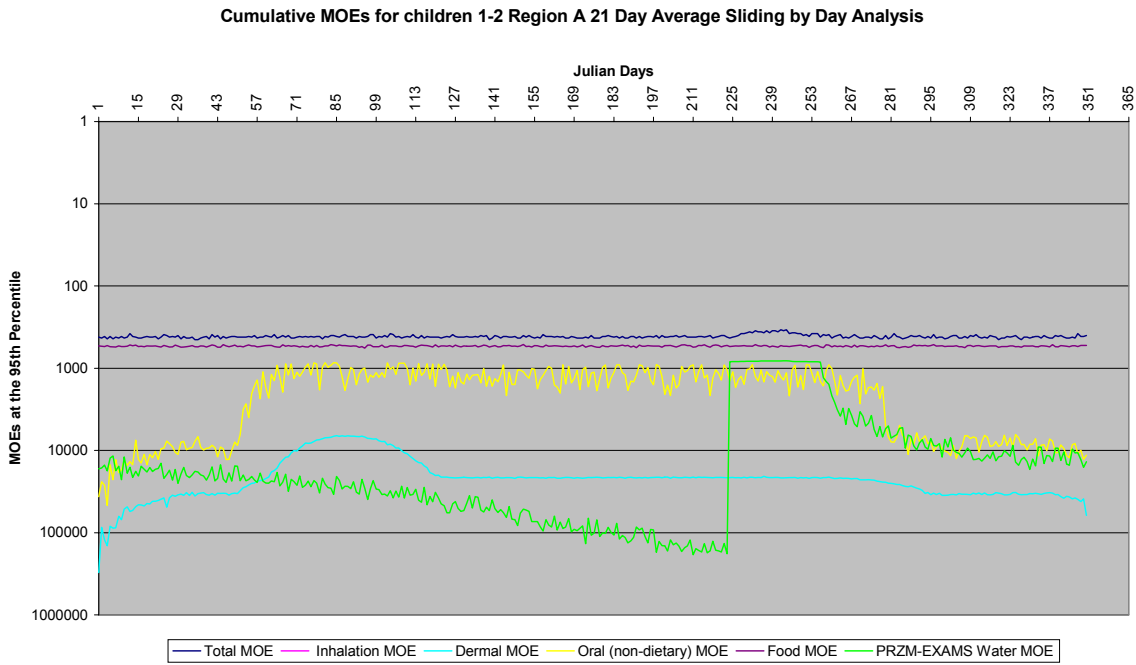


**Figure III.J.2-12. Cumulative MOEs for Children 1-2 Region A 14-Day Analysis at 99.9<sup>th</sup> Percentile**

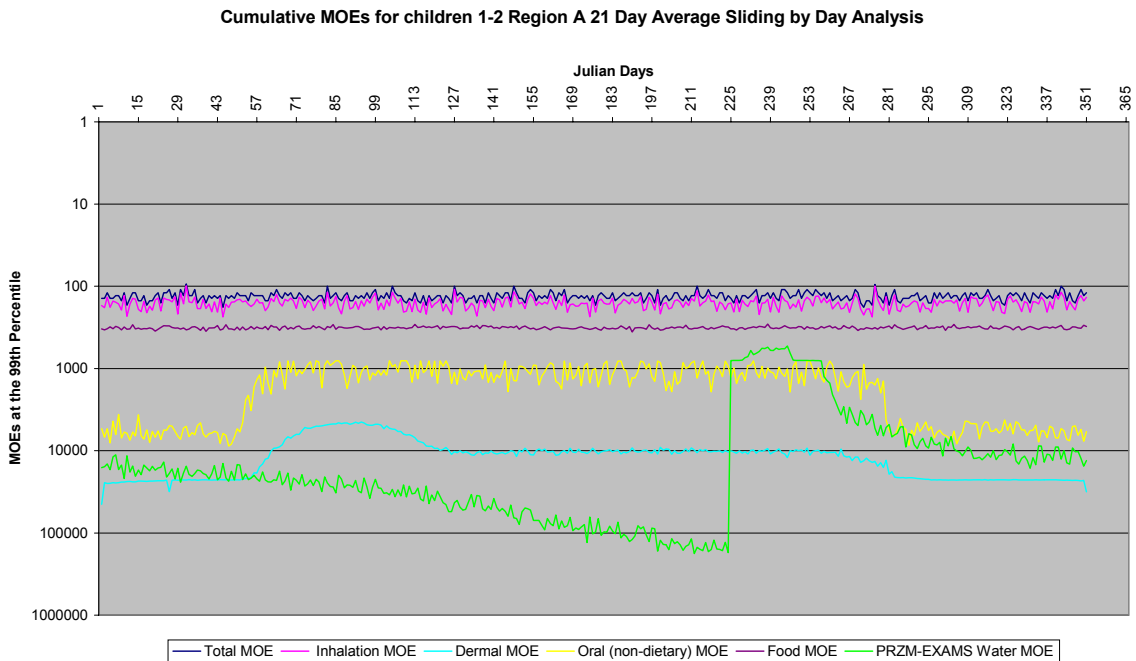


No single value in the graphs above should be used to independently arrive at the interpretation of the results. A more detailed description of the graphs are presented in the Risk Characterization section (Section I.H).

**Figure III.J.2-13. Cumulative MOEs for Children 1-2 Region A 21-Day Analysis at 95<sup>th</sup> Percentile**



**Figure III.J.2-14. Cumulative MOEs for Children 1-2 Region A 21-Day Analysis at 99<sup>th</sup> Percentile**



No single value in the graphs above should be used to independently arrive at the interpretation of the results. A more detailed description of the graphs are presented in the Risk Characterization section (Section I.H).



Figure III.J.2-15. Cumulative MOEs for Children 1-2 Region A 21-Day Analysis at 99.5<sup>th</sup> Percentile

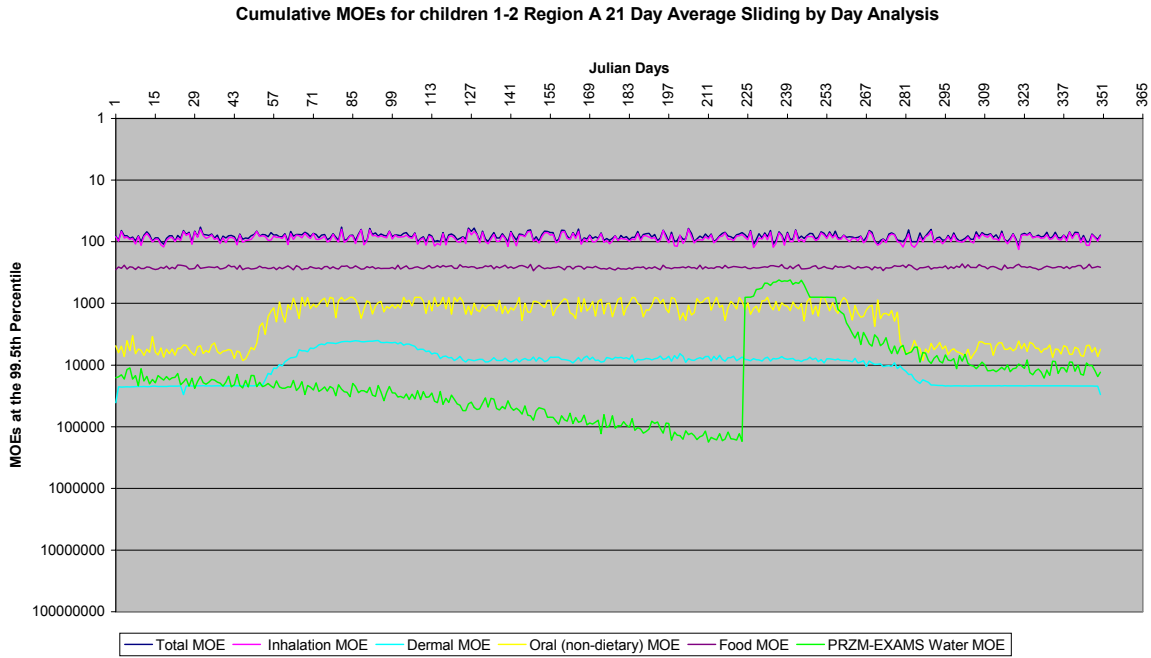
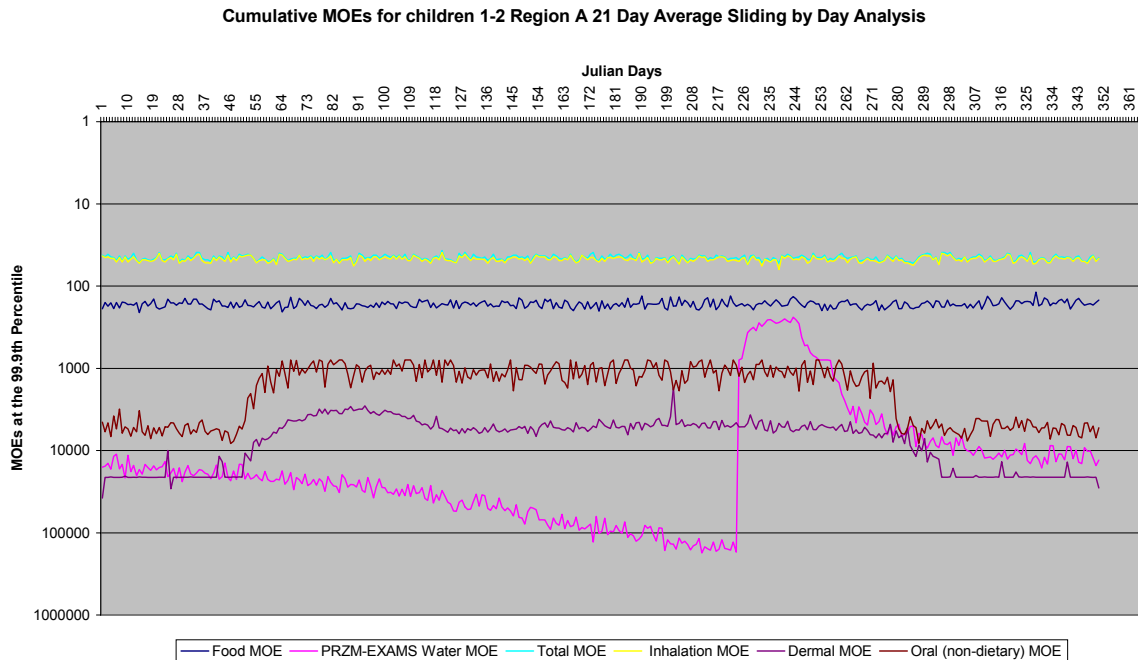
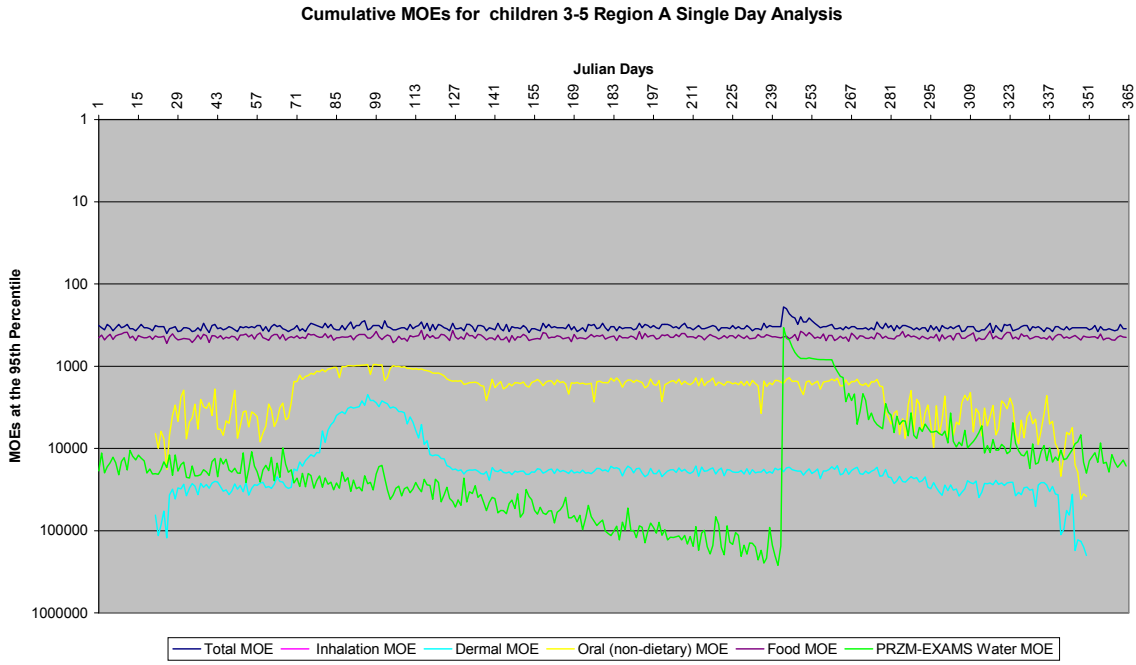


Figure III.J.2-16. Cumulative MOEs for Children 1-2 Region A 21-Day Analysis at 99.9<sup>th</sup> Percentile

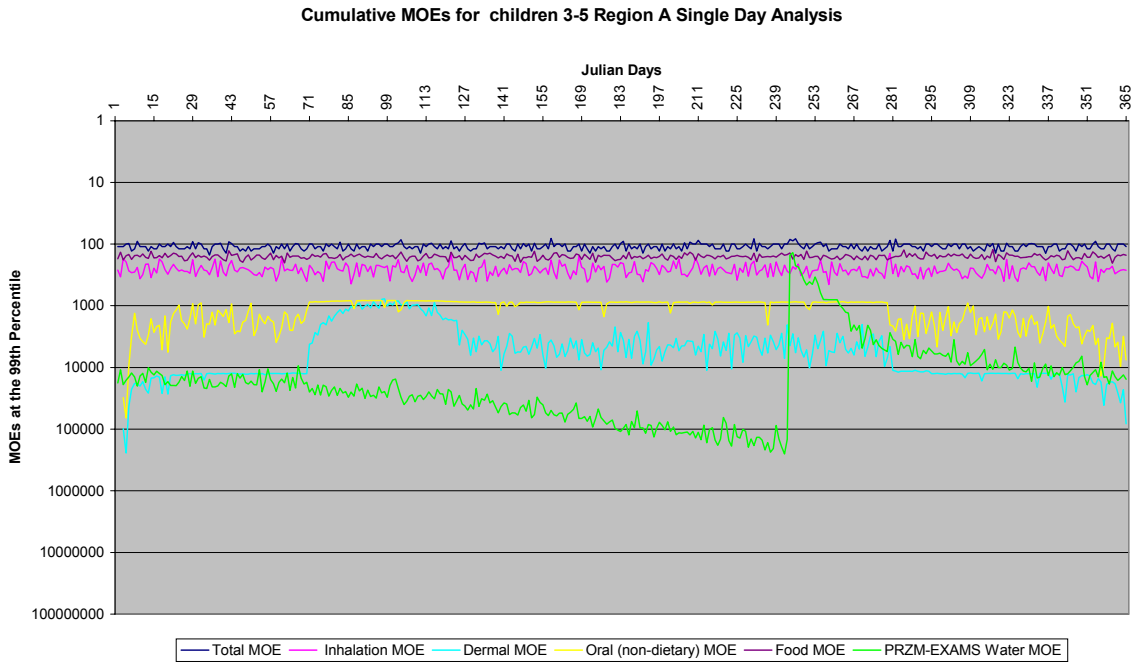


No single value in the graphs above should be used to independently arrive at the interpretation of the results. A more detailed description of the graphs are presented in the Risk Characterization section (Section I.H).

**Figure III.J.2-17. Cumulative MOEs for Children 3-5 Region A 1-Day Analysis at 95<sup>th</sup> Percentile**

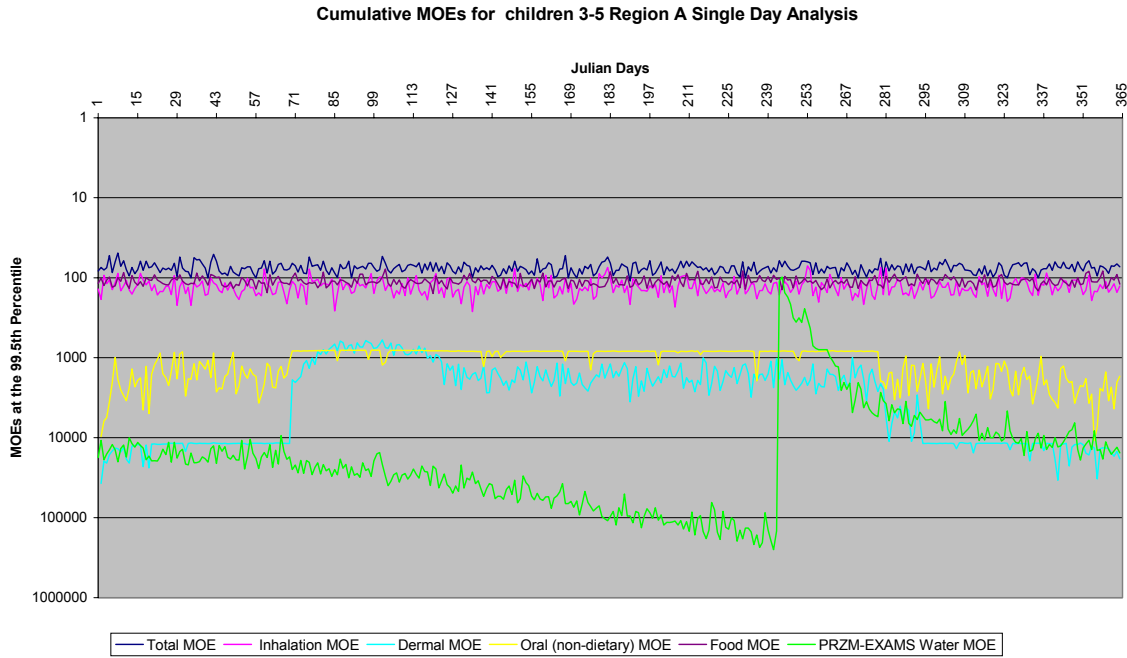


**Figure III.J.2-18. Cumulative MOEs for Children 3-5 Region A 1-Day Analysis at 99<sup>th</sup> Percentile**

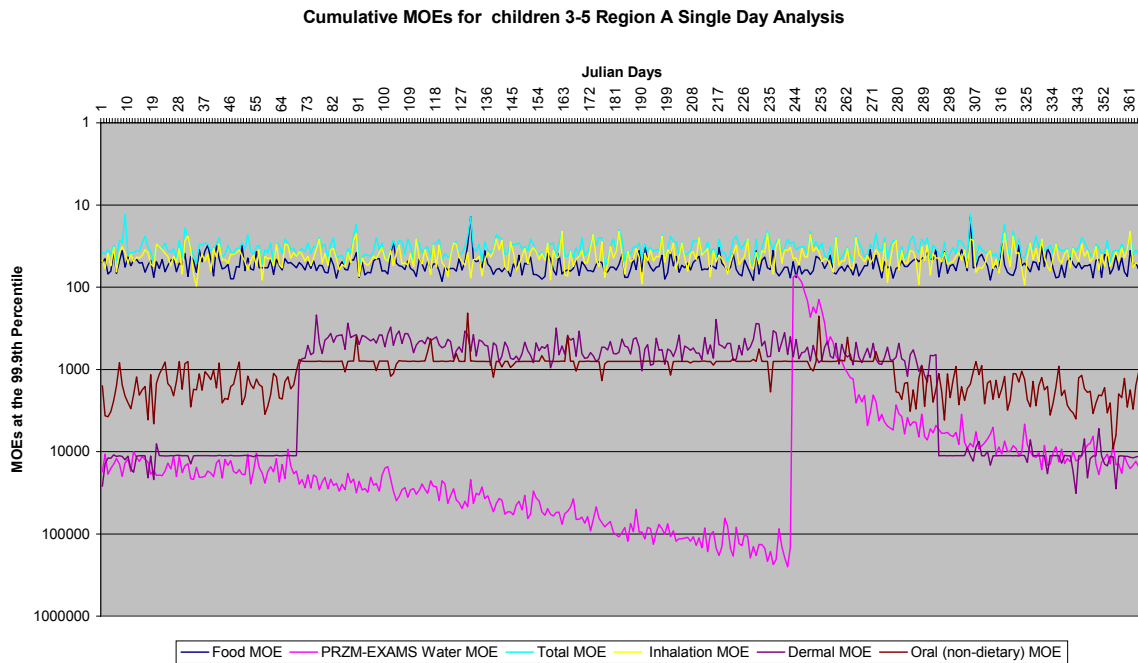


No single value in the graphs above should be used to independently arrive at the interpretation of the results. A more detailed description of the graphs are presented in the Risk Characterization section (Section I.H).

**Figure III.J.2-19. Cumulative MOEs for Children 3-5 Region A 1-Day Analysis at 99.5<sup>th</sup> Percentile**

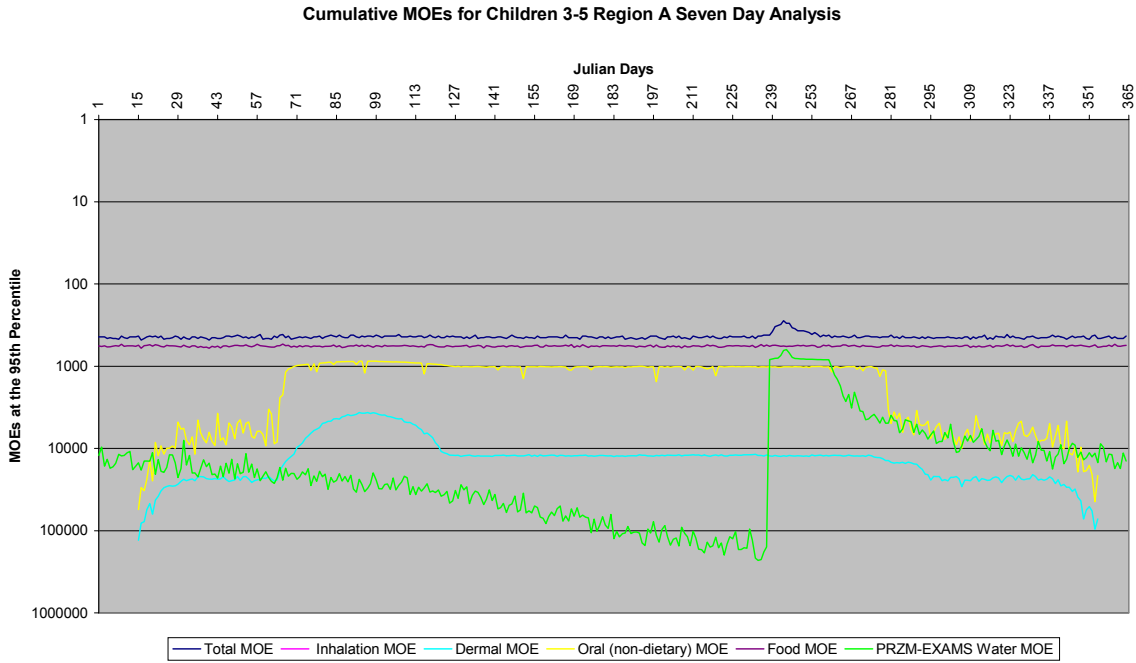


**Figure III.J.2-20. Cumulative MOEs for Children 3-5 Region A 1-Day Analysis at 99.9<sup>th</sup> Percentile**

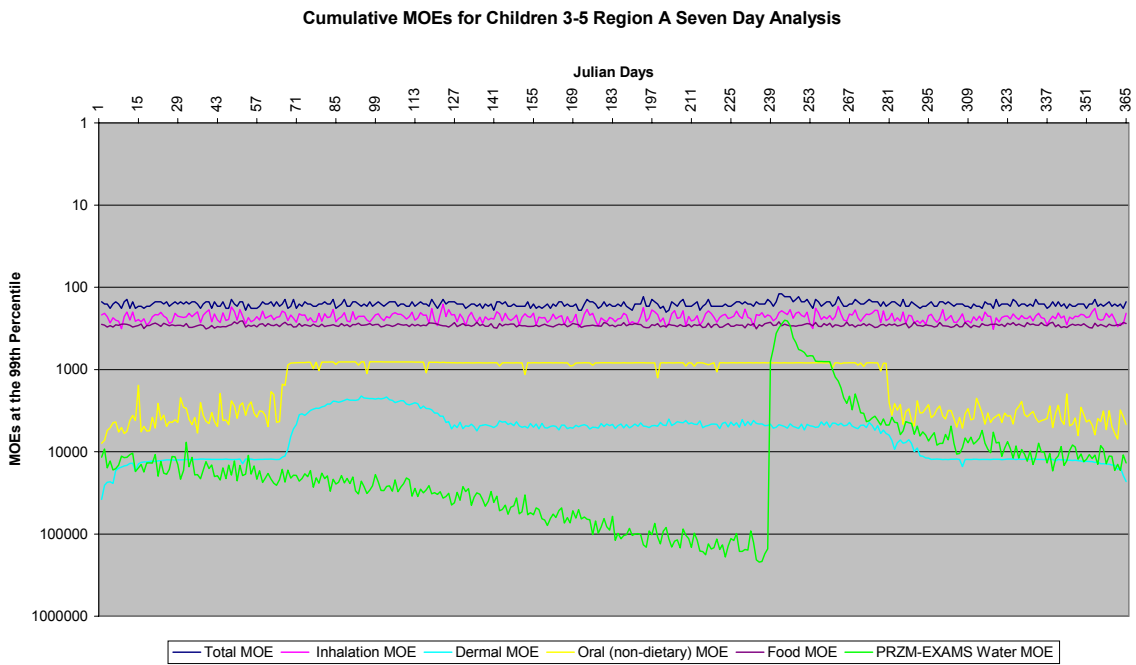


No single value in the graphs above should be used to independently arrive at the interpretation of the results. A more detailed description of the graphs are presented in the Risk Characterization section (Section I.H).

**Figure III.J.2-21. Cumulative MOEs for Children 3-5 Region A 7-Day Analysis at 95<sup>th</sup> Percentile**

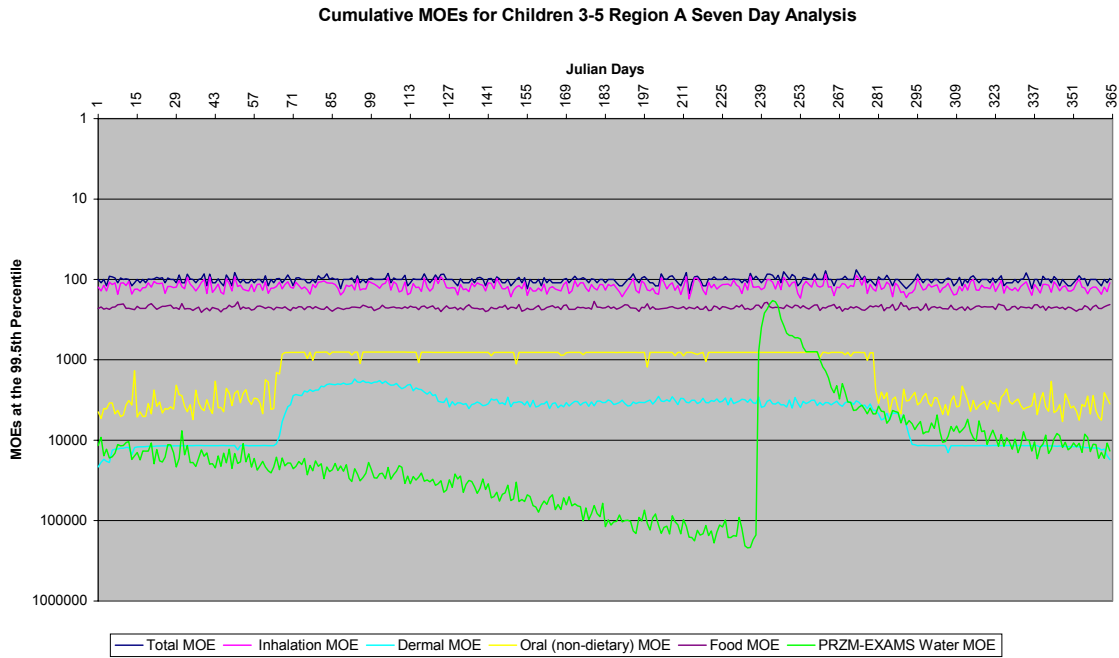


**Figure III.J.2-22. Cumulative MOEs for Children 3-5 Region A 7-Day Analysis at 99<sup>th</sup> Percentile**

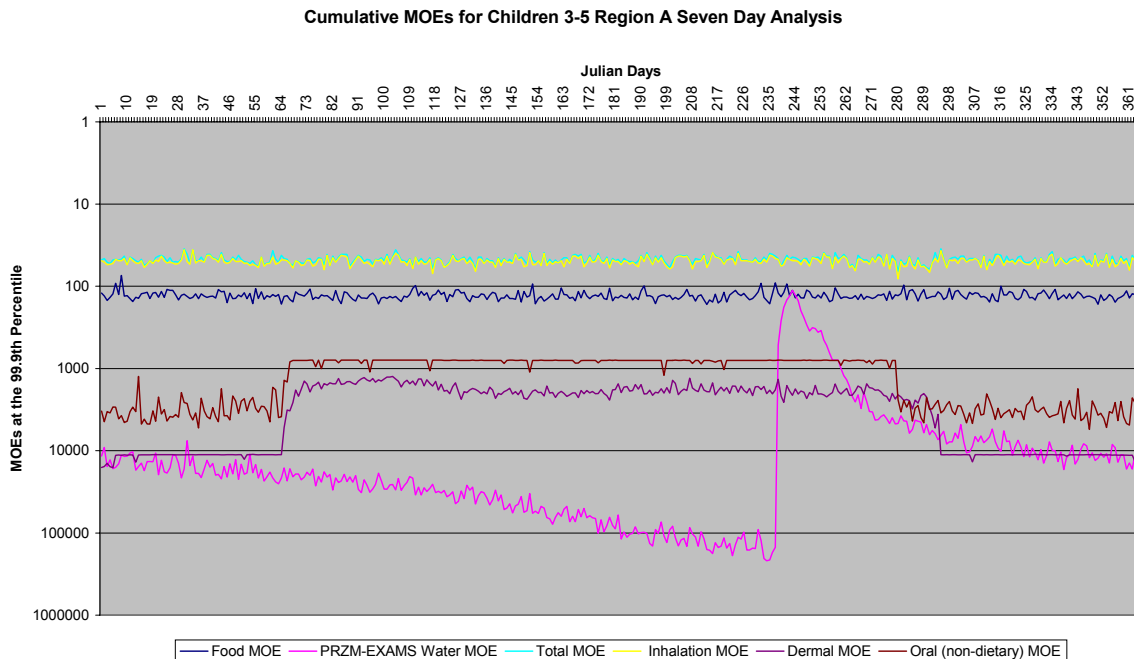


No single value in the graphs above should be used to independently arrive at the interpretation of the results. A more detailed description of the graphs are presented in the Risk Characterization section (Section I.H).

**Figure III.J.2-23. Cumulative MOEs for Children 3-5 Region A 7-Day Analysis at 99.5<sup>th</sup> Percentile**



**Figure III.J.2-24. Cumulative MOEs for Children 3-5 Region A 7-Day Analysis at 99.9<sup>th</sup> Percentile**



No single value in the graphs above should be used to independently arrive at the interpretation of the results. A more detailed description of the graphs are presented in the Risk Characterization section (Section I.H).

**Figure III.J.2-25. Cumulative MOEs for Children 3-5 Region A 14-Day Analysis at 95<sup>th</sup> Percentile**

The EPA is generating this information. It will be posted as soon as it is available.

**Figure III.J.2-26. Cumulative MOEs for Children 3-5 Region A 14-Day Analysis at 99<sup>th</sup> Percentile**

The EPA is generating this information. It will be posted as soon as it is available.

No single value in the graphs above should be used to independently arrive at the interpretation of the results. A more detailed description of the graphs are presented in the Risk Characterization section (Section I.H).

**Figure III.J.2-27. Cumulative MOEs for Children 3-5 Region A 14-Day Analysis at 99.5<sup>th</sup> Percentile**

The EPA is generating this information. It will be posted as soon as it is available.

**Figure III.J.2-28. Cumulative MOEs for Children 3-5 Region A 14-Day Analysis at 99.9<sup>th</sup> Percentile**

The EPA is generating this information. It will be posted as soon as it is available.

No single value in the graphs above should be used to independently arrive at the interpretation of the results. A more detailed description of the graphs are presented in the Risk Characterization section (Section I.H).

Figure III.J.2-29. Cumulative MOEs for Children 3-5 Region A 21-Day Analysis at 95<sup>th</sup> Percentile

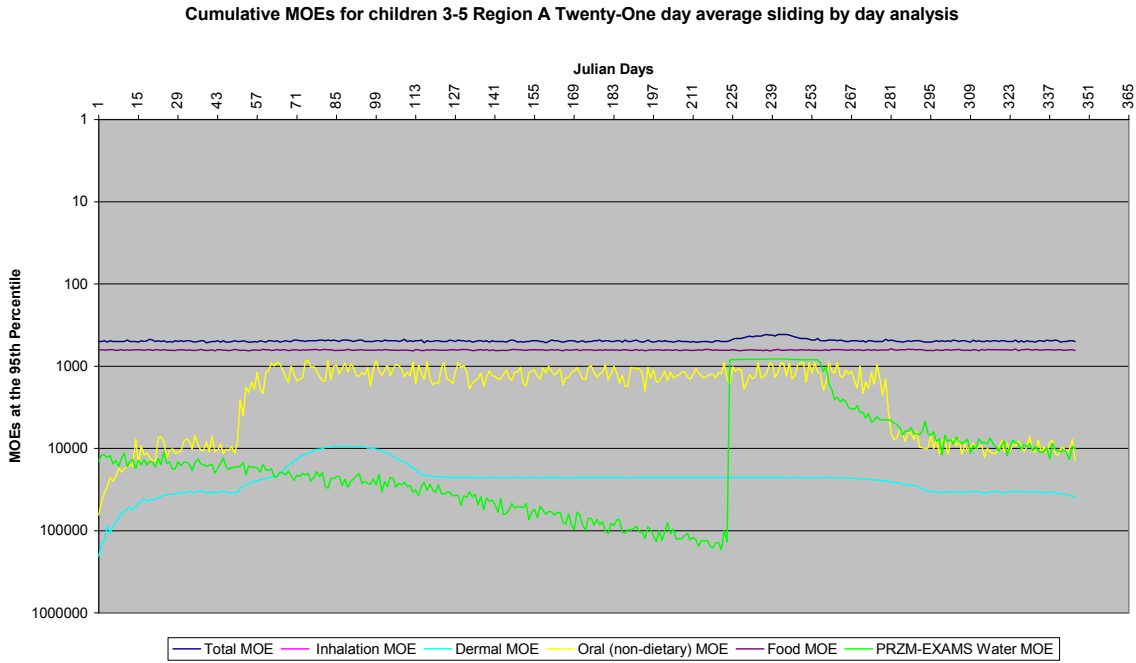
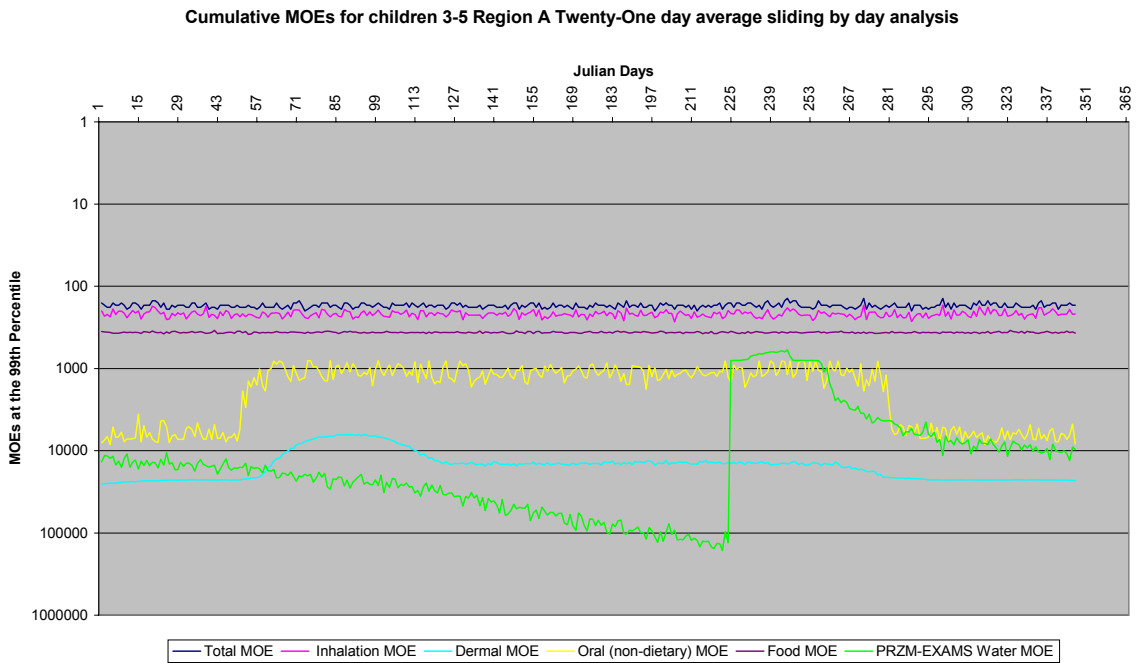


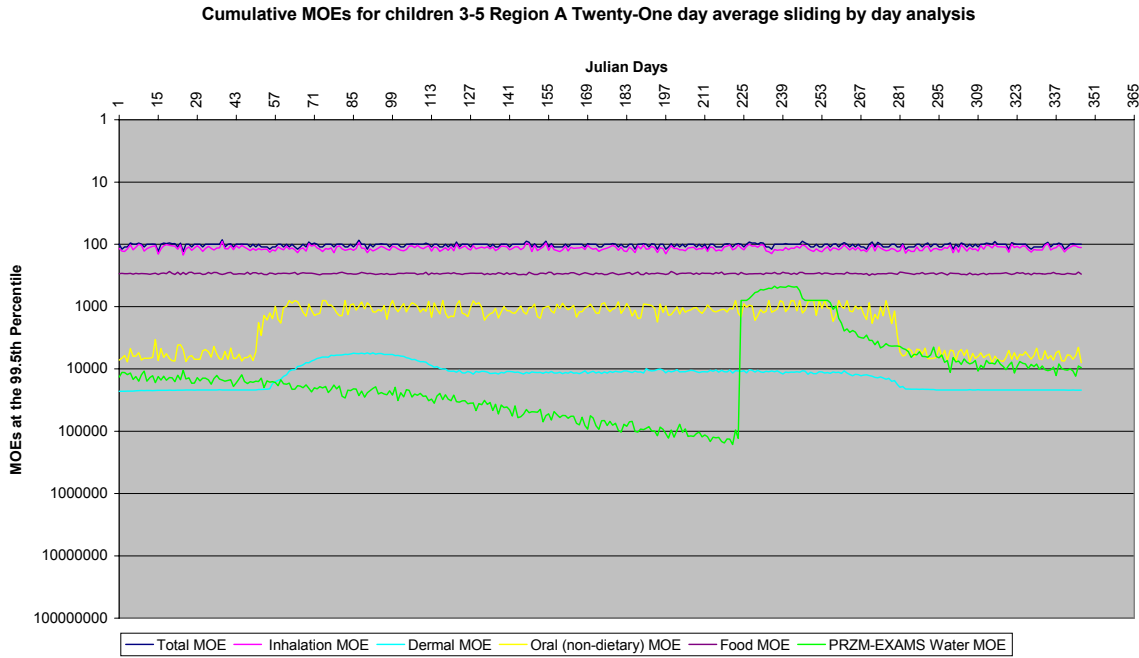
Figure III.J.2-30. Cumulative MOEs for Children 3-5 Region A 21-Day Analysis at 99<sup>th</sup> Percentile



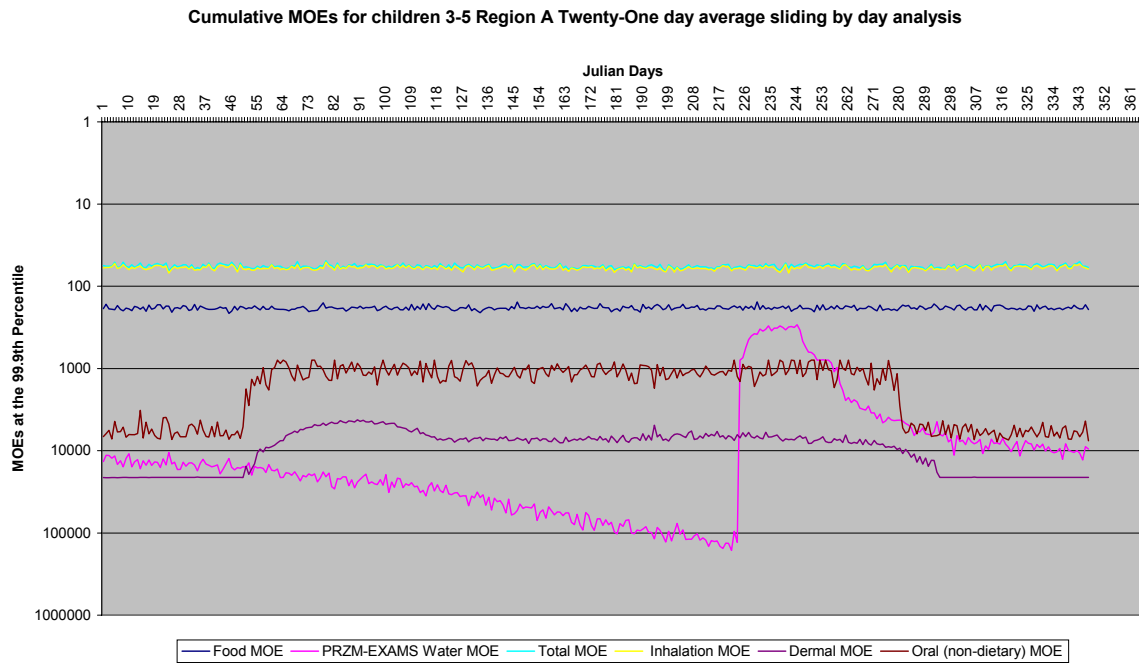
No single value in the graphs above should be used to independently arrive at the interpretation of the results. A more detailed description of the graphs are presented in the Risk Characterization section (Section I.H).



**Figure III.J.2-31. Cumulative MOEs for Children 3-5 Region A 21-Day Analysis at 99.5<sup>th</sup> Percentile**



**Figure III.J.2-32. Cumulative MOEs for Children 3-5 Region A 21-Day Analysis at 99.9<sup>th</sup> Percentile**



No single value in the graphs above should be used to independently arrive at the interpretation of the results. A more detailed description of the graphs are presented in the Risk Characterization section (Section I.H).