

PAYETTE NATIONAL FOREST

2007 Annual Fire Report



Column of Zena Fire 08-07-07
Photo by Vicki Ford

Prepared by Coral Tily
Payette National Forest
Intelligence Coordinator

Payette National Forest

2007 Annual Fire Report

Prepared By:

/s/ Coral Tily

01/28/2008

Intelligence Coordinator
Coral Tily

Date

Recommended By:

/s/ Gary Brown

03/04/2008

Branch Chief, FAAM
Gary R. Brown

Date

Approved By:

/s/ Suzanne Rainville

03/16/2008

Forest Supervisor
Suzanne Rainville

Date

2007 Payette Forest Annual Fire Report

Table of Contents

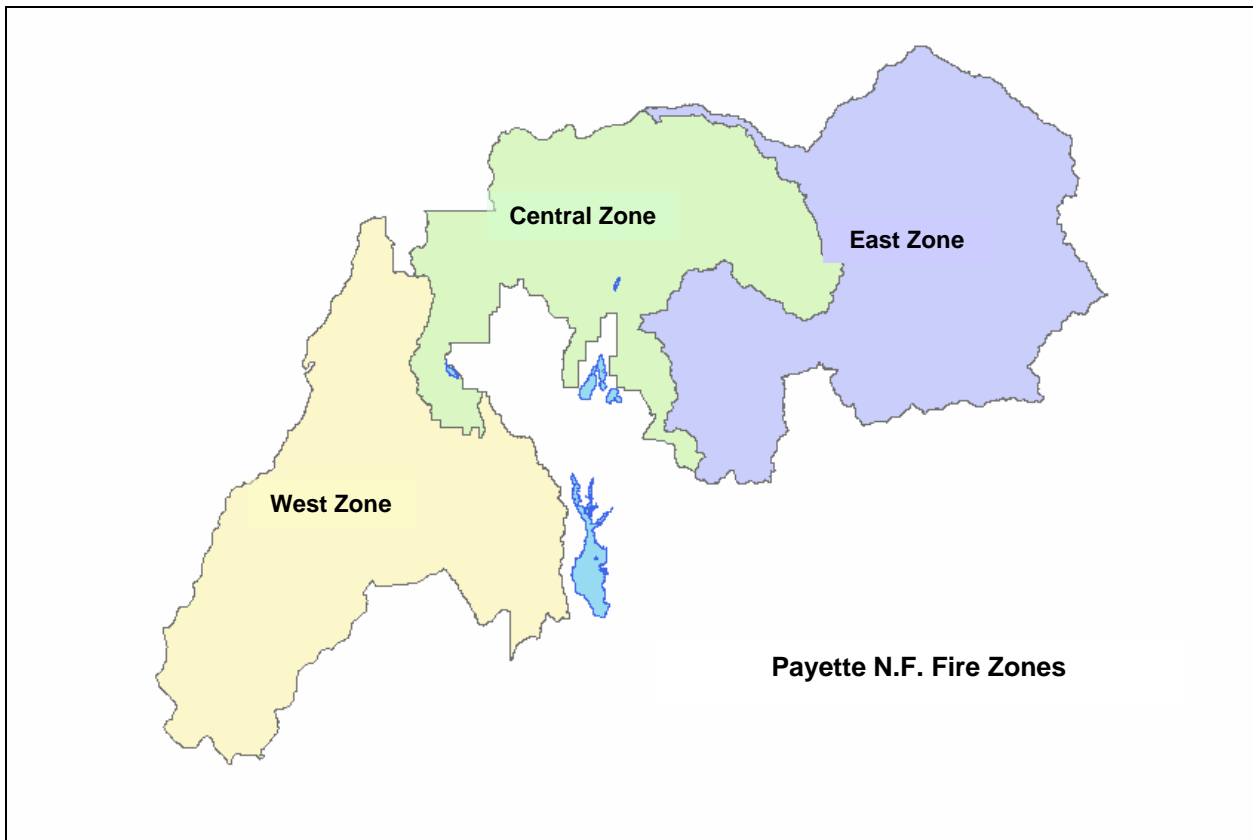
Section	Page
1. Payette Forest Fire Management Organization	4
2. Fire Season Highlights	5
3. Prescribed Fire Accomplishments	10
4. Wildland Fire Use	11
5. Examples of Significant Improvements in Cost Effectiveness	12
6. Noteworthy Instances of Cooperation	12
7. Subunit Summary	14
8. Payette Forest Helicopter Use Summary	17
9. Smokejumper Operations	18
10. Air Tanker Use Summary	20
11. Resource Requests Processed	23
12. Summary of Payette National Forest Statistics	26
13. Form FS-5100-8, Personnel Employed on Fire Control Activities	30
14. Form FS-5100-9, Land Ownership Protection Report	31

1. PAYETTE FOREST FIRE MANAGEMENT ORGANIZATION

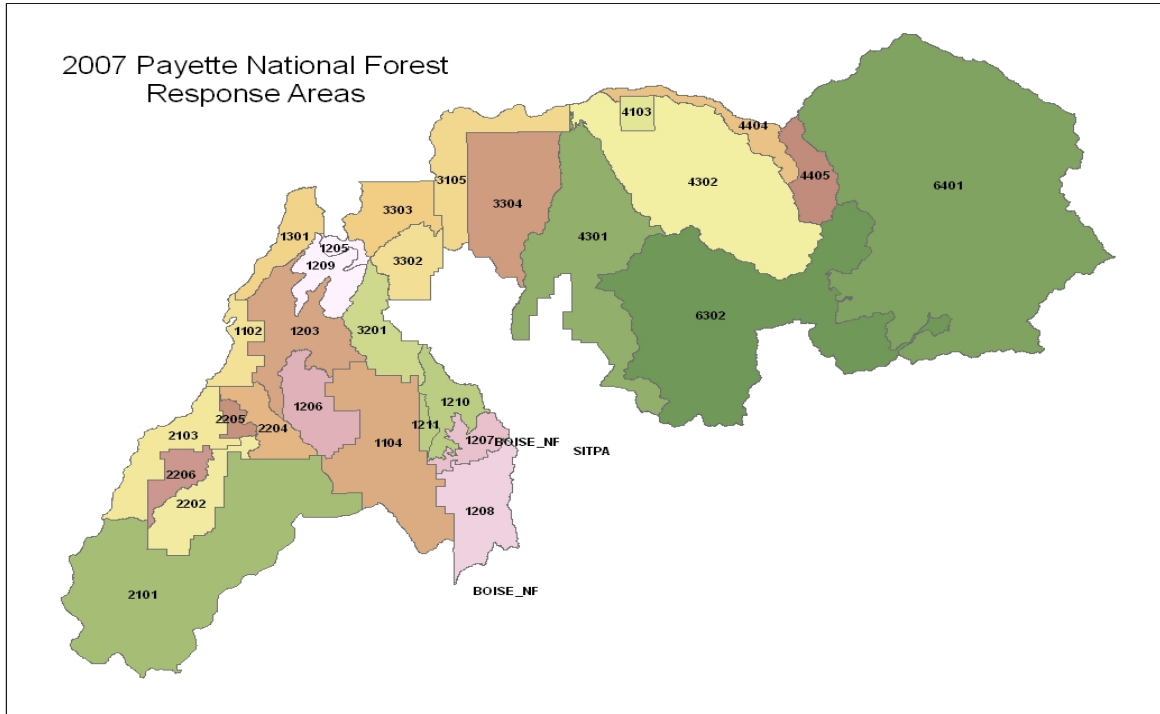
The Payette National Forest Fire Staff consists of a Fire Management Staff Officer, a Deputy Fire Staff Officer, a Fuels Specialist, a Fire Planner, a Smokejumper Unit Manager, and a Dispatch Center Manager.

The Payette National Forest is divided geographically into three fire zones. The West Zone consists of the Weiser and Council Ranger Districts. The Central Zone includes the New Meadows Ranger District and the non-wilderness portion of the McCall Ranger District. The East Zone is formed by the Krassel Ranger District and the wilderness portion of the McCall Ranger District.

A Fire Management Officer heads each suppression zone. An Assistant Fire Management Officer and a Fire Operations Specialist are assigned to each ranger district.



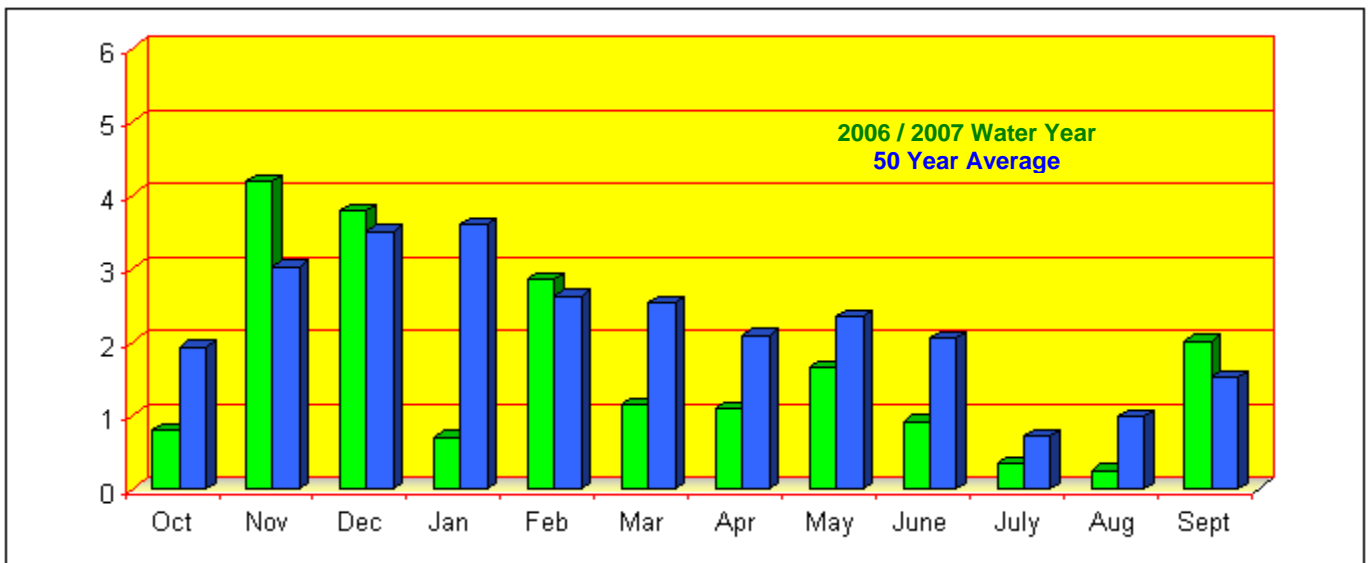
Dispatch response areas, run cards, fire management roles and responsibilities, and dispatch procedures were reevaluated after the conclusion of the 2006 fire season. The necessary adjustments were formulated and adopted before the beginning of the 2007 fire season.



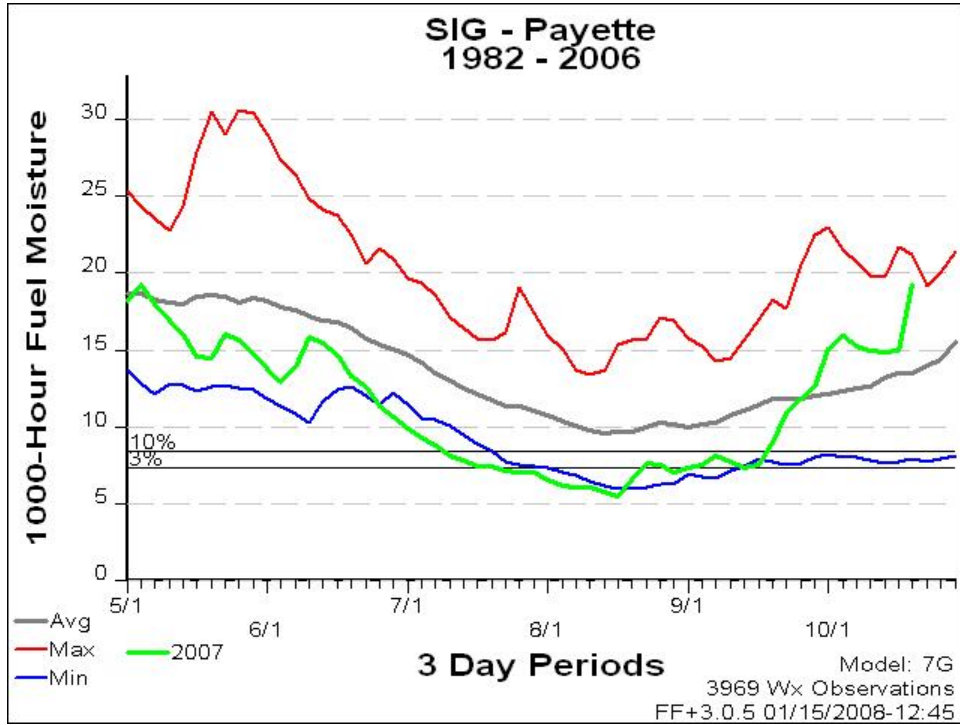
2. FIRE SEASON HIGHLIGHTS

Precipitation in McCall, ID was 73% of normal during the 2006 / 2007 water year, continuing the protracted drought. Below normal precipitation during this year caused record low 1000 hour fuel moistures and record high Energy Release Components. Fire starts were below average for the 2007 fire season, but the number of acres burned was well above average. In 2007, a total of 470,927.04 acres burned compared to the 20-year average of 56,205 acres. The number of acres burned includes two fires that started off forest and burned onto the Payette National Forest.

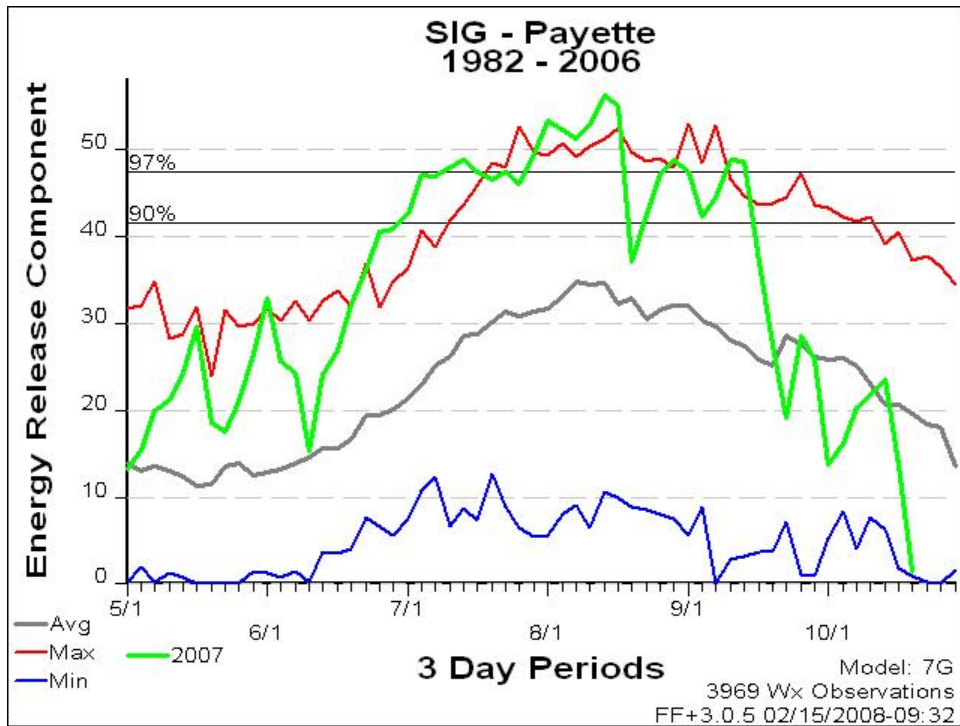
McCall Precipitation 2006 / 2007 Water Year



1000-Hour Fuel Moisture



Energy Release Component



Intense lightning storms struck the Payette National Forest between July 6th and July 17th igniting 42 fires. More lightning storms ignited 14 fires between July 25th and Aug 10th.

Fires Exceeding Local Suppression Efforts

The Spring Fire (ID-PAF-007033) merged with the Warm Springs Fire (ID-PAF-007035) and both started on 07/6/06 with the lightning storm. Local suppression efforts were exceeded and Heintz's Type-2 Incident Management Team was ordered and managed the fire from 07/09/07 to 07/13/07. The fire consumed 23,760 acres.

On 07/07/07, with another round of lightning, the Zena Creek Fire (ID-PAF-007040) ignited. The Loon Lake area on the McCall District received several hits of lightning with the next storm on 07/14/07 and six fires started. Local suppression efforts were exceeded and the Zena Creek Fire and the Loon Lake fires combined into the East Zone Complex. The Raines Fire (ID-PAF-007058) ignited on 07/07/07. It was first managed locally, then was managed by the East Zone Complex, then managed by the Krassel Complex, then managed by the East Zone Complex. The Zena-Loon fire consumed 215,270 acres and the Raines fire consumed 78,473.66 acres.

East Zone Complex Teams

Name	Start	End
Heintz IMT2	07/14/07	07/26/07
Pincha-Tully IMT1	07/25/07	08/09/07
Ferguson NIMO	08/06/07	09/05/07
Broyles IMT1	09/03/07	09/17/07
Gelobter NIMO	09/15/07	09/25/07

The Grays Creek Fire (ID-PAF-006122) started on 08/19/06. Local suppression efforts were exceeded and Harvey's Type-2 Incident Management Team was ordered and managed the fire from 08/31/07 to 09/13/07. The fire consumed 24,900 acres.

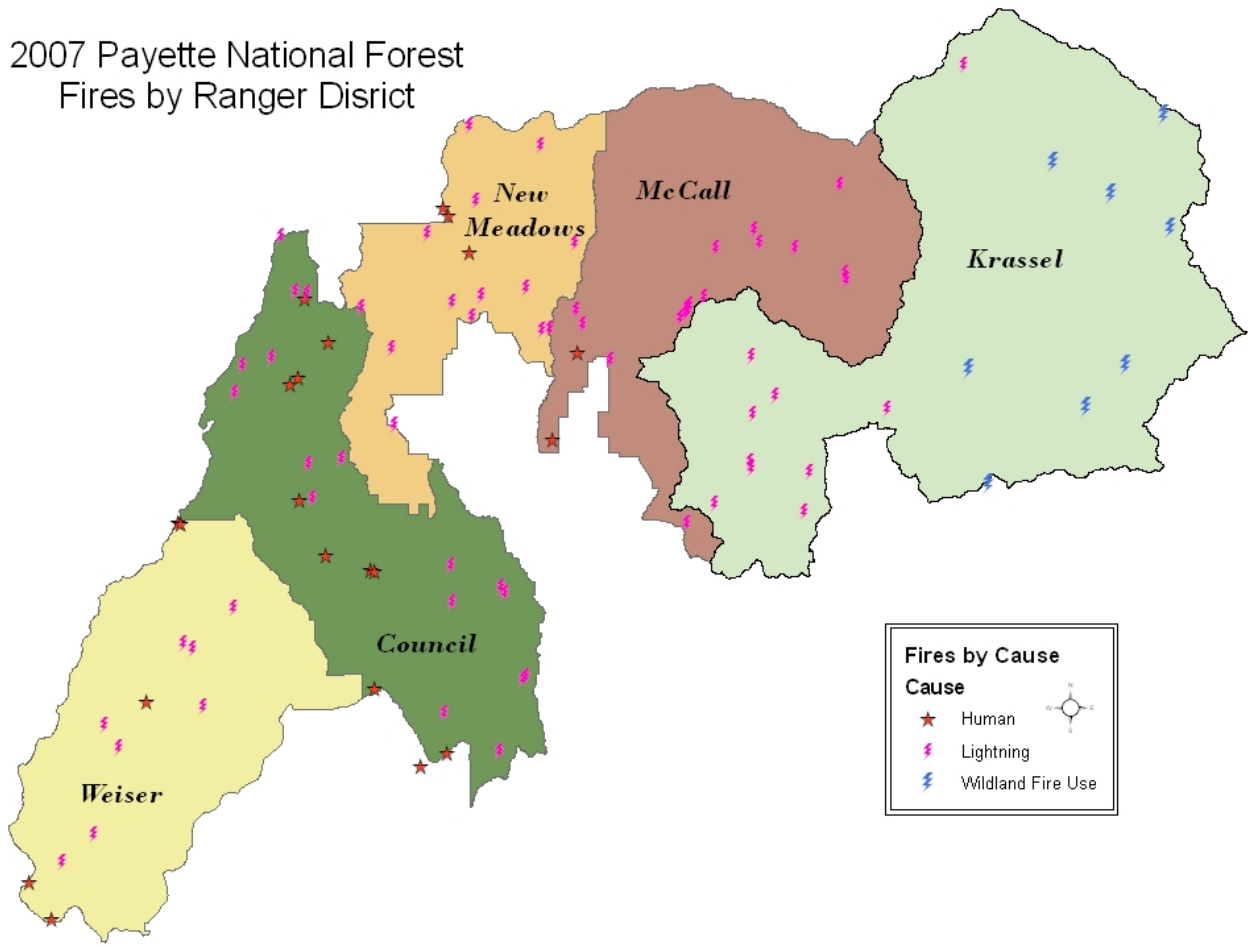
Two area command teams assisted the Payette National Forest in conjunction with the Boise National Forest throughout the summer. Ribars' Area Command Team was in place from 7/24/07 – 7/30/07, then again from 09/04/07 to 09/11/07. Loach's Area Command Team was in place from 08/07/07 – 09/05/07.

The Payette Forest had a total of 87 wildland fires consuming 384,633.84 acres and 8 Wildland Fire Use (WFU) fires involving 86,293.20 acres managed for resource benefit.

2007 Payette N.F. Fire Activity

Cause	# Of Fires	Acres
Human	21	709.35
Lightning	66	383,924.49
WFU	8	86,293.20
Total	95	470,927.04

2007 Payette National Forest
Fires by Ranger District

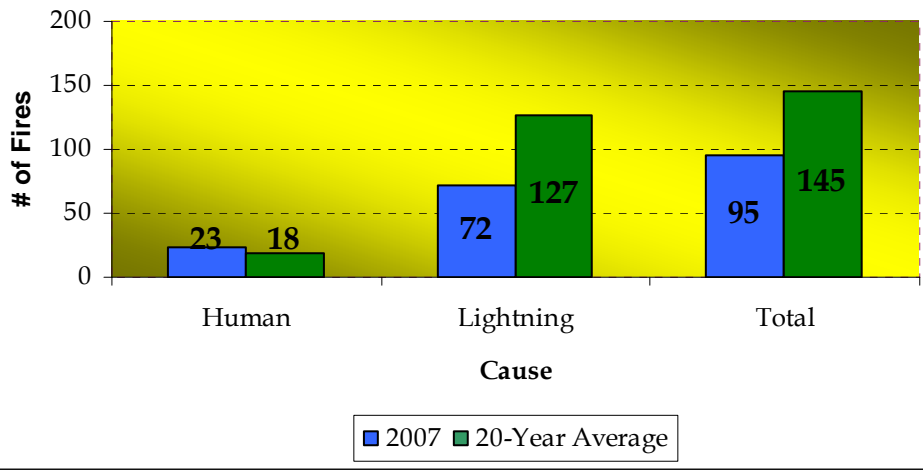


Fires by Cause

Cause

- ★ Human
- ⚡ Lightning
- ⚡ Wildland Fire Use

**Payette National Forest Fire Occurance by Cause
(including WFU)**
20 year average includes 1988-2007



Local wildland fire occurrence was below average and Payette Forest personnel supported the national effort and spent 5407.7 person-days on 714 off-unit overhead assignments.

Off-Unit OH Assignments Filled By Payette N.F. Personnel

Assignment	#	Days
Air Tactical Group Supervisor (ATGS)	4	45.8
Aircraft Base Radio Operator (ABRO)	2	14.2
Airtanker Base Manager (ATBM)	20	221.5
Burned Area Response Specialist (BAES)	1	12.4
Communications Unit Leader (COML)	3	34.4
Crew Boss (CRWB)	25	223.2
Deck Coordinator (DECK)	1	5.1
Division/Group Supervisor (DIVS)	36	318.7
Dozer Boss (DOZB)	5	58.3
Driver/Operator (DRIV)	2	142.3
Emer. Med. Tech. Basic (EMTB)	1	10.4
Engine Boss (Single Resource) (ENGB)	9	109.7
Expanded Dispatch Recorder (EDRC)	2	60.5
Faller Class B (FALB)	33	103.2
Faller Class C (FALC)	2	7.7
Finance/Administration Section Chief – Type 2 (FSC2)	3	20.8
Field Observer (FOBS)	3	10.0
Fire Effects Monitor (FEMO)	3	34.9
Fire Fighter Type 2 (FFT2)	75	477.7
Firefighter Type 1 (FFT1)	30	305.3
Food Unit Leader (FDUL)	5	28.6
GIS Specialist (GISS)	2	30.0
GIS Technical Specialist (GIST)	5	42.3
Helibase Manager, 1 to 3 Helicopters (HEB2)	1	14.9
Helibase Manager, 4 or More Helicopters (HEB1)	3	24.3
Helicopter Boss, Single Resource (HELB)	2	9.5
Helicopter Crew Member (HECM)	76	524.5
Helicopter Manager (HELM)	34	241.1
Helicopter Rappel Spotter (HERS)	1	24.9
Helicopter Rappeler (HRAP)	5	33.6
Incident Commander T3 (ICT3)	3	13.6
Incident Commander T4 (ICT4)	3	84.9
Incident Commander T5 (ICT5)	5	70.3
Initial Attack Dispatcher (IADP)	8	118.4
Medical Unit Leader (MEDL)	1	9.1
Mixmaster (MXMS)	2	27.8
Operations Branch Director (OPBD)	4	27.1
Operations Section Chief T2 (OSC2)	9	79.0
Ordering Manager (ORDM)	2	24.3
Planning Section Chief T1 (PSC1)	1	15.9
Planning Section Chief T2 (PSC2)	4	33.3
Prescribed Fire Burn Boss T 2 (RXB2)	3	21.8
Ramp Manager (RAMP)	2	17.2
Receiving & Distribution Mgr. (RCDM)	1	23.9
Resource Advisor	2	29.1
Safety Officer Type 2 (SOF2)	5	42.7

Security Specialist Level 1 (SEC1)	1	29.5
Single Engine Air Tanker Manager (SEMG)	1	5.1
Smokejumper (SMKJ)	193	1175.8
Strike Team Leader- Crew (STCR)	2	7.2
Strike Team Leader – Engines (STEN)	1	16.3
Supervisory Dispatcher	1	8.1
Support Dispatcher- Ex. Disp. (EDSD)	1	1.0
Task Force Leader (TFLD)	35	246.3
Technical Specialist (THSP)	6	83.4
Time Unit Leader (TIME)	6	47.8
Total	714	5,407.7

Payette Forest Dispatch also mobilized state personnel including Southern Idaho Timber Protection Area and Idaho Department of Lands employees to off-unit assignments. State personnel spent 160.5 days off unit, for a total of 27 assignments.

Aircraft Accidents

On 07/14/07 at 0949 hours, recon M9474Z (C-206) lost oil pressure and made an emergency landing just below Horse Mountain lookout. Both people aboard survived with very minor injuries, and the aircraft was a total loss. Hanks headed up the accident investigation.

On 07/25/07 at 2007 Helicopter 214HT (Bell 214) made a hard landing near at Steamboat lake, injuring two crewmembers. The aircraft was a total loss. Eliot headed the accident investigation.

3. PRESCRIBED FIRE ACCOMPLISHMENTS

Prescribed fire and fuels reduction responsibilities are organized into three geographic areas on the Payette Forest. These areas consist of the Council and Weiser Ranger Districts, the New Meadows Ranger District, and the McCall and Krassel Ranger Districts.

The forest completed 19 prescribed burns over 37 days for a total of 718.76 acres.

2007 Payette National Forest Prescribed Fire Activity

Date Burned	Name of Unit	Type	Acres Burned	Legal		
				Twn	Rng	Sec
3/19/2007	Mann Creek Natural Fuels Unit 2	Understory	10	14N	05W	33
3/29/2007	Tamarack Thin	Landings	17	15N	05W	25
3/30/2007	Mann Creek Natural Fuels Unit 2	Understory	10	14N	05W	33
4/6/2007	Mann Creek Natural Fuels Unit 2	Understory	50	14N	05W	33
10/15/2007	Hornet Creek Riparian Piles	Hand Piles	1.5	18N	3W	25
10/16/2007	Lost Valley Squirrel Burn Unit 3	Broadcast	52	19N	1W	22
10/16/2007	Hornet Creek Riparian Piles	Hand Piles	6.5	18N	3W	25
10/18/2007	Hornet Creek Riparian Piles	Hand Piles	27	18N	3W	25
10/19/2007	Hornet Creek Riparian Piles	Hand Piles	5	18N	3W	25
10/23/2007	Blue Springs	Understory	1	15N	5W	24
10/24/2007	Burn Block 1 (Bear Tornado)	Other Mechanical	10	20N	2W	29
10/24/2007	Burn Block 2-1 (Bear Tornado)	Other Mechanical	15	20N	2W	29
10/26/2007	Burn Block 2-1 (Bear Tornado)	Other Mechanical	1.5	20N	2W	29
10/29/2007	Burn Block West #1 (Bear Tornado)	Hand Piles	10	20N	2W	29
10/30/2007	Burn Block 1 (Bear Tornado)	Other Mechanical	5	20N	2W	29
10/31/2007	Cougar TS Pile	Other Mechanical	51	14N	2E	9
11/1/2007	Burn Block West #2 (Bear Tornado)	Jackpot	11	20N	2W	29

11/1/2007	Anderson TS Pile	Other Mechanical	98	14N	2W	22
11/2/2007	Burn Block 3 (Bear Tornado)	Unspecified	20	20N	2W	29
11/2/2007	Anderson TS Pile	Other Mechanical	48	14N	2W	22
11/3/2007	Burn Block 3 (Bear Tornado)	Unspecified	17.2	20N	2W	29
11/4/2007	Burn Block 2-2 (Bear Tornado)	Broadcast	10.96	20N	2W	29
11/6/2007	Burn Block 2-2 (Bear Tornado)	Broadcast	21.3	20N	2W	29
11/6/2007	Cougar TS Activities	Broadcast	10	14N	2E	21
11/7/2007	Burn Block 2-2 (Bear Tornado)	Broadcast	22.8	20N	2W	29
11/7/2007	Cougar TS Activities	Broadcast	17	14N	2E	21
11/8/2007	Anderson TS Activities	Broadcast	6	14N	2E	22
11/8/2007	Blue Springs	Understory	40	15N	5W	24
11/9/2007	Burn Block 1 (Bear Tornado)	Other Mechanical	5	20N	2W	29
11/10/2007	Burn Block West #1 (Bear Tornado)	Hand Piles	5	20N	2W	29
11/10/2007	Burn Block West #3 (Bear Tornado)	Other Mechanical	15	20N	2W	229
11/10/2007	Blue Springs	Understory	15	15N	5W	24
11/13/2007	Burn Block West #1 (Bear Tornado)	Hand Piles	9	20N	2W	29
11/15/2007	Quarter Round Timber Sale	Other Mechanical	40	21N	1E	32
11/15/2007	Mann Creek TS-Landings	Landings	15	15N	5W	20
11/19/2007	Mann Creek TS - Activities	Unspecified	10	14N	5W	19
11/27/2007	Mann Creek TS - Activities	Landings	10	14N	5W	19

4. WILDLAND FIRE USE

The Payette National Forest administered eight Wildland Fire Use (WFU) fires that involved a total of 86,296.20 acres managed for resource benefit. The Papoose WFU ignited on the Salmon-Challis National Forest and burned onto the Payette Forest, but administrated by the Salmon-Challis. Eight of these fires (including the Papoose) were located inside the Frank Church River of No Return Wilderness (FCRONR) and one was outside the wilderness.

2007 Payette N.F. Wildland Fire Use

Date	Fire Name	Incident #	Latitude			Longitude			Subunit	Acres
			Deg	Min	Sec	Deg	Min	Sec		
	Papoose WFU #									3890.00
6/17/2007	Tag WFU	ID-PAF-007019	45	24	18	114	52	30	6	47187.00
7/7/2007	McCalla Creek WFU	ID-PAF-007041	45	20	26	115	6	15	6	0.20
7/7/2007	Buckhorn WFU*	ID-PAF-007060	44	52	41	115	15	7	6	2.00
7/14/2007	Goat WFU	ID-PAF-007090	45	2	37	115	17	6	6	25907.00
7/21/2007	Cottonwood WFU	ID-PAF-007119	44	59	5	115	2	59	6	8887.00
7/26/2007	Sheephorn WFU	ID-PAF-007124	45	2	40	114	57	59	6	17.00
8/16/2007	Whimstick WFU	ID-PAF-007141	45	17	37	114	59	15	6	3.00
9/3/2007	Cave WFU	ID-PAF-007152	45	14	29	114	52	7	6	400
Total										86,293.20
<i>* Located outside the FCRONR Wilderness / # Ignited on the Salmon-Challis</i>										

Payette National Forest Wilderness Monitoring/Reporting:

Fires that ignited within the Frank Church River of No Return Wilderness (FCRNR) that were WFU fires: ALL (8)
Total Acres burned inside the FCRNR: 155,557.30
Acres from fires ignited outside of FCRNR that burned into FCRNR: 69,264.30
Fires within the FCRNR that were suppressed: NONE
Reasons for suppression fires within the FCRNR: N/A

Three Fire Use Teams assisted Payette National Forest personnel in the long-term management of the WFU's.

Team	Start	End
Beckman	07/15/07	07/28/07
Ourada	07/28/07	08/26/07
Hannenburg	08/27/07	09/11/07

5. EXAMPLES OF SIGNIFICANT IMPROVEMENTS IN COST EFFECTIVENESS

Fire suppression resources were in short supply nationally during the 2007 fire season and Payette Forest fire managers coordinated with local large fire and initial attack fire managers to prioritize and share fire suppression resources among incidents and forests.

The Forest utilized NIMO Teams this year which consist of 7-10 people, as opposed to 10-27 that are configured on the Type 1 and 2 IMT's.

The addition of the T1 Exclusive Use Helicopter greatly improved costs. Fire management estimates that ten fires would have exceeded local suppression efforts without the aid of the T1 helicopter. Additionally, the T1 helicopter also costs less than Single Engine Air Tankers (SEATs) or Heavy Airtankers.

6. NOTEWORTHY INSTANCES OF COOPERATION

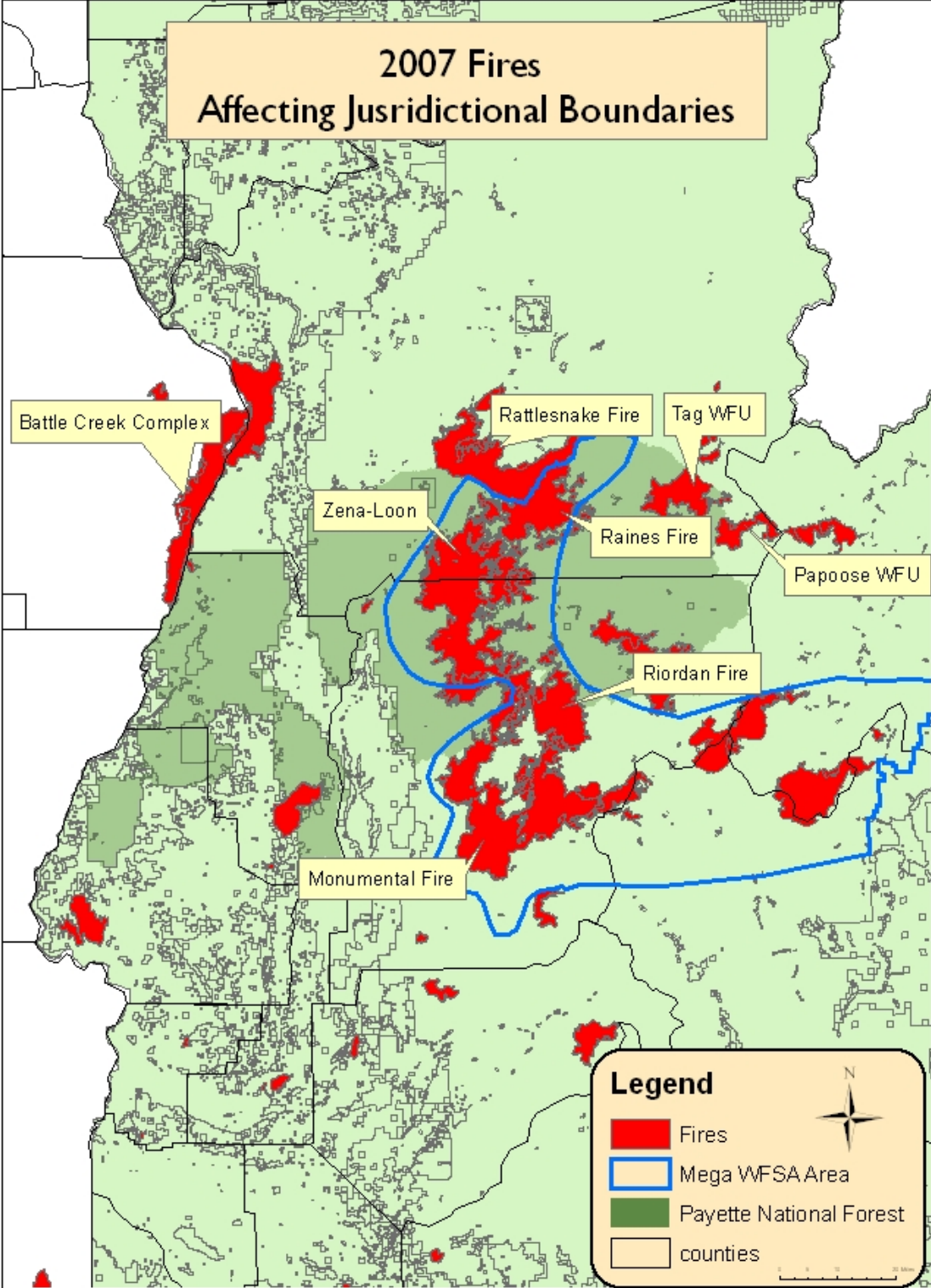
The Payette Forest continues to work with Adams, Valley, Idaho, and Washington Counties updating hazard mitigation plans that identify and reduce hazardous fuels accumulations in wildland urban interface areas.

The Payette Forest is an active member of the Snake River Valley Fire Chiefs Association, which consists of 21 rural fire departments and the Boise and Vale BLM.

The West Zone Fire Management staff is a participating member of the Washington County Wildland Urban Interface Advisory Council.

The Payette and Boise National Forests shared fire management responsibilities for the Cascade Complex. The Payette and Wallowa-Whitman National Forests shared fire management responsibilities for the Deep Creek Fire that was a part of the Battle Creek Complex. The Payette and Salmon-Challis shared fire management responsibilities for the Papoose WFU and the Tag WFU. The Raines Fire jumped the Salmon River and the Payette National Forest and Nez Perce National Forest cooperated with the management of it with the Rattlesnake Complex. The Monumental Fire and the Riordan Fire on the Boise National Forest burned onto the Payette National Forest. There was close to continuous fire from the Boise with the Monumental and Riordan Fire, burning to the Zena-Loon Fire, burning to the Raines Fire, burning to the Rattlesnake Fire. Area Command assisted with the cooperation efforts.

Because of the combined efforts of many forests' fire management and the extent of area that was burning, a mega-WFSA was developed. The mega-WFSA comprised of the Boise, Payette and Salmon-Challis National Forests and also the Southern Idaho Timber Protection Area and included 420,000 acres.



Forest fire prevention officers along with Boise National Forest and Boise BLM personnel participated in the Weiser Fiddle Festival at Weiser, Idaho, the Fourth of July and Christmas parades at Council, Idaho, the Fourth of July parade at Midvale and Cascade, Idaho, the Youth Conservation Days at Farewell Bend, Oregon, and Fall Conservation Days at the Mann Creek Campground, and the Music Festival in Council. Forest fire personnel staffed booths at the Adams County and Washington County Fairs. Fire prevention officers made numerous presentations to schools in Fruitland, Payette, Weiser, Midvale, Cambridge, and Council, Idaho.

The forest provided instructors and subject matter experts to the Great Basin Training Center and NIFC. The forest also provided coordinators to the Florida Prescribed Fire Training Center and the Fire Use Training Academy in Region 3.

7. SUBUNIT SUMMARY

Payette Dispatch

The Payette Dispatch Center organization consists of a Center Manager, an Assistant Center Manager, an Intelligence Coordinator, a Forest Training Officer, and four Dispatchers (two permanents and two seasonals). A night dispatcher position (seasonal) was added. A dispatcher acted as the Intelligence Coordinator and a seasonal dispatcher was hired to fill in behind. Payette dispatchers scheduled and tracked 1,207 fixed wing and helicopter flights during 2007.

Dispatch personnel spent a total of 23 days on assignments assisting other dispatch centers and geographic areas as Aircraft Dispatcher (ACDP), Supervisory Dispatcher (EDSP), Expanded Dispatch Support Dispatcher (EDSD), and Technical Specialist (THSP).

Council Ranger District

Council experienced 12 human-caused fires burning 663.35 acres and 18 lightning-caused fires burning 26,157.32 acres for a total of 26,802.57 acres and 30 fires.

Council fire suppression resources included Engine 612 (Type 6), Engine 411 (Type 4), the 10-person Bear Handcrew, and two fire lookouts. Engine 612 spent 26.3 days on one off-unit assignment. The hand crew spent 17.1 days on one off-unit assignment

Engine 612 Off-Unit Assignments

Incident #	Incident Name	Incident Type	Mob ETD	Demob ETA	Days
FL-FNF-007028	Florida Bugaboo	Fire - Wildfire	05/11/07	06/06/07	26.3

Crew 1 Off-Unit Assignment

Incident #	Incident Name	Incident Type	Mob ETD	Demob ETA	Days
CO-SJF-001000	A B C D Fires	Preparedness/Preposition	06/24/07	07/11/07	17.1

Weiser Ranger District

Weiser experienced four human-caused fires burning 32.30 acres and 8 lightning-caused fires burning 23,763.30 acres for a total of 23,795.6 acres and 12 fires.

Weiser fire resources included Engine 421 (Type 4), Engine 622 (Type 6), and one fire lookout. Neither of the engines had off-unit assignments in 2007.

New Meadows Ranger District

New Meadows experienced three human-caused fires burning 3.60 acres and 12 lightning-caused fires burning 8.96 acres for a total of 12.56 acres and 15 fires.

New Meadows fire resources included helicopters H69H (Type 2), H215KA (Type 2), 24 rappellers, Engine 431 (Type 4), and four fire lookouts. Engine 431 spent 98.7 days on off-unit assignments.

Engine 431 Off-Unit Assignments

Incident #	Incident Name	Incident Type	Mob ETD	Demob ETA	Days
UT-UOA-000060	Neola North	Fire – Wildfire	07/01/07	07/11/07	10.4
UT-CCD-070345	Greenville	Fire – Wildfire	07/11/07	07/17/07	6.0
CA-CSR-000100	October Move Up and Cover	Preparedness/Preposition	10/26/07	11/01/07	6.3
CA-MVU-010432	Witch	Fire – Wildfire	10/28/07	11/01/07	3.8
CA-OSC-000110	So. Ops FEMA Activation 2007	Preparedness/Preposition	11/01/07	11/05/07	4.3
CA-BDF-010570	Slide	Fire – Wildfire	11/05/07	11/13/07	8.0

McCall Ranger District

McCall experienced two human-caused fires burning 10.1 acres and 17 lightning-caused fires burning 95,776.61 acres for a total of 95,786.71 acres and 19 fires.

McCall fire resources included Engine 441 (Type 4), Engine 642 (Type 6), the five-person Warren Handcrew, and three fire lookouts. Engine 441 spent 18.3 days on off-unit assignments.

Engine 441 Off-Unit Assignments

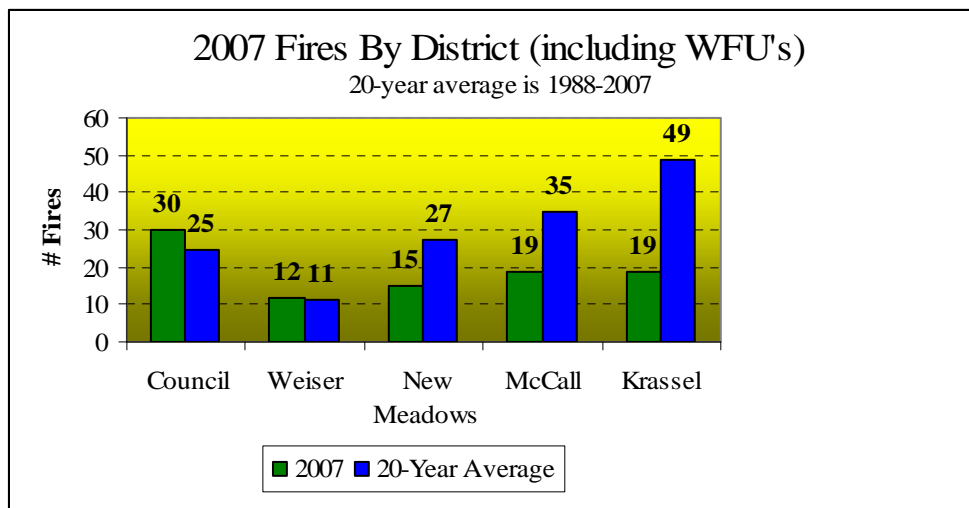
Incident #	Incident Name	Incident Type	Mob ETD	Demob ETA	Days
UT-SLD-000190	2007 BLM Severity	Preparedness/Preposition	06/19/07	07/07/07	18.3
UT-SLD-000250	Mercer	Fire – Wildfire	06/24/07	07/05/07	11.0

The AFMO position was filled by a detailer for the summer. The FOS position was split by two smokejumpers on detail assignments.

Krassel Ranger District

Krassel experienced 11 lightning-caused fires burning a total of 238,236.3 acres. This acreage number includes the Monumental Fire acres that burned on the district. The district administered 8 Wildland Fire Use (WFU) fires that involved a total of 86,293.20 acres managed for resource benefit. This acreage total includes the Papoose fire acres that burned onto the district. Total acres burned on the Krassel district (including the WFU's) is 324,529.50 acres and 19 fires.

Krassel fire resources included helicopter H2HX (T-3), 12 rappellers, and two fire lookouts. Sheepsteer Lookout was not staffed all summer.



Subunit	Human				Lightning				Total			
	Fires		Acres		Fires		Acres		Fires		Acres	
	2007	Avg	2007	Avg	2007	Avg	2007	Avg	2007	Avg	2007	Avg
Council	12	5	663.35	984.79	18	20	26,157.32	2,495.12	30	25	26,802.57	3,479.91
Weiser	4	3	32.30	452.64	8	8	23,763.30	2,357.81	12	11	23,795.60	2,810.45
New Meadows	3	4	3.60	100.31	12	23	8.96	7,529.57	15	27	12.56	7,629.87
McCall	2	3	10.1	130.85	17	32	95,776.61	7,493.52	19	35	95,786.71	7,624.37
Krassel	0	2	0.00	467.27	19	47	324,529.50	35,501.47	19	49	324,529.50	35,968.74
Total	21	18	709.35	2,135.86	74	127	470,235.69	55,377.49	95	145	470,927.04	56,205.48

Payette Regular Crew

The 20-person, Type 21A Payette Regular Crew was mobilized to six incidents in 2007. The crew spent a total of 16.6 days on assignment off-unit. They also supported the East Zone Complex, Little French Fire, and Deep Creek Fire locally.

2007 Payette Regular Crew Off-Unit Assignments

Incident \$	Incident Name	Mob Date	Demob Date	Days
WY-BTF-000004	Horse Creek	06/26/07	07/02/07	6.1
UT-EBC-000002	2007 EBC Support	07/08/07	07/04/07	1.9
UT-NWS-000321	Rocky Mouth	07/04/07	07/04/07	0.6
UT-NWS-000324	Sterling Hollow	07/04/07	07/06/07	1.5
UT-EBC-000004	EBC Preposition	07/06/07	07/07/07	1.5
ID-STF-001943	Black Pine	07/07/07	07/12/07	5.0

8. PAYETTE FOREST HELICOPTER USE SUMMARY

Four exclusive use helicopters were contracted on the Payette Forest during the 2007 fire season. Price Valley Helibase hosted two helicopters (Bell 205 A1++ and a Bell 212HP) and 24 rappellers. N215KA (Bell 212HP) was on a split contract with the Fishlake National Forest and staffed by mostly Price Valley personnel. A Bell 407 helicopter and a crew of 13 rappellers were located at the Krassel Helibase. The four ships combined for 785.5 hours of total flight time. All helibases filled numerous operational and helitack ICS positions during the 2007 fire season.

Helicopter Use Summary 2007

Data					
Base Name	McCall	Krassel	Price Valley		Total
Make and Model of Aircraft	S-61	Bell 407	Bell 205 A1++	Bell 212 HP	
FAA Number	N116AZ	N2HX	N669H	N215KA	
Number of persons on Crew	6	13	12	12	42
Number of Initial Attacks	16	10	34	22	82
Number of Large Fires	10	7	10	13	40
Total Fire Flight Hours	263.9	152.6	251.1	280.0	884.6
Total Non-Fire Flight Hours	22.1	0.0	1.7	100.1	123.9
Total Flight Hours	286	152.6	252.8	380.1	785.5
Total Contract Cost	\$1,987,723.90	\$509,304	\$820,391.95	\$1,317,057.07	\$4,634,476.92
Total Number of Passengers Transported	0	651	1,750	1,494	3,895
Total Pounds of Internal Cargo	0	30,475	139,594	164,352	347,696
Total Pounds of External Cargo	0	32,175	159,786	1,557,350	1,749,311
Total Gallons of Water/Retardant Dropped	1,561,248	41,424	273,079	388,622	2,264,373
Rappel Information					
Number of Rappellers	N/A	13	12	12	37
Number of Training Rappels	N/A	152	296	229	677
Number of Operational Rappels	N/A	18	55	42	115
Number of Fires Staffed by Rappellers	N/A	4	9	8	21
Number of Cargo Letdowns	N/A	21	50	35	106
Aerial Ignition					
Crew Aerial Ignition Certified	N/A	Yes	Yes	Yes	
Aerial Ignition Equipment (Helitorch - PSD)	N/A	0 - 6	4 - 6		
Hours Flown on Aerial Ignition	N/A	0.7	0	0.0	0.7
Other					
Number of Person Days on Fires	90	626	1028		1744
Flight Hours for Non-Federal Agencies	10	0.0	3.4	14.2	27.6

2007 N669H Off-Unit Assignments

Incident #	Incident Name	Mob Date	Demob Date	Days
ID-NPF-000004	Lake	06/14/07	06/14/07	.1

2007 N2HX Off-Unit Assignments

Incident #	Incident Name	Mob Date	Demob Date	Days
WY-BTF-000004	Horse Creek	07/07/07	07/17/07	10.0

9. SMOKEJUMPER OPERATIONS

Season Summary

McCall Smokejumpers made a total of 383 fire jumps in 2007. Additionally, they supported smokejumper operations New Mexico, Pocatello, ID, Salmon, ID and Ogden, UT.

McCall Smokejumpers filled 157 single resource assignments.

2007 McCall Smokejumper Activity at Other Bases

Base	# of Fires Jumped	# of McCall SMKJ's
Nez Perce NF	2	4
West Yellowstone NP	1	1
Custer NF	1	1
Mendocino NF	2	11
Gila NF	5	8
Tonto NF	1	1
Kaibab	1	2
Total	13	28

2007 Smokejumper Activity From McCall, ID

Location	# of Fires Jumped	# of McCall SMKJ's	# of Other SMKJ's
Payette NF	18	120	8
Nez Perce NF	7	35	
Salmon-Challis NF	5	36	3
SITPA	1	7	
Clearwater NF	5	12	
Bridger-Teton	3	32	
Sawtooth NF	2	16	
South Central Idaho	2	8	
Craig Colorado	1	12	
Beaverhead/Deerlodge NF	1	2	
Umatilla NF	1	8	2
Vale BLM	1	2	
Boise NF	1	4	
Nevada BLM	1	6	
Elko BLM	1	2	
Total	54	346	13

The McCall Smokejumpers also spent a total of 231 person-days engaged in prescribed fire activity.

2007 McCall Smokejumper Prescribed Fire Activity

Geographic Area	Person-Days
Eastern Great Basin	8
Rocky Mountain	28
Southern Area	79
Southwest Area	96
Western Great Basin	20
Total	231

Aircraft

The McCall jump aircraft fleet consisted of a turbine DC-3 (J-42), crewed with two pilots and two spotters, and two Twin Otter aircraft (J-41 & J-43), each with a single pilot and two spotters. The three aircraft flew a combined total of 566.1 hours in 2007.

Personnel

Sixty three smokejumpers, including seven rookies, completed training this season. Seven members of the crew detailed into fire-related positions on subunits outside the smokejumper organization. Three members of the crew were on Incident Management Teams.

Facilities and Tours / Public Relations

Nearly 2,000 visitors toured the McCall Smokejumper facilities this year. Two smokejumpers participated in demonstration jumps at the Smokejumper reunion. A smokejumper was highlighted in the October issue of Popular Mechanics for the "This is My Job" column.

Loft

Sewing projects dominated the winter months, maintaining and manufacturing smokejumper gear and equipment as well as manufacturing gear for other agency wildland resource units. Parachute rigging and rigger training occupied the summer months in the loft. Loft personnel rigged approximately 1,488 main and reserve parachutes. Five individuals successfully completed work and testing for FAA Parachute Rigger certificates with two Master Rigger certifications pending.

Para-cargo

McCall Smokejumpers delivered 522 bundles of standard smokejumper cargo weighing a total of 30,974 pounds and 14,033 pounds of nonstandard cargo.

10. AIRTANKER USE SUMMARY

The McCall Tanker Base administered two Air Tractor 802 Single Engine air tankers (S.E.A.T.) and one P3 Orion Type 1 air tanker. The two S.E.A.T.'s were contracted through the Idaho Department of Lands (IDL) from Evergreen Flying Services, Inc. Daily contract availability was paid by IDL and the hourly flight rate was paid by the ordering agency. The McCall Tanker Base provided the retardant, facility, and on-site management.

Nineteen air tankers made a total of 766 flights and delivered 847,094 gallons of retardant to 49 different incidents.

2007 McCall Tanker Base - Summary by Air Tanker

Tanker	Gallons	# Flights	Flight Time	Retardant Cost \$	Flight Cost \$	Extended Standby \$	Total A/C Costs \$
00	124,811	53	34.98	111,830.64	219,001.66	4182.00	335,014.30
05	4,006	2	1.38	3,589.38	4,602.30	492.00	8,683.68
10	2,001	1	0.92	1,792.90	3,384.68	0.00	5,177.58
11	23,836	12	8.33	21,357.06	30,646.07	861.00	52,864.13
20	12,776	6	6.68	11,447.30	41,872.71	615.00	53,935.01
21	58,814	25	14.78	52,697.35	92,508.02	2706.00	147,911.37
22	2,555	2	0.97	2,289.28	6,071.23	0.00	8,360.51
25	127,141	52	28.28	113,918.32	177,004.52	2706.00	293,628.84
44	80,809	42	30.00	74,292.77	117,539.96	2050.00	193,882.73
192	179,049	248	150.33	159,755.90	331,618.57	14945.00	506,319.47
193	179,291	249	150.82	160,648.44	332,710.49	7595.00	500,953.93
405	17,312	24	18.62	15,511.56	41,364.37	840.00	57,715.93
406	9,324	13	9.97	8,354.30	22,148.37	560.00	31,062.67
415	3,457	5	3.47	3,097.48	6,589.53	280.00	9,967.01
441	701	1	1.50	628.10	3,443.40	264.00	4,335.50
444	0	1	0.85	0.00	2,042.55	264.00	2,306.55
481	6,770	10	8.28	6,065.91	19,714.16	404.00	26,184.07
484	13,693	19	13.12	12,268.94	20,577.46	896.00	33,742.40
485	748	1	1.43	670.21	3,354.21	264.00	4,288.42
Total	847,094	766	484.72	\$760,215.84	\$1,476,194.26	\$39924.00	\$2,276,334.10

2007 McCall Tanker Base - Summary by Air User

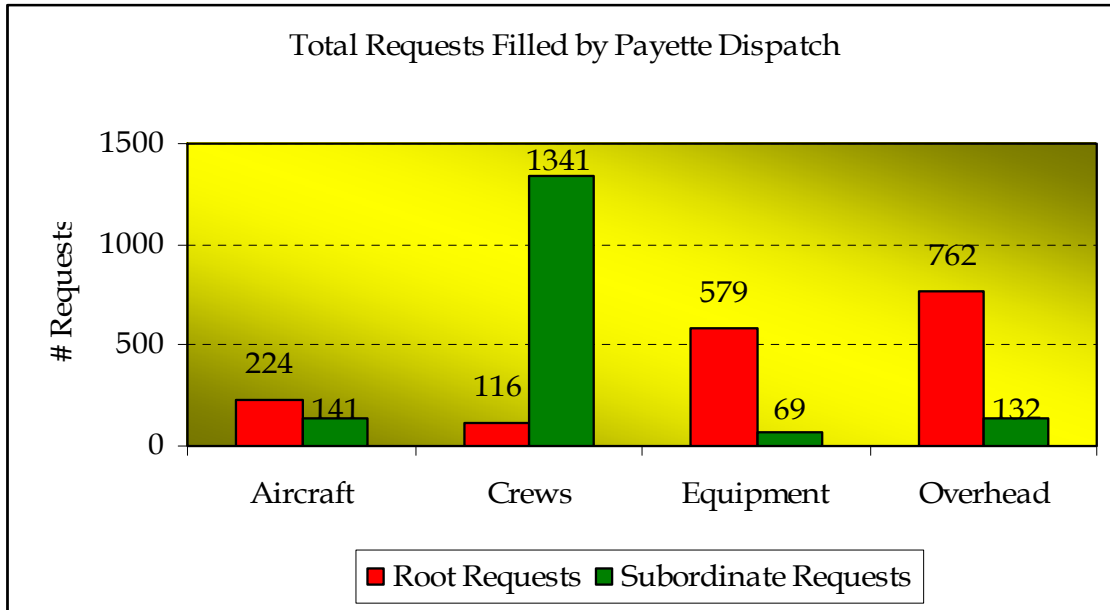
Incident Name	# Flights	Gallons Retardant	Retardant Cost	Flight Time	Total Flight Cost	Extended Standby	Total Cost
Clearwater NF							
Boundary Junction	2	1,415	1,267.94	2.05	4,554.08	525	6,347.02
Total	2	1,415	\$1,267.94	2.05	\$4,554.08	525	\$6,347.02
Nez Perce NF							
Cannon Ball	8	5,756	5,157.38	4.92	10,907.57	0	16,064.95
Chimney	2	1,404	1,257.99	2.90	6,442.36	420	8,120.35
Rattlesnake	4	2,863	2,565.25	3.35	7,442.03	0	10,007.28
Sampson	2	1,413	1,266.05	1.27	2,821.31	0	4,087.36
Total	16	11,436	\$10,246.67	12.43	\$27,613.27	420	\$38,279.94
Boise NF							
Bonneville	4	2,821	2,527.61	2.38	5,309.39	0	7,837.00
Cascade Complex	153	142,463	127,646.84	90.43	233,805.43	6433	367,885.27
Little Jack	3	2,161	1,936.25	2.92	6,033.20	0	7,969.45
Middle Fork Complex	27	35,472	31,782.93	18.78	60,242.89	492	92,517.82
Mormon	10	7,304	6,544.39	7.85	16,734.94	630	23,909.33
Riordan	36	90,963	81,502.85	19.48	121,925.32	3567	206,995.17
Thorn	2	1,407	1,260.67	1.48	2,888.65	0	4,149.32
Total	235	282,591	\$253,201.54	143.33	\$446,939.82	11122	\$711,263.36
Payette NF							
44 Fire	2	1,456	1,304.58	0.63	1,399.55	0	2,704.13
Brownlee Dam	1	0	0.00	1.37	8,574.83	0	8,574.83
Chinook	1	701	628.10	0.58	1,288.47	70	1,986.57
Chimney Rock	4	2,856	2,558.98	2.32	5,153.88	0	7,712.86
China	4	2,833	2,538.37	2.83	6,286.85	315	9,140.22
Chinook	1	707	633.47	0.72	1,599.48	35	2,267.95
Deep Creek	8	5,853	5,244.28	6.30	13,995.45	0	19,239.73
East Zone	60	78,532	70,364.69	32.37	112,612.59	2961	185,938.28
Fisher	8	5,633	5,047.17	3.07	6,797.80	420	12,264.97
Gray's Creek	138	154,701	138,612.11	76.53	218,208.94	5664	362,485.05
Green Mountain	18	19,285	17,279.36	6.12	18,679.37	684	36,642.73
Horton	29	38,962	34,909.95	12.08	48,727.74	1806	85,443.69
Indian Valley	4	2,804	2,512.38	2.27	5,042.81	0	7,555.19
Krassel	4	2,853	2,556.29	2.70	5,998.06	210	8,764.35
Loon	16	29,923	26,811.01	10.22	52,478.27	0	79,289.28
Payette ABCD	0	0	0.00	0.00	0.00	4935	4,935.00
Peck	28	19,532	17,500.67	16.95	41,633.41	420	59,554.08
Slide	2	1,360	1,218.56	1.38	3,065.68	0	4,284.24
Spring	1	1,826	1,636.10	0.78	2,869.62	0	4,505.72
Tepee Springs	10	10,760	9,638.27	4.50	14,137.22	315	24,090.49
Warm Springs	37	32,715	29,312.64	35.25	99,744.22	1483	130,539.86
Total	376	413,292	\$370,306.98	218.97	\$668,294.24	19318	\$1,057,919.22
Salmon-Challis NF							
Basin Fire	6	4,309	3,860.86	6.50	14,439.75	420	18,720.61
Dry Gulch	2	1,406	1,259.78	2.30	4,489.12	315	6,063.90
Lake	1	2,005	1,796.48	1.43	5,260.97	0	7,057.45
Pine Creek	4	2,818	2,524.93	6.45	14,328.68	420	17,273.61
Van Horn	10	7,054	6,320.38	12.68	28,190.84	525	35,036.22
Total	23	17,592	\$15,762.43	29.37	\$66,709.36	1680	\$84,151.79

Sawtooth NF							
Deadeye	1	2,557	2,291.07	1.45	9,075.55	369	11,735.62
Total	1	2,557	\$2,291.07	\$1.45	\$9,075.55	369	\$11,735.62
Region 04							
Regional Severity	0	0	0.00	0.00	0.00	175	175.00
Total	0	0	\$0.00	0.00	\$0.00	175	\$175.00
Wallowa-Whitman NF							
Incident 543	2	0	0.00	1.95	4,331.93	0	4,331.93
Total	2	0	\$0.00	1.95	\$4,331.93	0	\$4,331.93
BLM							
Bohannon	2	1,402	1,256.19	3.60	7,997.41	0	9,253.60
Boulder Creek	2	4,362	3,908.35	1.95	9,547.65	492	13,948.00
Murphy Complex	2	4,561	4,086.65	2.85	14,226.15	0	18,312.80
Nichol	2	1,216	1,089.54	2.67	5,211.28	525	6,825.82
Pequop Springs	1	2,426	2,173.70	1.45	9,075.55	492	11,741.25
Sandy	3	6,450	5,779.21	3.70	16,837.30	1107	23,723.51
Sweetwater	0	0	0.00	0.97	6,071.23	0	6,071.23
Tongue Complex	4	9,635	10,520.85	4.97	27,184.88	861	38,566.73
Wood Creek	4	2,827	2,532.99	3.55	7,864.13	0	10,397.12
Total	20	32,879	\$31,347.48	25.70	\$104,015.58	3477	\$138,840.06
Idaho Department of Lands							
Bowman Gulch	2	1,414	1,266.94	1.48	3,310.04	525	5,101.98
Dry Creek	4	9,745	8,731.52	4.08	25,536.72	492	34,760.24
Ott 7	1	2,557	2,291.07	0.97	6,071.23	0	8,362.30
Poe Cabin	8	9,357	8,383.87	5.68	18,472.50	0	26,856.37
Russell Ridge	2	1,413	1,266.04	2.02	4,487.43	525	6,278.47
Sutter Creek	2	1,400	1,254.40	1.68	3,732.13	0	4,986.53
Tripod	2	1,446	1,295.62	2.83	5,523.57	0	6,819.19
Total	21	27,332	24,489.46	18.75	67,133.62	1542	93,165.08
OR -NWC							
Shelton	1	2,413	2,162.05	1.27	7,948.93	246	10,356.98
Total	1	2,413	\$2,162.05	1.27	\$7,948.93	246	\$10,356.98
SITPA							
Bogus	4	2,908	2,605.57	2.77	5,386.94	0	7,992.51
Kennally	6	4,268	3,824.13	1.88	4,176.42	0	8,000.55
North Fork	55	45,600	40,191.86	22.02	53,838.74	1050	95,080.60
Smith Ferry	4	2,811	2,518.66	2.78	6,175.78	0	8,694.44
Total	69	55,587	\$49,140.22	29.45	\$69,577.88	1050	\$119,768.10
Grand Total	766	847,094	\$760,215.84	484.72	\$1,476,194.26	39924	\$2,276,334.10

11. RESOURCE REQUESTS PROCESSED

Fire occurrence on the Payette Forest was below average in numbers, but well above average in acreage. Regardless, forest personnel and the Payette Dispatch Center were busy supporting other units in land management activities. The data below was extracted from the Resource Ordering and Status System (ROSS). Supply orders are not always processed using ROSS and are not included in the data. The center filled a total of 2,537 requests including 1,165 off-unit requests.

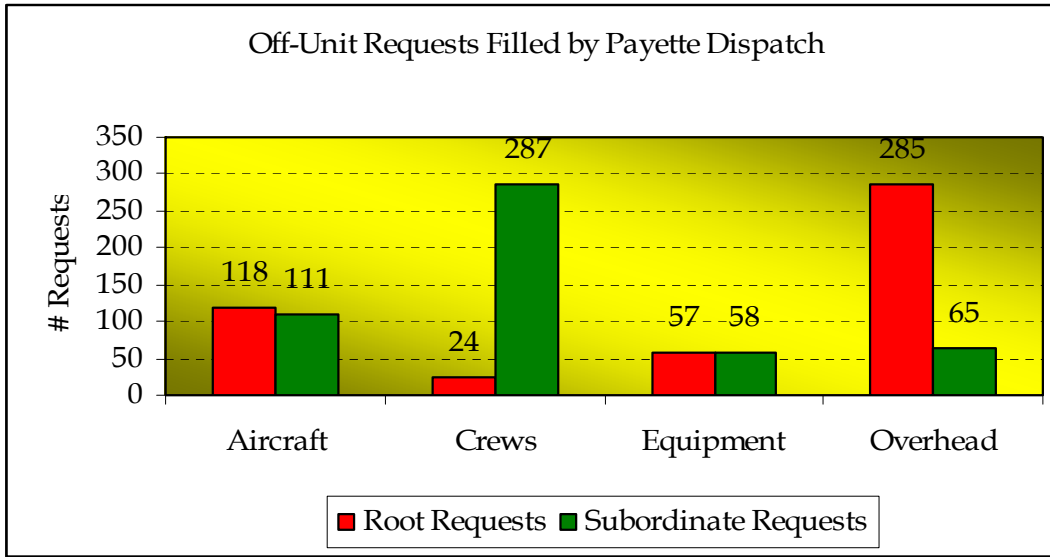
Payette Expanded Dispatch was activated on 07/14/07 and supported large fire activity on the forest until 09/28/07.



Total Requests Filled by Payette Dispatch Center

Aircraft		Crew		Equipment		Overhead		Total	
Root	Sub	Root	Sub	Root	Sub	Root	Sub	Root	Sub
224	141	116	1341	579	69	762	132	1681	1683

The Root requests describe the main request, such as the “crew” request. The Subordinate requests describe the requests under the main request, such as the individuals on the crew.



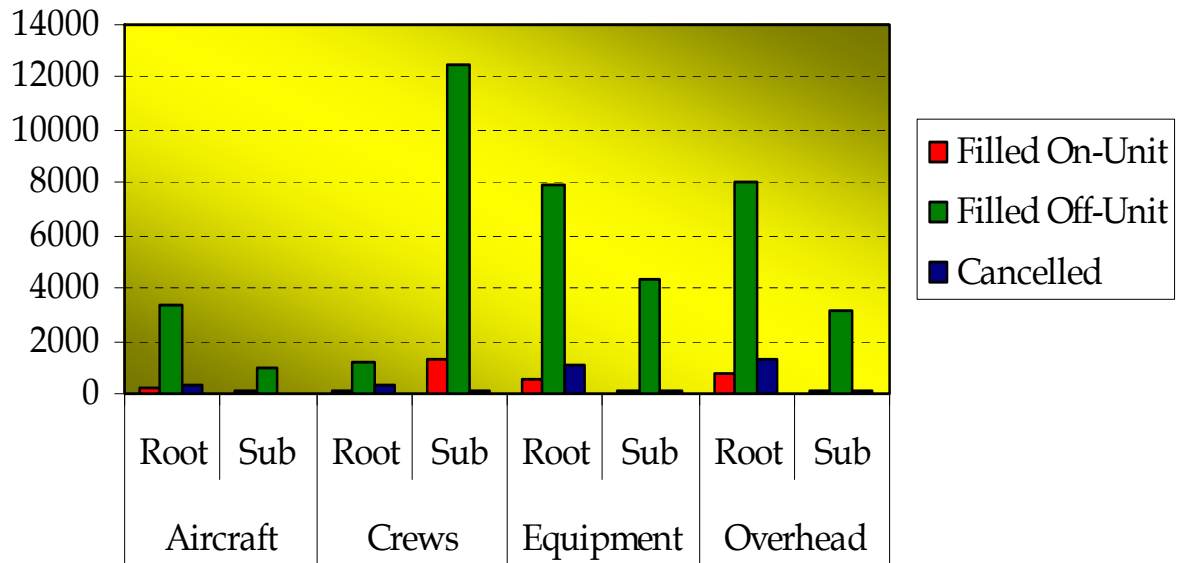
Off-Unit Requests Filled by Payette Dispatch Center

Aircraft		Crew		Equipment		Overhead		Total	
Root	Sub	Root	Sub	Root	Sub	Root	Sub	Root	Sub
118	111	24	287	57	58	285	65	484	521

Off-Unit Root and Subordinate Requests By GAC Filled by Payette Dispatch Center

Incident Host GACC	Aircraft	Crew	Equipment	Overhead	Total
Alaska Interagency Coordination Center				1	1
Eastern Area Coordination Center				7	7
Eastern Great Basin Coordination Center	194	277	98	189	947
Northern Rockies Coordination Center	13			20	33
Northern California Geographic Coordination Center	13	2			15
Northwest Coordination Center	11		1	15	27
Rocky Mountain Area Coordination Center	2	11		9	22
Southern Area Coordination Area			4	25	29
Southern California Geographic Coordination Center	7	11		24	
Southwest Area Coordination Center	2			27	29
Western Great Basin Coordination Center		21	1	20	42
Total	242	322	104	337	1005

Requests Generated by Payette Dispatch Filled On- and Off-Unit



Requests Generated By Payette Dispatch Filled On and Off-Unit

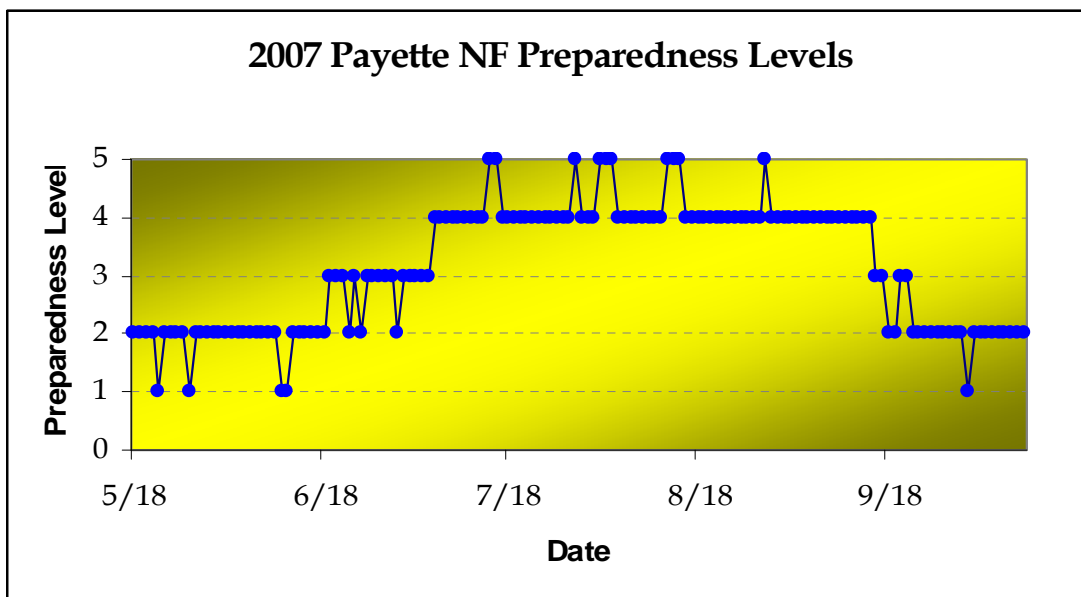
Catalog	Filled On-Unit			Filled Off-Unit			Cancelled UTF		
	Root	Sub	Total	Root	Sub	Total	Root	Sub	Total
Aircraft	224	141	365	3350	930	4280	373	22	395
Crew	116	1341	1457	1201	12478	13679	277	135	412
Equipment	579	69	648	7893	4337	12230	1132	71	1203
Overhead	762	132	894	7997	3139	11136	1286	92	1378
Total	1,681	1,683	3,364	20,441	20,884	41,325	3,068	320	3,388

12. SUMMARY OF PAYETTE NATIONAL FOREST STATISTICS

Payette N.F. Fire Activity (Including WFU) 1988 – 2007

Year	Lightning Fires	Lightning Acres	Human Fires	Human Acres	Total Fires	Total Acres
2007	74	470,217.69*	21	709.35	85	470924.04*
2006	149	70,535.4	21	9.2	170	70,544.6
2005	48	70,118.9	24	3,433.9	72	73,552.8
2004	58	1,458.0	15	400.8	73	1,858.8
2003	71	23,322.8	21	1,997.8	92	25,320.6
2002	125	856.5	20	28.6	145	885.1
2001	78	3,068.2	27	328.1	105	3,396.3
2000	111	343,180.4	14	169.7	125	343,350.1
1999	102	14,941.3	31	5,996.6	133	20,937.9
1998	118	12,440.5	8	43.9	126	12,484.4
1997	45	110.2	13	94.1	58	204.3
1996	144	9,845.2	21	154.7	165	9,999.9
1995	121	65.4	10	2.1	131	67.5
1994	271	302,651.4	19	82.9	290	302,734.3
1993	55	10.5	8	30.7	63	41.2
1992	177	34,785.3	20	2,872.8	197	37,658.1
1991	145	1,677.3	26	8,816.6	171	10,493.9
1990	176	10,572.0	20	22.3	196	10,594.3
1989	380	39,624.9	11	78.8	391	39,703.7
1988	87	89,245.6	17	16,339.1	104	105,584.7

*Numbers include fires that started on other forests that burned onto to Payette (34,263 acres of the Monumental Fire and 3,890 acres of the Papoose WFU)



2007 Payette N.F. Wildland Fires by Owner

Number of Fires	Total Acreage	Ownership at Origin of Fire
71	383,371.89	Forest Service
4	45.6	Bureau of Land Management
17	25,595.55	Private
3	23,760.3	State

2007 Payette N.F. Wildland Fires

S.O. #	Start Date	Fire Name	Incident #	Legal			Latitude			Longitude			Sub Unit	Total Acres	Cause	Owner	Out Date	Firecode
				TwN	Rng	Sec	Deg	Min	Sec	Deg	Min	Sec						
1	4/24/07	Mill Creek	ID-PAF-07005	18N	03W	25	44	52	3	116	39	10	1	0.1	H	PRI	4/26/07	P4DDJ4
2	5/11/07	Stony Point	ID-PAF-007009	17N	02W	29	44	47	13	116	35	59	1	0.1	H	STATE	5/14/07	P4DE6N
3	5/31/07	Boy Hootie	ID-PAF-007011	11N	07W	5	44	18	58	117	11	59	2	2	H	PRI	6/1/07	P4DG18
4	6/15/07	Bear	ID-PAF-007015	20N	03W	35	45	2	5	116	40	17	1	0.25	H	PRI	6/18/07	P4DH7R
5	6/21/07	Kat	ID-PAF-007020	21N	3W	11	45	10	5	116	39	37	1	0.1	L	FS	6/21/07	P4C65D
6	6/30/07	Brownlee Dam	ID-PAF-007025	17N	05W	2	44	50	11	116	54	0	1	80	H	PRI	7/14/07	P4DLL2
7	7/2/07	Lakey	ID-PAF-007030	15N	01W	31	44	35	44	116	30	10	1	1.5	H	PRI	7/2/07	P4DL3S
8	7/4/07	Indian Ridge	ID-PAF-007031	11N	07W	27	44	15	45	117	9	22	2	4.3	H	PRI	7/6/07	P4DMQ5
9	7/5/07	Pinehurst	ID-PAF-007032	22N	01W	4	45	16	38	116	20	40	3	1	H	PRI	7/5/07	P4DNA1
10	7/6/07	Spring	ID-PAF-007033	12N	07W	25	44	20	38	117	8	1	2	0	L	PRI	→ # 12	P4DNV3
11	7/6/07	Peck Mountain	ID-PAF-007034	18N	02W	30	44	52	13	116	37	34	1	136	L	FS	8/17/07	P4DNV7
12	7/6/07	Warm Springs	ID-PAF-007035	12N	6W	16	44	23	0	117	4	15	2	23760	L	STATE	8/17/07	P4DNZ5
13	7/7/07	Lost Fork	ID-PAF-007038	14N	2E	32	44	30	5	116	14	59	1	3.7	L	FS	7/10/07	P4C65D
14	7/7/07	Monroe	ID-PAF-007036	14N	6W	36	44	30	34	117	1	9	2	0.1	L	FS	7/11/07	P4C65D
15	7/7/07	Cottonwood	ID-PAF-007037	18N	2W	7	44	55	6	116	37	59	1	6	L	FS	7/9/07	P4C65D
16	7/7/07	Zena Creek	ID-PAF-007040	20N	6E	16	45	4	10	115	43	46	6	199408	L	FS	10/24/07	P4DP22
17	7/7/07	Williams Creek	ID-PAF-007039	19N	6E	2	45	0	42	115	40	53	6	0.1	L	FS	7/9/07	P4C65D
18	7/7/07	Poison	ID-PAF-007043	15N	2E	27	44	36	38	116	11	45	1	0.1	L	FS	7/9/07	P4C65D
19	7/7/07	Mica	ID-PAF-007042	15N	2E	27	44	36	20	116	11	59	1	0.5	L	FS	7/9/07	P4C65D
20	10/31/07	Sweet Tea	ID-PAF-008044	20N	2W	4	45	5	47	116	35	34	1	1.5	H	FS	11/26/07	P4D1Y4
21	7/7/07	Kiethly Creek	ID-PAF-007061	14N	4W	8	44	34	8	116	51	1	2	1	L	FS	7/9/07	P4C65D
22	7/7/07	Raines	ID-PAF-007058	23N	7E	24	45	18	53	115	32	39	4	78473.66	L	FS	10/23/07	P4DTK3
23	7/8/07	Wash Pan	ID-PAF-007062	15N	5W	1	44	39	39	116	53	25	2	1.5	L	FS	7/10/07	P4C65D
24	7/8/07	Blue Spring	ID-PAF-007063	15N	4W	7	44	39	8	116	52	13	2	0.5	L	FS	7/10/07	P4C65D

SO #	Start Date	Fire Name	Incident #	Legal			Latitude			Longitude			Sub Unit	Total Acres	Cause	Owner	Out Date	Firecode
				Twn	Rng	Sec	Deg	Min	Sec	Deg	Min	Sec						
25	7/8/07	Chimney Rock	ID-PAF-007064	21N	08E	7	45	10	39	115	31	59	4	1.5	L	FS	7/10/07	P4C65D
26	7/9/07	Haybale	ID-PAF-007070	23N	1E	32	45	17	21	116	21	21	3	0.1	H	PRI	7/28/07	P4DPT1
27	7/11/07	Rattlesnake	ID-PAF-007065	23N	1E	25	45	17	57	116	17	18	3	0.2	L	STATE	7/12/07	P4C65D
28	7/12/07	Slider	ID-PAF-007075	21N	8E	6	45	11	12	115	32	4	4	0.5	L	FS	7/14/07	P4C65D
29	7/12/07	China	ID-PAF-007076	22N	7E	30	45	13	30	115	38	17	4	4	L	FS	7/16/07	P4C65D
30	7/12/07	Chinook	ID-PAF-007077	22N	5E	26	45	13	36	115	47	51	4	0.75	L	FS	7/14/07	P4C65D
31	7/14/07	Schoolmarm	ID-PAF-007087	24N	1E	23	45	24	25	116	18	0	3	0.5	L	PRI	7/16/07	P4C65D
32	7/14/07	Indian	ID-PAF-007082	21N	1E	26	45	7	53	116	17	59	3	0.1	L	PRI	7/16/07	P4C65D
33	7/14/07	Sawpit	ID-APF-007088	18N	7E	16	44	54	0	115	36	59	6	0.5	L	FS	7/15/07	P4C65D
34	7/14/07	Rock Pile (Loon Fire)	ID-PAF-007083	21N	5E	29	45	7	31	115	52	24	4	0.1	L	FS	→ #44	P4C65D
35	7/14/07	Log	ID-PAF-007095	17N	7E	4	44	50	32	115	37	33	6	0.5	L	FS	7/15/07	P4C65D
36	7/14/07	Smith	ID-PAF-007093	22N	6E	16	45	15	5	115	43	8	4	0.5	L	FS	7/14/07	P4C65D
37	7/14/07	Steamboat	ID-PAF-007096	22N	6E	22	45	13	58	115	42	37	4	0.1	L	FS	7/15/07	P4C65D
38	7/14/07	Oxbow	ID-PAF-007086	20N	4W	33	45	1	19	116	46	59	1	40.5	L	BLM	7/22/07	P4C65D
39	7/14/07	Pita	ID-PAF-007110	21N	2W	24	45	8	41	116	31	25	1	0.1	L	FS	7/15/07	P4C65D
40	7/14/07	Upper Loon	ID-PAF-007104	21N	5E	16	45	7	59	115	51	41	4	0.1	L	FS	→ #44	P4C65D
41	7/14/07	Middle Loon	ID-PAF-007106	21N	5E	21	45	8	30	115	51	36	4	0.1	L	FS	→ #44	P4C65D
42	7/14/07	Lower Loon	ID-PAF-007107	21N	5E	21	45	8	42	115	51	12	4	0.1	L	FS	→ #44	P4C65D
43	7/14/07	West Enes	ID-PAF-007103	21N	5E	15	45	9	24	115	49	29	6	0.1	L	FS	→ #44	P4C65D
44	7/14/07	Loon Lake	ID-PAF-007107	21N	5E	21	45	8	16	115	51	22	4	15862	L	FS	→ #16	P4DP22
45	7/16/07	Pole Creek	ID-PAF-007111	16N	1W	7	44	45	57	116	30	32	1	0.1	H	BLM	7/16/07	P4DQ45
46	7/16/07	Loader	ID-PAF-007112	20N	3W	25	45	2	41	116	39	21	1	0.1	H	FS	7/16/07	P4DQ5Q
47	7/16/07	Sater	ID-PAF-007113	21N	3E	31	45	6	44	116	8	24	4	1	L	FS	7/17/07	P4C65D
48	7/14/07	Deep Creek	ID-PAF-007114	22N	3W	15	45	14	56	116	41	15	1	1051	L	FS	9/23/07	P6DQW6 (0616)
49	7/17/07	Miller	ID-PAF-007115	20N	1W	9	45	5	14	116	27	49	3	0.25	L	FS	7/8/07	P4C65D
50	7/17/07	Big Lebowski	ID-PAF-007117	18N	6E	9	44	55	2	115	44	7	6	0.5	L	FS	7/19/07	P4C65D
51	7/17/07	Teapot	ID-PAF-007116	18N	6E	9	44	54	28	115	44	0	6	3.6	L	FS	7/20/07	P4C65D
52	7/20/07	Indian Valley	ID-PAF-007118	13N	1W	11	44	28	53	116	24	39	1	578	H	PRI	7/28/07	P4DSN6
53	7/22/07	Camp	ID-PAF-007120	19N	3E	30	44	57	8	116	8	16	4	0.1	H	FS	7/22/07	P4DS1U
54	7/22/07	Fisher	ID-PAF-007121	20N	3E	15	45	4	42	116	4	59	4	10	H	FS	7/27/07	P4DS2S
55	7/25/07	Wet	ID-PAF-007123	25N	10E	30	45	29	6	115	16	59	6	1.5	L	FS	7/29/07	P4C65D
56	7/26/07	Krassel	ID-PAF-007126	19N	6E	16	44	59	10	115	43	41	6	2	L	FS	7/28/07	P4C65D
57	7/26/07	Grass Mountain	ID-PAF-007125	21N	2E	11	45	10	19	116	11	19	3	0.25	L	FS	7/27/07	P4C65D

SO #	Start Date	Fire Name	Incident #	Legal			Latitude			Longitude			Sub Unit	Total Acres	Cause	Owner	Out Date	Firecode
				Twn	Rng	Sec	Deg	Min	Sec	Deg	Min	Sec						
58	7/26/07	Aspen	ID-PAF-007127	18N	5E	35	44	51	22	115	48	34	6	0.5	L	FS	7/28/07	P4C65D
59	7/27/07	Partridge	ID-PAF-007128	24N	2E	36	45	22	40	116	9	23	3	0.5	L	FS	7/28/07	P4C65D
60	7/28/07	Green Mountain	ID-PAF-007129	17N	5E	8	44	49	45	115	51	59	4	25	L	FS	9/9/07	P4C65D
61	7/29/07	Round Indian	ID-PAF-007130	21N	1E	21	45	9	9	116	20	20	3	1	L	BLM	8/8/07	P4C65D
62	7/30/07	County Line	ID-PAF-007131	21N	2E	36	45	6	40	116	9	27	3	0.1	L	FS	7/31/07	P4C65D
63	7/30/07	Tepee Springs	ID-PAF-007133	21N	1E	14	45	9	41	116	16	45	3	4.7	L	BLM	10/5/07	P4C65D
64	8/1/07	Pearl	ID-PAF-007134	20N	4E	7	45	4	1	116	1	5	4	0.1	L	FS	8/2/07	P4C65D
65	8/1/07	Little French	ID-PAF-007135	22N	3E	21	45	14	12	116	5	16	3	1.16	L	FS	8/8/07	P4C65D
66	8/1/07	Horton	ID-PAF-007136	21N	3E	24	45	7	8	116	4	20	4	1407	L	FS	10/25/07	P4DP22
67	8/9/07	Pine	ID-PAF-007137	16N	04W	23	44	42	42	116	47	12	2	0.1	L	FS	8/11/07	P4C65D
68	8/10/07	Iron Mtn.	ID-PAF-007138	14N	06W	22	44	32	30	117	2	59	2	0.1	L	PRI	8/10/07	P4C65D
69	8/14/07	Bearpile	ID-PAF-007139	21N	3W	13	45	9	37	116	38	25	1	0.1	H	FS	8/18/07	P4DWU8
70	8/19/07	#179	ID-PAF-007140	22N	1E	26	45	13	28	116	18	6	3	2.5	H	PRI	8/20/07	P4DXJ0
71	8/26/07	Little Weiser	ID-PAF-007142	14N	1E	32	44	30	4	116	21	22	1	1.5	H	FS	8/27/07	P4DX85
72	8/30/07	Gray's Creek	ID-PAF-007143	14N	1E	17	44	33	31	116	21	46	1	24900	L	PRI	11/27/07	P4DY0D
73	8/30/07	44 Fire	ID-PAF-007144	16N	2E	29	44	44	24	116	14	42	1	0.5	L	FS	9/23/07	P4C65D
74	8/30/07	Fork	ID-PAF-007145	16N	2E	17	44	43	48	116	14	14	1	0.2	L	FS	9/23/07	P4C65D
75	8/31/07	Transformer	ID-PAF-007174	17N	5W	1	44	50	3	116	53	37	2	25	H	PRI	9/2/07	P4DY3W
76	8/31/07	Helena	ID-PAF-007148	21N	7W	7	45	10	4	116	38	8	1	0.1	L	FS	9/2/07	P4C65D
77	9/1/07	Klineschmidt	ID-PAF-007149	20N	4W	24	45	3	44	116	46	4	1	0.1	L	FS	9/1/07	P4C65D
78	9/1/07	Cuprum	ID-PAF-007150	20N	3W	16	45	4	23	116	42	25	1	0.1	L	FS	9/1/07	P4C65D
79	9/4/07	Lockwood Point	ID-PAF-007146	22N	1E	18	45	15	9	116	23	23	3	0.1	L	FS	9/5/07	P4C65D
80	9/4/07	Mouse	ID-PAF-007153	21N	3E	22	45	8	20	116	5	7	4	0.1	L	FS	9/5/07	P4C65D
81	9/5/07	2 Snag	ID-PAF-007154	16N	1E	21	44	43	3	116	20	36	1	0.1	L	FS	9/13/07	P4C65D
82	9/5/07	Weasel	ID-PAF-007155	18N	2W	3	44	55	33	116	33	59	1	0.12	L	FS	9/6/07	P4C65D
83	9/5/07	North Spot	ID-PAF-007156	17N	1E	33	44	46	16	116	20	49	1	0.1	L	FS	9/13/07	P4C65D
84	9/3/07	Profile	ID-PAF-007156	19N	8E	14	44	59	19	115	27	14	6	4556	L	FS	10/26/07	P4DP22
85	9/16/07	Citizen Tree	ID-PAF-007158	19N	1W	21	44	58	31	116	27	35	3	0.1	L	FS	9/16/07	P4C65D
86	10/25/07	Old Hornet	ID-PAF-007164	17N	1W	31	44	45	54	116	30	4	1	0.1	H	PRI	10/25/07	P4D1T2
87	10/29/07	Fourth Of July	ID-PAF-008003	14N	5W	5	44	34	33	116	57	49	2	1	H	FS	11/23/07	P4D1W6
801	6/17/07	Tag WFU	ID-PAF-007019	24N	13E	21	45	24	18	114	52	30	6	3890	L	FS	10/15/07	G4DP80
802	7/7/07	McCalla Creek WFU	ID-PAF-007041	23N	11E	15	45	20	26	115	6	15	6	47187	L	FS	8/21/07	G4DP80
803	7/7/07	Buckhorn	ID-PAF-007060	18N	5E	21	44	52	41	115	15	7	6	0.2	L	FS	8/21/07	G4DP80

SO #	Start Date	Fire Name	Incident #	Legal			Latitude			Longitude			Sub Unit	Total Acres	Cause	Owner	Out Date	Firecode
				Tw	Rng	Sec	Deg	Min	Sec	Deg	Min	Sec						
804	7/14/07	Goat WFU	ID-PAF-007090	20N	10E	30	45	2	37	115	17	6	6	2	L	FS	10/15/07	G4DP80
805	7/21/07	Cottonwood WFU	ID-PAF-007119	18N	11E	12	44	59	5	115	2	59	6	25907	L	FS	10/15/07	G4DP80
806	7/26/07	Sheephorn WFU	ID-PAF-007124	20N	10E	26	45	2	40	114	57	59	6	8887	L	FS	10/15/07	G4DP80
807	8/16/07	Whimstick WFU	ID-PAF-007141	23N	12E	33	45	17	37	114	59	15	6	17	L	FS	10/16/07	G4DP80
808	9/3/07	Cave WFU	ID-PAF-007152	20N	13E	21	45	14	29	114	52	7	6	3	L	FS	10/15/07	G4DP80

13. FORM FS-5100-8, PERSONNEL EMPLOYED ON FIRE CONTROL ACTIVITIES

USDA-Forest Service		UNIT	
PERSONNEL EMPLOYED ON WILDFIRE PRESUPPRESSION AND SUPPRESSION ACTIVITIES		Payette National Forest	
		CALENDAR YEAR 2007	
<p>INSTRUCTIONS:</p> <ol style="list-style-type: none"> Data for items 1a, 1b, and 2b should be taken from planning and budget records in the Supervisor's Office. Items 1c, 1d, 2b, and 2c may be obtained from actual records in the S.O. or from the Ranger District. If obtained from the Ranger having intimate knowledge on use of his personnel, these items may be estimated. Complete accuracy is not required. Item 3 may be estimated where large numbers of casuals are employed. Since each reemployment counts as a new employment, sufficient accuracy can be obtained by sample counts and measurement of time slips. 			
ITEM NO.	ITEM	NUMBER	
		SUB-TOTAL	TOTAL
1.	Regular appointed personnel		
	a. Full-time fire management (<i>20 pay periods or more</i>)	33	
	b. Part-time fire management	82	
	c. Others used on presuppression sometime during year	7	
	d. Others used on suppression (<i>exclude those reported under a, b, or c</i>)	8	
	e. Total (<i>a + b + c + d</i>)		130
2.	Seasonal or short-term personnel		
	a. Regular fire control (<i>crews, firefighters, patrol, lookouts, etc.</i>)	75	
	b. Others (<i>BD, KV, BR, R&T, etc.</i>) who spent time on fire control work	5	
	c. Emergency firefighters (<i>exclude those reported under a or b</i>)	2	
	d. Total (<i>a + b + c</i>)		82
3.	Total number of casuals employed on fire suppression (<i>Each reemployment counts as an employment</i>)		10
4.	Number of casuals (<i>included in Item 3</i>) employed for first time (<i>Ranger's estimate is adequate</i>)	1	
5.	GRAND TOTAL (<i>1e + 2d + 3</i>)		222
REMARKS (<i>if necessary</i>)			
SUBMITTED BY (<i>Signature</i>)		TITLE	
/s Coral Tily _____		Dispatch Intel Coordinator	

14. FORM FS-5100-9, LAND OWNERSHIP PROTECTION REPORT

USDA-FOREST SERVICE								Calendar Year 2007	
LAND OWNERSHIP PROTECTION REPORT (Summary of acres by states)								Region R-4 Payette National Forest	
STATE	INSIDE FOREST SERVICE PROTECTION BOUNDARIES							S&P LAND PROTECTED by STATE and FS	National Forest Land Protected Others
	PROTECTED BY THE FOREST SERVICE								
	State and Private Land				Other Federal	N F Land	Total		
	Fee Basis	Offset Basis	Reimburse Suppression	Without Reimbursement					
National Rec Area (NRA)									29,200
Salmon/Challis NF									7,817
Southern ID Timber (SITPA)		47,703							61,339
Payette National Forest						2,132,203			
Bureau of Land Mgmt					398,411				
Boise National Forest						23,655			8,148
Total		47,703			398,411	2,155,858			106,504