

PATIENT INFORMATION LEAFLET Questions and Answers About Taxotere® Injection Concentrate

What is Taxotere?

Taxotere is a medication to treat breast cancer, non-small cell lung cancer and prostate cancer. It has severe side effects in some patients. This leaflet is designed to help you understand how to use Taxotere and avoid its side effects to the fullest extent possible.

What is the most important information about Taxotere?

Since this drug, like many other cancer drugs, affects your blood cells, your doctor will ask for routine blood tests. These will include regular checks of your white blood cell counts. People with low blood counts can develop life-threatening infections.

Occasionally, serious allergic reactions have occurred with this medicine. If you have any allergies, tell your doctor before receiving this medicine.

A small number of people who take Taxotere have severe fluid retention, which can be life-threatening. To help avoid this problem, you must take another medication such as dexamethasone (DECKS-A-METH-A-SONE) prior to each Taxotere treatment.

If you are using any other medicines, tell your doctor before receiving your infusions of Taxotere.

How does Taxotere work?

Taxotere works by attacking cancer cells in your body. Different cancer medications attack cancer cells in different ways.

Here's how Taxotere works: Every cell in your body contains a supporting structure (like a skeleton). Damage to this "skeleton" can stop cell growth or reproduction. Taxotere makes the "skeleton" in some cancer cells very stiff, so that the cells can no longer grow.

How will I receive Taxotere?

Taxotere is given by an infusion directly into your vein. Your treatment will take about 1 hour. Generally, people receive Taxotere every 3 weeks. The amount of Taxotere and the frequency of your infusions will be determined by your doctor.

As part of your treatment, to reduce side effects your doctor will prescribe another medicine called dexamethasone. Your doctor will tell you how and when to take this medicine. It is important that you take the dexamethasone on the schedule set by your doctor.

What should be avoided while receiving Taxotere?

Taxotere can interact with other medicines. Use only medicines that are prescribed for you by your doctor and be sure to tell your doctor all the medicines that you use.

What are the possible side effects of Taxotere?

Low Blood Cell Count - Many cancer medications, including Taxotere, cause a temporary drop in the number of white blood cells. These cells help protect your body from infection.

Fever is often one of the most common and earliest signs of infection. Your doctor will recommend that you take your temperature frequently, especially during the days after treatment with Taxotere.

Allergic Reactions - This type of reaction, which occurs during the infusion of Taxotere, is infrequent. If you feel a warm sensation, a tightness in your chest, or itching during or shortly after your treatment, tell your doctor or nurse immediately.

Fluid Retention - This means that your body is holding extra water. If this fluid retention is in the chest or around the heart it can be life-threatening. If you notice swelling in the feet and legs or a slight weight gain, this may be the first warning sign.

Another multicenter open-label, randomized trial (TAX313), in the treatment of patients with advanced breast cancer who progressed or relapsed after one prior chemotherapy regimen.

Results from a second interim analysis (median follow-up 55 months) are as follows. In Study TAX 316, the docetaxel-containing combination regimen showed significantly longer disease-free survival (DFS) than FAC.

PATIENT INFORMATION LEAFLET Detach and give to Patient

PATIENT INFORMATION LEAFLET Questions and Answers About Taxotere® Injection Concentrate

What is Taxotere?

Taxotere is a medication to treat breast cancer, non-small cell lung cancer and prostate cancer. It has severe side effects in some patients. This leaflet is designed to help you understand how to use Taxotere and avoid its side effects to the fullest extent possible.

What is the most important information about Taxotere?

Since this drug, like many other cancer drugs, affects your blood cells, your doctor will ask for routine blood tests. These will include regular checks of your white blood cell counts.

Occasionally, serious allergic reactions have occurred with this medicine. If you have any allergies, tell your doctor before receiving this medicine.

A small number of people who take Taxotere have severe fluid retention, which can be life-threatening. To help avoid this problem, you must take another medication such as dexamethasone (DECKS-A-METH-A-SONE) prior to each Taxotere treatment.

If you are using any other medicines, tell your doctor before receiving your infusions of Taxotere.

How does Taxotere work?

Taxotere works by attacking cancer cells in your body. Different cancer medications attack cancer cells in different ways.

Here's how Taxotere works: Every cell in your body contains a supporting structure (like a skeleton). Damage to this "skeleton" can stop cell growth or reproduction. Taxotere makes the "skeleton" in some cancer cells very stiff, so that the cells can no longer grow.

How will I receive Taxotere?

Taxotere is given by an infusion directly into your vein. Your treatment will take about 1 hour. Generally, people receive Taxotere every 3 weeks.

As part of your treatment, to reduce side effects your doctor will prescribe another medicine called dexamethasone. Your doctor will tell you how and when to take this medicine. It is important that you take the dexamethasone on the schedule set by your doctor.

What should be avoided while receiving Taxotere?

Taxotere can interact with other medicines. Use only medicines that are prescribed for you by your doctor and be sure to tell your doctor all the medicines that you use.

What are the possible side effects of Taxotere?

Low Blood Cell Count - Many cancer medications, including Taxotere, cause a temporary drop in the number of white blood cells. These cells help protect your body from infection.

Fever is often one of the most common and earliest signs of infection. Your doctor will recommend that you take your temperature frequently, especially during the days after treatment with Taxotere.

Allergic Reactions - This type of reaction, which occurs during the infusion of Taxotere, is infrequent. If you feel a warm sensation, a tightness in your chest, or itching during or shortly after your treatment, tell your doctor or nurse immediately.

Fluid Retention - This means that your body is holding extra water. If this fluid retention is in the chest or around the heart it can be life-threatening. If you notice swelling in the feet and legs or a slight weight gain, this may be the first warning sign.

Another multicenter open-label, randomized trial (TAX313), in the treatment of patients with advanced breast cancer who progressed or relapsed after one prior chemotherapy regimen.

Results from a second interim analysis (median follow-up 55 months) are as follows. In Study TAX 316, the docetaxel-containing combination regimen showed significantly longer disease-free survival (DFS) than FAC.

PATIENT INFORMATION LEAFLET Questions and Answers About Taxotere® Injection Concentrate

What is Taxotere?

Taxotere is a medication to treat breast cancer, non-small cell lung cancer and prostate cancer. It has severe side effects in some patients. This leaflet is designed to help you understand how to use Taxotere and avoid its side effects to the fullest extent possible.

What is the most important information about Taxotere?

Since this drug, like many other cancer drugs, affects your blood cells, your doctor will ask for routine blood tests. These will include regular checks of your white blood cell counts.

Occasionally, serious allergic reactions have occurred with this medicine. If you have any allergies, tell your doctor before receiving this medicine.

A small number of people who take Taxotere have severe fluid retention, which can be life-threatening. To help avoid this problem, you must take another medication such as dexamethasone (DECKS-A-METH-A-SONE) prior to each Taxotere treatment.

If you are using any other medicines, tell your doctor before receiving your infusions of Taxotere.

How does Taxotere work?

Taxotere works by attacking cancer cells in your body. Different cancer medications attack cancer cells in different ways.

Here's how Taxotere works: Every cell in your body contains a supporting structure (like a skeleton). Damage to this "skeleton" can stop cell growth or reproduction. Taxotere makes the "skeleton" in some cancer cells very stiff, so that the cells can no longer grow.

How will I receive Taxotere?

Taxotere is given by an infusion directly into your vein. Your treatment will take about 1 hour. Generally, people receive Taxotere every 3 weeks.

As part of your treatment, to reduce side effects your doctor will prescribe another medicine called dexamethasone. Your doctor will tell you how and when to take this medicine. It is important that you take the dexamethasone on the schedule set by your doctor.

What should be avoided while receiving Taxotere?

Taxotere can interact with other medicines. Use only medicines that are prescribed for you by your doctor and be sure to tell your doctor all the medicines that you use.

What are the possible side effects of Taxotere?

Low Blood Cell Count - Many cancer medications, including Taxotere, cause a temporary drop in the number of white blood cells. These cells help protect your body from infection.

Fever is often one of the most common and earliest signs of infection. Your doctor will recommend that you take your temperature frequently, especially during the days after treatment with Taxotere.

Allergic Reactions - This type of reaction, which occurs during the infusion of Taxotere, is infrequent. If you feel a warm sensation, a tightness in your chest, or itching during or shortly after your treatment, tell your doctor or nurse immediately.

Fluid Retention - This means that your body is holding extra water. If this fluid retention is in the chest or around the heart it can be life-threatening. If you notice swelling in the feet and legs or a slight weight gain, this may be the first warning sign.

Another multicenter open-label, randomized trial (TAX313), in the treatment of patients with advanced breast cancer who progressed or relapsed after one prior chemotherapy regimen.

Results from a second interim analysis (median follow-up 55 months) are as follows. In Study TAX 316, the docetaxel-containing combination regimen showed significantly longer disease-free survival (DFS) than FAC.

PATIENT INFORMATION LEAFLET Questions and Answers About Taxotere® Injection Concentrate

What is Taxotere?

Taxotere is a medication to treat breast cancer, non-small cell lung cancer and prostate cancer. It has severe side effects in some patients. This leaflet is designed to help you understand how to use Taxotere and avoid its side effects to the fullest extent possible.

What is the most important information about Taxotere?

Since this drug, like many other cancer drugs, affects your blood cells, your doctor will ask for routine blood tests. These will include regular checks of your white blood cell counts.

Occasionally, serious allergic reactions have occurred with this medicine. If you have any allergies, tell your doctor before receiving this medicine.

A small number of people who take Taxotere have severe fluid retention, which can be life-threatening. To help avoid this problem, you must take another medication such as dexamethasone (DECKS-A-METH-A-SONE) prior to each Taxotere treatment.

If you are using any other medicines, tell your doctor before receiving your infusions of Taxotere.

How does Taxotere work?

Taxotere works by attacking cancer cells in your body. Different cancer medications attack cancer cells in different ways.

Here's how Taxotere works: Every cell in your body contains a supporting structure (like a skeleton). Damage to this "skeleton" can stop cell growth or reproduction. Taxotere makes the "skeleton" in some cancer cells very stiff, so that the cells can no longer grow.

How will I receive Taxotere?

Taxotere is given by an infusion directly into your vein. Your treatment will take about 1 hour. Generally, people receive Taxotere every 3 weeks.

As part of your treatment, to reduce side effects your doctor will prescribe another medicine called dexamethasone. Your doctor will tell you how and when to take this medicine. It is important that you take the dexamethasone on the schedule set by your doctor.

What should be avoided while receiving Taxotere?

Taxotere can interact with other medicines. Use only medicines that are prescribed for you by your doctor and be sure to tell your doctor all the medicines that you use.

What are the possible side effects of Taxotere?

Low Blood Cell Count - Many cancer medications, including Taxotere, cause a temporary drop in the number of white blood cells. These cells help protect your body from infection.

Fever is often one of the most common and earliest signs of infection. Your doctor will recommend that you take your temperature frequently, especially during the days after treatment with Taxotere.

Allergic Reactions - This type of reaction, which occurs during the infusion of Taxotere, is infrequent. If you feel a warm sensation, a tightness in your chest, or itching during or shortly after your treatment, tell your doctor or nurse immediately.

Fluid Retention - This means that your body is holding extra water. If this fluid retention is in the chest or around the heart it can be life-threatening. If you notice swelling in the feet and legs or a slight weight gain, this may be the first warning sign.

Another multicenter open-label, randomized trial (TAX313), in the treatment of patients with advanced breast cancer who progressed or relapsed after one prior chemotherapy regimen.

Results from a second interim analysis (median follow-up 55 months) are as follows. In Study TAX 316, the docetaxel-containing combination regimen showed significantly longer disease-free survival (DFS) than FAC.

Product information including ID number (50074275), Version (B), Country (USA), Date (2-2-05), Operator (DM), Logo version (SCV A2), Product desc (Inert, Taxotere, 80mg/20mg), Supplier (Dagenham), and Artwork created by (QuarkXpress 4.0, Mac format).

Color and Reflex information: Colors Used (Reflex Blue), Prefrooding (Date:), Signature (Date:), Regulatory (Date:), Functional (Date:), and Signature (Date:).

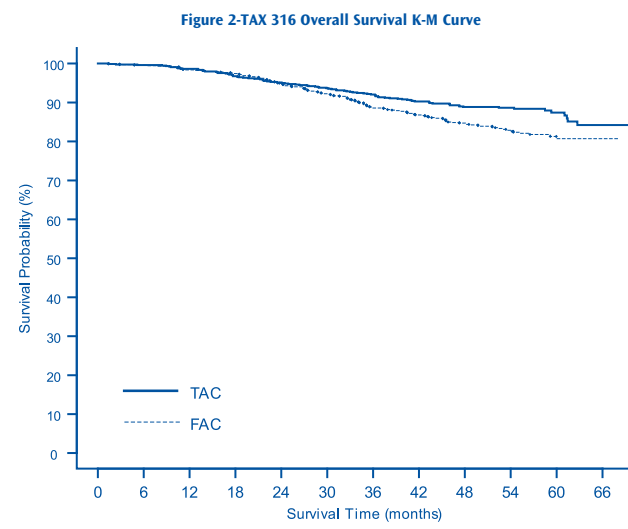
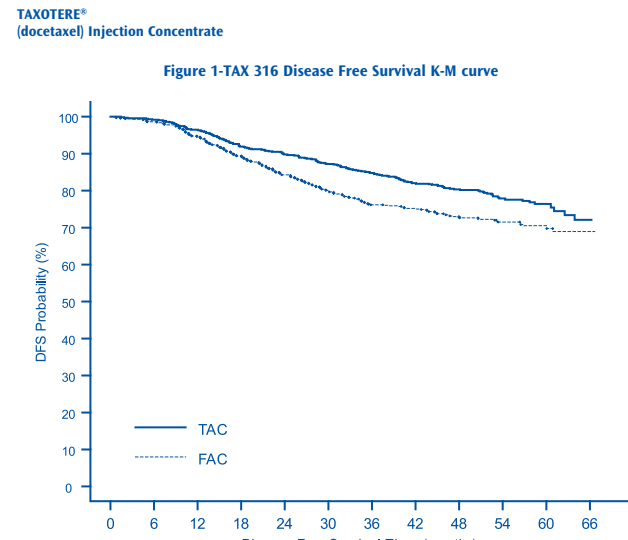
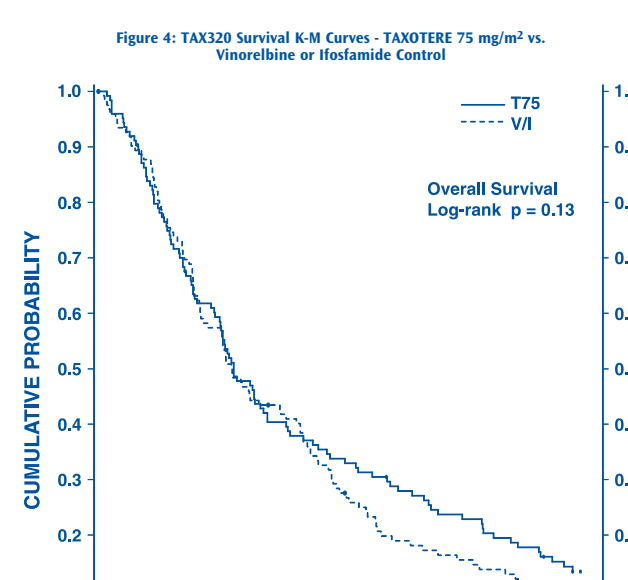
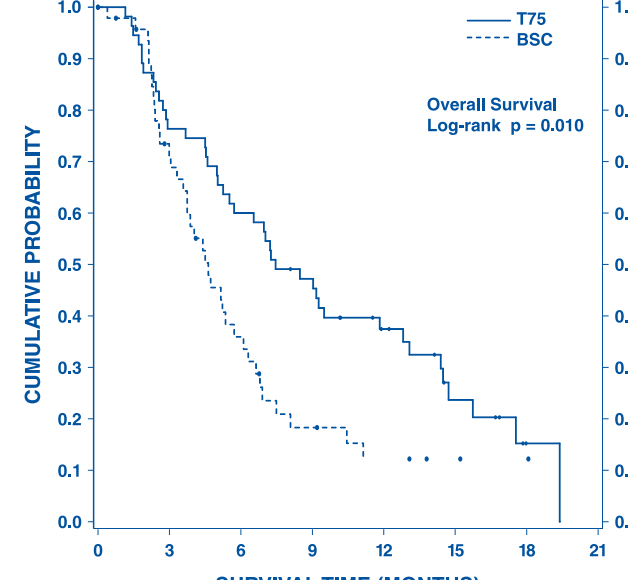


Table describing subgroup analyses for DFS and OS. Columns include Patient subset, Number of patients, Hazard ratio*, 95% CI, and Overall Survival Hazard ratio* and 95% CI.

Non-Small Cell Lung Cancer (NSCLC) The efficacy and safety of TAXOTERE has been evaluated in patients with unresectable, locally advanced or metastatic non-small cell lung cancer whose disease has failed prior platinum-based chemotherapy or in patients who are chemotherapy-naïve.

Prostate Cancer The safety and efficacy of TAXOTERE in combination with prednisone in patients with androgen independent (hormone refractory) metastatic prostate cancer were evaluated in a randomized multicenter active control trial.

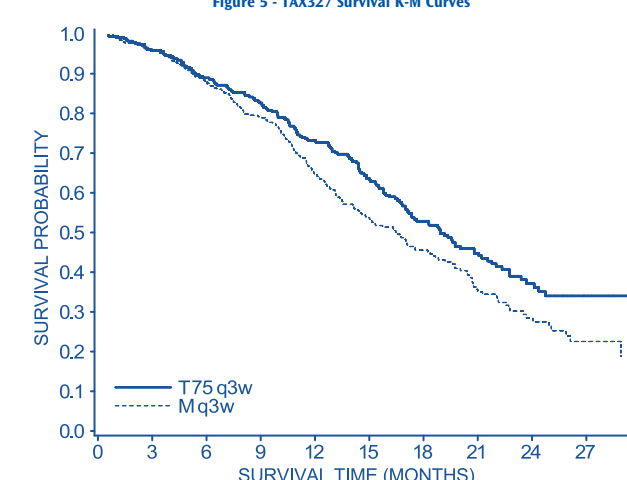


Patients treated with TAXOTERE at a dose of 75 mg/m2 experienced no deterioration in performance status and body weight relative to the comparator arms used in these trials.

Comparison Analysis of TAXOTERE in Combination Therapy for Chemotherapy-Naïve NSCLC. Table comparing Taxotere+cisplatin (n=408) and Vinorelbine+cisplatin (n=405) across various efficacy parameters like Median Survival, Hazard Ratio, and 95% CI.

Table 1: Response and TTP Analysis of TAXOTERE in Combination Therapy for Chemotherapy-Naïve NSCLC. Columns include Endpoint, Taxotere+ Cisplatin, Vinorelbine+ Cisplatin, and p-value.

Table 2: Efficacy of TAXOTERE in the Treatment of Patients with Androgen Independent (Hormone Refractory) Metastatic Prostate Cancer. Columns include Taxotere every 3 weeks and Mitoxantrone every 3 weeks.



INDICATIONS AND USAGE Breast Cancer TAXOTERE is indicated for the treatment of patients with locally advanced or metastatic breast cancer after failure of prior chemotherapy.

Prostate Cancer TAXOTERE in combination with prednisone is indicated for the treatment of patients with androgen independent (hormone refractory) metastatic prostate cancer.

CONTRAINDICATIONS TAXOTERE should not be administered to patients who have a history of severe hypersensitivity reactions to docetaxel or to other drugs formulated with polysorbate 80.

Warnings TAXOTERE should be administered under the supervision of a qualified physician experienced in the use of anti-neoplastic agents. Appropriate management of complications is possible only when adequate diagnostic and treatment facilities are readily available.

Precautions TAXOTERE should be administered under the supervision of a qualified physician experienced in the use of anti-neoplastic agents. Appropriate management of complications is possible only when adequate diagnostic and treatment facilities are readily available.

Adverse Reactions Fluid Retention In order to monitor the occurrence of myofasciitis, it is recommended that frequent peripheral blood cell counts be performed on all patients receiving TAXOTERE.

Fluid Retention In order to monitor the occurrence of myofasciitis, it is recommended that frequent peripheral blood cell counts be performed on all patients receiving TAXOTERE.

Fluid Retention In order to monitor the occurrence of myofasciitis, it is recommended that frequent peripheral blood cell counts be performed on all patients receiving TAXOTERE.

Fluid Retention In order to monitor the occurrence of myofasciitis, it is recommended that frequent peripheral blood cell counts be performed on all patients receiving TAXOTERE.

Fluid Retention In order to monitor the occurrence of myofasciitis, it is recommended that frequent peripheral blood cell counts be performed on all patients receiving TAXOTERE.

Fluid Retention In order to monitor the occurrence of myofasciitis, it is recommended that frequent peripheral blood cell counts be performed on all patients receiving TAXOTERE.

Fluid Retention In order to monitor the occurrence of myofasciitis, it is recommended that frequent peripheral blood cell counts be performed on all patients receiving TAXOTERE.

Fluid Retention In order to monitor the occurrence of myofasciitis, it is recommended that frequent peripheral blood cell counts be performed on all patients receiving TAXOTERE.

Fluid Retention In order to monitor the occurrence of myofasciitis, it is recommended that frequent peripheral blood cell counts be performed on all patients receiving TAXOTERE.

Fluid Retention In order to monitor the occurrence of myofasciitis, it is recommended that frequent peripheral blood cell counts be performed on all patients receiving TAXOTERE.

Fluid Retention In order to monitor the occurrence of myofasciitis, it is recommended that frequent peripheral blood cell counts be performed on all patients receiving TAXOTERE.



