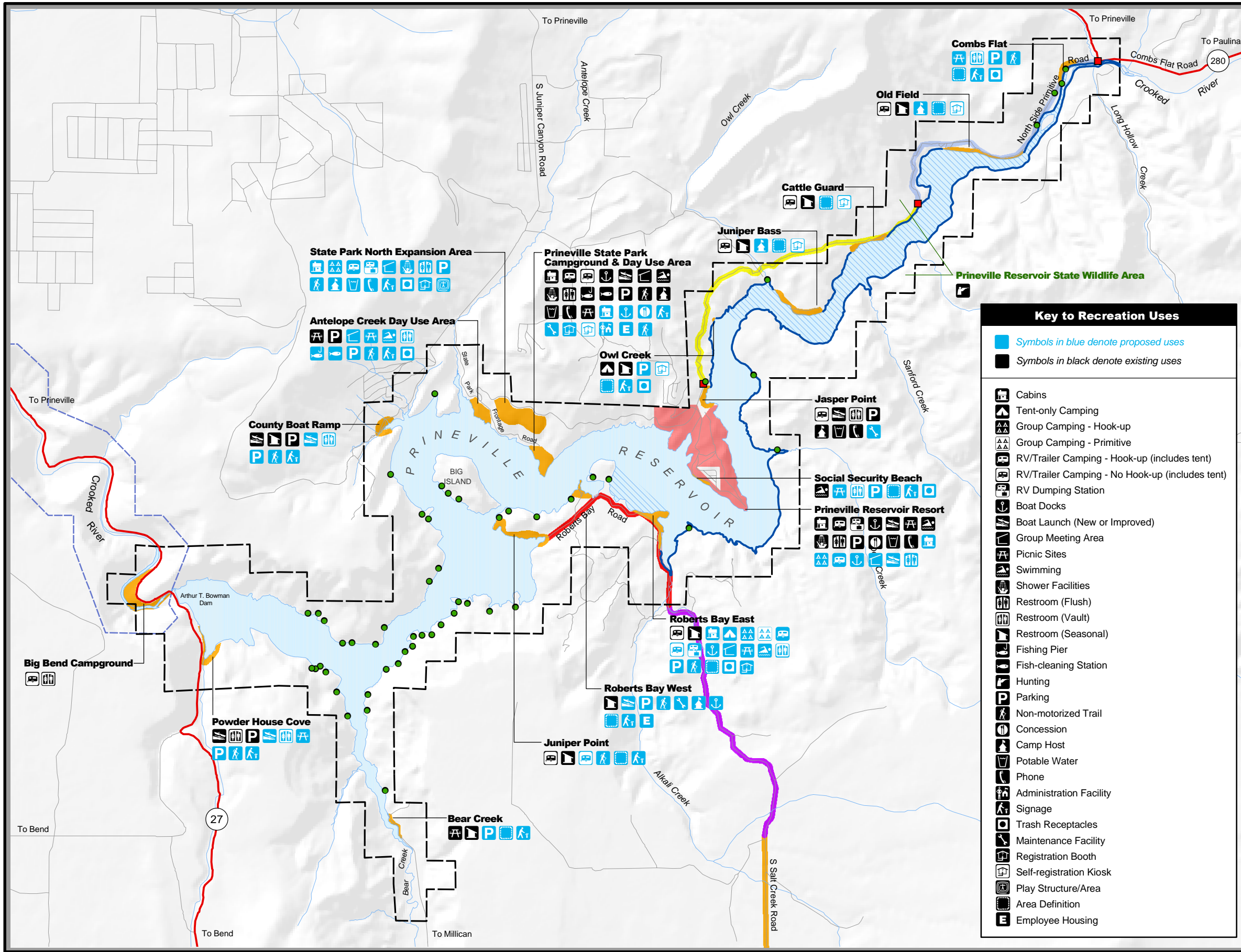
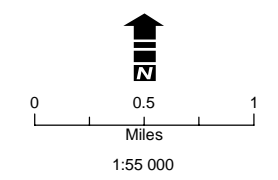


**Figure 5.2-1
Recreation & Road Access -
2003 RMP**



- North Side Primitive Road Access**
 Seasonal Road Closure (November 15 - April 15)
- Roberts Bay Road Access**
 Reclamation-maintained Road
 Determine and Resolve Road Access
 County-maintained Road
- Key to Recreation Uses**
- Undesignated Shoreline Recreation Site
 - Road Gate
 - Day Use Only (No Camping Allowed)
 - Prineville State Wildlife Area
 - Designated Recreation Site
 - Resort Concession Area
 - No-wake Zone, plus within 200 feet of shoreline, boat ramp, and marked swimming areas.
 - Wild & Scenic River Designation Area
 - Study Area Boundary
 - Highway
 - Road
 - Stream
 - Open Water

- Key to Recreation Uses**
- Symbols in blue denote proposed uses
 - Symbols in black denote existing uses
 - Cabins
 - Tent-only Camping
 - Group Camping - Hook-up
 - Group Camping - Primitive
 - RV/Trailer Camping - Hook-up (includes tent)
 - RV/Trailer Camping - No Hook-up (includes tent)
 - RV Dumping Station
 - Boat Docks
 - Boat Launch (New or Improved)
 - Group Meeting Area
 - Picnic Sites
 - Swimming
 - Shower Facilities
 - Restroom (Flush)
 - Restroom (Vault)
 - Restroom (Seasonal)
 - Fishing Pier
 - Fish-cleaning Station
 - Hunting
 - Parking
 - Non-motorized Trail
 - Concession
 - Camp Host
 - Potable Water
 - Phone
 - Administration Facility
 - Signage
 - Trash Receptacles
 - Maintenance Facility
 - Registration Booth
 - Self-registration Kiosk
 - Play Structure/Area
 - Area Definition
 - Employee Housing



P:\0e03401\GIS\mxd\RMP\Figure5.2-1.mxd
 Sources: USBR, BLM, EDAW 2003

Prineville Reservoir RMP