



FIG. 14.—Plankton dominated by the pelagic shrimp *Meganyctiphanes norvegica* and by the glassworms *Eukrohnia hamata* and *Sagitta elegans*, with *Calanus* and other copepods. Northeast part of basin, March 23, 1920 (station 20081), haul from 140-0 meters.  $\times 1.25$

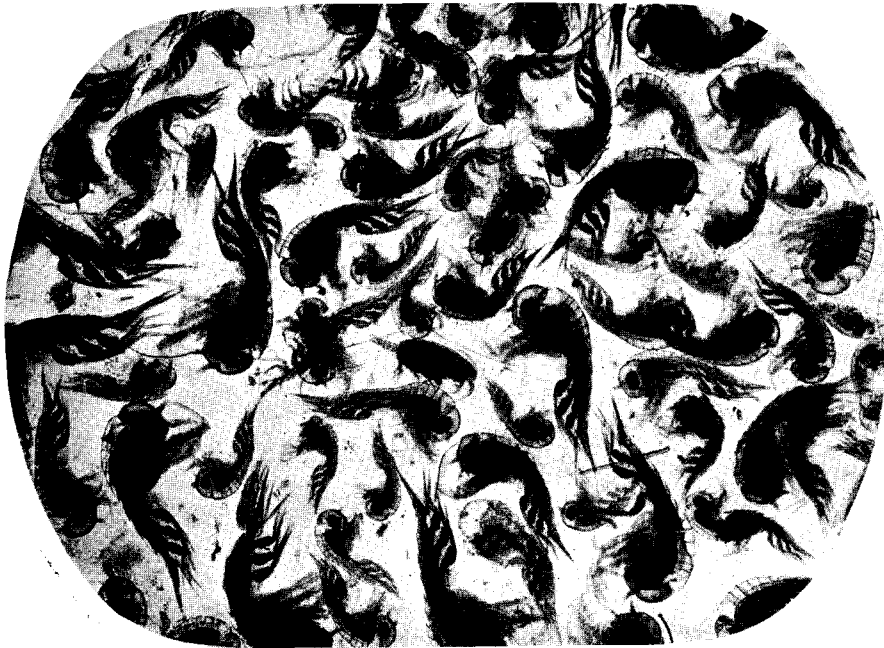


FIG. 15.—Plankton dominated by juvenile amphipods (*Euthemisto*). Southern slope of Georges Bank, July 21, 1914 (station 10219), surface haul.  $\times 9$