



WHAT FORMS ARE REQUIRED FOR LIMITED RECIPIENTS?

Reclamation Reform Act of 1982 (RRA)

The RRA and the Acreage Limitation Rules and Regulations (43 CFR part 426) require landholders (direct or indirect landowners or lessees) to complete Bureau of Reclamation (Reclamation) forms for each water year the landholder receives irrigation water from a Reclamation project. Such forms **must** be filed with the district **before** deliveries commence in any given year.

- ☞ The westwide RRA forms submittal threshold for **all limited recipients is 40 acres**. For information on RRA forms submittal thresholds for qualified and prior law recipients, see **Fact Sheet 1**.

If you represent a religious or charitable organization, trust, estate, or public entity, special RRA forms are required to be submitted. You should contact your district or local Reclamation office to obtain the proper RRA forms.

WHAT RRA FORMS ARE REQUIRED ANNUALLY FOR LIMITED RECIPIENTS?

1. Initially, an RRA Form 7-2181, "Certification of Entity's Landholdings," must be submitted for your entity whether your entity holds land directly or indirectly through another entity.
2. If the proper RRA forms were filed for your entity in a previous year and there have been **no changes** to your entity's landholding since that time, you only need to complete a Form **7-21VERIFY**, "Verification of Landholdings," as your entity's annual submittal. Please note that if you need to submit a new Form 7-21XS, "Designation of Excess Land," for your entity, you **may not** use a Form 7-21VERIFY to verify any RRA forms.
3. Landholders that hold land **ONLY INDIRECTLY** through legal entities must complete an initial standard RRA form as determined in the following flowchart. After this initial submittal, such indirect landholders are not required to file any RRA form for those years that the entities have no change to their landholdings and **all** the information included on the standard RRA form remains correct.

4. The flowchart found later in this Fact Sheet will help you determine which additional RRA forms, if any, you will need to complete for your entity.

LANDHOLDING CHANGES

If you have filed the proper RRA forms for your entity and your entity's landholding then changes **during the current irrigation season**, you will need to notify all districts in which your entity holds land within **30 calendar days** and submit a new standard RRA form within **60 calendar days** of the change. For example, if RRA Form 7-2181 was previously submitted for your entity and there are any changes, whether in acreage owned or leased, in attribution to part owners, etc., a new Form 7-2181 must be submitted for your entity. All part owners identified on the previously submitted Form 7-2181 who, as a result, have a change to the information provided previously on their standard RRA forms must also submit new standard RRA forms within **60 calendar days** of the change(s).

 **These 30-calendar-day and 60-calendar-day grace periods do not apply to a new landholder. A new landholder must submit appropriate RRA forms prior to receiving Reclamation irrigation water.**

If you have filed the proper RRA forms and your entity's landholding then changes **outside the irrigation season**, new standard RRA forms for your entity and any applicable part owners will need to be completed **prior to receiving** any irrigation water deliveries following such changes.


FLOWCHART

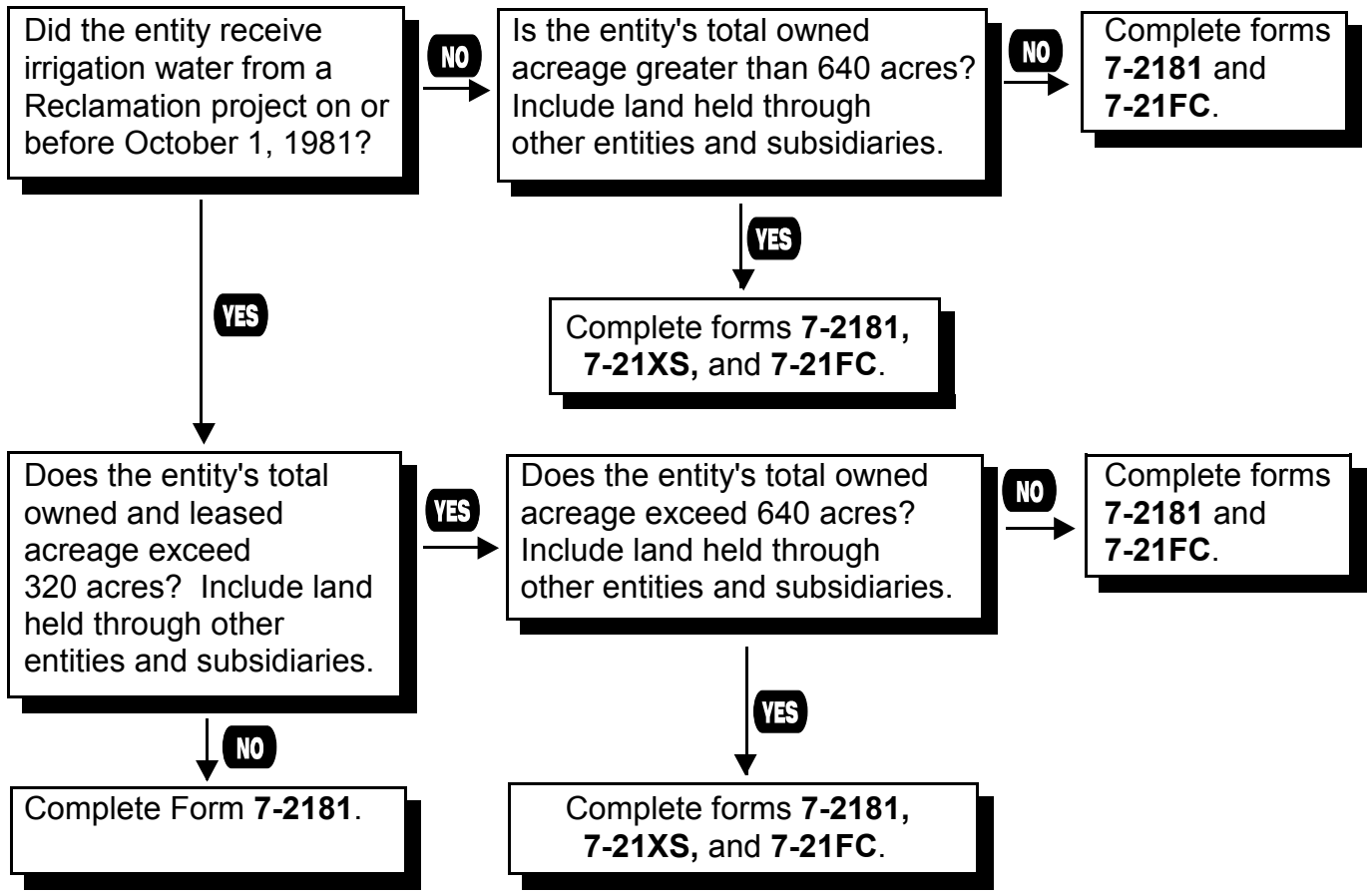
The titles for the RRA forms shown in the flowchart follow. To obtain copies of any of the RRA forms listed on this Fact Sheet, contact your district.

Form 7-2181--"CERTIFICATION OF ENTITY'S LANDHOLDINGS"

Form 7-21XS--"DESIGNATION OF EXCESS LAND"

Form 7-21FC--"SELECTION OF FULL-COST LAND"

 In working with this flowchart, please remember that **ALL land leased from public entities is treated as land owned by the landholder.**



NEED MORE INFORMATION?

For questions about:	See Fact Sheet:
Entitlements for limited recipients	6
When and where RRA forms must be filed	1
A complete list of RRA forms	1
Signature requirements for RRA forms	10
Landholding changes	11
Trusts and estates	12

If you have any other questions, contact your district or local Reclamation office.

Mission of the Bureau of Reclamation: To manage, develop, and protect water and related resources in an environmentally and economically sound manner in the interest of the American public.

The Department of the Interior has established a 24-hour toll-free telephone number (1-800-424-5081) for anyone wishing to report suspected violations of the Reclamation Reform Act of 1982 (RRA). Anyone reporting suspected violations will be protected under Federal privacy laws.

Distributed by the Bureau of Reclamation, United States Department of the Interior.