

EXPLANATION OF PLATE XXI.

- FIGURE 106.—*Pleurotoma bicarinatum*, (p. 638;) natural size.
107.—*Bela plicata*, (p. 637;) natural size.
108.—*Bela harpularia*, (p. 636;) natural size.
109.—*Anachis similis*, (p. 644;) natural size.
110.—*Astyris lunata*, (p. 645;) enlarged.
111.—*Astyris zonalis*, (p. 645;) enlarged.
112.—*Tritia trivittata*, (p. 641;) natural size.
113.—*Ilyanassa obsoleta*, (p. 641;) natural size.
114.—*Nassa vibex*, (p. 640;) natural size.
115.—*Neptunea pygmæa*, (p. 639;) natural size.
116.—*Urosalpinx cinerea*, (p. 641;) natural size.
117.—*Eupleura caudata*, (p. 642;) natural size.
118.—*Purpura lapillus*, (p. 642;) natural size.
119.—The same; banded variety.
120.—The same; egg-capsules, enlarged one-third.
121.—*Buccinum undatum*, (p. 638;) natural size.
122.—*Scalaria multistriata*, (p. 660;) enlarged.
123.—*Scalaria lineata*, (p. 660;) enlarged.

(Figure 120 was drawn from nature by J. H. Emerton; the rest are from Binney's Gould, drawn by E. S. Morse.)

Fig. 107.



Fig. 106.



Fig. 109.



Fig. 111.



Fig. 110.

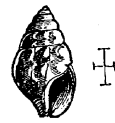


Fig. 108.



Fig. 112.



Fig. 114.



Fig. 113.



Fig. 118.

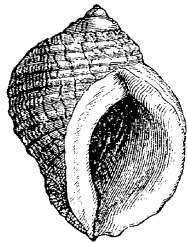
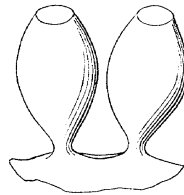


Fig. 119.



Fig. 120.



No. 785

Fig. 115.

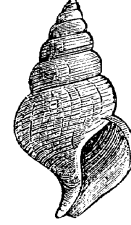


Fig. 117.



Fig. 121.

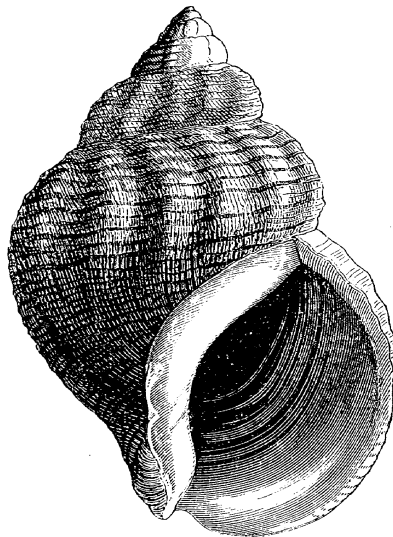


Fig. 122.



Fig. 116.

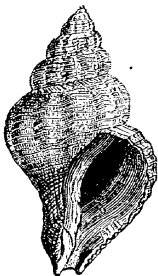


Fig. 123.



EXPLANATION OF PLATE XXII.

FIGURE 124.—Fulgur carica, (p. 640 ;) natural size.
(From Binney's Gould, drawn by E. S. Morse.)

Fig. 124.



EXPLANATION OF PLATE XXIII.

- FIGURE 125.—*Crucibulum striatum*, (p. 651;) natural size.
126.—The same; side view.
127.—*Crepidula plana*, (p. 650;) natural size.
128.—*C. convexa*, (p. 650;) natural size.
129.—*C. fornicata*, (p. 649;) natural size.
129*a*.—The same; young specimen.
130.—*Neverita duplicata*, (p. 646;) natural size.
131.—*Lunatia immaculata*, (p. 646;) natural size.
132.—*Natica pusilla*, (p. 647;) slightly enlarged.
133.—*Lunatia heros*, (p. 646;) natural size.
134.—The same; with the animal extended, as in crawling; dorsal view.
135.—The same, variety *triseriata*, (p. 354;) young, natural size.
136.—The same variety; natural size, lower side.

(From Binney's Gould, drawn by E. S. Morse.)

Fig. 125.



Fig. 127.

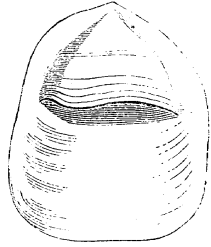


Fig. 128.



Fig. 129.

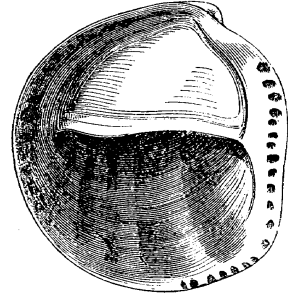


Fig. 126.



Fig. 129a.



Fig. 130.

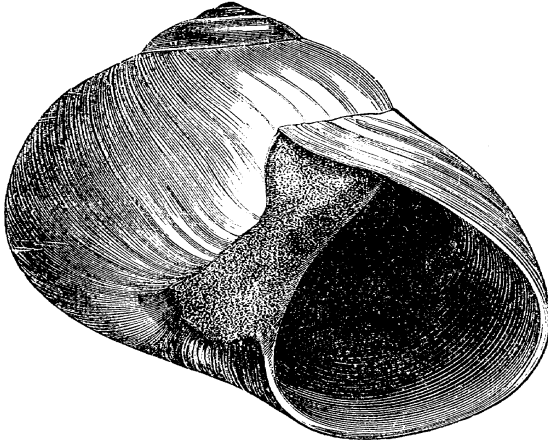


Fig. 131.



Fig. 132.



Fig. 135. Fig. 136.

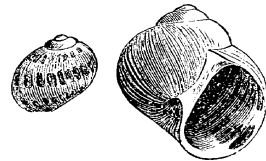
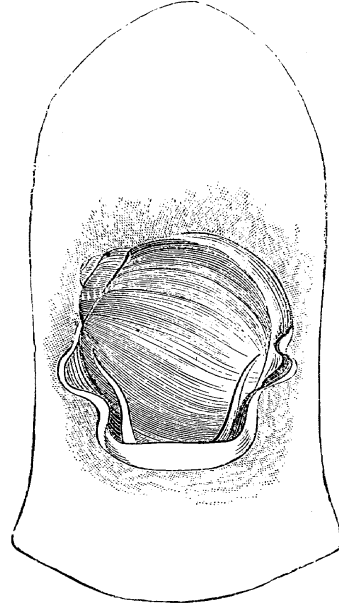


Fig. 133.



Fig. 134.



EXPLANATION OF PLATE XXIV.

- FIGURE 137.—*Littorina rudis*, (p. 651;) natural size.
138.—*Littorina palliata*, (p. 652;) natural size.
139.—*Lacuna vineta*, (p. 652;) enlarged.
140.—*Littorinella minuta*, (p. 653;) enlarged.
141.—*Rissoa aculeus*, (p. 654;) enlarged.
142.—*Skenea planorbis*, (p. 655;) enlarged.
143.—*Odostomia producta*, (p. 656;) enlarged.
144.—*O. fusca*, (p. 656;) enlarged.
145.—*O. trifida*, (p. 656;) enlarged.
146.—*O. trifida*, var., (p. 656;) enlarged.
147.—*O. impressa*, (p. 656;) enlarged.
148.—*O. seminuda*, (p. 657;) enlarged.
149.—*Eulima oleacea*, (p. 655;) natural size.
150.—*Cerithiopsis terebralis*, (p. 648;) enlarged.
151.—*C. Emersonii*, (p. 648;) enlarged.
152.—*Triforis nigrocinctus*, (p. 648;) enlarged.
153.—*Cerithiopsis Greenii*, (p. 647;) enlarged.
154.—*Bittium nigrum*, (p. 648;) enlarged.
155.—*Turbonilla elegans*, (p. 657;) much enlarged.
156.—*Margarita obscura*, (p. 661;) natural size.
157.—*Vermetus radricula*, (p. 649;) natural size.
158.—*Cæcum pulchellum*, (p. 649;) natural size and enlarged.
159.—*Acmaea testudinalis*, (p. 661;) natural size.
159*a*.—The same; lower side,
159*b*.—The same, variety *alveus*; natural size.

(Figure 155 was drawn from nature, by A. E. Verrill; the others are from Binney's Gould, mostly drawn by E. S. Morse.)

Fig. 137.



Fig. 138.



Fig. 139.



Fig. 140.



Fig. 141.



Fig. 142.

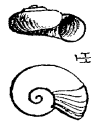


Fig. 143.

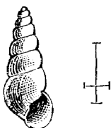


Fig. 144.



Fig. 145.



Fig. 146.



Fig. 147.



Fig. 148.



Fig. 149.



Fig. 150.

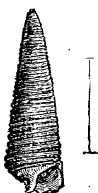


Fig. 151.

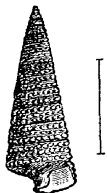


Fig. 152.



Fig. 153.



Fig. 154.



Fig. 155.



Fig. 156.



Fig. 157.

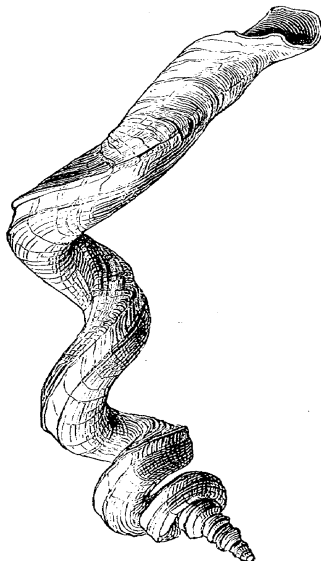


Fig. 158.

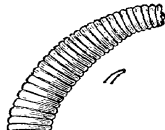


Fig. 159.

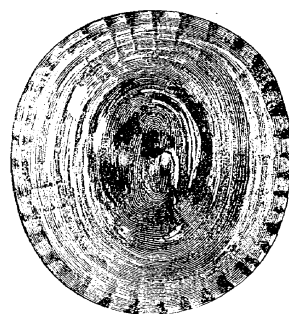
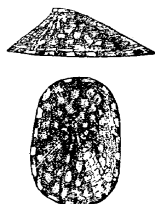


Fig. 159b.



EXPLANATION OF PLATE XXV.

- FIGURE 160.—*Utriculus canaliculatus*, (p. 663;) enlarged.
161.—*Bulla solitaria*, (p. 662;) natural size.
162.—*Amphisphyræ debilis*, (p. 663;) enlarged.
163.—*Cylichna alba*, (p. 664;) natural size.
164.—*Cylichna oryza*, (p. 664;) enlarged.
165.—*Actæon puncto-striata*, (p. 664;) enlarged.
166.—*Trachydermon ruber*, (p. 662;) natural size.
167.—*Chætopleura apiculata*, (p. 661;) natural size.
168.—*Alexia myosotis*, (p. 662;) natural size.
169.—*Melampus bidentatus*, (p. 662;) natural size.
169*a*.—The same; banded variety, (p. 662;) natural size.
170.—*Doto coronata*, (p. 665;) *a*, dorsal view, enlarged; *b*, head, from above; *c*, one of the branchiæ.
171.—*Elysiella catulus*, (p. 668;) enlarged three diameters.
172.—*Elysia chlorotica*, (p. 667;) enlarged two diameters.
173.—*Doridella obscura*, (p. 664;) *a*, dorsal view; *b*, ventral view, enlarged.
174.—*Montagua pilata*, (p. 666;) natural size.
175.—*Hermæa cruciata*, (p. 667;) enlarged.
176.—*Doris bifida*, (p. 664;) enlarged three diameters.
177.—*Cavolina tridentata*, (p. 669;) natural size.
178.—*Styliola vitrea*, (p. 668;) enlarged three diameters.

(Figures 171, 172, 173, 174, 178 were drawn from nature, by A. E. Verrill; 169*a*, 170 by E. S. Morse; 175 by A. Agassiz; 176, by J. H. Emerton; 177 was copied from Cuvier, (last ill. ed.). The rest are from Binney's Gould, mostly by E. S. Morse.)

Fig. 160.



Fig. 161.



Fig. 162.



Fig. 163.



Fig. 164.



Fig. 165.



Fig. 166.



Fig. 170.

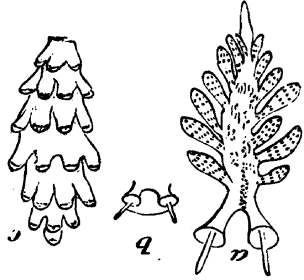


Fig. 168.



Fig. 169.



Fig. 169a.



Fig. 167.



Fig. 177.

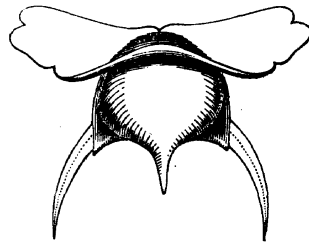


Fig. 178.

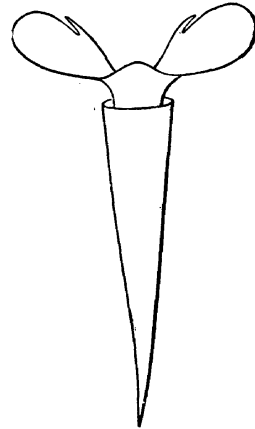


Fig. 172.



Fig. 171.

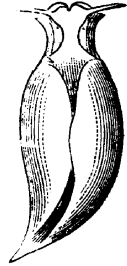


Fig. 173.

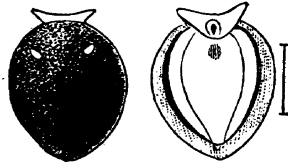
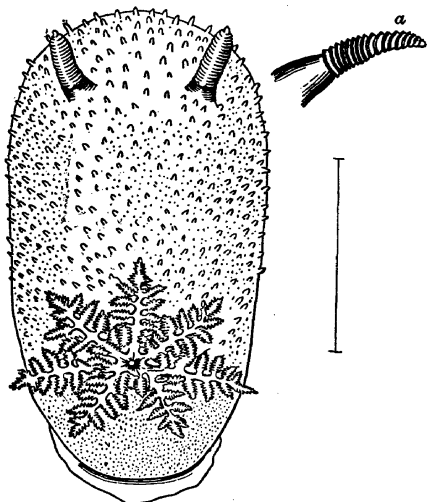


Fig. 176.

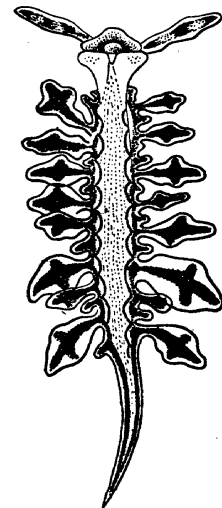


No. 766

Fig. 174.



Fig. 175.

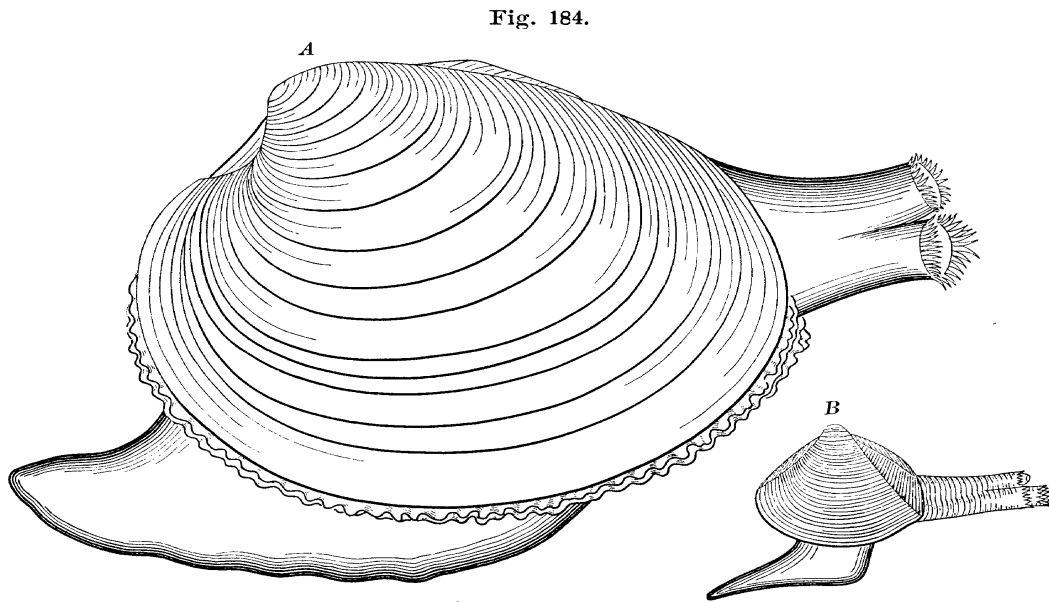
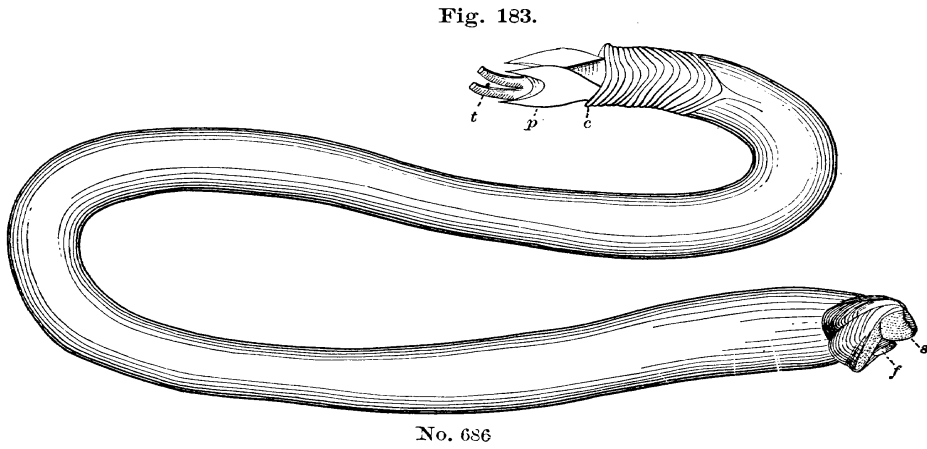
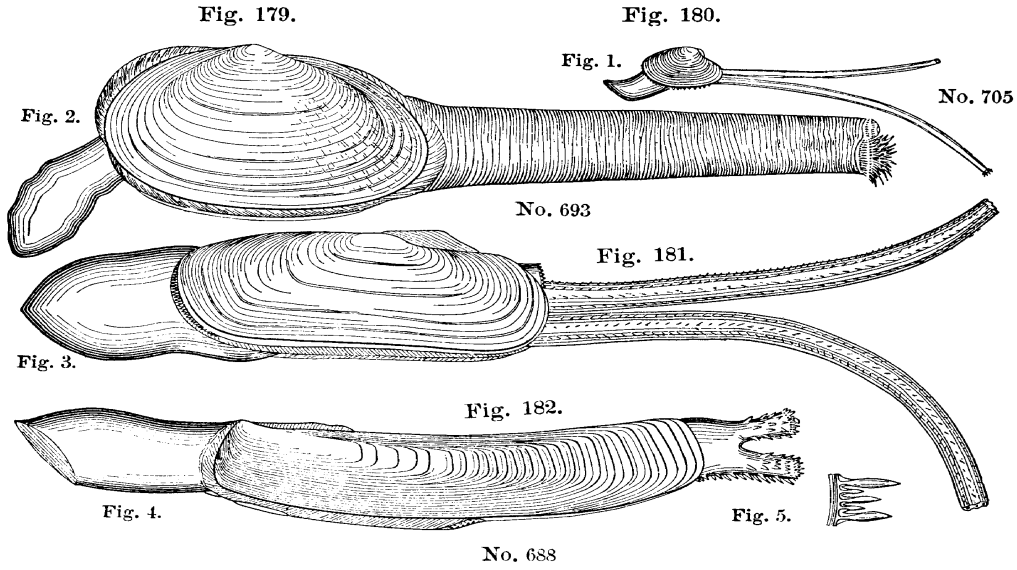


No. 770

EXPLANATION OF PLATE XXVI.

- FIGURE 179.—*Mya arenaria*, (p. 672;) with animal in extension, reduced to one-half the natural size.
- 180.—*Angulus tener*, (p. 677;) animal reduced one-half.
- 181.—*Tagelus gibbus*, (p. 675;) with animal, the siphons not fully extended, one-half natural size.
- 182.—*Ensatella Americana*, (p. 674;) with animal extended, one-half natural size. The figure at the right shows some of the terminal papillæ enlarged.
- 183.—*Teredo navalis*, (p. 669;) enlarged two diameters.
- 184, A.—*Venus mercenaria*, (p. 681;) natural size.
- 184, B.—*Mulinia lateralis*, (p. 680;) natural size.

(The figures were all drawn from nature, by A. E. Verrill.)



EXPLANATION OF PLATE XXVII.

- FIGURE 186.—*Teredo navalis*, (p. 669;) shell and pallets.
187.—*Teredo Thomsoni*, (p. 670;) shell and pallets.
188.—*Teredo megotara*, (p. 670;) shell and pallets.
189.—*Xylotrya fimbriata*, (p. 670;) shell and pallets.
190.—*Gastranella tumida*, (p. 678;) shell, enlarged six diameters.
191.—*Corbula contracta*, (p. 672;) natural size.
192.—*Saxicava arctica*, (p. 671;) natural size.
193.—*Clidiophora trilineata*, (p. 673;) natural size, with animal.
194.—*Lyonsia hyalina*, (p. 672;) natural size.
195.—*Thracia truncata*, (p. 674;) natural size.
196.—*Thracia myopsis*, (p. 673;) natural size.
197.—*Periploma papyracea*, (p. 673;) natural size.
198.—*Cochlodesma Leanum*, (p. 673;) natural size.
199.—*Petricola pholadiformis*, (p. 680;) natural size.
200.—*Pholas truncata*, (p. 670;) natural size.

(Figure 190 was drawn by A. E. Verrill: all the rest are from Binney's Gould, mostly drawn by E. S. Morse.)

Fig. 186.

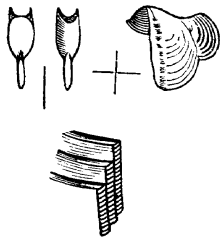


Fig. 187.

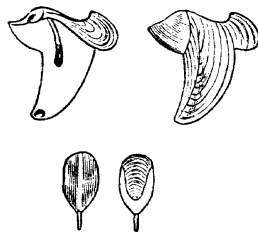


Fig. 189.

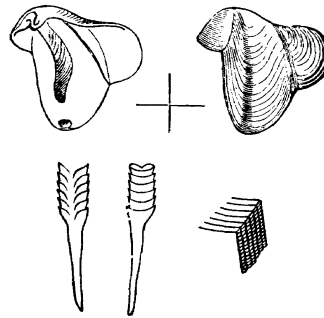


Fig. 188.

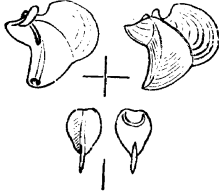


Fig. 190.



Fig. 192.



Fig. 191.



Fig. 195.



Fig. 193.

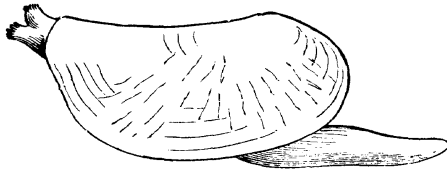


Fig. 194.



Fig. 196.

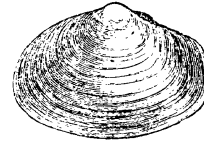


Fig. 199.

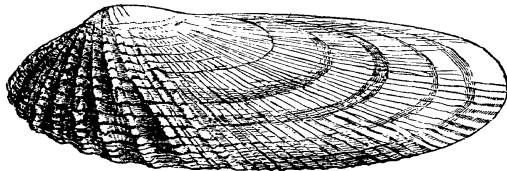


Fig. 197.

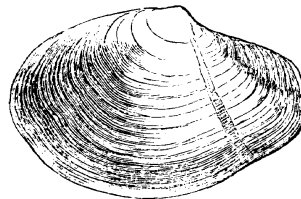


Fig. 200.

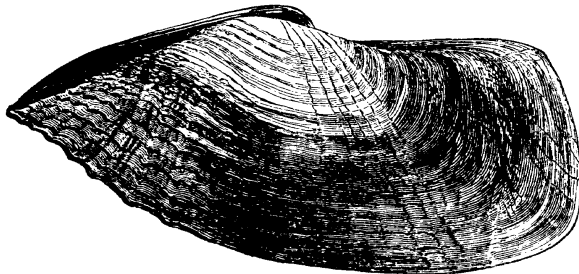
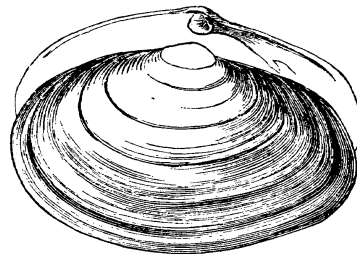


Fig. 198.



EXPLANATION OF PLATE XXVIII.

FIGURE 201.—*Cyprina Islandica*, (p. 683;) natural size.

202.—*Mactra solidissima*, (p. 680;) natural size.

(The figures are both from Binney's Gould, drawn by E. S. Morse.)

Fig. 201.

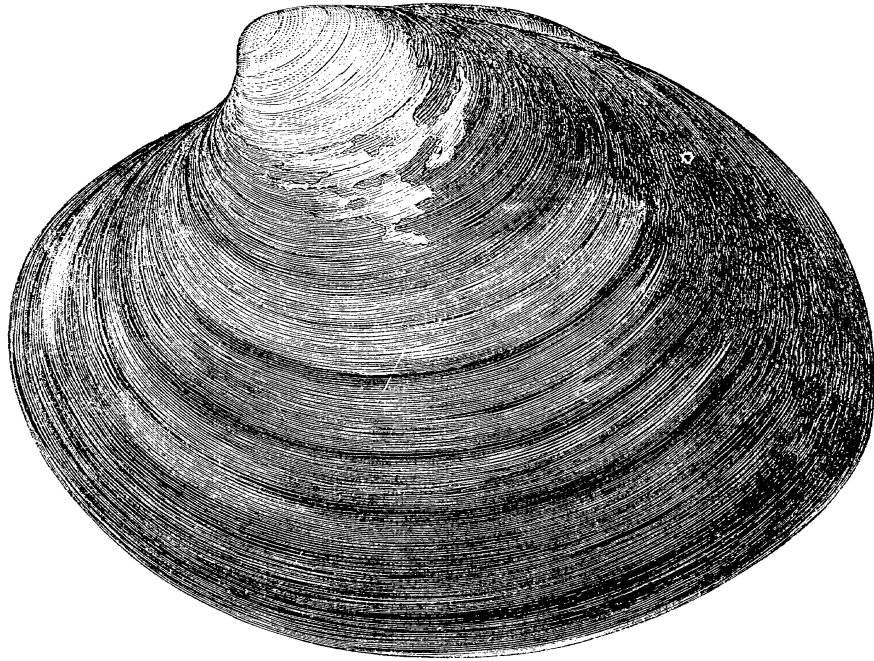
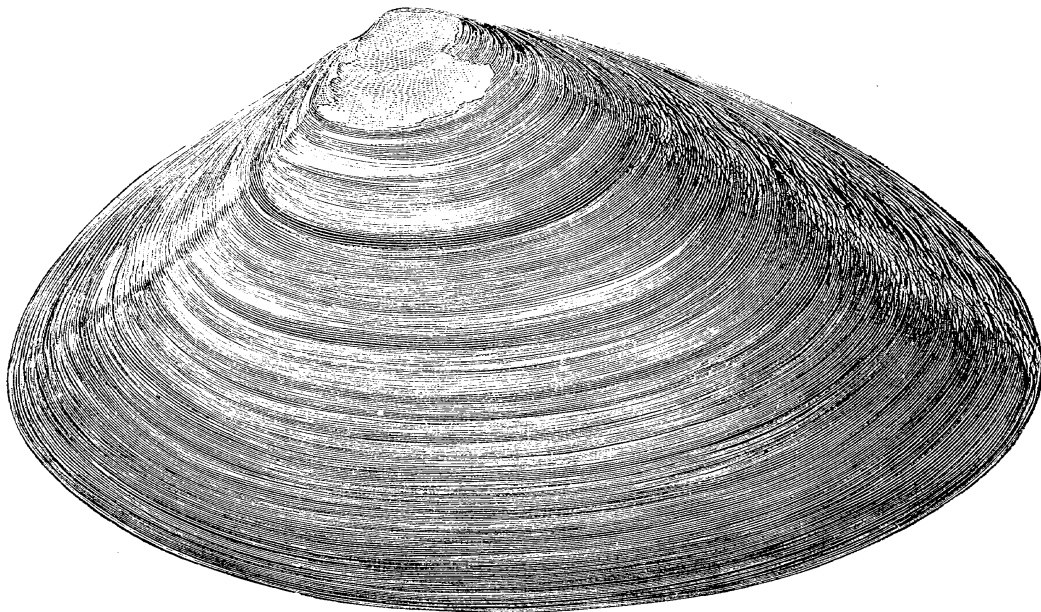


Fig. 202



EXPLANATION OF PLATE XXIX.

- FIGURE 203.—*Astarte undata*, (p. 684;) somewhat reduced.
204.—*Astarte castanea*, (p. 685;) natural size.
205.—*Astarte quadraus*, (p. 685;) natural size.
206.—*Gouldia mactracea*, (p. 685;) natural size.
207.—The same, inside of one valve, enlarged.
208.—*Lævicardium Mortoni*, (p. 683;) natural size, with animal.
209.—*Cardium pinnulatum*, (p. 683;) natural size.
210.—*Solenomya velum*, (p. 688;) natural size.
211.—*Cyclas dentata*, (p. 686;) natural size.
212.—*Lucina filosa*, (p. 686;) natural size.
213.—*Cryptodon Gouldii*, (p. 686;) enlarged two diameters.
214.—*Cryptodon obesus*, (p. 687;) enlarged three diameters.
215.—*Cyclocardia Novangliæ*, (p. 684;) natural size.
216.—*Cyclocardia borealis*, (p. 683;) natural size.

(Figures 203, 207, 214 were drawn by A. F. Verrill; 215 by E. S. Morse; the rest from Binney's Gould, and mostly drawn by E. S. Morse.)

Fig. 203.

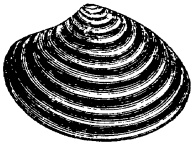


Fig. 208.

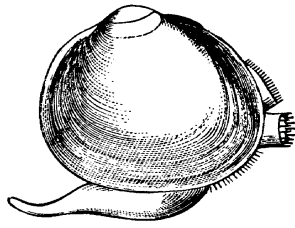


Fig. 210.



Fig. 204.

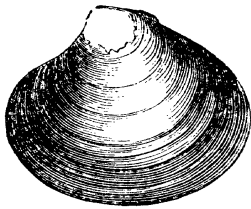


Fig. 205.



Fig. 209.



Fig. 211.

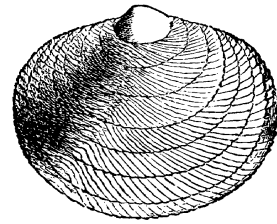


Fig. 207.

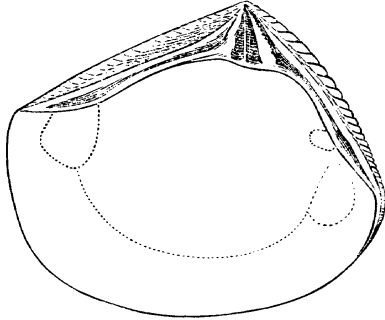


Fig. 206.



Fig. 212.

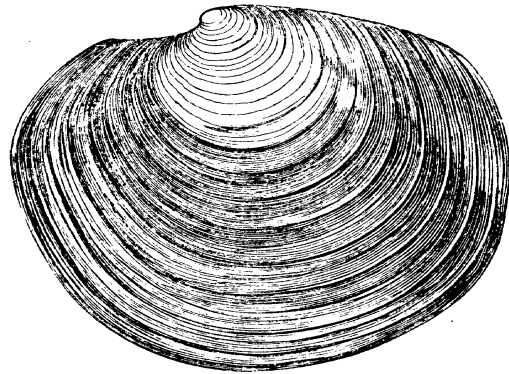


Fig. 215.

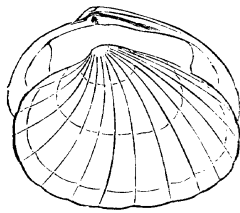


Fig. 213.



Fig. 214.

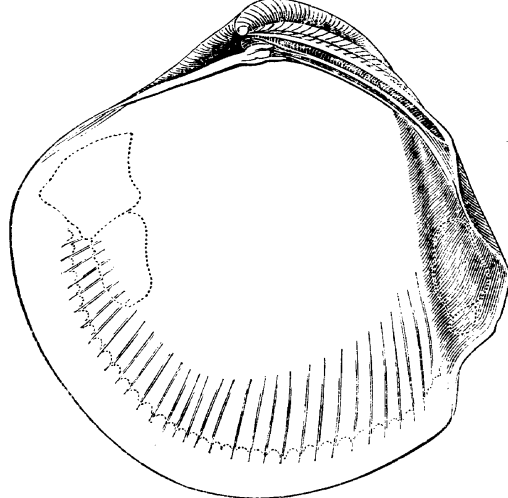


Fig. 216.

