

**NORVIR®**  
**(ritonavir capsules) Soft Gelatin**  
**(ritonavir oral solution)**

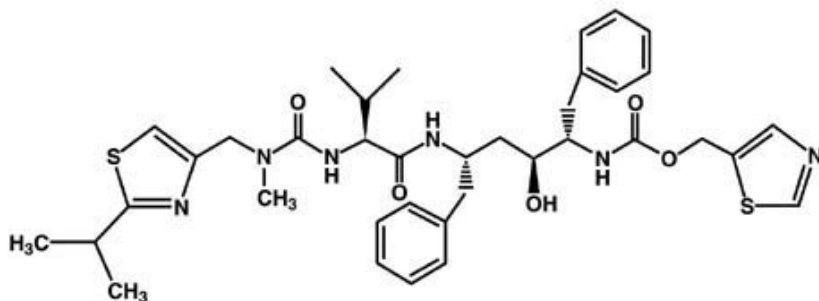
**WARNING**

CO-ADMINISTRATION OF NORVIR WITH CERTAIN NONSEDATING ANTIHISTAMINES, SEDATIVE HYPNOTICS, ANTIARRHYTHMICS, OR ERGOT ALKALOID PREPARATIONS MAY RESULT IN POTENTIALLY SERIOUS AND/OR LIFE-THREATENING ADVERSE EVENTS DUE TO POSSIBLE EFFECTS OF NORVIR ON THE HEPATIC METABOLISM OF CERTAIN DRUGS. SEE **CONTRAINDICATIONS AND PRECAUTIONS** SECTIONS.

**DESCRIPTION**

NORVIR (ritonavir) is an inhibitor of HIV protease with activity against the Human Immunodeficiency Virus (HIV).

Ritonavir is chemically designated as 10-Hydroxy-2-methyl-5-(1-methylethyl)-1- [2-(1-methylethyl)-4-thiazolyl]-3,6-dioxo-8,11-bis(phenylmethyl)-2,4,7,12- tetraazatridecan-13-oic acid, 5-thiazolylmethyl ester, [5S-(5R\*,8R\*,10R\*,11R\*)]. Its molecular formula is  $C_{37}H_{48}N_6O_5S_2$ , and its molecular weight is 720.95. Ritonavir has the following structural formula:



Ritonavir is a white-to-light-tan powder. Ritonavir has a bitter metallic taste. It is freely soluble in methanol and ethanol, soluble in isopropanol and practically insoluble in water.

NORVIR soft gelatin capsules are available for oral administration in a strength of 100 mg ritonavir with the following inactive ingredients: Butylated hydroxytoluene, ethanol, gelatin, iron oxide, oleic acid, polyoxyl 35 castor oil, and titanium dioxide.

NORVIR oral solution is available for oral administration as 80 mg/mL of ritonavir in a peppermint and caramel flavored vehicle. Each 8-ounce bottle contains 19.2 grams of ritonavir. NORVIR oral solution also contains ethanol, water, polyoxyl 35 castor oil, propylene glycol, anhydrous citric acid to adjust pH, saccharin sodium, peppermint oil, creamy caramel flavoring, and FD&C Yellow No. 6.

## CLINICAL PHARMACOLOGY

### Microbiology

#### Mechanism of Action

Ritonavir is a peptidomimetic inhibitor of both the HIV-1 and HIV-2 proteases. Inhibition of HIV protease renders the enzyme incapable of processing the *gag-pol* polyprotein precursor which leads to production of non-infectious immature HIV particles.

#### Antiviral Activity *In Vitro*

The activity of ritonavir was assessed *in vitro* in acutely infected lymphoblastoid cell lines and in peripheral blood lymphocytes. The concentration of drug that inhibits 50% ( $EC_{50}$ ) of viral replication ranged from 3.8 to 153 nM depending upon the HIV-1 isolate and the cells employed. The average  $EC_{50}$  for low passage clinical isolates was 22 nM (n = 13). In MT<sub>4</sub> cells, ritonavir demonstrated additive effects against HIV-1 in combination with either zidovudine (ZDV) or didanosine (ddI). Studies which measured cytotoxicity of ritonavir on several cell lines showed that > 20  $\mu$ M was required to inhibit cellular growth by 50% resulting in an *in vitro* therapeutic index of at least 1000.

#### Resistance

HIV-1 isolates with reduced susceptibility to ritonavir have been selected *in vitro*.

Genotypic analysis of these isolates showed mutations in the HIV protease gene at amino acid positions 84 (Ile to Val), 82 (Val to Phe), 71 (Ala to Val), and 46 (Met to Ile).

Phenotypic (n = 18) and genotypic (n = 44) changes in HIV isolates from selected patients treated with ritonavir were monitored in phase I/II trials over a period of 3 to 32 weeks.

Mutations associated with the HIV viral protease in isolates obtained from 41 patients appeared to occur in a stepwise and ordered fashion; in sequence, these mutations were position 82 (Val to Ala/Phe), 54 (Ile to Val), 71 (Ala to Val/Thr), and 36 (Ile to Leu), followed by combinations of mutations at an additional 5 specific amino acid positions. Of 18 patients for whom both phenotypic and genotypic analysis were performed on free virus isolated from plasma, 12 showed reduced susceptibility to ritonavir *in vitro*. All 18 patients possessed one or more mutations in the viral protease gene. The 82 mutation appeared to be necessary but not sufficient to confer phenotypic resistance. Phenotypic resistance was defined as a  $\geq 5$ -fold decrease in viral sensitivity *in vitro* from baseline. The clinical relevance of phenotypic and genotypic changes associated with ritonavir therapy has not been established.

### Cross-Resistance to Other Antiretrovirals

Among protease inhibitors variable cross-resistance has been recognized. Serial HIV isolates obtained from six patients during ritonavir therapy showed a decrease in ritonavir susceptibility *in vitro* but did not demonstrate a concordant decrease in susceptibility to saquinavir *in vitro* when compared to matched baseline isolates. However, isolates from two of these patients demonstrated decreased susceptibility to indinavir *in vitro* (8-fold). Isolates from 5 patients were also tested for cross-resistance to amprenavir and nelfinavir; isolates from 2 patients had a decrease in susceptibility to nelfinavir (12- to 14-fold), and none to amprenavir. Cross-resistance between ritonavir and reverse transcriptase inhibitors is unlikely because of the different enzyme targets involved. One ZDV-resistant HIV isolate tested *in vitro* retained full susceptibility to ritonavir.

### Pharmacokinetics

The pharmacokinetics of ritonavir have been studied in healthy volunteers and HIV-infected patients ( $CD_4 \geq 50$  cells/ $\mu$ L). See Table 1 for ritonavir pharmacokinetic characteristics.

#### Absorption

The absolute bioavailability of ritonavir has not been determined. After a 600 mg dose of oral solution, peak concentrations of ritonavir were achieved approximately 2 hours and 4 hours after dosing under fasting and non-fasting (514 KCal; 9% fat, 12% protein, and 79% carbohydrate) conditions, respectively.

## Effect of Food on Oral Absorption

When the oral solution was given under non-fasting conditions, peak ritonavir concentrations decreased 23% and the extent of absorption decreased 7% relative to fasting conditions. Dilution of the oral solution, within one hour of administration, with 240 mL of chocolate milk, Advera® or Ensure® did not significantly affect the extent and rate of ritonavir absorption. After a single 600 mg dose under non-fasting conditions, in two separate studies, the soft gelatin capsule (n = 57) and oral solution (n = 18) formulations yielded mean  $\pm$  SD areas under the plasma concentration-time curve (AUCs) of  $121.7 \pm 53.8$  and  $129.0 \pm 39.3$   $\mu\text{g}\cdot\text{h}/\text{mL}$ , respectively. Relative to fasting conditions, the extent of absorption of ritonavir from the soft gelatin capsule formulation was 13% higher when administered with a meal (615 KCal; 14.5% fat, 9% protein, and 76% carbohydrate).

## Metabolism

Nearly all of the plasma radioactivity after a single oral 600 mg dose of  $^{14}\text{C}$ -ritonavir oral solution (n = 5) was attributed to unchanged ritonavir. Five ritonavir metabolites have been identified in human urine and feces. The isopropylthiazole oxidation metabolite (M-2) is the major metabolite and has antiviral activity similar to that of parent drug; however, the concentrations of this metabolite in plasma are low. *In vitro* studies utilizing human liver microsomes have demonstrated that cytochrome P450 3A (CYP3A) is the major isoform involved in ritonavir metabolism, although CYP2D6 also contributes to the formation of M-2.

## Elimination

In a study of five subjects receiving a 600 mg dose of  $^{14}\text{C}$ -ritonavir oral solution,  $11.3 \pm 2.8\%$  of the dose was excreted into the urine, with  $3.5 \pm 1.8\%$  of the dose excreted as unchanged parent drug. In that study,  $86.4 \pm 2.9\%$  of the dose was excreted in the feces with  $33.8 \pm 10.8\%$  of the dose excreted as unchanged parent drug. Upon multiple dosing, ritonavir accumulation is less than predicted from a single dose possibly due to a time and dose-related increase in clearance.

**Table 1. Ritonavir Pharmacokinetic Characteristics**

Parameter	n	Values (Mean $\pm$ SD)
$C_{\text{max}}$ SS <sup>†</sup>	10	$11.2 \pm 3.6$ $\mu\text{g}/\text{mL}$
$C_{\text{trough}}$ SS <sup>†</sup>	10	$3.7 \pm 2.6$ $\mu\text{g}/\text{mL}$

$V_{\beta}/F^{\ddagger}$	91	0.41 ± 0.25 L/kg
$t_{1/2}$		3 - 5 h
CL/F SS <sup>†</sup>	10	8.8 ± 3.2 L/h
CL/F <sup>‡</sup>	91	4.6 ± 1.6 L/h
CLR	62	< 0.1 L/h
RBC/Plasma Ratio		0.14
Percent Bound*		98 to 99%

† SS = steady state; patients taking ritonavir 600 mg q12h.

‡ Single ritonavir 600 mg dose.

\* Primarily bound to human serum albumin and alpha-1 acid glycoprotein over the ritonavir concentration range of 0.01 to 30 µg/mL.

## Special Populations

### *Gender, Race and Age*

No age-related pharmacokinetic differences have been observed in adult patients (18 to 63 years). Ritonavir pharmacokinetics have not been studied in older patients.

A study of ritonavir pharmacokinetics in healthy males and females showed no statistically significant differences in the pharmacokinetics of ritonavir. Pharmacokinetic differences due to race have not been identified.

### *Pediatric Patients*

Steady-state pharmacokinetics were evaluated in 37 HIV-infected patients ages 2 to 14 years receiving doses ranging from 250 mg/m<sup>2</sup> twice-daily to 400 mg/m<sup>2</sup> twice-daily in PACTG Study 310, and in 41 HIV-infected patients ages 1 month to 2 years at doses of 350 and 450 mg/m<sup>2</sup> twice-daily in PACTG Study 345. Across dose groups, ritonavir steady-state oral clearance (CL/F/m<sup>2</sup>) was approximately 1.5 to 1.7 times faster in pediatric patients than in adult subjects. Ritonavir concentrations obtained after 350 to 400 mg/m<sup>2</sup> twice-daily in pediatric patients > 2 years were comparable to those obtained in adults receiving 600 mg (approximately 330 mg/m<sup>2</sup>) twice-daily. The following observations were seen regarding ritonavir concentrations after administration with 350 or 450 mg/m<sup>2</sup> twice-daily in children < 2 years of age. Higher ritonavir exposures were not evident with 450 mg/m<sup>2</sup> twice-daily compared to the 350 mg/m<sup>2</sup> twice-daily. Ritonavir trough concentrations were somewhat lower than those obtained in adults receiving 600

mg twice-daily. The area under the ritonavir plasma concentration-time curve and trough concentrations obtained after administration with 350 or 450 mg/m<sup>2</sup> twice-daily in children < 2 years were approximately 16% and 60% lower, respectively, than that obtained in adults receiving 600 mg twice-daily.

### *Renal Insufficiency*

Ritonavir pharmacokinetics have not been studied in patients with renal insufficiency, however, since renal clearance is negligible, a decrease in total body clearance is not expected in patients with renal insufficiency.

### *Hepatic Insufficiency*

Dose-normalized steady-state ritonavir concentrations in subjects with mild hepatic insufficiency (400 mg twice-daily, n = 6) were similar to those in control subjects dosed with 500 mg twice-daily. Dose-normalized steady-state ritonavir exposures in subjects with moderate hepatic impairment (400 mg twice-daily, n = 6) were about 40% lower than those in subjects with normal hepatic function (500 mg twice-daily, n = 6). Protein binding of ritonavir was not statistically significantly affected by mild or moderately impaired hepatic function. No dose adjustment is recommended in patients with mild or moderate hepatic impairment. However, health care providers should be aware of the potential for lower ritonavir concentrations in patients with moderate hepatic impairment and should monitor patient response carefully. Ritonavir has not been studied in patients with severe hepatic impairment.

### *Drug-Drug Interactions*

See also **CONTRAINDICATIONS, WARNINGS, and PRECAUTIONS - Drug Interactions** .

Table 2 and Table 3 summarize the effects on AUC and C<sub>max</sub>, with 95% confidence intervals (95% CI), of co-administration of ritonavir with a variety of drugs. For information about clinical recommendations see **PRECAUTIONS - Drug Interactions**.

**Table 2. Drug Interactions - Pharmacokinetic Parameters for Ritonavir in the Presence of the Co-administered Drug (See PRECAUTIONS - Table 6 for Recommended Alterations in Dose or Regimen)**

Co-administered Drug	Dose of Co-administered Drug (mg)	Dose of NORVIR (mg)	n	AUC % (95% CI)	C <sub>max</sub> (95% CI)	C <sub>min</sub> (95% CI)
Clarithromycin	500 q12h, 4 d	200 q8h, 4 d	22	↑ 12% (2, 23%)	↑ 15% (2, 28%)	↑ 14% (-3, 36%)

Didanosine	200 q12h, 4 d	600 q12h, 4 d	12	↔	↔	↔
Fluconazole	400 single dose, day 1; 200 daily, 4 d	200 q6h, 4 d	8	↑ 12% (5, 20%)	↑ 15% (7, 22%)	↑ 14% (0, 26%)
Fluoxetine	30 q12h, 8 d	600 single dose, 1 d	16	↑ 19% (7, 34%)	↔	ND
Ketoconazole	200 daily, 7 d	500 q12h, 10 d	12	↑ 18% (-3, 52%)	↑ 10% (-11, 36%)	ND
Rifampin	600 or 300 daily, 10 d	500 q12h, 20 d	7, 9*	↓ 35% (7, 55%)	↓ 25% (-5, 46%)	↓ 49% (-14, 91%)
Voriconazole	400 q12h, 1 d; then 200 q12h, 8 d	400 q12h, 9 d		↔	↔	ND
Zidovudine	200 q8h, 4 d	300 q6h, 4 d	10	↔	↔	↔

**Table 3. Drug Interactions - Pharmacokinetic Parameters for Co-administered Drug in the Presence of NORVIR (See PRECAUTIONS - Table 6 for Recommended Alterations in Dose or Regimen)**

Co-administered Drug	Dose of Co-administered Drug (mg)	Dose of NORVIR (mg)	n	AUC % (95% CI)	C <sub>max</sub> (95% CI)	C <sub>min</sub> (95% CI)
Alprazolam	1, single dose	500 q12h, 10 d	12	↓ 12% (-5,30%)	↓ 16% (5, 27%)	ND
Clarithromycin	500 q12h, 4 d	200 q8h, 4 d	22	↑ 77% (56, 103%)	↑ 31% (15, 51%)	↑ 2.8-fold (2.4, 3.3X)
14-OH clarithromycin metabolite				↓ 100%	↓ 99%	↓ 100%
Desipramine	100, single dose	500 q12h, 12 d	14	↑ 145% (103, 211%)	↑ 22% (12, 35%)	ND
2-OH desipramine metabolite				↓ 15% (3, 26%)	↓ 67% (62, 72%)	ND
Didanosine	200 q12h, 4 d	600 q12h, 4 d	12	↓ 13% (0, 23%)	↓ 16% (5, 26%)	↔
Ethinyl estradiol	50 µg single dose	500 q12h, 16 d	23	↓ 40% (31, 49%)	↓ 32% (24, 39%)	ND
Fluticasone propionate aqueous nasal spray	200 mcg qd, 7 d	100 mg q12h, 7 d	18	↑ approximately 350-fold <sup>5</sup>	↑ approximately 25-fold <sup>5</sup>	
Indinavir <sup>1</sup>	400 q12h, 15 d	400 q12h, 15 d	10			↑ 4-fold (2.8,6.8X)
Day 14				↑ 6% (-14, 29%)	↓ 51% (40, 61%)	
Day 15				↓ 7% (-22,28%)	↓ 62% (52, 70%)	↑ 4-fold (2.5,6.5X)

Ketoconazole	200 daily, 7 d	500 q12h, 10 d	12	↑ 3.4-fold (2.8, 4.3X)	↑ 55% (40, 72%)	ND
Meperidine	50 oral single dose	500 q12h, 10 d	8	↓ 62% (59, 65%)	↓ 59% (42, 72%)	ND
Normeperidine metabolite			6	↑ 47% (-24, 345%)	↑ 87% (42, 147%)	ND
Methadone <sup>2</sup>	5, single dose	500 q12h, 15 d	11	↓ 36% (16, 52%)	↓ 38% (28, 46%)	ND
Rifabutin 25- <i>O</i> -desacetyl rifabutin metabolite	150 daily, 16 d	500 q12h, 10 d	5,	↑ 4-fold (2.8, 6.1X)	↑ 2.5-fold (1.9, 3.4X)	↑ 6-fold (3.5, 18.3X)
			11*	↑ 38-fold (28, 56X)	↑ 16-fold (13, 20X)	↑ 181-fold (ND)
Sildenafil	100, single dose	500 BID, 8 d	28	↑ 11-fold	↑ 4-fold	ND
Sulfamethoxazole <sup>3</sup>	800, single dose	500 q12h, 12 d	15	↓ 20% (16, 23%)	↔	ND
Tadalafil	20 mg, single dose	200 mg q12h		↑ 124%	↔	ND
Theophylline	3 mg/kg q8h, 15 d	500 q12h, 10 d	13, 11*	↓ 43% (42, 45%)	↓ 32% (29, 34%)	↓ 57% (55,59%)
Trazodone	50 mg, single dose	200 mg q12h, 4 doses	10	↑ 2.4-fold	↑ 34%	
Trimethoprim <sup>3</sup>	160, single dose	500 q12h, 12 d	15	↑ 20% (3, 43%)	↔	ND
Vardenafil	5 mg	600 q12h		↑ 49-fold	↑ 13-fold	ND
Voriconazole	400 q12h, 1 d; then 200 q12h, 8 d	400 q12h, 9 d		↓ 82%	↓ 66%	
Warfarin S-Warfarin R-Warfarin	5, single dose	400 q12h, 12d	12	↑ 9% (-17, 44%) <sup>4</sup> ↓ 33% (-38, - 27%) <sup>4</sup>	↓ 9% (-16, - 2%) <sup>4</sup> ↔	ND ND
Zidovudine	200 q8h, 4 d	300 q6h, 4 d	9	↓ 25% (15, 34%)	↓ 27% (4, 45%)	ND

---



- 
- 1 Ritonavir and indinavir were co-administered for 15 days; Day 14 doses were administered after a 15%-fat breakfast (757 Kcal) and 9%-fat evening snack (236 Kcal), and Day 15 doses were administered after a 15%-fat breakfast (757 Kcal) and 32%-fat dinner (815 Kcal). Indinavir  $C_{min}$  was also increased 4-fold. Effects were assessed relative to an indinavir 800 mg q8h regimen under fasting conditions.
  - 2 Effects were assessed on a dose-normalized comparison to a methadone 20 mg single dose.
  - 3 Sulfamethoxazole and trimethoprim taken as single combination tablet.
  - 4 90% CI presented for R- and S-warfarin AUC and  $C_{max}$  ratios.
  - 5 This significant increase in plasma fluticasone propionate exposure resulted in a significant decrease (86%) in plasma cortisol AUC.
- ↑ Indicates increase.  
↓ Indicates decrease.  
↔ Indicates no change.
- \* Parallel group design; entries are subjects receiving combination and control regimens, respectively.

## INDICATIONS AND USAGE

NORVIR is indicated in combination with other antiretroviral agents for the treatment of HIV-infection. This indication is based on the results from a study in patients with advanced HIV disease that showed a reduction in both mortality and AIDS-defining clinical events for patients who received NORVIR either alone or in combination with nucleoside analogues. Median duration of follow-up in this study was 13.5 months.

### Description of Clinical Studies

The activity of NORVIR as monotherapy or in combination with nucleoside reverse transcriptase inhibitors has been evaluated in 1446 patients enrolled in two double-blind, randomized trials.

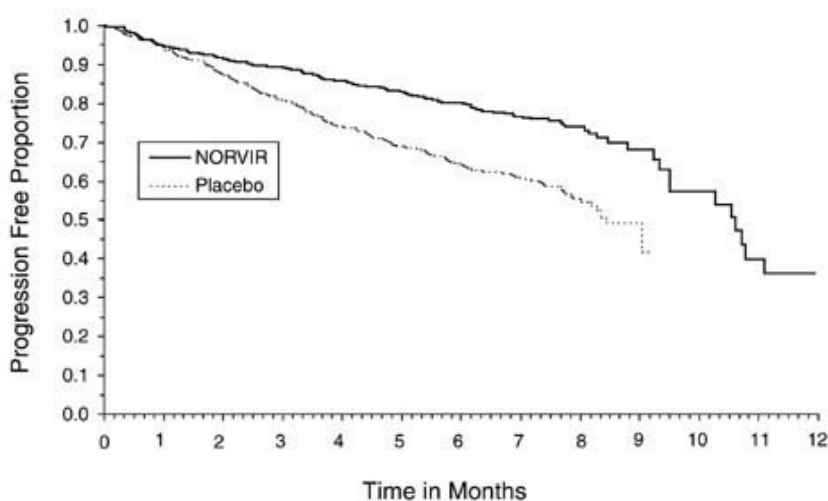
#### Advanced Patients with Prior Antiretroviral Therapy

Study 247 was a randomized, double-blind trial (with open-label follow-up) conducted in HIV-infected patients with at least nine months of prior antiretroviral therapy and baseline  $CD_4$  cell counts  $\leq 100$  cells/ $\mu$ L. NORVIR 600 mg twice-daily or placebo was added to each patient's baseline antiretroviral therapy regimen, which could have consisted of up to two approved antiretroviral agents. The study accrued 1090 patients, with mean baseline  $CD_4$  cell count at study entry of 32 cells/ $\mu$ L. After the clinical benefit of NORVIR therapy was demonstrated, all patients were eligible to switch to open-label NORVIR for the duration of the follow-up period. Median duration of double-blind therapy with NORVIR and placebo

was 6 months. The median duration of follow-up through the end of the open-label phase was 13.5 months for patients randomized to NORVIR and 14 months for patients randomized to placebo.

The cumulative incidence of clinical disease progression or death during the double-blind phase of Study 247 was 26% for patients initially randomized to NORVIR compared to 42% for patients initially randomized to placebo. This difference in rates was statistically significant (see Figure 1).

**Figure 1. Time to Disease Progression or Death During the Double-blind Phase of Study 247**



The cumulative mortality through the end of the open-label follow-up phase for patients enrolled in Study 247 was 18% for patients initially randomized to NORVIR compared to 26% for patients initially randomized to placebo. This difference in rates was statistically significant (see Figure 2). Since the analysis at the end of the open-label phase includes patients in the placebo arm who were switched from placebo to NORVIR therapy, the survival benefit of NORVIR cannot be precisely estimated.

Figure 2. Survival of Patients by Randomized Treatment Regimen in Study 247

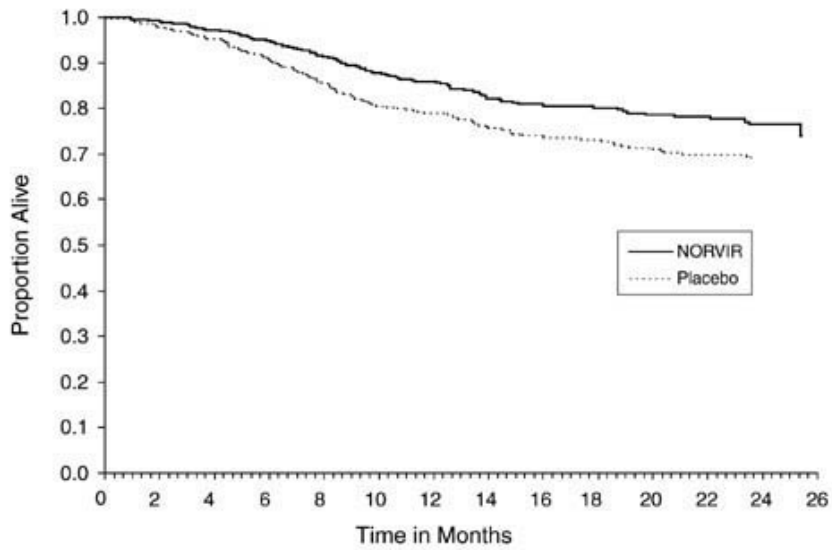


Figure 3 and Figure 4 summarize the mean change from baseline for CD<sub>4</sub> cell count and plasma HIV RNA (copies/mL), respectively, during the first 24 weeks for the double-blind phase of Study 247.

Figure 3. Mean Change from Baseline in CD<sub>4</sub> Cell Count (cells/ $\mu$ L) During the Double-blind Phase of Study 247

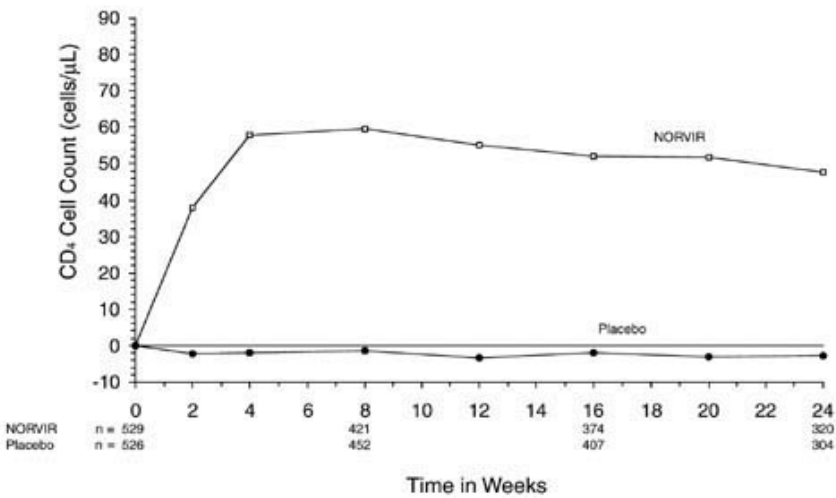
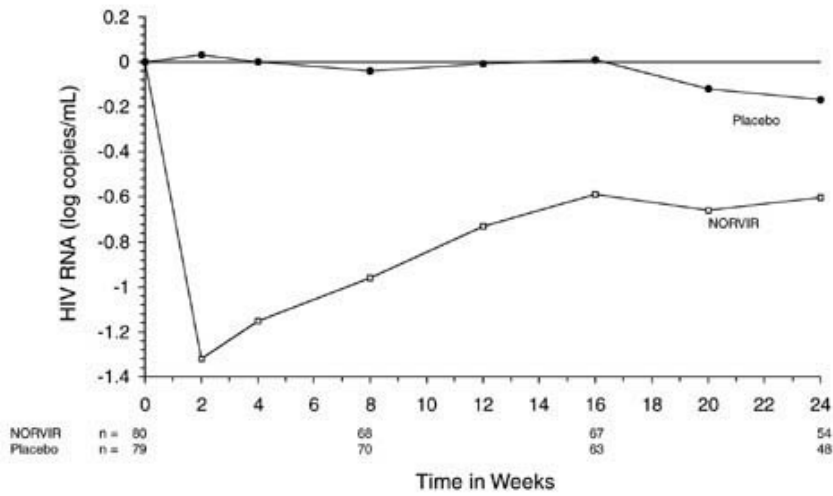


Figure 4. Mean Change from Baseline in HIV RNA (log copies/mL) During the Double-blind Phase of Study 247



Patients Without Prior Antiretroviral Therapy

In Study 245, 356 antiretroviral-naive HIV-infected patients (mean baseline CD<sub>4</sub> = 364 cells/μL) were randomized to receive either NORVIR 600 mg twice-daily, zidovudine 200 mg three-times-daily, or a combination of these drugs. Figure 5 and Figure 6 summarize the mean change from baseline for CD<sub>4</sub> cell count and plasma HIV RNA (copies/mL), respectively, during the first 24 weeks for the double-blind phase of Study 245.

Figure 5. Mean Change from Baseline in CD<sub>4</sub> Cell Count (cells/μL) During Study 245

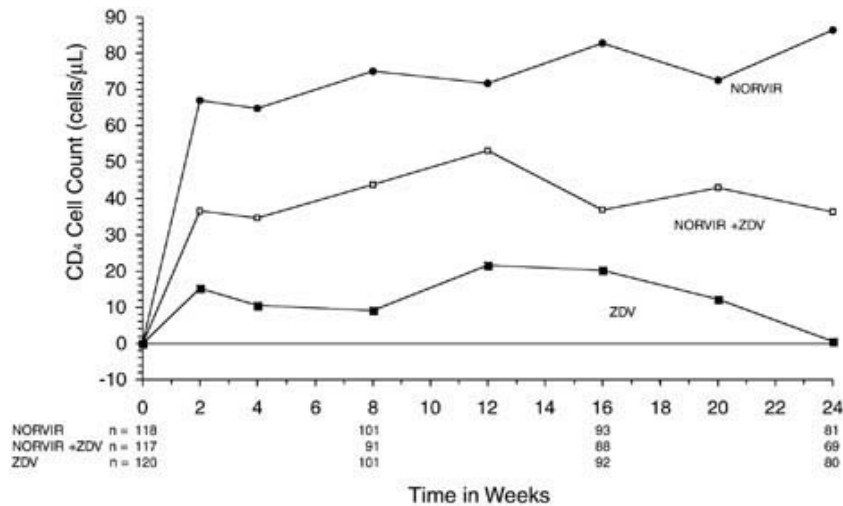
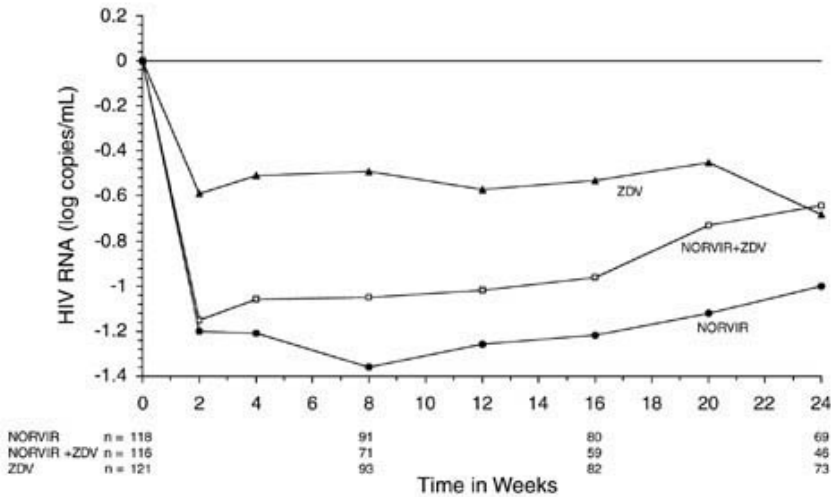


Figure 6. Mean Change from Baseline in HIV RNA (log copies/mL) During Study 245



## CONTRAINDICATIONS

NORVIR is contraindicated in patients with known hypersensitivity to ritonavir or any of its ingredients.

Co-administration of NORVIR is contraindicated with the drugs listed in Table 4 (also see **PRECAUTIONS - Table 5. Drugs that Should Not be Co-administered with NORVIR**) because competition for primarily CYP3A by ritonavir could result in inhibition of the metabolism of these drugs and create the potential for serious and/or life-threatening reactions such as cardiac arrhythmias, prolonged or increased sedation, and respiratory depression. Voriconazole is an exception in that co-administration of Norvir and Voriconazole results in a significant decrease in plasma concentrations of Voriconazole.

Table 4. Drugs that are Contraindicated with NORVIR

Drug Class	Drugs Within Class That Are CONTRAINDICATED With NORVIR
Alpha <sub>1</sub> -adrenoreceptor antagonist	Alfuzosin HCL
Antiarrhythmics	amiodarone, bepridil, flecainide, propafenone, quinidine
Antifungal	Voriconazole
Antihistamines	astemizole, terfenadine
Ergot Derivatives	dihydroergotamine, ergonovine, ergotamine, methylergonovine
GI Motility Agent	cisapride
Neuroleptic	pimozide
Sedative/hypnotics	midazolam, triazolam

## WARNINGS

**ALERT: Find out about medicines that should NOT be taken with NORVIR.** This statement is included on the product's bottle label.

### Drug Interactions

Ritonavir is an inhibitor of cytochrome P450 3A (CYP3A) both *in vitro* and *in vivo*. Ritonavir also inhibits CYP2D6 *in vitro*, but to a lesser extent than CYP3A. Co-administration of ritonavir and drugs primarily metabolized by CYP3A or CYP2D6 may result in increased plasma concentrations of other drugs that could increase or prolong its therapeutic and adverse effects (see **Pharmacokinetics - Drug-Drug Interactions, CONTRAINDICATIONS - Table 4. Drugs that are Contraindicated with NORVIR, PRECAUTIONS - Table 5. Drugs that Should Not be Co-administered with NORVIR, Table 6. Established and Other Potentially Significant Drug Interactions**).

The magnitude of the interactions and therapeutic consequences between ritonavir and some of the drugs listed in **Table 6. Established and Other Potentially Significant Drug Interactions** cannot be predicted with any certainty. When co-administering ritonavir with any agent listed in this table, special attention is warranted. Refer to **PRECAUTIONS - Drug Interactions** for additional information.

Cardiac and neurologic events have been reported with ritonavir when co-administered with disopyramide, mexiletine, nefazodone, fluoxetine and beta blockers. The possibility of drug interaction cannot be excluded.

Particular caution should be used when prescribing PDE5 inhibitors for erectile dysfunction (eg, sildenafil, tadalafil, or vardenafil) for patients receiving protease inhibitors, including NORVIR. Co-administration of NORVIR with a PDE5 inhibitor is expected to substantially increase PDE5 inhibitor concentrations and may result in an increase in sildenafil-associated adverse events, including hypotension, syncope, visual changes, and prolonged erection (see **PRECAUTIONS - Table 6. Established and Other Potentially Significant Drug Interactions** and the complete prescribing information for sildenafil, tadalafil and vardenafil).

Concomitant use of NORVIR with lovastatin or simvastatin is not recommended. Caution should be exercised if HIV protease inhibitors, including NORVIR, are used concurrently with other HMG-CoA reductase inhibitors that are also metabolized by the CYP3A4 pathway (e.g., atorvastatin or cerivastatin). The risk of myopathy including rhabdomyolysis may be increased when HIV protease inhibitors, including NORVIR, are used in combination with these drugs.

Concomitant use of NORVIR, and St. John's wort (*hypericum perforatum*) or products containing St. John's wort is not recommended. Co-administration of protease inhibitors, including NORVIR, with St. John's wort is expected to substantially decrease protease inhibitor concentrations and may result in sub-optimal levels of NORVIR and lead to loss of virologic response and possible resistance to NORVIR or to the class of protease inhibitors.

A drug interaction study in healthy subjects has shown that ritonavir significantly increases plasma fluticasone propionate exposures, resulting in significantly decreased serum cortisol concentrations. Systemic corticosteroid effects, including Cushing's syndrome and adrenal suppression have been reported during postmarketing use in patients receiving ritonavir and inhaled or intranasally administered fluticasone propionate. Therefore, co-administration of fluticasone propionate and NORVIR is not recommended unless the potential benefit to the patient outweighs the risk of systemic corticosteroid side effects (see **PRECAUTIONS - Drug Interactions**).

Tipranavir co-administered with 200 mg of ritonavir has been associated with reports of clinical hepatitis and hepatic decompensation including some fatalities. Extra vigilance is warranted in patients with chronic hepatitis B or hepatitis C co-infection, as these patients have an increased risk of hepatotoxicity.

### **Allergic Reactions**

Allergic reactions including urticaria, mild skin eruptions, bronchospasm, and angioedema have been reported. Rare cases of anaphylaxis and Stevens-Johnson syndrome have also been reported.

### **Hepatic Reactions**

Hepatic transaminase elevations exceeding 5 times the upper limit of normal, clinical hepatitis, and jaundice have occurred in patients receiving NORVIR alone or in

combination with other antiretroviral drugs (see Table 8). There may be an increased risk for transaminase elevations in patients with underlying hepatitis B or C. Therefore, caution should be exercised when administering NORVIR to patients with pre-existing liver diseases, liver enzyme abnormalities, or hepatitis. Increased AST/ALT monitoring should be considered in these patients, especially during the first three months of NORVIR treatment.

There have been postmarketing reports of hepatic dysfunction, including some fatalities. These have generally occurred in patients taking multiple concomitant medications and/or with advanced AIDS.

### **Pancreatitis**

Pancreatitis has been observed in patients receiving NORVIR therapy, including those who developed hypertriglyceridemia. In some cases fatalities have been observed. Patients with advanced HIV disease may be at increased risk of elevated triglycerides and pancreatitis.

Pancreatitis should be considered if clinical symptoms (nausea, vomiting, abdominal pain) or abnormalities in laboratory values (such as increased serum lipase or amylase values) suggestive of pancreatitis should occur. Patients who exhibit these signs or symptoms should be evaluated and NORVIR therapy should be discontinued if a diagnosis of pancreatitis is made.

### **Diabetes Mellitus/Hyperglycemia**

New onset diabetes mellitus, exacerbation of pre-existing diabetes mellitus, and hyperglycemia have been reported during postmarketing surveillance in HIV-infected patients receiving protease inhibitor therapy. Some patients required either initiation or dose adjustments of insulin or oral hypoglycemic agents for treatment of these events. In some cases, diabetic ketoacidosis has occurred. In those patients who discontinued protease inhibitor therapy, hyperglycemia persisted in some cases. Because these events have been reported voluntarily during clinical practice, estimates of frequency cannot be made and a causal relationship between protease inhibitor therapy and these events has not been established.



## PRECAUTIONS

### General

Ritonavir is principally metabolized by the liver. Therefore, caution should be exercised when administering this drug to patients with impaired hepatic function (see **WARNINGS** and **CLINICAL PHARMACOLOGY - Hepatic Insufficiency**).

### Resistance/Cross-resistance

Varying degrees of cross-resistance among protease inhibitors have been observed. Continued administration of ritonavir therapy following loss of viral suppression may increase the likelihood of cross-resistance to other protease inhibitors (see **Microbiology**).

### Hemophilia

There have been reports of increased bleeding, including spontaneous skin hematomas and hemarthrosis, in patients with hemophilia type A and B treated with protease inhibitors. In some patients additional factor VIII was given. In more than half of the reported cases, treatment with protease inhibitors was continued or reintroduced. A causal relationship has not been established.

### Fat Redistribution

Redistribution/accumulation of body fat including central obesity, dorsocervical fat enlargement (buffalo hump), peripheral wasting, facial wasting, breast enlargement, and "cushingoid appearance" have been observed in patients receiving antiretroviral therapy. The mechanism and long-term consequences of these events are currently unknown. A causal relationship has not been established.

### Lipid Disorders

Treatment with NORVIR therapy alone or in combination with saquinavir has resulted in substantial increases in the concentration of total triglycerides and cholesterol. Triglyceride and cholesterol testing should be performed prior to initiating NORVIR therapy and at periodic intervals during therapy. Lipid disorders should be managed as clinically appropriate. See **PRECAUTIONS - Table 5** and **Table 6** for additional information on potential drug interactions with NORVIR and HMG CoA reductase inhibitors.

## Immune Reconstitution Syndrome

Immune reconstitution syndrome has been reported in HIV-infected patients treated with combination antiretroviral therapy, including NORVIR. During the initial phase of combination antiretroviral treatment, patients whose immune system responds may develop an inflammatory response to indolent or residual opportunistic infections (such as *Mycobacterium avium* infection, cytomegalovirus, *Pneumocystis jiroveci* pneumonia, or tuberculosis), which may necessitate further evaluation and treatment.

## Information For Patients

A statement to patients and health care providers is included on the product's bottle label: **ALERT: Find out about medicines that should NOT be taken with NORVIR.** A Patient Package Insert (PPI) for Norvir is available for patient information.

Patients should be informed that NORVIR is not a cure for HIV infection and that they may continue to acquire illnesses associated with advanced HIV infection, including opportunistic infections.

Patients should be told that the long-term effects of NORVIR are unknown at this time. They should be informed that NORVIR therapy has not been shown to reduce the risk of transmitting HIV to others through sexual contact or blood contamination.

Patients should be advised to take NORVIR with food, if possible.

Patients should be informed to take NORVIR every day as prescribed. Patients should not alter the dose or discontinue NORVIR without consulting their doctor. If a dose is missed, patients should take the next dose as soon as possible. However, if a dose is skipped, the patient should not double the next dose.

Patients should be informed that redistribution or accumulation of body fat may occur in patients receiving antiretroviral therapy and that the cause and long term health effects of these conditions are not known at this time.

NORVIR may interact with some drugs; therefore, patients should be advised to report to their doctor the use of any other prescription, non-prescription medication or herbal products, particularly St. John's wort.

Patients receiving PDE5 inhibitors for erectile dysfunction (eg, sildenafil, tadalafil, or vardenafil) should be advised that they may be at an increased risk of associated adverse

events including hypotension, visual changes, and sustained erection, and should promptly report any symptoms to their doctor. Patients receiving estrogen-based hormonal contraceptives should be instructed that additional or alternate contraceptive measures should be used during therapy with NORVIR.

### Laboratory Tests

Ritonavir has been shown to increase triglycerides, cholesterol, SGOT (AST), SGPT (ALT), GGT, CPK, and uric acid. Appropriate laboratory testing should be performed prior to initiating NORVIR therapy and at periodic intervals or if any clinical signs or symptoms occur during therapy. For comprehensive information concerning laboratory test alterations associated with reverse transcriptase inhibitors, physicians should refer to the complete product information for each of these drugs.

### Drug Interactions

Ritonavir has been found to be an inhibitor of cytochrome P450 3A (CYP3A) both *in vitro* and *in vivo* (Table 3). Agents that are extensively metabolized by CYP3A and have high first pass metabolism appear to be the most susceptible to large increases in AUC (> 3-fold) when co-administered with ritonavir. Ritonavir also inhibits CYP2D6 to a lesser extent. Co-administration of substrates of CYP2D6 with ritonavir could result in increases (up to 2-fold) in the AUC of the other agent, possibly requiring a proportional dosage reduction. Ritonavir also appears to induce CYP3A as well as other enzymes, including glucuronosyl transferase, CYP1A2, and possibly CYP2C9.

Drugs that are contraindicated specifically due to the expected magnitude of interaction and potential for serious adverse events are listed both in **CONTRAINDICATIONS - Table 4** and under **Drugs That Should Not Be Co-administered with NORVIR in Table 5**.

Those drug interactions that have been established based on drug interaction studies are listed with the pharmacokinetic results in **CLINICAL PHARMACOLOGY - Table 2** and **Table 3**. The clinical recommendations based on the results of these studies are listed in **Table 6. Established and Other Potentially Significant Drug Interactions**. A systematic review of over 200 medications prescribed to HIV-infected patients was performed to identify potential drug interactions with ritonavir.<sup>2</sup> There are a number of agents in which CYP3A or CYP2D6 partially contribute to the metabolism of the agent. In these cases, the

magnitude of the interaction and therapeutic consequences cannot be predicted with any certainty.

When co-administering ritonavir with calcium channel blockers, immunosuppressants, some HMG-CoA reductase inhibitors (see **WARNINGS - Drug Interactions**), some steroids, or other substrates of CYP3A; or most antidepressants, certain antiarrhythmics, and some narcotic analgesics which are partially mediated by CYP2D6 metabolism, it is possible that substantial increases in concentrations of these other agents may occur, possibly requiring a dosage reduction (> 50%); examples are listed in **Table 6. Established and Other Potentially Significant Drug Interactions**.

When co-administering ritonavir with any agent having a narrow therapeutic margin, such as anticoagulants, anticonvulsants, and antiarrhythmics, special attention is warranted. With some agents, the metabolism may be induced, resulting in decreased concentrations (see **Table 6. Established and Other Potentially Significant Drug Interactions**).

**Table 5. Drugs that Should Not be Co-administered with NORVIR**

<b>Drug Class: Drug Name</b>	<b>Clinical Comment</b>
Alpha Adrenergic Antagonist: alfuzosin	CONTRAINDICATED due to potential for serious reactions such as hypotension.
Antiarrhythmics: amiodarone, bepridil, flecainide, propafenone, quinidine	CONTRAINDICATED due to potential for serious and/or life threatening reactions such as cardiac arrhythmias.
Antifungal: voriconazole	CONTRAINDICATED due to significant decreases in voriconazole plasma concentrations and may lead to loss of antifungal response.
Antihistamines: astemizole, terfenadine	CONTRAINDICATED due to potential for serious and/or life-threatening reactions such as cardiac arrhythmias.
Ergot Derivatives: dihydroergotamine, ergonovine, ergotamine, methylergonovine	CONTRAINDICATED due to potential for serious and/or life-threatening reactions such as acute ergot toxicity characterized by vasospasm and ischemia of the extremities and other tissues including the central nervous system.
GI Motility Agent: cisapride	CONTRAINDICATED due to potential for serious and/or life-threatening reactions such as cardiac arrhythmias.
Herbal Products: St. John's wort (hypericum perforatum)	May lead to loss of virologic response and possible resistance to NORVIR or to the class of protease inhibitors.
HMG-CoA Reductase Inhibitors: lovastatin, simvastatin	Potential for serious reactions such as risk of myopathy including rhabdomyolysis.
Neuroleptic: pimozide	CONTRAINDICATED due to the potential for serious and/or life-threatening reactions such as cardiac arrhythmias.

Sedative/hypnotics: CONTRAINDICATED due to potential for serious and/or life-threatening reactions such as prolonged or increased sedation or respiratory depression.  
midazolam, triazolam

**Table 6. Established and Other Potentially Significant Drug Interactions: Alteration in Dose or Regimen Recommended Based on Drug Interaction Studies or Predicted Interaction (see CLINICAL PHARMACOLOGY - Table 2 and Table 3 for Magnitude of Interaction)**

Concomitant Drug Class: Drug Name	Effect on Concentration of Ritonavir or Concomitant Drug	Clinical Comment
<i>HIV-Antiviral Agents</i>		
HIV Protease Inhibitor: atazanavir	When co-administered with reduced doses of atazanavir and ritonavir ↑ atazanavir (↑ AUC, ↑ C <sub>max</sub> , ↑ C <sub>min</sub> )	Atazanavir plasma concentrations achieved with atazanavir 300 mg q.d and ritonavir 100 mg q.d. are higher than those achieved with atazanavir 400 mg q.d. See the complete prescribing information for Reyataz <sup>®</sup> (atazanavir) for details on co-administration of atazanavir 300 mg q.d, with ritonavir 100 mg q.d.
HIV Protease Inhibitor: darunavir	When co-administered with reduced doses of ritonavir ↑ darunavir (↑ AUC, ↑ C <sub>max</sub> , ↑ C <sub>min</sub> )	See the complete prescribing information for Prezista <sup>®</sup> (darunavir) for details on co-administration darunavir 600 mg b.i.d with ritonavir 100 mg b.i.d.
HIV Protease Inhibitor: fosamprenavir	When co-administered with reduced doses of ritonavir ↑ amprenavir (↑ AUC, ↑ C <sub>max</sub> , ↑ C <sub>min</sub> )	See the complete prescribing information for Lexiva <sup>®</sup> (fosamprenavir) for details on co-administration fosamprenavir 700 mg b.i.d with ritonavir 100 mg b.i.d. or fosamprenavir 1400 mg q.d. with ritonavir 200 mg q.d.
HIV Protease Inhibitor: indinavir	When co-administered with reduced doses of indinavir and ritonavir ↑ indinavir (↔ AUC, ↓ C <sub>max</sub> , ↑ C <sub>min</sub> )	Alterations in concentrations are noted when reduced doses of indinavir are co-administered with NORVIR. Appropriate doses for this combination, with respect to efficacy and safety, have not been established.
HIV Protease Inhibitor: saquinavir	When co-administered with reduced doses of ritonavir ↑ saquinavir (↑ AUC, ↑ C <sub>max</sub> , ↑ C <sub>min</sub> )	See the complete prescribing information for Invirase <sup>®</sup> (saquinavir) for details on co-administration of saquinavir 1000 mg b.i.d with ritonavir 100 mg b.i.d. Saquinavir/ritonavir should not be given together with rifampin, due to the risk of severe hepatotoxicity (presenting as increased hepatic transaminases) if the three drugs are given together.

HIV Protease Inhibitor: tipranavir	When co-administered with reduced doses of ritonavir ↑ tipranavir (↑ AUC, ↑ C <sub>max</sub> , ↑ C <sub>min</sub> )	See the complete prescribing information for Aptivus® (tipranavir) for details on co-administration of tipranavir 500 mg b.i.d with ritonavir 200 mg b.i.d.
Non-Nucleoside Reverse Transcriptase Inhibitor: delavirdine	↑ ritonavir (↑AUC, ↑C <sub>max</sub> , ↑ C <sub>min</sub> )	Appropriate doses of this combination with respect to safety and efficacy have not been established.
Nucleoside Reverse Transcriptase Inhibitor: didanosine		Dosing of didanosine and ritonavir should be separated by 2.5 hours to avoid formulation incompatibility.

### **Other Agents**

Analgesics, Narcotic: tramadol, propoxyphene		A dose decrease may be needed for these drugs when co-administered with ritonavir.
Anesthetic: meperidine	↓ meperidine/ ↑ normeperidine (metabolite)	Dosage increase and long-term use of meperidine with ritonavir are not recommended due to the increased concentrations of the metabolite normeperidine which has both analgesic activity and CNS stimulant activity (e.g., seizures).
Antialcoholics: disulfiram/ metronidazole		Ritonavir formulations contain alcohol, which can produce disulfiram-like reactions when co-administered with disulfiram or other drugs that produce this reaction (e.g., metronidazole).
Antiarrhythmics: disopyramide, lidocaine, mexilitine	↑ antiarrhythmics	Caution is warranted and therapeutic concentration monitoring is recommended for antiarrhythmics when co-administered with ritonavir, if available.
Anticoagulant: warfarin	↓ R-warfarin ↓ ↑ S-warfarin	Initial frequent monitoring of the INR during ritonavir and warfarin co-administration is indicated.
Anticonvulsants: carbamazepine, clonazepam, ethosuximide	↑ anticonvulsants	Use with caution. A dose decrease may be needed for these drugs when co-administered with ritonavir and therapeutic concentration monitoring is recommended for these anticonvulsants, if available.
Anticonvulsants: divalproex, lamotrigine, phenytoin	↓ anticonvulsants	Use with caution. A dose increase may be needed for these drugs when co-administered with ritonavir and therapeutic concentration monitoring is recommended for these anticonvulsants, if available.
Antidepressants: bupropion, nefazodone, selective serotonin reuptake inhibitors (SSRIs), tricyclics	↑ antidepressants	A dose decrease may be needed for these drugs when co-administered with ritonavir.

Antidepressant: desipramine	↑ desipramine	Dosage reduction and concentration monitoring of desipramine is recommended.
Antidepressant: trazodone	↑ trazodone	Concomitant use of trazodone and NORVIR increases plasma concentrations of trazodone. Adverse events of nausea, dizziness, hypotension and syncope have been observed following co-administration of trazodone and NORVIR. If trazodone is used with a CYP3A4 inhibitor such as ritonavir, the combination should be used with caution and a lower dose of trazodone should be considered.
Antiemetic: dronabinol	↑ dronabinol	A dose decrease of dronabinol may be needed when co-administered with ritonavir.
Antifungal: ketoconazole itraconazole	↑ ketoconazole ↑ itraconazole	High doses of ketoconazole or itraconazole (> 200 mg/day) are not recommended.
Anti-infective: clarithromycin	↑ clarithromycin	For patients with renal impairment the following dosage adjustments should be considered: <ul style="list-style-type: none"> <li>• For patients with CL<sub>CR</sub> 30 to 60 mL/min the dose of clarithromycin should be reduced by 50%.</li> <li>• For patients with CL<sub>CR</sub> &lt; 30 mL/min the dose of clarithromycin should be decreased by 75%.</li> </ul> <p>No dose adjustment for patients with normal renal function is necessary.</p>
Antimycobacterial: rifabutin	↑ rifabutin and rifabutin metabolite	Dosage reduction of rifabutin by at least three-quarters of the usual dose of 300 mg/day is recommended (e.g., 150 mg every other day or three times a week). Further dosage reduction may be necessary.
Antimycobacterial: rifampin	↓ ritonavir	May lead to loss of virologic response. Alternate antimycobacterial agents such as rifabutin should be considered (see Antimycobacterial: rifabutin, for dose reduction recommendations).
Antiparasitic: atovaquone	↓ atovaquone	Clinical significance is unknown; however, increase in atovaquone dose may be needed.
Antiparasitic: quinine	↑ quinine	A dose decrease of quinine may be needed when co-administered with ritonavir.
β-Blockers: metoprolol, timolol	↑ Beta-Blockers	Caution is warranted and clinical monitoring of patients is recommended. A dose decrease may be needed for these drugs when co-administered with ritonavir.
Bronchodilator: theophylline	↓ theophylline	Increased dosage of theophylline may be required; therapeutic monitoring should be considered.

Calcium channel blockers: ↑ calcium channel blockers  
diltiazem, nifedipine,  
verapamil

Digoxin ↑ digoxin

PDE5 Inhibitors: ↑ sildenafil  
sildenafil, ↑ tadalafil  
tadalafil, ↑ vardenafil  
vardenafil

HMG-CoA Reductase Inhibitor: ↑ atorvastatin  
atorvastatin ↑ rosuvastatin  
rosuvastatin

Immuno-suppressants: ↑ immuno-suppressants  
cyclosporine, tacrolimus,  
sirolimus (rapamycin)

Inhaled Steroid: ↑ fluticasone  
Fluticasone

Narcotic Analgesic: ↓ methadone  
methadone

Neuroleptics: ↑ neuroleptics  
perphenazine, risperidone,  
thioridazine

Caution is warranted and clinical monitoring of patients is recommended. A dose decrease may be needed for these drugs when co-administered with ritonavir.

Concomitant administration of ritonavir with digoxin may increase digoxin levels. Caution should be exercised when coadministering ritonavir with digoxin, with appropriate monitoring of serum digoxin levels.

Sildenafil: Particular caution should be used when prescribing sildenafil in patients receiving ritonavir. Coadministration of ritonavir with sildenafil is expected to substantially increase sildenafil concentrations (11-fold increase in AUC) and may result in an increase in sildenafil-associated adverse events, including hypotension, syncope, visual changes, and prolonged erection. The starting dose should not, in any case, exceed 25 mg in a 48-hour period in patients receiving concomitant ritonavir therapy (see **WARNINGS**).

Tadalafil: Use tadalafil with caution at reduced doses of no more than 10 mg every 72 hours with increased monitoring for adverse events. Vardenafil: Use vardenafil with caution at reduced doses of no more than 2.5 mg every 72 hours with increased monitoring for adverse events (see **WARNINGS**).

Use the lowest possible dose of atorvastatin or rosuvastatin with careful monitoring or consider other HMG-CoA reductase inhibitors such as pravastatin or fluvastatin in combination with Norvir.

Therapeutic concentration monitoring is recommended for immunosuppressant agents when co-administered with ritonavir.

Concomitant use of fluticasone propionate and NORVIR increases plasma concentrations of fluticasone propionate, resulting in significantly reduced serum cortisol concentrations. Co-administration of fluticasone propionate and NORVIR is not recommended unless the potential benefit to the patient outweighs the risk of systemic corticosteroid side effects (see **WARNINGS**).

Dosage increase of methadone may be considered.

A dose decrease may be needed for these drugs when co-administered with ritonavir.



Oral Contraceptives or Patch Contraceptives: ethinyl estradiol	↓ ethinyl estradiol	A pharmacokinetic study demonstrated that the concomitant administration of ritonavir 500 mg q. 12h. and a fixed-combination oral contraceptive resulted in reductions of the ethinyl estradiol mean C <sub>max</sub> and mean AUC by 32% and 40%, respectively. Alternate methods of contraception should be considered.
Sedative/hypnotics: buspirone, clorazepate, diazepam, estazolam, flurazepam, zolpidem	↑ sedative/hypnotics	A dose decrease may be needed for these drugs when co-administered with ritonavir.
Steroids: dexamethasone, fluticasone, prednisone		A dose decrease may be needed for these drugs when co-administered with ritonavir.
Stimulant: methamphetamine	↑ methamphetamine	Use with caution. A dose decrease of methamphetamine may be needed when co-administered with ritonavir.

## Carcinogenesis and Mutagenesis

Carcinogenicity studies in mice and rats have been carried out on ritonavir. In male mice, at levels of 50, 100 or 200 mg/kg/day, there was a dose dependent increase in the incidence of both adenomas and combined adenomas and carcinomas in the liver. Based on AUC measurements, the exposure at the high dose was approximately 0.3-fold for males that of the exposure in humans with the recommended therapeutic dose (600 mg twice-daily). There were no carcinogenic effects seen in females at the dosages tested. The exposure at the high dose was approximately 0.6-fold for the females that of the exposure in humans. In rats dosed at levels of 7, 15 or 30 mg/kg/day there were no carcinogenic effects. In this study, the exposure at the high dose was approximately 6% that of the exposure in humans with the recommended therapeutic dose. Based on the exposures achieved in the animal studies, the significance of the observed effects is not known. However, ritonavir was found to be negative for mutagenic or clastogenic activity in a battery of *in vitro* and *in vivo* assays including the Ames bacterial reverse mutation assay using *S. typhimurium* and *E. coli*, the mouse lymphoma assay, the mouse micronucleus test and chromosomal aberration assays in human lymphocytes.

## Pregnancy, Fertility, and Reproduction

Pregnancy Category B

Ritonavir produced no effects on fertility in rats at drug exposures approximately 40% (male) and 60% (female) of that achieved with the proposed therapeutic dose. Higher dosages were not feasible due to hepatic toxicity.

No treatment related malformations were observed when ritonavir was administered to pregnant rats or rabbits. Developmental toxicity observed in rats (early resorptions, decreased fetal body weight and ossification delays and developmental variations) occurred at a maternally toxic dosage at an exposure equivalent to approximately 30% of that achieved with the proposed therapeutic dose. A slight increase in the incidence of cryptorchidism was also noted in rats at an exposure approximately 22% of that achieved with the proposed therapeutic dose.

Developmental toxicity observed in rabbits (resorptions, decreased litter size and decreased fetal weights) also occurred at a maternally toxic dosage equivalent to 1.8 times the proposed therapeutic dose based on a body surface area conversion factor.

There are, however, no adequate and well-controlled studies in pregnant women. Because animal reproduction studies are not always predictive of human response, this drug should be used during pregnancy only if clearly needed.

#### Antiretroviral Pregnancy Registry

To monitor maternal-fetal outcomes of pregnant women exposed to NORVIR, an Antiretroviral Pregnancy Registry has been established. Physicians are encouraged to register patients by calling 1-800-258-4263.

#### Nursing Mothers

**The Centers for Disease Control and Prevention recommend that HIV-infected mothers not breast-feed their infants to avoid risking postnatal transmission of HIV.** It is not known whether ritonavir is secreted in human milk. Because of both the potential for HIV transmission and the potential for serious adverse reactions in nursing infants, mothers should be instructed **not to breast-feed if they are receiving NORVIR.**

#### Pediatric Use

In HIV-infected patients age > 1 month to 21 years, the antiviral activity and adverse event profile seen during clinical trials and through postmarketing experience were similar to that for adult patients.

## **Geriatric Use**

Clinical studies of NORVIR did not include sufficient numbers of subjects aged 65 and over to determine whether they respond differently from younger subjects. In general, dose selection for an elderly patient should be cautious, usually starting at the low end of the dosing range, reflecting the greater frequency of decreased hepatic, renal or cardiac function, and of concomitant disease or other drug therapy.

## **ADVERSE REACTIONS**

### **Adults**

The safety of NORVIR alone and in combination with nucleoside reverse transcriptase inhibitors was studied in 1270 adult patients. Table 7 lists treatment-emergent adverse events (at least possibly related and of at least moderate intensity) that occurred in 2% or greater of adult patients receiving NORVIR alone or in combination with nucleoside reverse transcriptase inhibitors in Study 245 or Study 247 and in combination with saquinavir in study 462. In that study, 141 protease inhibitor-naive, HIV-infected patients with mean baseline CD<sub>4</sub> of 300 cells/ $\mu$ L were randomized to one of four regimens of NORVIR + saquinavir, including NORVIR 400 mg twice-daily + saquinavir 400 mg twice-daily. Overall the most frequently reported clinical adverse events, other than asthenia, among adult patients receiving NORVIR were gastrointestinal and neurological disturbances including nausea, diarrhea, vomiting, anorexia, abdominal pain, taste perversion, and circumoral and peripheral paresthesias. Similar adverse event profiles were reported in adult patients receiving ritonavir in other trials.

**Table 7. Percentage of Patients with Treatment-emergent Adverse Events<sup>1</sup> of Moderate or Severe Intensity Occurring in ≥ 2% of Adult Patients Receiving NORVIR**

Adverse Events	Study 245		Study 247		Study 462	
	Naive Patients <sup>2</sup>		Advanced Patients <sup>3</sup>		PI-Naive Patients <sup>4</sup>	
	NORVIR + ZDV n = 116	NORVIR n = 117	ZDV n = 119	NORVIR n = 541	Placebo n = 545	NORVIR + Saquinavir n = 141
<b>Body as a Whole</b>						
Abdominal Pain	5.2	6.0	5.9	8.3	5.1	2.1
Asthenia	28.4	10.3	11.8	15.3	6.4	16.3
Fever	1.7	0.9	1.7	5.0	2.4	0.7
Headache	7.8	6.0	6.7	6.5	5.7	4.3
Malaise	5.2	1.7	3.4	0.7	0.2	2.8
Pain (unspecified)	0.9	1.7	0.8	2.2	1.8	4.3
<b>Cardiovascular</b>						
Syncope	0.9	1.7	0.8	0.6	0.0	2.1
Vasodilation	3.4	1.7	0.8	1.7	0.0	3.5
<b>Digestive</b>						
Anorexia	8.6	1.7	4.2	7.8	4.2	4.3
Constipation	3.4	0.0	0.8	0.2	0.4	1.4
Diarrhea	25.0	15.4	2.5	23.3	7.9	22.7
Dyspepsia	2.6	0.0	1.7	5.9	1.5	0.7
Fecal Incontinence	0.0	0.0	0.0	0.0	0.0	2.8
Flatulence	2.6	0.9	1.7	1.7	0.7	3.5
Local Throat Irritation	0.9	1.7	0.8	2.8	0.4	1.4
Nausea	46.6	25.6	26.1	29.8	8.4	18.4
Vomiting	23.3	13.7	12.6	17.4	4.4	7.1
<b>Metabolic and Nutritional</b>						
Weight Loss	0.0	0.0	0.0	2.4	1.7	0.0
<b>Musculoskeletal</b>						
Arthralgia	0.0	0.0	0.0	1.7	0.7	2.1
Myalgia	1.7	1.7	0.8	2.4	1.1	2.1
<b>Nervous</b>						
Anxiety	0.9	0.0	0.8	1.7	0.9	2.1
Circumoral	5.2	3.4	0.0	6.7	0.4	6.4
<b>Paresthesia</b>						
Confusion	0.0	0.9	0.0	0.6	0.6	2.1

Depression	1.7	1.7	2.5	1.7	0.7	7.1
Dizziness	5.2	2.6	3.4	3.9	1.1	8.5
Insomnia	3.4	2.6	0.8	2.0	1.8	2.8
Paresthesia	5.2	2.6	0.0	3.0	0.4	2.1
Peripheral Paresthesia	0.0	6.0	0.8	5.0	1.1	5.7
Somnolence	2.6	2.6	0.0	2.4	0.2	0.0
Thinking Abnormal	2.6	0.0	0.8	0.9	0.4	0.7
<b>Respiratory</b>						
Pharyngitis	0.9	2.6	0.0	0.4	0.4	1.4
<b>Skin and Appendages</b>						
Rash	0.9	0.0	0.8	3.5	1.5	0.7
Sweating	3.4	2.6	1.7	1.7	1.1	2.8
<b>Special Senses</b>						
Taste Perversion	17.2	11.1	8.4	7.0	2.2	5.0
<b>Urogenital</b>						
Nocturia	0.0	0.0	0.0	0.2	0.0	2.8

1 Includes those adverse events at least possibly related to study drug or of unknown relationship and excludes concurrent HIV conditions.

2 The median duration of treatment for patients randomized to regimens containing NORVIR in Study 245 was 9.1 months.

3 The median duration of treatment for patients randomized to regimens containing NORVIR in Study 247 was 9.4 months.

4 The median duration of treatment for patients in Study 462 was 48 weeks.

Adverse events occurring in less than 2% of adult patients receiving NORVIR in all phase II/phase III studies and considered at least possibly related or of unknown relationship to treatment and of at least moderate intensity are listed below by body system.

#### Body as a Whole

Abdomen enlarged, accidental injury, allergic reaction, back pain, cachexia, chest pain, chills, facial edema, facial pain, flu syndrome, hormone level altered, hypothermia, kidney pain, neck pain, neck rigidity, pelvic pain, photosensitivity reaction, and substernal chest pain.

## Cardiovascular System

Cardiovascular disorder, cerebral ischemia, cerebral venous thrombosis, hypertension, hypotension, migraine, myocardial infarct, palpitation, peripheral vascular disorder, phlebitis, postural hypotension, tachycardia and vasospasm.

## Digestive System

Abnormal stools, bloody diarrhea, cheilitis, cholestatic jaundice, colitis, dry mouth, dysphagia, eructation, esophageal ulcer, esophagitis, gastritis, gastroenteritis, gastrointestinal disorder, gastrointestinal hemorrhage, gingivitis, hepatic coma, hepatitis, hepatomegaly, hepatosplenomegaly, ileus, liver damage, melena, mouth ulcer, pancreatitis, pseudomembranous colitis, rectal disorder, rectal hemorrhage, sialadenitis, stomatitis, tenesmus, thirst, tongue edema, and ulcerative colitis.

## Endocrine System

Adrenal cortex insufficiency and diabetes mellitus.

## Hemic and Lymphatic System

Acute myeloblastic leukemia, anemia, ecchymosis, leukopenia, lymphadenopathy, lymphocytosis, myeloproliferative disorder, and thrombocytopenia.

## Metabolic and Nutritional Disorders

Albuminuria, alcohol intolerance, avitaminosis, BUN increased, dehydration, edema, enzymatic abnormality, glycosuria, gout, hypercholesteremia, peripheral edema, and xanthomatosis.

## Musculoskeletal System

Arthritis, arthrosis, bone disorder, bone pain, extraocular palsy, joint disorder, leg cramps, muscle cramps, muscle weakness, myositis, and twitching.

## Nervous System

Abnormal dreams, abnormal gait, agitation, amnesia, aphasia, ataxia, coma, convulsion, dementia, depersonalization, diplopia, emotional lability, euphoria, grand mal convulsion, hallucinations, hyperesthesia, hyperkinesia, hypesthesia, incoordination, libido decreased,

manic reaction, nervousness, neuralgia, neuropathy, paralysis, peripheral neuropathic pain, peripheral neuropathy, peripheral sensory neuropathy, personality disorder, sleep disorder, speech disorder, stupor, subdural hematoma, tremor, urinary retention, vertigo, and vestibular disorder.

### Respiratory System

Asthma, bronchitis, dyspnea, epistaxis, hiccup, hypoventilation, increased cough, interstitial pneumonia, larynx edema, lung disorder, rhinitis, and sinusitis.

### Skin and Appendages

Acne, contact dermatitis, dry skin, eczema, erythema multiforme, exfoliative dermatitis, folliculitis, fungal dermatitis, furunculosis, maculopapular rash, molluscum contagiosum, onychomycosis, pruritus, psoriasis, pustular rash, seborrhea, skin discoloration, skin disorder, skin hypertrophy, skin melanoma, urticaria, and vesiculobullous rash.

### Special Senses

Abnormal electro-oculogram, abnormal electroretinogram, abnormal vision, amblyopia/blurred vision, blepharitis, conjunctivitis, ear pain, eye disorder, eye pain, hearing impairment, increased cerumen, iritis, parosmia, photophobia, taste loss, tinnitus, uveitis, visual field defect, and vitreous disorder.

### Urogenital System

Acute kidney failure, breast pain, cystitis, dysuria, hematuria, impotence, kidney calculus, kidney failure, kidney function abnormal, kidney pain, menorrhagia, penis disorder, polyuria, urethritis, urinary frequency, urinary tract infection, and vaginitis.

### Post-Marketing Experience

The following adverse events have been reported during post-marketing use of NORVIR. Because these reactions are reported voluntarily from a population of unknown size, it is not possible to reliably estimate their frequency or establish a causal relationship to NORVIR exposure.

### *Body as a Whole*

Dehydration, usually associated with gastrointestinal symptoms, and sometimes resulting in hypotension, syncope, or renal insufficiency has been reported. Syncope, orthostatic hypotension, and renal insufficiency have also been reported without known dehydration.

Co-administration of ritonavir with ergotamine or dihydroergotamine has been associated with acute ergot toxicity characterized by vasospasm and ischemia of the extremities and other tissues including the central nervous system.

Redistribution/accumulation of body fat has been reported (see **PRECAUTIONS - Fat Redistribution**).

### *Cardiovascular System*

Cardiac and neurologic events have been reported when ritonavir has been co-administered with disopyramide, mexiletine, nefazodone, fluoxetine, and beta blockers. The possibility of drug interaction cannot be excluded.

### *Endocrine System*

Cushing's syndrome and adrenal suppression have been reported when ritonavir has been co-administered with fluticasone propionate.

### *Hemic and Lymphatic System*

There have been reports of increased bleeding in patients with hemophilia A or B (see **PRECAUTIONS - Hemophilia**).

### *Nervous System*

There have been postmarketing reports of seizure. Also, see Cardiovascular System.

### Laboratory Abnormalities

Table 8 shows the percentage of adult patients who developed marked laboratory abnormalities.



**Table 8. Percentage of Adult Patients, by Study and Treatment Group, with Chemistry and Hematology Abnormalities Occurring in > 3% of Patients Receiving NORVIR**

Variable	Limit	Study 245			Study 247		Study 462PI-Naive
		NORVIR + ZDV	NORVIR	ZDV	NORVIR	Placebo	NORVIR + Saquinavir
<b><u>Chemistry</u></b>	<b><u>High</u></b>						
Cholesterol	> 240 mg/dL	30.7	44.8	9.3	36.5	8.0	65.2
CPK	> 1000 IU/L	9.6	12.1	11.0	9.1	6.3	9.9
GGT	> 300 IU/L	1.8	5.2	1.7	19.6	11.3	9.2
SGOT (AST)	> 180 IU/L	5.3	9.5	2.5	6.4	7.0	7.8
SGPT (ALT)	> 215 IU/L	5.3	7.8	3.4	8.5	4.4	9.2
Triglycerides	> 800 mg/dL	9.6	17.2	3.4	33.6	9.4	23.4
Triglycerides	> 1500 mg/dL	1.8	2.6	-	12.6	0.4	11.3
Triglycerides	> 1500 mg/dL	1.5	1.3	-	9.9	0.3	-
Fasting Uric Acid	> 12 mg/dL	-	-	-	3.8	0.2	1.4
<b><u>Hematology</u></b>	<b><u>Low</u></b>						
Hematocrit	< 30%	2.6	-	0.8	17.3	22.0	0.7
Hemoglobin	< 8.0 g/dL	0.9	-	-	3.8	3.9	-
Neutrophils	≤ 0.5 x 10 <sup>9</sup> /L	-	-	-	6.0	8.3	-
RBC	< 3.0 x 10 <sup>12</sup> /L	1.8	-	5.9	18.6	24.4	-
WBC	< 2.5 x 10 <sup>9</sup> /L	-	0.9	6.8	36.9	59.4	3.5

1 ULN = upper limit of the normal range.

- Indicates no events reported.

## **Pediatrics**

### Treatment-Emergent Adverse Events

NORVIR has been studied in 265 pediatric patients > 1 month to 21 years of age. The adverse event profile observed during pediatric clinical trials was similar to that for adult patients.

Vomiting, diarrhea, and skin rash/allergy were the only drug-related clinical adverse events of moderate to severe intensity observed in  $\geq 2\%$  of pediatric patients enrolled in NORVIR clinical trials.

### Laboratory Abnormalities

The following Grade 3-4 laboratory abnormalities occurred in > 3% of pediatric patients who received treatment with NORVIR either alone or in combination with reverse transcriptase inhibitors: neutropenia (9%), hyperamylasemia (7%), thrombocytopenia (5%), anemia (4%), and elevated AST (3%).

## **OVERDOSAGE**

### **Acute Overdosage**

#### Human Overdose Experience

Human experience of acute overdose with NORVIR is limited. One patient in clinical trials took NORVIR 1500 mg/day for two days. The patient reported paresthesias which resolved after the dose was decreased. A post-marketing case of renal failure with eosinophilia has been reported with ritonavir overdose.

The approximate lethal dose was found to be greater than 20 times the related human dose in rats and 10 times the related human dose in mice.

### **Management of Overdosage**

NORVIR oral solution contains 43% alcohol by volume. Accidental ingestion of the product by a young child could result in significant alcohol-related toxicity and could approach the potential lethal dose of alcohol.

Treatment of overdose with NORVIR consists of general supportive measures including monitoring of vital signs and observation of the clinical status of the patient. There is no specific antidote for overdose with NORVIR. If indicated, elimination of unabsorbed drug should be achieved by emesis or gastric lavage; usual precautions should be observed to maintain the airway. Administration of activated charcoal may also be used to aid in removal of unabsorbed drug. Since ritonavir is extensively metabolized by the liver and is highly protein bound, dialysis is unlikely to be beneficial in significant removal of the drug. A Certified Poison Control Center should be consulted for up-to-date information on the management of overdose with NORVIR.

## **DOSAGE AND ADMINISTRATION**

NORVIR is administered orally. It is recommended that NORVIR be taken with meals if possible. Patients may improve the taste of NORVIR oral solution by mixing with chocolate milk, Ensure<sup>®</sup>, or Advera<sup>®</sup> within one hour of dosing. The effects of antacids on the absorption of ritonavir have not been studied.

### **Adults**

#### **Recommended Dosage**

The recommended dosage of ritonavir is 600 mg twice daily by mouth. Use of a dose titration schedule may help to reduce treatment-emergent adverse events while maintaining appropriate ritonavir plasma levels. Ritonavir should be started at no less than 300 mg twice daily and increased at 2 to 3 day intervals by 100 mg twice daily.

### **Pediatric Patients**

Ritonavir should be used in combination with other antiretroviral agents (see **General Dosing Guidelines** ). The recommended dosage of ritonavir in children > 1 month is 350 to 400 mg/m<sup>2</sup> twice daily by mouth and should not exceed 600 mg twice daily. Ritonavir should be started at 250 mg/m<sup>2</sup> and increased at 2 to 3 day intervals by 50 mg/m<sup>2</sup> twice daily. If patients do not tolerate 400 mg/m<sup>2</sup> twice daily due to adverse events, the highest tolerated dose may be used for maintenance therapy in combination with other antiretroviral agents, however, alternative therapy should be considered. When possible, dose should be administered using a calibrated dosing syringe.

## Pediatric Dosage Guidelines<sup>1</sup>

Body Surface Area* (m <sup>2</sup> )	Twice Daily Dose	Twice Daily Dose	Twice Daily Dose	Twice Daily Dose
	250 mg/m <sup>2</sup>	300 mg/m <sup>2</sup>	350 mg/m <sup>2</sup>	400 mg/m <sup>2</sup>
0.20	0.6 mL (50 mg)	0.75 mL (60 mg)	0.9 mL (70 mg)	1.0 mL (80 mg)
0.25	0.8 mL (62.5 mg)	0.9 mL (75 mg)	1.1 mL (87.5 mg)	1.25 mL (100 mg)
0.50	1.6 mL (125 mg)	1.9 mL (150 mg)	2.2 mL (175 mg)	2.5 mL (200 mg)
0.75	2.3 mL (187.5 mg)	2.8 mL (225 mg)	3.3 mL (262.5 mg)	3.75 mL (300 mg)
1.00	3.1 mL (250 mg)	3.75 mL (300 mg)	4.4 mL (350 mg)	5 mL (400 mg)
1.25	3.9 mL (312.5 mg)	4.7 mL (375 mg)	5.5 mL (437.5 mg)	6.25 mL (500 mg)
1.50	4.7 mL (375 mg)	5.6 mL (450 mg)	6.6 mL (525 mg)	7.5 mL (600 mg)

\* Body surface area can be calculated with the following equation:

$$BSA (m^2) = \sqrt{\frac{Ht (Cm) \times Wt (kg)}{3600}}$$

### General Dosing Guidelines

Patients should be aware that frequently observed adverse events, such as mild to moderate gastrointestinal disturbances and paraesthesias, may diminish as therapy is continued. In addition, patients initiating combination regimens with NORVIR and reverse transcriptase inhibitors may improve gastrointestinal tolerance by initiating NORVIR alone and subsequently adding reverse transcriptase inhibitors before completing two weeks of NORVIR monotherapy.

### HOW SUPPLIED

NORVIR (ritonavir capsules) soft gelatin are white capsules imprinted with the corporate **Abbott "A" logo**, 100 and the Abbo-Code DS, available in the following package size:

Bottles of 120 capsules each (NDC 0074-6633-22).

Bottles of 30 capsules each (NDC 0074-6633-30).

## Recommended Storage

Store soft gelatin capsules in the refrigerator between 36-46°F (2-8°C) until dispensed. Refrigeration of NORVIR soft gelatin capsules by the patient is recommended, but not required if used within 30 days and stored below 77°F (25°C). Protect from light. Avoid exposure to excessive heat.

NORVIR (ritonavir oral solution) is an orange-colored liquid, supplied in amber-colored, multi-dose bottles containing 600 mg ritonavir per 7.5 mL marked dosage cup (80 mg/mL) in the following size:

240 mL bottles (NDC 0074-1940-63).

## Recommended Storage

Store NORVIR oral solution at room temperature 68°F to 77°F (20°C to 25°C). Do not refrigerate. Shake well before each use. Use by product expiration date.

Product should be stored and dispensed in the original container.

Avoid exposure to excessive heat. Keep cap tightly closed.

## REFERENCES

1. Sewester CS. Calculations. In: Drug Facts and Comparisons. St. Louis, MO: J.B. Lippincott Co; January, 1997:xix.
2. Bertz RJ and Granneman GR. Use of *in vitro* and *in vivo* data to estimate the likelihood of metabolic pharmacokinetic interactions. *Clin Pharmacokinet* 1997; 32(3):210-258.

Abbott Laboratories

North Chicago, IL 60064, U.S.A.

Revised July 2007

## **NORVIR®**

(ritonavir capsules) Soft Gelatin

(ritonavir oral solution)

**ALERT: Find out about medicines that should NOT be taken with NORVIR.** Please also read the section "MEDICINES YOU SHOULD NOT TAKE WITH NORVIR."

### **Patient Information**

#### **NORVIR® (NOR - VEER)**

Generic name: ritonavir (rit-ON-uh-veer)

Please read this leaflet carefully before you start taking NORVIR. Also, read it each time you get your NORVIR prescription refilled, just in case something has changed.

Remember that this information does not take the place of careful discussions with your doctor when you start this medication and at check ups.

You should remain under a doctor's care when taking NORVIR and you should not change or stop treatment without first talking with your doctor.

You should tell your doctor about any medicine you are taking or planning to take because taking NORVIR with some medications can result in serious or life-threatening problems.

Talk to your doctor if you have any questions about NORVIR. Your doctor or pharmacist can also give you more information about NORVIR.

#### **What is NORVIR and How Does it work?**

NORVIR is in a class of medicines called the HIV protease (PRO-tee-ase) inhibitors.

NORVIR is used in combination with other anti-HIV medicines to treat people with human immunodeficiency virus (HIV) infection. NORVIR is for adults and for children age > 1 month and older.

HIV infection leads to the destruction of CD<sub>4</sub> (T) cells, which are important to the immune system. After a large number of CD<sub>4</sub> (T) cells have been destroyed, acquired immune deficiency syndrome (AIDS) develops.

NORVIR blocks HIV protease, a chemical which is needed for HIV to multiply. NORVIR reduces the amount of HIV and helps to increase the number of CD<sub>4</sub> (T) cells in your

blood. Patients who took NORVIR in clinical studies had significant reductions in both death and AIDS defining diseases; however NORVIR may not have these effects in all patients.

### **Does NORVIR Cure HIV or AIDS?**

NORVIR does not cure HIV infection or AIDS. The long-term effects of NORVIR are not known at this time. People taking NORVIR may still get opportunistic infections or other conditions that happen with HIV infection. Some of these conditions are pneumonia, herpes virus infections, and *Mycobacterium avium* complex (MAC) infections.

### **Does NORVIR Reduce the Risk of Passing HIV to Others?**

NORVIR does not reduce the risk of passing HIV to others through sexual contact or blood contamination. Continue to practice safe sex and do not use or share dirty needles.

### **How Should I Take NORVIR?**

- You should stay under a doctor's care when taking NORVIR. Do not change your treatment or stop treatment without first talking with your doctor.
- It is very important that you take NORVIR every day exactly as your doctor prescribed it.
- The usual dose for adults is six 100 mg capsules or 7.5 mL of the oral solution twice a day (morning and night), in combination with other anti-HIV medicines.
- The dosing of NORVIR may be different for you than for other patients. Follow the directions from your doctor, exactly as written on the label.
- Children from > 1 month to 21 years of age can also take NORVIR. The child's doctor will decide the right dose based on the child's height and weight.
- Take NORVIR with food if possible.
- NORVIR Oral Solution is peppermint/caramel flavored. You can take it alone, or may improve the taste by mixing it with 8 ounces of chocolate milk, Ensure®, or Advera®. NORVIR Oral Solution should be taken within 1 hour if mixed with these items. Ask your doctor, nurse or pharmacist about other ways to improve the taste of NORVIR Oral Solution.
- Do not change or stop taking NORVIR without first talking with your health care provider.

- When your NORVIR supply starts to run low, get more from your doctor or pharmacy. This is very important because the amount of virus in your blood may increase if the medicine is stopped for even a short time. The virus may develop resistance to NORVIR and become harder to treat.
- Be sure to set up a schedule and follow it carefully.
- Only take medicine that has been prescribed specifically for you. Do not give NORVIR to others or take medicine prescribed for someone else.

### **What Should I Do if I Miss a Dose of NORVIR?**

It is important that you do not miss any doses. If you miss a dose of NORVIR, take it as soon as possible and then take your next scheduled dose at its regular time. If it is almost time for your next dose, wait and take the next dose at the regular time. Do not double the next dose.

### **What Happens If I Take Too Much NORVIR?**

If you think that you took more than the prescribed dose of this medicine, contact your local poison control center or emergency room immediately.

As with all prescription medicines, NORVIR should be kept out of the reach of young children. NORVIR liquid contains a large amount of alcohol. If a toddler or young child accidentally drinks more than the recommended dose of NORVIR, it could make him/her sick from too much alcohol. Contact your local poison control center or emergency room immediately if this happens.

### **Who Should Not Take NORVIR?**

Together with your doctor, you need to decide whether NORVIR is right for you.

- Do not take NORVIR if you are taking certain medicines. These could cause serious side effects that could cause death. Before you take NORVIR, you must tell your doctor about all the medicines you are taking or are planning to take. These include other prescription and non-prescription medicines and herbal supplements.

For more information about medicines you should not take with NORVIR, please read the section "MEDICINES YOU SHOULD NOT TAKE WITH NORVIR."

- Do not take NORVIR if you have had a serious allergic reaction to NORVIR or any of its ingredients.



## Can I Take NORVIR With Other Medications?\*

NORVIR may interact with other medicines, including those you take without a prescription. You must tell your doctor about all the medicines you are taking or are planning to take.

### MEDICINES YOU SHOULD NOT TAKE WITH NORVIR.

- *Do not take the following medicines with NORVIR because they can cause serious or life-threatening problems such as irregular heartbeat, breathing difficulties, or excessive sleepiness:*
  - Cordarone® (amiodarone)
  - Ergotamine, ergonovine, methylergonovine, and dihydroergotamine such as Cafergot®, Migranal®, D.H.E 45®, and others
  - Halcion® (triazolam)
  - Hismanal® (astemizole)
  - Orap® (pimozide)
  - Propulsid® (cisapride)
  - Quinidine, also known as Quinaglute®, Cardioquin®, Quinidex®, and others
  - Rythmol® (propafenone)
  - Seldane® (terfenadine)
  - Tambocor® (flecainide)
  - Uroxatral® (alfuzosin hydrochloride)
  - Vascor® (bepridil)
  - Versed® (midazolam)
  - Vfend® (voriconazole)
  
- Do not take NORVIR with St. John's wort (*hypericum perforatum*), an herbal product sold as a dietary supplement or products containing St. John's wort. Talk with your doctor if you are taking or are planning to take St. John's wort. Taking St. John's wort may decrease NORVIR levels and lead to increased viral load and possible resistance to NORVIR or cross-resistance to other antiretroviral medicines.
  
- Do not take NORVIR with the cholesterol-lowering medicines Mevacor® (lovastatin) or Zocor® (simvastatin) because of possible serious reactions. There is also an increased risk of drug interactions between NORVIR and Lipitor® (atorvastatin); talk

to your doctor before you take any of these cholesterol-lowering medicines with NORVIR.

### **Medicines That May Require Dosage Adjustments**

It is possible that your doctor may need to increase or decrease the dose of other medicines when you are also taking NORVIR. Remember to tell your doctor all medicines you are taking or plan to take.

- The following medicines require dose reduction if taken with NORVIR:

If you are taking PDE5 inhibitors for erectile dysfunction including Viagra® (sildenafil), Cialis® (tadalafil), or Levitra® (vardenafil), your doctor may lower your dose of these medications.

**Before you take Viagra®, Cialis® or Levitra® with NORVIR, talk to your doctor about possible drug interactions and side effects. If you take these medications with NORVIR you may be at risk of side effects such as low blood pressure, visual changes, and penile erection lasting more than 4 hours. If an erection lasts longer than 4 hours, you should get medical help immediately to avoid permanent damage to your penis. Your doctor can explain these symptoms to you.**

- If you are taking Oral contraceptives ("the pill") or the contraceptive patch to prevent pregnancy, you should use a different type of contraception since NORVIR may reduce the effectiveness of oral or patch contraceptives.
- If you are taking Mycobutin® (rifabutin), your doctor will lower the dose of Mycobutin.
- **Other Special Considerations:**

NORVIR oral solution contains alcohol. Talk with your doctor if you are taking or planning to take metronidazole or disulfiram. Severe nausea and vomiting can occur.

- **If you are taking both didanosine (Videx) and NORVIR:**

Didanosine and NORVIR should be separated by at least 2.5 hours.

- Rifampin, also known as Rimactane®, Rifadin®, Rifater®, or Rifamate®, may reduce blood levels of NORVIR. Be sure to tell your doctor if you are taking rifampin.
- If you are taking or before you begin using inhaled Flonase® (fluticasone propionate), talk to your doctor about problems these two medicines may cause when taken together. Your doctor may choose not to keep you on inhaled Flonase®.

- Rifampin and saquinavir should not be taken with NORVIR. Be sure to tell your doctor if you are taking rifampin and saquinavir.

### **What Are the Possible Side Effects of NORVIR?**

- This list of side effects is **not** complete. If you have questions about side effects, ask your doctor, nurse, or pharmacist. You should report any new or continuing symptoms to your doctor right away. Your doctor may be able to help you manage these side effects.
- The most commonly reported side effects are: feeling weak/tired, nausea, vomiting, diarrhea, loss of appetite, abdominal pain, changes in taste, tingling feeling or numbness in hands or feet or around the lips, headache, and dizziness.
- Blood tests in patients taking NORVIR may show possible liver problems. People with liver disease such as Hepatitis B and Hepatitis C who take NORVIR may have worsening liver disease. Liver problems including rare cases of death have occurred in patients taking NORVIR. It is unclear if NORVIR caused these liver problems because some patients had other illnesses or were taking other medicines.
- Some patients taking NORVIR can develop serious problems with their pancreas (pancreatitis) which may cause death. Tell your doctor if you have nausea, vomiting, or abdominal pain. These may be signs of pancreatitis.
- Some patients have large increases in triglycerides and cholesterol. The long-term chance of getting complications such as heart attacks or stroke due to increases in triglycerides and cholesterol caused by protease inhibitors is not known at this time.
- Diabetes and high blood sugar (hyperglycemia) have occurred in patients taking protease inhibitors. Some patients had diabetes before starting protease inhibitors, others did not. Some patients need changes in their diabetes medication. Others needed new diabetes medication.
- Changes in body fat have been seen in some patients taking antiretroviral therapy. These changes may include increased amount of fat in the upper back and neck ("buffalo hump"), breast and around the trunk. Loss of fat from the legs, arms and face may also happen. The cause and long term health effects of these conditions are not known at this time.
- Some patients with hemophilia have increased bleeding with protease inhibitors.

- Allergic reactions ranging from mild to severe have occurred in patients taking NORVIR.

There have been other side effects noted in patients receiving NORVIR; however, these side effects may have been due to other medicines that patients were taking or to the illness itself. Some of these side effects can be serious. If you have questions about side effects, ask your doctor, nurse, or pharmacist. You should report any new or persistent symptoms to your doctor immediately.

### **What Should I Tell My Doctor Before Taking NORVIR?**

- *If you are pregnant or planning to become pregnant.* The effects of NORVIR on pregnant women or their unborn babies are not known.
- *If you are breast-feeding.* Do not breast-feed if you are taking NORVIR. You should not breast-feed if you have HIV. If you are a woman who has or will have a baby, talk with your doctor about the best way to feed your baby. You should be aware that if your baby does not already have HIV, there is a chance that HIV can be transmitted through breast-feeding.
- *If you have liver problems.* If you have liver problems or are infected with Hepatitis B or Hepatitis C, you should tell your doctor before taking NORVIR.
- *If you have diabetes.* Some people taking protease inhibitors develop new or more serious diabetes or high blood sugar. Be sure to tell your doctor if you have diabetes or an increase in thirst and/or frequent urination.
- *If you have hemophilia.* Some people with hemophilia have had increased bleeding. It is not known whether the protease inhibitors caused these problems. Be sure to tell your doctor if you have hemophilia types A and B.

### **How Do I Store NORVIR?**

- Keep NORVIR and all other medicines out of the reach of children.
- Store NORVIR Oral Solution at room temperature. Do not refrigerate NORVIR Oral Solution. Avoid exposing NORVIR Oral Solution to excessive heat or cold.
- Refrigeration of NORVIR soft gelatin capsules by the patient is recommended, but not required if used within 30 days and stored below 77°F (25°C). Avoid exposing NORVIR soft gelatin capsules to excessive heat or cold.

- Store NORVIR soft gelatin capsules and NORVIR Oral Solution in the original container.
- Shake NORVIR Oral Solution well before each use.
- Use NORVIR soft gelatin capsules and NORVIR Oral Solution by the expiration date on the bottle.

Do not keep medicine that is out of date or that you no longer need. Be sure that if you throw any medicine away, it is out of the reach of children.

### **General Advice About Prescription Medicines**

Talk to your doctor or other health care provider if you have any questions or concerns about this medicine or your condition. Medicines are sometimes prescribed for purposes other than those listed in a Patient Information Leaflet. Your doctor or pharmacist can give you information about this medicine that was written for health care professionals. Do not use this medicine for a condition for which it was not prescribed. Do not share this medicine with other people.

\* The brands listed are trademarks of their respective owners and are not trademarks of Abbott Laboratories. The makers of these brands are not affiliated with and do not endorse Abbott Laboratories or its products.

Abbott Laboratories

North Chicago, IL 60064, U.S.A.