

PREOPERATIVE THERAPY IN INVASIVE BREAST CANCER

Reviewing the State of the Science and Exploring New Research Directions

**When to consider mid-course
changes of therapy based on
early response?**

*Gunter von Minckwitz, M.D., Ph.D.,
German Breast Group*



Topics

Early response:

- As predictor of pathologic response
- As predictor of long-term outcome
- As a decision aid to switch therapy
- To identify patients who might (not) benefit from a switch



Royal Marsden Hospital
n = 198 pts. with operable b.c.

Predictors of pCR/pINV univariate
after a variety of therapies p-value

T1/T2 tumors	0.004
Young age	0.008
Response after 2 nd cycle	0.001*

*best predictor in multi-variate analysis



Prediction of pCR by response evaluation after 2-4 cycles

Study	Treatment	N pts.		pCR (%)	
		R	NR	R	NR
• GeparDuo	ddAT	350	348	17	3
• GeparDuo	AC-T	300	148	17	7
• GeparTrio	TAC	1390	622	21	5
Total		2040	1118	19.6	4.6
		(65%)	(35%)	p<0.001	

R=Responder (cCR or cPR); NR=Non-responder (cNC); dd=dose-dense; T=Docetaxel



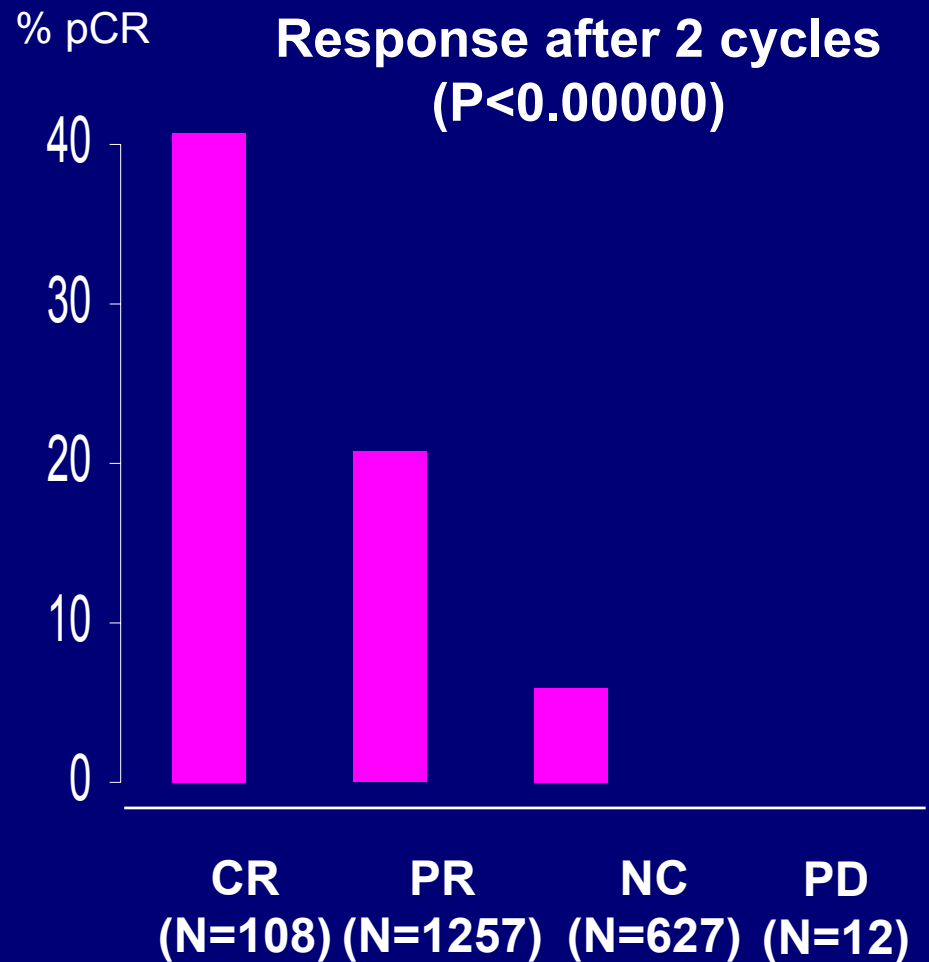
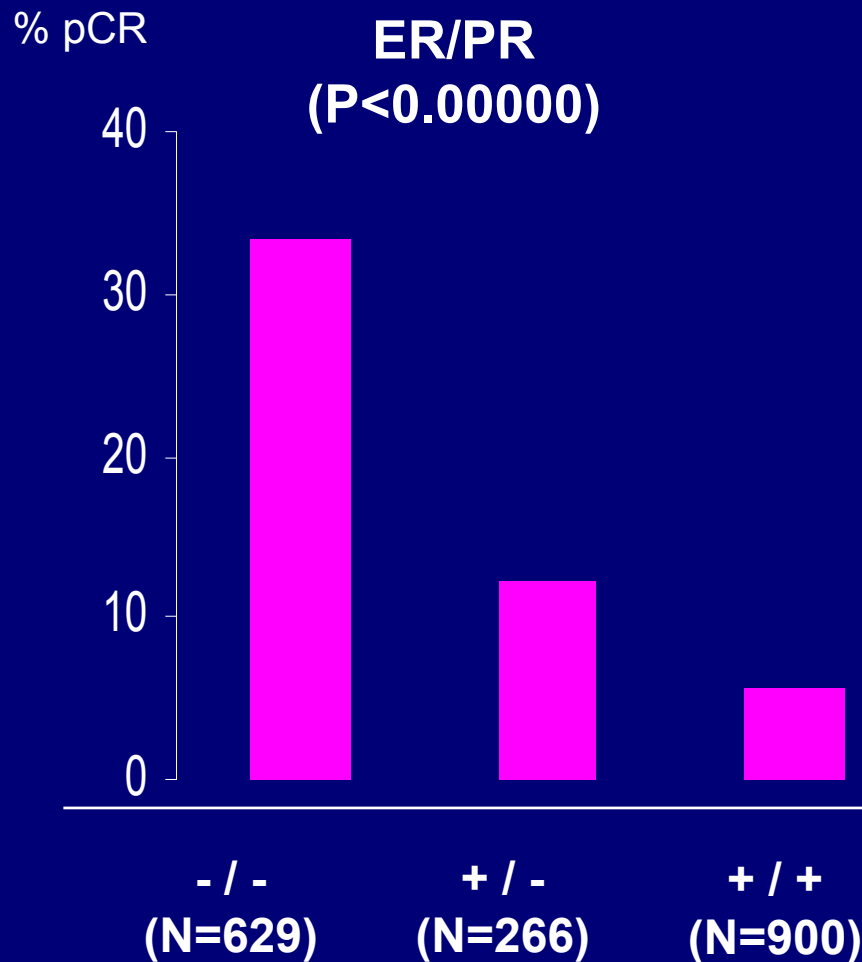
Multivariate analysis for pCR in GePAR Trio (N=2190)

group with highest chance for pathCR	All	Odds ratio*	
		Responder	Non-Responder
< 40 yrs	2.0	-	6.3
High grade ductal	2.7	2.2	-
ER/PR neg	2.2	2.1	-
Complete Response after 2 cycles	3.7	4.3	2.5
	10.4	2.3	n.a.

* Odds ration against group with lowest pCR rate



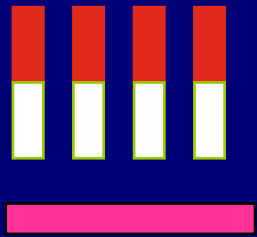
Predictors of pCR in GeparTrio





GeparQuattro

N=1500

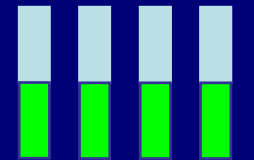


R

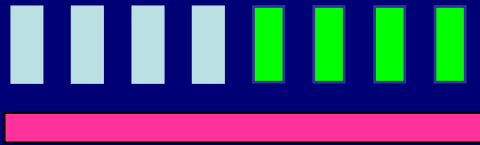
Stratified acc. to Early Response



OP



OP



OP



- Epirubicin 90 mg/m²
- Cyclophosphamide 600 mg/m²
- Docetaxel 100 mg/m² (A) 75 mg/m² (B,C)
- Capecitabine 1800 mg/m²
- If Her2 pos: Trastuzumab 6 mg/kg q3w 1y
- If endocrine responsive Tam/Als



Topics

Early response:

- As predictor of pathologic response
- **As predictor of long-term outcome**
- As a decision aid to switch therapy
- To identify patients who might (not) benefit from a switch



Long Term Prognosis according to Early Response to 4xAC(+Tam)

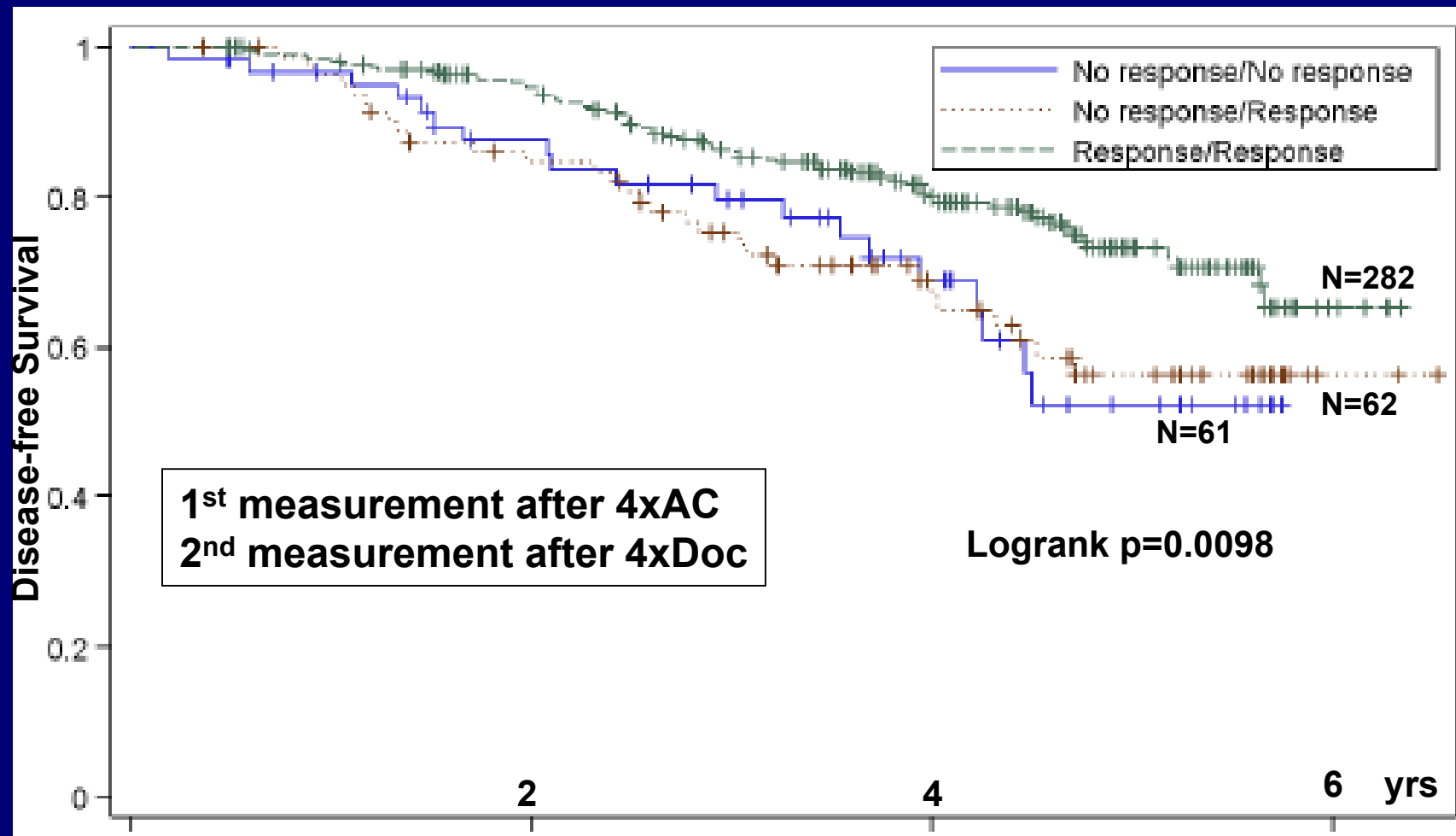
Response to 4x AC(+Tam)	N Pts.	Event rate at 78 months (after nil or Docetaxelx4)
cCR	906	24.7%
cPR	1079	35.1%
cNC	324	49.1%

p<0.0001



GeparDuo

425 Pts. receiving AC-Doc



Topics

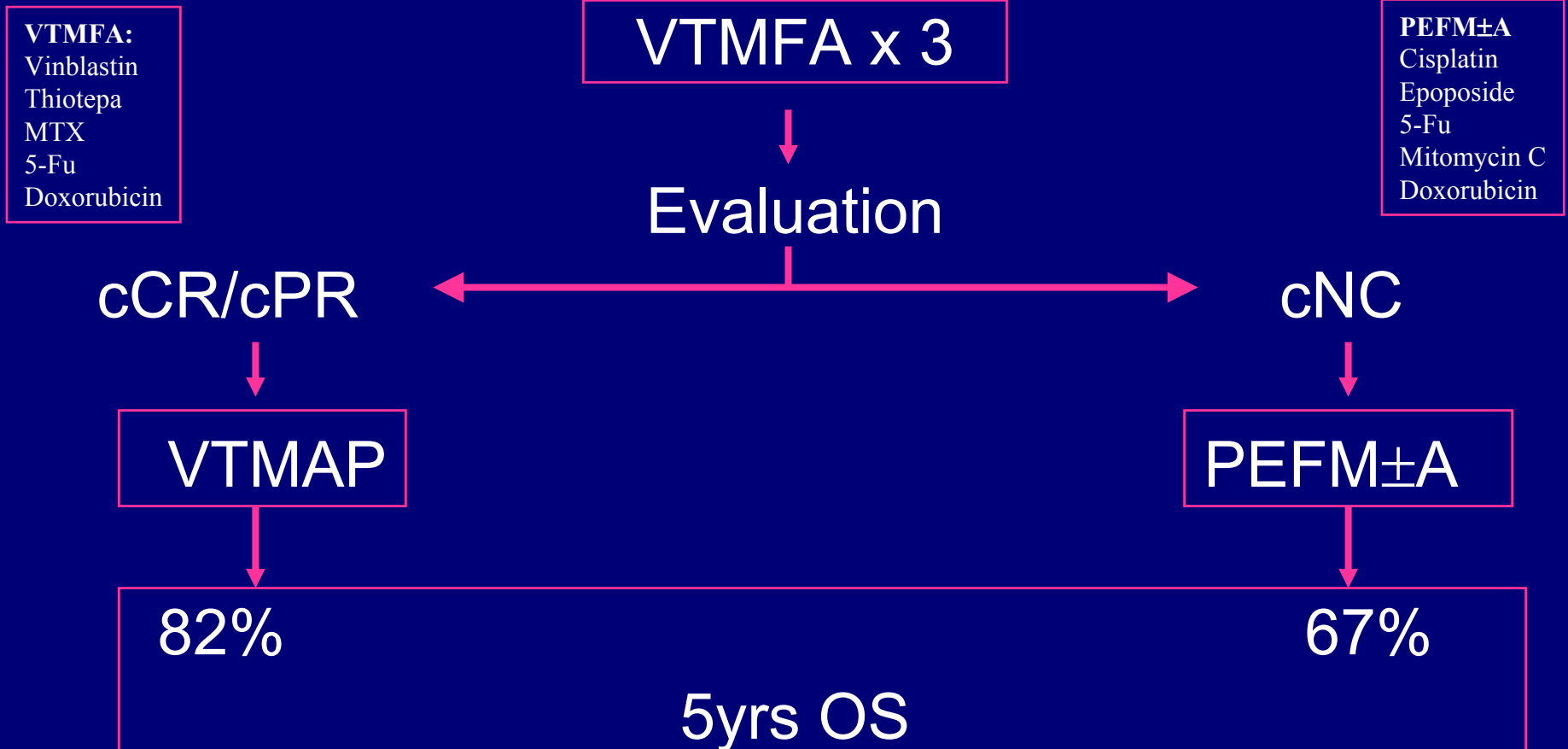
Early response:

- As predictor of pathologic response
- As predictor of long-term outcome
- **As a decision aid to switch therapy**
- To identify patients who might (not) benefit from a switch



02SR 86 French Phase II Trial

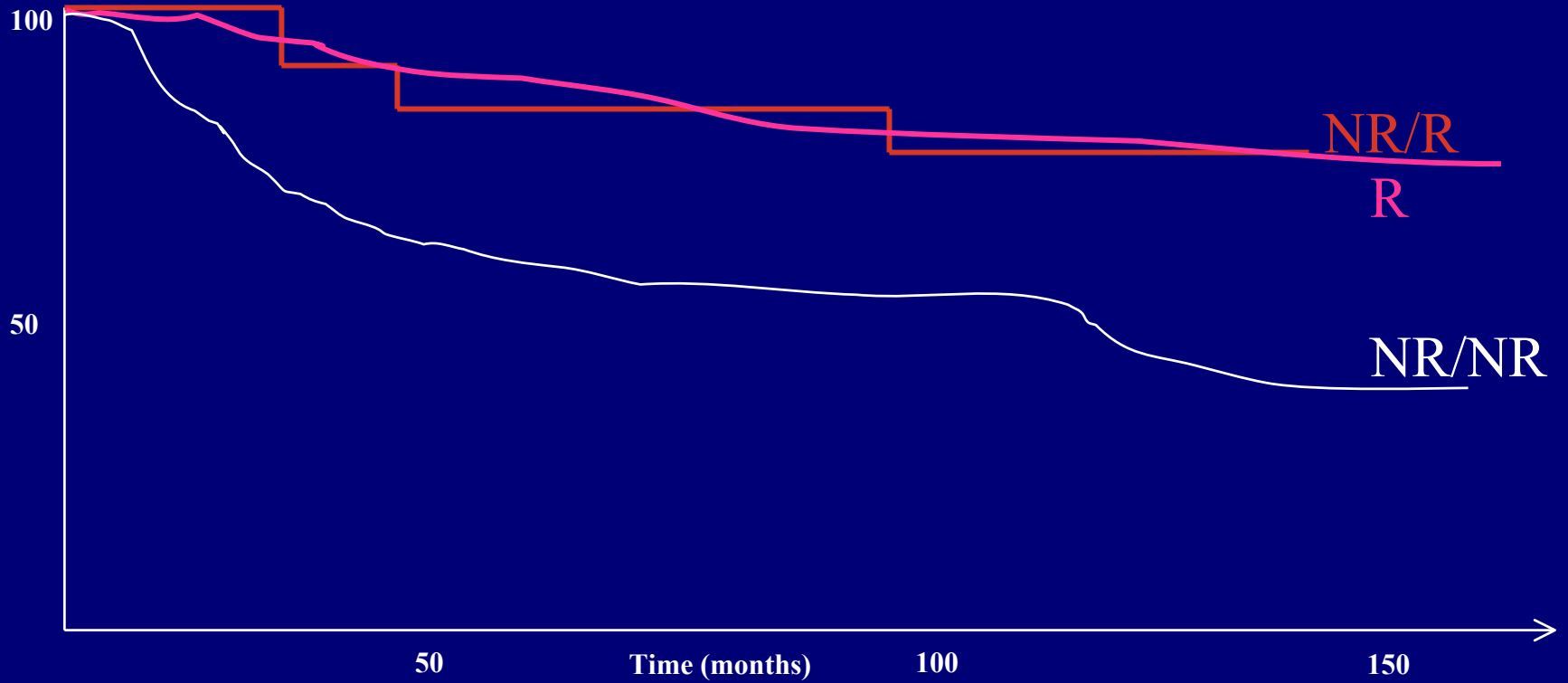
n = 272 Patients Stage I-III B



02SR 86 French Phase II Trial

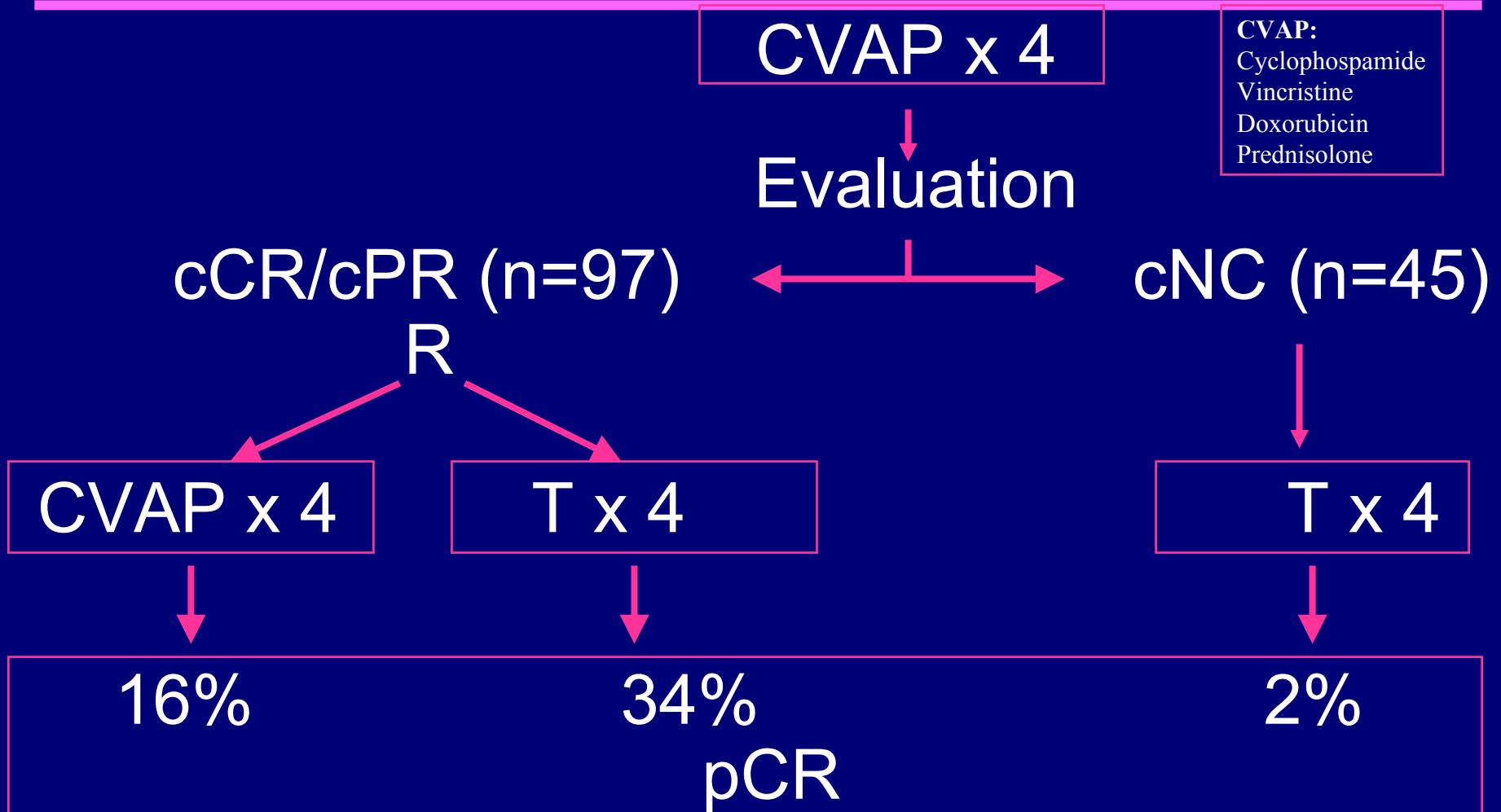
n = 272 Patients Stage I-III B

survival

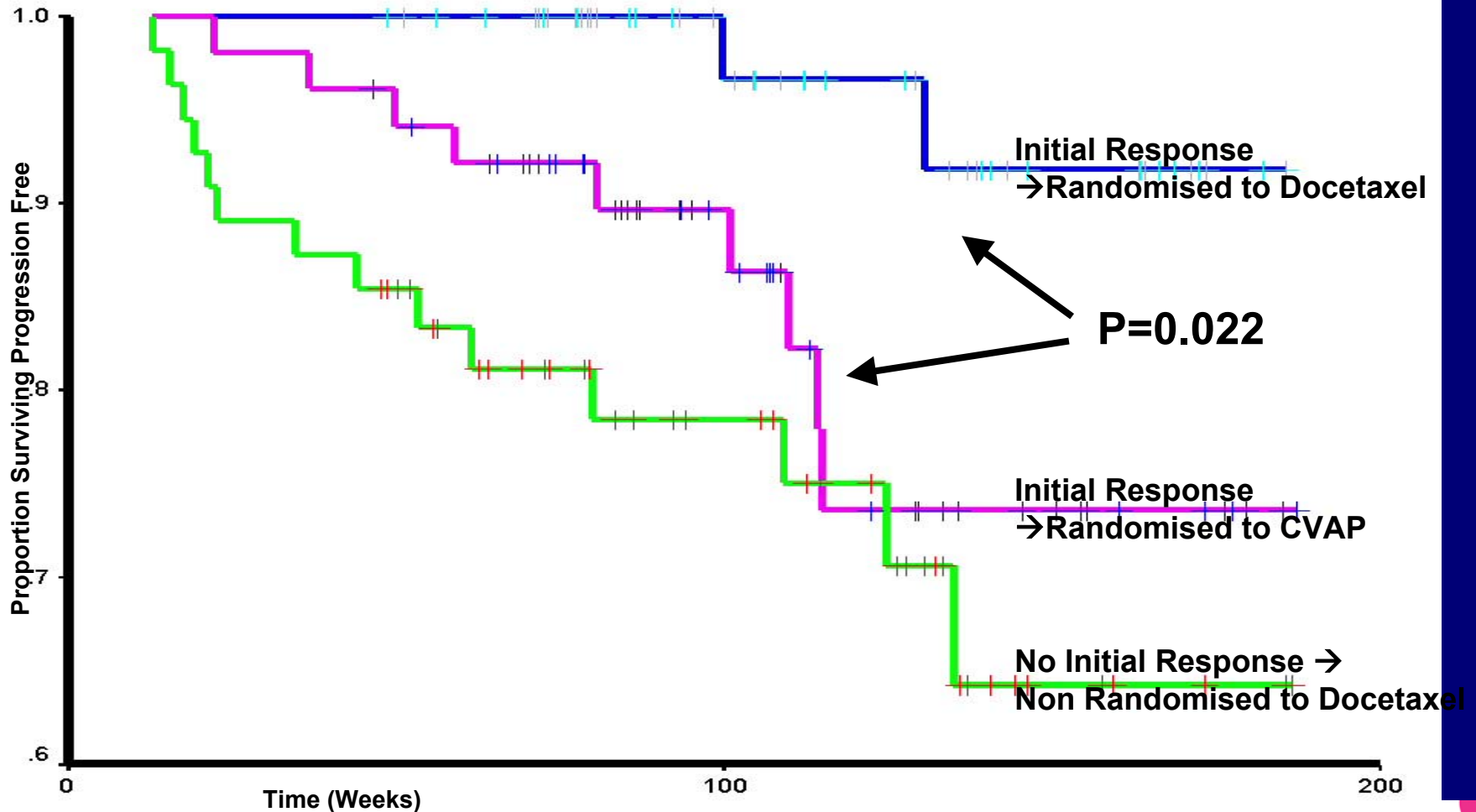


Aberdeen Trial

n = 133 Patients T>3cm or IIB

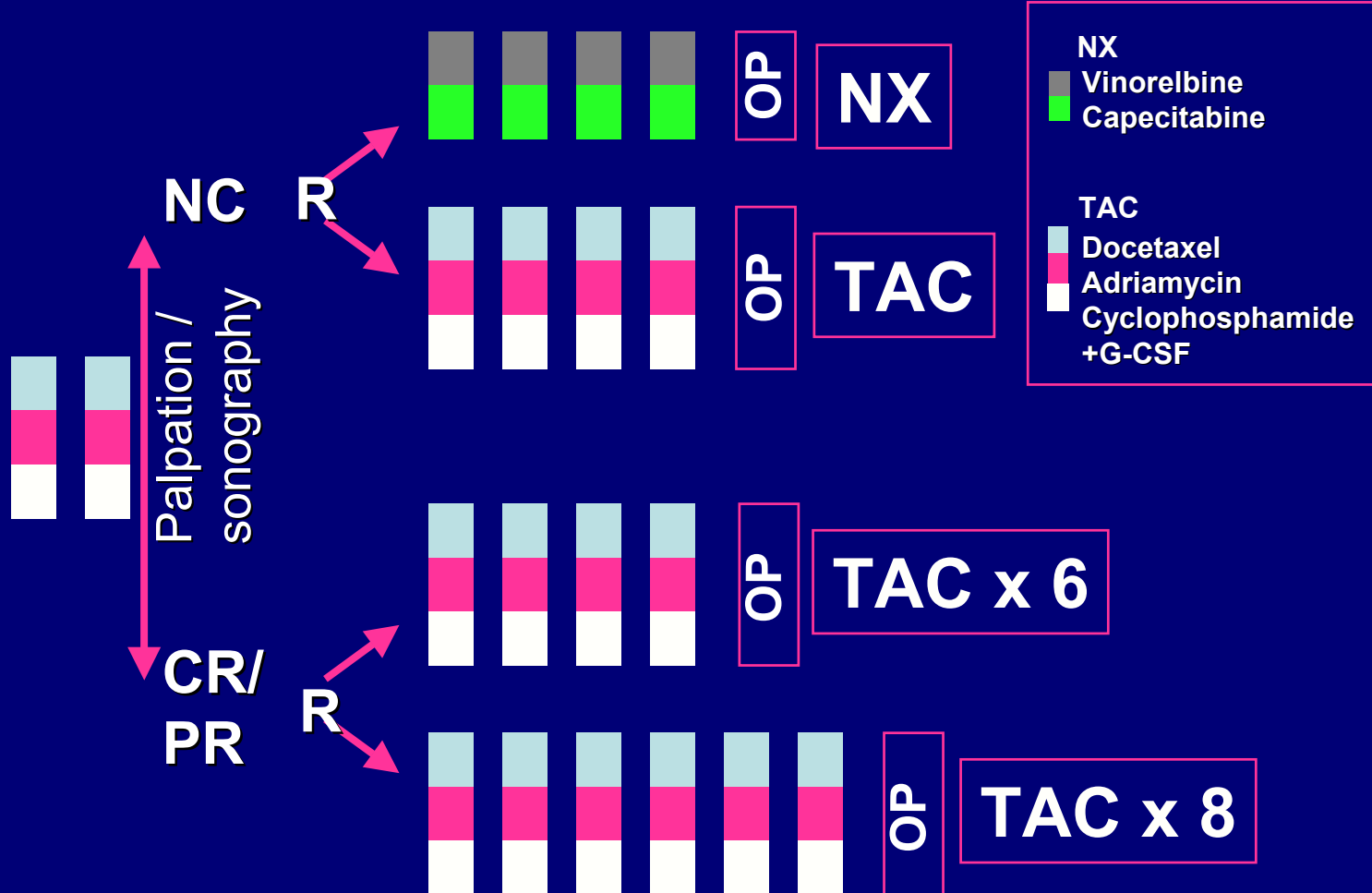


Progression-free Survival in the Aberdeen-Study (median F-up: 104 wks)

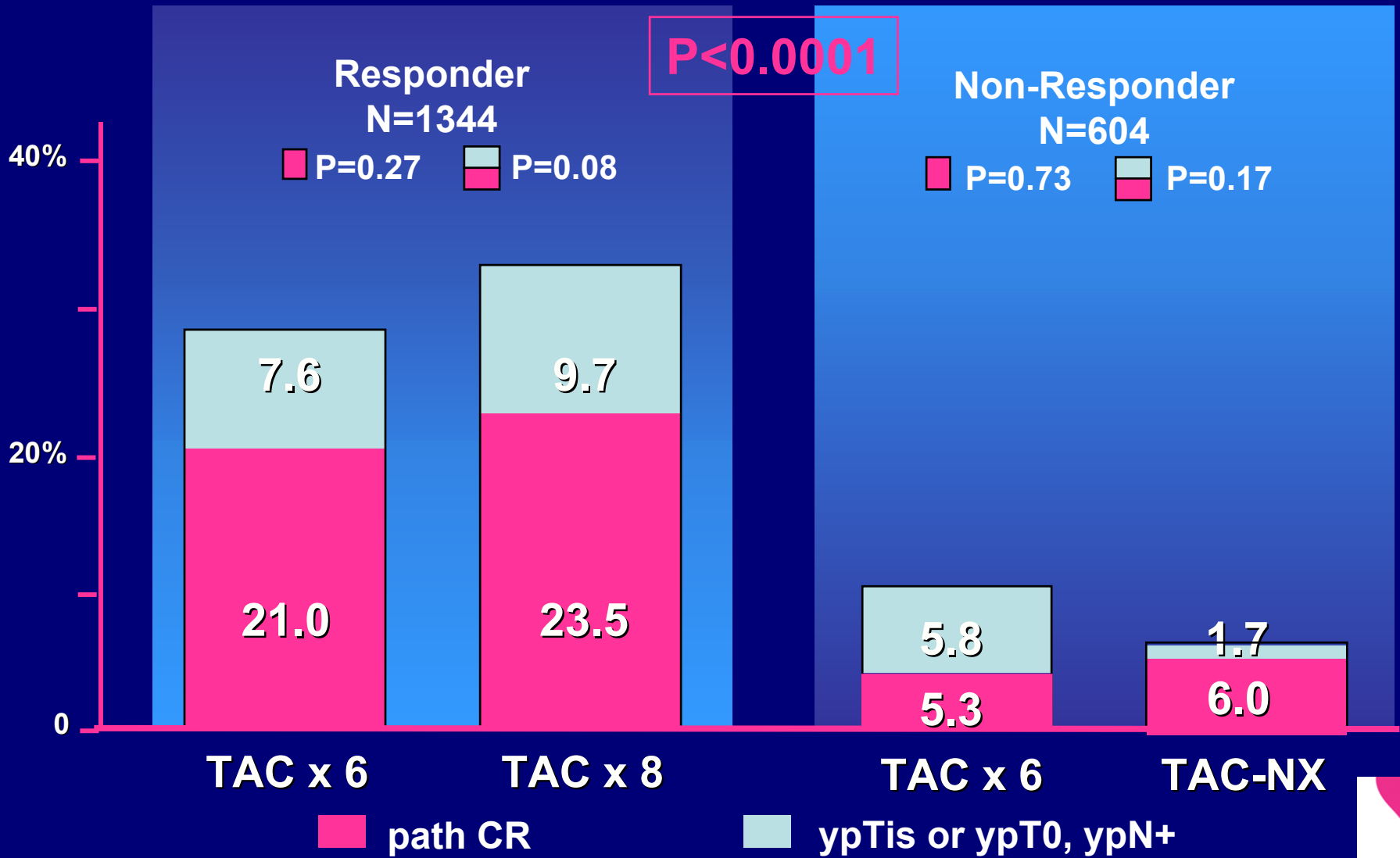


Gepartrio

Core biopsy:
uni/bilateral
cT2-4
cN0-3
size ≥ 2 cm



pCR Rates in GeparTrio Study



Topics

Early response:

- As predictor of pathologic response
- As predictor of long-term outcome
- As a decision aid to switch therapy
- To identify patients who might (not) benefit from a switch



Predictive Factors in GeparTrio for pCR by Therapy

%path CR	Responder		Non-Responder	
	TACx6	TACx8	TACx6	TAC/Nx
ER+ and PR+	11.7	18.3 P=0.03	9.5	2.5 P=0.01
Partial Response after 2 cycles	25.5	31.4 P=0.02		n.a.



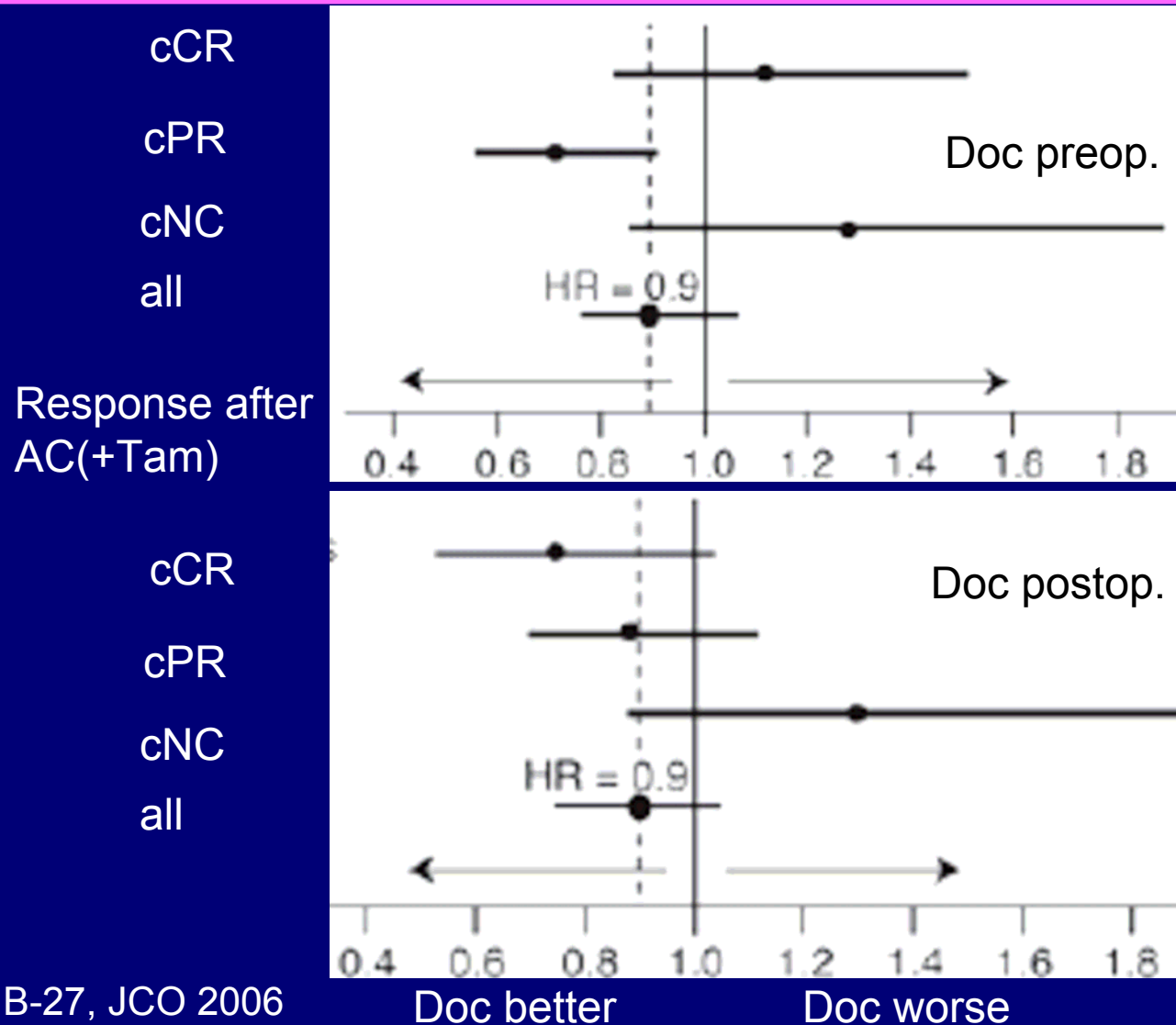
Adding a Taxan to FAC

(Experience from 7 MD Anderson Trials)

N=1079	pCR (%)	
	- Taxane	+ Taxane
ER neg	15	29
ER pos	2	9

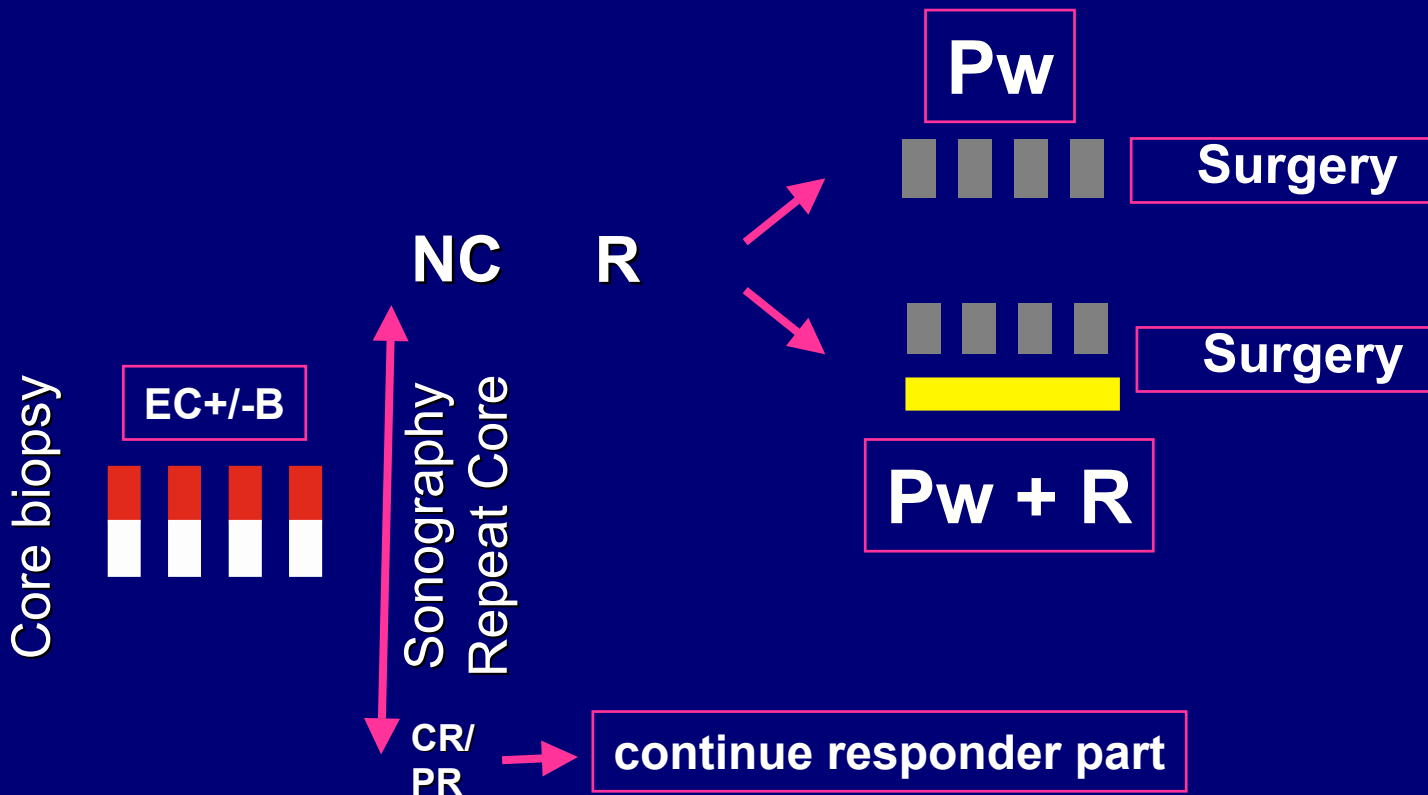


Patients with a Partial Response after AC might benefit from Preop Doc





Her2 negative – Non-Responding Patients



N=540 Her 2 neg. Non-responder

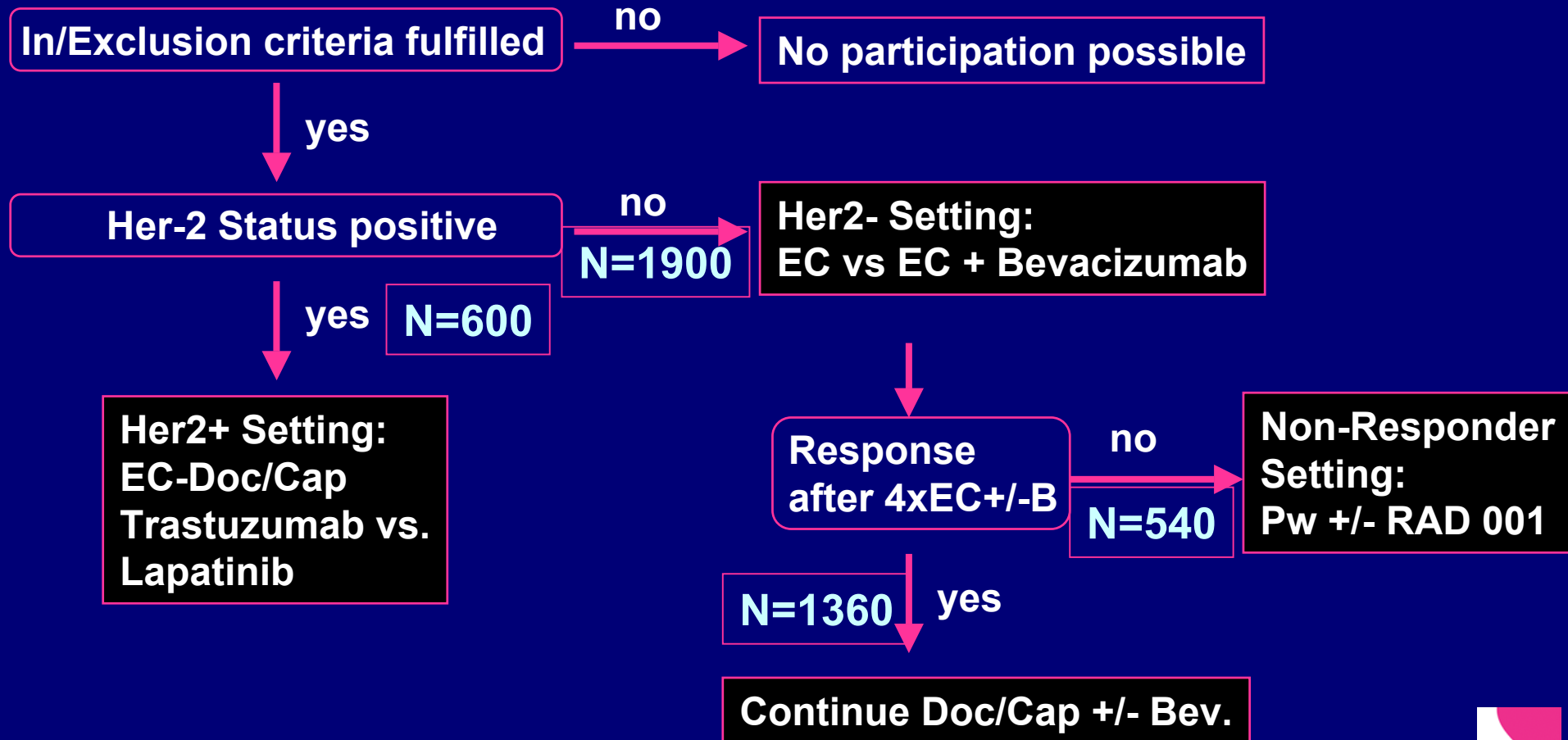
Pw = weekly Paclitaxel
R = Rad 001





Decision Tree

N=2500



Conclusion

- Early response is an independent predictor of pCR and long term outcome (CR>PR>NC>PD).
- Benefit of a late response after switching of treatment is unclear
- Patients with an early **cCR** might not need further treatment intensification
- Patients with an early **cPR** (incomplete chemoresistance due to e.g. ER+) might benefit from more intense treatment.
- Patients with an early **cNC or cPD** are at high medical need for new treatment options.

