

APPENDIX A5: BUBBLE PLOTS OF SUMMER SHRIMP SURVEY CATCHES

Northern Shrimp Summer Survey catches from 1985 – 2006 (two year intervals). Strata 1, 3, 5, 6, 7, and 8 are used in the assessment.

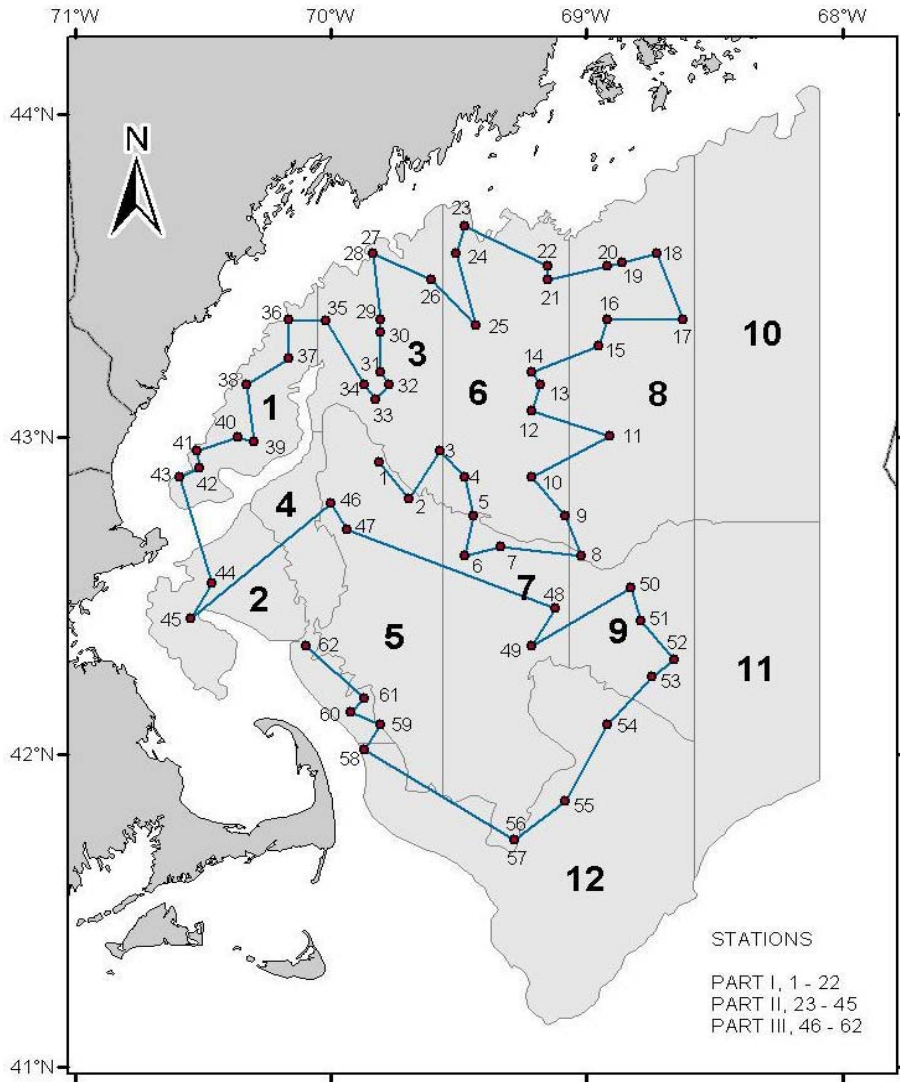
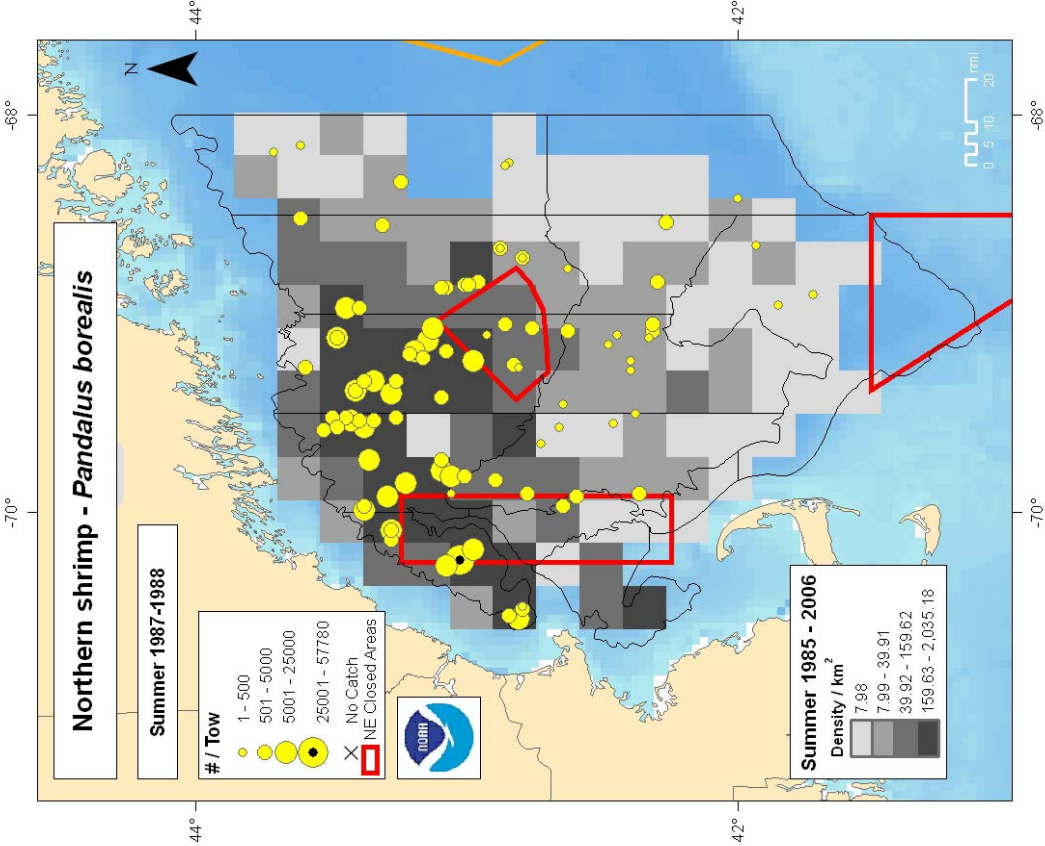
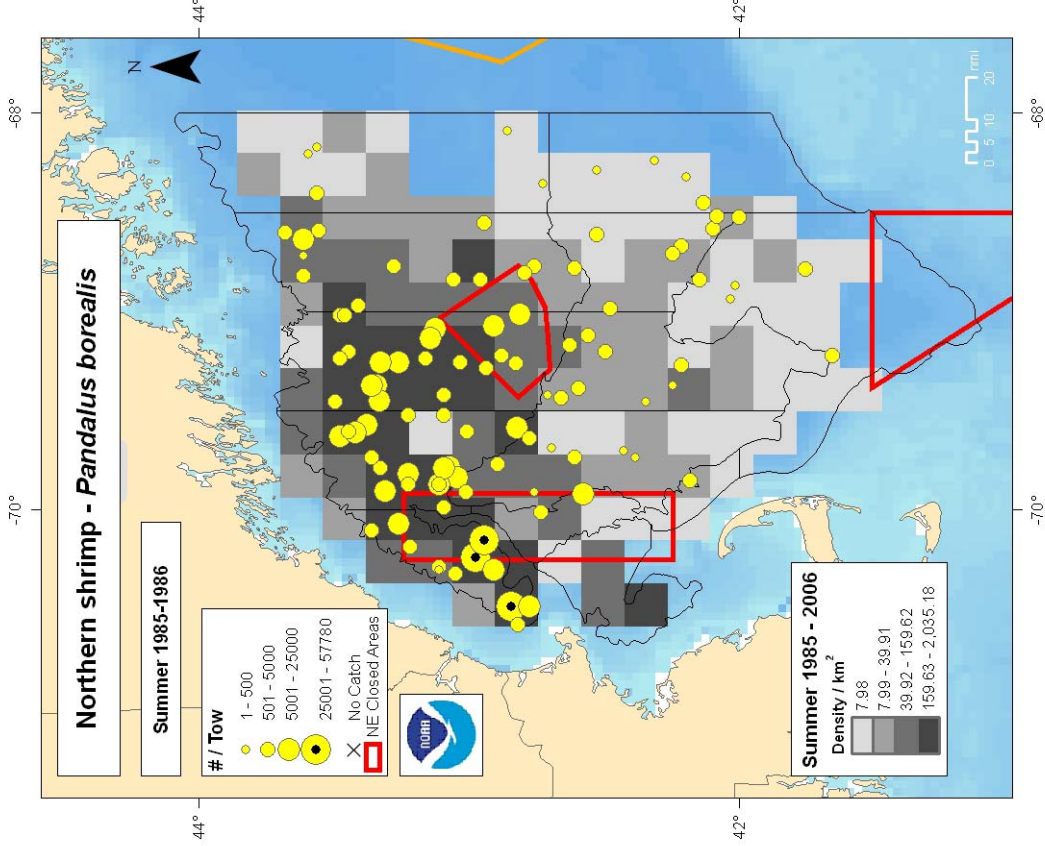


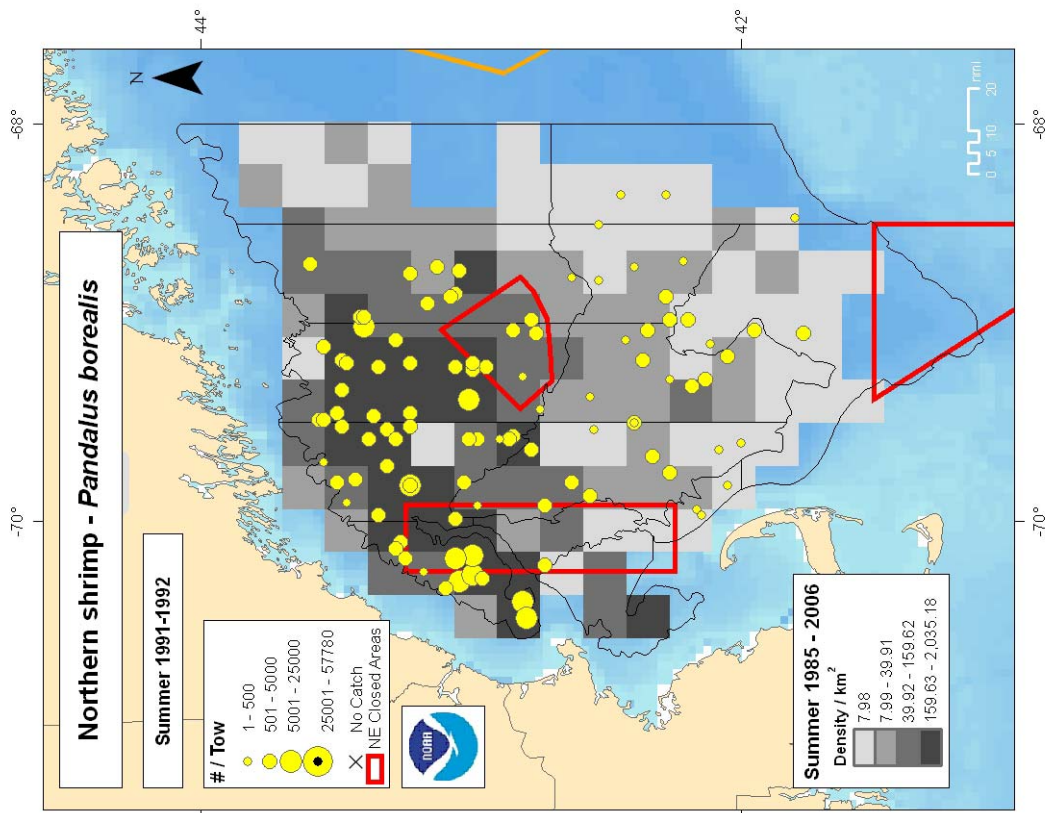
Figure 2. Trawl hauls made from the R/V GLORIA MICHELLE, during National Marine Fisheries Service, Northeast Fisheries Science Center summer northern shrimp survey (03 - 07), July 27 - August 8, 2003.



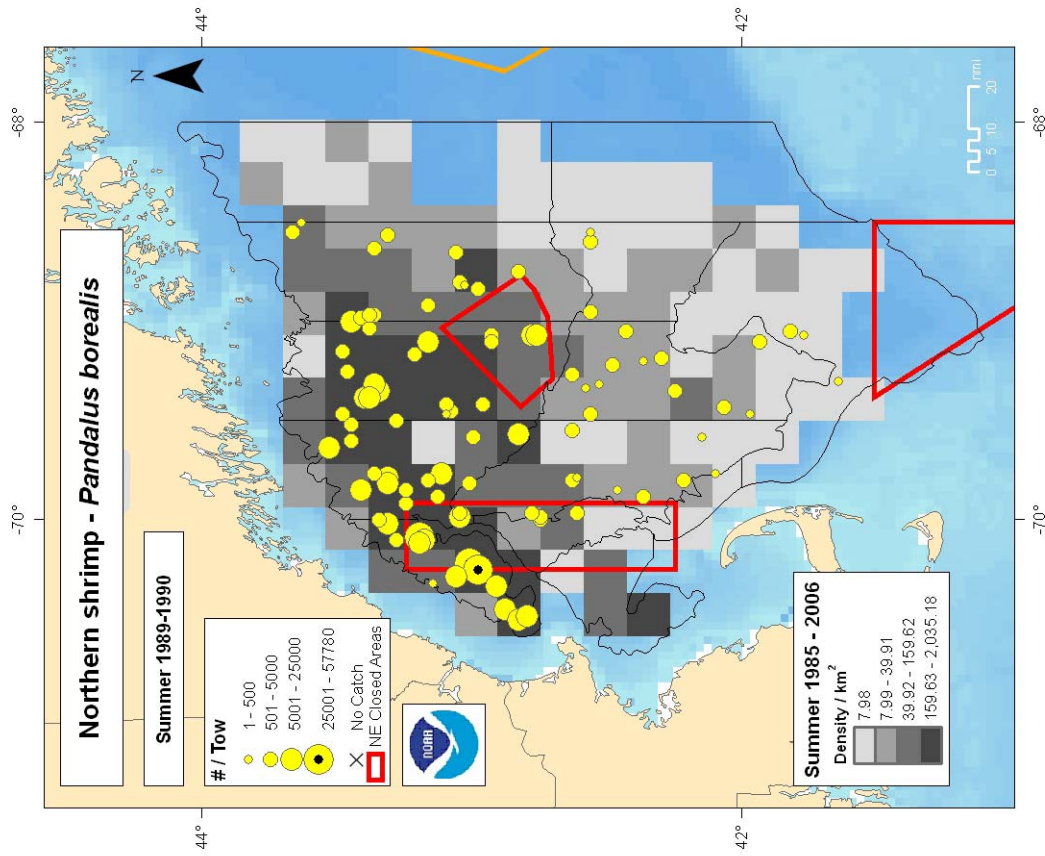
Relative species abundance and distribution from NEFSC bottom trawl survey by time block and relative species density for the full time series.



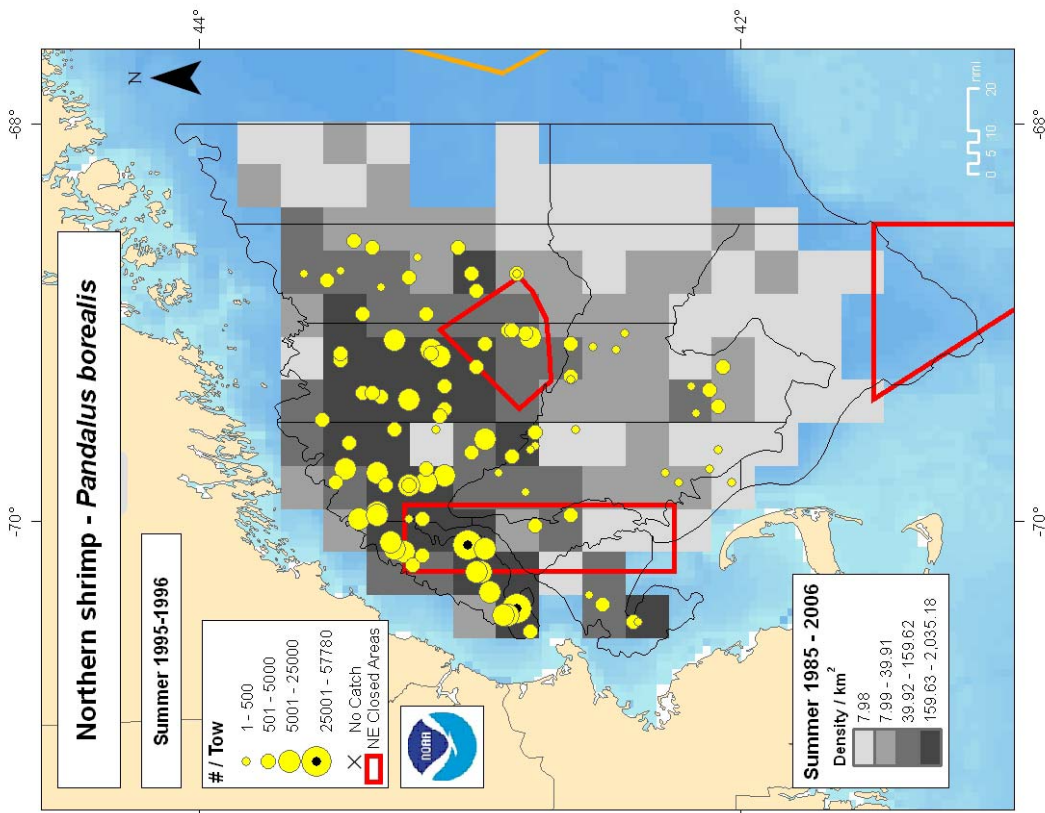
Relative species abundance and distribution from NEFSC bottom trawl survey by time block and relative species density for the full time series.



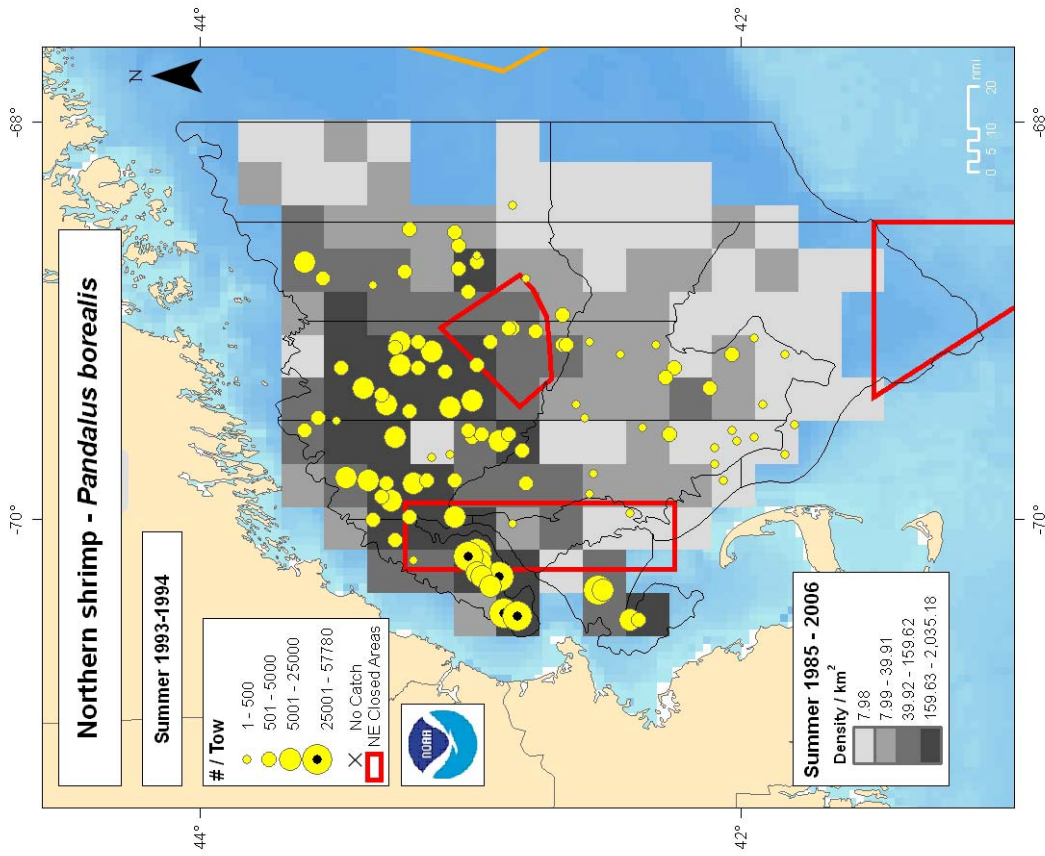
Relative species abundance and distribution from NEFSC bottom trawl survey by time block and relative species density for the full time series.



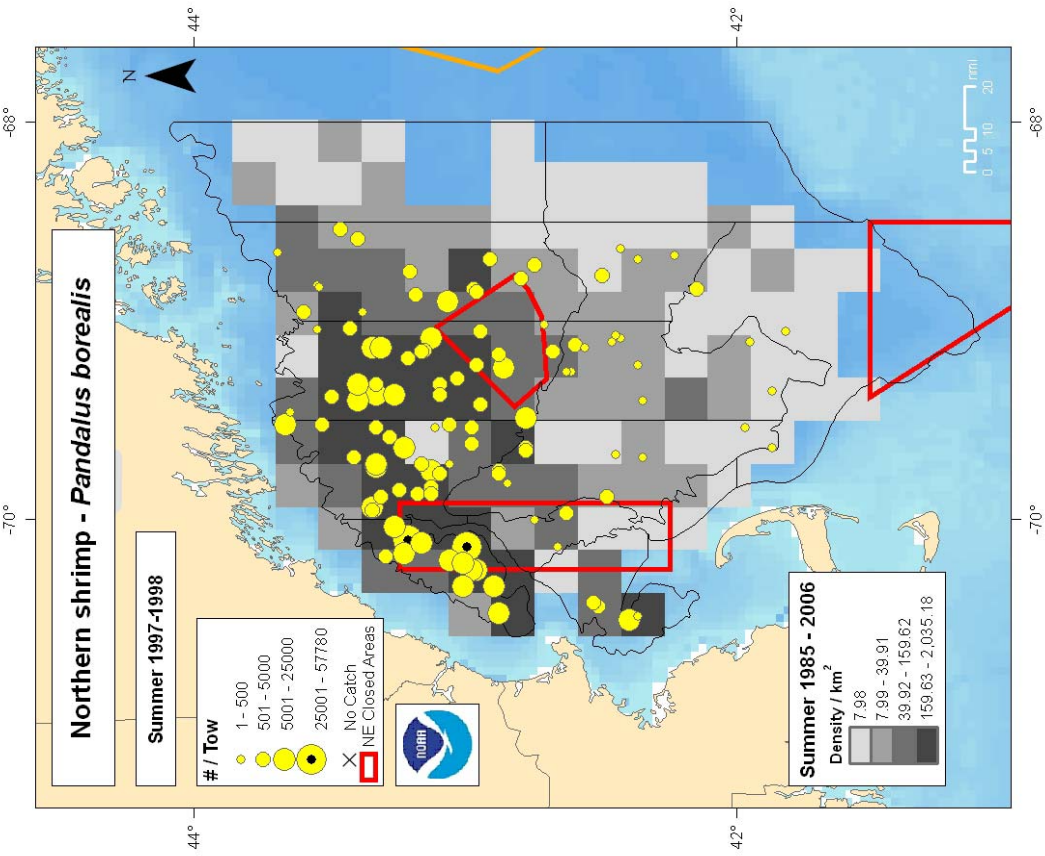
Relative species abundance and distribution from NEFSC bottom trawl survey by time block and relative species density for the full time series.



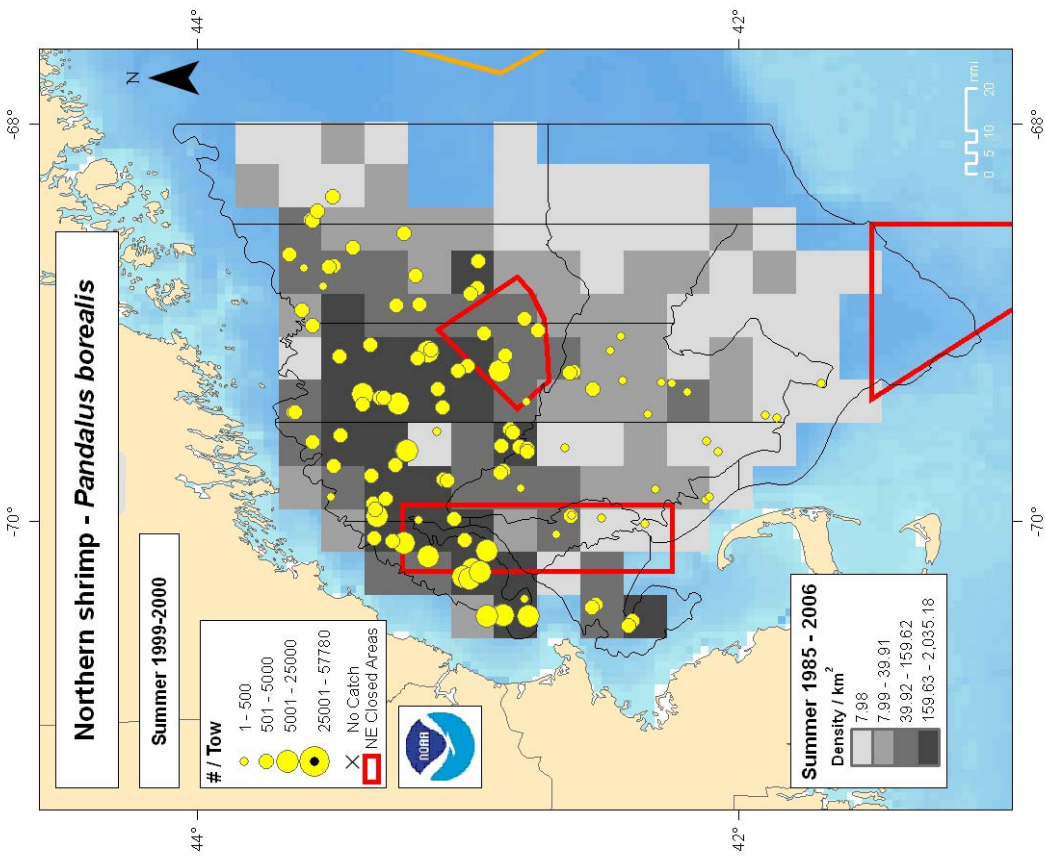
Relative species abundance and distribution from NEFSC bottom trawl survey by time block and relative species density for the full time series.



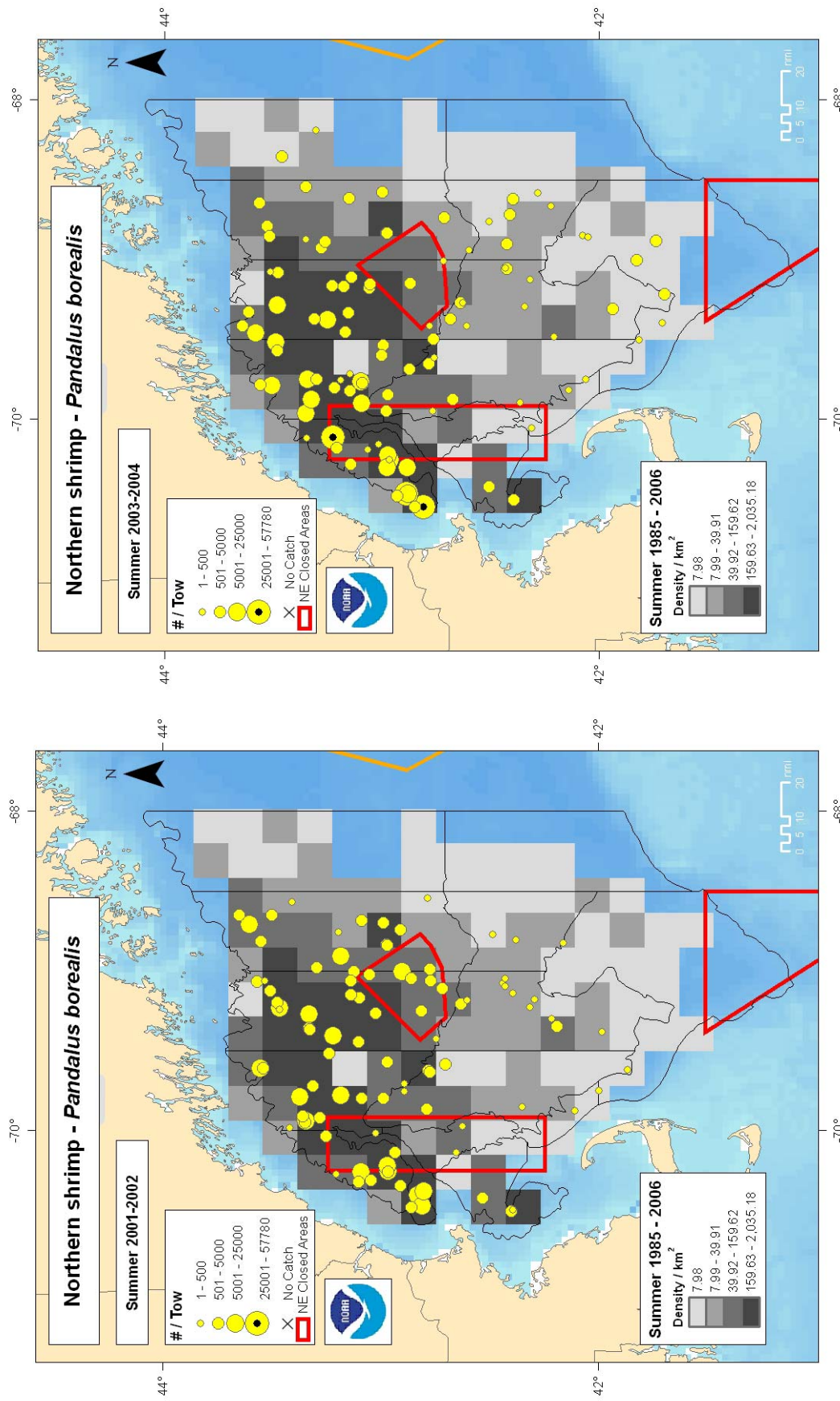
Relative species abundance and distribution from NEFSC bottom trawl survey by time block and relative species density for the full time series.



Relative species abundance and distribution from NEFSC bottom trawl survey by time block and relative species density for the full time series.

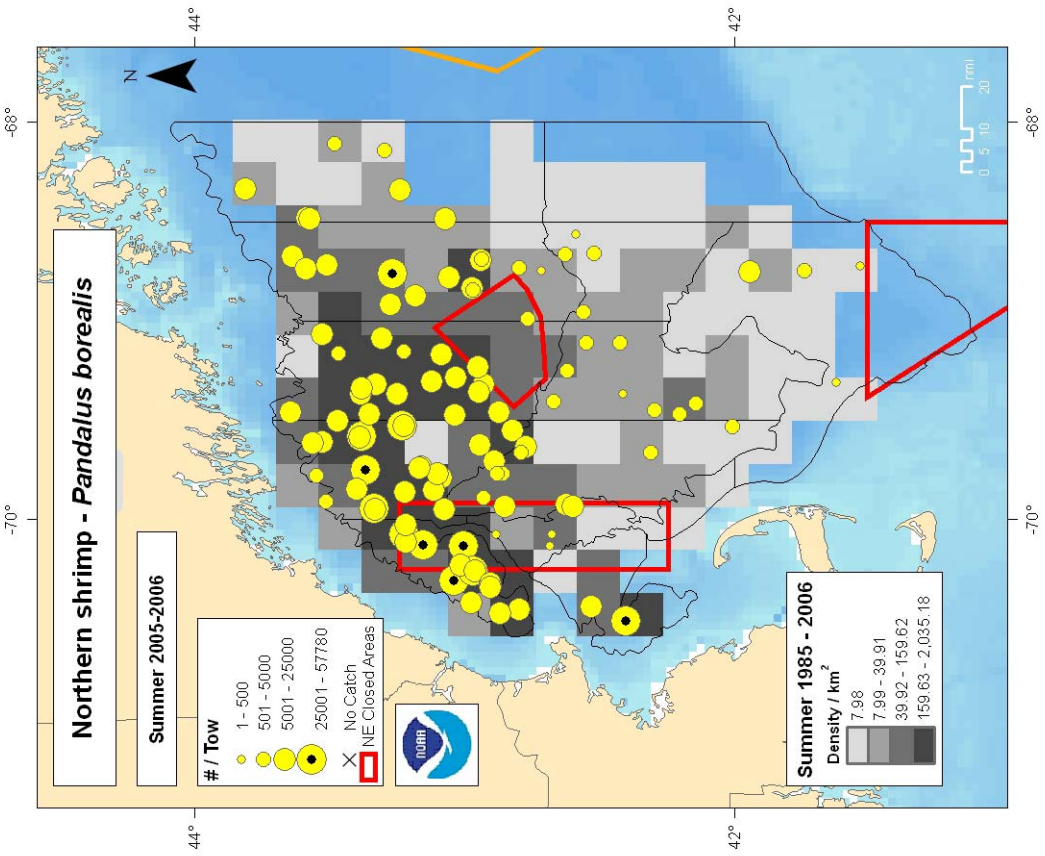


Relative species abundance and distribution from NEFSC bottom trawl survey by time block and relative species density for the full time series.



Relative species abundance and distribution from NEFSC bottom trawl survey by time block and relative species density for the full time series.

Relative species abundance and distribution from NEFSC bottom trawl survey by time block and relative species density for the full time series.



Relative species abundance and distribution from NEFSC bottom trawl survey by time block and relative species density for the full time series.