



# Sampling Strategy Will Provide Details on Arsenic

**South Minneapolis Neighborhood Soil Contamination Site**  
Minneapolis, Minn. August 2005

## For additional information

To learn more about the sampling project, or for other questions regarding the cleanup of arsenic in Minneapolis home, contact one of the following EPA team members:

Cheryl Allen  
Community Involvement  
Coordinator  
EPA Region 5  
(312) 353- 6196  
allen.cheryl@epa.gov

Tim Prendiville  
Remedial Project Manager  
EPA Region 5  
(312) 886-5122  
prendiville.timothy@epa.gov

Call EPA Region 5 toll-free,  
9 a.m. to 4:30 p.m.,  
(800) 621- 8431

Robert Anderson  
Project Manager  
Minnesota Department of  
Agriculture  
(651) 297-5731  
robert.anderson@state.mn.us

You may see documents related to the South Minneapolis Neighborhood Soil Contamination site, and the CMC Heartland Lite Yard Superfund site at:

Green Institute  
2801 21<sup>st</sup> Ave., S., Suite 100  
Minneapolis

Minneapolis Public Library  
East Lake Branch  
2727 E. Lake St.  
Minneapolis

Sustainable Resources Association  
1916 2nd Ave. S  
Minneapolis

A three-phase approach to additional research on arsenic contamination in several Minneapolis neighborhoods is set to begin soon. This new round of soil sampling will help U.S. Environmental Protection Agency Region 5 learn more about how to deal effectively with the problem of arsenic contamination.

Soil samples taken at homes in the East Phillips neighborhood have shown levels of arsenic that EPA considers hazardous. Contaminated soil has already been removed from about 30 homes near the CMC Heartland Lite Yard Superfund site. EPA believes the arsenic got into residential yards when dust from the CMC operation blew into those yards over a period of 30 years.

Now EPA wants to take more soil samples to determine the extent of the arsenic contamination. The samples will help EPA determine specific areas where arsenic might pose an immediate threat to residents. Those areas would be cleaned up as soon as possible. The project will also help EPA decide on the best way to clean up the arsenic quickly.

Another part of this project is looking for contamination that might be deep underground. This would not pose an immediate threat to public health, but might need to be removed at a later date.

## Phase One

The first phase of this new effort involves taking soil samples in about 60 locations, most of which are east of Hiawatha Avenue. The homes where samples will be taken lie within a radius of slightly less than a mile from the CMC site. (See the map on Page 2 for approximate sampling locations.)

This phase is designed to identify the general direction in which the wind blew arsenic-containing dust during the time CMC Heartland Lite Yard was operating. Sampling locations have already been identified, and EPA is notifying homeowners individually about the soil sampling.

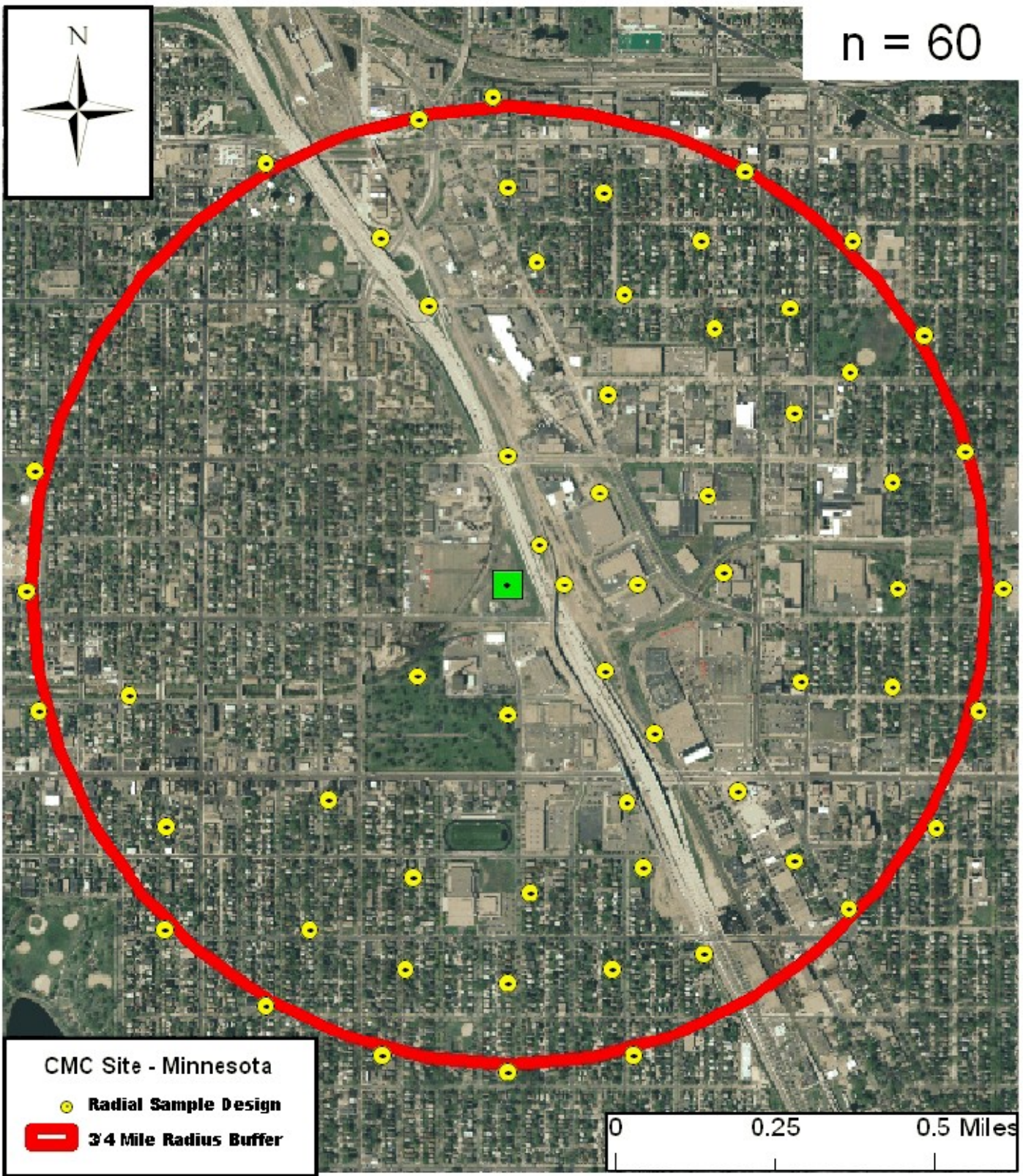
## Phase Two

While the first phase is designed to tell EPA which way the contamination traveled, the second phase is designed to determine how far it went. This may mean EPA will take samples from yards farther than a mile from the CMC site. In short, the first two phases are designed to look for a pattern of contamination, and to give EPA a better idea of where the concentrations of arsenic are located. Phase Two will help rule out areas in which there is no need for a cleanup, but it will also help identify areas that need immediate action.

## Phase Three

The third phase could come later in the project, and would include sampling of every lot in the arsenic “hot” spots identified in the first two phases of sampling.

n = 60



CMC Site - Minnesota

● Radial Sample Design

— 3/4 Mile Radius Buffer

0 0.25 0.5 Miles