

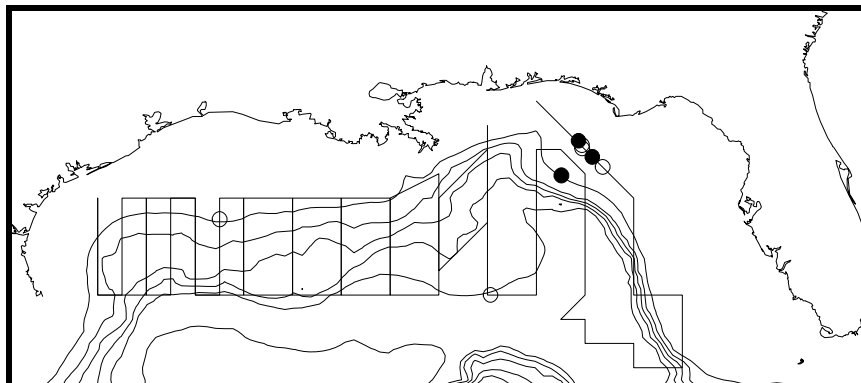
## **BRYDE'S WHALE (*Balaenoptera edeni*): Northern Gulf of Mexico Stock**

### **STOCK DEFINITION AND GEOGRAPHIC RANGE**

Bryde's whales are considered the tropical and sub-tropical baleen whale of the world's oceans. In the western Atlantic, Bryde's whales are reported from off the southeastern United States and the southern West Indies to Cabo Frio, Brazil (Leatherwood and Reeves 1983). It is postulated that the Bryde's whales found in the Gulf of Mexico may represent a resident stock (Schmidly 1981; Leatherwood and Reeves 1983), but there is no information on stock differentiation. Most sightings of Bryde's whales have occurred during the spring-summer months (Hansen et al. 1995; Davis et al., in preparation), but strandings have occurred throughout the year (Jefferson et al. 1992).

### **POPULATION SIZE**

Estimates of abundance were derived through the application of distance sampling analysis (Buckland et al. 1993) and the computer program DISTANCE (Laake et al. 1993) to sighting data collected during 1991-1994 spring-summer, visual sampling, line-transect vessel surveys of the northern Gulf of Mexico (Hansen et al. 1995) (Fig. 1), which includes data collected as part of the GulfCet program (Davis et al., in preparation). These surveys were conducted throughout the area from approximately the 200 m isobath along the U.S. coast to the seaward extent of the U.S. Exclusive Economic Zone. The seasonal GulfCet aerial surveys included only a small portion of the stock range and these data were not used for abundance estimation. The estimated abundance of Bryde's whales by survey year was 218 in 1991 (coefficient of variation, CV = 1.01) and zero in 1992, 1993, and 1994 (Hansen et al. 1995). Survey effort-weighted estimated average abundance of Bryde's whales for all surveys combined was 35 (CV = 1.10) (Hansen et al. 1995) and was based on only three sightings, all of which occurred in 1991.



**Figure 1.** Distribution of Bryde's whale sightings (filled circles) and unidentified balaenopterid whales (unfilled circles) during NOAA Ship Oregon II marine mammal surveys during 1991-1994. The straight lines show transects during two ship surveys and are examples of typical ship survey transects. Isobaths are in 183 m (100 fm) intervals.

### **Minimum Population Estimate**

The minimum population estimate is the lower limit of the two-tailed 60% confidence interval of the log-normal distributed abundance estimate, which is equivalent to the 20th percentile of the log-normal distributed abundance estimate as specified by NMFS (Anon. 1994). The minimum population estimate was based on the 1991-1994 average estimated abundance of Bryde's whales which was 35 (CV = 1.10) (Hansen et al. 1995) and is 17 Bryde's whales.

### **Current Population Trend**

The abundance estimates decreased to zero for survey years 1992-1994 because Bryde's whales were not sighted during vessel surveys those years. This could be due to chance rather than to a decrease in population size and the result of a relatively small population size and low sampling intensity or it could be due to inter-annual variation in distribution.

## **CURRENT AND MAXIMUM NET PRODUCTIVITY RATES**

Current and maximum net productivity rates are not known for this stock; therefore, the default maximum net productivity rate of 0.04 (Anon. 1994) was used for purposes of this assessment.

## **POTENTIAL BIOLOGICAL REMOVAL**

Potential biological removal level (PBR) was specified as the product of the minimum population size, one half the maximum net productivity rate, and a recovery factor for endangered, threatened, or depleted stocks, or stocks of unknown status relative to optimum sustainable population (OSP) (Anon. 1994). The recovery factor was set at 0.50 because the status of the stock relative to OSP is unknown. The resulting PBR for this stock is 0.2 Bryde's whales.

## **ANNUAL HUMAN-CAUSED MORTALITY AND SERIOUS INJURY**

The level of past or current, direct, human-caused mortality of Bryde's whales in the northern Gulf of Mexico is unknown, but available information indicates there is little fisheries interaction with Bryde's whales in the northern Gulf of Mexico. There was one report of a Bryde's whale entangled in line, but the line was removed and the animal released alive.

There were no documented strandings of Bryde's whales in the northern Gulf of Mexico during 1987-1994 which were classified as likely caused by fishery interactions or other human-related causes. Stranding data probably underestimate the extent of fishery-related mortality and serious injury because not all of the marine mammals which die or are seriously injured may wash ashore, nor will all of those that do wash ashore necessarily show signs of entanglement or other fishery-interaction. Finally, the level of technical expertise among stranding network personnel varies widely as does the ability to recognize signs of fishery interaction.

The total known fishery-related mortality and serious injury for this stock is less than 10% of the calculated PBR and, therefore, can be considered insignificant and approaching zero mortality and serious injury rate. This determination cannot be made for specific fisheries until the implementing regulations for Section 118 of the MMPA have been reviewed by the public and finalized.

## **Fisheries Information**

Pelagic swordfish, tunas, and billfish are the targets of the longline fishery operating in the U.S. Gulf of Mexico. Total longline effort for the Gulf of Mexico pelagic fishery, including OCS edge, continental slope, and Mexican territorial waters, based on mandatory logbook reporting, was 4,400 sets in 1991, 4,850 sets in 1992, and 3,260 sets in 1993 (Cramer 1994). This fishery has been monitored with about 5% observer coverage, in terms of trips observed, since 1992. There were no reports of mortality or serious injury to Bryde's whales by this fishery.

Pair trawl fishing gear has the potential to capture marine mammals, but there have been no reports of mortality or serious injury to marine mammals in the Gulf of Mexico. This fishery has not been observed by NMFS observers, and there are no other data available as to the extent of this fishery in the Gulf of Mexico. It is assumed that it is very limited in scope and duration.

## **Other Mortality**

No human-caused mortality has been reported for this stock.

## **STATUS OF STOCK**

The status of this stock relative to OSP is unknown and there are insufficient data to determine population trends. This species is not listed under the Endangered Species Act. The total level of human-caused mortality and serious injury is unknown, but it is believed to be insignificant; therefore, this is not a strategic stock.

## **REFERENCES**

- Anon. 1994. Report of the PBR (Potential Biological Removal) workshop. June 27-29, 1994. NOAA, NMFS Southwest Fisheries Science Center, La Jolla, California, 13 pp. + Appendices.
- Buckland, S. T., D. R. Anderson, K. P. Burnham and J. L. Laake. 1993. Distance Sampling: estimating abundance of biological populations. Chapman & Hall, London, 446 pp.
- Cramer, J. 1994. Large pelagic logbook newsletter - 1993. NOAA Tech. Mem. NMFS-SEFSC-352, 19 pp.
- Davis, R., G. Scott, B. Würsig, W. Evans, G. Fargion, L. Hansen, K. Mullin, N. May, T. Leming, B. Mate, J. Norris and T. Jefferson. In preparation. Distribution and abundance of marine mammals in the north-central and western Gulf of Mexico: Final Report. OCS Study #MMS 94-0003. Texas Institute of Oceanography and the National

- Marine Fisheries Service. U.S. Dept. of the Interior, Minerals Mgmt. Service, Gulf of Mexico OCS Region, New Orleans, Louisiana.
- Hansen, L. J., K. D. Mullin and C. L. Roden. 1995. Estimates of cetacean abundance in the northern Gulf of Mexico from vessel surveys. Southeast Fisheries Science Center, Miami Laboratory, Contribution No. MIA-94/95-25, 9 pp. + tables and figures.
- Jefferson, T. A., S. Leatherwood, L. K. M. Shoda and R. L. Pitman. 1992. Marine mammals of the Gulf of Mexico: a field guide for aerial and shipboard observers. Texas A&M University Printing Center, College Station, Texas, 92 pp.
- Laake, J. L., S. T. Buckland, D. R. Anderson, and K. P. Burnham. DISTANCE user's guide, V2.0. Colorado Cooperative Fish & Wildlife Research Unit, Colorado State University, Ft. Collins, Colorado, 72 pp.
- Leatherwood, S. and R. R. Reeves. 1983. The Sierra Club handbook of whales and dolphins. Sierra Club Books, San Francisco, 302 pp.
- Schmidly, D. J. 1981. Marine mammals of the southeastern United States and the Gulf of Mexico. U.S. Fish and Wildlife Service, Office of Biological Services, Washington, DC, FWS/OBS-80/41, 165 pp.