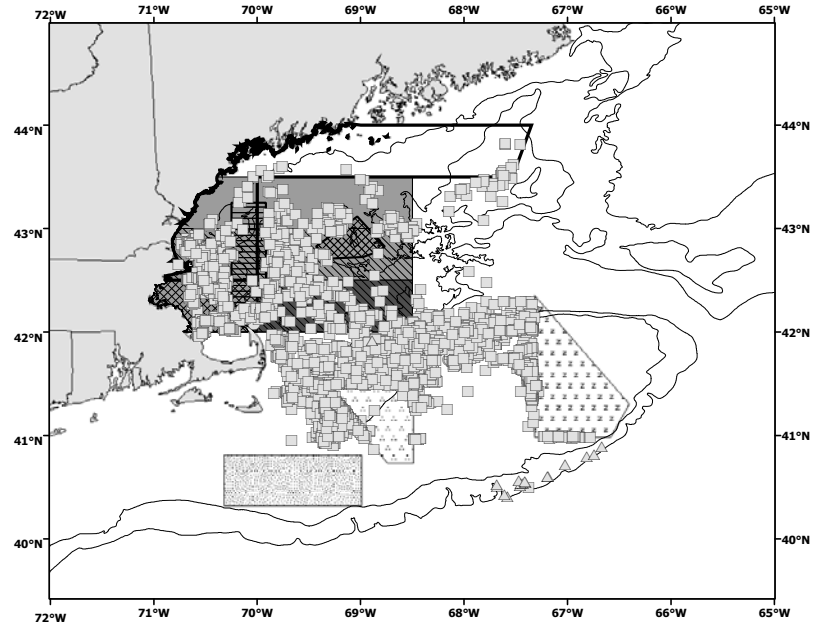


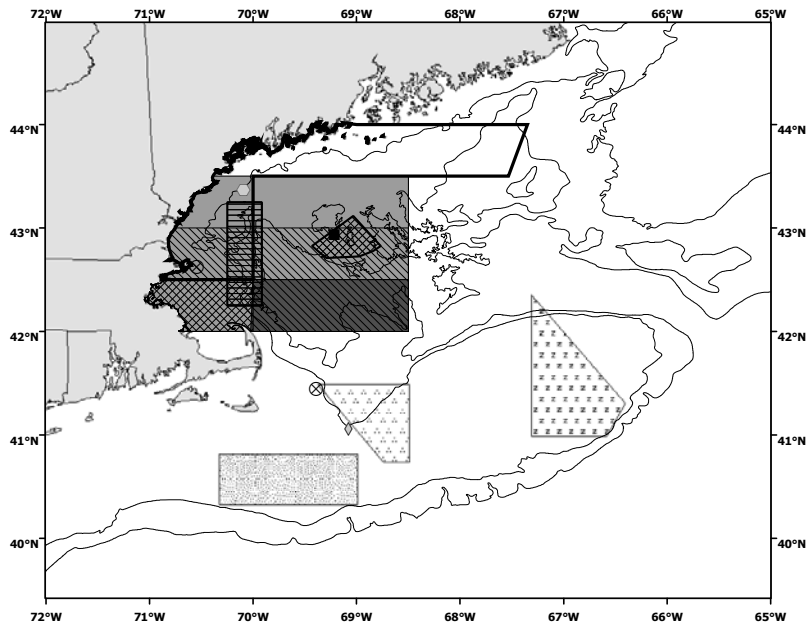
**Figure 18. 2002 Northeast bottom trawl observed tows (A) and observed incidental takes (B)**

**Observed tows**

- mixed finfish/invertebrates
- multi-species groundfish
- △ squid/mackerel/butterfish
- ◇ common dolphin
- harbor seal
- ⊗ unknown seal
- white-sided dolphin
- ▨ Cashes Ledge
- ▩ Western Gulf Of Maine Closed Area
- ▧ Rolling Closure Area 2
- ▦ Rolling Closure Area 4
- ▥ Rolling Closure Area 5
- ▤ Rolling Closure Area 1
- ▣ Rolling Closure Area 3
- ▢ Closed Area 1
- Closed Area 2
- Nantucket Lightship Closed Area



**(A)**



**(B)**