

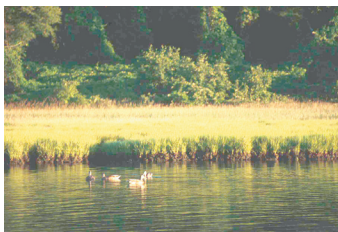
Success Stories

Geospatial Information Making a Difference

CHALLENGE:

Coordinating Environmental Preservation Efforts

In recent years, citizens have passed hundreds of ballot initiatives supporting land preservation, community reinvestment, public transit and other measures to manage growth in their communities. Rhode Island land conservation advocates have established land trusts as one way for communities to preserve the environment and protect their quality of life. To strengthen their efforts, neighboring land trusts in Washington County wanted to join forces across municipal boundaries and combine their separate preservation efforts.



A partnership of federal and local entities has allowed land preservation trusts to establish mutual priorities for their advocacy efforts

ACTION

The U.S. Fish and Wildlife Coastal Program partnered with the Washington County Land Trust Coalition, a consortium of nine local land trusts formed to facilitate regional planning and cooperation. With expertise from the Fish and Wildlife Service, the Coalition was able to identify regional priorities for natural areas: ground water aquifers, tidally influenced habitats, rare species areas, surface water habitats and farm lands. The Fish and Wildlife Service combined this natural area information into several map views, enabling the individual land trusts to see where their priorities overlapped, so they could cooperate on those areas.

RESULTS

- Using maps created through this partnership, Coalition members were able to develop a collaborative regional approach to shared high priority areas, and to advocate for common preservation goals
- The public can access the data through the Rhode Island State GIS consortium, RIGIS, a group of government and private organizations that monitors, coordinates and provides leadership for GIS technology across the state



Do you have a story to share? Visit the FGDC website at www.fgdc.gov to learn more.