

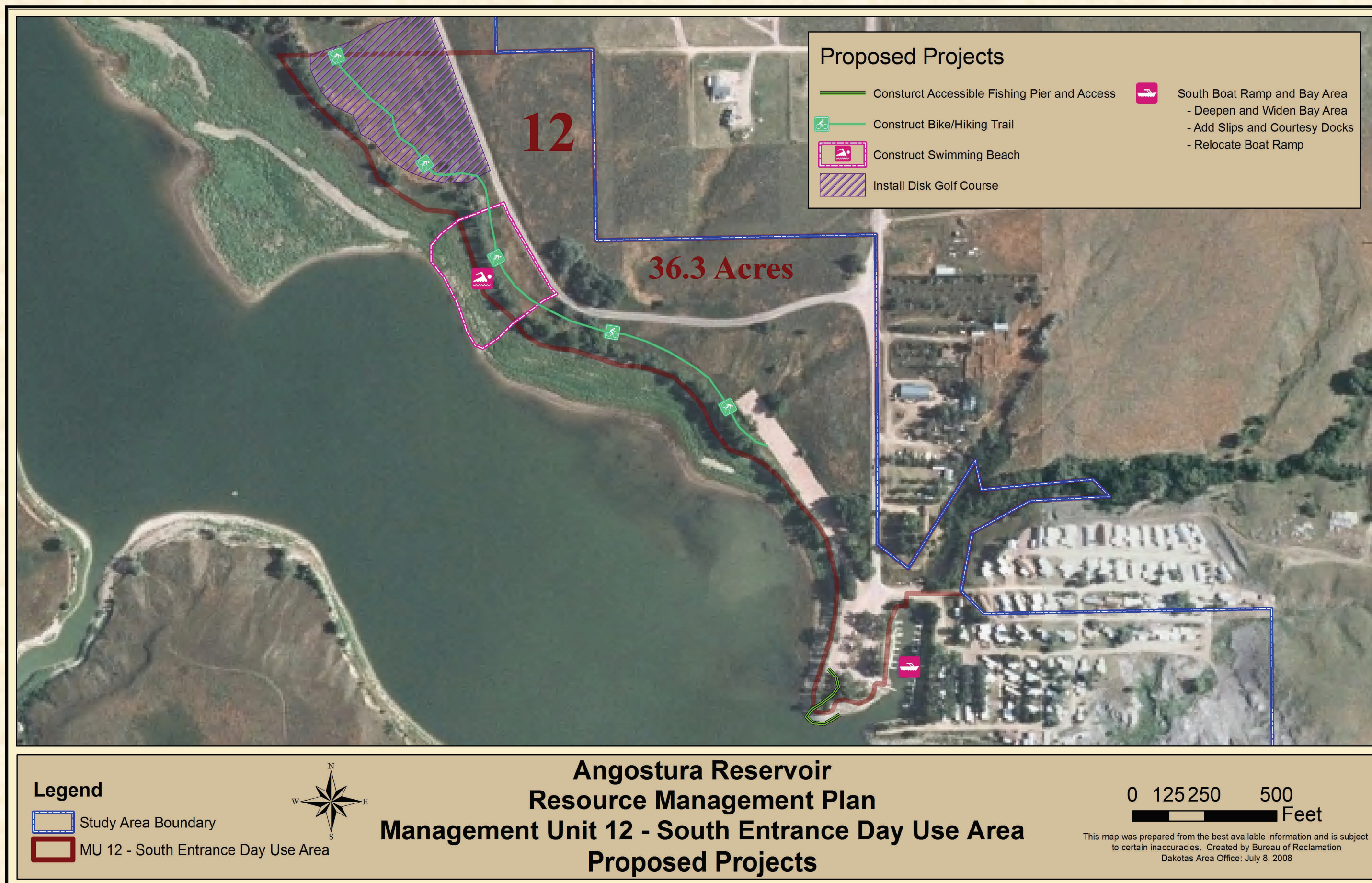
# RECLAMATION

*Managing Water in the West*

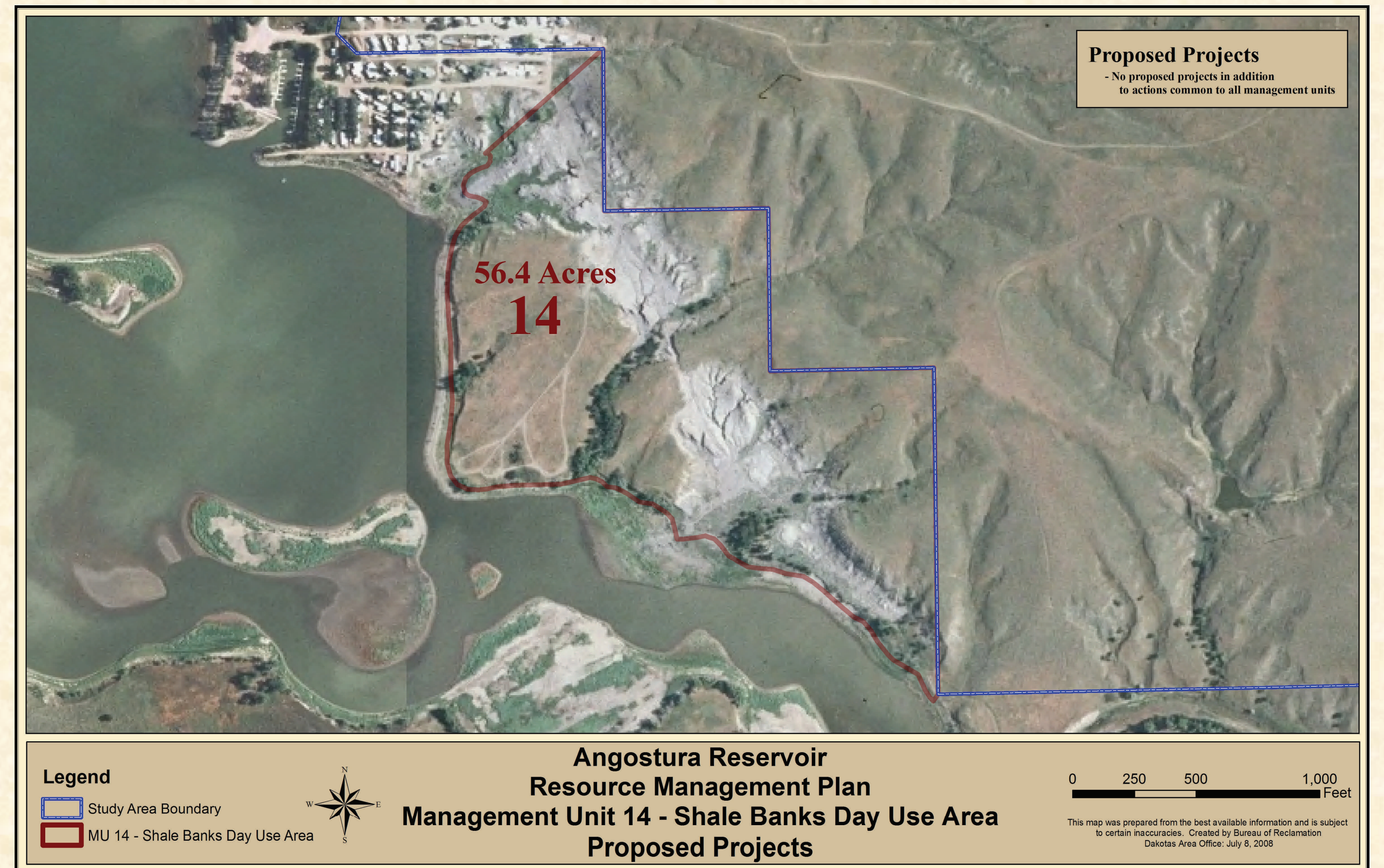
July 2008  
Dakotas Area Office

## Angostura Resource Management Plan

### Developed Recreation South Unit Day Use Areas



MU Number	MU Description	Existing MU Type	MU Goal(s) and Objectives	Alternative A No Action	Alternative B Developed Recreation	Alternative C Enhanced Recreation
12	South Entrance Day Use Area	Developed Recreation	Provide adequate recreation facilities to support the demand for diverse recreational opportunities and a quality experience consistent with following objectives:  LUM 1.2, LUM 1.3, LUM 1.4, LUM 1.5 NAT 1.2, NAT 1.8, NAT 1.9, NAT 1.10, NAT 1.11, NAT 1.12, NAT 1.13 REC 1.1, REC 1.5, REC 1.6, REC 1.7, REC 1.8, REC 1.9, REC 1.11, REC 1.12 CR 1.1, CR 1.2, CR 1.3, CR 1.4	- Accessible Features - Information/Entrance Station - Utilities - Marina - Boat Ramp - Boat Dock - Trash Container - Vault Toilet	- Deepen and widen the present slip area  - Add more slips (Low Water) - Accessible fishing - Courtesy docks - Disk Golf Course - Swimming Beach - Bike/Hiking Trail	- Same as Alternative B including:  - Move boat ramp to the south end of the point into deeper water and to relieve congestion around ramp and slips



MU Number	MU Description	Existing MU Type	MU Goal(s) and Objectives	Alternative A No Action	Alternative B Developed Recreation	Alternative C Enhanced Recreation
14	Shale Banks Day Use Area	Multiple Use	Provide minimum recreation opportunities while protecting, conserving, restoring and enhancing wildlife habitat consistent with the following objectives:  LUM 1.1, LUM 1.2, LUM 1.4, LUM 1.3, LUM 1.5 NAT 1.1, NAT 1.2, NAT 1.3, NAT 1.9, NAT 1.10, NAT 1.11, NAT 1.12, NAT 1.13 REC 1.2, REC 1.5, REC 1.6, REC 1.7, REC 1.8, REC 1.9, REC 1.11, REC 1.12 CR 1.1, CR 1.2, CR 1.3, CR 1.4	- Dirt Road	- No Proposed Actions	- No Proposed Actions

### Lake Side Use Areas



MU Number	MU Description	Existing MU Type	MU Goal(s) and Objectives	Alternative A No Action	Alternative B Developed Recreation	Alternative C Enhanced Recreation
16	Bailey's Lake Side Use Area	Developed Recreation	Provide diverse recreational opportunities and a quality experience consistent with the following objectives:  LUM 1.1, LUM 1.2, LUM 1.3, LUM 1.4, LUM 1.5 NAT 1.2, NAT 1.8, NAT 1.9, NAT 1.10, NAT 1.11, NAT 1.12, NAT 1.13 REC 1.2, REC 1.5, REC 1.6, REC 1.7, REC 1.8, REC 9, REC 1.11, REC 1.12 CR 1.1, CR 1.2, CR 1.3, CR 1.4	- Primitive Camping - Picnic Shelter - Boat Ramp - Boat Dock - Vault Toilet - 2 Vault Toilets  - Modern Comfort Station  - Potable Water - Groomed shoreline - Well - Utilities	- Remove Picnic Shelter	- Same as Alternative B



MU Number	MU Description	Existing MU Type	MU Goal(s) and Objectives	Alternative A No Action	Alternative B Developed Recreation	Alternative C Enhanced Recreation
19	Shep's Canyon Lake Side Use Area	Developed Recreation	Provide developed recreation facilities to support the demand for diverse recreational opportunities and a quality experience consistent with the following objectives:  LUM 1.2, LUM 1.3, LUM 1.4, LUM 1.5 NAT 1.2, NAT 1.3, NAT 1.9, NAT 1.8, NAT 1.10, NAT 1.11, NAT 1.12, NAT 1.13 REC 1.1, REC 1.3, REC 1.5, REC 1.6, REC 1.7, REC 1.8, REC 1.9, REC 1.11, REC 1.12 CR 1.1, CR 1.2, CR 1.3, CR 1.4	- Boat Ramp and parking - Boat Dock - Vault Toilet - Irrigation point of diversions - Angostura Island Estates entrance road - Angostura Island Estates trails	- Improve access and upgrade facilities - Add trash containers	- Same as Alternative B including: - Accessible Fishing Pier - Provide groom shoreline (O&M) - Provide public access to beach north of Island Estates - Courtesy Docks - Create fee area with appropriate public facilities - Dredge Shep's Canyon bay to allow for low water access - Low water boat ramp