

RECLAMATION

Managing Water in the West

July 2008
Dakotas Area Office

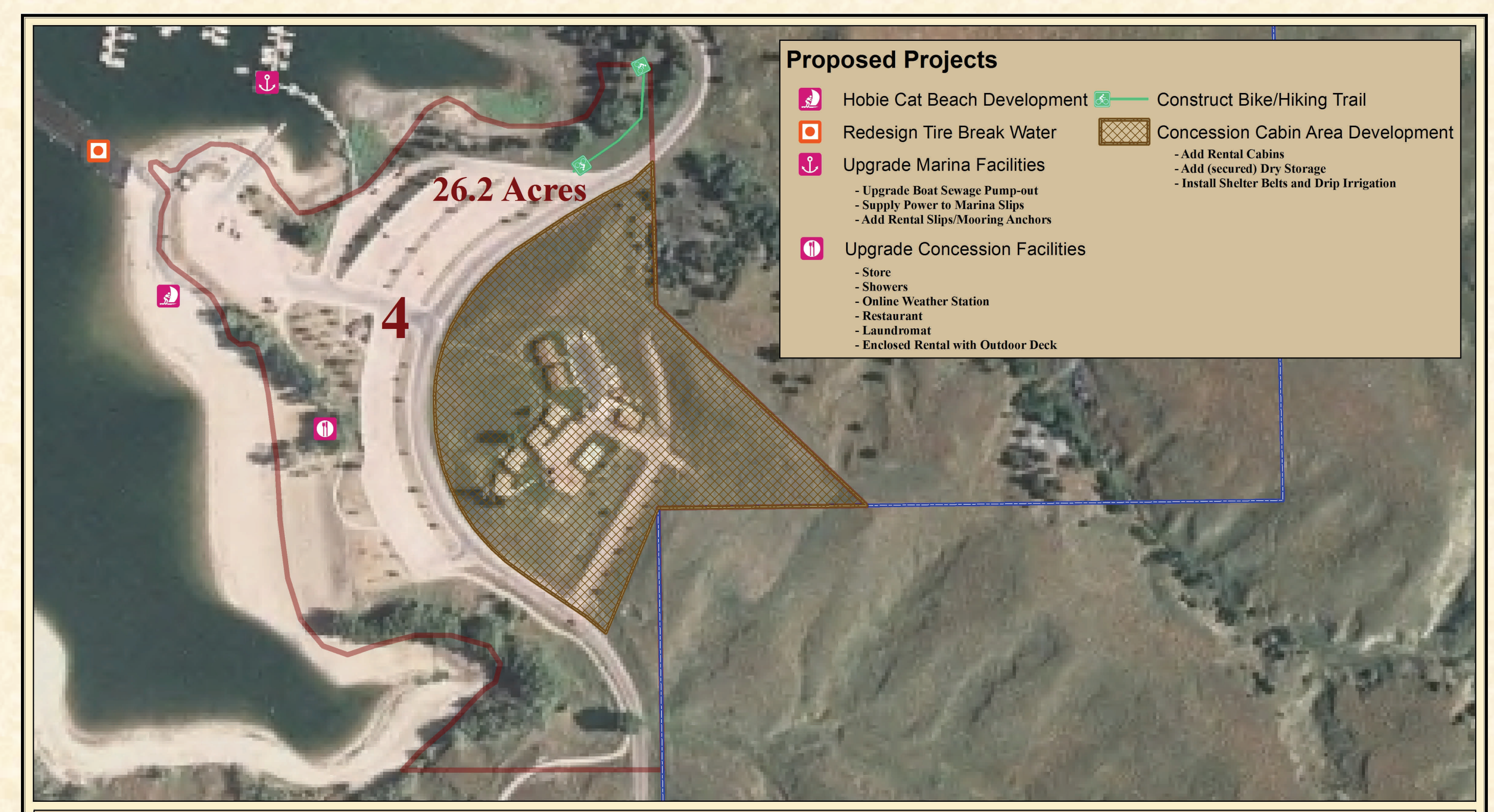
Angostura Resource Management Plan

Headquarters



MU Number	MU Description	Existing MU Type	MU Goal(s) and Objectives	Alternative A No Action	Alternative B Developed Recreation	Alternative C Enhanced Recreation
1	North Entrance Headquarters	Operations	<p>Operate and maintain Angostura Parks and Recreation areas consistent with the following objectives:</p> <p>LUM 1.1, LUM 1.2, LUM 1.3, LUM 1.4, LUM 1.5 NAT 1.1, NAT 1.2, NAT 1.8, NAT 1.9, NAT 1.10, NAT 1.11, NAT 1.12, NAT 1.13 REC 1.2, REC 1.5, REC 1.6, REC 1.7, REC 1.8, REC 1.9, REC 1.11, REC 1.12 CR 1.1, CR 1.2, CR 1.3, CR 1.4</p>	<ul style="list-style-type: none"> Shop Facility 3 Cold Storage Facilities Portable water Fuel system and fuel storage tanks Chemical storage and flammable material storage New and used petroleum material storage Repeater for maintaining Park radio communications Annual Wildlife forage plantings Irrigation at HQ Landscaping at HQ Burn pile area Borrow pit Residence and 1 Out building Well Utilities Accessible Features Trash Containers 	<ul style="list-style-type: none"> Bike/Hiking Trail Expand Drip Irrigation Add Dry Storage Install fish cleaning station with grinders Realign North Entrance Road 	<ul style="list-style-type: none"> Same as Alternative B

Marina/Concession Area



MU Number	MU Description	Existing MU Type	MU Goal(s) and Objectives	Alternative A No Action	Alternative B Developed Recreation	Alternative C Enhanced Recreation
4	Marina/Concession Area	Developed Recreation	<p>Provide developed recreation facilities to support the demand for diverse recreational opportunities and a quality experience consistent with the following objectives:</p> <p>LUM 1.2, LUM 1.3, LUM 1.4, LUM 1.5 NAT 1.2, NAT 1.8, NAT 1.9, NAT 1.10, NAT 1.11, NAT 1.12, NAT 1.13 REC 1.1, REC 1.3, REC 1.5, REC 1.6, REC 1.7, REC 1.8, REC 1.9, REC 1.11, REC 1.12 CR 1.1, CR 1.2, CR 1.3, CR 1.4</p>	<ul style="list-style-type: none"> Accessible Features 6 Rental Lodges Hobie cat storage Ski Beach Bike/Hiking Trail Marina Boat Ramp and dock Hard Point and Rip-rap areas 97 Rental boat slips and dock system 6 Boat lifts 6 Personal water craft lifts 1 Modern Comfort Station Potable Water Trash Container 1 Double vault toilet 1 Residence/storage shed Concession office Irrigation systems (3 for residence and rental lodges and ski beach area) Swimming pool 2 sand volleyball courts Convenience store w/gas Public use air compressor Boat septic pump out Boat fuel system and fuel storage tanks shoreline grooming 1 pay phone Reflective break water system 2 tire break water systems Utilities Central Sewer System Beach snack shack food service 	<ul style="list-style-type: none"> Add rental cabins Add (secured) dry storage Add boat rental slips/mooring Redesign tire break water and extend hard point as far as practical Add accessible shore fishing piers Improve boat sewage pump out station Supply power to the Marina slips Expand, improve, or replace facilities offered by the concessionaire (this may include: Store, showers, online weather station, restaurant, Laundromat, Enclosed rental hall with an outdoor deck for weddings, meetings, etc.) Shelter Belts / Drip Irrigation Courtesy Docks Improve lighting Hobie cat beach (concession managed) Bike/Hiking Trail 	<ul style="list-style-type: none"> Same as Alternative B