

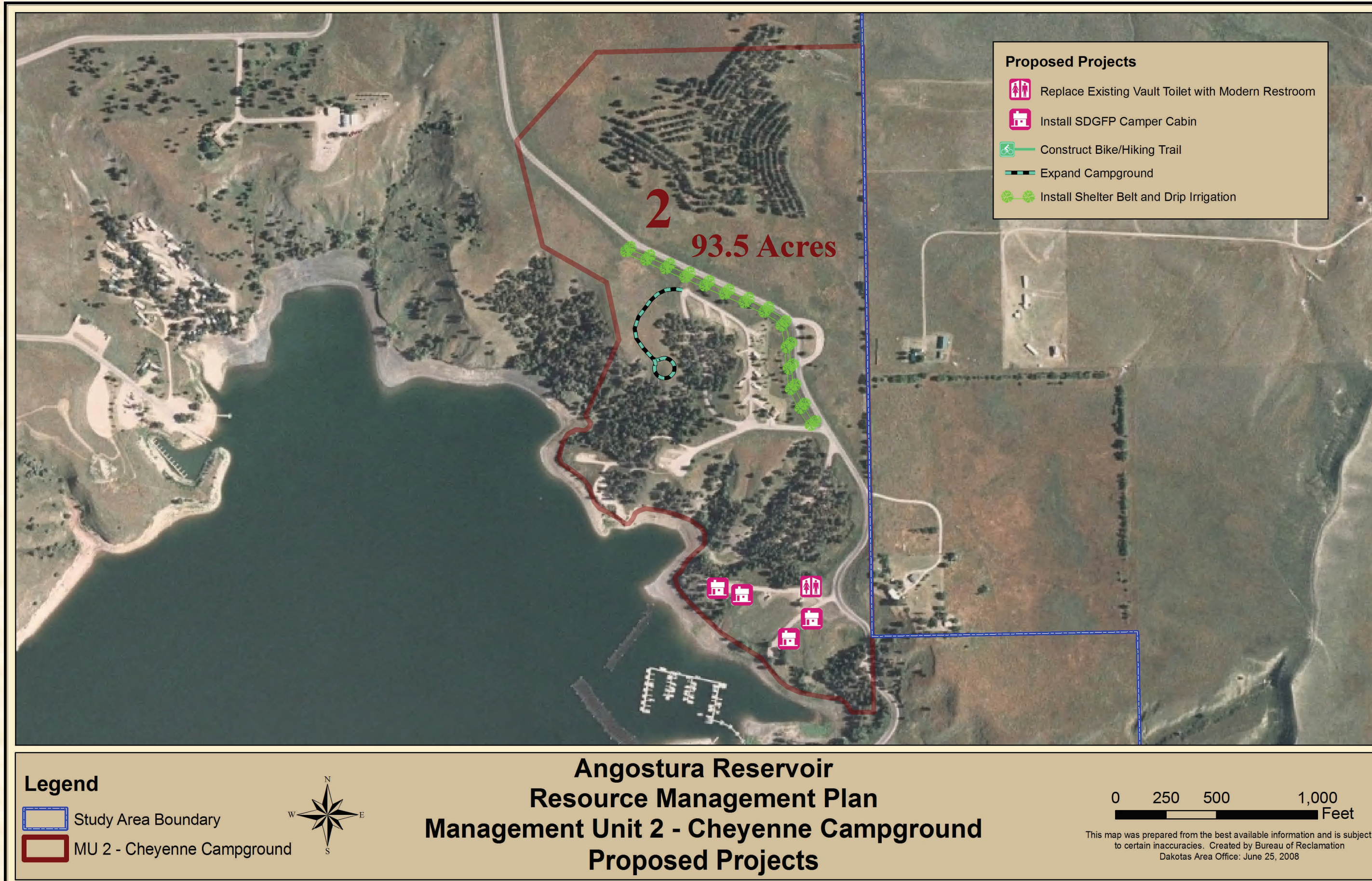
RECLAMATION

Managing Water in the West

July 2008
Dakotas Area Office

Angostura Resource Management Plan

Developed Recreation Campgrounds



MU Number	MU Description	Existing MU Type	MU Goal(s) and Objectives	Alternative A No Action	Alternative B Developed Recreation	Alternative C Enhanced Recreation
2	Cheyenne Campground	Developed Recreation	Provide developed recreation facilities to support the demand for diverse recreational opportunities and a quality experience consistent with the following natural and cultural resource objectives: LUM 1.2, LUM 1.3, LUM 1.4, LUM 1.5 NAT 1.2, NAT 1.8, NAT 1.9, NAT 1.10, NAT 1.11, NAT 1.12, NAT 1.13 REC 1.1, REC 1.5, REC 1.6, REC 1.7, REC 1.8, REC 1.9, REC 1.11, REC 1.12 CR 1.1, CR 1.2, CR 1.3, CR 1.4	<ul style="list-style-type: none"> - Accessible Features - 3 Camping Cabins - 8 Electrical Camp Sites - 14 Camping Sites W/O Electricity - 3 Full Hookup Sites - 1 Comfort Station - 1 Trash Container - Dump Station - Potable Water - Playground Equipment - Irrigation Pump house - 2 Double Vault Toilets - 2 Single Vault Toilets - Utilities 	<ul style="list-style-type: none"> - Add rental cabins - Install modern restroom Facility for camper cabins - Bike/Hiking Trail - Shelter Belts / Drip Irrigation 	<ul style="list-style-type: none"> - Same as Alternative B including: - Expand campground - Add Group camping sites



MU Number	MU Description	Existing MU Type	MU Goal(s) and Objectives	Alternative A No Action	Alternative B Developed Recreation	Alternative C Enhanced Recreation
6	Cascade Campground	Developed Recreation	Provide developed recreational facilities to support the demand for diverse recreational opportunities and a quality experience consistent with objectives; LUM 1.1, LUM 1.2, LUM 1.3, LUM 1.4, LUM 1.5 NAT 1.2, NAT 1.8, NAT 1.9, NAT 1.10, NAT 1.11, NAT 1.12, NAT 1.13 REC 1.1, REC 1.5, REC 1.6, REC 1.7, REC 1.8, REC 1.9, REC 1.11, REC 1.12 CR 1.1, CR 1.2, CR 1.3, CR 1.4	<ul style="list-style-type: none"> - Accessible Features - 63 Electrical Camp Sites - 2 Full Hookup Sites - 2 Camping Cabins - Amphitheater - Playground Equipment - Trash Containers - Vault Toilet - Potable Water - 2 Modern Comfort Station - Sewer Lagoons - Central Sewer System - Well - Groomed shoreline - Utilities 	<ul style="list-style-type: none"> - Expanded camping - Rental cabins - Shelter Belts / Drip Irrigation - Well Irrigation - Bike/Hiking Trail 	<ul style="list-style-type: none"> - Same as Alternative B



MU Number	MU Description	Existing MU Type	MU Goal(s) and Objectives	Alternative A No Action	Alternative B Developed Recreation	Alternative C Enhanced Recreation
9	Hat Creek Campground	Developed Recreation	Provide developed recreation facilities to support the demand for diverse recreational opportunities and a quality experience consistent with the following objectives; LUM 1.2, LUM 1.3, LUM 1.4, LUM 1.5 NAT 1.2, NAT 1.8, NAT 1.9, NAT 1.10, NAT 1.11, NAT 1.12, NAT 1.13 REC 1.1, REC 1.5, REC 1.6, REC 1.7, REC 1.8, REC 1.9, REC 1.11, REC 1.12 CR 1.1, CR 1.2, CR 1.3, CR 1.4	<ul style="list-style-type: none"> - Accessible Features - 21 Electrical Camp Sites - 5 Tent Camping Sites - 1 Full Hookup Site - 2 Camping Cabins - Bike/Hiking Trail - Playground Equipment - Trash Containers - Vault Toilet - Modern Comfort Station - Groomed shoreline - Utilities - Potable Water 	<ul style="list-style-type: none"> - Rental cabins - Bike/Hiking Trail - Shelter Belts / Drip Irrigation 	<ul style="list-style-type: none"> - Same as Alternative B



MU Number	MU Description	Existing MU Type	MU Goal(s) and Objectives	Alternative A No Action	Alternative B Developed Recreation	Alternative C Enhanced Recreation
11	Horsehead Campground	Developed Recreation	Provide developed recreation facilities to support the demand for diverse recreational opportunities and a quality experience consistent with the following objectives; LUM 1.2, LUM 1.3, LUM 1.4, LUM 1.5 NAT 1.2, NAT 1.8, NAT 1.9, NAT 1.10, NAT 1.11, NAT 1.12, NAT 1.13 REC 1.1, REC 1.3, REC 1.5, REC 1.6, REC 1.7, REC 1.8, REC 1.9, REC 1.11, REC 1.12 CR 1.1, CR 1.2, CR 1.3, CR 1.4	<ul style="list-style-type: none"> - Accessible Features - 51 Electrical Camp Sites - 2 Camping Cabins - Playground Equipment - Trash Containers - Dump Station - 2 Double Vault Toilets - Modern Comfort Station - Potable Water - 1 Full Hookup Site - Utilities - 2 Wells 	<ul style="list-style-type: none"> - Rental Cabins - Expanded camping - Shelter Belts / Drip Irrigation - Add Comfort Station to support additional camp sites - Bike/Hiking Trail 	<ul style="list-style-type: none"> - Same as Alternative B