

# Spatially Speaking

## FGDC Monthly Update

VOLUME 1, ISSUE 2

JUNE 2007

### JUNE EVENTS

**FGCS Work-  
group Meeting** 13th  
(Lakewood, CO)

**ESRI User Con-  
ference (San  
Diego, CA)** 18th—  
22nd

**Training—  
Metadata Stan-  
dards and How  
to Comply With  
Them** 20th  
(San Diego, CA)

**Training—  
NOAA's Na-  
tional Geodetic  
Survey (NGS) -  
Geodesy and  
Geospatial Vi-  
sion For The  
Future** 20th  
(San Diego, CA)

For more information on  
FGDC events view the  
calendar at:

<http://www.fgdc.gov/calendar>

## FGDC Working With Partners to Create National Geospatial Advisory Committee

On May 14, Interior Deputy Secretary Lynn Scarlett announced the formation of the National Geospatial Advisory Committee (NGAC). The NGAC is being created to advise the Federal government on the management of national geospatial programs and the development of the National Spatial Data Infrastructure (NSDI). The Committee will provide advice and recommendations on Federal geospatial policy and management issues and provide a forum to convey views representative of our partners in the geospatial community. The Committee is being formed by the Department of the Interior on behalf of the Federal Geographic Data Committee (FGDC) under the authority of the Federal Advisory Committee Act.

The effort to establish the NGAC was initiated as a result of the FGDC "Future Directions" strategic planning effort, which was completed in 2005. The Future Directions governance report, which was developed by an intergovernmental team, included a recommendation to establish a new national geospatial coordination body to be comprised of representatives of federal, state, local, and tribal governments, as well as representatives from the private and non-profit sectors. In addition, the President's Geospatial Line of Business initiative, which was established in 2006 to develop better management practices for Federal geospatial programs, recognized the importance of involving non-federal partners in the NSDI development process.

The NGAC will include approximately 20-25 members, who will be selected to generally achieve a balanced representation of the viewpoints of the various partners involved in national geospatial activities. The Secretary of the Interior will appoint Committee members and their alternates to the Committee to serve 2-year terms. FGDC will provide management and administrative support for the Committee.

The NGAC announcement is available at: <http://www.usgs.gov/newsroom/article.asp?ID=1666>

Nominations for Committee membership should be submitted electronically to: [ngacnominations@fgdc.gov](mailto:ngacnominations@fgdc.gov) by June 28, 2007. Nominations should include:

- A statement summarizing the nominee's qualifications and interest in Committee membership and describing the nominee's ability to represent a stakeholder group.
- A biographical sketch, resume, or vita.
- A list of three references or endorsements.
- Contact information for the nominee.

Please contact John Mahoney ([jmahoney@usgs.gov](mailto:jmahoney@usgs.gov)) for more information about the NGAC.

View the FGDC website at: [www.fgdc.gov](http://www.fgdc.gov)

# Highlights

"Spatially Speaking" is designed to provide updates on the activities of the FGDC. Subcommittees, workgroups, and other FGDC participants are urged to submit updates to Alison Dishman [adishman@usgs.gov](mailto:adishman@usgs.gov) by the 20th of each month.

- **Milo Robinson attended the Southern Regional GIS Users Group** ([www.ilovegis.org/sigis](http://www.ilovegis.org/sigis)) of New Jersey and eastern Pennsylvania. He participated in a panel discussion on standards. The meeting was held at the offices of Delaware Valley Regional Planning Commission in Philadelphia, PA. *For more information contact Milo Robinson ([mrobinson@usgs.gov](mailto:mrobinson@usgs.gov)).*
- **Milo Robinson participated in a meeting to review the recommendations of a National Academy of Sciences Committee** relating to use of geospatial technology to mitigate and respond to natural and man made catastrophes held at the ICMA office in Washington, DC. The meeting was arranged by GITA and several of their board members were present. These Academy recommendations are consistent with GITA's GECCo initiative. There was discussion about ICMA and GITA working more closely together to improving local level geospatial emergency response capabilities. *For more information contact Milo Robinson ([mrobinson@usgs.gov](mailto:mrobinson@usgs.gov)).*
- **Bob Ridky, Mike Lee, and Alan Stevens met with Yuki Karakowa of the Karakowa Foundation, and Granville Paules of Kelly Anderson and Associates (Formerly NASA, EO1 Program Director)** to discuss the opportunities for USGS partnering with Emergency Management Institute (EMI), a stand-alone international organization established by FEMA to provide training globally for potential and existing emergency decision makers from around the world. The goal would be to make some of the USGS training resources available and build awareness of the availability of geospatial data and information through the clearinghouse networks globally. *For more information contact Al Stevens ([asteve1@usgs.gov](mailto:asteve1@usgs.gov)).*
- **Bonnie Gallahan conducted a meeting with the Falmouth Institute** regarding the upcoming Native Tech Conference and is developing curriculum for the event. Falmouth expressed great interest in partnering with FGDC and in mutually providing comprehensive training courses and/or technical assistance. Falmouth Institute is one of the premier providers of culturally relevant education and information services for North American Indian Tribes and organizations. *For more information contact Bonnie Gallahan ([bgallahan@usgs.gov](mailto:bgallahan@usgs.gov)).*
- **Billy Tolar represented the FGDC at the Geospatial Intelligence Standards Working Group (GWG) plenary session.** The GWG provides the forum for the coordination of geospatial intelligence (GEOINT) standards for the National System for Geospatial-Intelligence (NSG). The GWG is lead and chaired by the NGA's National Center for Geospatial Intelligence Standards (NCGIS). The primary responsibilities of the GWG are to coordinate (through the GWG Core Group) population of the DoD IT Standards Registry (DISR) with GEOINT standards and to serve as the NSG community forum for all standardization activities and functions related to GEOINT. The FGDC is a member of the GWG and the GWG Core Member group. *For more information contact Billy Tolar ([btolar@usgs.gov](mailto:btolar@usgs.gov)).*
- **A call for nominations for the new National Geospatial Advisory Committee (NGAC) was issued.** The NGAC is being established by the Department of the Interior and the Federal Geographic Data Committee as an advisory body under the Federal Advisory Committee Act. The NGAC will provide advice and recommendations from partners and stakeholders on national geospatial programs. The NGAC will report to the FGDC Chair (Deputy Secretary Lynn Scarlett), and USGS will provide administrative support. Nominations are due by June 28, 2007. The call for nominations is available at <http://www.usgs.gov/newsroom/article.asp?ID=1666>. *For more information contact John Mahoney ([jmahoney@usgs.gov](mailto:jmahoney@usgs.gov)).*

# DHS Geospatial Data Model

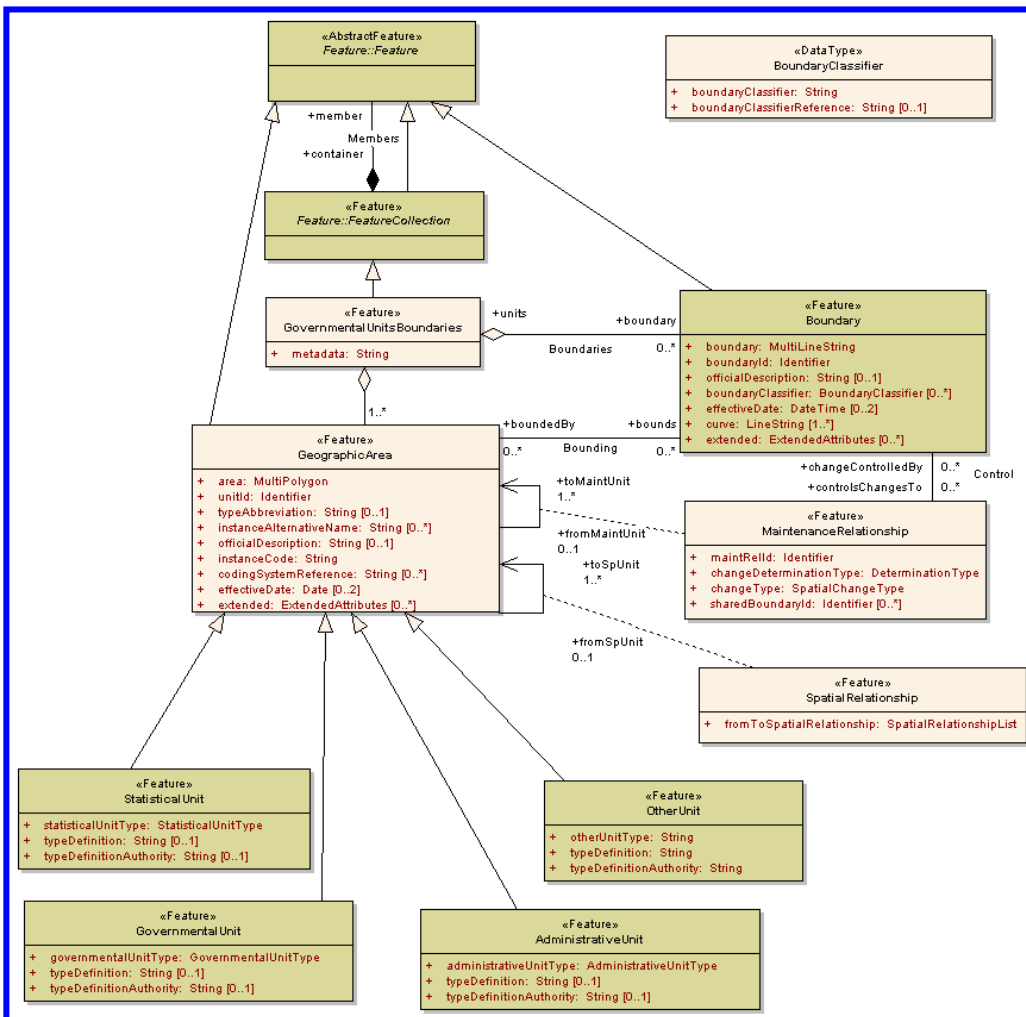
The Department of Homeland Security (DHS) Geospatial Management Office developed the DHS geospatial data model (GDM) to support geospatial interoperability and information sharing. Geospatial operations at the DHS will be based on the model, as will data exchanges with allies in the homeland security and disaster management community.

This geospatial model is a standards-based, broad logical view of the content layers, features, and attributes which may be used in homeland security activities. Implementation (or physical) models based on this logical construct will be used by various mission owners within DHS and its allies across the homeland security community as they discover, collect, store, and share geospatial data.

Versions of the UML are available here <http://www.fgdc.gov/dhsgdm>

To participate in the model's development, please visit the above webpage for more information.

What's Happening



Geospatial Data Model