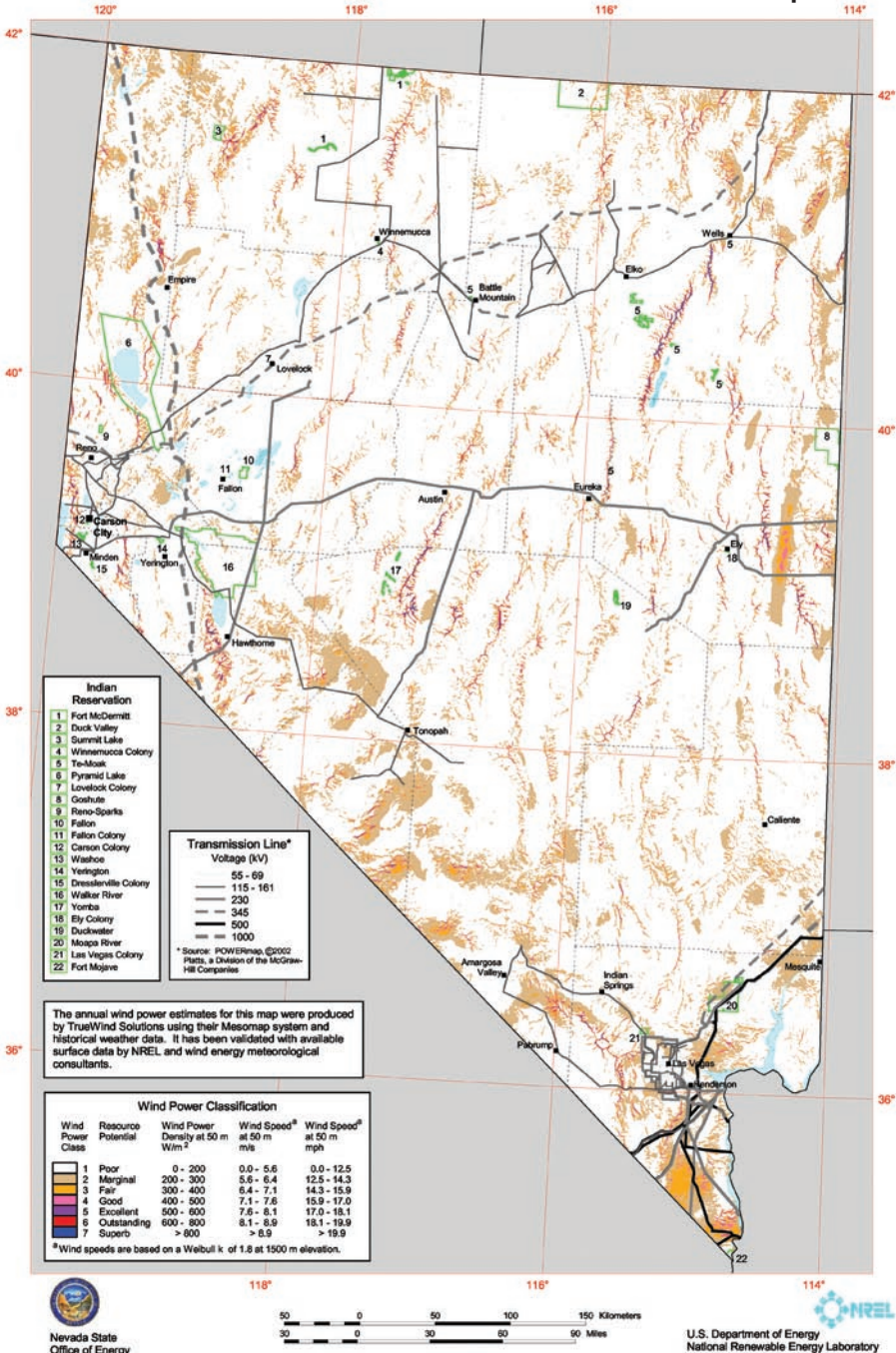


Nevada 50-Meter Wind Resource Map



This resource map shows wind speed estimates at 50 meters above the ground and depicts the resource that could be used for utility-scale wind development. As a renewable resource, wind is classified according to wind power classes, which are based on typical wind speeds. These classes range from Class 1 (the lowest) to Class 7 (the highest). In general, at 50 meters, wind power Class 4 or higher can be useful for generating wind power with large turbines. Class 4 and above are considered good resources. Particular locations in the Class 3 areas could have higher wind power class values at 80 meters than shown on the 50 meter map because of possible high wind shear. Given the advances in technology, a number of locations in the Class 3 areas may be suitable for utility-scale wind development.

Wind Energy Information Sources

Nevada Wind Working Group

Robert Cooper, Chairman of the Wind Working Group
Bureau of Consumer Protection, Nevada Office of Attorney General
100 N. Carson St.
Carson City, NV 89701
(775) 684-1184
rccooper@ag.state.nv.us
www.energy.state.nv.us/workgroups/wind/default.htm

Pete Konesky, State Energy Office (775) 687-9704 pkonesky@energy.nv.gov
Jeneane Harter, HiTech Communications (775) 232-3567 jharter9460@charter.net

American Wind Energy Association

1101 14th St. NW, 12 Floor
Washington, D.C. 20005
(202) 383-2500
windmail@awea.org
www.awea.org

National Renewable Energy Laboratory/ National Wind Technology Center

1617 Cole Blvd.
Golden, CO 80401
(303) 275-4090
public_affairs@nrel.gov
www.nrel.gov/wind

National Wind Coordinating Collaborative

c/o RESOLVE
1255 23rd St. NW, Ste. 275
Washington, D.C. 20037
Toll free: (888) 764-WIND (9463)
nwcc@resolv.org
www.nationalwind.org

Utility Wind Integration Group

PO Box 2787
Reston, VA 20195
(865) 691-5540, ext. 141
sandy@uwig.org
www.uwig.org

Windustry

2105 First Ave. South
Minneapolis, MN 55404
Toll-free: (800) 946-3640
info@windustry.org
www.windustry.org

