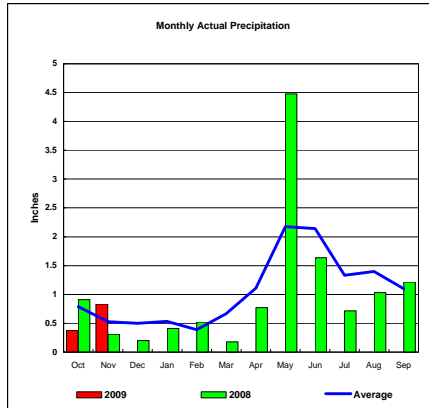
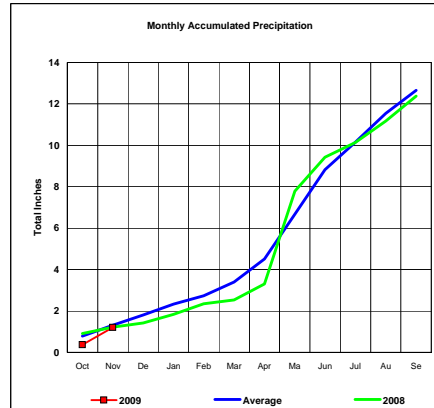


BASIN PRECIPITATION - ACTUAL MONTHLY vs AVERAGE MONTHLY TOTALS
Data for the month of November 2008

Upper Missouri River Basin

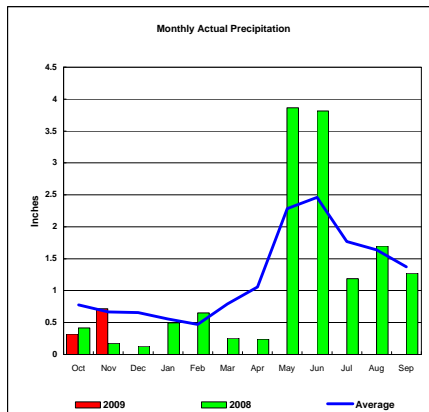


Total Actual Precipitation thru Nov (Inch.) - 1.21

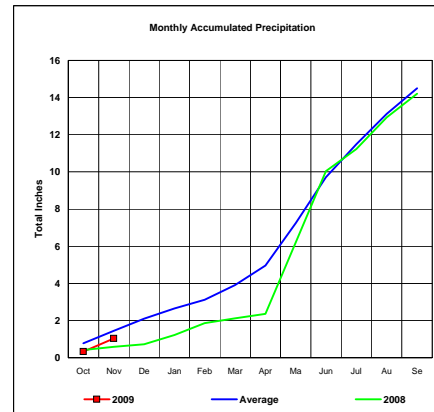


Total Average Precipitation thru Nov (Inch.) - 1.31
Percent of Average for November - 92.19%

Milk River Basin

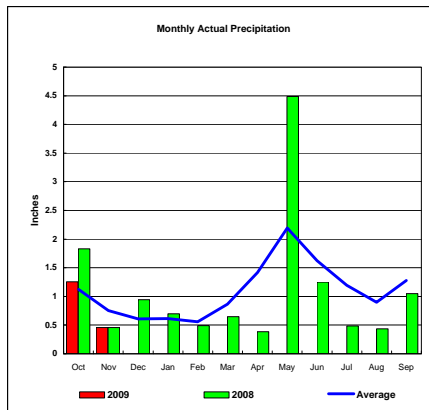


Total Actual Precipitation thru Nov (Inch.) - 1.04

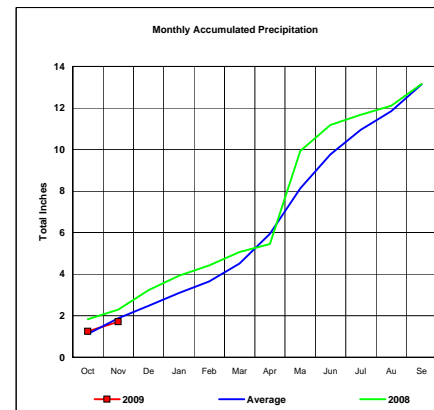


Total Average Precipitation thru Nov (Inch.) - 1.44
Percent of Average for November - 71.88%

Bighorn River Basin



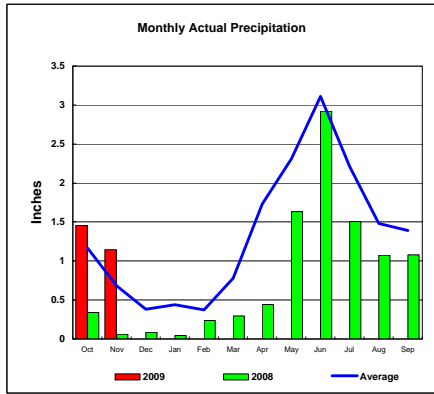
Total Actual Precipitation thru Nov (Inch.) - 1.72



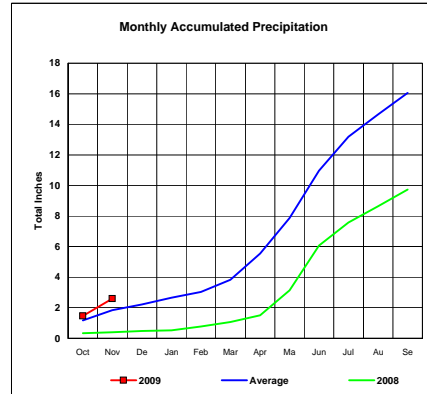
Total Average Precipitation thru Nov (Inch.) - 1.87
Percent of Average for November - 91.59%

BASIN PRECIPITATION - ACTUAL MONTHLY vs AVERAGE MONTHLY TOTALS
Data for the month of November 2008

Heart River Basin

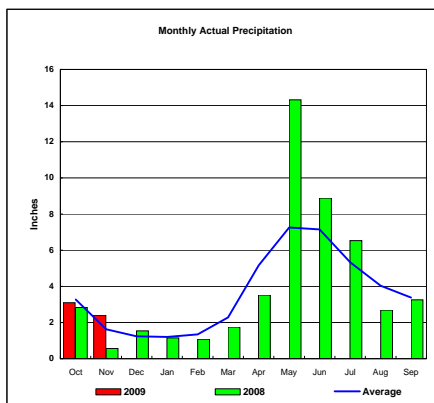


Total Actual Precipitation thru Nov (Inch.) - 2.60

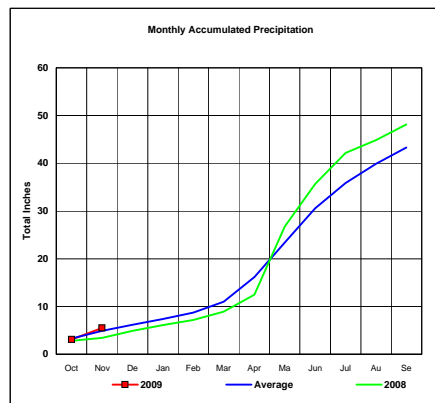


Total Average Precipitation thru Nov (Inch.) - 1.85
Percent of Average for November - 140.92%

Cheyenne River Basin

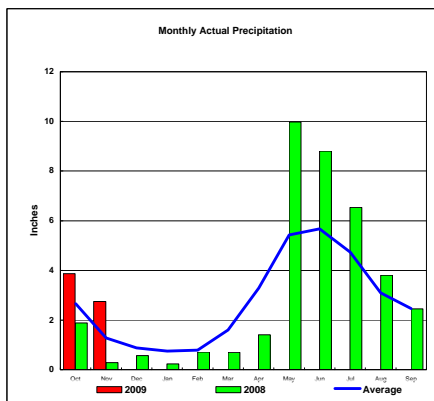


Total Actual Precipitation thru Nov (Inch.) - 5.51

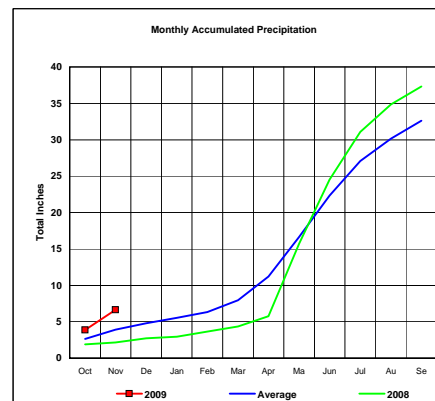


Total Average Precipitation thru Nov (Inch.) - 4.90
Percent of Average for November - 112.28%

Grand River Basin



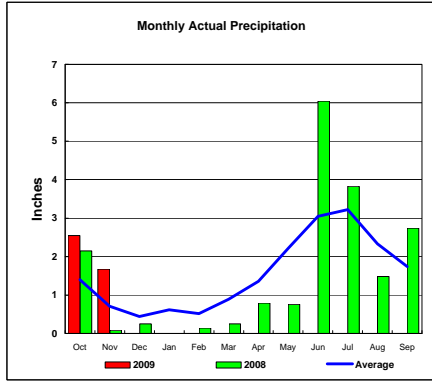
Total Actual Precipitation thru Nov (Inch.) - 6.62



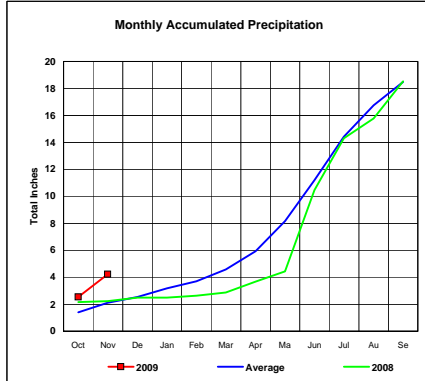
Total Average Precipitation thru Nov (Inch.) - 3.92
Percent of Average for November - 168.88%

BASIN PRECIPITATION - ACTUAL MONTHLY vs AVERAGE MONTHLY TOTALS
Data for the month of November 2008

James River Basin

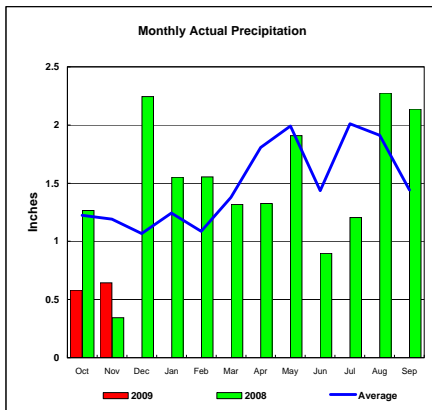


Total Actual Precipitation thru Nov (Inch.) - 4.22

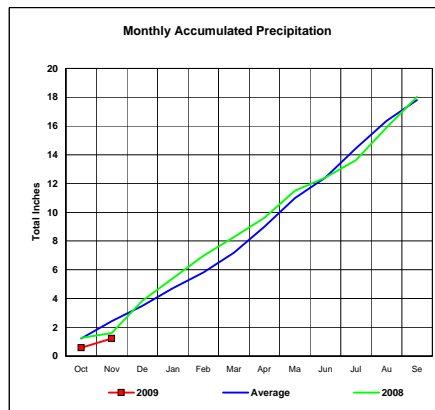


Total Average Precipitation thru Nov (Inch.) - 2.11
Percent of Average for November - 200.00%

Colorado-Big Thompson Project

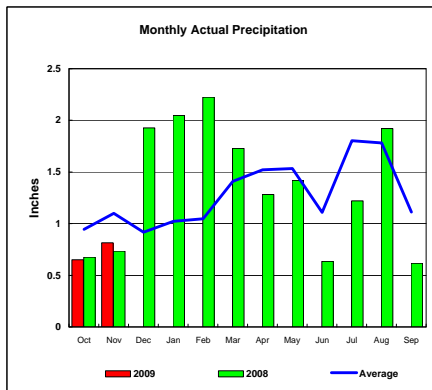


Total Actual Precipitation thru Nov (Inch.) - 1.22

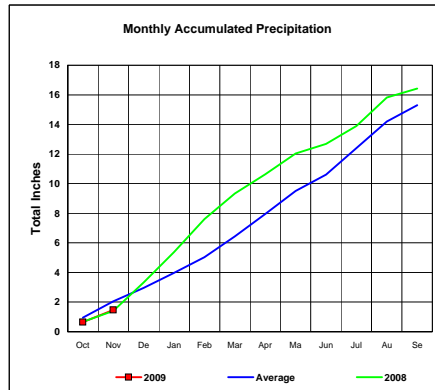


Total Average Precipitation thru Nov (Inch.) - 2.42
Percent of Average for November - 50.62%

Fryingpan-Arkansas Project



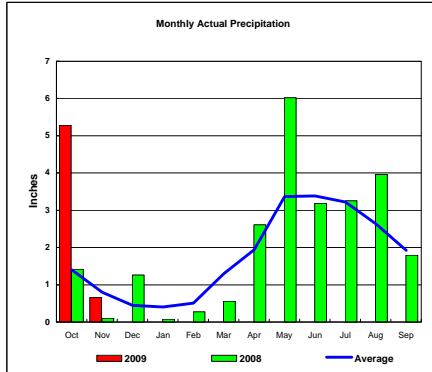
Total Actual Precipitation thru Nov (Inch.) - 1.47



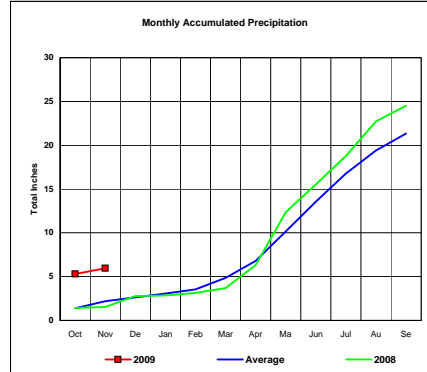
Total Average Precipitation thru Nov (Inch.) - 2.05
Percent of Average for November - 71.64%

BASIN PRECIPITATION - ACTUAL MONTHLY vs AVERAGE MONTHLY TOTALS
 Data for the month of November 2008

Republican River Basin

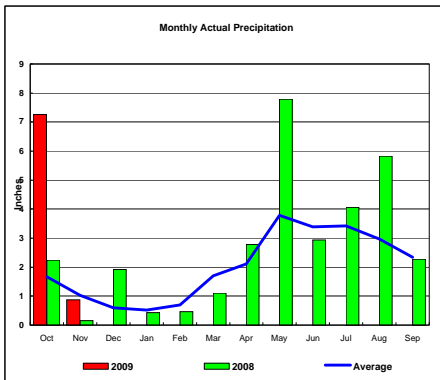


Total Actual Precipitation thru Nov (Inch.) - 5.95

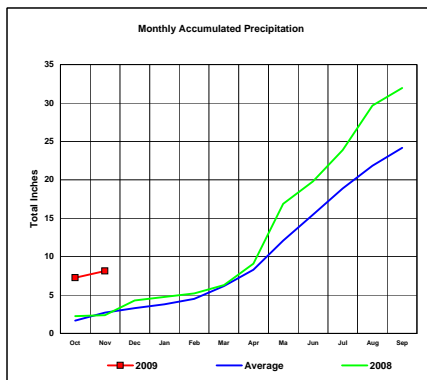


Total Average Precipitation thru Nov (Inch.) - 2.20
 Percent of Average for November - 270.28%

Solomon River Basin

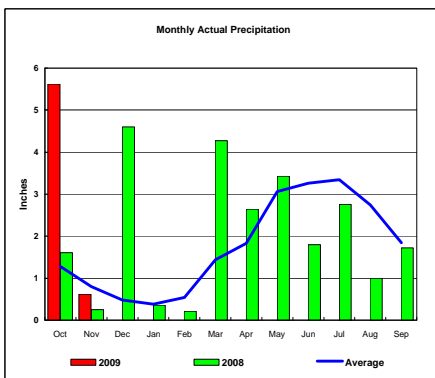


Total Actual Precipitation thru Nov (Inch.) - 8.12

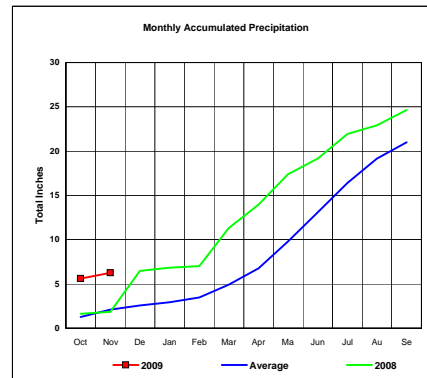


Total Average Precipitation thru Nov (Inch.) - 2.69
 Percent of Average for November - 301.49%

Smoky Hill River Basin



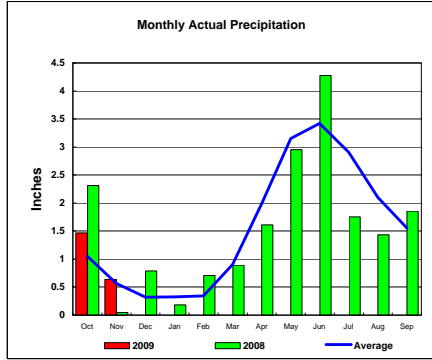
Total Actual Precipitation thru Nov (Inch.) - 6.24



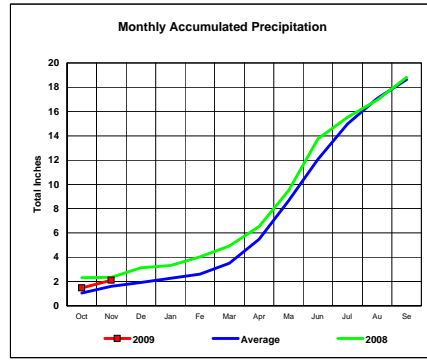
Total Average Precipitation thru Nov (Inch.) - 2.08
 Percent of Average for November - 300.00%

BASIN PRECIPITATION - ACTUAL MONTHLY vs AVERAGE MONTHLY TOTALS
 Data for the month of November 2008

Niobrara River Basin

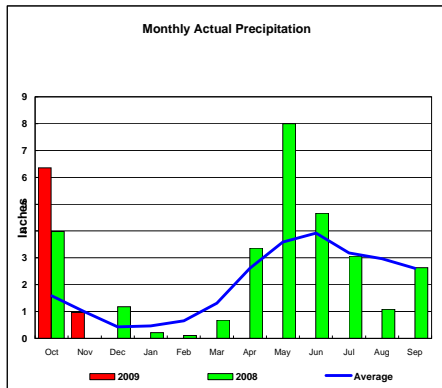


Total Actual Precipitation thru Nov (Inch.) - 2.11

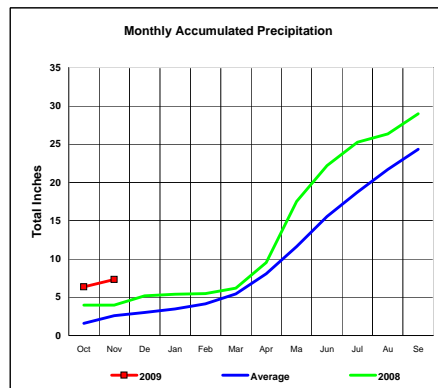


Total Average Precipitation thru Nov (Inch.) - 1.62
 Percent of Average for November - 130.34%

Lower Platte River Basin

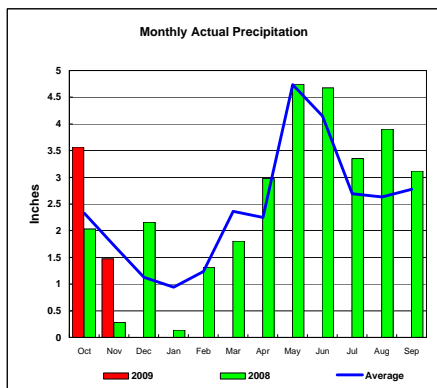


Total Actual Precipitation thru Nov (Inch.) - 7.32

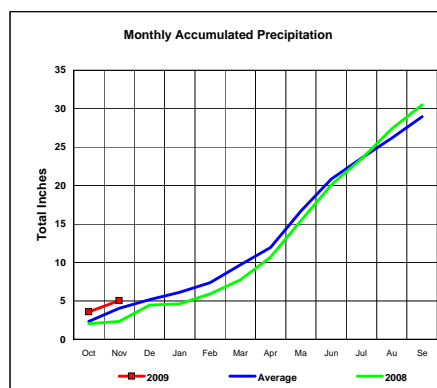


Total Average Precipitation thru Nov (Inch.) - 2.58
 Percent of Average for November - 284.27%

Arkansas River Basin



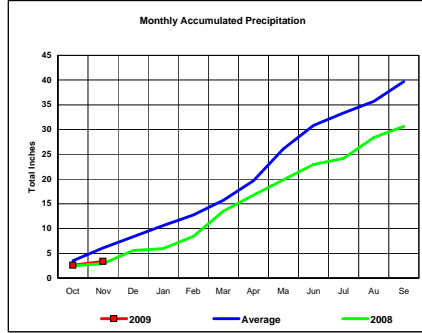
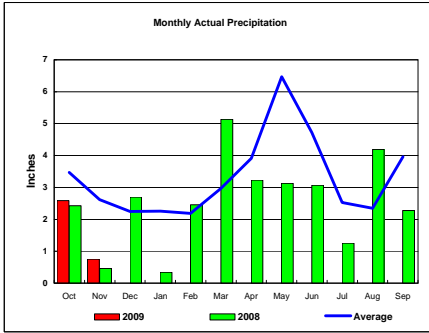
Total Actual Precipitation thru Nov (Inch.) - 5.04



Total Average Precipitation thru Nov (Inch.) - 4.05
 Percent of Average for November - 124.44%

BASIN PRECIPITATION - ACTUAL MONTHLY vs AVERAGE MONTHLY TOTALS
Data for the month of November 2008

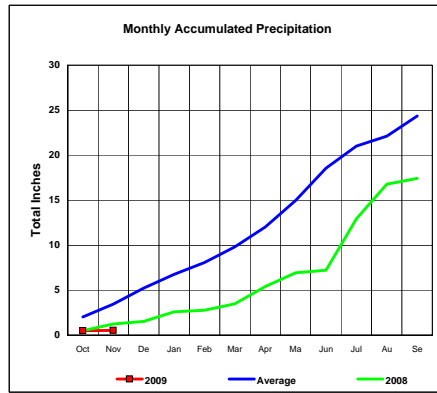
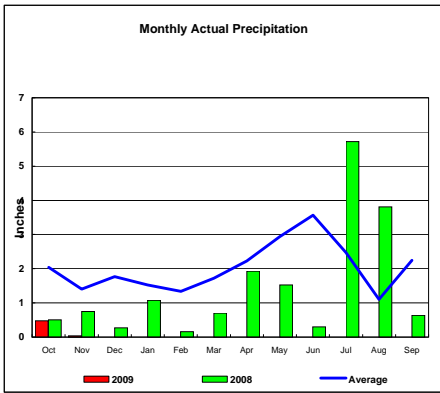
Red River Basin



Total Actual Precipitation thru Nov (Inch.) - 3.35

Total Average Precipitation thru Nov (Inch.) - 6.08
Percent of Average for November - 54.99%

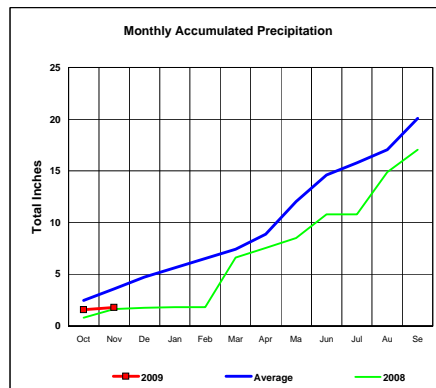
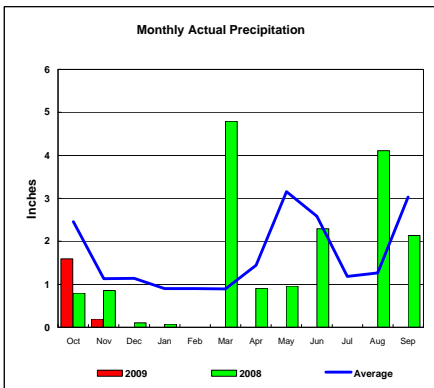
Nueces River Basin



Total Actual Precipitation thru Nov (Inch.) - 0.52

Total Average Precipitation thru Nov (Inch.) - 3.44
Percent of Average for November - 15.12%

Colorado River Basin

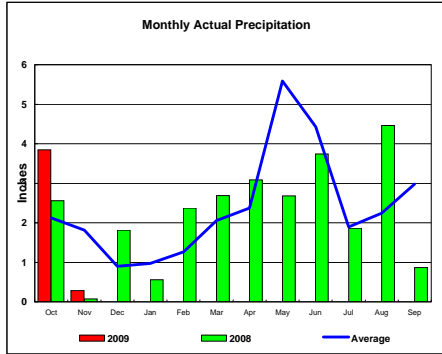


Total Actual Precipitation thru Nov (Inch.) - 1.78

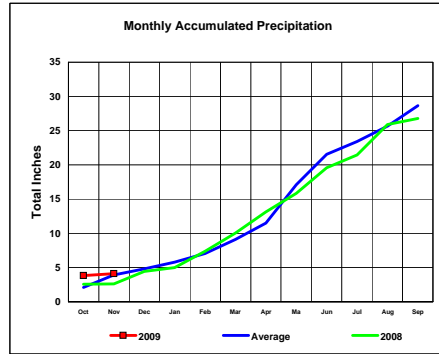
Total Average Precipitation thru Nov (Inch.) - 3.60
Percent of Average for November - 49.51%

BASIN PRECIPITATION - ACTUAL MONTHLY vs AVERAGE MONTHLY TOTALS
 Data for the month of November 2008

Washita River Basin

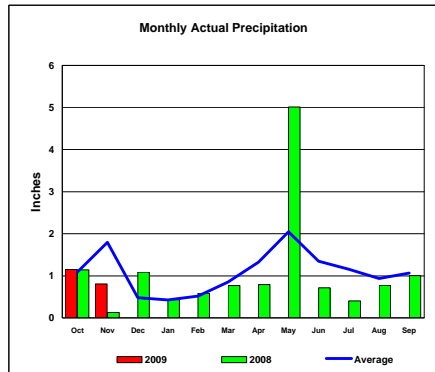


Total Actual Precipitation thru Nov (Inch.) - 4.13

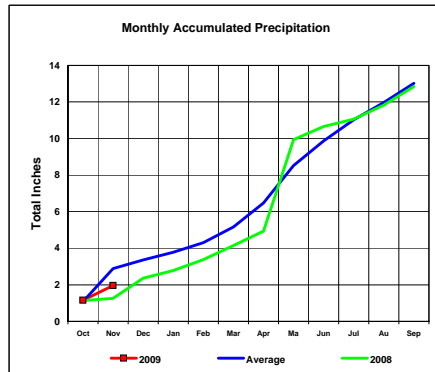


Total Average Precipitation thru Nov (Inch.) - 3.94
 Percent of Average for November - 104.96%

North Platte River Basin



Total Actual Precipitation thru Nov (Inch.) - 1.95



Total Average Precipitation thru Nov (Inch.) - 2.88
 Percent of Average for November - 67.74%