

Proposed Data Elements for PARS II

Revised: April 29, 2009 – Version 4.1

This document should be printed on legal size paper, in landscape mode.

1.0 Overview

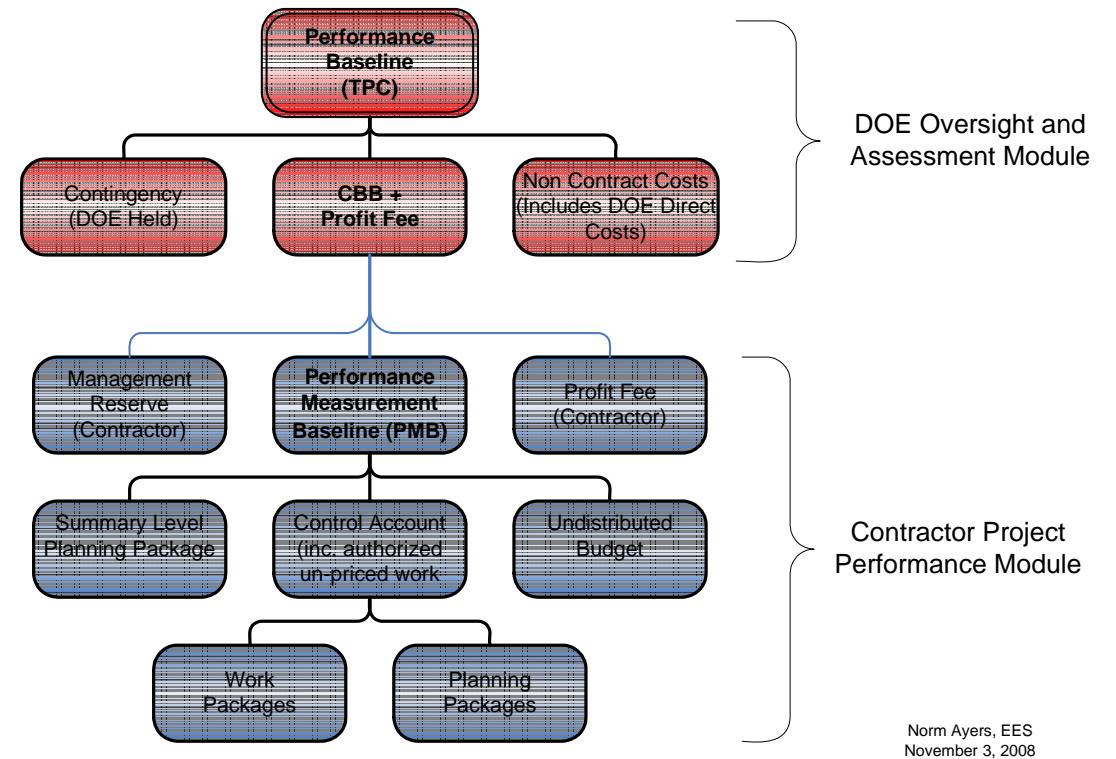
The PARS II application will collect two major types of data from DOE Field Site and DOE Headquarters locations. The two types of data are called: (1) **Oversight and Assessment Data** and (2) **Contractor Project Performance Data** and are designed to provide information to support for the concepts and data elements represented by the DOE EVMS Gold Card¹. A reproduction the relevant section of the Gold Card appears to the right.

Oversight and Assessment Data (OA), such as monthly assessments, contingency, profit/fees, other direct costs, performance baseline, milestone completion dates, contractor certification status, total project cost and other data elements will be collected from Federal Project Directors, Program Office Analysts and OECM Analysts using the PARS II Oversight and Assessment module. This type of data is often referred to as summary level data and is related to the items shown in the red-shaded portion the DOE EVMS Gold Card.

Contractor Project Performance Data (CPP), such as the management reserve, performance measurement baseline, contractor's earned value data, schedule data, variance analysis reports and risk logs will be collected from the site contractor's earned value management system using the PARS II Contractor Project Performance "project upload file function". The contractor will use this functionality, on a monthly basis, to send (i.e., upload) files containing earned value data, schedule data, management reserve, variance reports and risk to the PARS II server at Headquarters. These types of data elements are related to the blue-shaded portion the DOE EVMS Gold Card.

PARS II will store both types of data in the database and will integrate them, for reporting purposes, using the Project ID as the common data element.

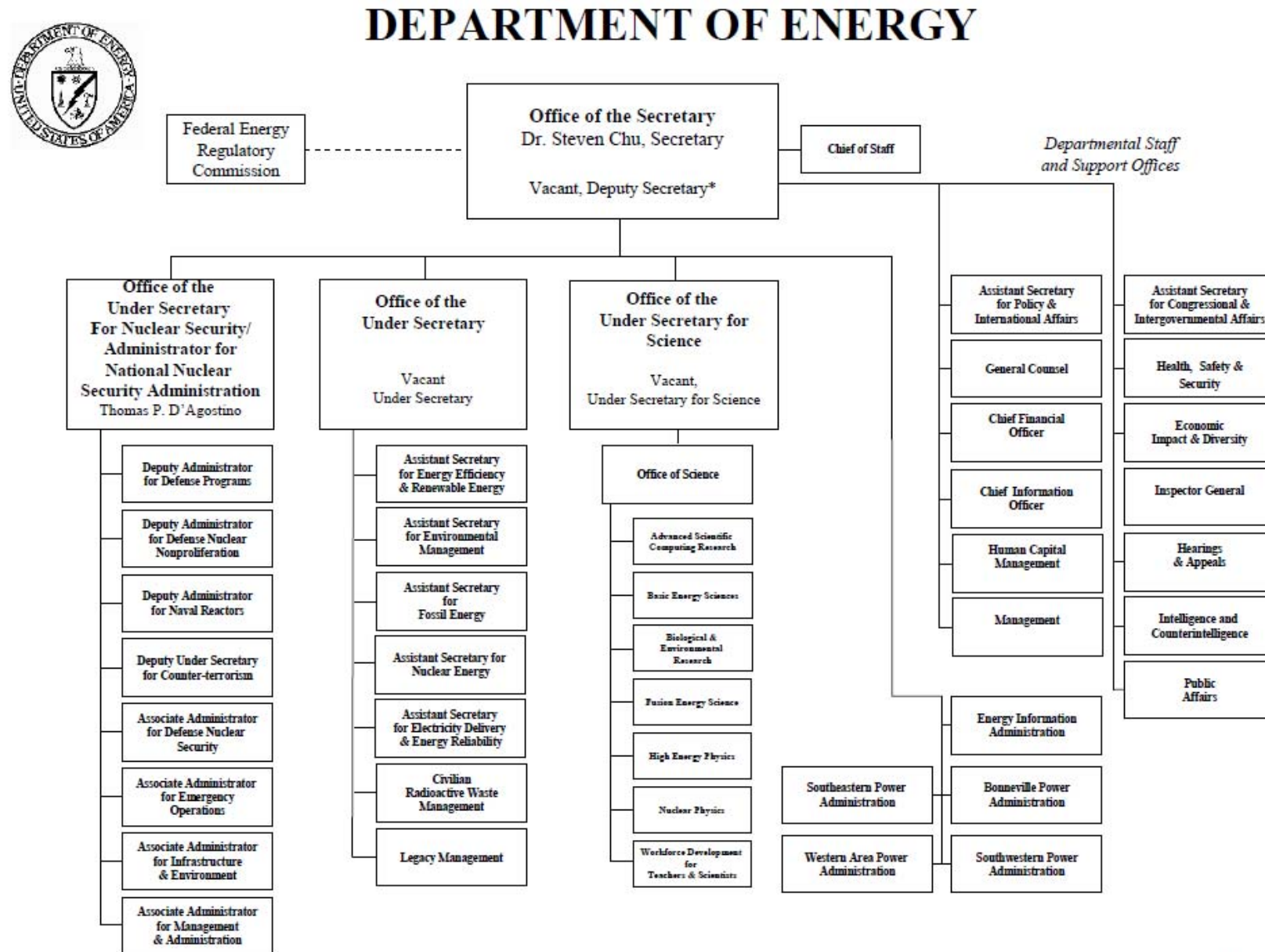
Please note that the names used to describe of database tables and data elements in this document are based on terms commonly used by Department of Energy federal and contractor personnel, and are based on the language found in relevant publications such as DOE Orders, Guides, Manuals and PARS 1 documentation. PARS II will be implemented using the Dekker PMIS COTS product, which uses its own internal database table and data element naming conventions. Therefore, when implemented, PARS II may not use many of the table names and data element names described below. However, Dekker software will be modified to provide PARS II users with a "data aliasing" feature that translates Dekker terminology into DOE terminology.



¹ DOE Guide 413.3-10, Appendix B-1, May 6, 2008

2.0 PARS II Data Hierarchy

PARS II will store each project within a hierarchy of data elements that identify the federal department, office and subordinate offices with responsibility for managing each related project. A copy of the federal agency's organization chart (January 2009) appears below, whose purpose is to show the hierarchical structure of the agency, the name of the agency (e.g., Department of Energy -DOE), the names of Program Offices (e.g., Science, Fossil Energy, etc) and the names of subordinate offices (e.g., Science / High Energy Physics).

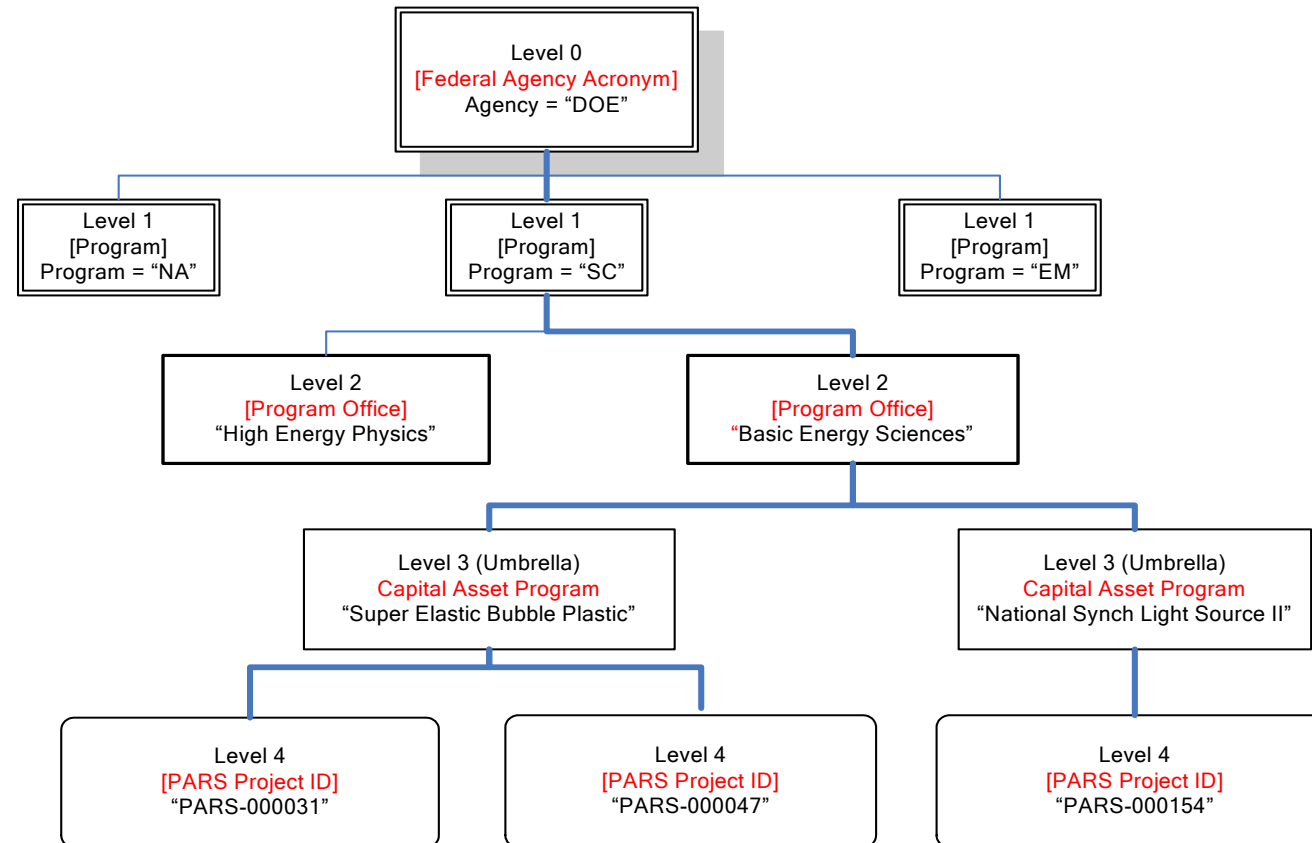


* The Deputy Secretary also serves as the Chief Operating Officer

The responsibility for managing projects within the Department of Energy falls under organizational entities called “Programs”. In some cases, responsibility for managing projects is delegated to “Program Office” organizations within Programs. Additionally, there is a need to aggregate projects by their assigned Capital Asset Program Name. The PARS II database must be designed to support this organizational structure so that projects can be grouped and reported-on by the owning Federal Agency, Program, Program Office and Capital Asset Program. The diagram below illustrates the hierarchical structure and data elements to be used within this organizational hierarchy. Each box in the hierarchy provides the following information about a data element:

- The level of the data element within the hierarchy (e.g., Level 0 = Federal Agency, Level 1 = Program, Level 2 = Program Office, Level 3 = Capital Asset Program, and Level 4 = PARS Project ID);
- The name of the data element (e.g., [Federal Agency Acronym]);
- An example of data to be used with the data element, such as “DOE” for Federal Agency Acronym.

The diagram below shows the hierarchical structure and the specific data elements to be used within the hierarchy.



3.0 Database Tables

The database for PARS II is being designed to store, for each project, **oversight and assessment data** and **contractor project performance data**. The database will contain many tables that can be categorized as either Reference Tables or Data Tables. The information stored in Reference Tables is static in nature (e.g., not updated very often) and contains data such as User, Sites, Program Office Codes, Group Access Rights, etc. Data elements in these Reference Tables will be used by PARS II for look-up or data validation purposes (e.g., using drop-down boxes). Information stored in Data Tables is dynamic in nature (e.g., is updated daily, weekly) and contains items such as the Projects Table, Narratives Table, Earned Value Table, Budget Profile Table, etc.

The sections below describe the information contained in the Reference Tables, the Data Tables and the entire list of data elements for PARS II. Please note that other tables and data elements may be added to this document as a result of information obtained from Discovery Sessions and feedback from stakeholders.

3.1 Database Reference Tables

The following list of Reference Tables to be included in the PARS II database.

	Reference Table Name	Description of Reference Table
1.	Calendar Table	An electronic calendar within PARS II to be used for calculating schedules, displaying months, days, years, selecting date range values on screens, etc.
2.	Capital Asset Program Table (Level 3)	The list of valid Capital Asset Program names.
3.	Color Status Indicators Table	A list of status indicators, to be used on screens and reports, indicating the health of the project. Color indicators are: Red, Yellow and Green and are also associated with control limit data elements.
4.	Contacts Access Rights Table	A table that lists the “access rights” available to groups of users (see Contacts Groups) who will use PARS II. Dekker COTS software extends access rights to the project level.
5.	Contacts Groups Table	The list of user groups, such as OECM Analyst, Federal Program Manager (FPM), Federal Project Director (FPD), Contractor Project Control, Contractor Project Manager, Program Office Project Manager and other groups.
6.	Contacts Table	The list of all users who may access PARS and contains information such as: user name, user title, user group, user address, user work phone number, user email address, etc.
7.	Contractor EVMS Certification Status Codes Table	The list EV certification status codes that apply to the contractor, such as: Certified, Reviewed, Not Reviewed
8.	Contractor Names Table	The list of prime contractor names.
9.	Critical Decision Structure Table	A table that defines the structure of the standard Critical Decision Milestone Table, such as CD-0, CD-1, CD-2, CD-3, CD-4, Close-out.
10.	Federal Agency Table [Level 0]	A list of official US Federal Agency acronyms, such as DOE.
11.	FPD Certification Level Codes Table	The list of certification level codes that pertain to the FPD, such as: Level 4, Level 3, Level 2, Level 1, Level 0
12.	FPD Certification Status Codes Table	The list of certification status codes that apply to the FPD, such as: Certified, Not Certified, Under Review

	Reference Table Name	Description of Reference Table
13.	FPM Certification Level Codes	A table that defines the level codes to be used to identify the various certification levels for the Federal Program Manager (FPM).
14.	Program Table (Level 1)	The names and acronyms of all DOE Program Offices and Staff Offices, such as: SC, EM, NNSA, NE, MA, OCIO
15.	Program Offices Table (Level 2)	The names and acronyms of all DOE Sub Program Offices, such as Advanced Scientific Computing Research Biological & Environmental Research, Basic Energy Sciences, Fusion Energy Sciences and Staff Offices
16.	Project Activity Status Codes Table	The list of codes that identify the current “activity status” of a project, such as: Active, Completed CD4, Financial Closeout, On-Hold.
17.	Projects User Assignment Table	Allows authorized personnel to assign various users to a project (e.g. FPD, OECM Analyst, etc).
18.	Project Type 1 Table	The list of project types, such as: System, Facility Construction, Infrastructure Improvements, Restoration, Disposition, etc.
19.	Project Type 2 Table	The companion list of Project Types, to be associated with Project Type 1 codes, such as: Nuclear. Non-Nuclear
20.	Sites Table	The list of valid Site Codes and Site Descriptions where the project is located.

3.2 Database “Data” Tables

The information below lists and describes each table name.

	Data Table Name	Description of Table
1.	Attachments Data	The project documents to be “attached” by the operator during a data entry session, and include electronic files such as: assessments, safety documents, project approval documents, project plans, project design documents, etc.
2.	Audit Log File Data	Log files, available to the PARS System Administrator, that show history transactions associated with data entry and internal workings of the system. With regard to all PARS data entry functions, log files must show who-changed-what-and-when. There will be several different types of audit log files.
3.	Budget Data	A table containing, for each fiscal year, the funding request and sources of funding to be used by the project. Data elements may include the project’s Performance Baseline and funding sources from the DOE Integrated Priority List, OMB and Congress. The makeup of the Budget Profile table for PARS II is currently being discussed at OECM.
4.	Contractor EVMS Certification Status Log	A history table that contains a transaction for each event related to the certification status of the contractor; including the contractor’s name, certification status code (e.g. not certified, certified, reviewed, surveilled) and the data of each certification event.
5.	COR (Contractor Officer Representative) Certification Status Log	A history table that contains a transaction for each event related to the certification status of the COR; including the COR’s name, certification status code (Yes or No), and the date of each certification event.
6.	Critical Decisions Data	A table that contains data elements for the critical decision milestones associated with each project and includes the following data elements: Milestone ID, Milestone Name, Milestone Narrative, Milestone Planned Date, Milestone Actual Date (and possibly Milestone Tailoring data elements).
7.	FPD Certification Level Status Log	A history table that contains a transaction for each event related to the EVMS certification status of the FPD; including the FPD’s name, certification level (e.g. Level 0, 1, 2, 3, 4) and the data of each certification event.
8.	FPM Certification Level Status Log	A history table that contains a transaction for each event related to the EVMS certification status of the FPM, including the FPM’s name, certification level (e.g. Level 0, 1, 2, 3, 4) and the data of each certification event.
9.	Key Performance Parameters Data	A table that contains a list of all the KPPs for the project, including the KPP ID, KPP Description and KPP Narrative
10.	Performance Baseline (PB) History Data	A history file of performance baseline entries made to the Performance Baseline Table, containing the original baseline and subsequent baseline changes. Data elements include the Baseline Version Number, Baseline Change Title, Baseline Change Date, Approval Authority, Narrative, etc. The table also includes a snapshot of selected data elements that were a part of the PB such as TPC, Estimated Completion Date, KPPs, Contingency, Profit/Fee.
11.	Performance Measurement Baseline (PMB) Change Data	A history file of entries made to the contractor’s Performance Measurement Baseline, containing the Baseline Change Number, Baseline Change Title, Baseline Change Date, Approval Authority, Narrative, etc. The table also includes a snapshot of selected data elements that were a part of the PMB, such as Management Reserve, WBS-Level BCWP, ACWP, BAC and others.
12.	Projects Data	The master table containing all projects in the PARS II database. Each project record in the database will have data elements such as: PARS Project I, DOE Project Name, Project Description, Project Acronym, Site Code, Managing Office Code, Project Status and will be linked to many other tables in the database.

3.3 Database Data Elements

The table in this section identifies the data elements that are proposed for use by the PARS II **Oversight and Assessment** and **Contractor Project Performance** modules.

For familiarity, the table makes use of the format used by the “PARS Data Input Requirements Document” (published by Project Performance Corporation, March 25, 2006). The table shows how and data elements will be entered during the life cycle of the project. Cells in the table are color coded to identify the conditions for update, such as “required monthly, required annually, required at special event. The column headings and rows listed in the Proposed Data Elements for PARS II Table are arranged in the following manner:

- **Column 01 – Seq:** contains the sequential number of row of the table. Please note that a **red-colored row number** means that a change was proposed to this data element by the Integrated Project team on January 14, 2008);
- **Column 02 – Data Element Name:** contains the name of the data element, along with examples of data to be used (for some data elements);
- **Column 03 – Data Dictionary Description:** contains the commonly used definition for the data element;
- **Column 04 – Data Type:** describes the data elements type, such as alphanumeric, numeric, date;
- **Column 05 – Data Length:** defines the data element’s field length, in characters;
- **Column 06 – List of Values:** shows the list of data items (e.g., data values) that belong to the data element;
- **Column 07 – Comment:** contains a brief comment that can be used for multiple purposes;
- **Column 08 – Responsible:** contains the name of the group responsible for entering values into this data element. Group codes names are: PO (Program Office), FPD (Federal Project Director), OECM (OECM Analyst), CONTR (Contractor);
- **Column 09 – Function:** contains a name that aggregates similar data elements, used in security access rights.
- **Column 10 – Ref:** contains the name of the system or document from which the data element was sourced. Reference codes are: ART (from the ART database), PDIR (PARS Data Input Requirements document), NEW (from discussions with Dekker, John Makepeace, others), PMET (Performance Metrics defined by OECM in March 2007);
- **Column 11** – contains instructions on how the data should be entered as the project is approved at CD-0;
- **Column 12** – contains instructions on how the data should be entered as the project moves from CD-0 to approval at CD-1;
- **Column 13** – contains instructions on how the data should be entered as the project moves from CD-1 to approval at CD-2;
- **Column 14** – contains instructions on how the data should be entered as the project moves from CD-2 to approval at CD-3A;
- **Column 15** – contains instructions on how the data should be entered as the project moves from CD-2 to approval at CD-3;
- **Column 16** – contains instructions on how the data should be entered as the project moves from CD-3 to approval at CD-4;
- **Column 17** – contains instructions on how the data should be entered as the project moves from CD-4 to approval at Close-out.

Table Sort Features: The Proposed Data Elements for PARS Table can be sorted by up to three columns simultaneously. The default sort sequence for the table is to sort it by the column titled “Row” (in ascending order). Examples of other useful sort sequences appear below.

- **Sort by Data Entry User** - to sort the table by user role, to see which data elements must be entered by each user group (while maintaining the original CD0 to CD-4 workflow order) use the Microsoft Word Table “Sort” function and enter the following items in the Sort Sequence dialogue box: (1) Sort by the column titled” **Responsible**, then (2) sort by the column titled: **Row**.
- **Sort by Data Group** – to sort the table by Data Group, such as Project Identity, Project Scope, Project Cost, etc. (while maintaining the original CD0 to CD-4 workflow order) use the Microsoft Word Table “Sort” function and enter the following items in the Sort Sequence dialogue box: (1) Sort by the column titled: **Data Group**, then (2) sort by the column titled: **Row**.
- **Sort by Table Name** – to sort the table by Table Name, such as Project, Narratives, FPD Certification, etc. (while maintaining the original CD0 to CD-4 workflow order) use the Microsoft Word Table “Sort” function and enter the following items in the Sort Sequence dialogue box: (1) Sort by the column titled: **Table Name**, then (2) sort by the column titled: **Row**.

Legend for Table Proposed Data Elements for PARS II: Use the legend (below) to interpret the symbols in color-coded cells found in the Proposed Data Elements table.

Legend for Table: Proposed Data Elements for PARS II

Legend for Understanding How Data Elements Should Be Processed	
AN	As Needed – Update this data element at any time in the project life cycle as needed
DU	Dual Use Data Element – this item is a dual use data element and may be found in the OA & CPP screens, functions and reports. This situation will occur when a project from a site does not use the CPP module and, therefore, all data for the project must be collected via the OA module.
IR@CD	Input required at CD Approval – An Input is required when the Critical Decision has been approved .
PB	Data elements flagged with the PB superscript will be included in the Performance Baseline (PB).
PMB	Data elements flagged with the PMB superscript will be included in the Performance Measurement Baseline (PMB).
RA	Required Annually - An update to this data element is required at the end of each fiscal year
RM	Required Monthly - A monthly update is required (during the 3 rd , 4 th week of the following month)
UR@CD	Update Required at CD Approval – An update is required when the Critical Decision has been approved .
UR@SE	Required at Special Event - An update to this data element is required when the Special Event indicated occurs
WCO	When Change Occurs – An update to this data element is required when a change occurs to a related data item, such as activity status.

3.4 Proposed Data Elements Table

Please note that recent changes to the Proposed Data Elements Table, as requested by IPT members and OECM staff can be identified by locating row numbers in the table that have been marked with red text. Rows marked for deletion and text marked with a “strikeout line” will be deleted in the final version of this document.

Seq	Data Element Name	Data Dictionary Description	Data Type	Data Length	List of Values	Responsible	Function	Ref	CD-0	CD-1	CD-2	CD-3A	CD-3	CD-4	Close out
001	Federal Agency Acronym [Level 0 of Hierarchy]	The official acronym for the federal agency that will use the application, such as “DOE”.	A/N	10	<u>Examples below:</u> DOE HHS CIA NSA Etc.	OECM	Project Identity	New	IR@CD	AN	AN				
002	Program [Level 1 of Hierarchy]	The official code (acronym) that identifies the DOE Program that is responsible for providing oversight for the project.	A/N	12	<u>Examples below:</u> BPA EERE EM FE LM NA NE OE RW SC SEPA SWPA WAPA	OECM	Project Identity	New	IR@CD	AN	AN				
003	Program Office [Level 2 of Hierarchy]	The name of the Program Office. Program Offices are a part of the DOE organizational structure and are positioned below the DOE Program. The Program Office can also have responsibility for managing a project	A/N	80	<u>Examples below:</u> Office of the Solar Energy Technology Program Office of Wind and Hydropower Technology Program Office of the Geothermal Technology Program Office of the Biomass Program	OECM	Project Identity	New	IR@CD	AN	AN				
004	Capital Asset Program Name [Level 3 of Hierarchy]	The name of the Capital Asset Program related to this project.	A/N	80	Need examples from OECM.	OECM	Project Identity	New	IR@CD	AN	AN				

Seq	Data Element Name	Data Dictionary Description	Data Type	Data Length	List of Values	Responsible	Function	Ref	CD-0	CD-1	CD-2	CD-3A	CD-3	CD-4	Close out
005	Capital Asset Program Description [Level 3 of Hierarchy]	A brief description e of the Capital Asset Program related to this project.	A/N	80	Need examples from OECM.	OECM	Project Identity	New	IR@CD	AN	AN				
006	PARS Project ID [Level 4 of Hierarchy]	The PARS Project ID is he official Project Identification Code for all projects contained in the PARS II database. The value of the PARS Project ID is be assigned automatically by PARS II when the project is created. Examples of PARS Project ID values are PARS-000001 and PARS-999999. The PARS II Project ID will be visible on all relevant screens and reports. To maintain compatibility with the Project ID used by Program Offices, OECM, PARS 1 and ART, PARS II will also display the DOE Project Number data element on many screens and reports.	A/N	30	PARS-000001 PARS-999999	OECM	Project Identity	New	IR@CD	AN	AN				
007	DOE Project Number [Level 4 of Hierarchy]	The DOE Project Number is the DOE Project Identification Code (e.g., 97-D-102) for construction and engineering design projects as reported in the OMB A-11 Exhibit 300 or the program budget submission. PARS II should display the DOE Project Number along-side the PARS Project ID on relevant screens and reports.	A/N	50		OECM	Project Identity	ART	IR@CD	AN	AN				
008	Project Name	The official name of the project as approved by the Acquisition Executive. (e.g., National Ignition Facility).	A/N	80	N/A	OECM	Project Identity	ART	IR@CD	AN	AN				
009	Project Acronym	The acronym or abbreviated name of the project (e.g., NIF).	A/N	15	Can be blank	OECM	Project Identity	PDIR	IR@CD	AN	AN				
010	Project Description	A brief description of the project's scope, schedule and budget.	A/N	1000	N/A	OECM	Project Identity	PDIR	IR@CD	AN	AN				
011	Project Type 1	The Project Type Code categorizes a project by major function, such as construction, remediation, disposition, major item of equipment, information technology, etc.	A/N	25	Approved Project Types: 1. Facility Construction 2. Infrastructure Improvements 3. Restoration or Remediation	OECM	Project Identity	PDIR	IR@CD	AN	AN				

Seq	Data Element Name	Data Dictionary Description	Data Type	Data Length	List of Values	Responsible	Function	Ref	CD-0	CD-1	CD-2	CD-3A	CD-3	CD-4	Close out
					4. Disposition 5. Information Technology 6. Plant 7. Major Items of Equipment 8. Decontamination & Decommissioning										
012	Project Type 2	The "Project Type 2" data element is a companion to the "Project Type 1" data element and indicates if the major function from Project Type 1 is a nuclear or non-nuclear project type.	A/N	1	- Nuclear - Non-Nuclear - Blank (empty)	OECM	Project Identity	New	IR@CD	AN	AN				
013	Project Activity Status	The current activity status of the project, such as Active, Completed, Cancelled or Other.	A/N	25	Active = the project is being tracked in PARS, has achieved CD-0 and has not achieved CD-4. Complete = the project is no longer being tracked in PARS and has achieved CD-4. Cancelled = the project is no longer being tracked in PARS and did not achieve CD-4. Other = the project is no longer a DOE 413 project, is not completed and is not cancelled.	OECM	Project Identity	PDIR	IR@CD	AN	AN	AN	AN	AN	
014	Project On Hold	The current on-hold status of a project	A	1	▪ Yes ▪ No (default = "No")	OECM	Project Identity	IPT	IR@CD	AN	AN	AN	AN	AN	
015	Project of Special Interest	Identifies this project as one of "special interest" to the DOE Secretary or Deputy Secretary.	Y/N	1	▪ Yes ▪ No (default = "No")	OECM	Project Identity	New	IR@CD	AN	AN	AN	AN	AN	

Seq	Data Element Name	Data Dictionary Description	Data Type	Data Length	List of Values	Responsible	Function	Ref	CD-0	CD-1	CD-2	CD-3A	CD-3	CD-4	Close out
016	Site Code	The alphanumeric abbreviation for Project Site (e.g., LLNL for Lawrence Livermore National Laboratory). Note that sites have only been set up for DOE facilities where projects are located. Field and Operation offices are not considered "physical sites." The site code table also contains a brief description for the site (e.g. Lawrence Livermore National Laboratory).	A/N	25	Dropdown	OECM	Project Identity	ART		IR@CD					
017	Project Location	Description of location within a site (e.g., TA3 at Los Alamos, H Area at SRS). The physical description, name and/or alphanumeric abbreviation assigned by the Field Office to identify an administrative subdivision of a site.	A/N	30	(e.g., TA3 at Los Alamos, H Area at SRS).	OECM	Project Identity	ART		IR@CD					
018	Prime Contractor Name	The name of the prime contractor responsible for overall management of the project.	A/N	50	Examples below: Bechtel Lockheed Martin Parsons	OECM	Project Responsibility	ART		IR@CD					
019	KPP Number	The unique, sequentially numeric identifier for each Key Performance Parameter (KPP)	N	3	1 2 3 4 5 6 Etc	OECM	KPPs	PDIR	UR@CD	UR@CD	IR@CD		UR@SE		
020	KPP Planned Scope	A brief narrative that describes the planned or intended characteristics, functions, requirements or design basis that, if changed, would have a major impact on the facility or system performance, schedule, cost and/or risk, or the ability of the interfacing project to meet its mission requirements. Update KPPs as the project progresses through planning and design stages.	A/N	256	Ten story concrete building with two elevators. Nuclear reactor with 500 MW of output power	OECM	KPPs	PDIR	UR@CD	UR@CD	IR@CD		UR@SE		
021	KPP Delivered Scope	A brief narrative that describes the actual, delivered Key Performance Parameter (KPP) for the project.	A/N	256	Ten story concrete building with three elevators.	OECM	KPPs	New						IR@CD	
022	KPP Validated	An indicator that tells if the Key Performance Parameter (KPP) was validated.	Y/N	1	Yes No (Default = No)	OECM	KPPs	New						IR@CD	
023	KPP Date Updated	The date that the KPP was updated.	Date	10	Data of data entry.	OECM	KPPs	New	UIR@CD	UR@CD	IR@CD	UR@CD	UR@SE	IR@CD	
024	KPP Updated By	The name of the person who updated the KPP.	A/N	30	Name will be taken from current name of data entry operator.	OECM	KPPs	New	UR@CD	UR@CD	IR@CD	UR@CD	UR@SE	IR@CD	

Seq	Data Element Name	Data Dictionary Description	Data Type	Data Length	List of Values	Responsible	Function	Ref	CD-0	CD-1	CD-2	CD-3A	CD-3	CD-4	Close out
025	Project Attachment Title	The title of the electronic document to be attached to the project. Note: documents to be attached must not be categorized as "sensitive" or "classified."	A/N	255	See list of approved attachments in Appendix Section of this document.	FPD OECM	Attachments	PDIR	IR@CD	UR@CD	UR@CD	UR@CD	UR@CD	UR@CD	UR@CD
026	Project Attachment File Name	The computer filename of the attachment.	A/N	50	Example: SEPB 20090515.doc	FPD PO OECM	Attachments	PDIR	IR@CD	UR@CD	UR@CD	UR@CD	UR@CD	UR@CD	UR@CD
027	Project Attachment URL	The hyperlink address of the attachment, once it has been stored on the PARS II Server.	A/N	50	N/A	PARS II	Attachments	PDIR	IR@CD	UR@CD	UR@CD	UR@CD	UR@CD	UR@CD	UR@CD
028	FPM Name	The full name of the Federal Project Manager assigned to this project.	A/N	80	Selected from dropdown box.	OECM	Project Responsibility	New		IR@CD	AN	AN	AN	AN	AN
029	FPM Certification Level	The current certification level of the Federal Program Manager	N	2	1,2,3,4,5	OECM	Certification	New		IR@CD	AN	AN	AN	AN	AN
030	FPM Certification Date	The date of the FPM Certification Event.	Date	10	mm/dd/yyyy	OECM	Certification	New		IR@CD	AN	AN	AN	AN	AN
031	FPM Certification Log	A list of historical records that shows one record for each certification event for the FPM; identifying the certification level and the date of the certification.	A/N	4000	N/A	Automatically generated by PARS II	Certification	New		IR@CD	AN	AN	AN	AN	AN
032	FPD Name	The full name of the Federal project Director (FPD) who is currently assigned to this project.	A/N	80	Selected from dropdown box.	OECM	Project Responsibility	ART		IR@CD	AN	AN	AN	AN	AN
033	FPD Certification Level	The current certification level of the Federal Project Director (e.g., Level 0, 1, 2, 3, 4).	A/N	100	Level 4: TPC exceeding \$400 million (M) Level 3: TPC greater than \$100M and equal to or less than \$400M Level 2: TPC greater than \$20M and equal to or less than \$100M Level 1: TPC greater than \$5M and equal to or less than \$20M. Level 0: FPD not certified.	OECM	Certification	PMET		IR@CD	AN	AN	AN	AN	AN
034	FPD Certification Date	The date of the FPD Certification Event.	Date	10	mm/dd/yyyy	OECM	Certification	New		IR@CD	AN	AN	AN	AN	AN
035	FPD Certification Log	A list of historical records that shows one record for each certification event for the FPD; identifying the certification level and the date of the certification.	A/N	4000	N/A	Automatically generated by PARS II	Certification	PMET		IR@CD	AN	AN	AN	AN	AN
036	Contractor Name	The name of the contractor currently assigned to this project	A/N	30	Selected from dropdown box.	OECM	Project Responsibility	New		IR@CD	AN	AN	AN	AN	AN

Seq	Data Element Name	Data Dictionary Description	Data Type	Data Length	List of Values	Responsible	Function	Ref	CD-0	CD-1	CD-2	CD-3A	CD-3	CD-4	Close out
037	Contractor EVMS Certification Status	The contractor's current EVMS certification status, such as Certified, Reviewed, Not Reviewed, Surveilled.	A/N	25	- Certified - Reviewed, - Not reviewed - Surveilled	OECM	Certification	ART		IR@CD	AN	AN	AN	AN	AN
038	Contractor EVMS Certification Date	A date, linked to the corresponding Certification Status event.	Date	10	mm/dd/yyyy	OECM	Certification	ART		IR@CD	AN	AN	AN	AN	AN
039	Contractor EVMS Log	A list of historical records that shows one record for each certification event for the contractor; identifying the certification status code and the date of the certification.	A/N	4000	N/A	Automatically generated by PARS II	Certification	New		IR@CD	AN	AN	AN	AN	AN
040	COR Name	The full name of the contract officer's representative currently assigned to this project	A/N	80	Selected from dropdown box.	OECM	Project Responsibility	New		IR@CD	AN	AN	AN	AN	AN
041	COR Certification Status	The Contract Officer Representative's current Certification Status.	A	1	<ul style="list-style-type: none"> ▪ Yes ▪ No (Default is No) 	OECM	Certification	New		IR@CD	AN	AN	AN	AN	AN
042	COR Certification Date	The certification date that corresponds to the related COR Certification event.	Date	10	mm/dd/yyyy	OECM	Certification	New		IR@CD	AN	AN	AN	AN	AN
043	COR Certification Log	A list of historical records that shows one record for each certification event for the Contracting Officer Representative; identifying the certification status code and the date of the certification event.	A/N	4000		Automatically generated by PARS II	Certification	New		IR@CD	AN	AN	AN	AN	AN
044	CD-0 Milestone ID	The unique identification code for each critical decision milestone (e.g., CD-1, CD-2, CD-3, etc).	A/N	12	CD-0	OECM	CD Structure	PDIR	IR@CD						
045	CD-1 Milestone ID	The unique identification code for each critical decision milestone (e.g., CD-1, CD-2, CD-3, etc).	A/N	12	CD-1	OECM	CD Structure	PDIR		IR@CD					
046	CD-2 Milestone ID	The unique identification code for each critical decision milestone (e.g., CD-1, CD-2, CD-3, etc).	A/N	12	CD-2	OECM	CD Structure	PDIR			IR@CD				
047	CD-3A Milestone ID	The unique identification code for each critical decision milestone (e.g., CD-1, CD-2, CD-3, etc).	A/N	12	CD-3A	OECM	CD Structure	PDIR				IR@CD			
048	CD-3 Milestone ID	The unique identification code for each critical decision milestone (e.g., CD-1, CD-2, CD-3, etc).	A/N	12	CD-3	OECM	CD Structure	PDIR					IR@CD		

Seq	Data Element Name	Data Dictionary Description	Data Type	Data Length	List of Values	Responsible	Function	Ref	CD-0	CD-1	CD-2	CD-3A	CD-3	CD-4	Close out
049	CD-4 Milestone ID	The unique identification code for each critical decision milestone (e.g., CD-1, CD-2, CD-3, etc).	A/N	12	CD-4	OECM	CD Structure	PDIR						IR@CD	
050	CD-5 Close-out Milestone ID	The unique identification code for each critical decision milestone (e.g., CD-1, CD-2, CD-3, etc).	A/N	12	Close-out	OECM	CD Structure	PDIR							IR@CD
051	CD-0 Milestone ID Suffix	The Milestone ID Suffix gives the Program Office the ability to append an alphanumeric value to the existing Milestone ID, to allow for tailoring of the milestone	A/N	4	Examples include: CD-3A CD--3AB CD-1A CD-2ABC CD-4XXX	OECM	CD Structure	New	IR@CD						
052	CD-1 Milestone ID Suffix	The Milestone ID Suffix gives the Program Office the ability to append an alphanumeric value to the existing Milestone ID, to allow for tailoring of the milestone	A/N	4	Examples include: CD-3A CD--3AB CD-1A CD-2ABC CD-4XXX		CD Structure	New							
053	CD-2 Milestone ID Suffix	The Milestone ID Suffix gives the Program Office the ability to append an alphanumeric value to the existing Milestone ID, to allow for tailoring of the milestone	A/N	4	Examples include: CD-3A CD--3AB CD-1A CD-2ABC CD-4XXX	OECM	CD Structure	New							
054	CD-3A Milestone ID Suffix	The Milestone ID Suffix gives the Program Office the ability to append an alphanumeric value to the existing Milestone ID, to allow for tailoring of the milestone	A/N	4	Examples include: CD-3A CD--3AB CD-1A CD-2ABC CD-4XXX	OECM	CD Structure	New							
055	CD-3 Milestone ID Suffix	The Milestone ID Suffix gives the Program Office the ability to append an alphanumeric value to the existing Milestone ID, to allow for tailoring of the milestone	A/N	4	Examples include: CD-3A CD--3AB CD-1A CD-2ABC CD-4XXX	OECM	CD Structure	New							
056	CD-4 Milestone ID Suffix	The Milestone ID Suffix gives the Program Office the ability to append an alphanumeric value to the existing Milestone ID, to allow for tailoring of the milestone	A/N	4	Examples include: CD-3A CD--3AB CD-1A CD-2ABC	OECM	CD Structure	New							

Seq	Data Element Name	Data Dictionary Description	Data Type	Data Length	List of Values	Responsible	Function	Ref	CD-0	CD-1	CD-2	CD-3A	CD-3	CD-4	Close out
					CD-4XXX										
057	CD-5 Close-out Milestone ID Suffix	The Milestone ID Suffix gives the Program Office the ability to append an alphanumeric value to the existing Milestone ID, to allow for tailoring of the milestone	A/N	4	Examples include: CD-3A CD--3AB CD-1A CD-2ABC CD-4XXX	OECM	CD Structure	New							
058	CD-0 Milestone ID Suffix Date	The date that the Milestone ID Suffix was appended to the Milestone ID.	D	10	Mm/dd/yyyy	OECM	CD Structure	New	IR@CD						
059	CD-1 Milestone ID Suffix Date	The date that the Milestone ID Suffix was appended to the Milestone ID.	D	10	Mm/dd/yyyy	OECM	CD Structure	New							
060	CD-2 Milestone ID Suffix Date	The date that the Milestone ID Suffix was appended to the Milestone ID.	D	10	Mm/dd/yyyy	OECM	CD Structure	New							
061	CD-3A Milestone ID Suffix Date	The date that the Milestone ID Suffix was appended to the Milestone ID.	D	10	Mm/dd/yyyy	OECM	CD Structure	New							
062	CD-4 Milestone ID Suffix Date	The date that the Milestone ID Suffix was appended to the Milestone ID.	D	10	Mm/dd/yyyy	OECM	CD Structure	New							
063	CD-5 Close-out ID Suffix Date	The date that the Milestone ID Suffix was appended to the Milestone ID.	D	10	Mm/dd/yyyy	OECM	CD Structure	New							IR@CD
064	CD-0 Milestone ID Suffix Narrative	A brief narrative that defines the meaning of the suffix and tells why the Milestone ID Suffix was added to the Milestone ID	A/N	255	N/A	OECM	CD Structure	New	IR@CD						
065	CD-1 Milestone ID Suffix Narrative	A brief narrative that defines the meaning of the suffix and tells why the Milestone ID Suffix was added to the Milestone ID	A/N	255	N/A	OECM	CD Structure	New							
066	CD-2 Milestone ID Suffix Narrative	A brief narrative that defines the meaning of the suffix and tells why the Milestone ID Suffix was added to the Milestone ID	A/N	255	N/A	OECM	CD Structure	New							
067	CD-3A Milestone ID Suffix Narrative	A brief narrative that defines the meaning of the suffix and tells why the Milestone ID Suffix was added to the Milestone ID	A/N	255	N/A	OECM	CD Structure	New							
068	CD-3 Milestone ID Suffix Narrative	A brief narrative that defines the meaning of the suffix and tells why the Milestone ID Suffix was added to the Milestone ID	A/N	255	N/A	OECM	CD Structure	New							
069	CD-4 Milestone ID Suffix Narrative	A brief narrative that defines the meaning of the suffix and tells why the Milestone ID Suffix was added to the Milestone ID	A/N	255	N/A	OECM	CD Structure	New							
070	CD-5 Milestone ID Suffix Narrative	A brief narrative that defines the meaning of the suffix and tells why the Milestone ID Suffix was added to the Milestone ID	A/N	255	N/A	OECM	CD Structure	New							
071	CD-0 Milestone Title	The official title of the Critical Decision Milestone.	A/N	256	Approve Mission Need	OECM	CD Structure	PDIR	IR@CD						

Seq	Data Element Name	Data Dictionary Description	Data Type	Data Length	List of Values	Responsible	Function	Ref	CD-0	CD-1	CD-2	CD-3A	CD-3	CD-4	Close out
072	CD-1 Milestone Title	The official title of the Critical Decision Milestone.	A/N	256	Approve Alternative Selection and Cost Range	OECM	CD Structure	PDIR							
073	CD-2 Milestone Title	The official title of the Critical Decision Milestone.	A/N	256	Approve Performance Baseline	OECM	CD Structure	PDIR							
074	CD-3A Milestone Title	The official title of the Critical Decision Milestone.	A/N	256	Approve Start of Construction" (sub-title should be appended here)	OECM	CD Structure	New							
075	CD-3 Milestone Title	The official title of the Critical Decision Milestone.	A/N	256	Approve Start of Construction	OECM	CD Structure	PDIR							
076	CD-4 Milestone Title	The official title of the Critical Decision Milestone.	A/N	256	Approve Start of Operations or Project Completion	OECM	CD Structure	PDIR							
077	CD-5 Close-out Milestone Title	The official title of the Critical Decision Milestone.	A/N	256	Approve Project Close-out	OECM	CD Structure	PDIR							
078	CD-0 Milestone Date Planned	The planned date in which the Critical Decision Milestone is expected to be met	Date	10	mm/dd/yyyy	OECM	CD Plan & Actual Dates	PDIR							
079	CD-1 Milestone Date Planned	The planned date in which the Critical Decision Milestone is expected to be met	Date	10	mm/dd/yyyy	OECM	CD Plan & Actual Dates	PDIR							
080	CD-2 Milestone Date Planned	The planned date in which the Critical Decision Milestone is expected to be met	Date	10	mm/dd/yyyy	OECM	CD Plan & Actual Dates	PDIR							
081	CD-3A Milestone Date Planned	The planned date in which the Critical Decision Milestone is expected to be met	Date	10	mm/dd/yyyy	OECM	CD Plan & Actual Dates	New							
082	CD-3 Milestone Date Planned	The planned date in which the Critical Decision Milestone is expected to be met	Date	10	mm/dd/yyyy	OECM	CD Plan & Actual Dates	PDIR							
083	CD-4 Milestone Date Planned	The planned date in which the Critical Decision Milestone is expected to be met	Date	10	mm/dd/yyyy	OECM	CD Plan & Actual Dates	PDIR							
084	CD-5 Close-out Milestone Date Planned	The planned date in which the Critical Decision Milestone is expected to be met	Date	10	mm/dd/yyyy	OECM	CD Plan & Actual Dates	PDIR							
085	CD-0 Milestone Date Actual	The actual date that the Critical Decision Milestone was met.	Date	10	mm/dd/yyyy	OECM	CD Plan & Actual Dates	PDIR							
086	CD-1 Milestone Date Actual	The actual date that the Critical Decision Milestone was met.	Date	10	mm/dd/yyyy	OECM	CD Plan & Actual Dates	PDIR							
087	CD-2 Milestone Date Actual	The actual date that the Critical Decision Milestone was met.	Date	10	mm/dd/yyyy	OECM	CD Plan & Actual Dates	PDIR							
088	CD-3A Milestone Date Actual	The actual date that the Critical Decision Milestone was met.	Date	10	mm/dd/yyyy	OECM	CD Plan & Actual Dates	PDIR							
089	CD-3 Milestone Date Actual	The actual date that the Critical Decision Milestone was met.	Date	10	mm/dd/yyyy	OECM	CD Plan & Actual Dates	PDIR							

Seq	Data Element Name	Data Dictionary Description	Data Type	Data Length	List of Values	Responsible	Function	Ref	CD-0	CD-1	CD-2	CD-3A	CD-3	CD-4	Close out
090	CD-4 Milestone Date Actual	The actual date that the Critical Decision Milestone was met.	Date	10	mm/dd/yyyy	OECM	CD Plan & Actual Dates	PDIR							
091	CD-5 Close-out Milestone Date Actual	The actual date that the Critical Decision Milestone was met.	Date	10	mm/dd/yyyy	OECM	CD Plan & Actual Dates	PDIR							
092	CD-0 Milestone Approved By	The name of authority who approved the Critical Decision. Milestone	A/N	80	N/A	OECM	CD Plan & Actual Dates	PDIR							
093	CD-1 Milestone Approved By	The name of authority who approved the Critical Decision. Milestone	A/N	80	N/A	OECM	CD Plan & Actual Dates	PDIR							
094	CD-2 Milestone Approved By	The name of authority who approved the Critical Decision. Milestone	A/N	80	N/A	OECM	CD Plan & Actual Dates	PDIR							
095	CD-3A Milestone Approved By	The name of authority who approved the Critical Decision. Milestone	A/N	80	N/A	OECM	CD Plan & Actual Dates	PDIR							
096	CD-3 Milestone Approved By	The name of authority who approved the Critical Decision. Milestone	A/N	80	N/A	OECM	CD Plan & Actual Dates	PDIR							
097	CD-4 Milestone Approved By	The name of authority who approved the Critical Decision. Milestone	A/N	80	N/A	OECM	CD Plan & Actual Dates	PDIR							
098	CD-5 Close-out Milestone Approved By	The name of authority who approved the Critical Decision. Milestone	A/N	80	N/A	OECM	CD Plan & Actual Dates	PDIR							
099	CD-0 Milestone Narrative	A brief narrative that describes key activities or deliverables related to the preparation for approval of the critical decision. Include current issues or actions.	A/N	256	N/A	OECM	CD Plan & Actual Dates	PDIR							
100	CD-1 Milestone Narrative	A brief narrative that describes key activities or deliverables related to the preparation for approval of the critical decision. Include current issues or actions.	A/N	256	N/A	OECM	CD Plan & Actual Dates	PDIR							
101	CD-2 Milestone Narrative	A brief narrative that describes key activities or deliverables related to the preparation for approval of the critical decision. Include current issues or actions.	A/N	256	N/A	OECM	CD Plan & Actual Dates	PDIR							
102	CD-3A Milestone Narrative	A brief narrative that describes key activities or deliverables related to the preparation for approval of the critical decision. Include current issues or actions.	A/N	256	N/A	OECM	CD Plan & Actual Dates	New							
103	CD-3 Milestone Narrative	A brief narrative that describes key activities or deliverables related to the preparation for approval of the critical decision. Include current issues or actions.	A/N	256	N/A	OECM	CD Plan & Actual Dates	PDIR							
104	CD-4 Milestone Narrative	A brief narrative that describes key activities or deliverables related to the preparation for approval of the critical decision. Include current issues or actions.	A/N	256	N/A	OECM	CD Plan & Actual Dates	PDIR							
105	CD-5 Close-out Milestone Narrative	A brief narrative that describes key activities or deliverables related to the preparation for	A/N	256	N/A	OECM	CD Plan & Actual Dates	PDIR							

Seq	Data Element Name	Data Dictionary Description	Data Type	Data Length	List of Values	Responsible	Function	Ref	CD-0	CD-1	CD-2	CD-3A	CD-3	CD-4	Close out
		approval of the critical decision. Include current issues or actions.													
106	CD-0 TPC (low)	An estimate of Total Project Cost, at the low end of the range, as approved at CD-0.	N	12	N/A	OECM	CD Forecasting TPC & ECD	ART	IR@CD						
107	CD-0 TPC (high)	An estimate of Total Project Cost, at the high end of the range, as approved at CD-0.	N	12	N/A	OECM	CD Forecasting TPC & ECD	ART	IR@CD						
108	CD-0 CD-4 Date (low)	The estimated completion date at CD-4, at the low end of the range, as approved at CD-0.	D	10	N/A	OECM	CD Forecasting TPC & ECD	New	IR@CD						
109	CD-0 CD-4 Date (high)	The estimated completion date at CD-4, at the high end of the range, as approved at CD-0.	D	10	N/A	OECM	CD Forecasting TPC & ECD	New	IR@CD						
110	CD-1 TPC (low)	An estimate of Total Project Cost, at the low end of the range, as approved at CD-1.	N	12	N/A	OECM	CD Forecasting TPC & ECD	ART		IR@CD					
111	CD-1 TPC (high)	An estimate of Total Project Cost, at the high end of the range, as approved at CD-1.	N	12	N/A	OECM	CD Forecasting TPC & ECD	ART		IR@CD					
112	CD-1 CD-4 Date (low)	The estimated completion date at CD-4, at the low end of the range, as approved at CD-1.	Date	10	N/A	OECM	CD Forecasting TPC & ECD	ART		IR@CD					
113	CD-1 CD-4 Date (high)	The estimated completion date at CD-4, at the high end of the range, as approved at CD-1.	Date	10	N/A	OECM	CD Forecasting TPC & ECD	New		IR@CD					
114	CD-2 TPC (low)	An estimate of Total Project Cost, at the low end of the range for the Performance Baseline at CD-2.	N	12		OECM	CD Forecasting TPC & ECD	New			IR@CD				
115	CD-2 TPC (high)	An estimate of Total Project Cost, at the high end of the range for the Performance Baseline at CD-2.	N	12		OECM	CD Forecasting TPC & ECD	PDIR			IR@CD				
116	CD-2 CD-4 Date (low)	The Estimated Completion Date at CD-4, at the low end of the range, for the Performance Baseline at CD-2. This data element is used for EM Cleanup projects.	D	10	Mm/dd/yyyy	OECM	CD Forecasting TPC & ECD	New			IR@CD				
117	CD-2 CD-4 Date (high)	The Estimated Completion Date at CD-4, at the high end of the range, for the Performance Baseline at CD-2.	D	10	Mm/dd/yyyy	OECM	CD Forecasting TPC & ECD	PDIR			IR@CD				
118	CD-2 Approved KPPs	The approved list of Key Performance Parameters (KPP) for the Performance Baseline at CD-2.	A/N	1000		OECM	Performance Baseline for CD-2	New			IR@CD				
119	CD-2 Original DOE Cost Contingency	The original amount set aside by DOE for Cost Contingency at CD-2. DOE Cost Contingency is the reserve budget held by DOE. For EM operations funded projects this contingency will be for the entire PBS and consistent with the project baseline validated at CD-2.	N	12	N/A	OECM	Performance Baseline for CD-2	ART			IR@CD				

Seq	Data Element Name	Data Dictionary Description	Data Type	Data Length	List of Values	Responsible	Function	Ref	CD-0	CD-1	CD-2	CD-3A	CD-3	CD-4	Close out
120	CD-2 Unfunded DOE Cost Contingency	The unfunded DOE Cost Contingency amount set aside at CD-2. This data element contains the difference between the TPC High and TPC Low at CD-2 for EM Cleanup projects only.	N	12	N/A	OECM	Performance Baseline for CD-2	New			IR@CD				
121	CD-2 Original DOE Schedule Contingency	The original amount of schedule contingency, expressed in days, set aside for the project by DOE at CD-2. Schedule Contingency is the total float in calendar days planned for this project. For EM operations funded projects schedule contingency will be for the entire PBS and will be consistent with the project baseline validated at CD-2.	N	4		OECM	Performance Baseline for CD-2	PDIR			IR@CD				
122	CD-2 Original Management Reserve	The original amount of Management Reserve allocated to the contractor at CD-2.	N	12	N/A	OECM	Performance Baseline for CD-2	NEW			IR@CD				
123	CD-2 Original Contractor Fee/Profit	The original amount of Fee or Profit set aside by DOE at CD-2	N	12	N/A	OECM	Performance Baseline for CD-2	NEW			IR@CD				
124	CD-2 Non-Contract Costs	Non-contract costs identified at CD-2.	N	12		OECM	Performance Baseline for CD-2	NEW			IR@CD				
125	CD-2 PMB	The approved contractor Performance Measurement Baseline (PMB) at CD-2	N	12		OECM	Performance Baseline for CD-2	New			IR@CD				
126	CD-3A Approved Scope	The approved scope for EM projects art CD-3A.	A/N	256		OECM	CD for EM	New				IR@CD			
127	CD-3A Approved Cost	The approved cost for EM projects at CD-3A.	N	12		OECM	CD for EM	New				IR@CD			
128	CD-4 TPC (high)	An estimate of Total Project Cost, at the high end of the range, made at CD-4 Approval.	N	12		OECM	CD Forecasting TPC & ECD	New						IR@CD	
129	CD-4 KPP Scope Narrative at Completion	A brief narrative done at the completion of the project that verifies the completed scope against the approved scope. KPPs at CD-4 must equal KPP's at CD-2.	A/N	4000	N/A	OECM	CD for KPPs at Completion	PDIR						IR@CD	
130	CD-5 Actual Cost at Financial Close-out	The final cost of the project when financial closure has been obtained.	N	12	N/A	OECM	CD for Close-out	ART							IR@CD
131	DOE Cost Contingency Used This Period	The amount of DOE Cost contingency used by the project this month.	N	12	N/A	FPD	Monthly Status	ART			RM	RM	RM	RM	
132	Remaining DOE Cost Contingency	The calculated, remaining amount of DOE Cost Contingency.	N	12	N/A	PARS II	Monthly Status	ART			RM	RM	RM	RM	
133	DOE Schedule Contingency Used This Period	The amount of DOE Schedule Contingency, expressed in calendar days, that was used by the project during the month.	N	4		FPD	Monthly Status	PDIR			RM	RM	RM	RM	
134	Remaining DOE Schedule Contingency	The number of days of DOE Schedule Contingency remaining for the project.	N	4	N/A	PARS II	Monthly Status	PDIR			RM	RM	RM	RM	

Seq	Data Element Name	Data Dictionary Description	Data Type	Data Length	List of Values	Responsible	Function	Ref	CD-0	CD-1	CD-2	CD-3A	CD-3	CD-4	Close out
135	Contractor Fee/Profit Used This Period	The amount of Contractor Fee/Profit used this period.	N	12	N/A	FPD	Monthly Status	New			RM	RM	RM	RM	
136	Remaining Contractor Fee/Profit	The remaining Contractor Fee/Profit.	N	12	N/A	PARS II	Monthly Status	New			RM	RM	RM	RM	
137	Contractor Management Reserve Used This Period	The amount of Management Reserve used this month.	N	12	March 30, 2009 - Sites not using the PARS CPP module may use this data element to enter this data on a manual basis.	FPD	Monthly Status	New			RM	RM	RM	RM	
138	Remaining Management Reserve	The calculated, remaining amount of Management Reserve.	N	12	March 30, 2009 - Sites not using the PARS CPP module may use this data element to enter this data on a manual basis.	PARS II	Monthly Status	New			RM	RM	RM	RM	
139	Monthly Status Reporting Date	The fiscal year (MM/YYYY) and calendar month for reporting status or writing assessments. This data element is updated by the author before writing or updating monthly status information. MM/YYYY	Date	10	N/A	FPD	Monthly Status	ART			RM	RM	RM	RM	
140	FPD Status Assessment	A brief narrative on the current project status, describing recent developments, comments, clarifications, or concerns relating to the project. Describe issues that need to be addressed at the Program and/or the Department level (e.g., risks encountered that will potentially require contingency held by DOE, assumptions in the project baseline that are not valid and could result in potential delays or cost overruns).	A/N	4000	N/A	FPD	Monthly Status	PDIR			RM	RM	RM	RM	
141	FPD Status Assessment Indicator (R/Y/G)	A color assigned to the red, yellow, green performance indicator that indicates the overall condition of the assessment.	Object	1	R, Y, G	FPD	Monthly Status	PDIR			RM	RM	RM	RM	
142	FPD Corrective Action Plan	A narrative from the FPD that describes the corrective action plan expected to bring the project back on schedule, cost or other parameter.	A/N	4000	N/A	FPD	Monthly Status	NEW			RM	RM	RM	RM	
143	Delete this Data Element PD Project Upcoming Events ID	A unique, sequential number that identifies the specific narrative, in order, for each of the upcoming events.			On April 28, 2009, OECM (JM) requested that this data element be deleted.	FPD	Monthly Status	PMET							
144	Delete this Data Element FPD Project Upcoming Events Narrative	Brief narrative that describes an upcoming event that should be brought to the attention of senior DOE management. This narrative to be shown on the DepSec Report			On April 28, 2009, OECM (JM) requested that this data element be deleted.	FPD	Monthly Status	PMET							
145	FPD Forecasted Month to Achieve Green	The calendar year and month that the FPD believes that issues will be resolved and the project will return to a status of "green". MM/YYYY	Date	10	N/A	FPD	Monthly Status	PMET			RM	RM	RM	RM	

Seq	Data Element Name	Data Dictionary Description	Data Type	Data Length	List of Values	Responsible	Function	Ref	CD-0	CD-1	CD-2	CD-3A	CD-3	CD-4	Close out
146	FPD Forecasted Completion Date	The data that the FPD expects the project to be completed. mm/dd/yyyy	Date	10	N/A	FPD	Monthly Status	PMET			RM	RM	RM	RM	
147	FPD Forecasted Total Project Cost (TPC)	The FPD's estimate for Total Project Cost	N	12	N/A	FPD	Monthly Status	PMET			RM	RM	RM	RM	
148	PO Status Assessment	A brief narrative on the current project status, describing recent developments, comments, clarifications, or concerns relating to the project. Describe issues that need to be addressed at the Program and/or the Department level (e.g., risks encountered that will potentially require contingency held by DOE, assumptions in the project baseline that are not valid and could result in potential delays or cost overruns).	A/N	4000	N/A	PO	Monthly Status	NEW			RM	RM	RM	RM	
149	PO Status Assessment Indicator (R/Y/G)	A color assigned to the red, yellow, green performance indicator that indicates the overall condition of the assessment.	Object	1	R,Y,G	PO	Monthly Status	NEW			RM	RM	RM	RM	
150	PO Progress Assessment	Narrative from the PO identifying progress made towards Green.	A/N	4000	N/A	PO	Monthly Status	New			RM	RM	RM	RM	
151	PO Progress Assessment Indicator (R/Y/G)	A color assigned to the red, yellow, green performance indicator that indicates the overall progress of the assessment.	Object	1	R,Y,G	PO	Monthly Status	New			RM	RM	RM	RM	
152	PO Overall Assessment	A narrative of the PO's final and overall assessment of the project for the reporting period.	A/N	4000	N/A	PO	Monthly Status	New			RM	RM	RM	RM	
153	PO Forecasted Month to Achieve Green	The calendar year and month that the PO believes that issues will be resolved and the project will return to a status of "green". MM/YYYY	Date	10	N/A	PO	Monthly Status	New			RM	RM	RM	RM	
154	PO Forecasted TPC	The PO Analyst's estimate for Total Project Cost	N	12	N/A	PO	Monthly Status	New			RM	RM	RM	RM	
155	PO Forecasted CD-4 Date	The PO Analyst's estimate for construction completion date at CD-4. MM/DD/YYYY	Date	12	N/A	PO	Monthly Status	New			RM	RM	RM	RM	
156	OECM Status Assessment	A brief narrative on the current project status, describing recent developments, comments, clarifications, or concerns relating to the project. Describe issues that need to be addressed at the Program and/or the Department level (e.g., risks encountered that will potentially require contingency held by DOE, assumptions in the project baseline that are not valid and could result in potential delays or cost overruns). OECM will use this data element to explain the color-coded assessments (Red, Yellow, Green) and other information as shown on the Monthly Report to the Deputy Secretary..	A/N	4000	N/A	OECM	Monthly Status	PMET			RM	RM	RM	RM	

Seq	Data Element Name	Data Dictionary Description	Data Type	Data Length	List of Values	Responsible	Function	Ref	CD-0	CD-1	CD-2	CD-3A	CD-3	CD-4	Close out
157	OECM Status Assessment Indicator (R/Y/G)	A color assigned to the red, yellow, green performance indicator that indicates the overall condition of the assessment.	Object	1	R,Y,G	OECM	Monthly Status	PMET			RM	RM	RM	RM	
158	OECM Progress Assessment	Narrative from the OECM identifying progress made towards Green.	A/N	4000	N/A	OECM	Monthly Status	PMET			RM	RM	RM	RM	
159	OECM Progress Assessment Indicator (R/Y/G)	A color assigned to the red, yellow, green performance indicator that indicates the overall progress of the assessment.	Object	1	R,Y,G	OECM	Monthly Status	PMET			RM	RM	RM	RM	
160	OECM Overall Assessment	A narrative of the OECM's final and overall assessment of the project for the reporting period. This narrative goes on the DepSec Report.	A/N	4000	N/A	OECM	Monthly Status	ART			RM	RM	RM	RM	
161	OECM Forecasted Month to Achieve Green	The calendar year and month that the OECM believes that issues will be resolved and the project will return to a status of "green". MM/YYYY	Date	10	N/A	OECM	Monthly Status	ART			RM	RM	RM	RM	
162	OECM Forecasted TPC	The OECM Analyst's estimate for Total Project Cost	N	12	N/A	OECM	Monthly Status	ART			RM	RM	RM	RM	
163	OECM Forecasted Construction Completion Date at CD-4	The OECM Analyst's estimate for construction completion date at CD-4. MM/DD/YYYY	Date	12	N/A	OECM	Monthly Status	PMET			RM	RM	RM	RM	
164	OECM Analyst Detailed Comments	A detailed narrative, kept by the OECM Analyst that contains ongoing narrative about the project. This data should not be made available for reporting.	A/N	4000	N/A	OECM	Monthly Status	ART			RM	RM	RM	RM	
165	PB Version Number	The unique and sequential Baseline Version Number for each record (i.e. each new version of the baseline) in the Baseline Version Table.	A/N	12	BP-001 BP-002 etc	OECM	Performance Baseline (BCPs)	PDIR			UR@SE	UR@SE	UR@SE	UR@SE	
166	PB Title	The title given to the baseline change, such as "Congressional Baseline".	A/N	50	N/A	OECM	Performance Baseline (BCPs)	PDIR			UR@SE	UR@SE	UR@SE	UR@SE	
167	PB Approval Date	The date that the PB was approved by the approving official. MM/DD/YYYY	Date	12	N/A	OECM	Performance Baseline (BCPs)	PDIR			UR@SE	UR@SE	UR@SE	UR@SE	
168	PB Approving Official Name	The name of the approving official that approved the PB.	A/N	50	N/A	OECM	Performance Baseline (BCPs)	PDIR			UR@SE	UR@SE	UR@SE	UR@SE	
169	PB Change Submission Date	The date that the request for the change to the PB was made. mm/dd/yyyy	Date	12	N/A	OECM	Performance Baseline (BCPs)	PDIR			UR@SE	UR@SE	UR@SE	UR@SE	
170	PB Change Directed? (Y/N)	A flag (Yes/No) that indicates if the change to the PB was directed by OE.	Y/N	1	Yes No	OECM	Performance Baseline (BCPs)	PDIR			UR@SE	UR@SE	UR@SE	UR@SE	
171	PB Change in Cost	If the baseline change accompanies a change in cost, the system calculates the change in the dollar value of the approved change (positive or negative) between the current TPC (High) and the new TPC (High).	N	12	N/A	PARS II	Performance Baseline (BCPs)	PDIR			UR@SE	UR@SE	UR@SE	UR@SE	
172	PB Change in Schedule	If the baseline change accompanies a change in schedule, the system calculates the change in	N	6	N/A	PARS II	Performance Baseline (BCPs)	PDIR			UR@SE	UR@SE	UR@SE	UR@SE	

Seq	Data Element Name	Data Dictionary Description	Data Type	Data Length	List of Values	Responsible	Function	Ref	CD-0	CD-1	CD-2	CD-3A	CD-3	CD-4	Close out
		calendar days of approved change (positive or negative) that the schedule will be extended or reduced, between the current Approved CD4 Date High and the new CD4 Date High.													
173	PB Change in KPPs	If the baseline change accompanies a change in key performance parameters, describe the changes between the original approved KPPs and the current KPPs.	A/N	1000		OECM	Performance Baseline (BCPs)	New			UR@SE	UR@SE	UR@SE	UR@SE	
174	PB Narrative	The official text in the Performance Baseline approval document that summarizes the cost, schedule and scope elements for the project.	N	12		OECM	Performance Baseline (BCPs)	New			UR@SE	UR@SE	UR@SE	UR@SE	
175	PB TPC (high)	The high end of the range for Total Project Cost as identified in the approval document for the Performance Baseline.	N	12		OECM	Performance Baseline (BCPs)	New			UR@SE	UR@SE	UR@SE	UR@SE	
176	PB TPC (low)	The low end of the range for Total Project Cost as identified in the approval document for the Performance Baseline.	N	12		OECM	Performance Baseline (BCPs)	New			UR@SE	UR@SE	UR@SE	UR@SE	
177	PB CD-4 Date (high)	The high end of the range for Estimated Completion Date at CD-4, as identified in the approval document for the Performance Baseline.	D	10	Mm/dd/yyyy	OECM	Performance Baseline (BCPs)	New			UR@SE	UR@SE	UR@SE	UR@SE	
178	PB CD-4 Date (low)	The low end of the range for Estimated Completion Date at CD-4, as identified in the approval document for the Performance Baseline.	D	10	Mm/dd/yyyy	OECM	Performance Baseline (BCPs)	New			UR@SE	UR@SE	UR@SE	UR@SE	
179	PB KPPs	The official text that describes the most important scope elements for the project, as identified in the approval document for the Performance Baseline.	A/N	1000	Narrative list of KPPs	OECM	Performance Baseline (BCPs)	New			UR@SE	UR@SE	UR@SE	UR@SE	
180	PB DOE Schedule Contingency	The approved total number of days of DOE Schedule Contingency for the Performance Baseline.	N	12		OECM	Performance Baseline (BCPs)	New			UR@SE	UR@SE	UR@SE	UR@SE	
181	PB DOE Cost Contingency	The approved total DOE Cost Contingency for the Performance Baseline.	N	12		OECM	Performance Baseline (BCPs)	New			UR@SE	UR@SE	UR@SE	UR@SE	
182	PB Unfunded DOE Cost Contingency	The approved, unfunded DOE Cost Contingency or the Performance Baseline. This data element contains the difference between the TPC High and TPC Low at CD-2 for EM Cleanup projects only.	N	12	N/A	OECM	Performance Baseline (BCPs)	New			UR@SE	UR@SE	UR@SE	UR@SE	
183	PB Contractor Management Reserve	The approved total Contractor Management Reserve dollar amount for this performance baseline event.	N	12		OECM	Performance Baseline (BCPs)	New			UR@SE	UR@SE	UR@SE	UR@SE	
184	PB Contractor Fee/Profit	The approved total Contractor Fee/Profit dollar amount for this performance baseline event.	N	12		OECM	Performance Baseline (BCPs)	New			UR@SE	UR@SE	UR@SE	UR@SE	

Seq	Data Element Name	Data Dictionary Description	Data Type	Data Length	List of Values	Responsible	Function	Ref	CD-0	CD-1	CD-2	CD-3A	CD-3	CD-4	Close out
185	PB Non-Contract Costs	Non-contract costs includes DOE direct costs for the project	N	12		OECM	Performance Baseline (BCPs)	NEW			UR@SE	UR@SE	UR@SE	UR@SE	
186	PB PMB	The contractor's current Performance Measurement Baseline (PMB)	N	12		OECM	Performance Baseline (BCPs)	NEW			UR@SE	UR@SE	UR@SE	UR@SE	
187	Budget Fiscal Year	The fiscal year of the President's Congressional Budget request (CRB). (YYYY)	Date	4	N/A	OECM	Budget	PDIR			UR@SE	UR@SE	UR@SE	UR@SE	
188	Budget Source	The source of data for the budget profile, such as the DOE Integrated Priority List, OMB, Congress, or the Performance Baseline	A/N	256	Dropdown List of Values: DOE Integrated Priority List, OMB, Congress, Performance Baseline	OECM	Budget	PDIR			UR@SE	UR@SE	UR@SE	UR@SE	
189	TEC (Design)	The total Project Engineering Design portion in the Budget Request.	N	12		OECM	Budget	PDIR			UR@SE	UR@SE	UR@SE	UR@SE	
190	TEC (Construction)	Enter the Total Estimated Construction cost estimated for the project. (Note: this will be inclusive of any LLI funds).	N	12		OECM	Budget	PDIR			UR@SE	UR@SE	UR@SE	UR@SE	
191	OPC Excluding D&D	Enter total Other Project Costs (e.g. Pre-Conceptual Design and Start-up).	N	12		OECM	Budget	PDIR			UR@SE	UR@SE	UR@SE	UR@SE	
192	D&D Costs	Enter the total cost for D&D associated with the construction project OECM pending decision.	N	12		OECM	Budget	PDIR			UR@SE	UR@SE	UR@SE	UR@SE	
193	Operations	If the project includes operations, enter the total life cycle Operations Cost. Operations costs are for plant operations and are not to be confused with operations funds required as "OPCs" for line-item projects. (Many EM clean-up projects will only have Operations costs). This does not include operations costs after CD-4.	N	12		OECM	Budget	PDIR			UR@SE	UR@SE	UR@SE	UR@SE	
194	DOE Project ID for Upload File	The project identifier for the upload file, to be compared to the PARS Project ID and the DOE Project Number for validation	A/N	50		CONTR	Project Upload (CPP)	New			RM	RM	RM	RM	
195	FPD Has Reviewed CPP	Indicates that the FPD has reviewed the current project upload file.	Y/N	1	Yes No	FPD	Monthly Status	New			RM	RM	RM	RM	
196	BCWS Incremental	Budgeted Cost of Work Scheduled (BCWS) or Planned Value (PV) is the budget for the planned scope that is scheduled to be accomplished during the month. BCWS is the monthly planned accomplishment established in the project baseline. Enter the Monthly BCWS through project completion. BCWS must flow from the approved baseline at CD-2.	N	12	N/A	CONTR	Project Upload (CPP)	ART			IR@CD				

Seq	Data Element Name	Data Dictionary Description	Data Type	Data Length	List of Values	Responsible	Function	Ref	CD-0	CD-1	CD-2	CD-3A	CD-3	CD-4	Close out
197	BCWS Cumulative	Budgeted Cost of Work Scheduled (BCWS) or Planned Value (PV) is the budget for the planned scope that is scheduled to be accomplished during the cumulative period.	N	12	N/A	CONTR	Project Upload (CPP)	NEW			IR@CD				
198	BCWP Incremental	The Budgeted Cost of Work Performed (BCWP) or the Earned Value (EV) for the indicated month BCWP is the sum of all budgets for all completed work and the completed portions of ongoing work. BCWP is the total budget (in dollars) for the scope that was actually accomplished during the month.	N	12		CONTR	Project Upload (CPP)	ART			RM	RM	RM	RM	
199	BCWP Cumulative	The Budgeted Cost of Work Performed (Cum) or Earned Value (Cum) for the project-to-date. BCWP (Cum) is the sum of all budgets for all completed work and the completed portions of ongoing work. BCWP (Cum) is the total budget, in dollars, for the scope that was actually accomplished during the project-to-date period.	N	12		CONTR	Project Upload (CPP)	NEW			RM		RM	RM	
200	ACWP Incremental	The Actual Cost of Work Performed (ACWP) for the month. ACWP is the actual cost incurred for the work accomplished during the month and is based on actual expenses accrued and not from financial reports.	N	12		CONTR	Project Upload (CPP)	ART			RM	RM	RM	RM	
201	ACWP Cumulative	The Actual Cost of Work Performed ACWP (Cum) for the Project-to-Date. This is the cumulative value over the project life.	N	12		CONTR	Project Upload (CPP)	NEW			RM		RM	RM	
202	BAC PMB	Enter the Budget at Completion (BAC), expressed in dollars, The BAC must equal the total of all BCWS entries for the entire life cycle of the project, BAC can be calculated or can be entered manually to validate the integrity of the BCWS profile.	N	12	N/A	CONTR	Project Upload (CPP)	NEW			IR@CD				
203	ETC – Bottoms Up	ETC is the bottoms-up estimate to complete the project, as expressed in dollars. Estimate To Complete is the current estimate of costs to complete all work from a point in time to the end of the project or program.	N	12	N/A	CONTR	Project Upload (CPP)	ART			RA	RA	RA	RA	
204	ETC - Bottoms Up Date	The date that the bottoms up estimate to complete exercise was made.	Date	10	N/A	CONTR	Project Upload (CPP)	ART			RA	RA	RA	RA	
205	EAC	The estimate at completion (EAC) is the current estimated cost for program authorized work. EAC is calculated and represents the actual direct costs, plus indirect costs allocable to the contract, plus the estimate of costs (direct and	N		N/A	CONTR	Project Upload (CPP)	NEW			IR@CD	RM	RM	RM	

Seq	Data Element Name	Data Dictionary Description	Data Type	Data Length	List of Values	Responsible	Function	Ref	CD-0	CD-1	CD-2	CD-3A	CD-3	CD-4	Close out
		indirect) for authorized work remaining.													
206	Schedule Variance Narrative	The contractor's written narrative of schedule, as sourced from the control account level of the contractor's WBS. Give specific and most significant causes of variances, corrective actions being implemented, and recovery times. The narrative explanation must be clear, brief to the point and written to be understood by senior management – No abbreviations or acronyms are to be used. If the previously entered BCWS profile was changed for any reason an explanation must be provided in this narrative.	A/N	4000	N/A	CONTR	Project Upload (CPP)	NEW			RM	RM	RM	RM	
207	Cost Variance Narrative	The contractor's written narrative of cost variance, as sourced from the control account level of the contractor's WBS. Give specific and most significant causes of variances, corrective actions being implemented, and recovery times. The narrative explanation must be clear, brief to the point and written to be understood by senior management – No abbreviations or acronyms are to be used. If the previously entered BCWS profile was changed for any reason an explanation must be provided in this narrative.	A/N	4000	N/A	CONTR	Project Upload (CPP)	NEW			RM	RM	RM	RM	
208	Earned Value Narrative	The contractor's written narrative of earned value, as sourced from the control account level of the contractor's WBS. Give specific and most significant causes of variances, corrective actions being implemented, and recovery times. The narrative explanation must be clear, brief to the point and written to be understood by senior management – No abbreviations or acronyms are to be used. If the previously entered BCWS profile was changed for any reason an explanation must be provided in this narrative.	A/N	4000	N/A	CONTR	Project Upload (CPP)	NEW			RM	RM	RM	RM	
209	Risk Register Log DU	The contractor's risk log, as sourced from the contractor's scheduling system.	Object	64000	N/A	CONTR	Project Upload (CPP)	NEW			RM	RM	RM	RM	
210	Original Contractor Management Reserve	The initial or original amount of Management Reserve set aside for the project by DOE. For EM operations funded projects the MR will be for the current Near-Term project segment.	N	12	N/A	CONTR	Project Upload (CPP)	ART			IR@CD				
211	Contractor Management Reserve Used This Period DU	The amount of Management Reserve, expressed in dollars, used this period.	N	12	N/A	CONTR	Project Upload (CPP)	ART			RM	RM	RM	RM	

Seq	Data Element Name	Data Dictionary Description	Data Type	Data Length	List of Values	Responsible	Function	Ref	CD-0	CD-1	CD-2	CD-3A	CD-3	CD-4	Close out
212	Remaining Contractor Management Reserve	The remaining amount of Management Reserve, expressed in dollars. The Management Reserve Remaining (MRR) is the total contractor management reserve uncommitted on a project. It is the amount of the Contract Budget Baseline (CBB) with-held for contract control purposes, rather than assigned for the accomplishment of a specific task or set of tasks. It is not part of the Performance Management Baseline (PMB)	N	12		PARS II	Project Upload (CPP)	ART			RM		RM	RM	
213	Management Reserve Narrative	Text narrative, associated with the use of Management Reserve dollars for the period.	Text	4000	N/A	CONTR	Project Upload (CPP)	New			RM	RM	RM	RM	
214	Program POC	The full name of the Program Point of Contact who is currently assigned to the project.	A/N	80	Selected from dropdown box.	OECM	Project Responsibility	New		IR@CD	AN	AN	AN	AN	AN
215	OECM Analyst POC	The full name of the OECM Analyst who is currently assigned to the project.	A/N	80	Selected from dropdown box.	OECM	Project Responsibility	New		IR@CD	AN	AN	AN	AN	AN

APPENDIX

APPENDIX 1 – DOCUMENT ATTACHMENTS

PROPOSED DOCUMENT ATTACHMENTS for CD EVENTS

CD-0	
Document	Description
Mission Need Statement	Mandatory
Mission Validation Independent Project Review	Mandatory
Program Requirements Document	Mandatory for National Nuclear Security Administration only.
Tailoring Strategy	Optional, may be included in the Project Execution Plan at later Critical Decisions.

CD-1	
Document	Description
Acquisition Strategy	Mandatory
AE Delegation Memos	Mandatory
Conceptual Design Report	Mandatory
Conceptual Safety Design Report	Mandatory for Hazard Category 1, 2, and 3 nuclear projects.
Design Reviews	Mandatory
Environmental documents	Optional
ESAAB or equivalent Briefings and Approval Letters	Mandatory
FPD Appointment/ Approval/ Delegation Memo (initial and updates)	Mandatory
Integrated Project Team Charter	Mandatory
Preliminary Hazard Analysis Report	Mandatory for projects involving facilities that are below Hazard Category 3 threshold as defined in 10 CFR 830, Subpart B.
Preliminary Security Vulnerability Assessment Report	Mandatory for projects involving information systems
Project Data Sheet	Mandatory
Project Execution Plan	Mandatory
Safety Design Strategy	Mandatory

CD-1	
Document	Description
Technical Independent Project Review	Mandatory

CD-2	
Document	Description
AE Delegation Memos	Mandatory
Conceptual Safety Design Report - updates	Mandatory for Hazard Category 1, 2, and 3 nuclear projects
Conceptual Safety Validation Report	Mandatory for Hazard Category 1, 2, and 3 nuclear facilities.
FPD Appointment/ Approval/ Delegation Memo (initial and updates)	Mandatory
Hazard Analysis Report	Mandatory for projects involving facilities that are below Hazard Category 3 threshold as defined in 10 CFR 830, Subpart B. Updated Preliminary Hazard Analysis Report
Independent Cost Estimate	Mandatory
Independent Cost Review	Mandatory
Initial Cyber Security Plan	Mandatory for IT projects
Preliminary Design	Mandatory
Preliminary Hazard Analysis Report - updates	Mandatory for projects involving facilities that are below Hazard Category 3 threshold as defined in 10 CFR 830, Subpart B.
Preliminary Safety Design Report	Mandatory for Hazard Category 1, 2, and 3 nuclear projects
Preliminary Security Vulnerability Assessment Report	Mandatory for projects involving information systems
Program Baseline Validation Review	Mandatory
Project Data Sheet - updates	Mandatory
Project Execution Plan - updates	Mandatory
Safety Design Strategy - updates	Mandatory, part of the Project Execution Plan

CD-3	
Document	Description
AE Delegation Memos	Mandatory
Construction Project Safety and Health Plan	Mandatory
Cyber Security Plan	Mandatory for projects involving information

CD-3	
Document	Description
	systems.
External Independent Review for Construction or Execution Readiness	Mandatory
Final Design	Mandatory
FPD Appointment/ Approval/ Delegation Memo (initial and updates)	Mandatory
Hazard Analysis Report - updates	Mandatory for projects involving facilities that are below Hazard Category 3 threshold as defined in 10 CFR 830, Subpart B. Updated Preliminary Hazard Analysis Report
Preliminary Documented Safety Analysis	Mandatory Document that updates the safety information in the Preliminary Safety Design Report and identifies and justifies changes from the design approach described in the Preliminary Safety Design Report.
Preliminary Security Vulnerability Assessment Report - updates	Mandatory for projects involving information systems
Safety Design Strategy - updates	Mandatory, part of the Project Execution Plan
Safety Evaluation Report	Mandatory for a Hazard Category 1, 2, or 3 DOE nuclear facility.

CD-4	
Document	Description
AE Delegation Memos	Mandatory
Certification and Accreditation	Mandatory for projects involving information systems.
Checkout, Testing, and Commissioning Plan	Mandatory
Construction Project Safety and Health Plan - updates	Mandatory
Cyber Security Plan - updates	Mandatory for projects involving information systems.
Documented Safety Analysis	Mandatory for a Hazard Category 1, 2, or 3 DOE nuclear facility.
Hazard Analysis Report - updates	Mandatory for projects involving facilities that are below Hazard Category 3 threshold as defined in 10 CFR 830, Subpart B. Updated Preliminary Hazard Analysis Report
Key Performance Parameters	Mandatory

CD-4	
Document	Description
Verification Report	
Operational Readiness Review	Mandatory
Project Completion Criteria	Mandatory
Project Transition to Operations Plan	Mandatory
Readiness Assessment	Mandatory
Safety Evaluation Report - updates	Mandatory for a Hazard Category 1, 2, or 3 DOE nuclear facility.
Security Vulnerability Assessment Report	Mandatory for projects involving information systems

Post CD-4 and Closeout	
Document	Description
Final Project Closeout Report	Mandatory
Lessons Learned Report	Mandatory
Operational Documentation	Mandatory.
Post Implementation Review	Mandatory.

Other – Not Tied to a Specific CD Event	
Document	Description
Follow-up status on EIR/IPR findings where a corrective action plan was left open	Mandatory
Monthly Contractor Performance Reports/Status Reports	Mandatory
OECM Management Review Reports	Mandatory
Program Office Project Review Reports	Mandatory
Quarterly Performance Reports	Mandatory
Risk Management Plan/ Risk Assessments	Mandatory

Appendix II – Changes to Document

1. Date: April 28, 2009: John Makepeace request to delete “Upcoming Data Elements” # 143, 144
2. Date: April 28, 2009: John Makepeace instructed to change ownership of many data elements to “OECM”, with the exception of Monthly Status Reporting data elements.
3. Date: April 28, 2009: Inserted new Function column in table and removed the Table column and the Data Group column.