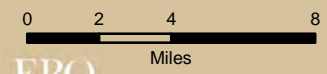


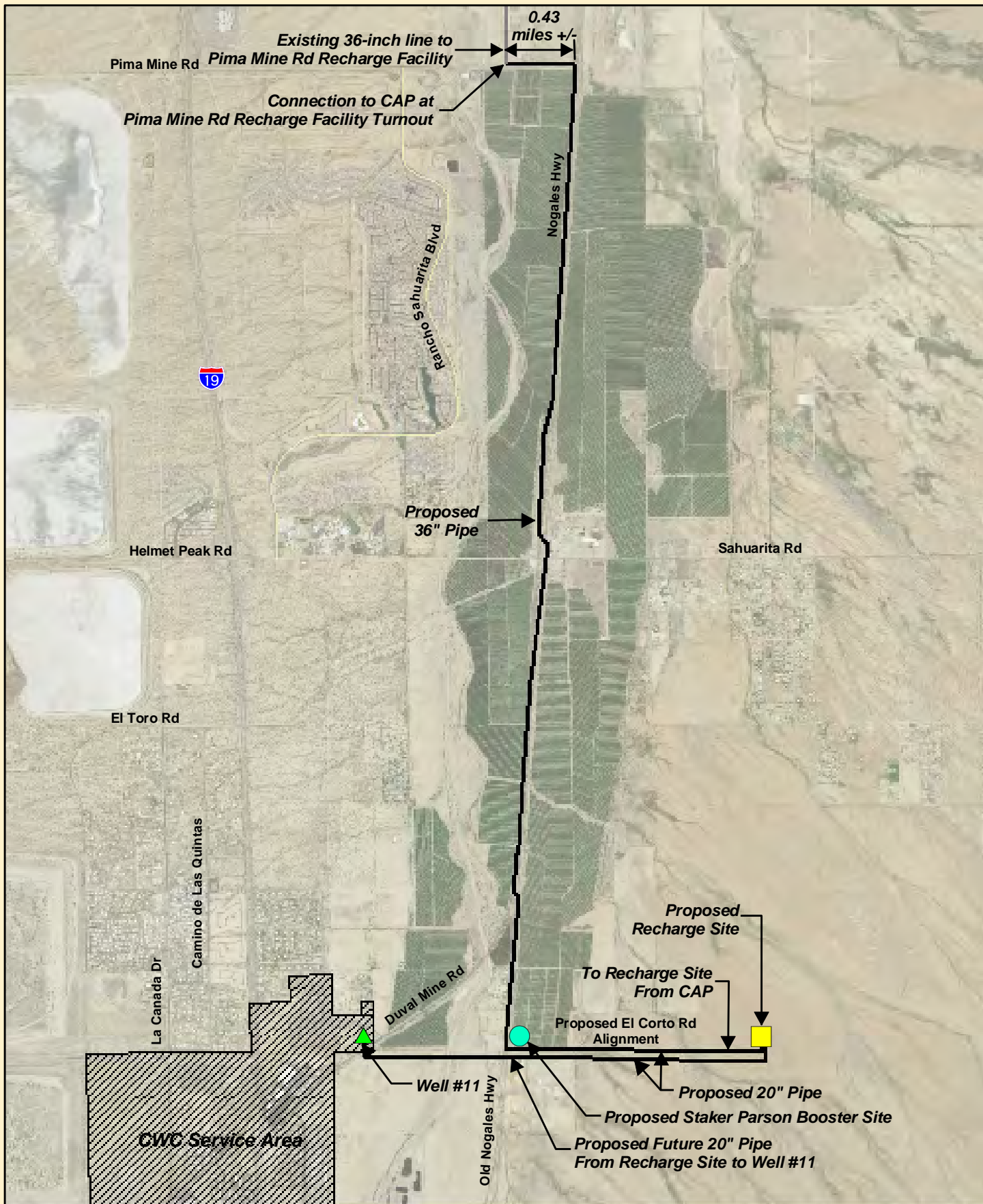
Figure 1
Location Map

CWC CAP
Water Delivery System



ERC
Stantec Consulting, Inc
201 North Bonita Avenue Suite 101
Tucson, AZ 85745-2999
www.stantec.com

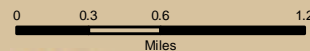




**Figure 2
Proposed Project
Components**

**CWC CAP
Water Delivery System**

Pima County Index Map



ERC



Stantec Consulting, Inc
201 North Bonita Avenue Suite 101
Tucson, AZ 85745-2999
www.stantec.com



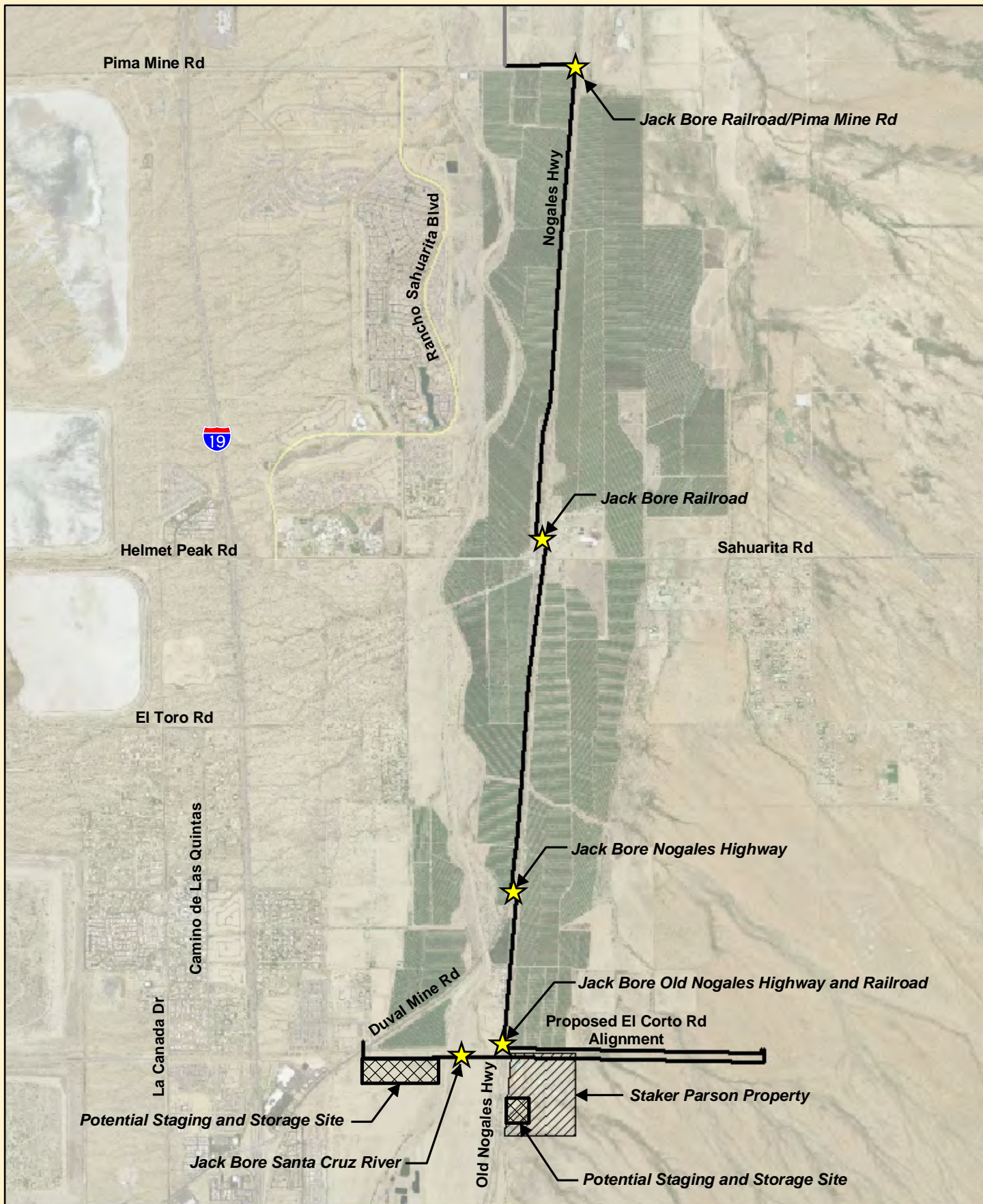
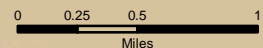


Figure 3
Proposed
Jack & Bore Locations
& Sites for Staging
& Storing Materials

CWC  **CAP**
Water Delivery
and Recharge Project

Pima County Index Map



ERO



Stantec Consulting, Inc
 201 North Bonita Avenue Suite 101
 Tucson, AZ 85745-2999
 www.Stantec.com



Posting Date: 12/8/2008
 File: W:\Project\1054\1054112\Drawings\erocap\erocap.dwg

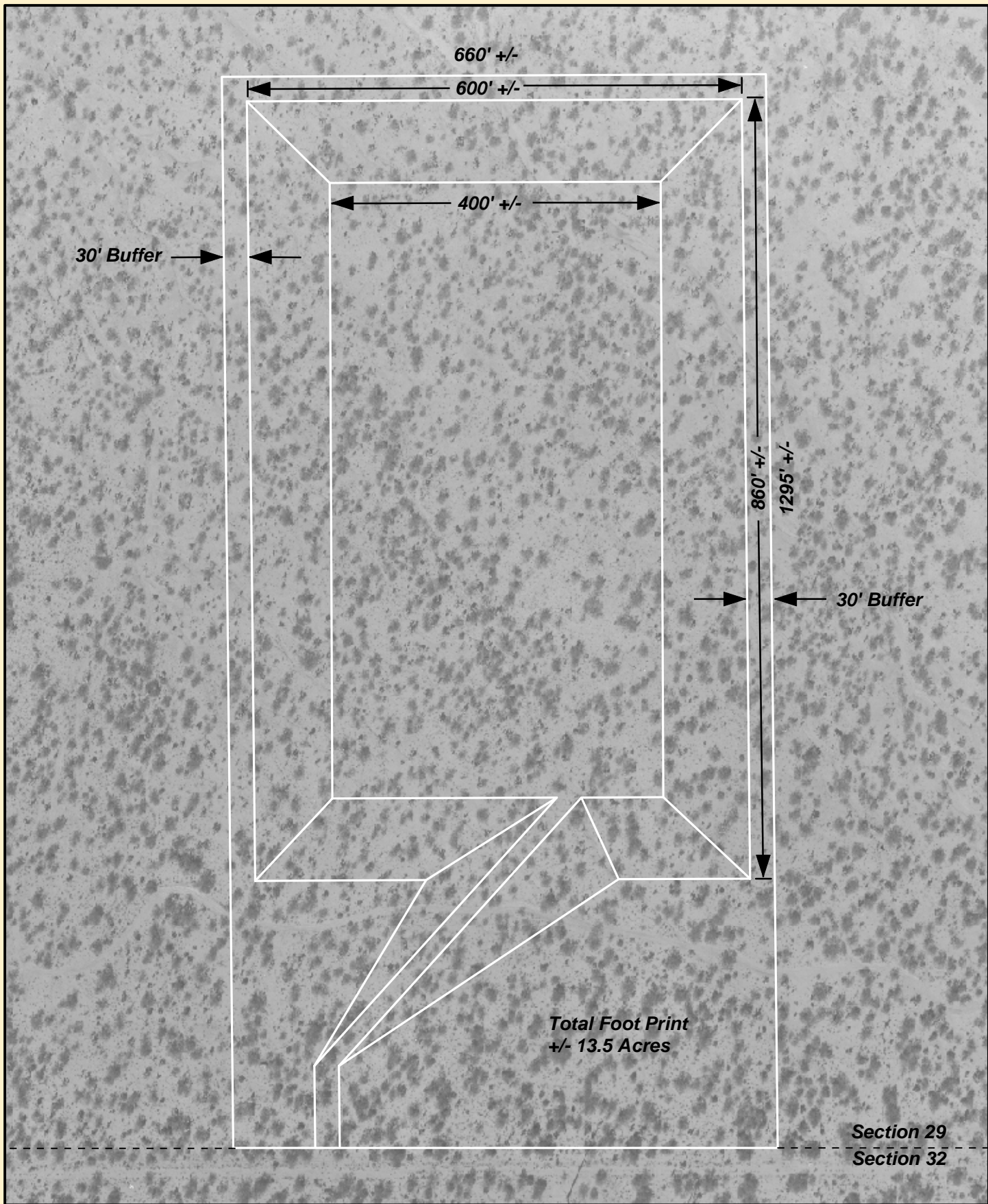


Figure 4
Proposed Recharge
Facility

CWC CAP
Water Delivery
and Recharge Project

Pima County Index Map

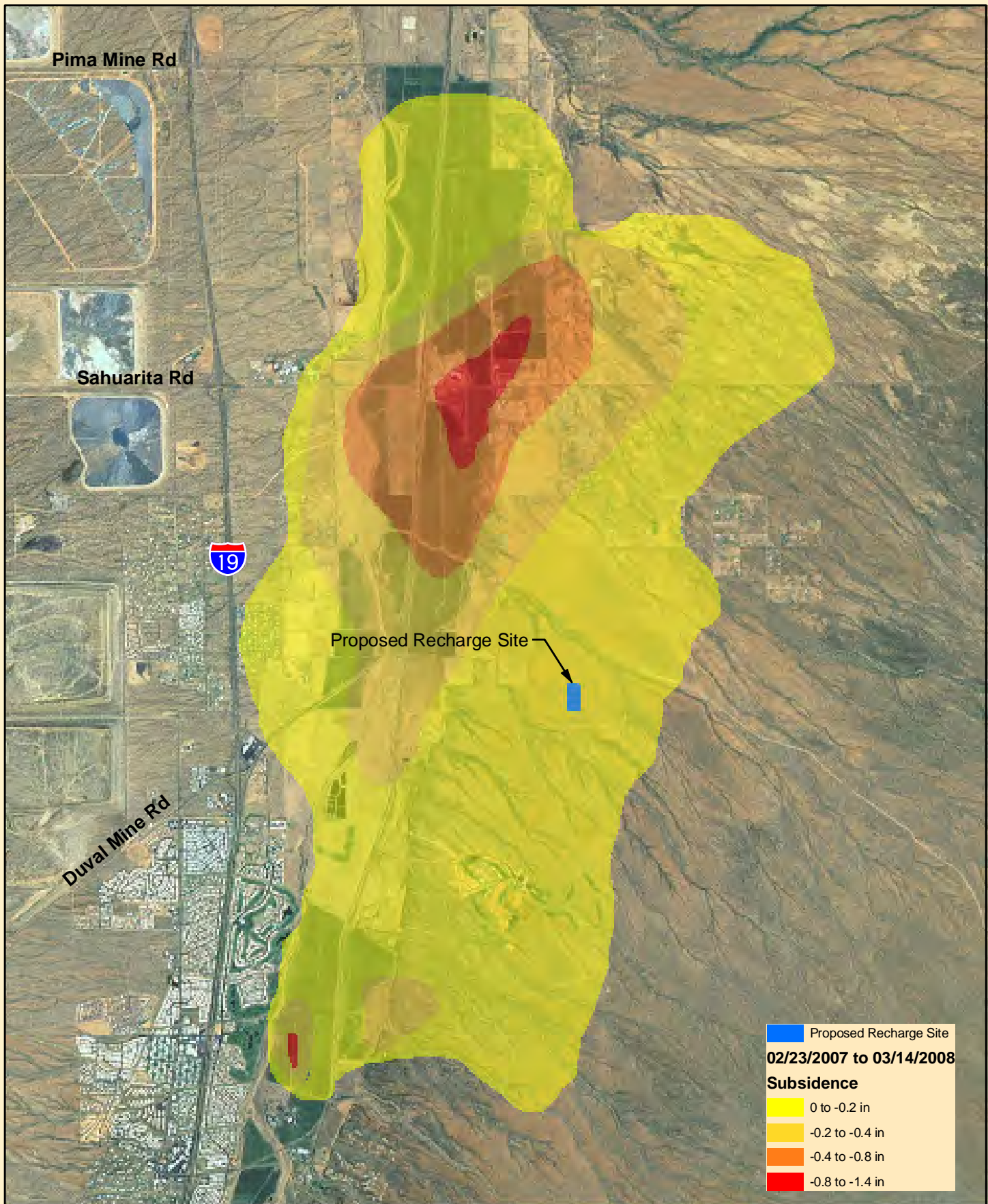


ERQ



Stantec Consulting, Inc
201 North Bonita Avenue Suite 101
Tucson, AZ 85745-2999
www.Stantec.com

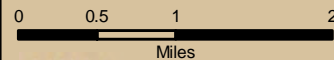




**Figure 8
Regional
Subsidence**

**CWC CAP
Water Delivery System**

Pima County Index Map



ERC



Stantec Consulting, Inc
201 North Bonita Avenue Suite 101
Tucson, AZ 85745-2999
www.stantec.com



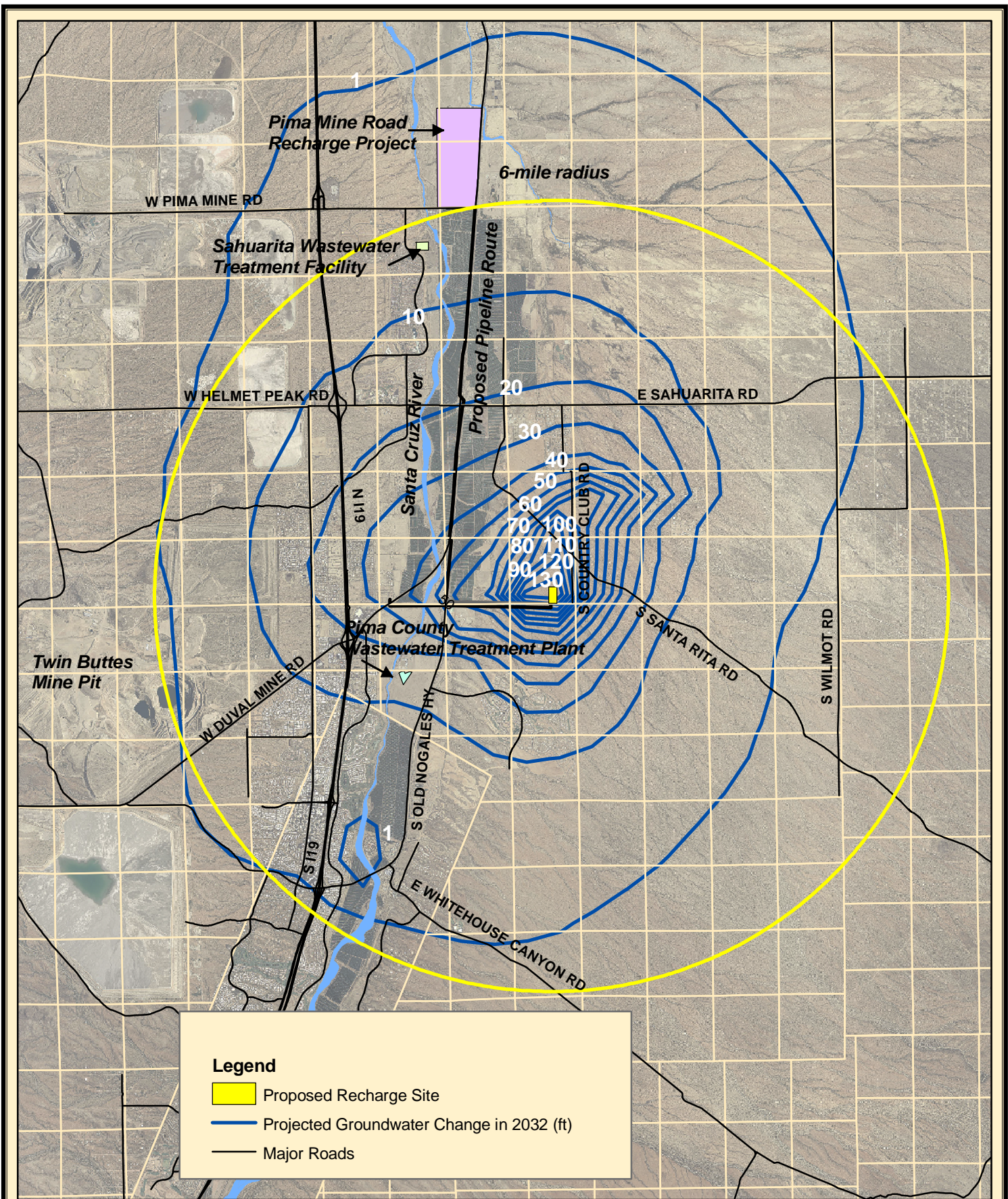
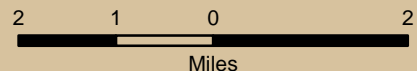


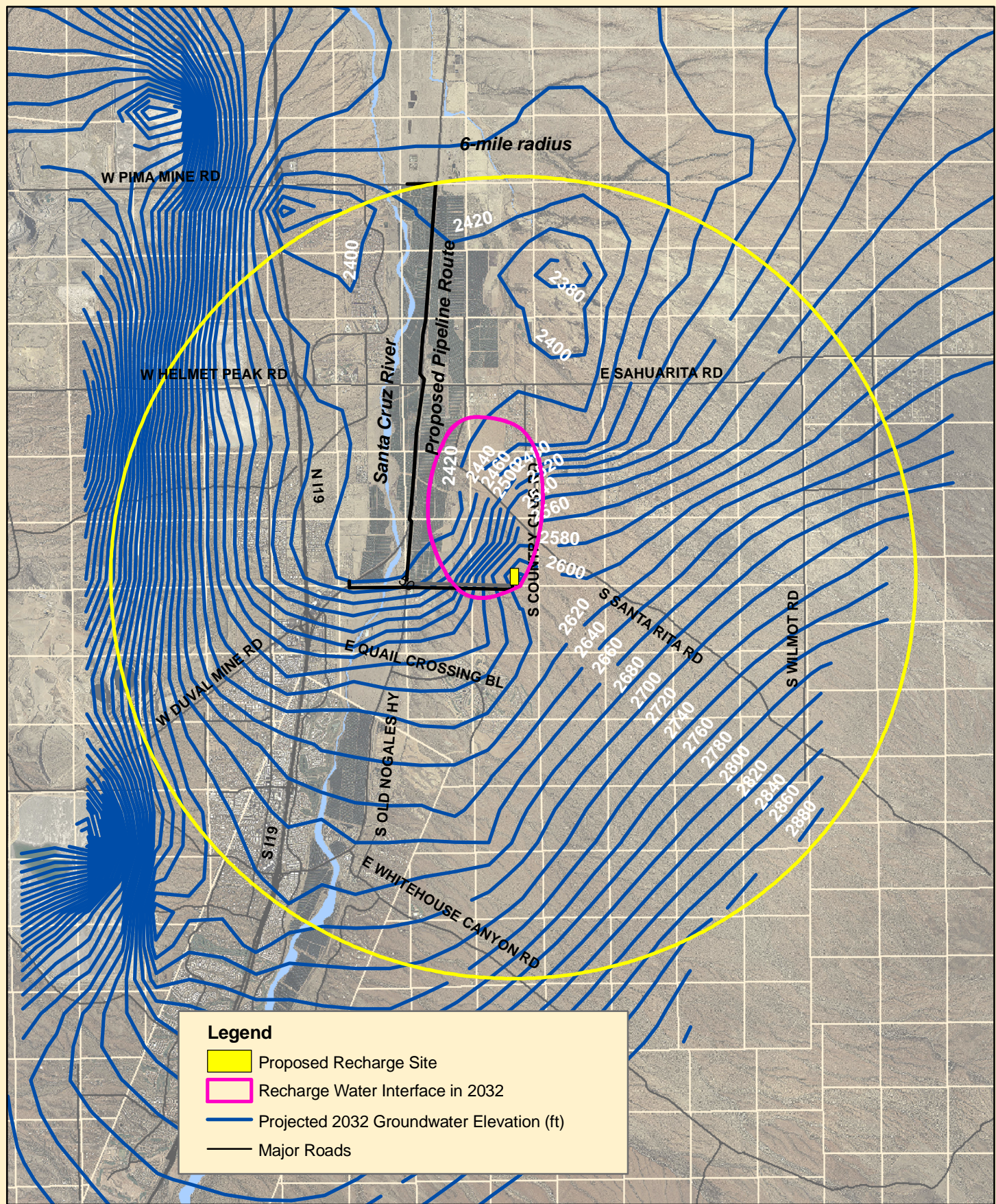
Figure 9
Regional Groundwater
Level Increase,
Preferred Alternative vs.
No Action Alternative

CWC CAP
Water Delivery
and Recharge Project



Stantec Consulting, Inc.
201 North Bonita Avenue Suite 101
Tucson, AZ 85745-2999
www.Stantec.com



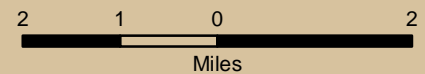


Legend

- Proposed Recharge Site
- Recharge Water Interface in 2032
- Projected 2032 Groundwater Elevation (ft)
- Major Roads

Figure 10
Recharge Water Interface,
Preferred Alternative

CWC CAP
Water Delivery
and Recharge Project



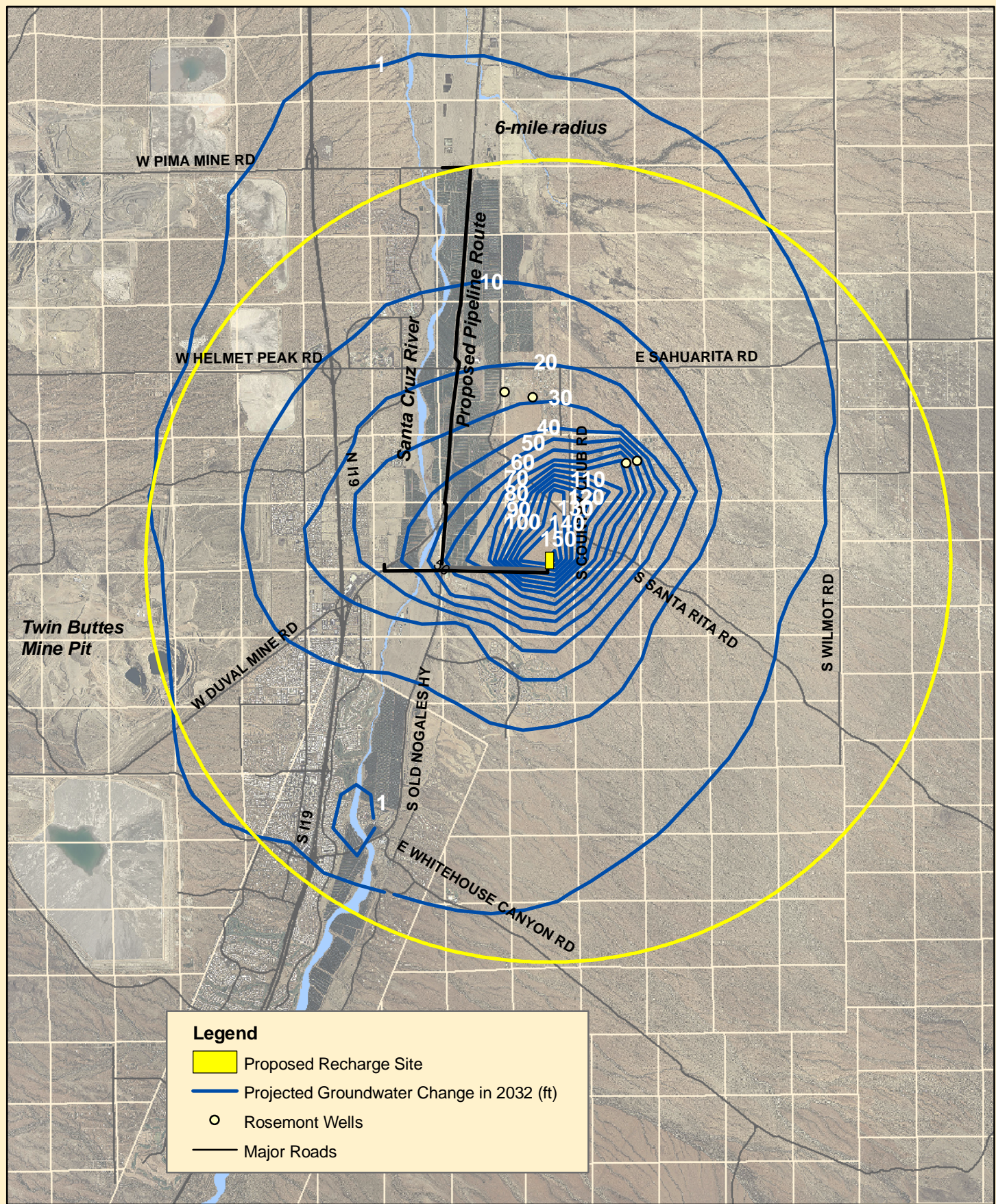
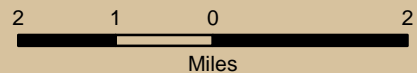
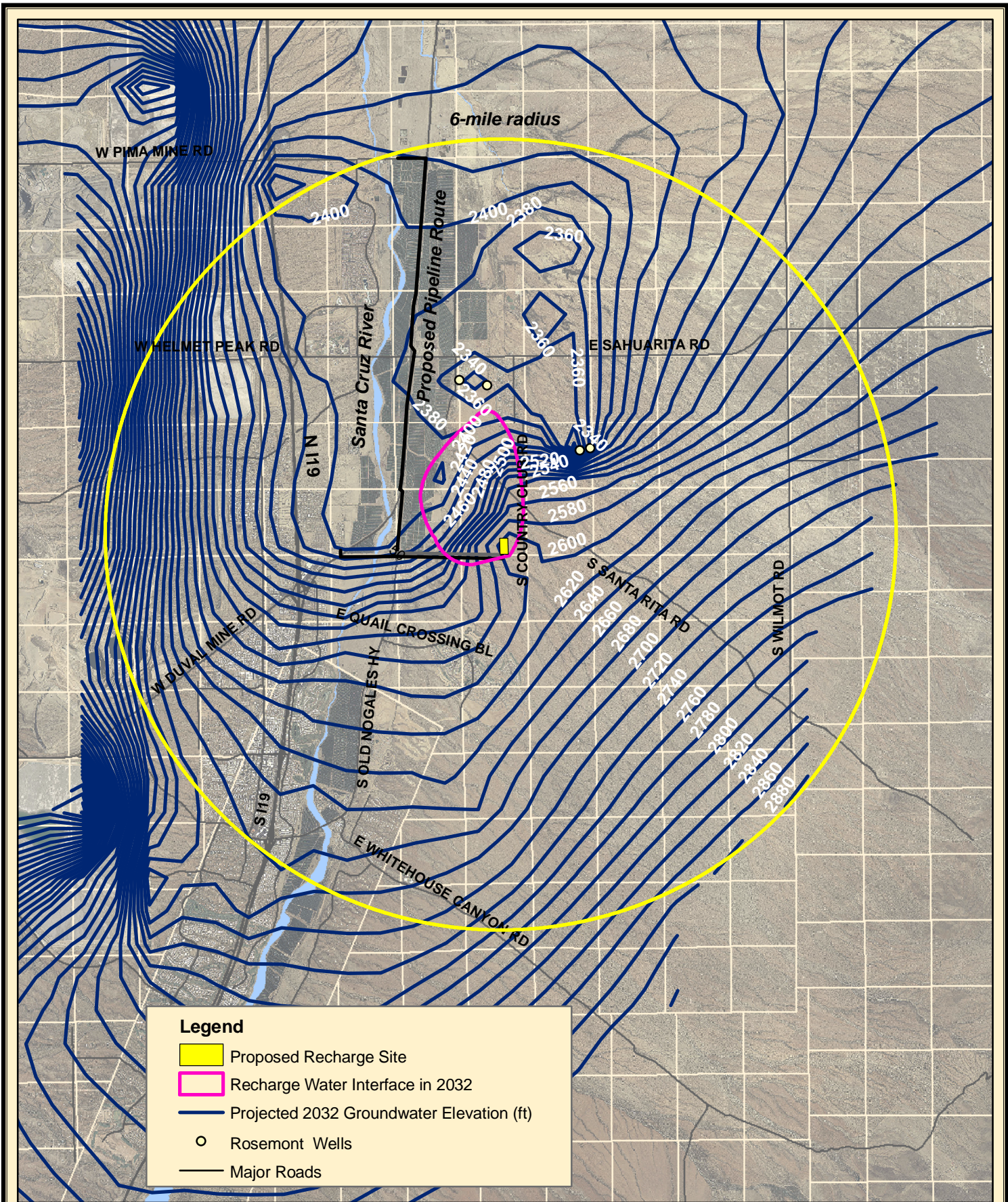


Figure 11
Regional Groundwater Level Increase, Proposed Project and Rosemont Pumping vs. No Project

CWC CAP
Water Delivery and Recharge Project



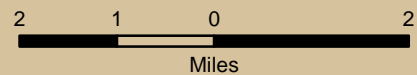


Legend

- Proposed Recharge Site
- Recharge Water Interface in 2032
- Projected 2032 Groundwater Elevation (ft)
- Rosemont Wells
- Major Roads

Figure 12
Recharge Water Interface,
Proposed Project and
Rosemont Pumping

CWC CAP
Water Delivery
and Recharge Project



Stantec Consulting, Inc
 201 North Bonita Avenue Suite 101
 Tucson, AZ 85745-2999
 www.Stantec.com

