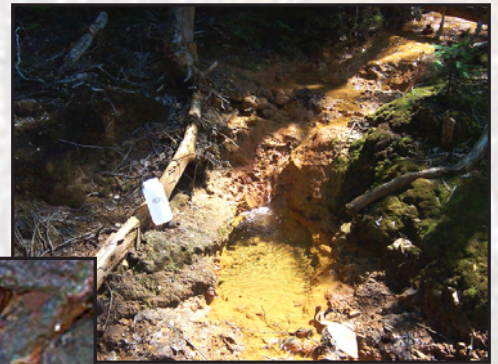


Prepared in cooperation with the U.S. Environmental Protection Agency

# Geochemical Characterization of Mine Waste, Mine Drainage, and Stream Sediments at the Pike Hill Copper Mine Superfund Site, Orange County, Vermont



Scientific Investigations Report 2006-5303

**Cover.** *Top left*—Gaging station at the headwaters of Pike Hill Brook downstream from the Eureka and Union mines.  
*Top right*—Eureka and Union mines drainage.  
*Center*—Blue and white precipitates on the wall of the Eureka mine adit.  
*Bottom left*—Mine-waste piles at the Eureka and Union mines.  
*Bottom right*—Seeps and ferricrete deposits at the base of the Eureka and Union mines waste piles.